



Universität Hamburg  
DER FORSCHUNG | DER LEHRE | DER BILDUNG

FAKULTÄT  
FÜR WIRTSCHAFTS- UND  
SOZIALWISSENSCHAFTEN

# A Scheme for Jointly Trading-off Costs and Risks of Solar Radiation Management and Mitigation Under Long-tailed Climate Sensitivity Probability Density Distributions

Elnaz Roshan  
Mohammad M. Khabbazan  
Hermann Held

WiSo-HH Working Paper Series  
Working Paper No. 56  
March 2020



WiSo-HH Working Paper Series  
Working Paper No. 56  
March 2020

## **A Scheme for Jointly Trading-off Costs and Risks of Solar Radiation Management and Mitigation Under Long-tailed Climate Sensitivity Probability Density Distributions**

Elnaz Roshan, University of Hamburg  
Mohammad M. Khabbazan, Technical University of Berlin  
Hermann Held, University of Hamburg

ISSN 2196-8128

Font used: „TheSans UHH“ / LucasFonts

Die Working Paper Series bieten Forscherinnen und Forschern, die an Projekten in Federführung oder mit der Beteiligung der Fakultät für Wirtschafts- und Sozialwissenschaften der Universität Hamburg tätig sind, die Möglichkeit zur digitalen Publikation ihrer Forschungsergebnisse. Die Reihe erscheint in unregelmäßiger Reihenfolge.

Jede Nummer erscheint in digitaler Version unter  
<https://www.wiso.uni-hamburg.de/de/forschung/working-paper-series/>

### **Kontakt:**

WiSo-Forschungslabor  
Von-Melle-Park 5  
20146 Hamburg  
E-Mail: [experiments@wiso.uni-hamburg.de](mailto:experiments@wiso.uni-hamburg.de)  
Web: <http://www.wiso.uni-hamburg.de/forschung/forschungslabor/home/>



# A Scheme for Jointly Trading-off Costs and Risks of Solar Radiation Management and Mitigation Under Long-tailed Climate Sensitivity Probability Density Distributions

*Elnaz Roshan<sup>1\*</sup>, Mohammad M. Khabbazan<sup>1 2</sup>, Hermann Held<sup>1</sup>*

## Abstract

Side-effects of “solar-radiation management” (SRM) might be perceived as an important metric when society decides on implementing SRM as a climate policy option to alleviate anthropogenic global warming. We generalize cost-risk analysis that originally trades-off expected welfare-loss from climate policy costs and risks from transgressing climate targets to also include risks from applying SRM. In a first step of acknowledging SRM risks, we represent global precipitation mismatch as a prominent side-effect of SRM under long-tailed probabilistic knowledge about climate sensitivity. We maximize social welfare for the following three scenarios, considering alternative relative weights of risks: temperature-risk-only, precipitation-risk-only, and equally-weighted both-risks. Our analysis shows that in the temperature-risk-only scenario, perfect compliance with the 2°C-temperature target is attained for all numerically represented climate sensitivities, a unique feature of SRM, but the 2°C-compatible precipitation corridor is violated. The precipitation-risk-only scenario exhibits an approximate mirror-image of this result. In addition, under the both-risks scenario, almost 90% and perfect compliance can be achieved for the temperature and precipitation targets, respectively. Moreover, in a mitigation-only analysis, the welfare-loss from mitigation cost plus residual climate risks, compared to the

---

<sup>1</sup> Research Unit Sustainability and Global Change, University of Hamburg, Grindelberg 5, 20144 Hamburg, Germany

<sup>2</sup> Department of Economic and Infrastructure Policy (WIP), The Technical University of Berlin, Strasse des 17. Juni 135, 10623 Berlin, Germany

\* Corresponding author e-mail: [elnaz.roshan@uni-hamburg.de](mailto:elnaz.roshan@uni-hamburg.de)

no-climate-policy option, is approximately 4.3% (BGE), while being reduced to a maximum of 0.38% under a joint-mitigation-SRM analysis.

**Keywords:** climate targets; cost-risk analysis; decision making under uncertainty; mitigation; solar-radiation management.

## 1 Introduction

Aerosol Solar Radiation Management (SRM) gained prominence as a climate policy option through the study by Crutzen (2006). SRM is defined as any deliberate large-scale manipulation of the planetary albedo to reduce surface temperature and counteract the risks of climate change caused by greenhouse gas (GHG) emissions (Kravitz et al. 2013a; MacMartin et al. 2014). Aerosol SRM is technically feasible and, compared to other climate policy options, a relatively inexpensive way to quickly offset anthropogenic global warming (Crutzen 2006; Goes et al. 2011; Keith 2000; Matthews and Caldeira 2007; McClellan et al. 2012; Robock et al. 2009; Shepherd et al. 2009). However, severe potential side effects are identified for SRM, such as a mismatch in global mean temperature and global mean precipitation compensation, ozone depletion, and a mismatch in spatial patterns of various climate variables (Bala et al. 2008; Barrett et al. 2014; Crutzen 2006; Kravitz et al. 2013a; Kravitz et al. 2013b; Lunt et al. 2008; Robock et al. 2008; Schmidt et al. 2012; Tilmes et al. 2013; Tilmes et al. 2008). While most extant SRM literature has discussed these in isolation, here we start with the hypothesis that society will make decisions on SRM in weighing them against costs and risks in view of alternative climate policy options, such as mitigation. Therefore, we strive for an integrated analysis of SRM and mitigation by pursuing a welfare-based portfolio approach.

In fact, Smith and Rasch (2013) evaluated SRM in conjunction with mitigation for a limited set of pre-defined, RCP-inspired mitigation scenarios, and investigated the role of SRM in meeting a pre-defined temperature target, depending on the degree of mitigation encapsulated in the scenario, as well as climate sensitivity (linking equilibrium temperature rise and greenhouse gas concentration). They found that the contribution of SRM increases with climate sensitivity, while mitigation and SRM act as substitutes. However, they did not seek welfare-optimal portfolios of mitigation and SRM.

This, in turn, was done by Goes et al. (2011), Moreno-Cruz and Keith (2013), Bahn et al. (2015), Heutel et al. (2016), Emmerling and Tavoni (2018), and Heutel et al. (2018), who implemented SRM jointly with mitigation in a cost-benefit analysis (CBA), the axiomatically most developed decision-analytic framework thus far. Here, we follow an alternative approach in utilizing a global temperature target as an entry-point for further analysis. We do so for two reasons. Firstly, some fraction of the climate economists' community asserts that currently applying CBA to the climate problem carries conceptual difficulties. Extant deep uncertainties regarding the necessary global warming impact function and imprecise weighing of the costs and benefits would lead to rather non-robust results (Kolstad et al. 2014; Kunreuther et al. 2014). Therefore, additional studies on global warming impacts and their valuation might be requisite, at least to determine a probabilistic representation of the aggregate global warming impact function. Instead, compliance with an environmental target can be interpreted as an operationalization of the precautionary principle in view of deep uncertainty. Secondly, one could take temperature targets embraced at the latest Conferences of the Parties (UNFCCC 2015) as boundary conditions, and elucidate a cost-efficient scenario to comply with this environmental boundary condition (cost effectiveness analysis, CEA). In fact, on the order of a thousand scenarios are assembled in the

latest IPCC report (Clarke et al. 2014), that are based on climate targets in conjunction with CEA, rather than on CBA. Arino et al. (2016), Ekholm and Korhonen (2016), Emmerling and Tavoni (2018), and Stankoweit et al. (2015) evaluated SRM together with mitigation applying CEA. With this article, we aim to serve those readers who acknowledge value in utilizing climate targets as entry assumptions for further economic analysis.

In the following, we generalize the target-concept to simultaneously cover the currently most discussed potential side-effect of SRM, and an infinitely-tailed probability density function on climate sensitivity. For this article, we focus on the following side effect. SRM might perfectly or in part compensate for greenhouse gases in terms of global mean temperature, but might prove unable to simultaneously do so for other climate variables, such as precipitation. The underlying reason is that SRM and greenhouse gases act on the climate system through different spatial symmetries. For this reason, for several climate variables, applying SRM destroys their scaling with global mean temperature. Consequently, for those variables, global mean temperature anomaly without specifying the cause of the anomaly, i.e., carbon dioxide vs. SRM, ceases to constitute a useful environmental proxy. Therefore, we focus on global mean precipitation as one additional climate variable that would be detached from global mean temperature through SRM. This builds a methodological extension to link the scientific community's understanding of key environmental side-effects of SRM and the policy makers' need for decision making based on the current best available information. While considering regional precipitation is closer to the society's need for policy making, here we demonstrate a concept for the global case which allows for a more transparent and tractable analytical and numerical analysis. Thus, results of a globally-aggregated analysis presented in this investigation should be interpreted with caution because main side-effect of SRM arises with regionalization.

In order to tackle this problem, yet remain as close to the target concept as possible, Stankoweit et al. (2015) suggested not to completely switch paradigms towards a full-fledged impact analysis, but rather to move only one step further down the impact chain. Following them, we explicitly model global precipitation and derive an explicit target for it. Similarly we obtain this target from asking, assuming a global temperature target of 2°C, “What precipitation change would a proponent of the 2°C temperature target have accepted before SRM was ever considered in global climate policy?” (the latter denotes a phase when the 2°C temperature target was negotiated). In this way, we derive a 2°C-compatible precipitation target.

Furthermore, due to a long-tailed probability density distribution on climate sensitivity, it is necessary to interpret global mean temperature targets probabilistically (den Elzen and van Vuuren 2007; Held et al. 2009). Target-based analyses, as assembled in Clarke et al. (2014), correspond to generic compliance probabilities of 1/2 or 1/3. However, when future learning on climate sensitivity is included in intertemporal welfare analysis, lexicographic preferences induced by targets would produce inconsistencies. In order to resolve these conceptual problems, cost-risk analysis (CRA) was proposed by Schmidt et al. (2011) and operationalized by Neubersch et al. (2014).

CRA is indeed a hybrid framework of CBA and CEA, which is utilized as a decision-analytic framework that allows for including targets in an economic analysis in a dynamically consistent manner, while not explicitly requiring a climate damage function. However, CRA necessarily requires a climate target as an input since the risk in this framework is defined as overshooting the climate target (Held 2019; Neubersch et al. 2014).

Roshan et al. (2019) evaluated the optimal SRM in conjunction with mitigation applying CRA and considering regional disparities in the temperature and precipitation risks. However, their analysis only includes a numerical investigation which can weakly answer the basic research questions regarding the methodology and results. To the best of our knowledge, hereby for the first time, we apply an analytical integrated cost-risk analysis (CRA) of mitigation and SRM considering climate risks, which is supported by an integrated climate-energy-economy assessment model. We seek the optimal mix of mitigation and SRM under probabilistic knowledge about climate sensitivity. This decision criterion is based on welfare maximization which trades-off between economic costs of climate policies, here mitigation and SRM, and the risk of transgressing the climate targets. Here, we introduce two risks: the risk of temperature rise, and the risk of precipitation change. SRM is a symptomatic approach that would not affect the root cause of the climate change but rather its symptoms particularly global warming. While acknowledging the importance of considering CO<sub>2</sub> concentrations as in Heutel et al. (2018) in SRM research, our focus is on temperature target because international climate targets are articulated in global mean temperature limit. Our analysis is based on the 2°C-temperature target with 66% compliance probability, which is derived from UNFCCC's agreement in 2011 (UNFCCC 2011). The admissible precipitation corridor is determined by those values of precipitation that can be found in the absence of SRM when increasing global mean temperature from the pre-industrial state to 2°C. Consequently, the precipitation corridor represents those deviations from pre-industrial precipitation that are compatible with the preference order, as expressed by the 2°C target. In our analysis, climate sensitivity is the key uncertain parameter and formally represented here through a log-normal probability density distribution (Lorenz et al. 2012; Neubersch et al. 2014; Wigley and Raper 2001).



To represent the cost-risk of joint-mitigation-SRM analysis, we apply the model MIND (model of investment and technological development) (Edenhofer et al. 2005; Held et al. 2009; Lorenz et al. 2012; Neubersch et al. 2014) as an integrated energy-economy-climate model. Generally, MIND is a renewable-fossil distinguishable model based on a Ramsey-type macroeconomic growth model.

## 2 Cost-Risk Analysis

In order to clarify some unique concepts of CRA, we discuss the static problem. In the static minimization problem of CRA (Equation 1), a convex decision problem is needed to prevent the local optima and switching to a different regime of optimum (under a relatively small change of emissions or climate sensitivity), which would not be in compliance with the value system of the proponents of temperature targets (Neubersch et al. 2014). To ensure that this is valid for any degrees of convexity of mitigation and SRM cost-functions, temperature and precipitation risk functions need to be non-concave. Linear risk metrics constitute the most conservative functions that we can choose which leads to a convex decision problem. For the mitigation cost  $C_M$ , SRM cost  $C_{SRM}$ , trade-off parameters  $\alpha$  and  $\beta$ , risk due to high temperature  $RT$ , and risk of precipitation change  $RP$ , the static optimization problem reads:

$$\text{Min } \{C_M + C_{SRM} + \alpha \mathbb{E}(RP) + \beta \mathbb{E}(RT)\} \quad (1)$$

$$\mathbb{E}(RT) = \int f(\gamma) \Phi(T - T_g) (T - T_g) d\gamma \quad (2)$$

$$\mathbb{E}(RP) = \int f(\gamma) [\Phi(P - P_{ub}) (P - P_{ub}) + \Phi(P_{lb} - P) (P_{lb} - P)] d\gamma \quad (3)$$

Linear risk metrics are defined as the probability of climate targets' violation proposed by Neubersch et al. (2014) for temperature risk, and we develop it for precipitation risk, which are respectively represented in Equations 2 and 3;  $f(\gamma)$ ,  $\Phi$ ,  $T_g$ ,  $P_{ub}$ , and  $P_{lb}$ , respectively, refer to the

probability density distribution of climate sensitivity  $\gamma$ , the Heaviside function (0 for negative arguments and 1 otherwise), the temperature target, upper-bound precipitation, and lower-bound precipitation. Uncertainty in climate response is a critical feature of the climate problem. To account for this facet, we consider probabilistic knowledge of climate sensitivity with a log-normal density distribution  $f(\gamma) \sim Ln \mathcal{N}(\mu, \sigma)$ , in our work  $\mu = 0.973$  and  $\sigma = 0.4748$  (Wigley and Raper 2001), which represents a somewhat centered distribution that mediates between fat-tailed (Roe and Baker 2007) and thin-tailed (Schneider von Deimling et al. 2006) distributions. In our numerical simulations, the sample number is 20 with equal probability within the range of  $1.01^\circ\text{C}$  to  $7.17^\circ\text{C}$ , which is chosen with the same approach as Lorenz et al. (2012).

As an environmental target, we choose the temperature target of  $2^\circ\text{C}$  maximum increase in global mean temperature anomaly with respect to pre-industrial climate and recognized by the UNFCCC's 15<sup>th</sup> COP in 2010. It is worth noting that we assess temperature and precipitation on the global and global-land scale, respectively. The global-land precipitation anomaly is linearly related to the global mean temperature change induced by SRM and  $\text{CO}_2$  emissions. We infer the coefficient of  $\text{CO}_2$ -induced temperature change from the  $\text{CO}_2$ -quadrupling experiment in Schmidt et al. (2012). We use temperature and precipitation change within the G1 experiment of GeoMIP and  $\text{CO}_2$ -quadrupling experiment from Schmidt et al. (2012) to simply derive the SRM-induced precipitation change coefficient through *G1-abrupt4xCO2*.

We apply a CRA-based welfare functional that would cope with SRM destroying global mean temperature as a proxy for most climate variables. In generalizing the static model, we readily obtain:

$$\text{Max } W = \sum_{t=0}^{t_{end}} \sum_{s_1}^{s_{end}} p_s [U(t, s) - \alpha RP(t, s) - \beta RT(t, s)] e^{-\rho t} \quad (4)$$

where  $t$ ,  $s$ ,  $p$ ,  $U$ , and  $\rho$  represent time, state of the world (SOW, climate sensitivity), probability of each SOW, utility, and rate of pure time preference, respectively; and  $\alpha$  and  $\beta$  are the trade-off parameters.

CRA makes a trade-off between the costs of reducing climate warming and excess climate risk. A trade-off parameter shows how important the risk of climate change is for society (Neubersch et al. 2014). Therefore, trade-off parameters are calibrated, such that welfare is maximized with at least 66% probability (according to IPCC guidance note on uncertainty, the equivalent term is ‘likely’) of remaining below the 2°C-temperature target without considering anticipated future learning and in the absence of SRM. This is according to 17<sup>th</sup> COP to the UNFCCC that “aggregate emissions pathways consistent with having a likely chance of holding the increase in global average temperature below 2°C or 1.5°C above pre-industrial level” (UNFCCC 2011). The calibration is simulated in a mitigation-only analysis excluding SRM because the 2°C-temperature target is a political argument in line with mitigation. Equation 4 still leaves one degree of freedom between  $\alpha$  and  $\beta$ . In addition, the larger  $\alpha$ , the larger the relative weight precipitation has had in the making of the 2°C target. This is currently a normative choice determining to what extent an explicit representation of global precipitation risk would make the precautionary approach encapsulated in the 2°C target obsolete.

We consider three scenarios accordingly, in which for two extreme cases of temperature-risk-only and precipitation-risk-only scenarios, we only account for temperature risk and precipitation risk, respectively. As an in-between scenario, in the both-risks scenario, we use half of any of the calibrated parameters to weigh both risks equally. This choice of scenarios is in order to follow a convex combination in accounting for temperature and precipitation risks in the decision profile. This means that the weight of one risk can be increased only if the other risk’s weight is reduced.

While precipitation is linearly related to temperature and its upper-bound is 2°C-compatible, in order to avoid double counting, a convex combination of risks should be taken into account; otherwise, 66% compliance would not be recovered.

$$R_{total} = \sum_{t=0}^{t_{end}} \sum_{s_1}^{s_{end}} p_s [\epsilon \beta RT(t, s) + (1 - \epsilon) \alpha RP(t, s)] e^{-\rho t} \quad (5)$$

Equation 5 presents the convex combination of expected discounted temperature and precipitation risks. The combination parameter,  $\epsilon$ , shows the weight of each risk from 0 to 1. Scenarios in this study present three combinations of risks for  $\epsilon$  that equal 0, 1/2, and 1 (see Figure A1 in the Appendix, which shows the sensitivity analysis on 100 different values of  $\epsilon$  ranging between 0 and 1 in a mitigation-only analysis).

### 3 A Stylized Theoretical Model

#### 3-1 $\beta$ Calibration

Before presenting numerical results, to guide intuition, we first introduce a stylized static model representing a simplification of the decision problem as expressed by Equation 4. For this, we firstly derive a theoretical solution for the trade-off parameter in the cost-risk framework. To do so, for conceptual clarity, we use the static CRA in the temperature-risk-only scenario of the mitigation-only analysis. For mitigation cost  $C_M(E_{CO_2})$  as a function of CO<sub>2</sub> cumulative emissions  $E_{CO_2}$  ( $C'_M(E_{CO_2}) \leq 0, C''_M(E_{CO_2}) \geq 0$ ), a temperature anomaly  $T = \gamma a E_{CO_2}$ , and temperature risk  $RT(E_{CO_2})$ , the minimization problem in this scenario reads:

$$Min_{E_{CO_2}} \quad \text{for } l: = C_M(E_{CO_2}) + \beta \mathbb{E}(RT(E_{CO_2})) \quad (6)$$

In this equation, temperature is the only variable that depends on climate sensitivity  $\gamma$ , the knowledge of which we express through a log-normal probability density distribution  $f$ .

As explained in the previous section, the calibration of the trade-off parameter is performed in accordance with the statement of the COP17 to reach a minimum safety of 66% ( $p_g$ ) probability of compliance with the 2°C-temperature target ( $T_g$ ). Hereby, the subscript ‘g’ denotes ‘guardrail’. Similar to Neubersch (2014), by minimizing Equation 6 to reach this calibration goal,  $\beta$  equals:

$$\beta = - \frac{C'_M(E_{CO_2,g})}{\frac{d}{dE_{CO_2}} \mathbb{E}(RT(E_{CO_2,g}))} \quad (7)$$

When determining a Taylor expansion of the cost function at the business-as-usual (BAU, no climate policy) emission level, the leading order must be the quadratic one. This ensures that BAU is optimal in the absence of climate risk.

$$C_M(E_{CO_2}) = k (E_{CO_2} - E_{BAU})^2 \quad (8)$$

We now derive a calibrated version of  $\beta$  for later numerical estimations. For this, the expected temperature risk needs to be calculated as shown in Equations 9 and 10.

$$\mathbb{E} \left[ R \left( T(E_{CO_2}) \right) \right] = \int_{\gamma_g}^{\infty} (T - T_g) f(\gamma) d\gamma \quad (9)$$

$$\mathbb{E} \left[ R \left( T(E_{CO_2}) \right) \right] = \frac{1}{2} (a e^{\mu + \frac{\sigma^2}{2}} E_{CO_2} (1 + \text{Erfc}[\frac{\mu + \sigma^2 - \text{Ln } \gamma_g}{\sqrt{2}\sigma}]) + T_g (-2 + \text{Erfc}[\frac{\mu - \text{Ln } \gamma_g}{\sqrt{2}\sigma}])) \quad (10)$$

From this,<sup>3</sup> we can calculate  $\beta$ :

$$\beta = \frac{4k (E_{BAU} - E_{CO_2,g})}{a e^{\mu + \frac{\sigma^2}{2}} \left( 1 + \text{Erfc} \left[ \frac{\mu + \sigma^2 - \text{Ln } \gamma_g}{\sqrt{2}\sigma} \right] \right)} \quad (11)$$

---

<sup>3</sup> Note that the complement error function of  $x$ ,  $\text{Erfc}[x]$ , equals  $1 - \text{Erf}[x]$ , where  $\text{Erf}[x]$  is the error function of  $x$ .

### 3-2 Joint-Mitigation-SRM Analysis: Optimal Emissions, Optimal SRM Forcing, and Minimum Climate Sensitivity

Here, we continue the theoretical solution to determine optimal emissions and SRM forcing in the cost-risk framework. Considering probabilistic climate sensitivity, we can provide information about the borderline climate sensitivity, for which the temperature threshold might be trespassed when we apply SRM. Similarly, we use the static CRA of the temperature-risk-only scenario while including SRM. We utilize the above assumptions on the mitigation cost function. For the SRM cost function  $C_{SRM}(F_{SRM})$ , we choose the SRM forcing  $F_{SRM}$  as a variable with  $C'_{SRM}(F_{SRM}) \geq 0$ . The temperature risk then reads  $RT(E_{CO_2}, F_{SRM})$ , and the minimization problem is:

$$\text{Min}_{E_{CO_2}, F_{SRM}} l \quad \text{for } l := C_M(E_{CO_2}) + C_{SRM}(F_{SRM}) + \beta \mathbb{E}(RT(E_{CO_2}, F_{SRM})) \quad (12)$$

For  $T = \gamma (a E_{CO_2} - h F_{SRM})$ , expected temperature risk, shown in Equation 2, can be rewritten as  $\mathbb{E}(RT) = \int_{\gamma_g}^{\infty} (T - T_g) f(\gamma) d\gamma$ , where  $\gamma_g$  is the minimum climate sensitivity for which temperature risk exists. This means that  $\gamma_g$  is where  $T > T_g$  (i.e.,  $\gamma(a E_{CO_2} - h F_{SRM}) > T_g \rightarrow \gamma > \frac{T_g}{a E_{CO_2} - h F_{SRM}}, \gamma_g = \frac{T_g}{a E_{CO_2} - h F_{SRM}}$ ).

Therefore, the expanded minimization problem,  $l$ , is:

$$l = C_M(E_{CO_2}) + C_{SRM}(F_{SRM}) + \beta \int_{\gamma_g}^{\infty} (\gamma a E_{CO_2} - \gamma h F_{SRM} - T_g) f(\gamma) d\gamma \quad (12-1)$$

The first-order condition for this two-variable problem is:

$$\frac{\partial l}{\partial E_{CO_2}} = C'_M(E_{CO_2}) + \beta \left( \int_{\gamma_g}^{\infty} \left( \frac{\partial T}{\partial E_{CO_2}} \right) f(\gamma) d\gamma - (T(\gamma_g) - T_g) f(\gamma_g) \left( \frac{\partial \gamma_g}{\partial E_{CO_2}} \right) \right)$$

(the second term vanishes by definition) (13)

$$\frac{\partial l}{\partial F_{SRM}} = C'_{SRM}(F_{SRM}) + \beta \left( \int_{\gamma_g}^{\infty} \left( \partial \frac{T}{\partial F_{SRM}} \right) f(\gamma) d\gamma - (T(\gamma_g) - T_g) f(\gamma_g) \left( \frac{\partial \gamma_g}{\partial F_{SRM}} \right) \right)$$

(the second term vanishes by definition) (14)

$$\frac{\partial l}{\partial E_{CO_2}} = C'_M(E_{CO_2}) + \beta a \int_{\gamma_g}^{\infty} \gamma f(\gamma) d\gamma = 0 \quad (13-1)$$

$$\frac{\partial l}{\partial F_{SRM}} = C'_{SRM}(F_{SRM}) - \beta h \int_{\gamma_g}^{\infty} \gamma f(\gamma) d\gamma = 0 \quad (14-1)$$

From Equations 13-1 and 14-1, we know that the optimum will be where:

$$hC'_M(E_{CO_2}) = -aC'_{SRM}(F_{SRM}). \quad (15)$$

In analogy to the mitigation cost function, we now determine the leading order term of Taylor expansion at BAU for the SRM cost function. As the SRM forcing cannot be positive, it is here the linear term that ensures BAU is optimal in the absence of climate risk. Therefore, assuming a quadratic mitigation cost function and a linear SRM cost function, such as:

$$C_M(E_{CO_2}) = k (E_{CO_2} - E_{BAU})^2 \quad (16)$$

$$C_{SRM}(F_{SRM}) = q F_{SRM} \quad (17)$$

Exploiting Equations 16 and 17 in Equation 15 reveals

$$E_{CO_2} = E_{BAU} - \frac{aq}{2kh} \quad (18)$$

at the optimum. For vanishing SRM cost, optimal emissions approach BAU emissions.

To calculate the optimal SRM forcing, we solve Equation 14-1,<sup>4</sup> and we obtain:

$$F_{SRM} = \frac{a}{h} \left( E_{BAU} - \frac{aq}{2kh} \right) - \frac{T_g}{h} e^{\sqrt{2} \sigma \text{InverseErf}\left[\frac{2q}{\beta h E(\gamma)} - 1\right] - \mu - \sigma^2} \quad (19)$$

For a scenario with very low (near zero) SRM cost, the optimal SRM forcing would be equal to  $\frac{a}{h} E_{BAU}$ , where  $E_{CO_2} = E_{BAU}$ . This means that SRM will perfectly compensate for temperature rise from emissions.

In theory, in the cost-risk analysis of the joint-mitigation-SRM, the following question may arise, “What is the borderline climate sensitivity for which the temperature threshold might be trespassed in a temperature-risk-only scenario?” As explained earlier in this section, we know that  $\gamma_g = \frac{T_g}{aE_{CO_2} - hF_{SRM}}$ .

We now solve this equation to derive  $\gamma_g$ :

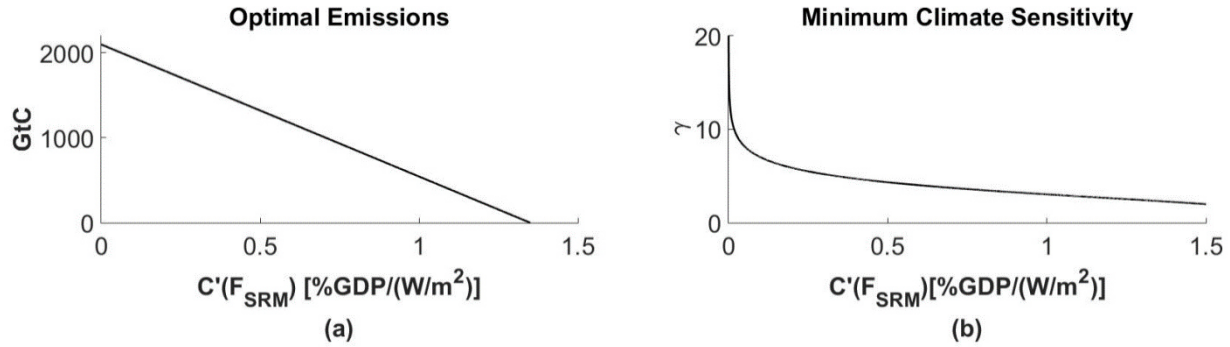
$$\gamma_g = e^{\mu + \sigma^2 - \sqrt{2} \sigma \text{InverseErf}\left[\frac{2C'_{SRM}(F_{SRM})}{\beta h E(\gamma)} - 1\right]} \quad (20)$$

---

<sup>4</sup> The complete solution to solve Equation 14-1 is explained in Appendix B.



We can see in this equation that SRM cost is a significant factor in determining the borderline climate sensitivity. Minimum climate sensitivity, for which the temperature target would be transgressed, goes toward infinity for near zero SRM cost.



**Figure 1.** Optimal emissions (a) and minimum climate sensitivity (b) against SRM costs derivative, for which temperature risk exists in a temperature-risk-only scenario.

### 3-3 Approximate Estimation

#### 3-3-1 Calibrated $\beta$

In this section, we prepare a test to determine to what extent our static model can emulate the dynamic analogue model MIND. Consequently, we utilize MIND parameters to estimate the calibrated  $\beta$  shown in Equation 11.

To estimate  $\beta$ , we first calculate  $\gamma_g$  in the mitigation-only portfolio. In CRA, calibration is performed such that temperature remains below the temperature target with at least a 66% ( $=p_g$ ) probability of safety. Therefore, for probability  $p$  and cumulative density function  $F(\gamma)$  of a log-normal distribution, we have:

$$F(\gamma) = \left(\frac{1}{2}\right) \text{Erfc} \left[ \frac{\mu - \text{Ln} \gamma}{\sigma \sqrt{2}} \right] \quad (21)$$

$$p_g = F(\gamma_g) \quad (22)$$

$$\gamma_g = F^{-1}(p_g) \quad (23)$$

$$\gamma_g = F^{-1}(0.66) \quad (24)$$

$$\gamma_g = 3.22 \text{ }^\circ\text{C} \quad (25)$$

The emissions for the 2°-temperature policy and the no-policy (BAU) are, respectively, obtained from the time-averaged cumulative emissions' results in the MIND model with accumulation starting in 2010<sup>5</sup>. In the temperature equation,

$$T = \gamma a E_{CO_2} \quad (26)$$

we can calculate  $a = 0.00092 \text{ GtCO}_2^{-1}$  given the information that we have for a 2°-temperature policy.

Capital letters indicate static, and in some sense, time-averaged quantities of time-dependent variables. For economic variables that experience quasi-exponential growth, we suggest exponential discounting in the course of aggregation. Therefore, for production  $y(t) = \bar{y}e^{\lambda t}$  and its relative change  $\frac{\Delta y(t)}{y(t)} = -\omega t e^{-nt}$ , we define:

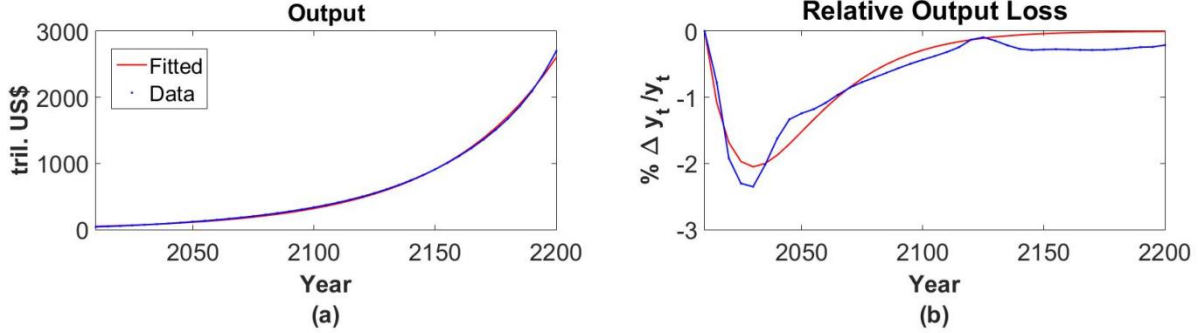
$$\Delta Y := \frac{\int_0^\infty -\omega y(t) t e^{-nt} e^{-st} dt}{\int_0^\infty e^{-st} dt} = -\frac{\omega \bar{y} s}{(s+n-\lambda)^2} \quad (27)$$

$$Y := \frac{\int_0^\infty \bar{y} e^{\lambda t} e^{-st} dt}{\int_0^\infty e^{-st} dt} = \frac{\bar{y} s}{s-\lambda} \quad (28)$$

---

<sup>5</sup> Numerical estimations of the model MIND used for calibrating the theoretical model are shown in table 1.

Parameters in the exponential production function are calculated through an exponential fitting regression of model output for a BAU analysis (see Figure 2a). In addition,  $n$  within the relative production change is the inverse time period to peak the maximum output loss in a mitigation-only analysis compared to a BAU analysis (Figure 2b).



**Figure 2.** Exponential fitted output (a) and relative output change in mitigation-only portfolio with regard to BAU analysis (b).

Using information that we have so far, we can calculate  $C_M(E_{CO_2}) = \left| \frac{\Delta Y}{Y} \right| = \frac{\omega(s-\lambda)}{(s+n-\lambda)^2}$  and  $k = \frac{C_M(E_{CO_2})}{(E_{CO_2} - E_{BAU})^2}$ . We now possess all of the information needed to estimate  $\beta = 1.3\% \text{GDP}/^\circ\text{C}$ .

### 3-3-2 Optimal Emission, Optimal SRM Forcing, and Minimum Climate Sensitivity

Here, we can estimate optimal emissions, optimal SRM forcing, and minimum climate sensitivity derived, respectively, in Equations 18, 19, and 20.

$$E_{CO_2} = E_{BAU} - \frac{aq}{2kh} = 2035.12 \text{ GtCO}_2 \quad (29)$$

$$F_{SRM} = \frac{1}{h} \left( a E_{CO_2} - \frac{T_g}{\gamma_g} \right) = 6.04 \text{ W/m}^2 \quad (30)$$

$$\gamma_g = e^{\frac{\mu + \sigma^2 - \sqrt{2} \sigma \text{InverseErf}[\frac{2 C'_{SRM}(F_{SRM})}{\sigma^2} - 1]}{\beta h e^{\mu + \frac{\sigma^2}{2}}}} = 8.5^\circ\text{C} \quad (31)$$

Apparently, this minimum climate sensitivity is higher than the upper range climate sensitivity of our numeric (see Figure C1 in Appendix C for more information on numerical sensitivity analysis, which shows this minimum climate sensitivity in the temperature-risk-only scenario).

| Climate Parameters |                                   |  | Economic Parameters |           |   |
|--------------------|-----------------------------------|--|---------------------|-----------|---|
| Eq.6               | $T_g$                             | 2°C                                    | Eq. 27              | $n$       | 5 %/yr  |
| Eq. 11             | $E_{CO_2,g}$ (mitigation – only)* | 675.93 GtCO <sub>2</sub>               | Eq. 27,<br>Eq. 28   | $\lambda$ | 2.1 %/yr  |
| Eq. 11             | $E_{BAU}$                         | 2098.59 GtCO <sub>2</sub>              | Eq. 27,<br>Eq. 28   | $s$ ***   | 5%/yr   |
| Eq. 19,<br>Eq. 20  | $(\mu, \sigma)$                   | (0.973,0.4748)                         | Eq. 17              | $q$ ****  | 0.024<br>%GDP/(W/m <sup>2</sup> )                                 |
| Eq. 22             | $p_g$                             | 66%                                    | Eq. 27              | $\omega$  | 0.28 %/yr   |
| Eq. 12.1           | $h$ **                            | 1/3.7 /(W/m <sup>2</sup> )             | Eq. 8               | $k$       | $6.4284 \times 10^{-7}$<br>%GDP/(GtCO <sub>2</sub> ) <sup>2</sup> |
| Eq. 26             | $a$                               | 0.0009 GtCO <sub>2</sub> <sup>-1</sup> |                     |           |   |
| Eq. 24             | $\gamma_g^{2^\circ\text{C},66\%}$ | 3.22°C                                 |                     |           |   |

**Table 1.** Numerical values used for calibrating the theoretical model.

\* Cumulative emissions are averaged over the time period 2010-2200.

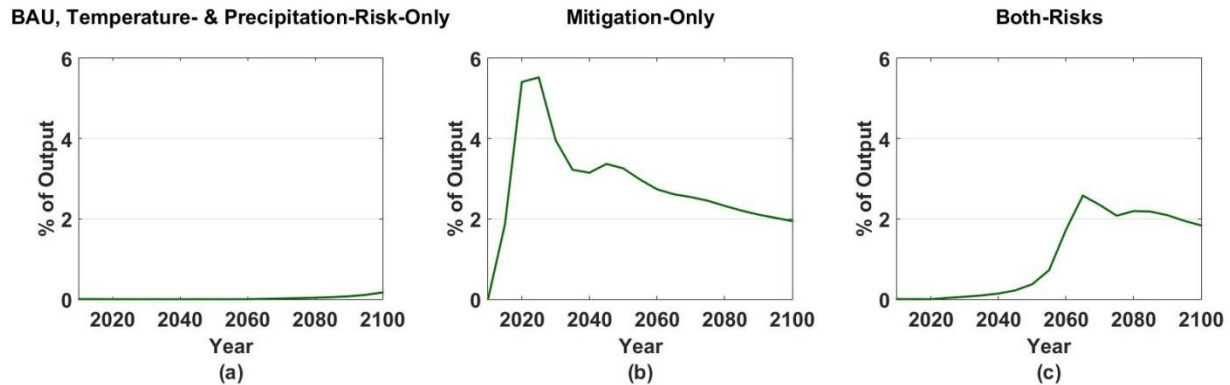
\*\* According to Kriegler and Bruckner (2004),  $h$  equals the reciprocal of the radiative forcing induced by a doubling of the concentration of CO<sub>2</sub> with respect to its pre-industrial value.

\*\*\* Social discount rate,  $s$ , is calculated utilizing the Ramsey equation  $s = \rho + \lambda\eta$ , where  $\rho$ ,  $\lambda$ , and  $\eta$  are, respectively, pure rate of time preference (1 %/yr), production growth rate (2 %/yr), and constant relative risk aversion (2).

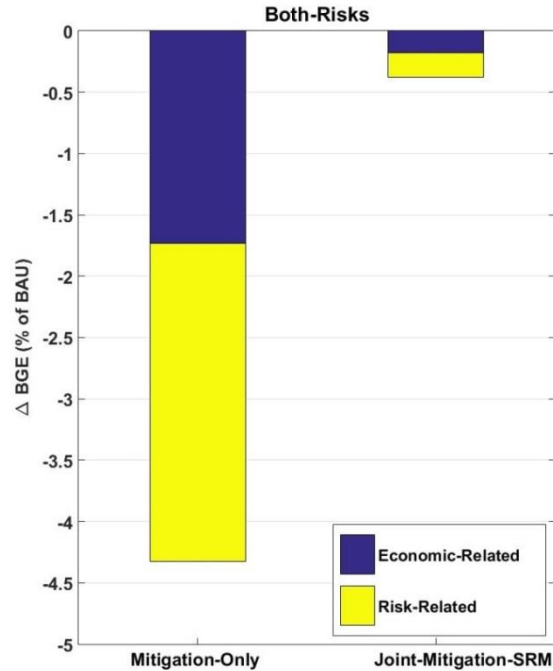
\*\*\*\* SRM cost parameter,  $q$ , is calibrated from upper bound estimation of Klepper and Rickels (2012) as a percentage change in annual global GDP of \$50 trillion (Moreno-Cruz and Keith 2013) from World Bank, World Development Indicator.

## 4 Numerical Results

In a joint-mitigation-SRM analysis, mitigation would be almost crowded out by SRM in the temperature- and precipitation-risk-only scenarios, which can be explained by the low cost of SRM in order to reduce climate risk (see Figure 3). Society would experience almost no welfare-loss compared to the no-climate-policy option (business as usual, BAU) in these two scenarios. In the both-risks scenario, welfare-loss due to climate-policies costs and climate risks is more than these two scenarios, and amounts to approximately 0.38% (in terms of balanced growth equivalent, BGE) compared to BAU welfare, which is very low relative to 4.3% in the mitigation-only portfolio, as shown in Figure 4. In the mitigation-only portfolio, mitigation cost (consumption loss relative to BAU consumption) is approximately 1.7% (economic-related part in Figure 4).

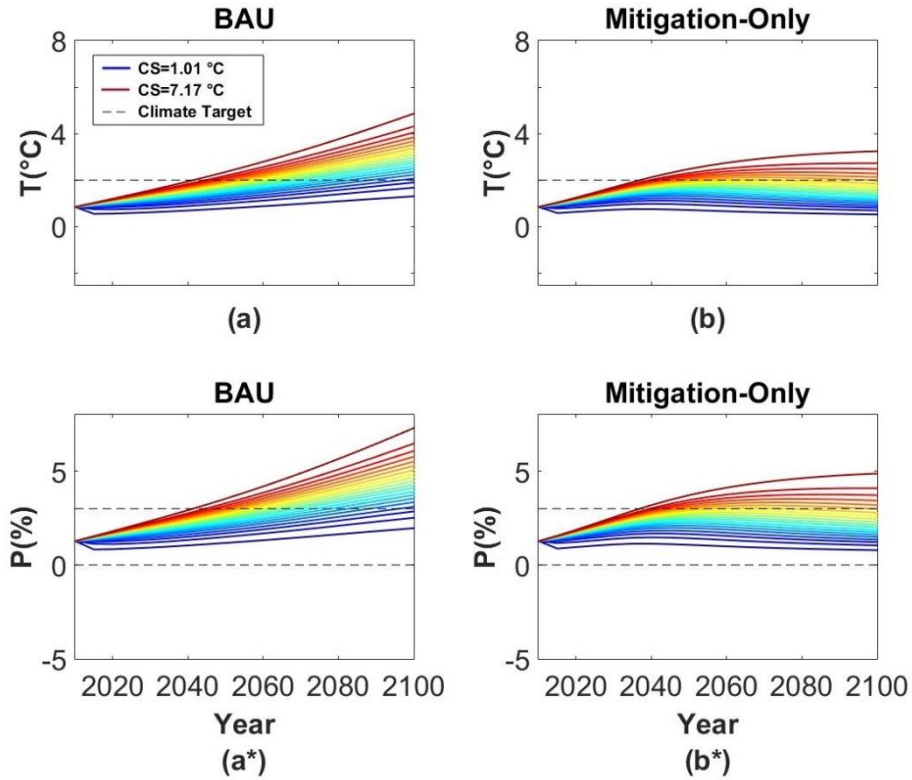


**Figure 3.** Investment in renewables. In temperature- and precipitation-risk-only scenarios, mitigation would be crowded out (a) while in both-risks scenarios (c), the starting point of investment on renewables would be approximately 30 years earlier than BAU analysis (a), but still 30 years later than mitigation-only analysis (b).



**Figure 4.** Welfare-loss (in terms of BGE) in the both-risks scenario from climate risks and economic costs for the mitigation-only and joint-mitigation-SRM portfolio. This shows that by adding SRM to the mitigation portfolio, more than 90% of welfare loss due to temperature and precipitation risks and mitigation cost can be conserved.

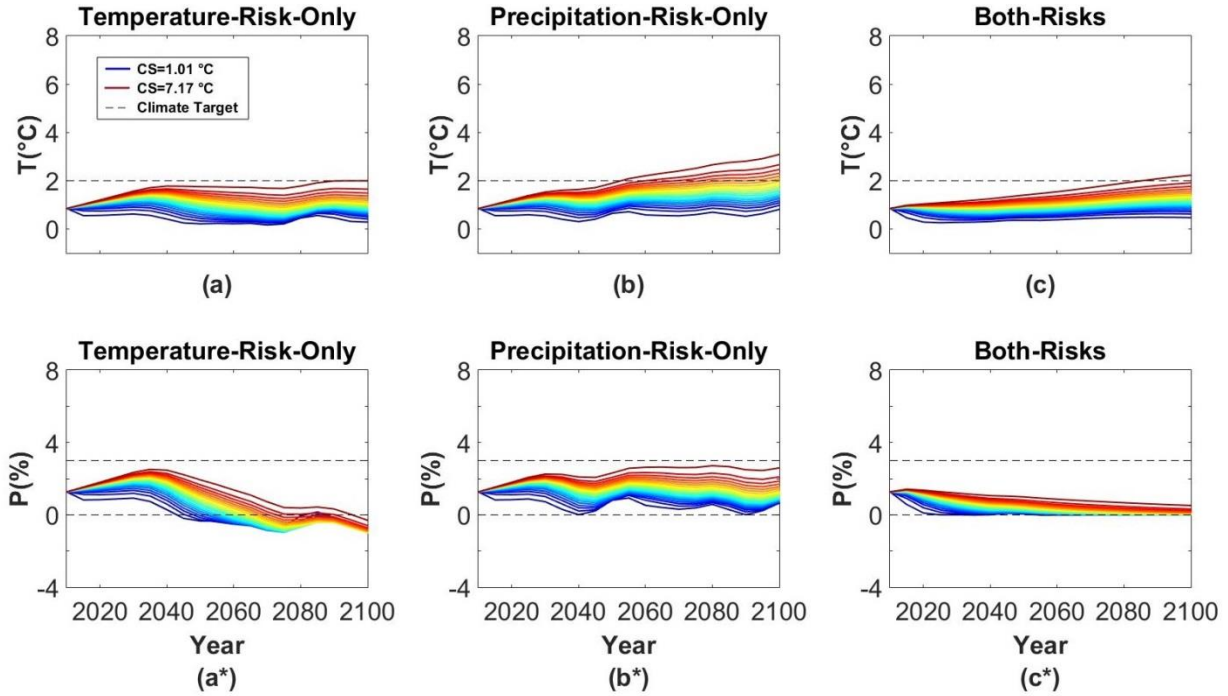
Figure 5 presents the temperature and precipitation trends for all of the numerically represented climate sensitivities (SOWs) in the BAU and mitigation-only analysis in the time horizon until 2100. In the BAU analysis (Figures 5a and 5a\*), temperature target and precipitation upper bound are violated for most of the SOWs.



**Figure 5.** Temperature and precipitation change with respect to the preindustrial level for 20 different states of the world from blue (low climate sensitivity) to red (high climate sensitivity). Left and right graphs represent scenarios for the BAU and mitigation-only portfolios, respectively. Dashed lines show the relevant target. In the BAU analysis, both temperature and precipitation targets would be transgressed for most of the SOWs, while they comply with their targets for approximately 66% of SOWs in the mitigation-only portfolio by construction.

In the mitigation-only portfolio (Figures 5b and 5b\*), temperature and precipitation trends exhibit a significant transgression reduction compared to BAU analysis, although they would exceed their targets in the 21<sup>st</sup> century for the 20% upper range of SOWs at the end of the century. These patterns in the mitigation-only option are the same for all investigated scenarios, which can be explained by the same calibration process in the extreme scenarios, a convex combination of risks, and compatible choice of temperature and precipitation risks when SRM is excluded. Therefore, if climate sensitivity is sufficiently large, mitigation cannot assure that temperature and

precipitation remain confined to their thresholds at all times. This is where SRM might be considered as a climate policy option to help avert the 2°C transgressions.

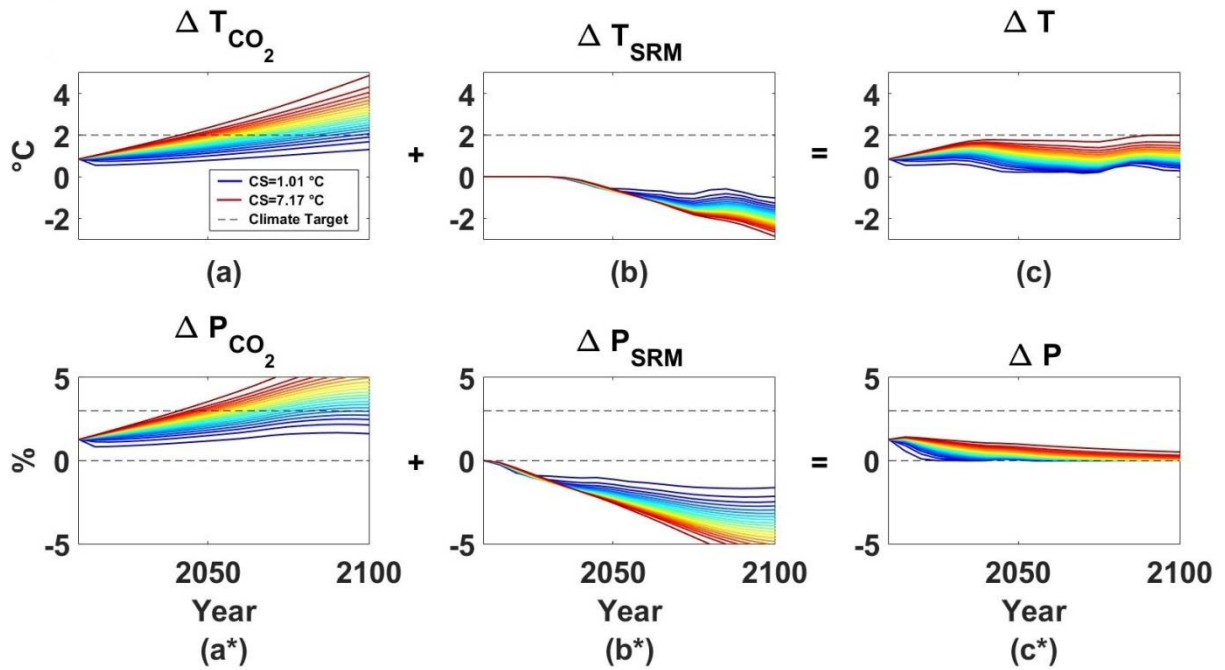


**Figure 6.** Temperature and precipitation change from preindustrial climate in the joint-mitigation-SRM analysis for 20 different states of the world from blue (low climate sensitivity) to red (high climate sensitivity). Left, middle, and right graphs represent trends for temperature-risk-only, precipitation-risk-only, and both-risks, respectively. Dashed lines show the relevant target. In the temperature-risk-only scenario, perfect compliance with the temperature target can be achieved, but the precipitation target is violated. The precipitation-risk-only and both-risks scenarios exhibit perfect compliance with the precipitation target, while the temperature target is transgressed.

By adding SRM to the portfolio, we again consider the temperature-risk-only, precipitation-risk-only, and both-risks scenarios (Figure 6). Figures 6a and 6a\* represent temperature-risk-only scenarios, in which SRM is added to the portfolio but its side effects are not taken into account. In this scenario, we obtain perfect compliance with the 2°C-temperature target for all of the SOWs. This is a feature that is impossible to achieve without SRM. The “borderline” climate sensitivity



value for which a transgression would still occur is determined by equalizing the marginal welfare gain from avoiding climate risk through an extra unit of SRM, and per-unit SRM costs. The former, in turn, will depend on the properties of the probability density function of climate sensitivity. Apparently, the above borderline value of climate sensitivity is larger than our resolved upper end as of  $7.17^{\circ}\text{C}$  (see Figure C1 in the Appendix C).



**Figure 7.** Division of temperature and precipitation changes into the  $\text{CO}_2$ - and SRM-induced changes. Top figures divide temperature change in the temperature-risk-only scenario into the  $\text{CO}_2$ - and SRM-induced changes. Lower figures display  $\text{CO}_2$ - and SRM-induced precipitation changes in the both-risks scenario. As shown, SRM-induced changes are in a manner that compensates for all of the changes induced by  $\text{CO}_2$ , and thus this compensation is more for higher climate sensitivities.

However, precipitation violates its lower bound for all SOWs by the end of the century. Precipitation declines more dramatically for those with higher climate sensitivities than those with lower climate sensitivities. SRM reduces temperature risk by compensating the  $\text{CO}_2$ -induced

temperature rise, which is greater for higher climate sensitivities. Therefore, SRM-induced temperature and precipitation reductions are larger when climate sensitivity is higher (see upper graphs in Figure 7).

In contrast, in the precipitation-risk-only scenario in which only the precipitation risk is activated (Figures 6b and 6b\*), the temperature guardrail is transgressed for approximately 30% of SOWs in the joint-mitigation-SRM analysis by the end of the century, while precipitation lies in its acceptable range for all SOWs. In Figures 6c and 6c\*, which display the results of the both-risk scenario in which both precipitation and temperature risks are activated with equal weights, almost 90% and perfect compliance, respectively, with temperature target and precipitation corridor, can be achieved for the time horizon until 2100. CO<sub>2</sub>- and SRM-induced precipitation changes in this scenario are shown in the lower graphs of Figure 7. As both risks are taken into the optimization problem in this scenario, both risks are minimized compared to the extreme scenarios.

## **5 Conclusions**

We emphasize the need for evaluating solar radiation management (SRM) jointly with mitigation. Here, we consider precipitation mismatch as a key risk category of SRM and formalize a target-based risk-cost-risk tradeoff between risks from global warming, policy costs, and risks from SRM side-effects. We choose cost-risk analysis (CRA) as our decision analytic framework, as it successfully deals with both deep uncertainty on global warming- and SRM-induced damages, as well as the infinitely-tailed probability density function of climate sensitivity. CRA combines the mathematical structure of cost-benefit analysis with the target concept used in cost-effectiveness analysis. The trade-off parameters are calibrated within a universally applicable procedure, which makes a trade-off between expected welfare-loss due to mitigation costs and

avoided risks of climate targets transgression considering uncertainty in reaching the climate targets. We choose a probabilistic compliance level of 66%, in-line with an IPCC-calibrated language adjusted interpretation of “likely” achieving the 2°C target (UNFCCC 2011). We invent an extension of CRA such that it can deal with multiple climate targets, in our case precipitation target, in addition to the original temperature target. For the sake of transparency of the methodology, here we focus on the interplay of targets for globally aggregated climate variables.

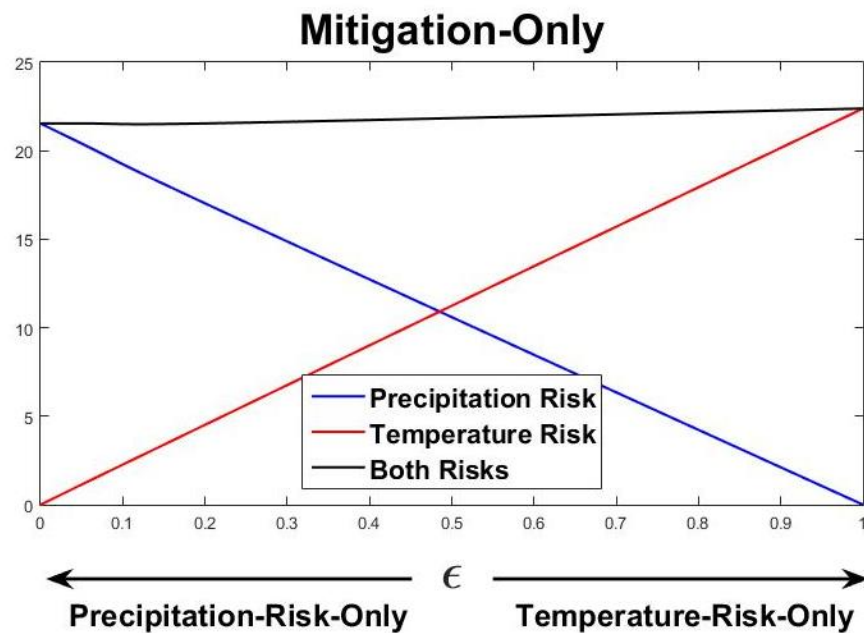
To identify the optimal choice between mitigation and SRM, we utilize an integrated assessment model and develop three scenarios: two as the extreme cases when either temperature risk or precipitation risk are considered, i.e., temperature-risk-only and precipitation-risk-only; and one scenario which considers both risks with equal weight, called both-risks scenario. Overall, our results demonstrate that welfare-loss for the mitigation-only option compared to BAU is approximately 4.3% (BGE) due to mitigation cost and climate risk, while it is approximately 1.7% (BGE) only due to mitigation cost.

By adding SRM to the portfolio, in the temperature- and precipitation-risk-only scenarios, welfare rises approximately to its BAU level. In addition, SRM almost completely crowds out mitigation without significant welfare-loss in comparison with BAU, which can be explained by its low cost. In the temperature-risk-only scenario, perfect compliance and perfect incompliance, respectively, with temperature target and precipitation corridor can be achieved for all SOWs. In the precipitation-risk-only scenario, precipitation perfectly lies within its acceptable range for all SOWs, but temperature remains confined to its threshold for 70% of SOWs. Results of the both-risks scenario show almost 90% and perfect compliance with temperature and precipitation targets, respectively. Although SRM does not completely crowd out mitigation in this scenario, it can save 90% of welfare-loss from economic costs and climate risks.

As a note of caution, we would like to highlight that we expect qualitatively different results when regional guardrails are added. In this sense, the fact that mitigation is crowded out in a joint-mitigation-SRM portfolio (in temperature- and precipitation-risk-only scenarios) could constitute a unique feature of global guardrails, which might not be robust under regionalization. Furthermore, we would like to emphasize that our analysis comprises only one out of several potential risks accompanying SRM. Here, the contribution of this work is that we merely propose a viable idea of how to generalize a single probabilistic target to multiple targets for discussion, and highlight the unique feature of SRM of achieving almost 100% compliance levels.

## Appendix A

In this section, we present the results of our sensitivity analysis for a convex combination of climate risks in the decision-making shown in Equation 5 of the main manuscript. Figure A1 displays the total risks for 100 different values of combination parameter,  $\epsilon$ , ranging from 0 to 1. This clearly demonstrates that the total risks in a mitigation-only analysis will not change by using a convex combination of the different climate variables' risks. This assists our cost-risk analysis to add further precipitation risk in addition to temperature risk, and analyzing both risks simultaneously.



**Figure A1.** Convex combination of temperature and precipitation risks. This figure shows the sensitivity analysis on combination parameter of Equation 5 in the mitigation-only portfolio, for 100 different  $\epsilon$  ranging between 0 and 1. As shown, the convex combination of temperature and precipitation recover 66% compliance goal of calibration and prevent double counting.

## Appendix B

Here, we can find the solution for Equation 14-1 to be solved for optimal SRM forcing,  $F_{SRM}$ .

The solutions are numbered as 14-2 to 14-9.

$$\frac{C'_{SRM}(F_{SRM})}{\beta h} = \int_{\frac{T_g}{a E_{CO_2} - h F_{SRM}}}^{\infty} \gamma f(\gamma) d\gamma \quad (14-2)$$

In order to solve this equation for  $F_{SRM}$ , we need to expand the right-hand side integral so that we obtain:

$$\int_{\frac{T_g}{a E_{CO_2} - h F_{SRM}}}^{\infty} \gamma f(\gamma) d\gamma = \frac{1}{2} \mathbb{E}(\gamma) \left( 1 + \text{Erf} \left[ \frac{\mu + \sigma^2 - \text{Ln} \left( \frac{T_g}{a E_{CO_2} - h F_{SRM}} \right)}{\sigma \sqrt{2}} \right] \right) \quad (14-3)$$

where  $\mathbb{E}(\gamma)$  is the expected value of climate sensitivity in a log-normal distribution,  $\mathbb{E}(\gamma) =$

$$e^{\mu + \frac{\sigma^2}{2}}.$$

$$\frac{C'_{SRM}(F_{SRM})}{\beta h} = \frac{1}{2} \mathbb{E}(\gamma) \left( 1 + \text{Erf} \left[ \frac{\mu + \sigma^2 - \text{Ln} \left( \frac{T_g}{a E_{CO_2} - h F_{SRM}} \right)}{\sigma \sqrt{2}} \right] \right) \quad (14-4)$$

$$\frac{2 C'_{SRM}(F_{SRM})}{\beta h \mathbb{E}(\gamma)} - 1 = \text{Erf} \left[ \frac{\mu + \sigma^2 - \text{Ln} \left( \frac{T_g}{a E_{CO_2} - h F_{SRM}} \right)}{\sigma \sqrt{2}} \right] \quad (14-5)$$

$$\text{InverseErf} \left[ \frac{2 C'_{SRM}(F_{SRM})}{\beta h \mathbb{E}(\gamma)} - 1 \right] = \frac{\mu + \sigma^2 - \text{Ln} \left( \frac{T_g}{a E_{CO_2} - h F_{SRM}} \right)}{\sigma \sqrt{2}} \quad (14-6)$$

$$\text{Ln} \left( \frac{T_g}{a E_{CO_2} - h F_{SRM}} \right) = \mu + \sigma^2 - \sqrt{2} \sigma \text{InverseErf} \left[ \frac{2 C'_{SRM}(F_{SRM})}{\beta h \mathbb{E}(\gamma)} - 1 \right] \quad (14-7)$$

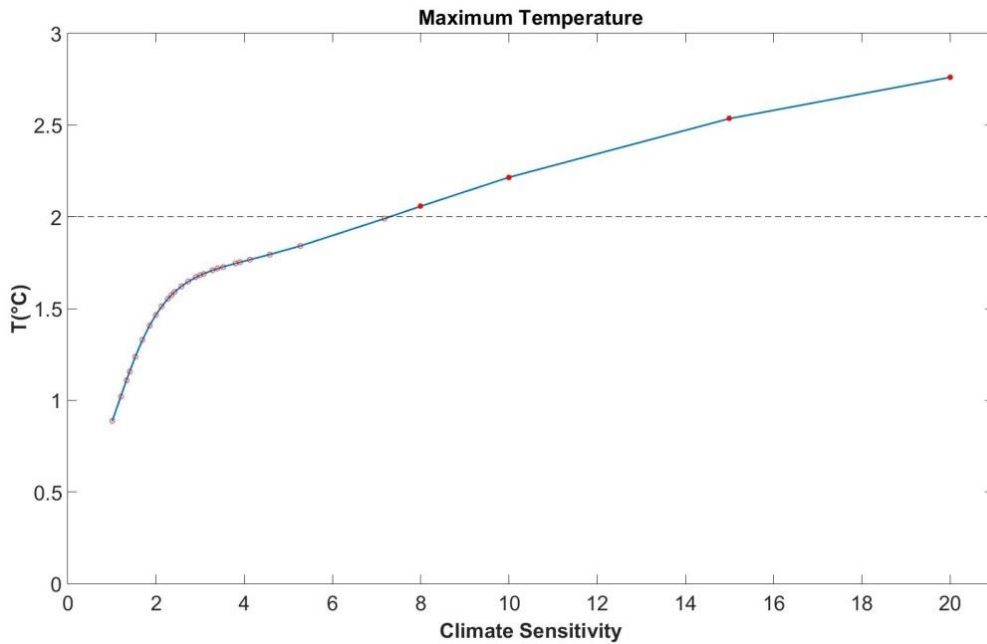
$$\frac{T_g}{a E_{CO_2} - h F_{SRM}} = e^{\mu + \sigma^2 - \sqrt{2} \sigma \text{InverseErf} \left[ \frac{2 C'_{SRM}(F_{SRM})}{\beta h \mathbb{E}(\gamma)} - 1 \right]} \quad (14-8)$$

$$F_{SRM} = \frac{1}{h} (a E_{CO_2} - T_g e^{\sqrt{2} \sigma \text{InverseErf}[\frac{2 C'_{SRM}(F_{SRM})}{\beta h E(\gamma)} - 1]} - \mu - \sigma^2) \quad (14-9)$$

We can insert the optimal emissions  $E_{CO_2}$ , Equation 18, in Equation 14-9. From this, we derive the optimal SRM forcing shown in Equation 19.

### Appendix C

To test the accuracy of our theoretical model, we simulate the temperature-risk-only scenario for a sample of climate sensitivities that range from 1.01°C to 20°C. The result of this sensitivity analysis is displayed in Figure C1. From this figure, it can clearly be seen that if climate sensitivity is higher than 8°C, temperature will transgress the 2°C-temperature guardrail.



**Figure C1.** Maximum temperature for different climate sensitivities in the temperature-risk-only scenario. This figure shows a numerical sensitivity analysis, for 30 different climate sensitivities within the range of 1.01°C to 20°C, to test the accuracy of our analytic solution. The filled circles display climate sensitivities for which temperature will transgress the temperature target by using SRM in the temperature-risk-only scenario.

## **Authors' contributions**

E.R. integrated SRM into CRA, wrote this manuscript, performed the scenario calculations, provided numerical simulations, solved the analytic model, provided analytical calibration, and numerical emulation of the analytical model; M.M.K. and E.R. executed numerical calibration and implemented the convex combination; M.M.K. wrote most of the calibration codes, and optimized the GAMS codes; H.H. and M.M.K. participated in revising the manuscript; H.H. triggered this work, suggested the scheme how to integrate SRM in CRA and the analytic model, and participated in revising the analytical model; E.R. and H.H. designed the scenarios.

## **References**

- Arino Y, Akimoto K, Sano F, Homma T, Oda J, Tomoda T (2016) Estimating option values of solar radiation management assuming that climate sensitivity is uncertain Proceedings of the National Academy of Sciences 113:5886-5891 doi:10.1073/pnas.1520795113
- Bahn O, Chesney M, Gheysens J, Knutti R, Pana AC (2015) Is there room for geoengineering in the optimal climate policy mix? Environmental Science & Policy 48:67-76  
doi:<http://dx.doi.org/10.1016/j.envsci.2014.12.014>
- Bala G, Duffy PB, Taylor KE (2008) Impact of geoengineering schemes on the global hydrological cycle Proceedings of the National Academy of Sciences 105:7664-7669  
doi:10.1073/pnas.0711648105
- Barrett S et al. (2014) Climate engineering reconsidered Nature Clim Change 4:527-529  
doi:10.1038/nclimate2278
- Clarke L et al. (2014) Assessing Transformation Pathways. Cambridge, United Kingdom and New York, NY, USA



- Crutzen PJ (2006) Albedo Enhancement by Stratospheric Sulfur Injections: A Contribution to Resolve a Policy Dilemma? *Climatic Change* 77:211 doi:10.1007/s10584-006-9101-y
- den Elzen MGJ, van Vuuren DP (2007) Peaking profiles for achieving long-term temperature targets with more likelihood at lower costs *Proceedings of the National Academy of Sciences* 104:17931-17936 doi:10.1073/pnas.0701598104
- Edenhofer O, Bauer N, Kriegler E (2005) The impact of technological change on climate protection and welfare: Insights from the model MIND *Ecological Economics* 54:277-292 doi:<http://dx.doi.org/10.1016/j.ecolecon.2004.12.030>
- Ekholm T, Korhonen H (2016) Climate change mitigation strategy under an uncertain Solar Radiation Management possibility *Climatic Change* 139:503-515 doi:10.1007/s10584-016-1828-5
- Emmerling J, Tavoni M (2018) Climate Engineering and Abatement: A ‘flat’ Relationship Under Uncertainty *Environmental and Resource Economics* doi:10.1007/s10640-016-0104-5
- Goes M, Tuana N, Keller K (2011) The economics (or lack thereof) of aerosol geoengineering *Climatic Change* 109:719-744 doi:10.1007/s10584-010-9961-z
- Held H (2019) Cost Risk Analysis: Dynamically Consistent Decision-Making under Climate Targets *Environmental and Resource Economics* 72:247-261 doi:10.1007/s10640-018-0288-y
- Held H, Kriegler E, Lessmann K, Edenhofer O (2009) Efficient climate policies under technology and climate uncertainty *Energy Economics* 31:S50-S61 doi:<http://dx.doi.org/10.1016/j.eneco.2008.12.012>

- Heutel G, Moreno-Cruz J, Shayegh S (2016) Climate tipping points and solar geoengineering  
Journal of Economic Behavior and Organization 132:19-45  
doi:<https://doi.org/10.1016/j.jebo.2016.07.002>
- Heutel G, Moreno-Cruz J, Shayegh S (2018) Solar geoengineering, uncertainty, and the price of  
carbon Journal of Environmental Economics and Management 87:24-41  
doi:<https://doi.org/10.1016/j.jeem.2017.11.002>
- Keith DW (2000) GEOENGINEERING THE CLIMATE: History and Prospect Annual Review  
of Energy and the Environment 25:245-284 doi:10.1146/annurev.energy.25.1.245
- Klepper G, Rickels W (2012) The Real Economics of Climate Engineering Economics Research  
International 2012:20 doi:10.1155/2012/316564
- Kolstad C et al. (2014) Social, Economic, and Ethical Concepts and Methods. Cambridge,  
United Kingdom and New York, NY, USA
- Kravitz B et al. (2013a) Climate model response from the Geoengineering Model  
Intercomparison Project (GeoMIP) Journal of Geophysical Research: Atmospheres  
118:8320-8332 doi:10.1002/jgrd.50646
- Kravitz B et al. (2013b) An energetic perspective on hydrological cycle changes in the  
Geoengineering Model Intercomparison Project Journal of Geophysical Research:  
Atmospheres 118:13,087-013,102 doi:10.1002/2013JD020502
- Kriegler E, Bruckner T (2004) Sensitivity Analysis of Emissions Corridors for the 21st Century  
Climatic Change 66:345-387 doi:10.1023/b:clim.0000044615.75251.02
- Kunreuther H et al. (2014) Integrated Risk and Uncertainty Assessment of Climate Change  
Response Policies. Cambridge, United Kingdom and New York, NY, USA

- Lorenz A, Schmidt MGW, Kriegler E, Held H (2012) Anticipating Climate Threshold Damages  
Environmental Modeling & Assessment 17:163-175 doi:10.1007/s10666-011-9282-2
- Lunt DJ, Ridgwell A, Valdes PJ, Seale A (2008) “Sunshade World”: A fully coupled GCM  
evaluation of the climatic impacts of geoengineering Geophysical Research Letters  
35:n/a-n/a doi:10.1029/2008GL033674
- MacMartin DG, Kravitz B, Keith DW Geoengineering: The world's largest control problem. In:  
2014 American Control Conference, 4-6 June 2014 2014. pp 2401-2406.  
doi:10.1109/ACC.2014.6858658
- Matthews HD, Caldeira K (2007) Transient climate–carbon simulations of planetary  
geoengineering Proceedings of the National Academy of Sciences 104:9949-9954  
doi:10.1073/pnas.0700419104
- McClellan J, Keith DW, Apt J (2012) Cost analysis of stratospheric albedo modification delivery  
systems Environmental Research Letters 7:034019
- Moreno-Cruz JB, Keith DW (2013) Climate policy under uncertainty: a case for solar  
geoengineering Climatic Change 121:431-444 doi:10.1007/s10584-012-0487-4
- Neubersch D (2014) Value of Information under Climate Targets: an Application of Cost-Risk  
Analysis. University of Hamburg
- Neubersch D, Held H, Otto A (2014) Operationalizing climate targets under learning: An  
application of cost-risk analysis Climatic Change 126:305-318 doi:10.1007/s10584-014-  
1223-z
- Robock A, Marquardt A, Kravitz B, Stenchikov G (2009) Benefits, risks, and costs of  
stratospheric geoengineering Geophysical Research Letters 36:n/a-n/a  
doi:10.1029/2009GL039209

- Robock A, Oman L, Stenchikov GL (2008) Regional climate responses to geoengineering with tropical and Arctic SO<sub>2</sub> injections *Journal of Geophysical Research: Atmospheres* 113:n/a-n/a doi:10.1029/2008JD010050
- Roe GH, Baker MB (2007) Why Is Climate Sensitivity So Unpredictable? *Science* 318:629-632 doi:10.1126/science.1144735
- Roshan E, Khabbazan MM, Held H (2019) Cost-Risk Trade-Off of Mitigation and Solar Geoengineering: Considering Regional Disparities Under Probabilistic Climate Sensitivity *Environmental and Resource Economics* 72
- Schmidt H et al. (2012) Solar irradiance reduction to counteract radiative forcing from a quadrupling of CO<sub>2</sub>: climate responses simulated by four earth system models *Earth Syst Dynam* 3:63-78 doi:10.5194/esd-3-63-2012
- Schmidt MGW, Lorenz A, Held H, Kriegler E (2011) Climate targets under uncertainty: challenges and remedies *Climatic Change* 104:783-791 doi:10.1007/s10584-010-9985-4
- Schneider von Deimling T, Held H, Ganopolski A, Rahmstorf S (2006) Climate sensitivity estimated from ensemble simulations of glacial climate *Climate Dynamics* 27:149-163 doi:10.1007/s00382-006-0126-8
- Shepherd J et al. (2009) *Geoengineering the climate - Science, governance and uncertainty* The Royal Society
- Smith SJ, Rasch PJ (2013) The long-term policy context for solar radiation management *Climatic Change* 121:487-497 doi:10.1007/s10584-012-0577-3
- Stankowitz M, Schmidt H, Roshan E, Pieper P, Held H (2015) Integrated mitigation and solar radiation management scenarios under combined climate guardrails. In: EGU General Assembly 2015, Vienna, Austria, 12-17 April 2015.

- Tilmes S et al. (2013) The hydrological impact of geoengineering in the Geoengineering Model Intercomparison Project (GeoMIP) Journal of Geophysical Research: Atmospheres 118:11,036-011,058 doi:10.1002/jgrd.50868
- Tilmes S, Müller R, Salawitch R (2008) The Sensitivity of Polar Ozone Depletion to Proposed Geoengineering Schemes Science 320:1201-1204 doi:10.1126/science.1153966
- UNFCCC (2011) Report of the Conference of the Parties on its seventeenth session, held in Durban from 28 November to 11 Addendum. Part Two: Action taken by the Conference of the Parties at its seventeenth session. Decision 1/CP.17: Establishment of an Ad Hoc Working Group on the Durban Platform for Enhanced Action FCCC/CP/2011/9/Add 1
- UNFCCC (2015) Adoption of the Paris Agreement, United Nations Framework Convention on Climate Change. United Nations Office, Geneva, Switzerland
- Wigley TML, Raper SCB (2001) Interpretation of High Projections for Global-Mean Warming Science 293:451-454 doi:10.1126/science.1061604