



Salmonid & Freshwater Fisheries Statistics for England & Wales, 2013

Including declared catches for salmon, sea trout, eels, smelt and lamprey by rods, nets
and other instruments

Version 2 December 2014

We are the Environment Agency. We protect and improve the environment and make it a better place for people and wildlife.

We operate at the place where environmental change has its greatest impact on people's lives. We reduce the risks to people and properties from flooding; make sure there is enough water for people and wildlife; protect and improve air, land and water quality and apply the environmental standards within which industry can operate.

Acting to reduce climate change and helping people and wildlife adapt to its consequences are at the heart of all that we do.

We cannot do this alone. We work closely with a wide range of partners including government, business, local councils, other agencies, civil society groups and the communities we serve.

Published by:

Environment Agency
Horizon house, Deanery Road,
Bristol BS1 5AH
Email: enquiries@environment-agency.gov.uk
www.environment-agency.gov.uk

Further copies of this report are available
from our publications catalogue:
<http://publications.environment-agency.gov.uk>
or our National Customer Contact Centre:
T: 03708 506506

© Environment Agency 2011

Email: enquiries@environment-agency.gov.uk.

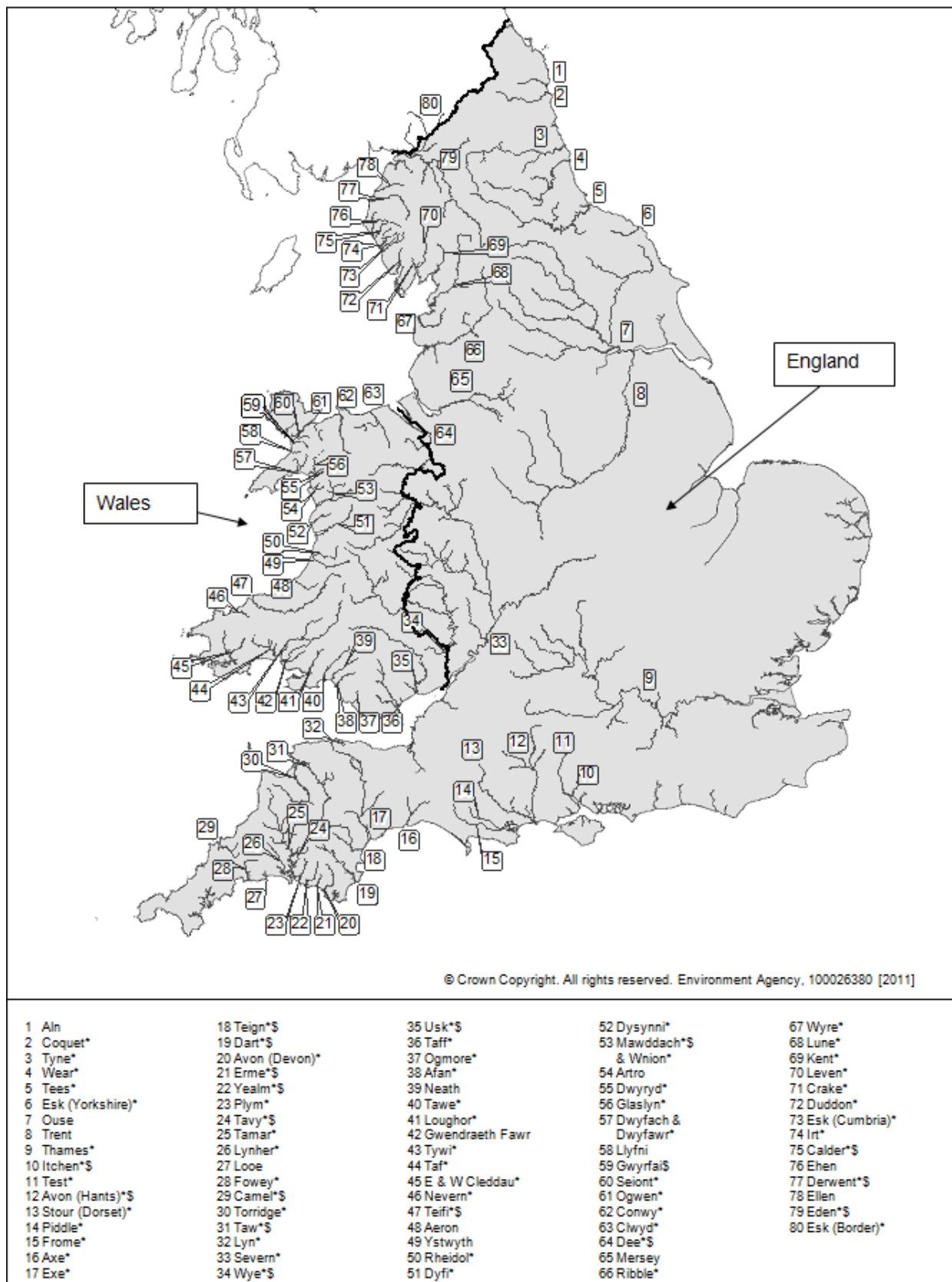
All rights reserved. This document may be reproduced
with prior permission of
the Environment Agency.

Acknowledgements

The Environment Agency & Natural Resources Wales would like to take this opportunity to thank all the fishermen who sent us their catch returns last year. Your returns help us understand fishery statuses and help us protect fish stocks, without your returns this report would not be possible.

Major salmon and sea trout rivers and fisheries in England and Wales

Figure 3. Map of England and Wales showing the main salmon rivers and denoting those with Salmon Action Plans (*) and those designated as Special Areas of Conservation (\$) in which salmon must be maintained or restored to favourable conservation status.



Contents

1.	Introduction	6
2.	The Environment Agency and its Regions	6
3.	Rod and net licence catch returns	6
4.	National overview and summary of main findings	7
	Table 1	Summary of declared salmon and sea trout catches England & Wales (2013, 2012 and 5-year mean)
	Table 2	Summary of total salmon and sea trout net and fixed engine catches and weights (2013)
	Table 3	Summary of total salmon and sea trout catches and weights (2013)
	Figure 1	Number of net licences issued (1985-2013) and number of days declared fished by salmon and sea trout rod licence holders (1994-2013), England & Wales
	Figure 2	Total salmon net catches for England & Wales (1956-2013)
	Figure 3	Total salmon rod catches for England & Wales (1956-2013)
	Figure 4	Total sea trout net catches for England & Wales (1978-2013)
	Figure 5	Total sea trout rod catches for England & Wales (1978-2013)
5.	Regional Catch Summaries	12
	Table 4	Summary of salmon net catches by Region (2013, 2012 and 5-year mean)
	Table 5	Summary of sea trout net catches by Region (2013, 2012 and 5-year mean)
	Table 6	Summary of salmon rod catches by Region (2013, 2012 and 5-year mean)
	Table 7	Summary of sea trout rod catches by Region (2013, 2012 and 5-year mean)
	Figure 6	Salmon and sea trout net catches by Region (2013)
	Figure 7	Salmon and sea trout rod catches by Region (2013)
6.	Description of data tables 1 to 21	14
	Data tables 1 to 21	15
7.	References	41
8.	Glossary	41

Section 1

Introduction

This report is the Environment Agency's nineteenth collation of salmon and sea trout catch statistics for England and Wales and the Border Esk in Scotland. From 1989 to 1994, these statistics were published by the National Rivers Authority (NRA). The Ministry of Agriculture, Fisheries and Food, Directorate of Fisheries Research also included them in its Data Report series between 1983 and 1988.

This report is a reference document of declared salmonid catches in England, Wales and Border Esk. It also reports declared catches from other authorised net fisheries in England and Wales the Environment Agency and Natural Resources Wales regulates.

Salmon stock assessment data (including provisional catches and run estimates) are published in an

annual assessment for the International Council for the Exploration of the Seas (ICES). The seventeenth report in this series was published jointly by the Environment Agency and the Centre for Environment, Fisheries & Aquaculture Science (Cefas) in April 2014.

The catch data recorded here represent declared catches only. This document should not, therefore, be accepted as a definitive record of the total numbers of fish landed. Furthermore, the relationship between catch and stock size is complex, regardless of the accuracy of the catch data. Great care must be taken therefore in interpreting these data.

Section 2

The Environment Agency and its regions

The Environment Agency (EA) is a non-departmental public body established by the Environment Act 1995. It has taken over the functions of its predecessors, the National Rivers Authority, Her Majesty's Inspectorate of Pollution, Waste Regulation Authorities and some parts of the Department of the Environment. The Environment Agency came into effect on 1 April 1996.

There are six Environment Agency Regions: North East & Yorkshire, Anglian, South East (Thames & Southern combined), South West, Midlands and North West. On 1st April 2013 Environment Agency Wales

left the EA and became part of Natural Resources Wales (NRW) and is still included throughout this report. The Border Esk in Scotland is regulated by North West region and for the purposes of this report will be included as part of the North West statistics. Throughout this report references to salmon and sea trout fisheries in England and Wales includes the parts of the Border Esk in Scotland.

Section 3

Rod and net licence catch returns

Salmon and sea trout rod licence holders are legally required to submit a full and accurate catch return to the Agency by 1 January in the following year. Commercial net and fixed engine licence holders must submit their returns within 14 days of the end of their respective fishing seasons.

Logbook return compliance was good with only 10 netsman requiring a 1st reminder. All logbooks were accounted for in 2013

In the 1st week of December 2013, the Environment Agency sent a reminder to all holders of a salmon and sea trout rod licence yet to declare their catch.

The deadline to submit catch returns was 31 December 2013.

A further reminder was sent to 2461 anglers by email in March 2014 as a substitute 2nd reminder which yielded 686 more returns. This brought the total returns to 20896.

Section 4

National overview and summary of main findings

Table 1 Summary of declared salmon and sea trout rod and net catches for England and Wales in 2013 showing % change on 2012 and the 5- year mean (2008-2012).

	2013	2012	5-yr. mean (2008-2012)	% change (+/-)	
				2013 on 2012 5-yr. mean	2013 on 5- yr mean
RODS					
*Licences issued	33,301	35,122	35,725	-5%	-7%
*Days declared fished	164,449	167,257	182,713	-2%	-10%
Salmon caught	14,920	18,450	19,353	-19%	-23%
% Salmon released	70%	65%	62%	8%	12%
(number released)	10,458	11,952	12,079	-13%	-13%
Sea trout caught	29,427	30,700	32,717	-4%	-10%
% Sea trout released	77%	71%	64%	8%	20%
(number released)	22,607	21,841	22,975	4%	-2%
NETS					
Licences issued	304	294	316	3%	-7%
Salmon caught	18,143	8,451	14,642	115%	24%
Sea trout caught	43,375	24,389	35,061	78%	24%

* Salmon and sea trout licences only

RODS SUMMARY

- The number of salmon and sea trout rod licences issued in 2013 (33,301) decreased by 5% compared with 2012 and is comparable with the mean of the previous five years (2008-2012).
- The total declared salmon caught by rod in 2013 (14,920) decreased by 19% compared with 2012, with a 23% decrease when compared with the 5-year mean (19,353).
- The total declared sea trout caught by rod in 2013 (29,427) decreased by 4% compared with 2012 (30,700) and has decreased by 10% when compared with the 5-year mean (32,717).
- Catch-and-release rates for rod caught salmon (70%) and sea trout (77%) in 2013 showed a 8% increase for both salmon and sea trout on those recorded in 2012.
- 44% of salmon and 58% of sea trout were caught by anglers using a fly in 2013, spinning yielded 40% of salmon and 27% of sea trout with bait capturing 15% of salmon and 14% of sea trout. As in previous years 3% of catches had no method information. Changes of note saw a 13% increase for sea trout caught using a fly and a decrease of 11% of sea trout caught using spinning. All other changes were minor of 3% or less.

- The river with the highest declared rod catch of salmon in 2013 was the Tyne (3,874) followed by the Wear (1,731) the Wye (817), the Eden (627) and the Usk (543). 25% of the total England and Wales rod catch of salmon was recorded on the Tyne in 2013, this shows an increase of 3% from 2012.
- The river with the highest declared rod catch of sea trout in 2013 was the Dyfi (1,828) followed by the Tywi (1,586), Wear (1,523) and the Teifi (1,491). The number of sea trout caught overall in 2013 was almost 1,300 less than in 2012.
- Please note that for salmon on the Wye, Test and Itchen rivers data from catch returns has been used in preference to owners data, as has been used in the past.

NETS SUMMARY

- A total of 304 salmon and sea trout commercial net licences were issued in 2013. This compares with 294 in 2012 and a 5-year mean of 316. Since 1985 there has been a 70% reduction in the number of net licences issued annually in England and Wales (from 1,026 to 304).
- The salmon net catch in 2013 (18,143) increased significantly by 115% compared with the previous year and by 24% when compared with the 5-year mean (14,642). Whilst most fisheries showed increases that averaged 41%, the North East fishery showed an increase at 128% (7,299 to 16,643 fish). Whilst the North West fishery showed an increase of 52% (577 to 877 fish).
- The average weight of net caught salmon in 2013 was 3.70 kg. This compares with an average weight of 3.65 kg for rod caught salmon.
- Net fisheries exempted from the 'spring' byelaws (that is those targeting sea trout) released all salmon before 1 June. All salmon caught in the South West were released (286 in total).
- A total of 43,375 sea trout were declared caught by the net fisheries in 2013, a increase of 78% compared with the 2012 catch and a increase of 24% compared with the 5-year mean.
- The average weight of net and rod caught sea trout in 2013 was 1.8 kg and 0.8kg respectively.

Section 4

Table 2 Summary of total salmon and sea trout net and fixed engine catches and weights, 2013

	Salmon		Sea trout	
	Number	Weight (t.)	Number	Weight (t.)
Caught	18,143	67	43,375	78
Retained	18,115	67	43,354	78
Released	28	0.12	21	0.01

Table 3 Summary of total salmon and sea trout rod catches and weights, 2013

	Salmon		Sea trout	
	Number	Weight (t)*	Number	Weight (t.)
Caught	14,920	62.2	29,427	23.58
Retained	4,462	17	6,820	7.58
Released	10,458	45.2	22,607	16

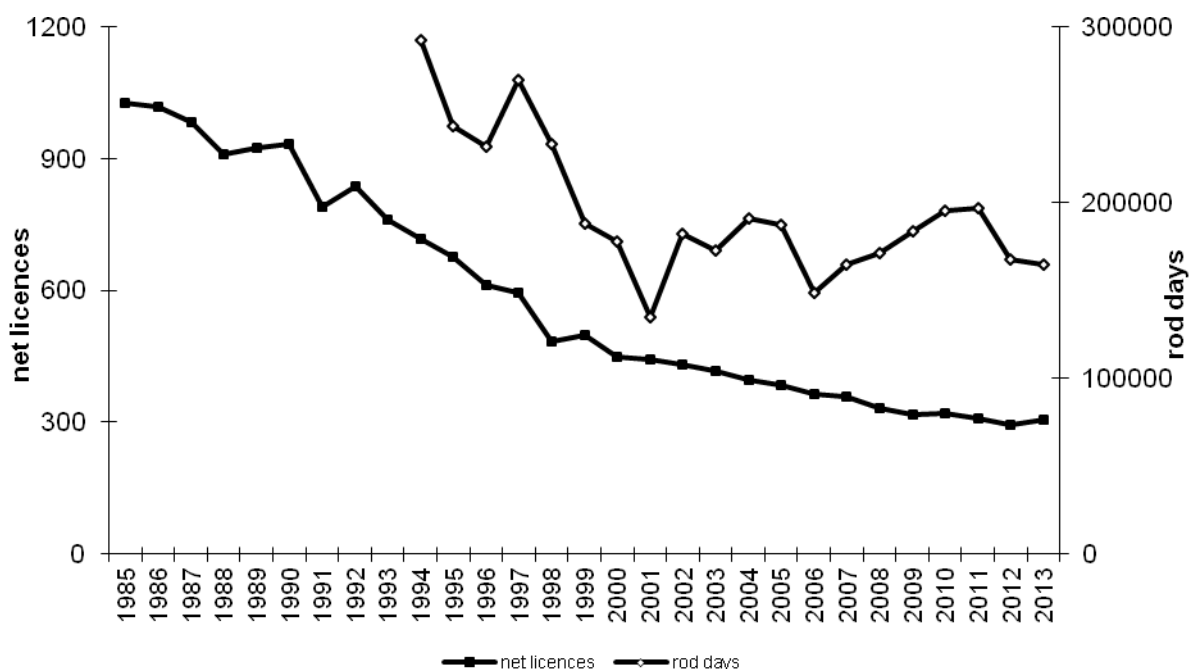


Figure 1 Number of net and fixed engine licences issued (1985-2013) and total number of days fished by salmon and sea trout rod licence holders (1994-2013), England & Wales.

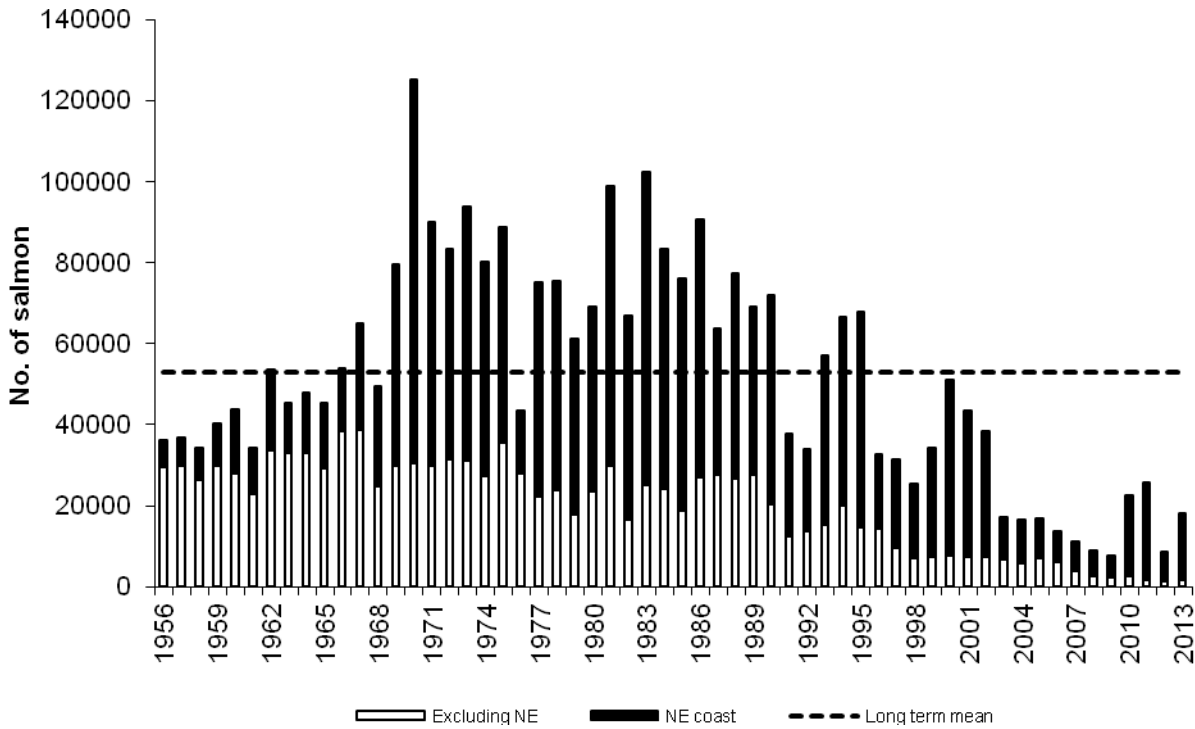


Figure 2 Total declared salmon net and fixed engine catch for England & Wales, 1956-2013 (shaded area indicates the catch for the North East Coast fishery).

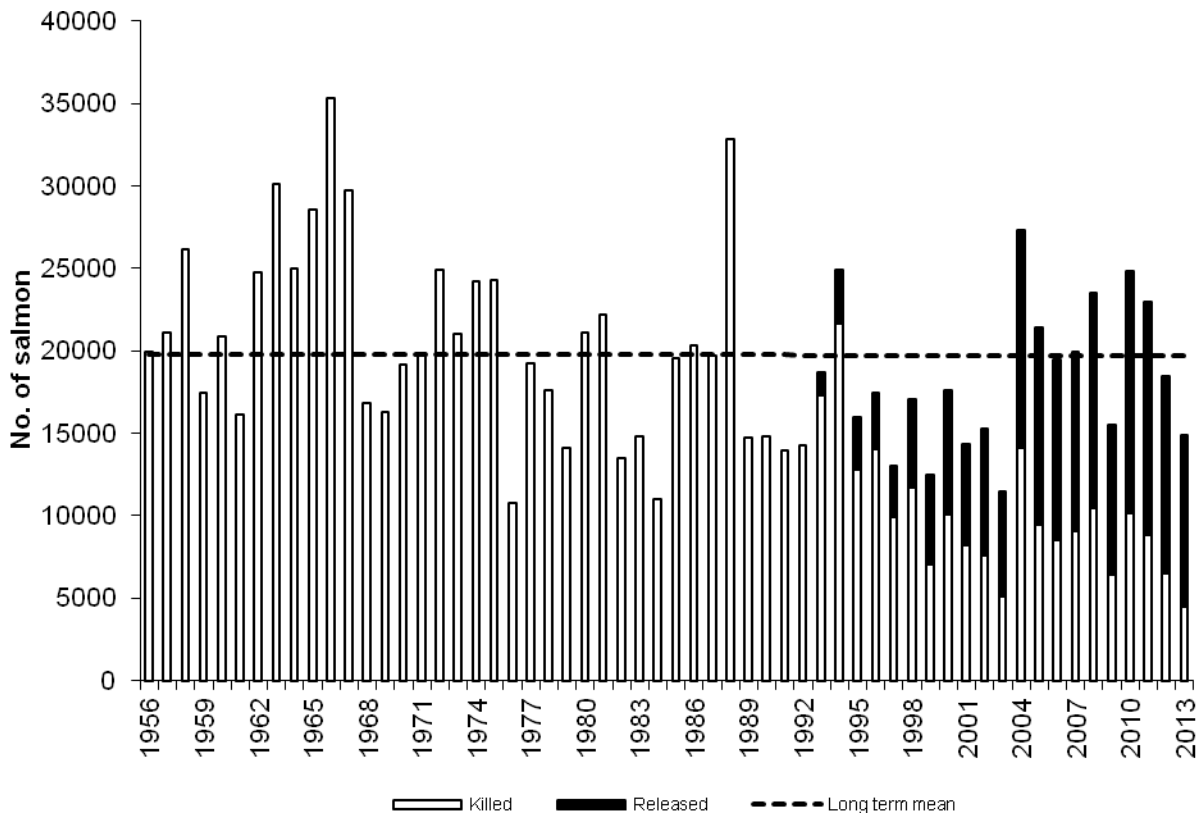


Figure 3 Total declared salmon rod catch for England & Wales, 1956-2013 (shaded area indicates fish caught and released).

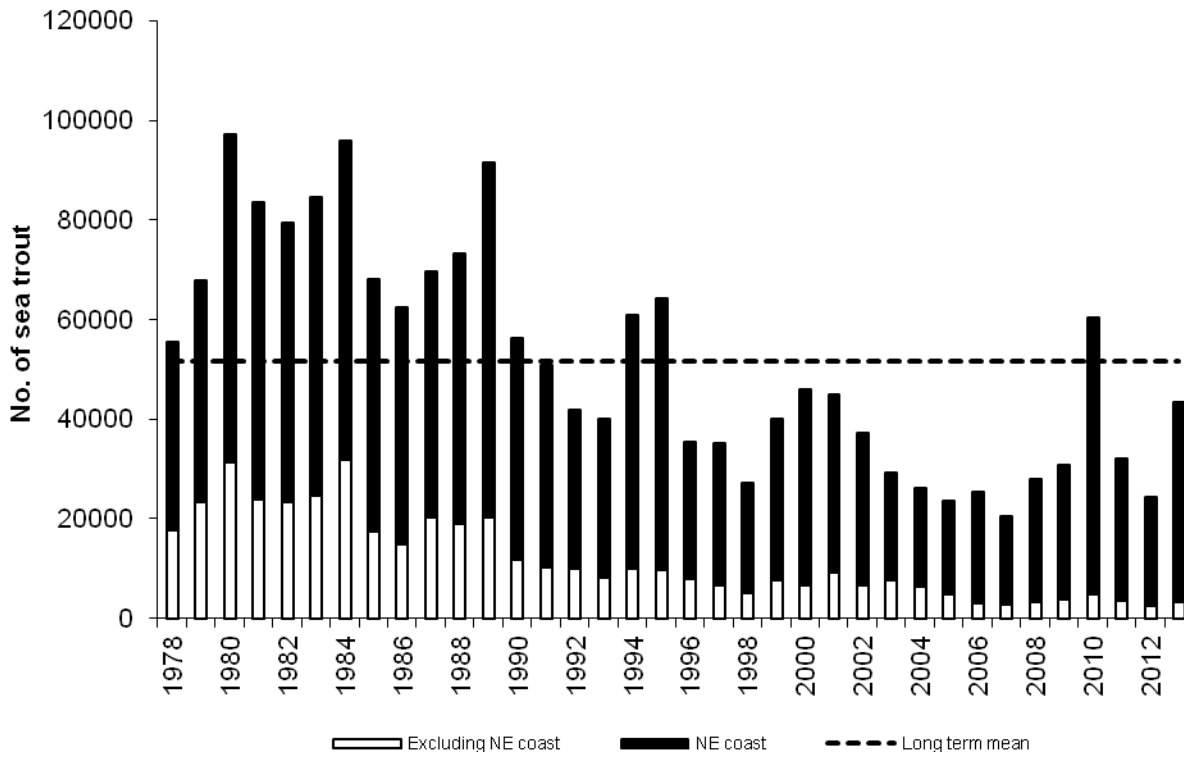


Figure 4 Total declared sea trout net and fixed engine catch for England & Wales, 1978-2013 (shaded area indicates the catch for the North East coast fishery).

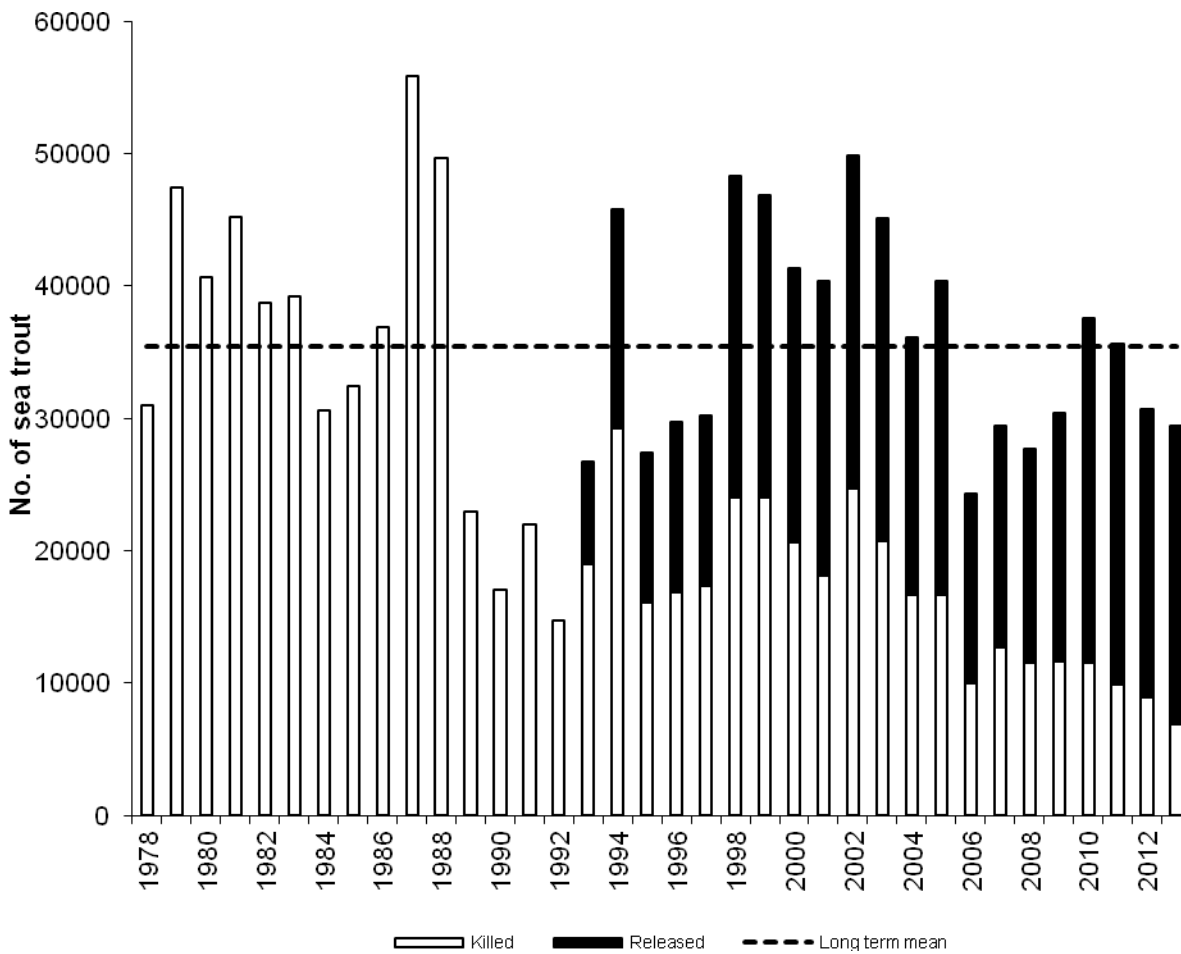


Figure 5 Total declared sea trout rod catch for England & Wales, 1978-2013 (shaded area indicates fish caught and released).

Section 5

Regional catch summaries (2013, 2012 and 5- year mean)

Table 4 Summary of salmon net and fixed engine catches by Region

	2013	2012	5-year mean (2008-2012)	% change (+/-) 2013 on 2012	% change (+/-) 2013 on 5-yr mean
North East	16,643	7,299	12,796	128%	30%
Anglian	2	2	4	0%	-44%
South East	0	0	0	-	-
South West	286	257	392	11%	-27%
Midlands	131	210	475	-38%	-72%
Wales	204	106	162	92%	26%
North West	877	577	997	52%	-12%

Table 5 Summary of sea trout net and fixed engine catches by Region

	2013	2012	5-year mean (2008-2012)	% change (+/-) 2012 on 2011	% change (+/-) 2012 on 5-yr mean
North East	40,194	21,953	31,592	83%	27%
Anglian	428	401	552	7%	-23%
South East	0	0	0	-	-
South West	298	270	584	10%	-49%
Midlands	2	2	475	100%	-100%
Wales	1837	1390	1574	32%	17%
North West	618	373	742	66%	-17%

Table 6 Summary of salmon rod catches by Region

	2013	2012	5-year mean (2008-2012)	% change (+/-) 2013 on 2012	% change (+/-) 2013 on 5-yr mean
North East	6,469	6,465	6,568	0%	-2%
Anglian	0	0	0.2	0%	0%
South East *	271	364	449.8	-26%	-19%
South West	1085	2022	2277.2	-46%	-11%
Midlands	332	249	271	33%	-8%
Wales	3224	4740	4915	-32%	-4%
North West	3,539	4,609	6,590	-23%	-30%

Table 7 Summary of sea trout rod catches by Region

	2013	2012	5-year mean (2008-2012)	% change (+/-) 2013 on 2012	% change (+/-) 2013 on 5-yr mean
North East	3,751	4,037	4,638	-7%	-19%
Anglian	13	10	3.8	30%	242%
South East*	914	727	768.4	26%	19%
South West	6,379	4,849	6038	32%	6%
Midlands	22	18	40	22%	-46%
Wales	12,354	14,580	15010.8	-15%	-18%
North West	5,994	6,476	5,874	-7%	2%

Section 5

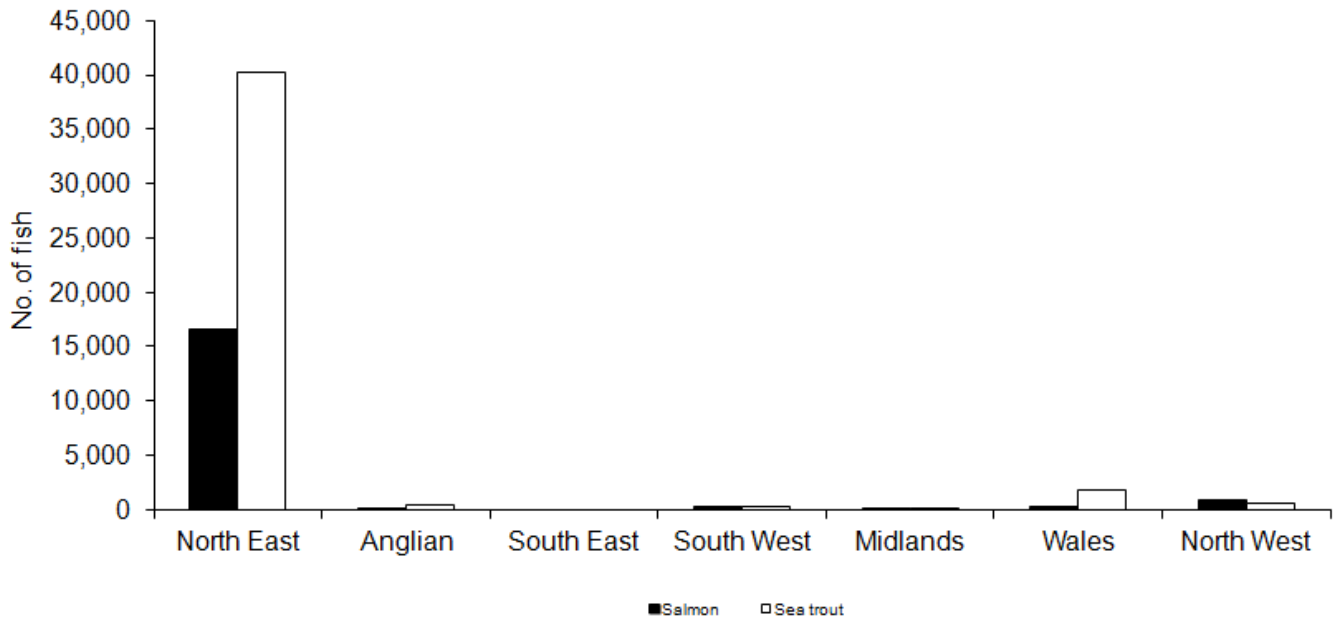


Figure 6 Declared salmon and sea trout net and fixed engine catches by Region, 2013.

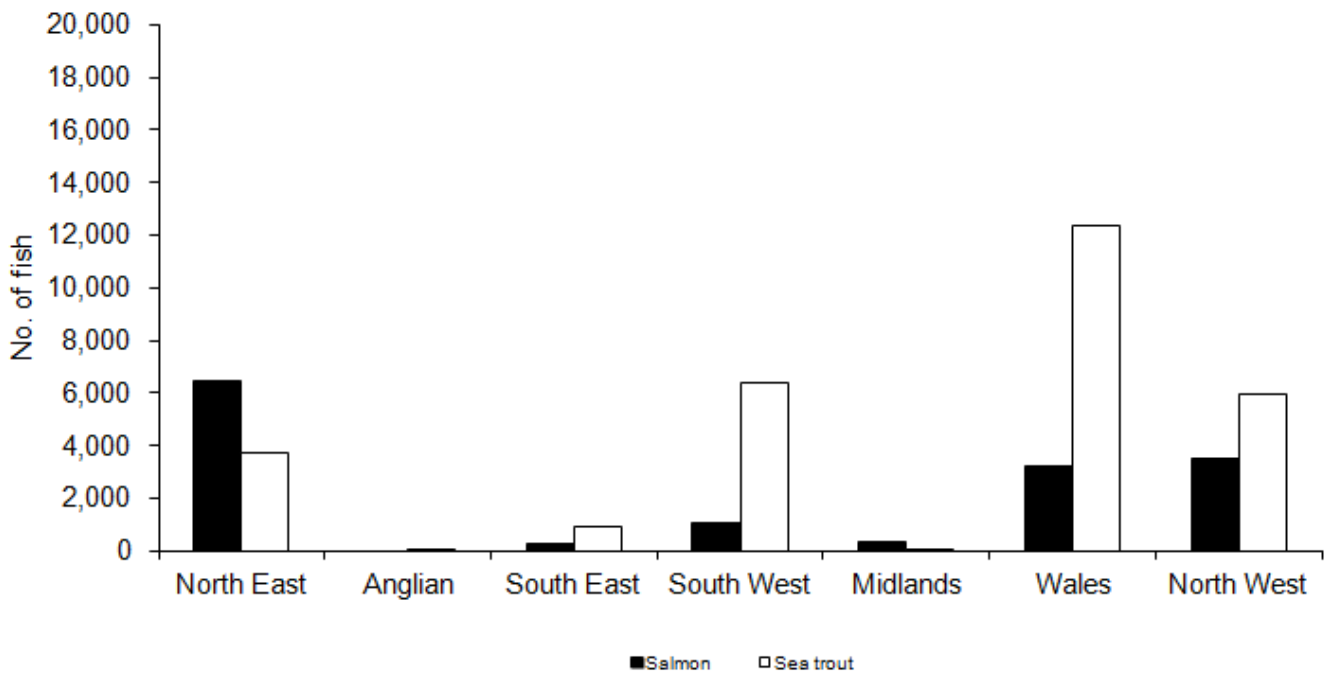


Figure 7 Declared salmon and sea trout rod catches by Region, 2013.

Section 6

Tables

Table 1	Licensed Net Fishing - Number & Value 2013 Season
Table 2	Eel, Elver, Lamprey and Smelt authorisations – Number and Value 2013 Season
Table 3	National Rod Fishing Licences – Number and Value Licences valid from 1 April 2013- 31 March 2014
Table 4	Net Season & Weekly Closure Times - Salmon & Sea Trout – 2013 Season
Table 5	Rod Fishing Season for Salmon & Sea Trout including method restrictions & bag limits 2013
Table 6	Main Updates for Rod & Net fisheries in 2013
Table 7	Salmon Net Catches – 2013 Season
Table 8	Sea Trout Net Catches – 2013 Season
Table 9	Salmon Rod Catches (released totals in brackets) – 2013 Season
Table 10	Sea Trout Rod Catches (released totals in brackets) – 2013 Season
Table 11	Rod Caught Salmon & Sea Trout, Average Weight (kg) - 2013 Season
Table 12	Number of rod caught salmon in weight categories (lb & kg) – 2013 Season
Table 13	Number of rod caught sea trout in weight categories (lb & kg) - 2013 Season
Table 14	Summary of salmon net catches, 2003 - 2013
Table 15	Summary of sea trout net catches, 2003 - 2013
Table 16	Summary of salmon rod catch, 2003 - 2013
Table 17	Summary of sea trout rod catch, 2003 - 2013
Table 18	Reported Net Effort data for Salmon & Sea Trout- 2013 Season
Table 19	Reported Rod Effort Data for Salmon & Sea Trout – 2013 Season
Table 20	Estimated Proportions of Grilse & Multi- Sea Winter (MSW) Salmon in Declared Rod Catch- 2013 Season
Table 21	Salmon Stocking – number of eggs, fry, parr and smolts released – 2013
Table 22	Sea Trout Stocking – number of eggs, fry, parr and smolts released – 2013

Section 6

Table 1 Licensed Net Fishing - Number & Value 2013 Season

Environment Agency Region	Fishing Method	Number of licences	Number of licensees (a)	Duty (£)	Value* (£)
North East Northumbria Area	Coastal (N) drift and T nets	6	3	1,313.00	3,939.00
	Coastal (N) drift nets	9	9	1,206.00	10,854.00
	Coastal (N) T nets	22	22	842.00	18,524.00
	Coastal (S) T nets	1	1	842.00	842.00
	Total	38	35		34,159.00
North East Yorkshire Area	Coastal drift nets	1	1	944.00	944.00
	Coastal T or J nets	30	30	842.00	25,260.00
	Total	31	31		26,204.00
Anglian	Drift nets	19	19	79.00	1,501.00
	Other nets (various)	5	5	79.00	395.00
	Total	24	24		1,896.00
South East	Seine nets	1	1	79.00	79.00
	Total	1	1		79.00
South West	Seine nets	1	1	381.00	381.00
	Total	1	1		381.00
South West Devon & Cornwall	Seine nets (single river)	17	17	343.00	5,831.00
	Drift nets (Camel)	6	6	314.00	1,884.00
	Total	23	23		7,715.00
Midlands	Lave nets (half season)	28	28	60.00	1,680.00
	Seine nets	1	1	285.00	285.00
	Fixed Engine ranks: 4 units (50 putchers per unit)	1	1	79.00 per unit	79.00
	Total	30	30		2,044.00
Wales	Compass nets	6	6	96.00	576.00
	Coracle nets (Teifi, Taf)	12	12	248.00	2,976.00
	Coracle nets (Towy)	8	8	555.00	4,440.00
	Wade nets	1	1	79.00	79.00
	Seine nets (Dyfi, Towy, Teifi)	8	8	582.00	4,656.00
	Seine nets (Dysynni, Conwy)	4	4	372.00	1,488.00
	Seine nets (Nevern, Mawddach)	3	3	261.00	783.00
	Lave nets	8	8	79.00	632.00
	Total	50	50		15,630.00
North West	Haaf nets (Solway)	55	55	143.00	7,865.00
	Drift nets (Ribble)	4	4	424.00	1,696.00
	Haaf nets (Lune)	12	12	285.00	3,420.00
	Drift nets (Lune)	7	7	582.00	4,074.00
	Lave nets (Kent)	4	4	143.00	572.00
	Lave nets (Leven)	1	1	143.00	143.00
	Coop Traps (Eden)	3	3	367.00	1,101.00
	Total	86	86		18,871.00
England & Wales	Total	284	281		106,979.00
Key: * Value is calculated by the number of licensees multiplied by duty					

Section 6

Table 2

Eel, Elver, Lamprey and Smelt authorisations – Number and Value 2013 Season

Fishery	Authorisations				CATCHES (Kg)			
	Number of licences (a)	Method	No. instruments	Income (£)	Method	Elver	Yellow Eel	Silver Eel
Adult Eel	32	Small wingless traps	341	442.00	Small wingless traps	n/a	5,167	440
	87	Fyke nets	2,211	13,266.00	Fyke nets	n/a	21,933	4,868
	6	Fixed Traps	7	805.00	Fixed Traps	n/a	1	823
	Total		2,559.00	14,513.00	Total	n/a	27,101	6,131
Elver	490	Dip Net	490	41,650.00	Dip Net	5,950	n/a	n/a
	Total		490	41,650.00	Total	5,950	n/a	n/a
Grand Total			3,049	56,163	Grand Total	5,950	27,101	6,131

Fishery	Authorisations				CATCHES (Kg)	
	Number of licences (a)	Method	No. instruments	Income (£)	Method	Lamprey
Lamprey	3	Pot Traps	160	£320.00	Pot Traps	1,241
	1	Fyke Nets	0	0	Fyke Nets	15
Total			160	£320.00	Total	1,256

Fishery	Authorisations				CATCHES (Kg)	
	Number of licences (a)	Method	No. instruments	Income (£)	Method	Smelt
Smelt	2	Pot Traps	274	£240.00	Pot Traps	12,499
	3	Fyke Nets	322	£80.00	Fyke Nets	1,727
Total			596	£320.00	Total	14,226

Section 6

Table 3 National Rod Fishing Licences – Number and Value Licences valid from 1 April 2013 - 31 March 2014

Environment Agency Region	Non-migratory trout and coarse fish						Salmon and sea trout						All licences	
	Full Duty £27.00	Concession Duty £18.00	Junior Duty £5.00	8 Day Duty £10.00	1 Day Duty £3.75	Total	Full Duty £72.00 (a)	Concession Duty £48.00 (a)	Junior Duty £5.00	8 Day Duty £23.00	1 Day Duty £8.00	Total	Total Number	(%)
North East	72,491	26,864	9,932	5,553	56,562	171,402	2,615	1,572	414	326	1,214	6,141	177,543	14%
Anglian	100,842	34,303	13,649	7,901	58,915	215,610	292	257	219	284	332	1,384	216,994	17%
Thames	80,435	22,343	9,619	6,965	53,417	172,779	833	359	292	410	736	2,630	175,409	13%
Southern	72,139	22,840	10,076	7,810	56,044	168,909	693	397	298	299	553	2,240	171,149	13%
South West	39,604	13,626	5,060	3,496	26,903	88,689	1,581	1,049	268	209	661	3,768	92,457	7%
Midlands	113,009	45,262	13,963	7,204	68,823	248,261	1,111	984	268	306	635	3,304	251,565	19%
Wales	20,832	7,536	3,472	1,505	16,414	49,759	2,979	2,067	533	173	553	6,305	56,064	4%
North West	69,090	24,660	9,196	4,954	37,463	145,363	3,017	2,242	484	230	980	6,953	152,316	12%
Unknown	1,198	482	218	2,402	2,297	6,597	105	71	14	127	236	553	7,150	1%
Total	569,640	197,916	75,185	47,790	376,838	1,267,369	13,226	8,998	2,790	2,364	5,900	33,278	1,300,647	
Total Value (£)	£15,380,280	£3,562,488	£375,925	£477,900	£1,413,143	21,209,736	£1,028,592	£397,452	£16,645	£54,372	£47,200	£1,544,261	£22,753,997	

(a) Full and concession salmon and sea trout licences include upgrades from non-migratory trout and coarse fish licences.

Section 6

Table 4 Net Season & Weekly Closure Times- Salmon & Sea Trout – 2013

Environment Agency Region	River/ Fishery	Fishing Method	Season inclusive dates (see below)	Weekly closure times	Voluntary Closures/Buyouts Other
North East Northumbria	Coastal (N)	Drift nets	1.6 - 31.8	1800 Fri to 0600 Mon	Nightly close time 2000 to 0400
		T nets (a)	26.3 - 31.8	1800 Fri to 0600 Mon	Nightly close time 2000 to 0400
	Coastal (S)	Drift nets	1.6 - 31.8	1800 Fri to 0600 Mon	Nightly close time 2000 to 0400
		T nets (a)	26.3 - 31.8	1800 Fri to 0600 Mon	Nightly close time 2000 to 0400
North East Yorkshire	Coastal	Drift nets	1.6 - 31.8	1800 Fri to 0600 Mon	Nightly close time 2000 to 0400
		T or J nets (a)	26.3 - 31.8	2000 Fri to 0600 Mon	
Anglian	Coastal	Drift nets (a)	1.4 - 30.9	0600 Sun to 2400 Mon	
		Other nets (a)	1.4 - 30.9	0600 Sun to 2400 Mon	
Southern	Hants area	Seine nets	15.2 - 31.7	0600 Sat to 0600 Mon	
South West	Avon + Stour	Seine nets	1.6 - 31.7	0600 Sat to 0600 Mon &	Net Fishery is Closed as of 2012 Partial buyback arrangements complete buy out- Exe mitigation group Partial buy out from 2006 Partial buy out from 2006 Buyout - complete season Buyout - complete season Buyout - complete season Buyout - complete season Partial Buyout
	Poole Harbour	Seine net	1.6 - 31.7	2100 - 0500 Wed, Thu, Fri	
	Exe	Seine nets (upper reach)	1.6 - 14.8	0600 Sat to 0600 Mon	
	Exe	Seine nets (lower reach)	1.6 - 14.8	0600 Sat to 0600 Mon	
	Teign	Seine nets (a)	15.3 - 31.7	0600 Sat to 0600 Mon	
	Dart	Seine nets (a)	15.3 - 16.8	0600 Sat to 0600 Mon	
	Camel	Drift nets	1.6 - 31.8	0600 Sat to 0600 Mon	
	Tavy	Seine nets	1.6 - 31.8	0600 Fri to 0600 Mon (2.3 - 31.5)	
	Tamar	Seine nets	1.6 - 31.8	&	
	Lynher	Seine nets	1.6 - 31.8	0600 Sat to 0600 Mon (1.6 - 31.8)	
	Fowey	Seine nets (a)	2.3 - 31.8	0600 Sat to 0600 Mon	
Taw/Torridge	Seine nets	1.6 - 31.7	0600 Fri to 0600 Mon		
Midlands	Severn	Seine nets	1.6 - 31.8	1200 Sat to 0600 Mon	
		Lave nets	1.6 - 31.8	1200 Sat to 0600 Mon	
		Fixed Engines	1.6 - 15.8	no closure period	
Wales	Tywi	Coracle nets (a)	1.3 - 31.7	0600 Sat to 1200 Mon	
		Seine nets	1.3 - 31.7	0600 Sat to 1200 Mon	
	Taf	Wade net	1.6 - 31.7	0600 Sat to 1200 Mon	
		Coracle net (a)	1.3 - 31.7	0600 Sat to 1200 Mon	
	Cleddau	Compass nets	1.6 - 31.8	0600 Sat to 1200 Mon	
		Seine net (a)	1.4 - 31.8	0600 Sat to 1200 Mon	
	Teifi	Seine nets (a)	1.4 - 31.8	0600 Sat to 1200 Mon	
		Coracle nets (a)	1.4 - 31.8	0600 Sat to 1200 Mon	
	Dyfi	Seine nets (a)	1.4 - 31.8	0600 Sat to 0600 Mon	
	Dysynni	Seine net	1.6 - 31.8	0600 Sat to 0600 Mon	
	Mawddach	Seine nets	1.6 - 31.8	0600 Sat to 0600 Mon	
	Corwy	Basket trap	1.6 - 31.8	no closure period	
		Seine nets	1.6 - 31.8	0600 Sat to 0600 Mon	
	Black Rock	Lave net	1.6 - 31.8	2400 Thur to 2400 Sun	
	North West	Ribble	Drift nets	1.6 - 31.8	
Lune		Haaf nets	1.6 - 31.8	0600 Sat to 0600 Mon	
		Drift nets	1.6 - 31.8	0600 Sat to 0600 Mon	
Kent		Lave nets	1.6 - 31.8	0600 Sat to 0600 Mon	
Leven		Lave nets	1.7 - 31.8	0600 Sat to 0600 Mon	
Eden		Coops	1.6 - 31.8	0600 Sat to 0600 Mon	
Solway		Haaf nets	1.6 - 9.9	0600 Sat to 2400 Sun	
(a) Sea trout fisheries exempted from national byelaws. All salmon caught before 1 June to be released alive.					

Section 6

Table 5 Rod Fishing Seasons for Salmon & Sea Trout including method restrictions & bag limits 2013

Environment Agency Region	River	Salmon Season (inclusive dates)	Sea trout Season (inclusive dates)	*Method Restrictions	*Bag limits/Catch and Release etc.
North East	Aln	1.2 - 31.10	3.4 - 31.10		
	Coquet	1.2 - 31.10	3.4 - 31.10		
	Tyne	1.2 - 31.10	3.4 - 31.10		
	Wear	1.2 - 31.10	3.4 - 31.10		
	Tees	1.2 - 31.10	3.4 - 31.10		
	Esk (Yorks.) Ouse (Yorks.)	6.4 - 31.10 6.4 - 31.10	6.4 - 31.10 6.4 - 31.10		
Anglian	Region	1.4 - 28.9	1.4 - 28.9		2 bag limit per day
Thames	Thames	1.4 - 30.9	1.4 - 30.9		2 salmon bag limit a day
Southern	Test	17.1 - 2.10	1.5 - 31.10	Voluntary worm ban throughout season	Catch & Release all season for salmon (local agreement)
	Itchen	17.1 - 2.10	1.5 - 31.10	Voluntary worm ban throughout season	Catch & Release all season for salmon (local agreement)
South West	Avon (Hants.)	1.2 - 31.8	15.4 - 31.10	artificial fly only before 15/5	Fly only and mandatory catch and release during trial extension period
	Piddle	1.3 - 31.8	15.4 - 31.10	artificial fly only before 15/5	
	Frome	1.3 - 31.8	15.4 - 31.10	artificial fly only before 15/5	
	Axe	15.3 - 31.10	15.4 - 31.10	no shrimp, prawn, worm or maggot. Fly only after 31/7 below Axbridge	
	Exe	14.2 - 30.9	15.3 - 30.9	no worm or maggot	
	Teign	1.2 - 30.9	15.3 - 31.10	no worm or maggot before 1/6	
	Dart	1.2 - 30.9	15.3 - 30.9	no worm or maggot. No shrimp/prawn exc. below Staverton Br.	
	Avon (Devon)	15.4 - 30.11	15.4 - 30.9	no worm or maggot	
	Plym	1.4 - 15.12	3.3 - 30.9		
	Tavy	1.3 - 14.10	3.3 - 30.9		
	Tamar	1.3 - 14.10	3.3 - 30.9	no worm, maggot, shrimp or prawn after 31/8	
	Lynher	1.3 - 14.10	3.3 - 30.9		
	Fowey	1.4 - 15.12	1.4 - 30.9		
	Camel	1.4 - 15.12	1.4 - 30.9		
	Taw	1.3 - 30.9	15.3 - 30.9	no shrimp, prawn, worm or maggot. Fly only 1/4 to 31/5	
	Torridge	1.3 - 30.9	15.3 - 30.9	no shrimp, prawn, worm or maggot. Fly only 1/4 to 31/5	
	Lyn	1.2 - 31.10	15.3 - 30.9	no worm or maggot before 1/6	
Yealm	1.4 - 15.12	3.3 - 30.9			
Midlands	Severn	1.2 - 7.10	18.3 - 7.10	no float fishing with lure or bait	
Wales	Wye	3.3 - 17.10 (a)	3.3 - 17.10 (a)	Fly only 1.9 to 17.10. No bait all season	Catch & Release salmon and sea trout 18.10 to 25.10
	Usk	3.3 - 17.10	3.3 - 17.10	Fly only 3.3 - 1.6. Fly and Spin 15.9 - 17.10	
	Taff	20.3 - 17.10	20.3 - 17.10	Fly and Spin 20.3 - 15.4 & 1.10 - 17.10	
	Ogmore	20.3 - 17.10	20.3 - 17.10	Fly and Spin 20.3 - 15.4 & 1.10 - 17.10	
	Afan	20.3 - 17.10	20.3 - 17.10	Fly and Spin 20.3 - 15.4 & 1.10 - 17.10	
	Neath	20.3 - 17.10	20.3 - 17.10	Fly and Spin 20.3 - 15.4 & 1.10 - 17.10	
	Tawe	20.3 - 17.10	20.3 - 17.10	Fly and Spin 20.3 - 15.4 & 7.10 - 17.10	
	Loughor	20.3 - 17.10	20.3 - 17.10	Fly and Spin 20.3 - 15.4 & 7.10 - 17.10	
	Tywi	1.4 - 17.10	1.4 - 17.10	Fly and Spin 7.10 - 17.10	
	Taf	1.4 - 17.10	1.4 - 17.10	Fly and Spin 7.10 - 17.10	
	E+W.Cleddau	1.4 - 17.10	1.4 - 17.10	Fly and Spin 7.10 - 17.10	
	Nevern	1.4 - 17.10	1.4 - 17.10	Fly and Spin 7.10 - 17.10	
	Teifi	1.4 - 17.10	1.4 - 17.10	Fly and Spin 7.10 - 17.10	
	Aeron	1.4 - 17.10	1.4 - 17.10	Fly and Spin 7.10 - 17.10	
	Ystwyth	1.4 - 17.10	1.4 - 17.10	Fly and Spin 7.10 - 17.10	
	Rheidol	1.4 - 17.10	1.4 - 17.10	Fly and Spin 7.10 - 17.10	
	Dyfi	20.3 - 17.10 (some sections to 31.10)	20.3 - 17.10 (some sections to 31.10)	Fly and Spin 20.3 - 15.4 & 7.10 - 31.10	
	Dysynni	20.3 - 17.10	20.3 - 17.10	Fly and Spin 20.3 - 15.4 & 7.10 - 17.10	
	Mawddach	20.3 - 17.10	20.3 - 17.10	Fly and Spin 20.3 - 15.4 & 7.10 - 17.10	
	Arthro	20.3 - 17.10	20.3 - 17.10	Fly and Spin 20.3 - 15.4 & 7.10 - 17.10	
	Dwyrdd	20.3 - 17.10 (some sections to 31.10)	20.3 - 17.10 (some sections to 31.10)	Fly and Spin 20.3 - 15.4 & 7.10 - 31.10	
	Glaslyn	20.3 - 17.10	20.3 - 17.10	Fly and Spin 20.3 - 15.4 & 7.10 - 17.10	
	Dwyfawr	20.3 - 17.10	20.3 - 17.10	Fly and Spin 20.3 - 15.4 & 7.10 - 17.10	
	Llyfni	20.3 - 17.10	20.3 - 17.10	Fly and Spin 20.3 - 15.4 & 7.10 - 17.10	
	Gwyrfai	20.3 - 17.10	20.3 - 17.10	Fly and Spin 20.3 - 15.4 & 7.10 - 17.10	
	Seiont	20.3 - 15.11	20.3 - 15.11	Fly and Spin 20.3 - 15.4 & 7.10 - 15.11	
	Ogwen	20.3 - 17.10 (some sections to 31.10)	20.3 - 17.10 (some sections to 31.10)	Fly and Spin 20.3 - 15.4 & 7.10 - 31.10	
	Corwy	20.3 - 17.10 (some sections to 31.10)	20.3 - 17.10 (some sections to 31.10)	Fly and Spin 20.3 - 15.4 & 7.10 - 31.10	
	Clwyd	20.3 - 17.10	20.3 - 17.10	Fly and Spin 20.3 - 1.6, Fly only 1.10 - 17.10	
	Dee	20.3 - 17.10	20.3 - 17.10	Fly only 20.3 - 14.4, Fly and Spin 15.4 - 17.10	

Section 6

Table 5 (continued)

Rod Fishing Seasons for Salmon & Sea Trout including method restrictions & bag limits 2013

Environment Agency Region	River	Salmon Season (inclusive dates)	Sea trout Season (inclusive dates)	*Method Restrictions	*Bag limits/Catch and Release etc.
North West	Ribble	1.2 - 31.10	1.4 - 30.9		Byelaw (28/02/07) No more than 2 salmon can be killed per season Byelaw (NW-25/11/09) no more than four salmon may be killed during the season. Byelaw (NW-08/05/13) requiring release of all salmon after capture. Byelaw (NW-08/05/13) requiring that any salmon to be retained are tagged immediately with an EA carcass tag. Byelaw (NW-25/07/13) Salmon: 16/6-31/10 daily bag 2,10/9-31/10 C&R (F). Byelaw (NW-13/11/13) Salmon:16/6-14/10 daily bag 2,10/9-14/10 C&R (F),Sea trout:1/4-30/9 daily bag 2,10/9-30/9 C&R(F) Byelaw (NW-15/11/07) Salmon:16/6-31/10 daily bag 2,10/9-31/10 C&R (F). Sea trout:1/4-30/9 daily bag 2,10/9-30/9 C&R (F)
	Wyre	1.2 - 31.10	1.4 - 30.9		
	Lune	1.2 - 31.10	1.4 - 30.9		
	Kent	1.2 - 31.10	1.4 - 30.9		
	Leven	1.2 - 31.10	1.4 - 30.9		
	Crake	1.2 - 31.10	1.4 - 30.9		
	Duddon	1.2 - 31.10	1.4 - 30.9		
	Esk (Cumbrian)	1.2 - 31.10	1.4 - 30.9		
	Irt	1.2 - 31.10	1.4 - 30.9		
	Calder	1.2 - 31.10	1.4 - 30.9		
	Ehen	1.2 - 31.10	1.4 - 30.9		
	Derwent	1.2 - 31.10	1.4 - 30.9		
	Ellen	1.2 - 31.10	1.4 - 30.9		
	Eden	15.1 - 14.10	1.4 - 30.9		
	Esk (Border)	1.2 - 31.10	1.4 - 30.9		
Others	1.2 - 31.10	1.4 - 30.9			
Notes	(a) Season 3.3 to 25.10 Rivers Irton, Ithon and main River Wye upstream of Llanwrthwl Bridge Note: EA Wales - variations apply to Anglesey and Llyn Peninsula (check local byelaws).			* National spring salmon byelaws apply Please always check local byelaws and club rules before fishing.	

Table 6 Main Updates for Rod & Net fisheries in 2013

	Area	
National	England & Wales	Mandatory catch and release still apply to the Rivers Wye, Taff and Ely in Wales and the River Leven in the North West Region.
Regional	North West	New statutory effort controls were imposed on salmon and sea trout for the following rod fisheries in 2013: River Crake rod fishery is now allowed to take a quota of salmon (Currently set at 11 in 2013), providing that any salmon taken are immediately tagged with an EA carcass tag. River Derwent rod fishery is now restricted to taking no more than 2 salmon per day, and required to return all females during October.

Section 6
Table 7

Salmon Net Catches – 2013 Season

Environment Agency Region	River/ Fishery	Fishing Method	No. Lics	Phase Out NLO	Feb	Mar	Apr	May	Jun	Jul	Aug	Sep	Un-Known	Total Number	Total Weight (kg)	Average Weight (kg)	
North East Northumbria	Coastal (N)	Drift nets	12 (a)	X	-	-	-	-	1,642	2,622	2,486	-	0	6,750	24,417	4	
		T nets	25 (a)		-	0	0	0	1,239	4,115	3,049	-	0	8,403	31,458	4	
	Coastal (S)	Drift nets	0	X	-	-	-	-	-	-	-	-	-	0	-	-	
		T nets	1		-	0	0	0	0	0	0	-	-	0	0	0	
	North East Yorkshire	Coastal	Drift nets	1	X	-	-	-	-	63	247	458	-	0	768	2,841	4
T or J nets*			30		-	0	0	0	61	410	251	0	0	722	2,776	4	
	Whole area	Total	69		-	0	0	0	3,005	7,394	6,244	0	0	16,643	61,491	4	
Anglian	Coastal	Drift nets	19	X	-	-	0	0	0	0	0	0	0	0	0	0	
		Other nets (var.)	5	X	-	-	0	0	0	0	0	2	0	0	2	5	2
	Whole area	Total	24		-	-	0	0	0	0	2	0	0	2	5	2	
South East	Solent area	Seine nets	1		-	-	-	-	0	0	-	-	0	0	0	0	
		Total	1		-	-	-	-	0	0	-	-	0	0	0	0	
South West	Avon + Stour**	Seine nets	0		-	-	-	-	0	0	-	-	0	0	0		
	Poole Harbour	Seine net	1		-	-	-	-	0	0	-	-	0	0	0		
	Exe	Seine nets	3		-	-	-	-	18	39	62	-	0	119	352	3	
	Teign	Seine nets	3		-	-	0	1	17	37	-	-	0	55	184	3	
	Dart	Seine nets	3		-	-	0	0	3	7	18	-	0	28	97	3	
	Camel	Drift nets	6		-	-	-	-	13	6	12	-	0	31	119	4	
	Tavy	Seine nets	1		-	-	-	-	-	-	-	-	-	0	0	0	
	Tamar	Seine nets	3		-	-	-	-	-	-	-	-	-	0	0	0	
	Lynher	Seine nets	0		-	-	-	-	-	-	-	-	-	0	0	0	
	Fowey	Seine nets	1		-	-	-	-	-	-	-	-	-	0	0	0	
	Taw/Torridge	Seine nets	3	X	-	-	-	0	10	43	-	-	0	53	160	3	
	Whole area	Total	24		-	0	0	1	61	132	92	-	0	286	912	3	
	Midlands	Severn	Draft net	1	X	-	-	-	-	0	0	5	-	0	5	20	4
			Lave nets	28 (b)	X	-	-	-	-	40	36	17	-	0	93	419	5
Putcher Rank			1		-	-	-	-	26	3	4	-	0	33	190	6	
Whole area		Total	30		-	-	-	-	66	39	26	-	0	131	629	5	
Wales	Wye	Lave nets	8		-	-	-	-	0	0	0	-	0	0	0	0	
	Tywi	Seine nets	3		-	0	0	0	10	16	0	-	0	26	108	4	
		Coracle nets	8		-	0	0	0	29	37	-	-	0	66	257	4	
		River total	11		-	-	-	0	39	53	0	-	0	92	365	4	
	Taf	Wade net	1		-	-	-	-	0	0	-	-	0	0	0	0	
		Coracle net	0		-	-	-	-	0	0	0	-	0	0	0	0	
		River total	1		-	-	-	0	0	0	0	-	0	0	0	0	
	E+W.Cleddau	Compass nets	6		-	-	-	-	0	2	0	0	0	2	8	4	
		Seine net	1		-	-	-	-	0	0	0	-	0	0	0	0	
	Teifi	Seine nets	3		-	-	0	0	3	3	32	-	0	38	142	4	
		Coracle nets	12		-	-	0	1	21	22	13	-	0	57	226	4	
		River total	15		-	-	-	1	24	25	45	-	0	95	368	4	
	Dyfi	Seine nets	2		-	-	0	0	0	1	0	-	0	1	1	1	
		Seine net	1		-	-	-	-	1	0	0	-	0	1	3	3	
	Mawddach	Seine nets	2		-	-	-	-	0	0	0	-	0	0	0	0	
		Seine nets	0		-	-	-	-	0	0	0	-	0	0	0	0	
	Conwy	Basket trap	0		-	-	-	-	0	0	0	-	0	0	0	0	
		Seine nets	3		-	-	-	-	1	8	4	-	0	13	47	4	
		River total	3		-	-	-	0	0	8	4	-	0	13	47	0	
	Dee	Trammel nets	0	X	-	-	-	-	0	0	0	-	0	0	0	0	
		Draft nets	0	X	-	-	-	-	0	0	0	-	0	0	0	0	
		River total	0		-	-	-	0	0	0	0	-	0	0	0	0	
	Whole area	Total	50		-	-	-	1	64	89	49	-	0	204	791	4	
North West	Ribble	Drift nets	4		-	-	-	-	3	17	22	0	0	42	213	5	
		Haaf nets	12		-	-	-	-	4	28	40	0	0	72	247	3	
		Drift nets	7		-	-	-	-	6	70	85	-	0	161	592	4	
		River total	19		-	-	-	-	10	98	125	-	0	233	839	4	
	Kent	Lave nets	4		-	-	-	-	6	8	2	-	0	16	53	3	
		Lave nets	1		-	-	-	-	-	0	1	2	0	3	10	3	
	Eden + Esk (Solway)	Haaf nets	55		-	-	-	0	46	192	299	42	0	579	2,144	4	
		Coop traps	3		-	-	-	-	0	3	1	0	0	4	20	5	
	Whole area	Total	86		-	-	-	-	65	318	450	44	0	877	3,278	4	
	England and Wales			284		-	0	0	2	3,261	7,972	6,863	44	0	18,143	67,106	3.70

Key: (a) Separate licences for drift and T nets were issued for the first time in the northern area in 1993. (b) Figures for half- and full-season lave nets combined.
(X) Denotes that a phase out Net Limitation Order (NLO) is in place.

Notes: - Salmon caught pre 1 June released alive
- A dash is used to denote months that fall entirely within the annual close season.

** Avon/Stour - Net Fishery Effectively Closed from 2012. Poole Harbour - All salmon tagged (GWCT) and released

Section 6
Table 8

Sea Trout Net Catches – 2013 Season

Environment Agency Region	River/Fishery	Fishing Method	No. Lics	Phase Out NLO	Month										Un-known	Total Number	Total Weight (kg)	Average Weight (kg)
					Feb	Mar	Apr	May	Jun	Jul	Aug	Sep	Oct	Nov				
North East Northumbria	Coastal (N)	Drift nets	12 (a)	X	-	-	-	-	1,121	2,768	1,273	-	0	5,162	11,841	2		
		T nets	25 (a)		-	0	0	17	4,727	11,395	4,688	-	0	20,827	34,300	2		
	Coastal (S)	Drift nets	0	X	-	-	-	-	-	-	-	-	-	0	0	0		
		T nets	1		-	0	0	0	0	0	0	-	0	0	0	0		
North East Yorkshire	Coastal	Drift nets	1	X	-	-	-	-	210	228	198	-	0	636	1,546	2		
		T or J nets*	30		-	0	5	125	3,303	7,577	2,557	2	0	13,569	24,878	2		
	Whole area	Total	69		-	0	5	142	9,361	21,968	8,716	2	0	40,194	72,565	2		
Anglian	Coastal	Drift nets	19	X	-	-	7	39	27	60	118	111	0	362	485	1		
		Other nets (var.)	5	X	-	-	0	27	4	11	18	6	0	66	107	2		
		Total	24		-	0	7	66	31	71	136	117	0	428	592	1		
South East	Solent Area	Seine nets	1		-	-	-	-	0	0	-	-	0	0	0	0		
South West	Avon + Stour***	Seine nets	0		-	-	-	-	0	0	-	-	0	0	0	0		
	Poole Harbour**	Seine net	1		-	-	-	-	1	0	-	-	0	1	1	1		
	Exe	Seine nets	3		-	-	-	-	2	1	1	-	0	4	5	1		
	Teign	Seine nets	3 (b)		-	0	2	73	51	28	-	-	0	154	200	1		
	Dart	Seine nets	3 (b)		-	-	0	1	22	9	25	-	0	57	75	1		
	Camel	Drift nets	6		0	0	0	0	0	0	0	0	0	0	0	0		
	Tavy	Seine nets	1		0	0	0	0	0	0	0	0	0	0	0	0		
	Tamar	Seine nets	3		0	0	0	0	0	0	0	0	0	0	0	0		
	Lynher	Seine nets	0		-	-	-	-	0	0	0	-	0	0	0	0		
	Fowey	Seine nets	1 (b)		-	0	0	0	0	0	0	-	0	0	0	0		
	Taw/Torridge	Seine nets	3	X	-	-	-	0	42	41	-	-	0	83	62	1		
	Whole area	Total	24		-	0	2	74	118	79	26	-	0	299	342	1		
	Midlands	Severn	Draft net	1	X	-	-	-	-	0	0	0	-	0	0	0	0	
Lave nets			28 (b)	X	-	-	-	-	0	0	0	-	0	0	0	0		
Putcher rank			1		-	-	-	-	0	0	0	-	0	0	0	0		
Whole area		Total	30		-	-	-	-	0	0	0	-	0	0	0	0		
Wales	Tywi	Seine nets	3 (b)		-	0	31	114	173	39	-	-	0	357	691	2		
		Coracle nets	8 (b)		-	10	168	181	195	95	-	-	0	649	1,588	2		
		River total	11		-	10	199	295	368	134	-	-	0	1,006	2,280	2		
	Taf	Wade net	1		-	-	-	-	0	0	-	-	0	0	0	0		
		Coracle net	0 (b)		-	-	0	0	0	0	-	-	0	0	0	0		
		River total	1		-	-	0	0	0	0	-	-	0	0	0	0		
	E+W.Cleddau	Compass nets	6		-	-	-	-	1	0	1	0	0	2	3	2		
		Seine nets	3 (b)		-	-	0	16	73	11	3	-	0	103	176	2		
	Teifi	Coracle nets	12 (b)		-	-	98	202	277	49	12	-	0	638	1,130	2		
		River total	15		-	-	98	218	350	60	15	-	0	741	1,305	2		
		Seine nets	2 (b)		-	-	2	1	25	30	0	-	0	58	113	2		
	Dyfi	Seine net	1		-	-	-	-	4	3	2	-	0	9	19	2		
	Dysynni	Seine nets	2		-	-	-	-	1	0	0	-	0	1	6	6		
	Mawddach	Seine nets	1		-	-	-	-	10	0	0	-	0	10	14	1		
	Nevern	Seine nets	3		-	-	-	-	5	5	0	-	0	10	13	1		
	Conwy	Sling nets	0	X	-	-	-	-	-	-	-	-	-	-	-	-		
	Dee	Seine nets	0	X	-	-	-	-	-	-	0	-	0	0	0	0		
	Whole area	Total	42		0	10	299	514	764	232	18	0	0	1,837	3,754	2		
North West	Ribble	Drift nets	4		-	-	-	-	3	1	0	0	0	4	15	4		
		Haaf nets	12		-	-	-	0	85	71	4	0	0	160	216	1		
		Drift nets	7		-	-	-	-	27	24	2	-	0	53	103	2		
		River total	19		-	-	-	-	112	95	6	-	0	213	319	1		
	Kent	Lave nets	4		-	-	-	-	0	0	0	-	0	0	0	0		
		Lave nets	1		-	-	-	-	-	1	1	-	0	2	3	2		
	Solway	Haaf nets	55		-	-	-	0	200	189	5	4	0	398	486	1		
	Eden	Coop traps	3		-	-	-	-	0	0	1	-	0	1	2	2		
	Whole area	Total	86		-	-	-	0	315	286	13	4	0	618	824	1		
England and Wales			276	0	0	0	10	313	796	10,589	22,636	8,909	123	0	43,376	78,077	1.80	
<p>Key: (a) Separate licences for drift and T nets were issued for the first time in the northern area in 1993. (b) Sea trout fisheries exempted from national byelaws (X) Denotes that a phase out Net Limitation Order (NLO) is in place.</p> <p>Notes: Both the River Wye and Severn net fisheries are prohibited to catch sea trout as such they are not included in this table A dash denotes months that fall entirely within the annual close season. * Sea Trout caught pre 1 June released alive ** All sea trout tagged (GWCT) and released following capture *** Net Fishery effectively closed from 2012</p>																		

Section 6
Table 9

Salmon Rod Catches (released totals in brackets) – 2013 Season

Environment Agency Region	River	Jan	Feb	Mar	Apr	May	Jun	Jul	Aug	Sep	Oct	Nov	Dec	Un-known	Total Number	
North East	Aln	- -	- -	- -	1 (1)	1 (1)	3 (1)	2 (1)	2 (1)	4 (1)	5 (2)	- -	- -	- -	18 (8)	
	Coquet	- -	1 (1)	- -	12 (12)	27 (27)	28 (11)	31 (10)	38 (13)	91 (46)	259 (190)	- -	- -	2 (0)	489 (310)	
	Esk (Yorks.)	- -	- -	- -	2 (2)	1 (1)	5 (3)	1 (0)	6 (4)	40 (20)	63 (42)	- -	- -	- -	118 (72)	
	Ouse (Yorks.)	- -	- -	- -	12 (12)	17 (17)	8 (6)	3 (3)	- -	- -	2 (2)	- -	- -	- -	19 (18)	61 (58)
	Ure	- -	- -	- -	6 (6)	3 (3)	1 (0)	4 (4)	7 (7)	21 (20)	42 (41)	- -	- -	- -	- -	84 (81)
	Tees	- -	- -	- -	- -	- -	1 (1)	7 (6)	6 (6)	27 (21)	55 (51)	- -	- -	- -	1 (1)	97 (86)
	Tyne	- -	10 (10)	36 (36)	94 (94)	86 (86)	139 (72)	172 (78)	551 (297)	1224 (770)	1529 (1216)	- -	- -	- -	26 (20)	3867 (2679)
	Wear	- -	1 (1)	- -	3 (3)	18 (17)	80 (49)	82 (58)	161 (81)	474 (9)	903 (660)	- -	- -	- -	9 (4)	1731 (882)
	Other NE	- -	- -	- -	- -	- -	- -	- -	- -	- -	- -	- -	- -	- -	4 (4)	4 (4)
Total		0 0	12 (12)	36 (36)	130 (130)	153 (152)	265 (143)	302 (160)	771 (409)	1881 (887)	2858 (2204)	0 (0)	0 (0)	61 (47)	6469 (4180)	
South East	Beaulieu	- -	- -	- -	- -	- -	- -	- -	- -	- -	- -	- -	- -	- -	0 (0)	
	Itchen (a)	- -	- -	1 (1)	- -	6 (6)	14 (14)	29 (28)	30 (27)	30 (29)	- -	- -	- -	- -	110 (105)	
	Test (a)	- -	- -	1 (1)	1 (1)	10 (10)	60 (60)	18 (18)	33 (33)	35 (35)	2 (2)	- -	- -	- -	160 (160)	
	Other Sou	- -	- -	- -	- -	- -	- -	- -	- -	1 (1)	- -	- -	- -	- -	1 (1)	
Total		0 (0)	0 (0)	2 (2)	1 (1)	16 (16)	74 (74)	47 (46)	63 (60)	66 (65)	2 (2)	0 (0)	0 (0)	0 (0)	271 (266)	
South West	Avon (Devon)	- -	- -	- -	- -	- -	- -	- -	- -	- -	4 (2)	6 (4)	- -	- -	10 (6)	
	Avon (Hants.)	- -	2 (2)	2 (2)	9 (9)	24 (24)	25 (25)	3 (3)	5 (5)	- -	1 (1)	- -	- -	- -	71 (71)	
	Axe	- -	- -	- -	- -	- -	1 (1)	- -	- -	1 (1)	6 (6)	- -	- -	- -	8 (8)	
	Brit	- -	- -	- -	- -	- -	- -	- -	- -	- -	- -	- -	- -	- -	0 (0)	
	Camel	- -	- -	- -	- -	- -	3 (0)	3 (1)	6 (2)	41 (33)	45 (32)	56 (44)	22 (17)	- -	176 (129)	
	Dart	- -	- -	- -	- -	3 (3)	5 (3)	2 (2)	12 (7)	9 (8)	7 (6)	- -	- -	- -	38 (29)	
	Erme	- -	- -	- -	- -	- -	- -	1 (1)	2 (1)	1 (0)	2 (2)	- -	- -	- -	6 (4)	
	Exe	- -	- -	3 (3)	7 (7)	4 (4)	6 (5)	7 (2)	18 (7)	56 (37)	21 (21)	- -	- -	- -	3 (3)	125 (89)
	Fal	- -	- -	- -	- -	- -	- -	- -	- -	- -	- -	- -	- -	- -	0 (0)	
	Fowey	- -	- -	- -	1 (1)	1 (1)	5 (3)	5 (4)	4 (2)	12 (2)	28 (22)	27 (16)	8 (8)	3 (3)	94 (62)	
	Frome	- -	- -	- -	- -	2 (2)	18 (18)	10 (10)	14 (14)	24 (24)	11 (11)	- -	- -	- -	79 (79)	
	Lyn	- -	- -	- -	- -	5 (5)	5 (4)	- -	- -	6 (6)	1 (1)	- -	- -	- -	17 (16)	
	Lynher	- -	- -	1 (1)	1 (1)	1 (1)	5 (3)	3 (2)	8 (5)	25 (21)	30 (26)	- -	- -	- -	74 (60)	
	Otter	- -	- -	- -	- -	- -	- -	- -	- -	- -	2 (2)	- -	- -	- -	2 (2)	
	Plym	- -	- -	- -	- -	- -	- -	- -	- -	- -	4 (3)	4 (3)	- -	- -	8 (6)	
	Stour SW	- -	- -	- -	- -	- -	- -	- -	- -	1 (1)	- -	- -	- -	- -	1 (1)	
	Tamar	- -	- -	2 (2)	1 (1)	21 (20)	28 (23)	10 (9)	18 (11)	36 (28)	41 (28)	- -	- -	- -	1 (1)	158 (123)
	Tavy	- -	- -	- -	- -	7 (6)	4 (2)	3 (1)	6 (5)	16 (10)	8 (5)	- -	- -	- -	44 (29)	
	Taw	- -	- -	5 (5)	2 (2)	17 (17)	5 (5)	1 (0)	8 (5)	21 (19)	- -	- -	- -	- -	59 (53)	
	Teign	- -	2 (2)	- -	2 (2)	3 (3)	8 (6)	3 (2)	7 (5)	34 (29)	6 (6)	- -	- -	- -	65 (55)	
Torridge	- -	- -	6 (6)	5 (5)	6 (6)	1 (0)	- -	2 (2)	13 (12)	12 (12)	- -	- -	- -	45 (43)		
Yealm	- -	- -	- -	- -	- -	- -	- -	- -	- -	1 (1)	4 (4)	- -	- -	5 (5)		
Total		0 (0)	4 (4)	19 (19)	28 (28)	94 (92)	119 (98)	51 (37)	110 (71)	296 (231)	229 (186)	93 (67)	30 (25)	7 (7)	1085 (870)	

Section 6
Table 9 (continued)

Salmon Rod Catches (released totals in brackets) – 2013 Season

Environment Agency Region	River	Jan	Feb	Mar	Apr	May	Jun	Jul	Aug	Sep	Oct	Nov	Dec	Un-known	Total Number	
Midlands	Severn	-	-	3 (3)	14 (14)	36 (36)	51 (51)	88 (42)	40 (20)	36 (19)	41 (28)	20 (13)	-	-	2 (1)	331 (227)
	Trent	-	-	-	-	-	-	-	-	-	-	-	-	-	1 (0)	1 (0)
	Total	0 (0)	3 (3)	14 (14)	36 (36)	51 (51)	88 (42)	40 (20)	36 (19)	41 (28)	20 (13)	0 (0)	0 (0)	3 (1)	332 (227)	
Wales	Afan	-	-	-	-	-	-	1 (1)	-	2 (0)	2 (1)	1 (1)	-	-	-	6 (3)
	Arthro	-	-	-	-	-	-	-	-	-	1 (1)	-	-	-	-	1 (1)
	Cleddau (E&W)	-	-	-	-	2 (2)	-	4 (3)	3 (2)	4 (3)	11 (8)	15 (10)	-	-	-	39 (28)
	Clwyd	-	-	-	-	-	-	-	1 (0)	5 (4)	9 (6)	7 (7)	-	-	3 (3)	25 (20)
	Conwy	-	-	-	-	1 (1)	3 (3)	2 (1)	2 (2)	23 (11)	41 (21)	22 (18)	7 (0)	-	3 (3)	104 (60)
	Dee	-	-	-	6 (6)	13 (13)	21 (21)	37 (30)	23 (18)	76 (61)	132 (95)	90 (79)	-	-	-	398 (323)
	Dwyfawr	-	-	-	-	-	-	-	-	-	5 (3)	1 (1)	-	-	-	6 (4)
	Dwryd	-	-	-	-	-	-	-	-	1 (0)	2 (1)	1 (0)	-	-	-	4 (1)
	Dyfi/ Dovey	-	-	-	-	-	2 (2)	1 (1)	1 (0)	15 (5)	7 (2)	11 (9)	-	-	7 (4)	44 (23)
	Dysynni	-	-	-	-	4 (4)	-	-	-	1 (0)	-	-	-	-	-	5 (4)
	Ebbw	-	-	-	-	-	-	-	-	-	-	3 (3)	-	-	-	3 (3)
	Glaslyn	-	-	-	-	2 (2)	6 (6)	13 (6)	11 (6)	7 (1)	6 (4)	2 (0)	-	-	-	47 (25)
	Gwyrfai	-	-	-	-	-	-	-	-	-	1 (1)	1 (0)	-	-	-	2 (1)
	Llyfni	-	-	-	-	-	-	-	-	-	1 (0)	-	-	-	-	1 (0)
	Loughor	-	-	-	-	-	-	2 (1)	3 (2)	8 (3)	4 (2)	1 (0)	-	-	-	18 (8)
	Mawddach	-	-	-	-	-	-	3 (3)	4 (1)	5 (1)	21 (8)	3 (3)	-	-	-	36 (16)
	Neath	-	-	-	-	2 (2)	3 (3)	3 (3)	8 (6)	11 (3)	13 (6)	6 (4)	-	-	-	46 (27)
	Nevern	-	-	-	-	1 (1)	-	2 (1)	1 (1)	6 (1)	10 (7)	13 (9)	-	-	-	33 (20)
	Ogmore	-	-	-	-	-	-	2 (1)	2 (1)	5 (2)	5 (5)	1 (0)	-	-	1 (1)	16 (10)
	Ogwen	-	-	-	-	-	-	1 (0)	1 (1)	8 (1)	13 (2)	12 (4)	-	-	-	35 (8)
	Rheidol	-	-	-	-	-	-	7 (5)	5 (4)	9 (4)	3 (3)	5 (5)	-	-	4 (3)	33 (24)
	Seiont	-	-	-	-	-	-	-	-	1 (1)	3 (1)	4 (1)	-	-	-	8 (3)
	Taf	-	-	-	-	-	1 (1)	1 (0)	2 (0)	9 (0)	22 (7)	15 (7)	-	-	-	50 (15)
	Taff	-	-	1 (1)	-	-	1 (1)	-	1 (1)	11 (11)	11 (11)	16 (16)	-	-	-	41 (41)
	Tawe	-	-	-	-	-	-	4 (1)	8 (2)	13 (3)	26 (12)	21 (7)	-	-	1 (1)	73 (26)
	Teifi	-	-	-	-	4 (4)	19 (18)	24 (17)	13 (8)	55 (25)	138 (77)	84 (50)	2 (2)	-	8 (3)	347 (204)
	Tywi/ Towy	-	-	-	-	9 (9)	10 (10)	20 (9)	27 (7)	148 (63)	158 (83)	57 (41)	-	-	2 (1)	431 (223)
Usk	-	-	-	3 (3)	14 (14)	41 (40)	109 (66)	33 (19)	109 (67)	89 (59)	145 (115)	-	-	-	543 (383)	
Wye (a)	-	-	-	20 (20)	124 (124)	152 (152)	206 (206)	43 (43)	62 (62)	95 (95)	94 (94)	-	-	23 (23)	819 (819)	
Ystwyth	-	-	-	-	-	-	-	-	-	7 (7)	-	-	-	-	7 (7)	
Others	-	-	-	-	-	-	-	-	1 (1)	1 (0)	1 (0)	-	-	-	3 (1)	
Total		0 (0)	0 (0)	30 (30)	176 (176)	259 (257)	442 (355)	192 (124)	594 (333)	836 (528)	631 (484)	9 (2)	0 (0)	52 (42)	3224 (2331)	

Section 6

Table 9(continued)

Salmon Rod Catches (released totals in brackets) – 2013 Season

Environment Agency Region	River	Jan	Feb	Mar	Apr	May	Jun	Jul	Aug	Sep	Oct	Nov	Dec	Un-known	Total Number														
NorthWest	Annas	-	-	-	-	-	-	-	-	-	5	(4)	-	-	5	(4)													
	Bela	-	-	-	-	-	-	-	-	3	(2)	-	-	-	3	(2)													
	Calder	-	-	-	-	-	-	-	8	(4)	11	(6)	13	(8)	-	32	(18)												
	Crake	-	-	-	-	-	-	-	1	(1)	8	(8)	10	(10)	-	19	(19)												
	Derwent	-	-	-	-	7	(7)	3	(2)	8	(4)	119	(60)	237	(135)	172	(148)	2	(0)	548	(356)								
	Duddon	-	-	-	-	-	-	-	1	(1)	2	(0)	21	(12)	26	(20)	-	-	50	(33)									
	Eden	-	4	(3)	19	(19)	33	(33)	58	(57)	30	(18)	31	(16)	120	(48)	230	(156)	107	(92)	2	(1)	634	(443)					
	Ehen	-	-	-	-	-	-	1	(0)	13	(4)	97	(28)	107	(43)	102	(57)	-	-	320	(132)								
	Ellen	-	-	-	-	-	-	-	-	2	(1)	5	(3)	3	(1)	-	-	-	-	10	(5)								
	Esk (Border)	-	1	(1)	2	(2)	1	(1)	1	(1)	4	(2)	30	(9)	105	(29)	132	(89)	124	(99)	-	-	400	(233)					
	Esk (Cumbrian)	-	-	-	-	-	-	-	-	2	(0)	9	(1)	17	(11)	26	(21)	-	-	54	(33)								
	Irt	-	6	(6)	-	-	-	-	1	(1)	17	(9)	44	(21)	40	(31)	-	-	3	(3)	111	(71)							
	Kent	-	-	1	(1)	1	(1)	3	(3)	6	(4)	11	(5)	44	(20)	69	(36)	87	(73)	2	(0)	224	(143)						
	Leven	-	-	-	-	-	1	(1)	-	3	(3)	8	(8)	31	(31)	27	(27)	-	-	70	(70)								
	Lune	-	-	-	-	-	9	(9)	4	(4)	20	(13)	67	(26)	192	(91)	145	(102)	-	-	1	(0)	438	(245)					
	Ribble	-	2	(2)	6	(6)	5	(5)	11	(11)	13	(9)	26	(17)	66	(43)	179	(141)	297	(265)	11	(11)	616	(510)					
	Wyre	-	-	-	-	-	-	-	-	-	1	-	4	(3)	-	-	-	-	-	5	(3)								
	Total	0	(0)	13	(12)	28	(28)	40	(40)	90	(89)	61	(39)	146	(73)	665	(278)	1287	(785)	1183	(957)	0	(0)	0	(0)	21	(15)	3539	(2320)
	Unknown Eng + WIs	-	-	-	-	-	-	-	-	1	(0)	-	-	-	-	-	-	-	-	0	(0)								
	England and Wales	0	(0)	20	(19)	93	(93)	281	(281)	510	(505)	784	(608)	476	(300)	1468	(761)	2526	(1637)	2065	(1642)	102	(69)	30	(25)	83	(65)	14920	10194
Notes:	Reported data from rod licence catch returns only, except where indicated. Totals Includes all fish taken and all fish released. Released fish pre June as recorded on return forms. - Catches from tributaries and from minor rivers with a shared estuary are included under the appropriate main river.																												
Key:	(a) Figure quoted above is data from rod catch returns only. Catch data taken from a source other than rod licence returns, ie owners' returns, general licence returns etc. is not used in this table.																												

Section 6
Table 10

Sea Trout Rod Catches (released totals in brackets) – 2013 Season

Environment Agency Region	River	Jan	Feb	Mar	Apr	May	Jun	Jul	Aug	Sep	Oct	Nov	Dec	Un-known	Total Number															
North East	Aln	-	-	-	-	4	(4)	2	(1)	9	(9)	3	(3)	17	(15)	19	(17)	-	-	-	-	54	(49)							
	Coquet	-	-	-	-	11	(11)	8	(8)	13	(9)	19	(13)	40	(25)	49	(36)	178	(115)	-	-	-	-	322	(217)					
	Esk (Yorks.)	-	-	-	-	4	(4)	2	(1)	21	(7)	19	(12)	34	(16)	114	(71)	173	(122)	-	-	6	(0)	373	(233)					
	Ouse (Yorks.)	-	-	-	-	-	-	2	(2)	2	(2)	14	(12)	2	(1)	-	-	-	-	-	-	9	(9)	29	(26)					
	Ure	-	-	-	-	-	-	8	(7)	4	(4)	2	(2)	2	(1)	2	(1)	7	(7)	-	-	-	-	25	(22)					
	Tees	-	-	-	-	-	-	2	(1)	7	(7)	5	(4)	4	(3)	8	(6)	4	(3)	-	-	-	-	30	(24)					
	Tyne	-	-	1	(1)	3	(3)	3	(3)	21	(19)	48	(36)	146	(102)	437	(251)	415	(264)	306	(217)	-	-	13	(12)	1393	(908)			
	Wear	-	-	-	-	42	(42)	64	(64)	148	(134)	238	(176)	405	(290)	332	(249)	267	(226)	-	-	-	-	27	(19)	1523	(1200)			
	Other	-	-	-	-	-	-	-	-	-	-	-	-	-	-	-	-	2	(2)	-	-	-	-	-	-	2	(2)			
	Total		0	(0)	1	(1)	3	(3)	60	(60)	111	(106)	245	(200)	452	(330)	927	(590)	937	(642)	956	(709)	0	(0)	0	(0)	59	(40)	3751	(2681)
Anglian	Total	0	(0)	0	(0)	4	(2)	1	(0)	5	(4)	3	(3)	0	(0)	0	(0)	0	(0)	0	(0)	0	(0)	-	-	0	(0)	13	(9)	
South East (Formerly Southern and Thames)	Thames	-	-	-	-	-	-	-	-	-	-	-	-	-	-	-	-	-	-	-	-	-	-	-	-	-	-	0	(0)	
	Adur	-	-	-	-	-	-	-	-	-	-	-	-	-	-	-	1	(1)	3	(3)	-	-	-	-	-	-	-	-	4	(4)
	Avon Water	-	-	-	-	-	-	-	-	-	-	-	-	3	(1)	1	(1)	-	-	-	-	-	-	-	-	-	-	-	4	(2)
	Beaulieu	-	-	-	-	-	-	-	-	1	(0)	5	(4)	-	-	-	-	1	(1)	-	-	-	-	-	-	-	-	-	7	(5)
	Itchen	-	-	-	2	(2)	6	(6)	22	(14)	73	(67)	102	(87)	90	(68)	124	(103)	46	(40)	-	-	-	-	-	-	2	(0)	467	(387)
	Lymington	-	-	-	-	-	-	-	6	(6)	2	(1)	1	(1)	-	-	16	(14)	-	-	-	-	-	-	-	-	-	-	25	(22)
	Ouse (Sussex)	-	-	-	-	-	-	1	(0)	6	(4)	11	(6)	8	(8)	21	(16)	6	(6)	2	(2)	-	-	-	-	-	-	-	55	(42)
	Rother (Eastern)	-	-	-	-	-	-	-	-	-	4	(3)	3	(2)	3	(3)	-	-	-	-	-	-	-	-	-	-	-	-	10	(8)
	Rother (Western)	-	-	-	-	-	-	-	4	(3)	7	(7)	4	(3)	-	-	-	-	-	-	-	-	-	-	-	-	-	-	15	(13)
	Test	-	-	2	(2)	29	(29)	12	(12)	31	(29)	26	(17)	39	(32)	71	(64)	79	(70)	11	(11)	-	-	-	-	-	-	2	(2)	302
Others	-	-	-	-	-	-	9	(9)	-	-	1	(1)	9	(7)	6	(5)	-	-	-	-	-	-	-	-	-	-	-	25	(22)	
Total		0	(0)	2	(2)	31	(31)	18	(18)	63	(52)	116	(97)	171	(141)	189	(154)	235	(199)	83	(75)	2	(2)	0	(0)	4	(2)	914	(773)	
South West	Avon (Devon)	-	-	-	-	-	-	9	(6)	13	(11)	18	(11)	35	(25)	52	(40)	12	(12)	10	(10)	-	-	-	-	1	(1)	150	(116)	
	Avon (Hants.)	-	-	-	-	9	(9)	19	(19)	34	(24)	86	(85)	139	(132)	220	(213)	71	(70)	-	-	-	-	-	-	25	(0)	603	(552)	
	Axe	-	-	-	-	12	(6)	32	(21)	42	(23)	49	(34)	89	(71)	101	(88)	53	(50)	-	-	-	-	-	-	1	(1)	379	(294)	
	Brit	-	-	-	-	-	-	-	-	4	(4)	1	(1)	2	(2)	1	(1)	1	(1)	-	-	-	-	-	-	-	-	9	(9)	
	Camel	-	-	-	-	-	-	5	(5)	33	(21)	119	(81)	129	(104)	33	(32)	22	(22)	24	(21)	9	(9)	27	(27)	-	-	401	(322)	
	Dart	-	-	-	-	9	(0)	91	(36)	98	(54)	101	(69)	199	(143)	113	(83)	-	-	-	-	-	-	-	-	-	-	611	(385)	
	Erme	-	-	-	-	-	-	-	-	14	(13)	5	(4)	8	(4)	18	(15)	10	(4)	-	-	-	-	-	-	-	-	55	(40)	
	Exe	-	-	-	(6)	(6)	2	(2)	1	(1)	2	(2)	3	(1)	5	(4)	7	(3)	-	-	-	-	-	-	-	-	-	-	26	(19)
	Fowey	-	-	-	-	16	(12)	76	(45)	98	(58)	272	(163)	250	(179)	56	(55)	62	(61)	34	(34)	6	(6)	41	(35)	-	-	911	(648)	
	Frome	-	-	-	-	2	(1)	48	(46)	49	(45)	77	(61)	104	(87)	130	(110)	108	(84)	-	-	-	-	-	-	-	-	518	(434)	
	Loe	-	-	-	-	-	-	1	(1)	4	(4)	36	(29)	27	(27)	2	(2)	-	-	-	-	-	-	-	-	-	-	70	(63)	
	Lyn	-	-	-	-	-	-	-	-	11	(11)	1	(1)	-	-	7	(7)	-	-	-	-	-	-	-	-	-	-	19	(19)	
	Lynher	-	-	-	-	7	(5)	27	(13)	38	(26)	36	(29)	48	(34)	35	(34)	6	(6)	-	-	-	-	-	-	-	-	197	(147)	
	Otter	-	-	-	-	-	-	4	(3)	9	(9)	7	(3)	46	(45)	25	(22)	2	(1)	-	-	-	-	-	-	20	(20)	113	(103)	
	Piddle	-	-	-	-	1	(1)	-	-	-	-	-	-	-	-	-	-	-	-	-	-	-	-	-	-	-	-	1	(1)	
	Plym	-	-	-	-	5	(1)	2	(0)	33	(18)	42	(38)	45	(30)	30	(25)	5	(5)	10	(10)	-	-	-	-	-	-	172	(127)	
	Stour (SW)	-	-	-	-	4	(4)	4	(3)	4	(3)	18	(18)	28	(28)	25	(25)	-	-	-	-	-	-	-	-	-	-	83	(81)	
	Tamar	-	-	-	-	1	(1)	19	(9)	52	(37)	83	(65)	108	(82)	208	(69)	14	(12)	-	-	-	-	-	-	-	3	(2)	488	(277)
	Tavy	-	-	-	-	1	(1)	26	(10)	39	(19)	88	(60)	107	(81)	52	(44)	12	(12)	-	-	-	-	-	-	4	(4)	329	(231)	
	Taw	-	-	-	-	3	(3)	34	(30)	14	(11)	51	(30)	40	(27)	40	(28)	26	(17)	-	-	-	-	-	-	-	-	208	(146)	
Teign	-	-	-	1	(0)	4	(0)	72	(18)	92	(38)	143	(97)	285	(188)	199	(123)	6	(6)	4	(2)	-	-	-	-	1	(1)	807	(473)	
Torrige	-	-	-	-	3	(3)	16	(15)	72	(64)	35	(30)	8	(7)	35	(32)	-	-	-	-	-	-	-	-	-	2	(2)	171	(153)	
Yealm	-	-	-	-	-	-	-	-	1	(0)	1	(0)	4	(0)	-	-	2	(2)	2	(2)	-	-	-	-	-	-	10	(4)		
Others	-	-	-	-	-	-	18	(15)	4	(3)	10	(8)	11	(7)	4	(1)	1	(0)	-	-	-	-	-	-	-	-	48	(34)		
Total		1	(1)	0	(0)	10	(9)	110	(76)	484	(277)	797	(517)	1271	(915)	1717	(1308)	1379	(1041)	387	(348)	84	(79)	15	(15)	125	(93)	6379	(4678)	
Midlands	Severn	-	-	-	1	(1)	4	(3)	1	(1)	9	(9)	1	(0)	-	-	1	(1)	-	-	-	-	-	-	-	-	-	17	(15)	
	Others	-	-	-	-	-	-	5	(5)	-	-	-	-	-	-	-	-	-	-	-	-	-	-	-	-	-	-	5	(5)	
	Total	0	0	0	(0)	1	(1)	4	(3)	6	(6)	9	(9)	1	(0)	0	(0)	1	(1)	0	(0)	0	(0)	0	(0)	0	(0)	22	(20)	

Section 6
Table 10 (continued)

Sea Trout Rod Catches (released totals in brackets) – 2013 Season

Environment Agency Region	River	Jan	Feb	Mar	Apr	May	Jun	Jul	Aug	Sep	Oct	Nov	Dec	Un-known	Total Number														
Wales	Aeron	-	-	-	-	3	(0)	5	(1)	14	(5)	28	(16)	7	(1)	1	(1)	-	-	2	(2)	60	(26)						
	Afan	-	-	-	-	-	-	5	(5)	23	(11)	13	(9)	19	(10)	5	(2)	-	-	-	-	65	(37)						
	Artro	-	-	-	-	-	-	5	(5)	3	(1)	8	(2)	3	(2)	3	(3)	-	-	-	-	2	(2)	24	(15)				
	Cefni	-	-	-	-	-	-	-	-	-	-	1	(1)	2	(0)	4	(4)	-	-	-	-	-	-	7	(5)				
	Cleddau (E&W)	-	-	-	-	2	(2)	4	(3)	53	(47)	112	(97)	55	(43)	44	(34)	7	(7)	-	-	-	-	277	(233)				
	Clwyd	-	-	-	-	1	(1)	8	(6)	85	(77)	239	(203)	251	(204)	124	(106)	47	(45)	-	-	-	-	4	(4)	759	(646)		
	Conwy	-	-	-	-	-	-	11	(11)	31	(28)	102	(88)	201	(161)	95	(78)	20	(16)	4	(3)	-	-	57	(50)	521	(435)		
	Dee	-	-	-	-	3	(3)	11	(11)	93	(89)	108	(102)	121	(92)	77	(65)	29	(29)	13	(13)	-	-	17	(17)	472	(421)		
	Dwyfawr	-	-	-	-	-	-	1	(1)	23	(15)	126	(107)	303	(254)	364	(290)	14	(7)	-	-	-	-	78	(78)	909	(752)		
	Dwryrd	-	-	-	-	-	-	-	-	-	1	(0)	16	(2)	20	(6)	-	-	-	-	-	-	-	-	-	-	37	(8)	
	Dyfi / Dovey	-	-	-	-	20	(20)	69	(50)	283	(174)	553	(365)	536	(444)	168	(161)	23	(21)	-	-	-	-	188	(167)	1840	(1402)		
	Dysynni	-	-	-	3	(1)	26	(21)	56	(50)	60	(52)	83	(71)	132	(123)	62	(57)	7	(3)	-	-	-	-	-	-	429	(378)	
	Glaslyn	-	-	-	60	(55)	216	(178)	129	(95)	89	(61)	128	(90)	118	(82)	82	(57)	11	(9)	-	-	-	-	30	(28)	863	(655)	
	Gwendraeth Fach	-	-	-	-	-	-	-	-	-	10	(1)	10	(6)	9	(6)	-	-	-	-	-	-	-	-	-	-	29	(13)	
	Gwendraeth Fawr	-	-	-	-	-	-	-	-	2	(0)	5	(5)	-	-	-	-	-	-	-	-	-	-	-	-	-	7	(5)	
	Gwyrfai	-	-	-	-	-	-	-	-	2	(2)	2	(2)	2	(1)	-	-	1	(0)	-	-	-	-	-	-	-	5	(3)	
	Llyfni	-	-	-	-	-	-	2	(2)	10	(10)	46	(41)	34	(20)	5	(1)	-	-	-	-	-	-	-	-	-	-	97	(74)
	Loughor	-	-	-	-	-	-	3	(0)	10	(1)	4	(4)	41	(23)	11	(10)	1	(1)	-	-	-	-	-	-	2	(0)	72	(39)
	Mawddach	-	-	-	-	-	-	5	(4)	50	(31)	183	(152)	158	(125)	77	(58)	2	(2)	-	-	-	-	-	-	-	-	475	(372)
	Neath	-	-	-	5	(5)	8	(8)	33	(29)	50	(41)	138	(100)	121	(98)	115	(109)	41	(38)	-	-	-	-	35	(19)	546	(447)	
	Nevern	-	-	-	-	-	-	18	(6)	60	(28)	95	(38)	127	(66)	25	(11)	13	(4)	-	-	-	-	-	-	7	(0)	345	(153)
	Ogmore	-	-	-	-	4	(4)	9	(7)	57	(51)	36	(30)	66	(56)	72	(67)	18	(17)	1	(1)	-	-	-	-	12	(12)	275	(245)
	Ogwen	-	-	-	-	-	-	1	(0)	3	(0)	24	(13)	99	(64)	17	(4)	6	(5)	-	-	-	-	-	-	-	-	150	(86)
	Rheidol	-	-	-	-	-	-	2	(1)	18	(12)	63	(52)	115	(106)	64	(60)	28	(22)	-	-	-	-	-	-	65	(63)	355	(316)
Rhymney	-	-	-	-	-	-	-	-	1	(1)	1	(1)	3	(3)	1	(1)	-	-	-	-	-	-	-	-	-	-	6	(6)	
Seiont	-	-	-	-	-	-	-	-	5	(5)	16	(7)	7	(0)	5	(3)	2	(2)	-	-	-	-	-	-	-	-	33	(15)	
Taf	-	-	-	-	-	-	6	(3)	1	(0)	6	(0)	18	(7)	12	(7)	2	(2)	-	-	-	-	-	-	-	-	45	(19)	
Taff	-	-	-	1	(1)	-	-	1	(1)	1	(1)	-	-	2	(2)	-	-	3	(3)	-	-	-	-	-	-	-	8	(8)	
Tawe	-	-	-	-	2	(1)	13	(11)	7	(6)	25	(20)	39	(21)	36	(26)	2	(0)	-	-	-	-	-	-	22	(10)	146	(95)	
Teifi	-	-	-	-	11	(7)	149	(102)	278	(200)	326	(237)	346	(228)	261	(236)	83	(77)	-	-	-	-	-	-	39	(24)	1493	(1111)	
Tywi / Towy	-	-	-	-	30	(19)	139	(82)	309	(203)	437	(306)	535	(346)	229	(192)	79	(75)	-	-	-	-	-	-	34	(21)	1792	(1244)	
Usk	-	-	-	-	4	(4)	14	(10)	15	(10)	13	(10)	20	(9)	19	(11)	6	(4)	-	-	-	-	-	-	3	(3)	94	(61)	
Wye	-	-	-	4	(4)	6	(5)	3	(2)	14	(14)	-	-	5	(5)	4	(4)	5	(5)	-	-	-	-	-	-	-	41	(39)	
Ystwyth	-	-	-	-	-	-	2	(1)	7	(7)	10	(6)	22	(12)	5	(5)	4	(3)	-	-	-	-	-	-	-	-	50	(34)	
Others	1	(1)	-	-	-	-	1	(1)	2	(0)	2	(0)	-	-	-	-	2	(0)	-	-	-	-	-	-	-	19	(0)	27	(2)
Total	1	(1)	0	(0)	73	(66)	333	(273)	693	(489)	1627	(1170)	2923	(2163)	3562	(2638)	2036	(1675)	472	(408)	18	(17)	0	(0)	616	(500)	12354	(9400)	
Unknown Eng +WIs	Total	-	-	-	-	-	-	-	-	-	-	-	-	-	-	-	-	-	-	-	-	-	-	-	-	-	0	(0)	

Section 6
Table 10 (continued)

Sea Trout Rod Catches (released totals in brackets) – 2013 Season

Environment Agency Region	River	Jan	Feb	Mar	Apr	May	Jun	Jul	Aug	Sep	Oct	Nov	Dec	Un-known	Total Number
North West	Calder	- -	- -	- -	- -	1 (1)	11 (11)	8 (8)	3 (3)	3 (1)	4 (4)	- -	- -	- -	30 (28)
	Crake	- -	- -	- -	- -	- -	- -	6 (6)	17 (17)	24 (23)	4 (4)	- -	- -	- -	51 (50)
	Derwent	- -	- -	- -	- -	3 (3)	14 (12)	33 (31)	73 (64)	82 (76)	41 (40)	- -	- -	8 (4)	254 (230)
	Duddon	- -	- -	- -	- -	- -	14 (11)	65 (52)	59 (45)	29 (21)	1 (1)	- -	- -	- -	168 (130)
	Eden (NW)	- -	- -	- -	3 (3)	20 (18)	33 (24)	51 (37)	54 (51)	33 (29)	10 (10)	- -	- -	6 (6)	210 (178)
	Ehen	- -	- -	- -	4 (4)	6 (6)	55 (50)	223 (206)	218 (186)	95 (80)	33 (33)	- -	- -	1 (1)	635 (566)
	Ellen	- -	- -	- -	- -	- -	- -	11 (11)	8 (5)	2 (1)	6 (6)	- -	- -	6 (6)	33 (29)
	Esk (Border)	- -	- -	- -	3 (0)	19 (15)	114 (72)	200 (149)	182 (138)	90 (88)	37 (36)	- -	- -	5 (3)	650 (501)
	Esk (Cumbrian)	- -	- -	- -	- -	- -	9 (7)	94 (76)	146 (134)	45 (41)	8 (8)	- -	- -	- -	302 (266)
	Irt	- -	- -	- -	- -	- -	11 (9)	64 (54)	113 (101)	104 (93)	29 (29)	- -	- -	1 (0)	322 (286)
	Kent	- -	- -	- -	7 (4)	5 (4)	71 (55)	137 (111)	159 (128)	105 (91)	20 (20)	- -	- -	23 (20)	527 (433)
	Leven	- -	- -	- -	- -	4 (0)	9 (3)	23 (20)	29 (20)	34 (20)	1 (1)	- -	- -	- -	100 (64)
	Lune	- -	1 (1)	- -	7 (7)	59 (56)	146 (118)	352 (264)	510 (436)	325 (280)	69 (67)	- -	- -	7 (3)	1476 (1232)
	Ribble	- -	1 (1)	9 (9)	12 (9)	31 (27)	128 (111)	268 (225)	399 (344)	214 (194)	77 (76)	- -	- -	14 (13)	1153 (1009)
	Wyre (NW)	- -	- -	- -	- -	11 (10)	1 (1)	21 (21)	8 (6)	28 (25)	6 (6)	- -	- -	- -	75 (69)
	Others	- -	- -	- -	- -	- -	- -	2 (2)	3 (1)	2 (2)	1 (1)	- -	- -	- -	8 (6)
		Total	0 (0)	2 (2)	9 (9)	36 (27)	159 (140)	616 (484)	1558 (1273)	1981 (1679)	1215 (1065)	347 (342)	0 (0)	0 (0)	71 (56)
	Grand Total England and Wales	2 (2)	5 (5)	127 (119)	561 (457)	1516 (1070)	3410 (2477)	6376 (4822)	8376 (6369)	5803 (4623)	2245 (1882)	104 (98)	15 (15)	875 (691)	29427 (22638)

Notes: Reported data from rod licence catch returns only. Totals Includes all fish taken and all fish released.
Catches from tributaries and from minor rivers with a shared estuary are included under the appropriate main river. The catch from remaining rivers in each region is aggregated and recorded under 'others'.

Section 6

Table 11 Rod Caught Salmon & Sea Trout, Average Weight (Kg) - 2013 Season

Environment Agency Region	River	Salmon			Sea trout		
		Total catch	Total est. wt. (kg)	Ave. wt. (kg)	Total catch	Total est. wt. (kg)	Ave. wt. (kg)
North East	Coquet	489	1706	3.49	322	470	1.46
	Esk (Yorks.)	118	454	3.85	373	591	1.59
	Tees	97	432	4.45	30	28	0.93
	Tyne	3867	18012	4.66	1393	2145	1.54
	Wear	1731	7147	4.13	1523	2358	1.55
Southern	Itchen	110	405	3.68	467	403	0.86
	Test	160	791	4.94	302	363	1.20
South West	Avon (Devon)	10	26	2.57	150	110	0.73
	Avon (Hants.)	71	469	6.61	603	331	0.55
	Axe	8	19	2.40	379	332	0.88
	Camel	176	580	3.29	401	215	0.54
	Dart	38	133	3.49	611	538	0.88
	Exe	125	309	2.47	26	17	0.64
	Fowey	94	293	3.11	911	594	0.65
	Frome	79	351	4.44	518	417	0.80
	Lyn	17	44	2.57	19	9	0.49
	Lynher	74	211	2.85	197	130	0.66
	Tamar	158	570	3.61	488	296	0.61
	Tavy	44	157	3.57	329	265	0.81
	Taw	59	209	3.54	208	149	0.72
	Teign	65	237	3.64	807	569	0.71
	Torridge	45	208	4.63	171	105	0.62
Midlands	Severn	331	1813	5.48	17	19	1.10
Wales	Aeron	1	3	3.18	60	36	0.60
	Cleddau	39	123	3.15	277	171	0.62
	Clwyd	25	93	3.70	759	442	0.58
	Conwy	104	340	3.27	521	333	0.64
	Dee	398	1693	4.25	472	285	0.60
	Dyfi / Dovey	44	156	3.55	1840	2073	1.13
	Glaslyn	47	186	3.96	863	507	0.59
	Mawddach	36	132	3.67	475	379	0.80
	Nevern	33	99	2.99	345	273	0.79
	Ogmore	16	49	3.07	275	194	0.71
	Ogwen	35	103	2.96	150	99	0.66
	Rheidol	33	99	3.01	355	255	0.72
	Taf	50	135	2.71	45	50	1.12
	Taff	41	107	2.61	8	7	0.90
	Tawe	73	283	3.87	146	111	0.76
	Teifi	347	1252	3.61	1493	1118	0.75
	Tywi / Towy	431	1525	3.54	1792	1942	1.08
	Usk	543	2489	4.58	94	65	0.69
Wye	819	4644	5.67	41	25	0.62	
North West	Derwent	548	2047	3.74	254	192	0.76
	Eden (NW)	634	2586	4.08	210	122	0.58
	Ehen	320	968	3.02	635	346	0.55
	Ellen	10	30	3.02	33	22	0.66
	Esk (Border)	400	1563	3.91	650	445	0.68
	Esk (Cumbria)	54	179	3.31	302	165	0.55
	Kent	224	671	3.00	527	362	0.69
	Lune	438	1556	3.55	1476	1004	0.68
	Ribble	616	2422	3.93	1153	735	0.64
Notes:	<p>Only those fish with associated weights are included All data taken from rod licence returns including rivers Test, Itchen and Wye Total Weights calculated to nearest whole kg Catches from tributaries and from minor rivers with a shared estuary are included under the appropriate main river.</p>						

Section 6

Table 12

Number of rod caught salmon in weight categories (lb & kg) - 2013 Season

Environment Agency Region	River	0-8 lb (0-3.6 kg)	8-14 lb (3.6-6.4 kg)	14-22 lb (6.4-10 kg)	>22 lb (>10 kg)
North East	Coquet	248	216	24	1
	Esk (Yorkshire)	52	55	11	0
	Tees	28	53	16	0
	Tyne	1136	1905	759	67
	Wear	723	763	227	18
	Others	27	92	42	6
South East	Itchen	66	30	14	0
	Test	53	61	42	4
	Others	0	1	0	0
South West	Avon. Devon	9	1	0	0
	Avon. Hants	6	26	34	5
	Axe	7	1	0	0
	Camel	105	62	9	0
	Dart	22	13	3	0
	Exe	105	17	2	1
	Fowey	63	29	2	0
	Frome	28	36	15	0
	Lyn	14	3	0	0
	Lynher	54	19	1	0
	Tamar	79	67	12	0
	Tavy	19	24	1	0
	Taw	29	28	1	1
	Teign	28	34	3	0
	Torrige	14	24	5	2
Others	18	4	0	0	
Midlands	Severn	38	191	88	14
	Others	0	1	0	0
Wales	Aeron	1	0	0	0
	Cleddau	28	10	1	0
	Clwyd	13	10	2	0
	Conwy	65	36	2	1
	Dee	146	198	52	2
	Dyfi / Dovey	23	18	3	0
	Glaslyn	17	30	0	0
	Mawddach	17	16	3	0
	Nevern	24	9	0	0
	Ogmore	12	3	1	0
	Ogwen	25	9	1	0
	Rheidol	23	10	0	0
	Taf	42	8	0	0
	Taff	33	7	1	0
	Tawe	32	38	3	0
	Teifi	179	150	17	1
	Tywi / Towy	244	155	32	0
	Usk	169	278	85	11
Wye	119	410	246	44	
Others	74	31	4	0	
North West	Derwent	292	204	48	4
	Eden (NW)	271	281	77	5
	Ehen	235	74	11	0
	Ellen	8	2	0	0
	Esk (Border)	187	166	47	0
	Esk (Cumbrian)	34	18	2	0
	Kent	166	53	5	0
	Lune	240	167	30	1
	Ribble	297	243	69	7
	Others	195	84	16	0

Notes: Only those fish with associated weights are included
All data taken from rod licence returns
Catches from tributaries and from minor rivers with a shared estuary are included under the appropriate main river.

Section 6
Table 13

Number of rod caught sea trout in weight categories (lb & kg) - 2013 Season

Environment Agency Region	River	0-1 lb (0-0.45 kg)	1-4 lb (0.45-1.8 kg)	>4 lb (>1.8 kg)
North East	Coquet	47	196	79
	Esk (Yorkshire)	21	257	95
	Tees	16	10	4
	Tyne	273	772	348
	Wear	386	719	418
	Others	82	41	3
South East	Beaulieu	5	0	2
	Itchen	215	217	35
	Lymington	9	16	0
	Ouse (Sussex)	6	15	34
	Test	92	157	53
	Others	28	17	13
South West	Avon. Devon	85	58	7
	Avon. Hants	472	121	10
	Axe	209	150	20
	Camel	299	97	5
	Dart	297	271	43
	Exe	15	10	1
	Fowey	616	269	26
	Frome	296	180	42
	Lyn	17	2	0
	Lynher	125	68	4
	Tamar	337	142	9
	Tavy	146	168	15
	Taw	124	73	11
	Teign	446	337	24
	Torridge	123	42	6
Others	354	188	19	
Midlands	Severn	8	7	2
	Others	5	0	0
Wales	Aeron	38	20	2
	Cleddau	186	83	8
	Clwyd	551	189	19
	Conwy	354	154	13
	Dee	284	173	15
	Dyfi / Dovey	828	738	274
	Glaslyn	673	169	21
	Mawddach	293	149	33
	Nevern	146	177	22
	Ogmore	201	59	15
	Ogwen	91	55	4
	Rheidol	232	107	16
	Taf	17	21	7
	Taff	2	6	0
	Tawe	114	19	13
	Teifi	931	470	92
	Tywi / Towy	843	657	292
	Usk	59	32	3
Wye	25	15	1	
Others	1802	413	128	
North West	Derwent	140	103	11
	Eden (NW)	152	54	4
	Ehen	503	120	12
	Ellen	23	9	1
	Esk (Border)	372	266	12
	Esk (Cumbrian)	252	42	8
	Kent	347	157	23
	Lune	929	473	74
	Ribble	772	352	29
	Others	635	111	8

Notes: Only those fish with associated weights are included
All data taken from rod licence returns.
Catches from tributaries and from minor rivers with a shared estuary are included under the appropriate main river.

Section 6
Table 14

Summary of salmon net catches, 2003- 2013

Environment Agency Region	River/ Fishery	Fishing Method	2003	2004	2005	2006	2007	2008	2009	2010	2011	2012	2013	
North East Northumbria	Coastal (N)	Drift nets	5134	5323	5243	3887	4423	3111	2294	11,544	14,011	3,015	6,750	
		T nets	4480	4461	3129	3250	1839	2154	2605	7,462	8,761	3,443	8,403	
	Coastal (S)	Drift nets	0	0	0	0	0	0	0	0	0	0	0	
		T nets	47	32	16	23	106	84	34	49	0	0	0	
North East Yorkshire	Coastal	Drift nets	377	598	364	153	471	538	296	670	904	556	768	
		T or J nets	397	603	235	253	252	354	166	257	538	262	722	
	Whole area	Total	10,435	11,017	8,987	7,566	7,091	6,241	5,395	19,982	24,214	7,276	16,643	
Anglian	Coastal	Drift nets	20	53	12	10	4	9	3	1	5	0	0	
		Other nets (var.)	4	0	3	5	3	0	0	0	0	2	2	
	Whole area	Total	24	53	15	15	7	9	3	1	5	2	2	
Southern	Hants area	Seine nets	0	0	0	0	0	0	0	0	0	0	0	
		Itchen	0	0	0	0	0	0	0	0	0	0	0	
	Whole area	Total	0	0	0	0	0	0	0	0	0	0	0	
South West	Avon + Stour	Seine nets	66	108	56	57	55	268	58	41	39	0	0	
		Poole Harbour	18	5	6	8	2	8	4	2	1	1	0	
	Parrett	Dip nets	0	0	0	0	0	0	0	0	0	0	0	
		Putcher ranks	0	0	0	0	0	0	0	0	0	0	0	
		River total	0	0	0	0	0	0	0	0	0	0	0	
	Exe	Seine nets	277	414	287	189	102	137	92	121	143	97	119	
	Teign	Seine nets	265	250	84	111	18	103	66	119	74	75	55	
	Dart	Seine nets	197	296	63	47	15	54	42	69	16	11	28	
	Avon	Fixed Engine	0	0	0	0	0	0	0	0	0	0	0	
	Camel	Drift nets	83	14	7	0	0	0	6	15	38	27	31	
	Tavy	Seine nets	13	0	0	0	0	0	0	0	0	0	0	
	Tamar	Seine nets	219	0	0	0	0	0	0	0	0	0	0	
	Tavy/Tamar (b)	Seine net							0	0	0	0	0	
	Lynher	Seine nets	29	0	0	0	0	0	0	0	0	0	0	
	Fowey	Seine nets	1	3	4	0	0	0	0	0	0	0	0	
	Taw/Torridge	Seine nets	276	205	65	65	19	17	17	139	52	47	53	
	Lyn	Fixed Engine	0	0	0	0	0	0	0	0	0	0	0	
		Whole area	Total	1444	1295	572	477	211	587	285	506	363	258	286
	Midlands	Severn	Seine nets	38	43	25	13	0	0	2	0	3	0	5
			Lave nets	295	380	135	138	68	100	115	110	154	82	93
Fixed Engines (a)			1207	346	778	713	608	771	766	128	14	128	33	
		Whole area	Total (a)	1540	769	938	864	676	871	883	238	171	210	131
Wales	Wye	Lave nets	6	8	7	6	6	4	6	7	6	7	0	
		Drift nets	0	0	0	0	0	0	0	0	0	0	0	
	Usk	Putcher rank	0	0	0	0	0	0	0	0	0	0	0	
		River total	0	0	0	0	0	0	0	0	0	0	7	0
	Tywi	Seine nets	32	71	26	20	16	16	8	20	29	30	26	
		Coracle nets	41	35	20	25	16	29	40	40	57	21	66	
		River total	73	106	46	45	32	45	48	60	86	51	92	
	Taf	Wade net	0	0	0	0	0	0	0	0	0	0	0	
		Coracle net	0	1	1	0	0	0	0	0	0	0	0	
		River total	0	1	1	0	0	0	0	0	0	0	0	0
	S.W.Coastal	Wade nets	0	0	0	0	0	0	0	0	0	0	0	
		Seine nets	0	0	0	0	0	0	0	0	0	0	0	
		River total	0	0	0	0	0	0	0	0	0	0	0	0
	E+W.Cleddau	Compass nets	27	25	9	11	8	3	1	13	14	2	2	
		Seine net	0	0	0	0	0	0	0	0	0	0	0	
	NeVERN	Seine nets	4	1	103	85	1	41	13	56	39	0	38	
	Teifi	Coracle nets	88	51	85	45	15	24	17	78	69	30	57	
		River total	92	52	188	130	16	65	31	134	108	30	95	
	Dyfi	Seine nets	1	0	8	0	2	0	0	2	0	0	1	
	Dysynni	Seine net	15	5	5	0	0	0	0	0	0	0	1	
	Mawddach	Seine nets	0	0	1	2	0	0	0	0	2	0	0	
	Glaslyn	Seine nets	0	0	0	0	0	0	0	0	0	0	0	
	Dwyfawr	Seine nets	0	0	0	0	0	0	0	0	0	0	0	
	N. Caernarfon	Seine nets	0	0	0	0	0	0	0	0	0	0	0	
	Seiont/Gwyrfai	Seine nets	0	0	0	0	0	0	0	0	0	0	0	
	Ogwen	Seine nets	0	0	0	0	0	0	0	0	0	0	0	
	Conwy	Basket trap	0	0	0	0	0	0	0	0	0	0	0	
		Seine nets	37	28	46	18	11	0	8	7	14	16	13	
		River total	0	28	46	18	11	0	8	7	14	16	13	
	Clwyd	Sling nets	0	0	0	0	0	0	0	0	0	0	0	
		Trammel nets	365	331	303	291	471	0	0	0	0	0	0	
		Seine nets	359	414	507	176	67	43	0	0	0	0	0	
	Dee	River total	724	745	810	467	538	43	0	0	0	0	0	
		Whole area	Total	975	970	1121	679	613	160	93	223	228	106	204
	North West	Ribble	Drift nets	155	295	250	119	266	64	165	95	98	53	42
			Haaf nets	369	185	662	418	256	86	117	243	125	55	72
			Drift nets	400	473	1350	686	486	238	129	211	153	102	161
			Seine net	41	31	59	40	18	17	0	0	0	0	0
			River total	810	689	2071	1144	760	341	411	454	278	157	233
		Kent	Lave nets	40	8	90	63	4	0	25	26	12	6	16
Lave nets			3	5	15	19	4	1	3	2	0	1	3	
S&W Cumbria area		Drift nets + var. nets	98	0	0	0	0	0	0	0	0	0	0	
Eden + Esk area		Haaf nets + var. nets	1695	1480	2752	2632	1290	575	407	1088	527	360	583	
		Whole area	Total	2801	2477	5178	3977	2324	981	846	1665	915	577	877
England and Wales			17219	16581	16811	13578	10922	8849	7505	22615	25896	8429	18143	

(a) 1993 Midlands fixed engine, Midlands total and total England/Wales net catch amended from earlier reports
(b) Catches included under Tavy and Tamar as appropriate

N = North
S = South

Section 6
Table 15

Summary of sea trout net catches, 2003-2013

Environment Agency Region	River/Fishery	Fishing Method	2003	2004	2005	2006	2007	2008	2009	2010	2011	2012	2013	
North East Northumbria	Coastal (N)	Drift nets	2,433	2,041	1,880	2,731	2,545	2,578	2,828	9,710	3,701	3,425	5,162	
		T nets	10,396	8,462	7,373	9,899	6,026	9,800	11,579	29,436	14,137	9,472	20,827	
	Coastal (S)	Drift nets	0	0	0	0	0	0	0	0	0	0	0	
		T nets	123	33	49	92	127	241	159	323	1	0	0	
	North East Yorkshire	Coastal	Drift nets	278	339	294	258	545	996	662	961	620	789	636
T or J nets			8,541	8,867	9,177	9,512	8,323	11,250	11,729	15,116	10,178	8,290	13,569	
Total			21,771	19,742	18,773	22,492	17,566	24,865	26,957	55,546	28,637	21,976	40,194	
Anglian	Coastal	Drift nets	2,021	1,772	862	708	651	509	550	415	417	356	362	
		Other nets (var.)	455	281	252	205	201	205	138	56	71	45	66	
	Whole area	Total	2,476	2,053	1,114	913	852	714	688	471	488	401	428	
Southern	Hants area	Seine nets	14	7	2	0	2	0	0	1	9	0	0	
		Seine nets	0	0	0	0	0	0	0	0	0	0	0	
	Whole area	Total	14	7	2	0	2	0	0	1	9	0	0	
South West	Avon + Stour	Seine nets	449	646	177	242	337	268	257	213	198*	0	0	
		Seine net	17	7	15	13	8	8	8	11	1	6	1	
	Poole Harbour	Dip nets	0	0	0	0	0	0	0	0	0	0	0	
		Putcher ranks	0	0	0	0	0	0	0	0	0	0	0	
	Parrett	River total	0	0	0	0	0	0	0	0	0	0	0	
		Seine nets	8	5	6	9	10	20	4	1	3	1	4	
	Exe	Seine nets	321	315	207	218	117	191	182	188	200	138	154	
		Seine nets	564	451	538	75	67	107	160	196	63	32	57	
	Dart	Fixed Engine	0	0	0	0	0	0	0	0	0	0	0	
		Drift nets	21	1	0	0	0	0	0	1	3	1	0	
	Avon	Seine nets	32	0	0	0	0	0	0	0	0	0	0	
		Seine nets	44	0	0	0	0	0	0	0	0	0	0	
	Camel	Seine net	0	0	0	0	0	0	0	0	0	0	0	
		Seine nets	1	0	0	0	0	0	0	0	0	0	0	
	Fowey	Seine nets	1	1	0	0	0	0	0	0	0	0	0	
		Seine nets	340	151	128	65	43	100	77	93	107	98	83	
	Lyn	Fixed Engine	0	0	0	0	0	0	0	0	0	0	0	
		Whole area	Total	1,798	1,577	1,071	622	582	694	688	703	377	276	299
	Midlands	Severn	Seine nets	0	0	0	0	0	0	0	0	0	0	0
			Lave nets	0	0	0	0	0	0	0	1	0	0	0
Fixed Engines			0	0	0	0	0	0	7	0	0	2	0	
Whole area		Total	0	0	0	0	0	7	1	0	2	0		
Wales	Wye	Lave nets	0	0	0	0	0	0	0	0	0	0	0	
		Drift nets	0	0	0	0	0	0	0	0	0	0	0	
		Putcher rank	0	0	0	0	0	0	0	0	0	0	0	
	Tywi	River total	0	0	0	0	0	0	0	0	0	0	0	
		Seine nets	504	567	589	247	400	306	383	311	336	399	357	
		Coracle nets	766	205	324	197	351	367	637	655	594	515	649	
	Taf	River total	1,270	772	913	444	751	673	1,020	966	930	914	1,006	
		Wade net	2	0	2	0	0	1	0	0	0	0	0	
		Coracle net	12	17	17	28	0	0	0	0	0	0	0	
	S.W.Coastal	River total	14	17	19	28	0	1	0	0	0	0	0	
		Wade nets	0	0	0	0	0	0	0	0	0	0	0	
		Seine nets	0	0	0	0	0	0	0	0	0	0	0	
	E+W.Cleddau	River total	0	0	0	0	0	0	0	0	0	0	0	
		Compass nets	11	4	10	2	0	5	1	0	2	0	2	
		Seine net	0	0	0	0	0	0	13	6	0	15	10	
	Teifi	Seine nets	15	13	79	13	38	80	94	222	224	56	103	
		Coracle nets	500	396	263	112	90	194	299	786	696	375	638	
		River total	515	409	342	125	128	274	407	1,008	920	431	741	
	Dyfi	Seine nets	51	16	90	67	33	29	31	75	36	17	58	
		Seine net	45	42	11	4	0	21	20	16	8	8	9	
	Mawddach	Seine nets	0	0	0	1	0	4	0	0	1	0	1	
		Seine nets	0	0	0	0	0	0	0	0	0	0	0	
	Dwyfawr	Seine nets	0	0	0	0	0	0	0	0	0	0	0	
		Seine nets	0	0	0	0	0	0	0	0	0	0	0	
	N. Caernarfon	Seine nets	0	0	0	0	0	0	0	0	0	0	0	
		Seine nets	0	0	0	0	0	0	0	0	0	0	0	
	Ogwen	Seine nets	0	0	0	0	0	0	0	0	0	0	0	
		Basket trap	0	0	0	0	0	0	0	0	0	0	0	
	Corwy	Seine nets	8	10	11	3	6	0	2	3	9	5	10	
		River total	8	10	11	3	6	0	2	3	9	5	10	
Sling nets		0	0	0	0	0	0	0	0	0	0	0		
Dee	Trammel nets	15	15	13	21	16	0	0	0	0	0	0		
	Seine nets	35	52	33	0	2	15	0	0	0	0	0		
	River total	50	67	46	21	18	15	0	0	0	0	0		
Whole area	Total	1,964	1,337	1,442	695	936	1,022	1,480	2,074	1,906	1,390	1,837		
North West	Ribblesdale	Drift nets	11	32	8	10	5	1	13	34	6	2	4	
		Haaf nets	325	491	274	244	125	248	252	677	96	90	160	
		Drift nets	47	79	86	48	20	25	44	76	40	15	53	
		Seine net	22	35	18	4	6	27	0	0	0	0	0	
		River total	405	637	386	306	156	300	296	753	136	105	213	
	Leven	Lave nets	3	0	7	5	4	0	5	6	0	4	0	
		Lave nets	1	1	0	0	0	1	2	0	0	0	2	
	S&W Cumbria area	Drift nets + var. nets	16	0	0	0	0	0	0	0	0	0	0	
		Haaf nets + var. nets	800	701	634	278	253	377	619	640	0	262	399	
	Whole area	Total	1,225	1,339	1,027	589	413	679	935	1,433	142	373	618	
England and Wales	Total	29,248	26,055	23,429	25,311	20,351	27,974	30,755	60,229	31,559	24,418	43,376		

(a) Catches recorded under Tavy and Tamar as appropriate
* Includes Christchurch Harbour

N = North
S = South

Section 6
Table 16

Summary of salmon rod catch, 2003-2013

Environment Agency Region	River	2003	2004 (a)	2005	2006	2007	2008	2009	2010	2011	2012	2013
North East	Aln	55	15	19	9	26	6	28	56	71	22	18
	Coquet	566	1,177	1,108	780	641	842	462	978	757	787	489
	Tyne	2,163	4,122	3,591	3,795	3,091	3,389	3,073	5,115	5,630	4,006	3,867
	Wear	586	1,055	971	823	788	959	716	1,531	1,613	1,151	1,731
	Tees	86	208	107	135	159	267	69	69	92	211	97
	Ouse (Yorks.)	4	1	2	14	3	4	4	12	25	11	61
	Ure	4	5	14	8	15	6	16	13	57	149	84
	Esk (Yorks.)	43	189	111	197	145	159	52	172	128	126	118
	Others	0	16	10	13	4	2	1	1	0	2	4
	Total		3,507	6,788	5,933	5,774	4,872	5,634	4,421	7,947	8,373	6,465
Anglian	Unknown	0	0	0	0	0	0	0	1	0	0	0
South East (Southern and Thames)	Thames	0	0	0	0	0	0	0	2	0	0	0
	Test	167	459	351	210	256	419	185	110	186	121	160
	Itchen	58	150	87	121	210	289	205	252	226	240	110
	Others	0	0	0	0	0	3	1	4	3	3	1
Total		225	609	438	331	466	711	391	366	415	364	271
South West	Avon (Hants.)	109	78	132	134	116	67	76	47	121	62	71
	Piddle	5	8	3	1	1	0	2	1	1	2	0
	Frome	57	60	58	57	69	46	35	43	86	54	79
	Exe	146	594	269	187	340	540	355	404	601	441	125
	Teign	47	194	71	63	87	214	72	81	96	123	65
	Dart	37	156	66	49	75	124	68	90	88	119	38
	Avon (Devon)	35	76	31	59	54	61	20	61	39	30	10
	Plym	7	3	6	26	14	23	5	18	30	14	8
	Tavy	14	69	85	76	68	81	55	128	66	68	44
	Tamar	114	316	131	197	169	358	229	387	239	341	158
	Lynher	28	79	74	56	90	67	77	135	53	80	74
	Fowey	113	164	242	254	114	190	98	305	126	96	94
	Camel	307	389	334	355	369	358	206	546	283	169	176
	Torrifidge	19	89	46	44	56	119	53	69	56	104	45
	Taw	112	317	103	151	345	287	189	178	353	225	59
	Lyn	97	168	56	67	88	117	77	111	129	62	17
	Others	19	39	18	26	16	34	31	24	35	37	22
Total		1,266	2,799	1,725	1,802	2,071	2,686	1,648	2,628	2,402	2,027	1,085
Midlands	Severn	333	319	430	356	280	294	212	234	361	249	331
	Others	0	0	0	0	0	0	1	1	1	0	1
	Total	333	319	430	356	280	294	213	235	362	249	332
Wales	Wye	460	788	683	519	675	1,099	620	348	706	1,034	819
	Usk	305	1,115	772	748	1,158	1,157	491	580	707	1,065	543
	Taff	0	11	15	21	14	21	20	53	102	82	41
	Ogmore	27	107	33	39	54	76	51	106	49	43	16
	Afan	5	10	6	5	3	9	15	18	10	15	6
	Neath	35	73	37	85	53	99	62	76	77	56	46
	Tawe	61	155	164	184	183	195	114	230	109	65	73
	Loughor	8	38	29	10	39	51	30	60	38	20	18
	Tywi	432	795	507	642	737	720	441	917	599	390	431
	Taf	32	178	103	105	64	92	61	223	105	60	50
	E+W.Cleddau	36	51	40	32	72	102	78	75	46	57	39
	Nevern	34	45	27	65	46	38	17	43	22	22	33
	Teifi	333	1,062	472	552	518	571	325	922	577	441	347
	Aeron	0	18	0	2	1	3	2	3	0	10	1
	Ystwyth	1	9	3	5	10	3	5	11	10	9	7
	Rheidol	12	50	38	27	31	62	16	18	31	22	33
	Dyfi	46	160	114	207	159	197	84	168	186	115	44
	Dysyrni	1	5	2	2	2	3	5	4	0	8	5
	Mawddach	101	206	126	118	111	94	51	136	133	107	36
	Artro	0	3	4	7	0	5	2	5	3	1	1
	Dwyrhyd	16	42	17	22	10	21	5	4	8	3	4
	Glaslyn	4	30	9	17	29	43	22	22	29	26	47
	Dwyfawr	7	31	11	14	9	18	4	26	16	10	6
	Llyfni	14	9	2	0	4	1	3	6	3	3	1
	Gwyrfai	0	4	1	0	1	1	1	2	2	3	2
	Seiont	12	99	57	50	35	32	12	41	19	29	8
	Ogwen	43	114	125	52	101	121	71	111	84	78	35
Conwy (a)	147	264	162	157	192	190	144	327	172	141	104	
Ciwyd	35	77	18	31	135	176	79	228	153	99	25	
Dee	421	1,080	812	621	683	885	514	800	778	716	398	
Others	4	23	19	16	7	37	11	10	10	10	5	
Total		2,632	6,652	4,408	4,355	5,136	6,122	3,356	5,573	4,784	4,740	3,224
North West	Ribble	556	1,442	1,094	1,054	1,062	1,372	1,007	1,247	1,059	938	616
	Wyre	3	26	4	5	8	25	13	10	13	11	5
	Lune	823	1,893	1,481	1,163	1,152	1,374	808	1,125	1,100	646	438
	Kent	233	582	567	493	411	539	367	692	405	254	224
	Leven	12	61	65	51	30	38	36	102	122	49	70
	Duddon	8	63	56	69	65	125	50	73	84	57	50
	Esk (Cumbrian)	20	74	107	104	227	90	27	25	60	38	54
	Irt	42	133	131	148	119	119	56	127	130	96	111
	Calder	22	51	31	47	16	53	26	73	57	45	32
	Ehen	115	344	275	274	330	365	237	588	395	248	320
	Derwent	466	1,770	1,386	887	1,458	1,286	812	1,248	978	546	548
	Ellen	3	29	8	2	6	30	13	43	27	16	10
	Eden	808	2,622	2,223	1,634	1,407	1,571	1,362	1,431	1,109	943	634
	Esk (Border)	431	897	978	808	841	1,065	697	1,230	1,068	685	400
	Others	5	35	40	32	19	13	21	60	65	37	27
Total		3,547	10,022	8,446	6,771	7,151	8,065	5,532	8,074	6,672	4,609	3,539
Unknown Region		0	0	0	0	0	0	0	0	0	1	0
England and Wales		11,519	27,336	21,418	19,509	19,984	23,512	15,561	24,826	23,008	18,455	14,920

Figures include all fish caught, not just retained fish
(a) 2004 figure amended from earlier reports

Section 6
Table 17

Summary of sea trout rod catch, 2003 - 2013

Environment Agency Region	River	2003	2004	2005	2006	2007	2008	2009	2010	2011	2012	2013
North East	Aln	182	65	74	87	139	83	104	80	76	52	54
	Coquet	148	557	330	325	254	531	244	530	372	508	322
	Tyne	1,585	2,095	1,724	1,636	1,660	2,036	1,406	2,687	1,663	1,379	1,393
	Wear	1,448	2,143	1,497	1,298	1,356	2,080	1,271	1,911	1,843	1,427	1,523
	Tees	61	143	108	51	50	68	66	39	18	56	30
	Esk (Yorks.)	479	489	376	552	672	493	206	767	446	543	373
	Others	30	43	29	101	41	32	21	7	74	72	56
	Total	3,933	5,535	4,138	4,050	4,172	5,323	3,318	6,021	4,492	4,037	3,751
Anglian	Unknown	0	0	0	0	0	0	3	4	2	10	13
South East (Southern & Thames)	Thames	1	2	0	1	8	0	0	2	2	0	0
	Test	357	216	114	115	89	74	177	177	203	160	302
	Itchen	676	411	147	324	213	242	275	614	583	409	467
	Ouse (Sussex)	101	76	27	41	51	44	29	60	45	77	55
	Others	209	187	157	109	99	135	141	161	151	81	90
Total	1,343	890	445	589	452	495	622	1,012	982	727	914	
South West	Avon (Hants.)	1,412	456	927	237	152	187	1,050	538	262	127	603
	Stour (SW)	77	14	28	30	9	6	13	17	62	50	83
	Piddle	57	27	36	24	68	37	48	16	30	9	1
	Frome	241	211	153	101	118	50	232	234	271	109	518
	Axe	287	204	254	288	295	233	503	417	396	345	379
	Otter	118	53	63	53	49	87	73	91	123	27	113
	Exe	59	41	32	19	32	42	24	24	17	12	26
	Teign	599	616	581	440	530	589	833	801	514	717	807
	Dart	718	574	599	453	334	242	486	519	553	261	611
	Avon (Devon)	661	435	168	417	93	290	36	131	60	80	150
	Erme	48	26	68	53	64	14	60	85	107	95	55
	Yealm	152	71	52	66	28	37	63	63	59	53	10
	Plym	77	60	103	82	74	75	152	241	237	104	172
	Tavy	282	271	426	158	122	285	296	642	480	228	329
	Tamar	515	537	315	215	252	298	608	580	430	365	488
	Lynher	277	142	207	150	139	191	262	338	171	368	197
	Looe	146	123	162	88	68	14	52	131	25	15	70
	Fowey	1,056	844	1,184	772	752	519	1,073	1,174	866	725	911
	Camel	1,498	1,112	1,022	563	441	333	581	903	611	530	401
	TorrIDGE	321	249	181	82	106	219	151	172	202	164	171
	Taw	596	389	562	208	451	570	482	395	602	357	208
	Lyn	56	43	21	26	29	30	39	41	64	39	19
	Others	91	72	147	65	53	5	77	25	74	69	57
Total	9,344	6,570	7,291	4,590	4,259	4,353	7,194	7,578	6,216	4,849	6,379	
Midlands	Severn	12	14	105	14	32	25	55	20	69	18	17
	Others	0	0	0	0	0	0	2	3	10	0	5
	Total	12	14	105	14	32	25	57	23	79	18	22
Wales	Wye	24	36	84	42	39	48	39	25	58	54	41
	Usk	320	238	244	184	129	191	100	119	113	132	94
	Taff	71	62	55	12	45	115	69	54	162	126	8
	Rhymney	28	17	9	11	23	28	26	20	1	4	6
	Ogmore	572	584	784	193	386	418	468	232	586	686	275
	Afan	162	168	153	63	158	161	120	112	142	130	65
	Neath	400	532	393	298	487	317	492	493	444	403	546
	Tawe	272	173	372	153	243	144	242	426	196	139	146
	Loughor	577	369	538	184	277	361	258	247	147	252	72
	Gwendraeth	101	59	56	61	71	62	10	47	62	50	36
	Tywi	4,175	2,587	4,698	2,091	3,271	2,570	2,845	2,770	2,609	2,034	1,792
	Taf	475	204	528	205	280	447	377	295	331	238	45
	E+W Cleddau	738	439	937	227	511	681	499	564	530	356	277
	NeVERN	1,125	606	722	539	415	674	488	755	500	573	345
	Teifi	3,997	3,126	4,342	1,990	1,774	1,746	2,076	2,186	2,981	1,945	1,493
	Aeron	422	396	205	35	306	151	146	126	144	313	60
	Ystwyth	83	276	107	19	376	132	166	185	261	171	50
	Rheidol	961	551	741	744	587	231	238	197	354	428	355
	Dyfi	1,474	1,362	1,439	1,054	1,459	1,215	1,425	2,093	2,646	2,134	1,840
	Dyswynni	688	471	502	284	410	315	420	396	439	371	429
	Mawddach	1,196	1,127	1,024	387	594	325	411	704	858	522	475
	Artro	44	30	29	23	17	24	12	28	34	7	24
	Dwyrhyd	147	70	50	57	48	78	60	26	25	34	37
	Glaslyn	534	567	592	489	682	520	533	826	680	455	863
	Dwyfawr	1,246	347	691	235	455	145	187	557	295	248	909
	Llyfni	518	187	221	108	257	63	85	134	229	133	97
	Gwyrfa	0	4	4	0	9	0	7	5	7	5	3
	Seiont	82	112	29	19	21	28	69	71	119	55	55
	Ogwen	148	130	177	86	170	65	163	287	238	216	150
	Conwy (a)	572	464	489	282	585	434	423	498	482	392	521
	Clwyd	982	1,085	782	490	728	949	880	1,498	968	1,410	759
	Dee	249	265	303	253	276	192	181	493	506	467	472
	Others	120	192	177	67	201	140	91	205	127	97	34
Total	22,503	16,836	21,477	10,885	15,290	12,970	13,556	16,674	17,274	14,580	12,354	
North West	Ribble	1,296	1,294	1,313	683	1,174	826	1,281	1,584	1,838	1,601	1,153
	Wyre	26	66	5	24	30	16	44	59	53	52	75
	Lune	2,268	1,760	1,380	962	1,120	1,068	1,262	1,009	1,090	1,137	1,476
	Kent	426	431	570	294	456	335	469	731	494	534	527
	Leven	70	69	30	32	132	34	51	49	53	55	100
	Duddon	54	143	181	132	159	183	179	188	148	113	168
	Esk (Cumbrian)	88	112	140	93	199	29	39	194	267	230	302
	Irt	95	110	125	29	142	84	113	185	227	278	322
	Calder	10	9	10	2	4	7	16	25	19	21	30
	Ehen	1,113	466	688	516	193	353	179	325	543	542	635
	Derwent	250	384	294	214	212	159	237	317	332	263	254
	Ellen	41	129	69	42	155	35	74	108	41	202	33
	Eden	881	427	705	238	241	186	347	461	303	217	210
	Esk (Border)	1,260	749	1,138	581	933	1,221	1,271	905	1,059	1,199	650
	Others	15	27	43	21	32	5	46	89	50	32	59
Total	7,893	6,176	6,691	3,863	5,182	4,541	5,608	6,229	6,517	6,476	5,994	
Unknown Region		72	77	172	277	3	0	1	0	0	3	0
England and Wales		45,101	36,100	40,319	24,269	29,398	27,707	30,359	37,543	35,564	30,700	29,427

Figures include all fish caught, not just retained fish
(a) 2004 figure amended from earlier reports

Section 6
Table 18

Reported Net Effort data for Salmon & Sea Trout – 2013 Season

Environment Agency Region	River/ Fishery	Fishing Method	No. Lics.	Days available (a)	Allowable effort (b) net days (NE)/tides (other)	Utilised effort		% utilised	Average day (NE)/tide (other) per licence	Catch Salmon	Salmon catch per lic.day (NE)/ tide (other)	Catch Sea trout	Sea trout catch per lic. day (NE)/ tide (other)
						net days	net tides (other)						
						North East Northumbria	Coastal (N)						
		T nets	25 (c)	113	2825	921	1446	33	37	8,403	9.12	20827	22.61
	Coastal (S)	Drift nets	0	66	0	0		0	0	0	0.00	0	0.00
		T nets	1	113	113	0		0	0	0	0.00	0	0.00
North East Yorkshire	Coastal	Drift nets	1	66	66	63	73	95	63	768	12.19	636	10.10
		T or J nets	30	113	3390	1193	1690	35	40	722	0.61	13569	11.37
Anglian	Coastal	Drift nets	19	130	2470	173	175	7	9	0	0.00	362	2.07
		Other nets (var.)	5	130	650	84	117	18	23	2	0.02	66	0.56
South West	Avon + Stour, (Christchurch Harbour)	Seine nets	0	0	0	0	0	0	0	0	0.00	0	0.00
	Poole Harbour	Seine net	1	45	45	24	24	53	24	0	0.00	0	0.00
	Exe	Seine nets	3	55	165	144	145	88	48	119	0.82	4	0.03
	Teign	Seine nets	3	121	363	105	121	33	40	55	0.45	154	1.27
	Dart	Seine nets	3	100	300	88	170	57	57	28	0.16	57	0.34
	Camel	Drift nets	6	66	396	32	32	8	5	31	0.97	0	0.00
	Tavy	Seine nets	1	66	66	0	-	-	-	0	-	0	-
	Tamar	Seine nets	3	66	198	0	-	-	-	0	-	0	-
	Lynher	Seine nets	0	66	0	0	-	-	-	0	-	0	-
	Fowey	Seine nets	1	131	131	0	-	-	-	0	-	0	-
	Taw/Torridge	Seine nets	3	45	135	60	72	53	24	53	0.74	83	1.15
Midlands	Severn	Seine nets	1	66	66	10	8	12	8	5	0.63	0	0.00
		Lave nets	28 (e)	66	1848	402	411	22	15	93	0.23	0	0.00
		Fixed Engines	1 (f)	76	76	24	48	63	48	131	2.73	2	0.04
Wales	Wye	Lave nets	0	66	0	0	0	0	-	0	-	0	-
	Tywi	Seine nets	3	110	330	236	345	105	115	26	0.08	357	1.03
		Coracle nets	8	110	880	256	265	30	33	66	0.25	649	2.45
	Taf	Wade net	1	45	45	7	7	16	7	0	0.00	0	0.00
		Coracle net	0	110	0	0	-	-	-	0	-	0	-
	E+W.Cleddau	Compass nets	6	66	396	75	78	20	13	2	0.03	2	0.03
	Teifi	Seine nets	3	109	327	81	83	25	28	38	0.46	103	1.24
		Coracle nets	12	109	1308	548	549	42	46	57	0.10	638	1.16
	Dyfi	Seine nets	2	109	218	56	56	26	28	1	0.02	58	1.04
	Dysynni	Seine net	1	66	66	10	10	15	10	1	0.10	10	1.00
	Mawddach	Seine nets	2	66	132	50	62	47	31	0	0.00	1	0.02
	Glaslyn	Seine nets	0	66	0	0	0	0	0	0	0.00	0	0.00
	Conwy	Basket trap	0	92	0	0	0	0	0	0	0.00	0	0.00
		Seine nets	3	66	198	45	48	24	16	13	0.27	10	0.21
	Nevern	Seine nets	1	66	66	17	17	26	17	0	0.00	10	0.59
North West (e)	Ribble	Drift nets	4	66	264	56	59	22	15	42	0.71	4	0.07
	Lune	Haaf nets	12	66	792	415	510	64	43	72	0.14	160	0.31
		Drift nets	7	66	462	163	166	36	24	161	0.97	53	0.32
	Kent	Lave nets	4	66	264	71	81	31	20	16	0.20	0	0.00
	Leven	Lave nets	2	44	88	33	50	57	25	3	0.06	2	0.04
Solway	Eden + Esk	Haaf nets	58	73	4234	1768	2020	48	35	579	0.29	398	0.20
	Eden	Coop traps	3	66	198	78	156	79	52	4	0.03	1	0.01

Key: (a) Days available is the total of the open season minus weekly closure periods. Part days included as full days - voluntary closure or buy-outs not taken into account
(b) Allowable effort is number of licences X available days for NE fisheries. Allowable effort for other fisheries is number of licences X available days X 1.4 tides.
(c) Separate licences for drift and T nets were issued for the first time in the northern area in 1993.
(d) Catches included under Tavy and Tamar as appropriate.
(e) Figures for half- and full-season lave nets combined.
(f) Assume all effort utilised
nr = not recorded

Section 6
Table 19

Reported Rod Effort Data for Salmon & Sea Trout – 2013 Season

Environment Agency Region	River	Number of returns with effort data	Number of days fished	Number of days fished per return	(a) Number of salmon and grise recorded	Catch per licence day	(a) Number of sea trout recorded	Catch per licence day	Days to catch a salmonid
North East	Aln	32	511	15.97	18	0.04	54	0.11	7.10
	Coquet	386	4,591	11.89	457	0.10	304	0.07	6.03
	Tyne	2,424	18,644	7.69	3,619	0.19	1,307	0.07	3.78
	Wear	733	10,844	14.79	1,653	0.15	1,413	0.13	3.54
	Tees	194	1,604	8.27	70	0.04	22	0.01	17.43
	Esk (Yorks.)	194	1,547	7.97	114	0.07	360	0.23	3.26
	Ouse (Yorks.)	154	957	6.21	144	0.15	53	0.06	4.86
South East (Formerly Thames and Southern)	Thames	0	0	0.00	0.00	0.00	0.00	0.00	0.00
	Test	221	978	4.43	145	0.15	299	0.31	2.20
	Itchen	188	870	4.63	107	0.12	451	0.52	1.56
	Beaulieu	19	72	3.79	0	0.00	5	0.07	14.40
	Ouse (Sussex)	44	429	9.75	0	0.00	48	0.11	8.94
	Adur	7	20	2.86	0	0.00	4	0.20	5.00
	Lymington	14	158	11.29	0	0.00	25	0.16	6.32
	Great Ouse	0	0	0.00	0	0.00	0	0.00	0.00
South West	Avon (Hants.)	214	1,434	6.70	65	0.05	501	0.35	2.53
	Stour (SW)	10	65	6.50	0	0.00	26	0.40	2.50
	Piddle	4	32	8.00	0	0.00	1	0.03	32.00
	Frome	100	835	8.35	79	0.09	513	0.61	1.41
	Axe	117	737	6.30	8	0.01	99	0.13	6.89
	Otter	22	179	8.14	2	0.01	106	0.59	1.66
	Exe	206	1,534	7.45	119	0.08	180	0.12	5.13
	Teign	128	1,262	9.86	64	0.05	804	0.64	1.45
	Dart	135	1,306	9.67	33	0.03	606	0.46	2.04
	Avon (Devon)	41	383	9.34	10	0.03	147	0.38	2.44
	Erme	16	104	6.50	6	0.06	54	0.52	1.73
	Yealm	12	66	5.50	5	0.08	10	0.15	4.40
	Plym	28	262	9.36	6	0.02	162	0.62	1.56
	Tavy	66	681	10.32	42	0.06	305	0.45	1.96
	Tamar	328	1,687	5.14	148	0.09	456	0.27	2.79
	Lynher	63	866	13.75	74	0.09	193	0.22	3.24
	Looe	6	70	11.67	0	0.00	70	1.00	1.00
	Fowey	237	2,408	10.16	82	0.03	869	0.36	2.53
	Camel	232	2,265	9.76	151	0.07	370	0.16	4.35
	Taw	201	1,392	6.93	58	0.04	208	0.15	5.23
Torrige	137	733	5.35	42	0.06	169	0.23	3.47	
Lyn	28	84	3.00	7	0.08	18	0.21	3.36	
Midlands	Severn	274	3,980	14.53	286	0.07	16	0.00	13.18
Environment Agency Wales	Wye	958	9,417	9.83	716	0.08	31	0.00	12.61
	Usk	547	5,214	9.53	471	0.09	78	0.01	9.50
	Taff	28	272	9.71	41	0.15	8	0.03	5.55
	Rhymney	2	20	10.00	0	0.00	6	0.30	3.33
	Ogmore	77	972	12.62	14	0.01	271	0.28	3.41
	Afan	29	308	10.62	6	0.02	65	0.21	4.34
	Neath	85	1,629	19.16	42	0.03	497	0.31	3.02
	Tawe	88	1,204	13.68	69	0.06	141	0.12	5.73
	Loughor	74	872	11.78	16	0.02	57	0.07	11.95
	Gwendraeth	9	210	23.33	1	0.00	33	0.16	6.18
	Tywi	899	10,275	11.43	379	0.04	1,534	0.15	5.37
	Taf	66	761	11.53	40	0.05	43	0.06	9.17
	E&W Cleddau	110	1,468	13.35	37	0.03	270	0.18	4.78
	Nevern	70	779	11.13	25	0.03	262	0.34	2.71
	Teifi	598	6,941	11.61	267	0.04	1,160	0.17	4.86
	Aeron	31	439	14.16	1	0.00	60	0.14	7.20
	Ystwyth	32	189	5.91	5	0.03	48	0.25	3.57
	Rheidol	54	718	13.30	31	0.04	342	0.48	1.92
	Dyfi	202	1,535	7.60	33	0.02	1,385	0.90	1.08
	Dysynni	61	684	11.21	5	0.01	399	0.58	1.69
	Mawddach	162	1,521	9.39	31	0.02	461	0.30	3.09
	Artro	11	72	6.55	1	0.01	24	0.33	2.88
	Dwyrhyd	13	120	9.23	4	0.03	25	0.21	4.14
	Glaslyn	58	789	13.60	44	0.06	812	1.03	0.92
	Dwyfawr	33	511	15.48	4	0.01	440	0.86	1.15
	Llyfni	20	138	6.90	1	0.01	81	0.59	1.68
	Gwyrfa	11	54	4.91	2	0.04	5	0.09	7.71
	Seiont	46	692	15.04	5	0.01	15	0.02	34.60
	Ogwen	46	612	13.30	32	0.05	150	0.25	3.36
	Conwy	180	1,782	9.90	90	0.05	408	0.23	3.58
Clwyd	181	1,538	8.50	24	0.02	695	0.45	2.14	
Dee	762	7,635	10.02	369	0.05	453	0.06	9.29	
North West	Ribble	981	9,940	10.13	583	0.06	1,074	0.11	6.00
	Wyre	38	262	6.89	5	0.02	75	0.29	3.28
	Lune	821	7,207	8.78	413	0.06	1,346	0.19	4.10
	Kent	279	3,013	10.80	217	0.07	514	0.17	4.12
	Leven	39	377	9.67	47	0.12	97	0.26	2.62
	Duddon	55	404	7.35	44	0.11	166	0.41	1.92
	Esk (Cumbrian)	114	560	4.91	45	0.08	300	0.54	1.62
	It	86	773	8.99	99	0.13	309	0.40	1.89
	Calder	43	325	7.56	22	0.07	20	0.06	7.74
	Ehen	179	3,522	19.68	305	0.09	566	0.16	4.04
	Derwent	450	4,802	10.67	500	0.10	243	0.05	6.46
	Ellen	25	418	16.72	7	0.02	27	0.06	12.29
	Eden	891	10,325	11.59	571	0.06	202	0.02	13.36
Esk (Border)	462	3,855	8.34	370	0.10	630	0.16	3.86	

NOTES: (a) Data is reported for both salmon and sea trout and can not be separated. (a) The table includes only returns upon which the number of days fished were reported. Some returns contained data for two or more rivers.

Section 6
Table 20

Estimated Proportions of Grilse &
Multi- Sea Winter (MSW) Salmon in Declared Rod Catch – 2013 Season

Environment Agency Region	River	Number of grilse	% grilse	Number of MSW	% MSW
North East	Coquet	358	73	131	27
	Tyne	1847	51	1771	49
	Wear	949	68	453	32
Southern	Test	64	61	41	39
	Itchen	34	30	79	70
South West	Frome	36	52	33	48
	Exe	90	81	21	19
	Teign	32	60	21	40
	Dart	22	81	5	19
	Tavy	13	57	10	43
	Tamar	74	56	58	44
	Lynher	6	75	2	25
	Fowey	22	92	2	8
	Camel	65	79	17	21
	Taw	27	51	26	49
	Torridge	18	42	25	58
	Hants Avon	5	7	68	93
	Lyn	0	0	7	100
Midlands	Severn	60	20	239	80
Wales	Wye	127	18	571	82
	Usk	238	43	317	57
	Ogmore	11	85	2	15
	Tawe	39	62	24	38
	Tywi	264	70	114	30
	Taf	35	92	3	8
	E&W Cleddau	24	75	8	25
	Teifi	221	72	87	28
	Dyfi	26	76	8	24
	Mawddach	22	76	7	24
	Ogwen	26	90	3	10
	Conwy	74	81	17	19
	Dee	215	52	201	48
North West	Ribble	394	71	163	29
	Lune	328	74	114	26
	Kent	195	85	35	15
	Leven	44	63	26	37
	Irt	76	88	10	12
	Ehen	256	86	41	14
	Derwent	417	74	147	26
	Eden	333	55	270	45
	Esk (Border)	239	67	116	33
Total		7326	58	5293	42
Notes:	The grilse/MSW split is attributed only to fish with a declared capture date and weight The splitting model uses monthly age-weight data collected from the fish trap on the River Dee, Wales				

Section 6

Table 21

Salmon Stocking – number of eggs, fry, parr and smolts released - 2013

Environment			Unfed	Fed	0+	1+	1+	2+	
Agency Region	River	Tributary	Ova	Fry	Fry	Parr	Parr	Smolts	Smolts
North East	MainTyne	Main river (plus var. tribs.)	0	0	0	15,000	0	0	0
	South Tyne	Main River (plus var. tribs.)	0	0	0	111,993	19,627	0	0
	North Tyne	Main River (tribs + Kielder Burn)	0	0	0	140,570	38,601	0	0
	Rede	Main River (plus var. tribs.)	0	0	0	69,721	27,758	0	0
	Esk (Yorks.)		0	0	0	90,746	0	0	0
	Ouse	Main river (plus var. tribs.)	0	0	0	0	6	0	0
	Total			0	0	0	428,030	85,992	0
South East	Thames	Main River	0	0	0	0	0	0	0
		Kennet	0	0	0	0	0	0	0
		Itchen (Egg box)	0	0	0	0	0	0	0
	Total		0	0	0	0	0	0	0
South West	Lynher		0	0	0	20000	0	0	0
	Axe		0	0	0	0	0	0	0
	Tamar		0	0	0	0	0	0	0
	Haddeo		0	0	0	28000	0	0	0
	Exe	Main river (plus var. tribs.)	0	0	0	4000	0	0	0
	Torridge		0	26,540	0	0	0	0	0
	Camel (plus tribs.)		0	0	0	0	0	0	0
Total		0	26,540	0	0	52,000	0	0	0
Midlands	Severn	Teme	0	0	0	0	0	0	0
		Leadon	0	0	0	0	0	0	0
		Main River	0	0	0	0	0	0	0
	Wye	Lugg	0	0	0	9,000	0	0	0
		Arrow	0	0	0	27,700	0	0	0
		Wye (England)	0	0	0	11,100	0	0	0
	Trent	Dove	0	0	0	160,000	0	0	0
		Dove (River Churnet)	0	0	0	0	0	0	0
		Main River	0	0	0	10,000	0	0	0
Total		0	0	0	217,800	0	0	0	
Wales	Taff		0	0	0	82,000	0	0	0
	Ely		0	0	0	0	0	0	0
	Ebbw		0	0	0	150	0	0	0
	Teifi		0	0	0	77000	0	0	0
	Afan		0	0	0	0	0	0	0
	Taf		0	0	0	3,000	0	0	0
	Wye	Main river	0	0	0	142,225	0	47	0
	Tywi	Main river + Cothi and Gwili	0	0	0	65250	0	0	0
	Eastern Cleddau		0	0	0	13470	0	0	0
	Rheidol		0	0	0	30	0	0	0
	Seiont		0	0	0	12,000	0	0	0
	Conwy	Main river, Lledr + Llugwy	0	0	0	0	0	0	0
	Mawddach	Main river, Eden and Wnion	0	0	0	8,792	0	0	0
	Dee	Main river (plus var. tribs.)	0	0	90,000	1,000	0	0	0
	Total		0	0	90,000	404,917	0	47	0
North West	Ribble	Hodder	0	0	0	20,000	0	0	0
	Lune	Main River (plus var. tribs.)	0	0	0	46,000	0	0	0
	Total		0	0	0	66,000	0	0	0
England and Wales			0	26,540	90,000	1,168,747	85,992	47	0
Notes:	<p>1+ Parr are those stocked out on or after 1st January in the year after they hatched.</p> <p>1+ Smolts are those stocked out on or after 1st January in the 1st year after they hatched.</p> <p>2+ Smolts are those stocked out on or after 1st January in the 2nd year after they hatched.</p>								

Section 6
Table 22

Sea Trout Stocking – number of eggs, fry, parr and smolts released - 2013

Environment			Unfed	Fed	0+	1+	1+	2+	
Agency Region	River	Tributary	Ova	Fry	Fry	Parr	Parr	Smolts	Smolts
North East	Esk (Yorks)		0	0	0	20,000	0	0	0
	Skelton Beck		0	0	0	27,896	0	0	0
	Rede		0	0	0	0	19,562	0	0
	Total		0	0	0	47,896	19,562	0	0
South West	Axe	Main River + Kit Brook	0	0	0	0	0	0	0
	Total		0	0	0	0	0	0	0
Wales	Taff		0	0	0	0	0	0	0
	Ogmore		0	0	0	3,600	0	0	0
	Ebbw		0	0	0	0	0	0	0
	Tywi	Main river + Cothi and Gwili	0	0	0	2,000	0	0	0
	Mawddach	Main river, Eden and Wnion	0	0	0	0	0	0	0
	Dyfi	Main River (plus var. tribs.)	0	0	0	1,500	0	0	0
	Total		0	0	0	7,100	0	0	0
England and Wales			0	0	0	0	7,100	0	0
Notes:	<p>1+ Parr are those stocked out on or after 1st January in the year after they hatched.</p> <p>1+ Smolts are those stocked out on or after 1st January in the 1st year after they hatched.</p> <p>2+ Smolts are those stocked out on or after 1st January in the 2nd year after they hatched.</p>								

7. REFERENCES

ANON, 2013. *Annual Assessment of Salmon Stocks and Fisheries in England and Wales, 2013* (preliminary assessment for ICES, April 2011) Cefas/EA:97 pp. ISBN: 978 0 907545 75 0.

RUSSELL, I.C., IVES, M.J., POTTER, E.C.E., BUCKLEY, A.A. and DUCKETT, L., 1995. *Salmon and migratory trout statistics for England and Wales, 1951-1990*. Fisheries Research Data Report (38):252 pp.

ENVIRONMENT AGENCY, 2012. *Salmonid and Freshwater Fisheries Statistics for England and Wales 2012*.

8. GLOSSARY

Cefas	The Centre for Environment, Fisheries & Aquaculture Science
EIFAC	European Inland Fisheries Advisory Commission
Grilse	Salmon that has spent not more than one winter at sea before maturing, also known as 1 sea winter (1SW) fish
ICES	International Council for the Exploration of the Seas
Migratory trout	Sea trout, referred to as sewin in Wales. Migratory form of trout <u><i>Salmo trutta</i></u> (L.)
MSW	Multi-Sea-Winter; a salmon that has spent two or more winters at sea before maturing
NASCO	North Atlantic Salmon Conservation Organisation
Nets	Instruments other than rod and line (including nets and fixed engines such as cribs, putts, putchers, baulks, fishing weirs and traps as used for the capture of migratory salmonids)
NLO	Net Limitation Order
EA	Environment Agency
NRW	National Resources Wales

**Would you like to find out more about us,
or about your environment?**

Then call us on

03708 506 506 (Mon-Fri 8-6)

Calls to 03 numbers cost the same as calls to standard geographic numbers (i.e. numbers beginning with 01 or 02).

email

enquiries@environment-agency.gov.uk

or visit our website

www.environment-agency.gov.uk

incident hotline 0800 80 70 60 (24hrs)

floodline 0845 988 1188



Environment first: Are you viewing this on screen? Please consider the environment and only print if absolutely necessary.

If you are reading a paper copy, please don't forget to reuse and recycle if possible.