



Salmonid & Freshwater Fisheries Statistics for England & Wales, 2012

Including declared catches for salmon, sea trout, eels, smelt and lamprey by rods, nets
and other instruments

Version 1 November 2013

We are the Environment Agency. We protect and improve the environment and make it a better place for people and wildlife.

We operate at the place where environmental change has its greatest impact on people's lives. We reduce the risks to people and properties from flooding; make sure there is enough water for people and wildlife; protect and improve air, land and water quality and apply the environmental standards within which industry can operate.

Acting to reduce climate change and helping people and wildlife adapt to its consequences are at the heart of all that we do.

We cannot do this alone. We work closely with a wide range of partners including government, business, local authorities, other agencies, civil society groups and the communities we serve.

Published by:

Environment Agency
Horizon house, Deanery Road,
Bristol BS1 5AH
Email: enquiries@environment-agency.gov.uk
www.environment-agency.gov.uk

Further copies of this report are available
from our publications catalogue:
<http://publications.environment-agency.gov.uk>
or our National Customer Contact Centre:
T: 03708 506506

© Environment Agency 2011

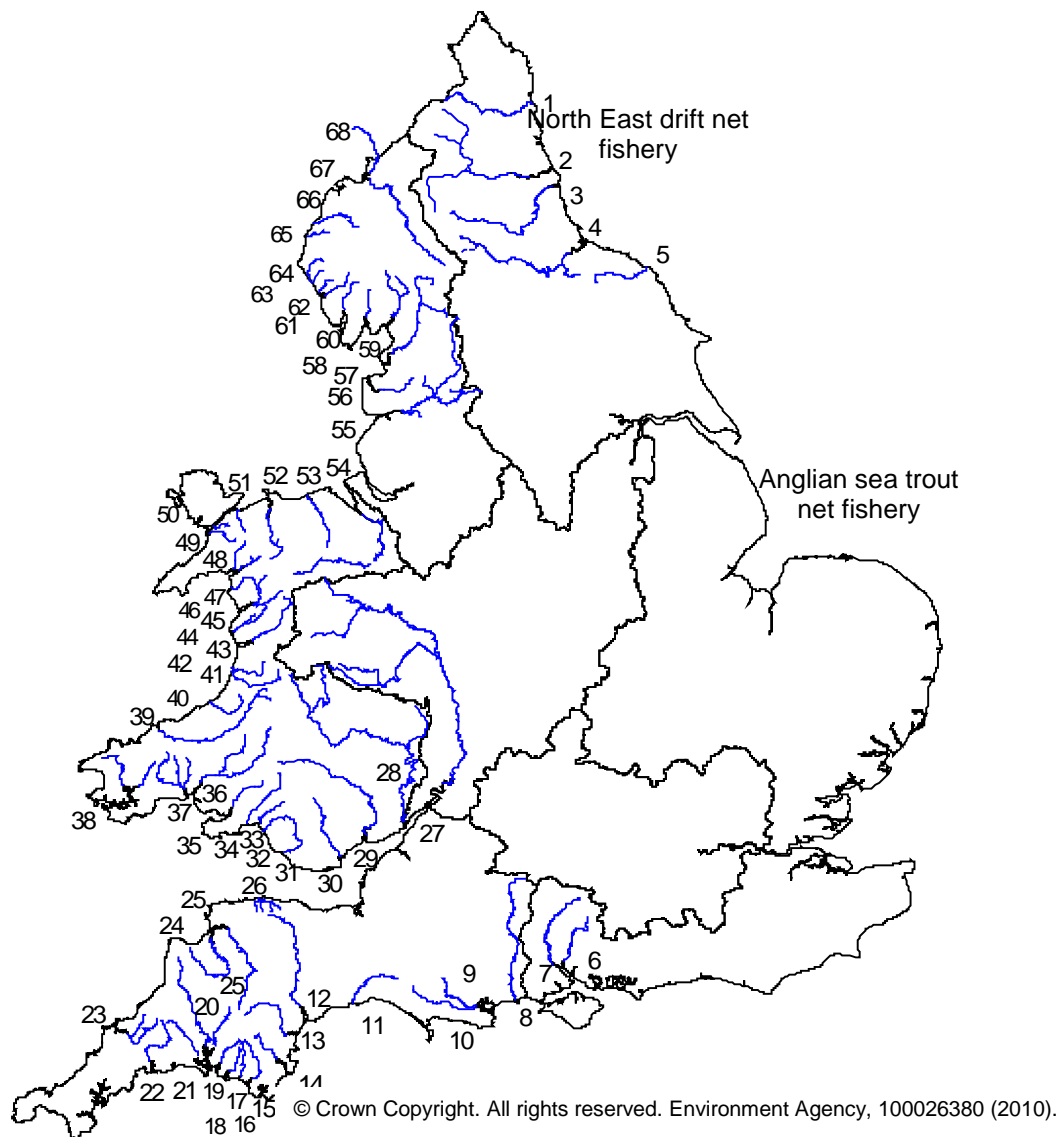
Email: enquiries@environment-agency.gov.uk.

All rights reserved. This document may be reproduced
with prior permission of
the Environment Agency.

Acknowledgements

The Environment Agency would like to take this opportunity to thank all the fishermen who sent us their catch returns last year. Your returns help protect our fish stocks and without them this report would not be possible.

Major salmon and sea trout rivers and fisheries in England and Wales



Key:

North East

- 1 Coquet
- 2 Tyne
- 3 Wear
- 4 Tees
- 5 Esk (Yorks)

Southern

- 6 Itchen
- 7 Test

South West

- 8 Avon (Hants)
- 9 Piddle
- 10 Frome
- 11 Axe
- 12 Exe
- 13 Teign
- 14 Dart
- 15 Avon (Devon)
- 16 Erme
- 17 Yealm
- 18 Plym
- 19 Tavy
- 20 Tamar
- 21 Lynher

Midlands

- 22 Fowey
- 23 Camel
- 24 Torridge
- 25 Taw
- 26 Lyn
- 27 Severn

Wales

- 28 Wye
- 29 Usk
- 30 Taff
- 31 Ogmore

- 32 Afan
- 33 Neath
- 34 Tawe
- 35 Loughor
- 36 Tywi
- 37 Taf
- 38 Cleddau
- 39 Teifi
- 40 Aeron
- 41 Ystwyth
- 42 Rheidol
- 43 Dyfi
- 44 Dysynni
- 45 Mawddach

- 46 Artro
- 47 Dwyrhyd
- 48 Glaslyn
- 49 Gwyrfai
- 50 Seiont
- 51 Ogwen
- 52 Conwy
- 53 Clwyd
- 54 Dee

North West

- 55 Ribble
- 56 Wyre
- 57 Lune
- 58 Kent
- 59 Leven
- 60 Crake
- 61 Duddon
- 62 Esk (Cumbrian)
- 63 Irt
- 64 Ehen
- 65 Derwent
- 66 Ellen
- 67 Eden
- 68 Esk (Border)

Contents

1.	Introduction	6
2.	The Environment Agency and its Regions	6
3.	Rod and net licence catch returns	6
4.	National overview and summary of main findings	7
	Table 1	Summary of declared salmon and sea trout catches England & Wales (2012, 2011 and 5-year mean)
	Table 2	Summary of total salmon and sea trout net and fixed engine catches and weights (2012)
	Table 3	Summary of total salmon and sea trout catches and weights (2012)
	Figure 1	Number of net licences issued (1985-2012) and number of days declared fished by salmon and sea trout rod licence holders (1994-2012), England & Wales
	Figure 2	Total salmon net catches for England & Wales (1956-2012)
	Figure 3	Total salmon rod catches for England & Wales (1956-2012)
	Figure 4	Total sea trout net catches for England & Wales (1978-2012)
	Figure 5	Total sea trout rod catches for England & Wales (1978-2012)
5.	Regional Catch Summaries	12
	Table 4	Summary of salmon net catches by Region (2012, 2011 and 5-year mean)
	Table 5	Summary of sea trout net catches by Region (2012, 2011 and 5-year mean)
	Table 6	Summary of salmon rod catches by Region (2012, 2011 and 5-year mean)
	Table 7	Summary of sea trout rod catches by Region (2012, 2011 and 5-year mean)
	Figure 6	Salmon and sea trout net catches by Region (2012)
	Figure 7	Salmon and sea trout rod catches by Region (2012)
6.	Description of data tables 1 to 21	14
	Data tables 1 to 21	15
7.	References	41
8.	Glossary	41

Section 1

Introduction

This report is the Environment Agency's eighteenth collation of salmon and sea trout catch statistics for England and Wales and the Border Esk in Scotland. From 1989 to 1994, these statistics were published by the National Rivers Authority (NRA). The Ministry of Agriculture, Fisheries and Food, Directorate of Fisheries Research also included them in its Data Report series between 1983 and 1988.

This report is a reference document of declared salmonid catches in England, Wales and Border Esk. It also reports declared catches from other authorised net fisheries in England and Wales the Environment Agency regulates.

Salmon stock assessment data (including provisional catches and run estimates) are published in an

annual assessment for the International Council for the Exploration of the Seas (ICES). The sixteenth report in this series was published jointly by the Environment Agency and the Centre for Environment, Fisheries & Aquaculture Science (Cefas) in April 2013 (www.environment-agency.gov.uk/fishstats).

The catch data recorded here represent declared catches only. This document should not, therefore, be accepted as a definitive record of the total numbers of fish landed. Furthermore, the relationship between catch and stock size is complex, regardless of the accuracy of the catch data. Great care must be taken therefore in interpreting these data.

Section 2

The Environment Agency and its regions

The Environment Agency is a non-departmental public body established by the Environment Act 1995. It has taken over the functions of its predecessors, the National Rivers Authority, Her Majesty's Inspectorate of Pollution, Waste Regulation Authorities and some parts of the Department of the Environment. The Environment Agency came into effect on 1 April 1996.

There are seven Environment Agency Regions: North East & Yorkshire, Anglian, South East (Thames &

Southern combined), South West, Midlands, Environment Agency Wales and North West. The Border Esk in Scotland is regulated by North West region and for the purposes of this report will be included as part of the North West statistics. Throughout this report references to salmon and sea trout fisheries in England and Wales includes the parts of the Border Esk in Scotland.

Section 3

Rod and net licence catch returns

Salmon and sea trout rod licence holders are legally required to submit a full and accurate catch return to the Agency by 1 January in the following year. Commercial net and fixed engine licence holders must submit their returns within 14 days of the end of their respective fishing seasons.

Logbook return compliance was good with only 15% of netsman requiring 2nd reminders. All logbooks were accounted for in 2012

In the 1st week of December 2012, the Environment Agency sent a reminder to all holders of a salmon and sea trout rod licence yet to declare their catch.

The deadline to submit catch returns was 31 December 2012.

A further reminder was sent to 3105 angler by email in March 2013 as a substitute 2nd reminder which yielded 600 more returns. This brought the total returns to 21441.

National overview and summary of main findings

Table 1 Summary of declared salmon and sea trout rod and net catches for England and Wales in 2012 showing % change on 2011 and the 5- year mean (2008- 2012).

	2012	2011	5-yr. mean (2007-2011)	% change (+/-)	
				2012 on 2011	2012 on 5- yr mean 5-yr. mean
RODS					
*Licences issued	35,122	36,983	35,147	-5%	0%
*Days declared fished	167,257	196,902	182,197	-15%	-8%
Salmon caught	18,450	23,008	21,386	-20%	-14%
% Salmon released	65%	62%	58%	5%	12%
(number released)	11,952	14,187	12,391	-16%	-4%
Sea trout caught	30,700	35,564	32,114	-14%	-4%
% Sea trout released	71%	72%	64%	-1%	11%
(number released)	21,841	25,680	20,685	-15%	6%
NETS					
Licences issued	294	308	337	-5%	-9%
Salmon caught	8,451	25,792	15,150	-67%	-44%
Sea trout caught	24,389	31,971	34,241	-24%	-29%

* Salmon and sea trout licences only

RODS SUMMARY

- The number of salmon and sea trout rod licences issued in 2012 (35,122) decreased by 5% compared with 2011 and is comparable with the mean of the previous five years (2007-2011).
- The total declared salmon rod catch in 2012 (18,450) decreased by 20% compared with 2011, with a 14% decrease when compared with the 5-year mean (21,386).
- The declared rod catch of sea trout in 2012 (30,700) decreased by 14% compared with 2011 (35,564) and has decreased by 4% compared with the 5-year mean (32,114).
- Catch-and-release rates for rod caught salmon (65%) and sea trout (71%) in 2012 showed a 3% increase for salmon and a 1% decrease in sea trout on those recorded in 2011.
- 45% of salmon and 45% of sea trout were caught by anglers using a fly in 2012, spinning yielded 42% of salmon and 38% of sea trout with bait capturing 11% of salmon and 14% of sea trout. As in previous years 2% of catches had no method information. Changes of note saw an 11% increase for sea trout caught using a fly and a decrease of 10% of sea trout caught using spinning. All other changes were minor of 5% or less.

- The river with the highest declared rod catch of salmon in 2012 was the Tyne (4,006) followed by the Wear (1,151) the Usk (1,065), the Wye (1,034) and the Eden (943). 22% of the total England and Wales rod catch of salmon was recorded on the Tyne in 2012, this shows a decrease of 2% from 2011.
- The river with the highest declared rod catch of sea trout in 2012 was the Dyfi (2,134) followed by the Tywi (2,034), Teifi (1,945) and the Ribble (1,601). The number of sea trout caught overall in 2012 was almost 5,000 less than in 2011.
- Please note that for salmon on the Wye, Test and Itchen rivers data from catch returns has been used in preference to owners data, as has been used in the past.

NETS SUMMARY

- A total of 294 salmon and sea trout commercial net licences were issued in 2012. This compares with 308 in 2011 and a 5-year mean of 337. Since 1985 there has been a 71% reduction in the number of net licences issued annually in England and Wales (from 1,026 to 294).
- The salmon net catch in 2012 (8,451) decreased significantly by 67% compared with the previous year and by 44% when compared with the 5-year mean (15,150). Whilst most fisheries showed decreases that averaged 48%, the Severn Estuary fishery in Midlands Region showed an increase at 23% (171 to 210 fish). One reason for the fall in catch is believed to be due to the poor weather conditions over the fishing season.
- The average weight of net caught salmon in 2012 was 3.65 kg. This compares with an average weight of 4.4 kg for rod caught salmon.
- Net fisheries exempted from the 'spring' byelaws (that is those targeting sea trout) released all salmon before 1 June. All salmon caught in the South West were released (257 in total).
- A total of 24,389 sea trout were declared caught by the net fisheries in 2012, a decrease of 24% compared with the 2011 catch and a decrease of 29% compared with the 5-year mean.
- The average weight of net and rod caught sea trout in 2009 was 1.8 kg and 0.8kg respectively.

Section 4

Table 2 Summary of total salmon and sea trout net and fixed engine catches and weights, 2012

	Salmon		Sea trout	
	Number	Weight (t.)	Number	Weight (t.)
Caught	8,451	68	24,389	97
Retained	8,394	67	24,377	97
Released	57	0.5	12	0.04

Table 3 Summary of total salmon and sea trout rod catches and weights, 2012

	Salmon		Sea trout	
	Number	Weight (t)*	Number	Weight (t.)
Caught	18,450	81.1	30,700	28.1
Retained	6,498	25.6	8,859	8.1
Released	11,952	55.5	21,841	20

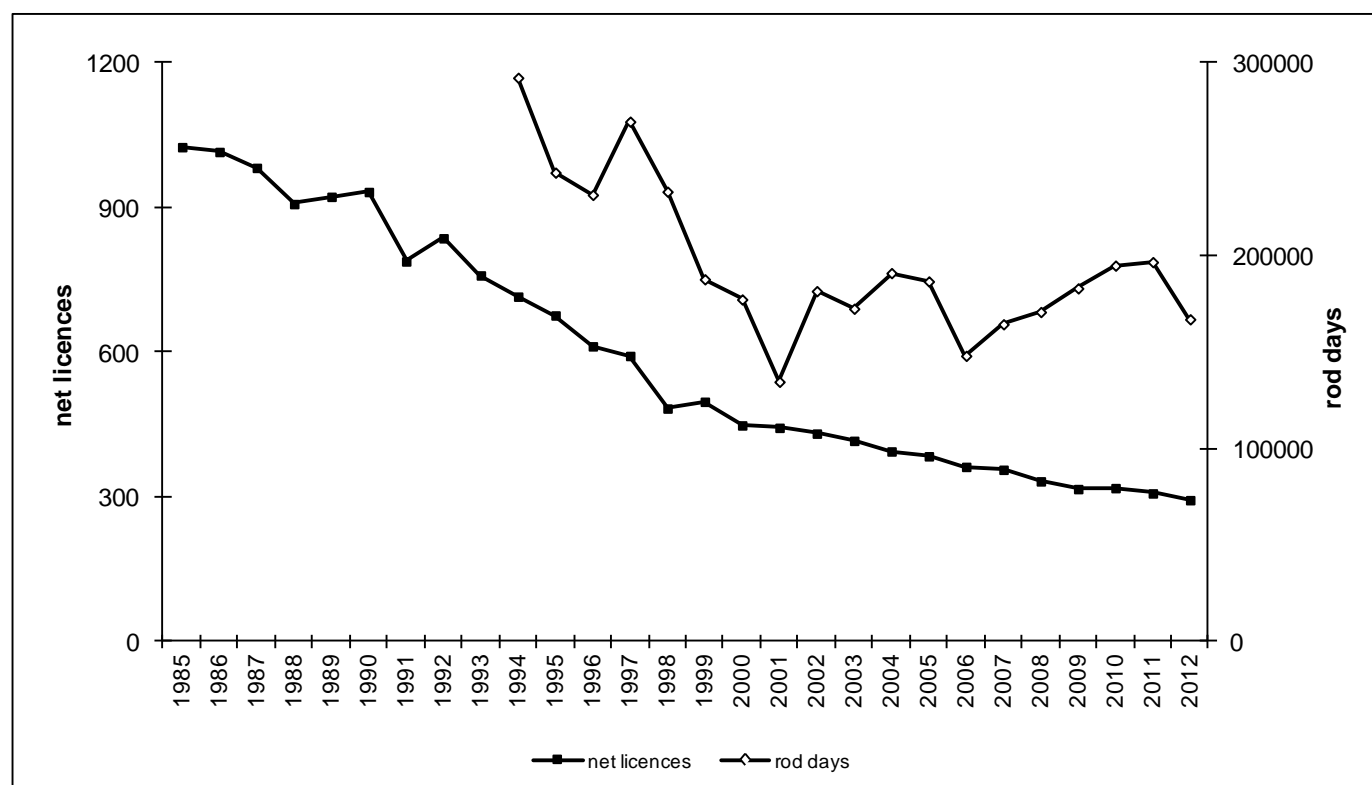


Figure 1 Number of net and fixed engine licences issued (1985-2012) and total number of days fished by salmon and sea trout rod licence holders (1994-2012), England & Wales.

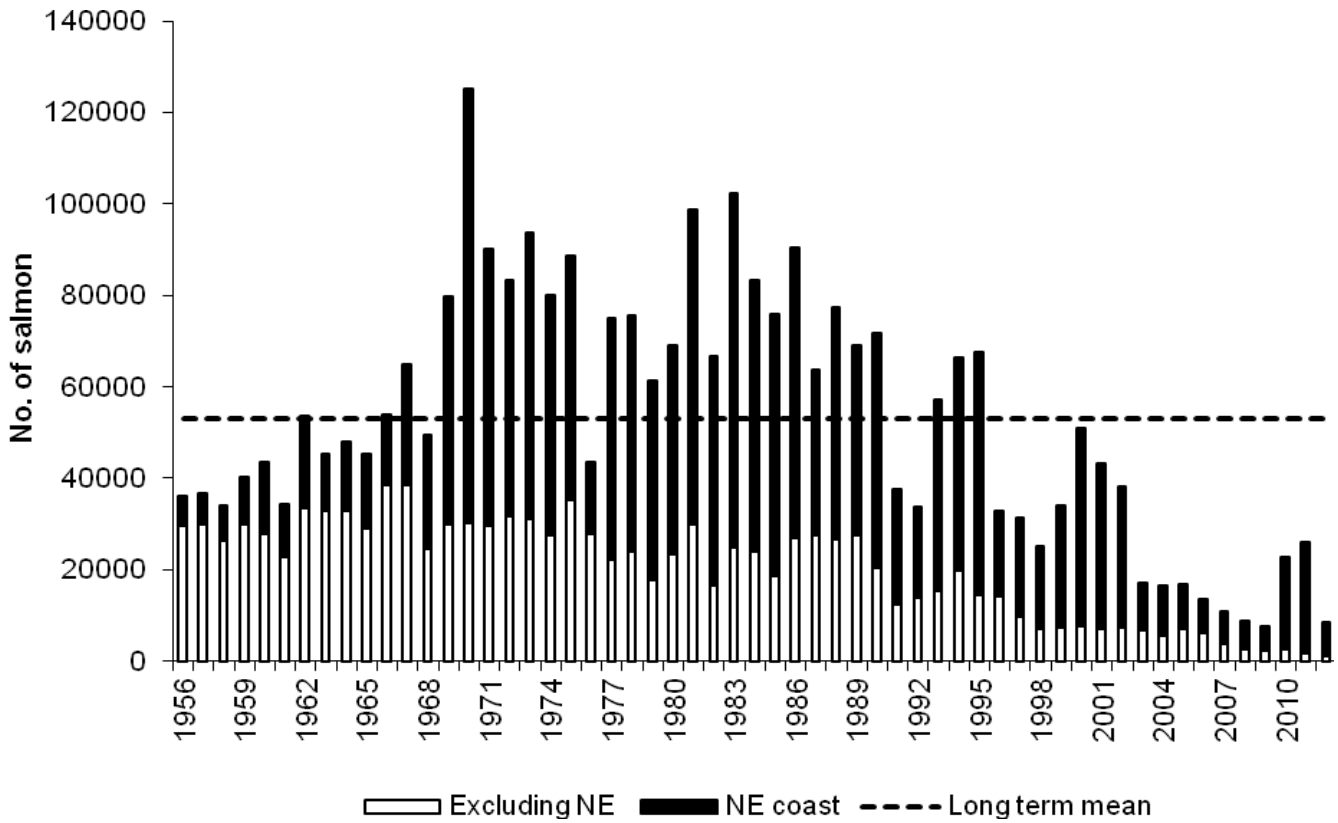


Figure 2 Total declared salmon net and fixed engine catch for England & Wales, 1956-2012 (shaded area indicates the catch for the North East Coast fishery).

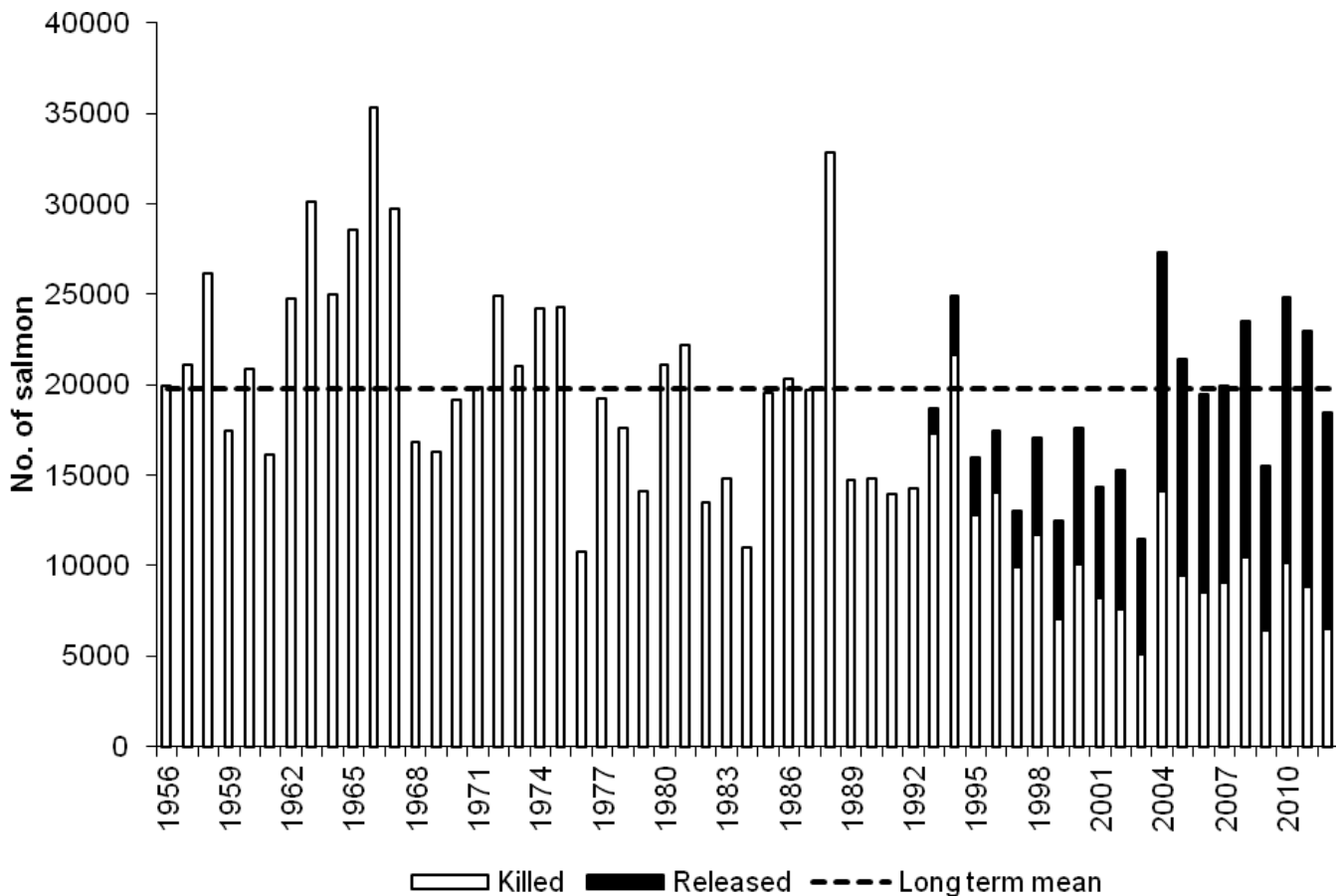


Figure 3 Total declared salmon rod catch for England & Wales, 1956-2012 (shaded area indicates fish caught and released).

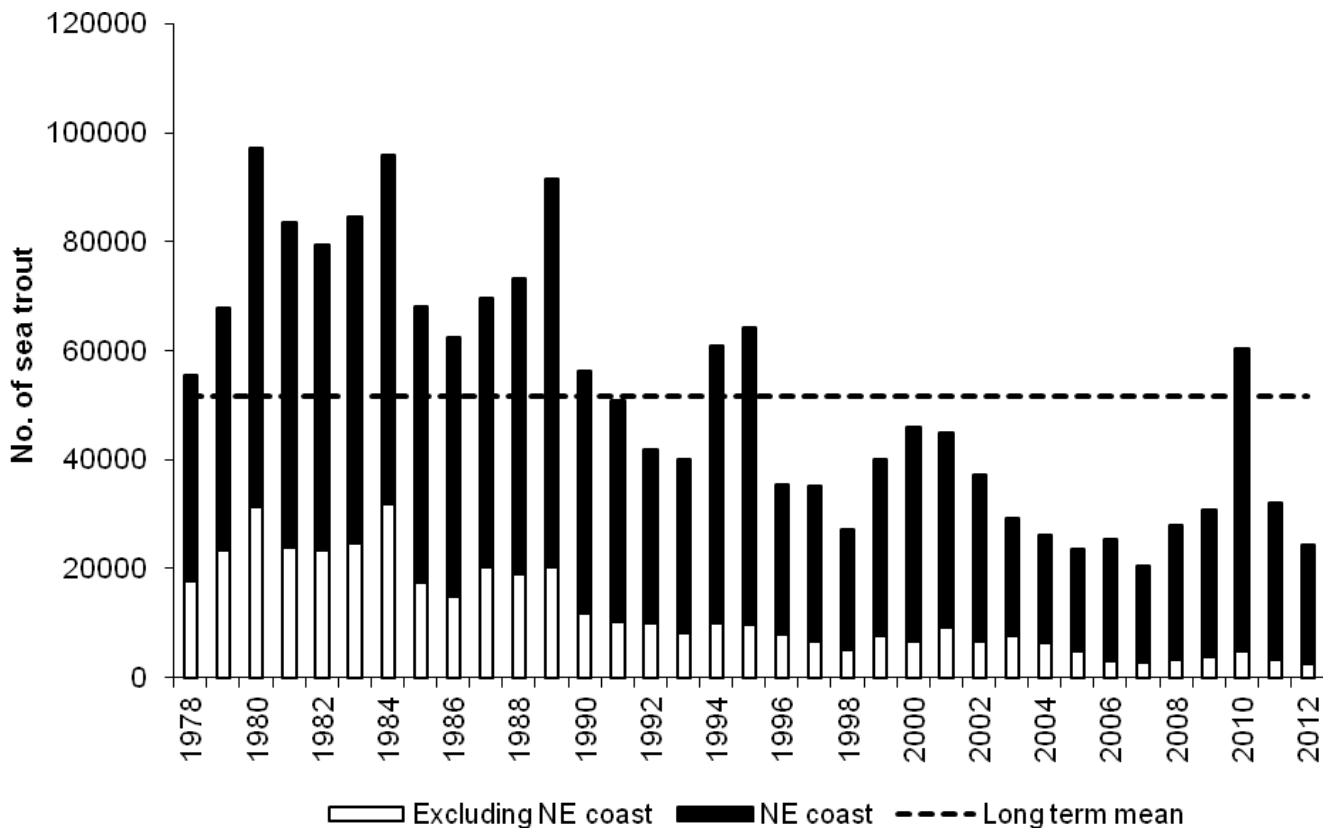


Figure 4 Total declared sea trout net and fixed engine catch for England & Wales, 1978-2012 (shaded area indicates the catch for the North East coast fishery).

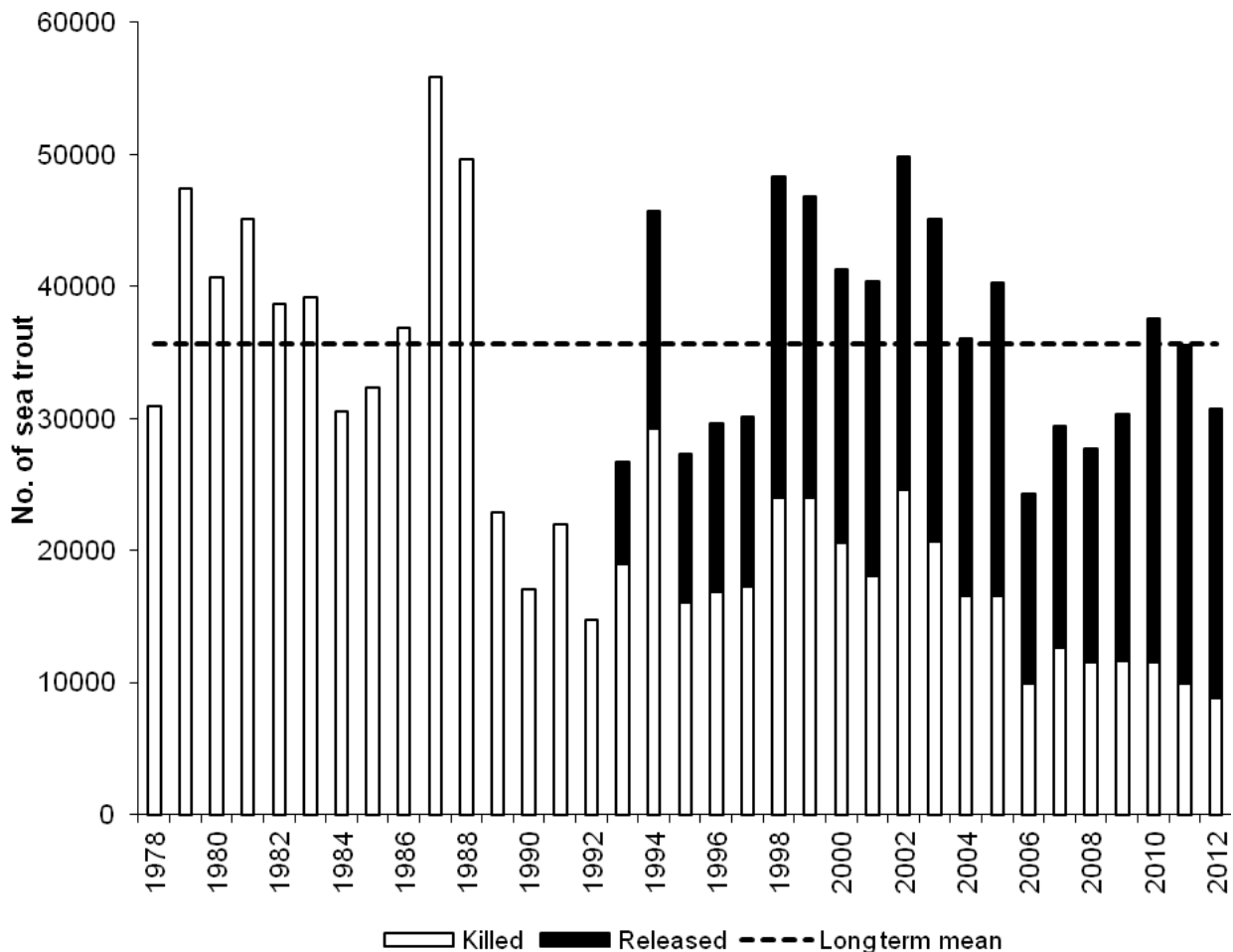


Figure 5 Total declared sea trout rod catch for England & Wales, 1978-2012 (shaded area indicates fish caught and released).

Section 5

Regional catch summaries (2012, 2011 and 5- year mean)

Table 4 Summary of salmon net and fixed engine catches by Region

	2012	2011	5-year mean (2007-2011)	% change (+/-) 2012 on 2011	% change (+/-) 2012 on 5-yr mean
North East	7,299	24,214	14171	-70%	-48%
Anglian	2	5	4	-60%	-50%
South East	0	0	0	-	-
South West	257	323	410	-20%	-37%
Midlands	210	171	541	23%	-61%
EA Wales	106	230	177	-54%	-40%
North West	577	915	1102	-37%	-48%

Table 5 Summary of sea trout net and fixed engine catches by Region

	2012	2011	5-year mean (2007-2011)	% change (+/-) 2012 on 2011	% change (+/-) 2012 on 5-yr mean
North East	21,953	28,637	34,001	-23%	-35%
Anglian	401	488	590	-18%	-32%
South East	0	9	1	-100%	-100%
South West	270	574	662	-53%	-59%
Midlands	2	0	2	100%	0%
EA Wales	1390	1906	1621	-27%	-14%
North West	373	291	839	28%	-56%

Table 6 Summary of salmon rod catches by Region

	2012*	2011	5-year mean (2007-2011)	% change (+/-) 2012 on 2011	% change (+/-) 2012 on 5-yr mean
North East	6,465	8,373	6249	-23%	3%
Anglian	0	0	0	0%	0%
South East *	364	415	235	-12%	55%
South West	2022	2402	2287	-16%	-12%
Midlands	249	362	277	-31%	-10%
EA Wales	4740	4784	4994	-1%	-5%
North West	4,609	6,672	7,099	-31%	-35%

Table 7 Summary of sea trout rod catches by Region

	2012 *	2011	5-year mean (2007-2011)	% change (+/-) 2012 on 2011	% change (+/-) 2012 on 5-yr mean
North East	4,037	4,492	4,665	-10%	-13%
Anglian	10	2	2	400%	400%
South East	727	984	358	-26%	103%
South West	4,849	6,216	5,920	-22%	-18%
Midlands	18	79	43	-77%	-58%
EA Wales	14,580	17,274	15,153	-16%	-4%
North West	6,476	6,517	5,615	-1%	15%

Section 5

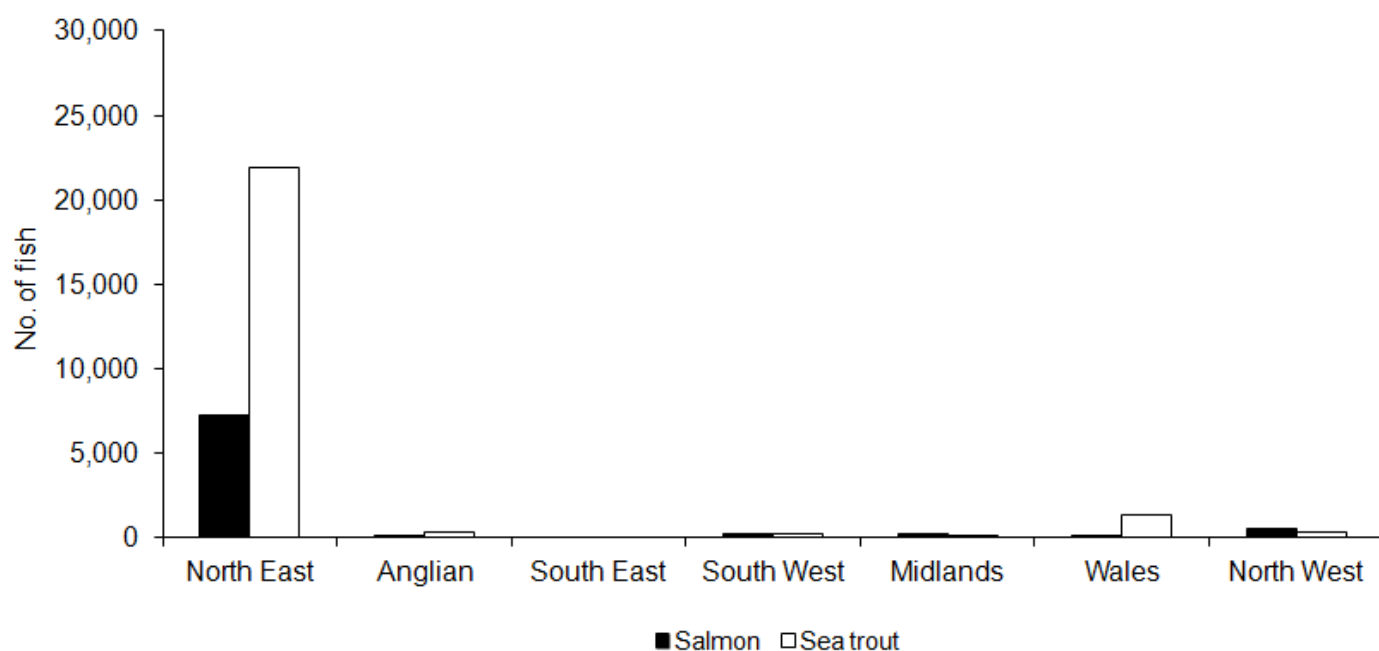


Figure 6 Declared salmon and sea trout net fixed engine catches by Region, 2012.

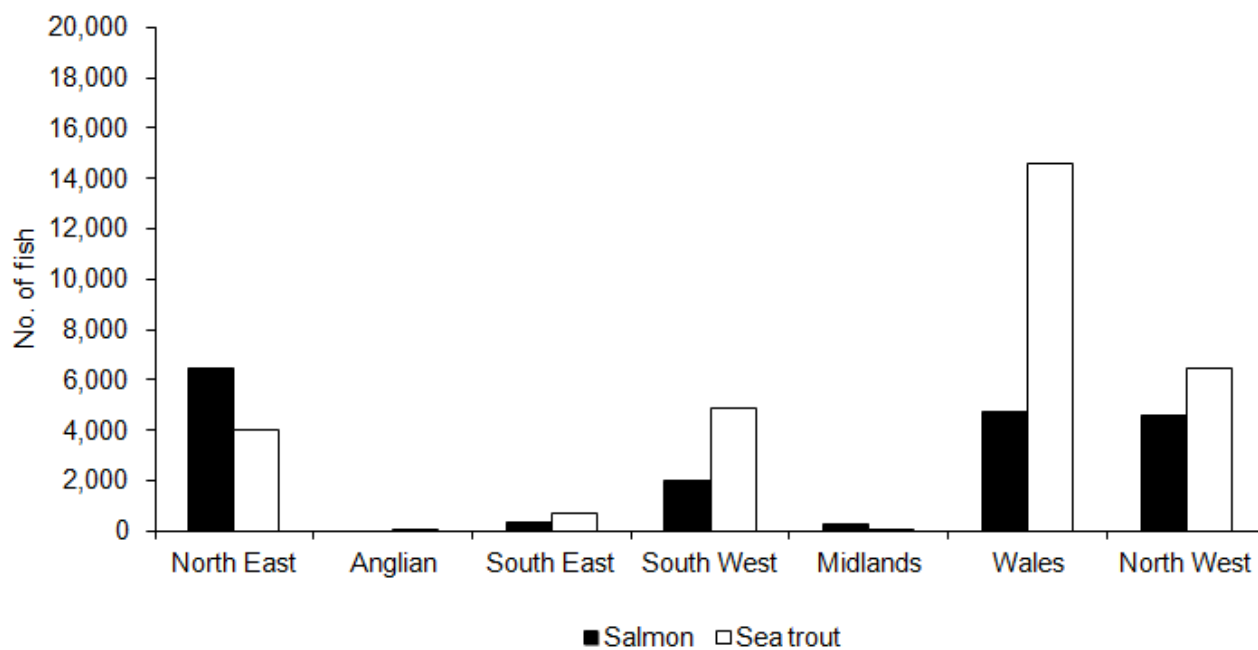


Figure 7 Declared salmon and sea trout rod catches by Region, 2012.

Section 6

Tables

Table 1	Licensed Net Fishing - Number & Value 2012 Season
Table 2	Eel, Elver, Lamprey and Smelt authorisations – Number and Value 2011 Season
Table 3	National Rod Fishing Licences – Number and Value Licences valid from 1 April 2012- 31 March 2013
Table 4	Net Season & Weekly Closure Times - Salmon & Sea Trout – 2012 Season
Table 5	Rod Fishing Season for Salmon & Sea Trout including method restrictions & bag limits 2012
Table 6	Main Updates for Rod & Net fisheries in 2012
Table 7	Salmon Net Catches – 2012 Season
Table 8	Sea Trout Net Catches – 2012 Season
Table 9	Salmon Rod Catches (released totals in brackets) – 2012 Season
Table 10	Sea Trout Rod Catches (released totals in brackets) – 2012 Season
Table 11	Rod Caught Salmon & Sea Trout, Average Weight (kg) - 2012 Season
Table 12	Number of rod caught salmon in weight categories (lb & kg) – 2012 Season
Table 13	Number of rod caught sea trout in weight categories (lb & kg) - 2012 Season
Table 14	Summary of salmon net catches, 2002 - 2012
Table 15	Summary of sea trout net catches, 2002 - 2012
Table 16	Summary of salmon rod catch, 2002 - 2012
Table 17	Summary of sea trout rod catch, 2002 - 2012
Table 18	Reported Net Effort data for Salmon & Sea Trout- 2012 Season
Table 19	Reported Rod Effort Data for Salmon & Sea Trout – 2012 Season
Table 20	Estimated Proportions of Grilse & Multi- Sea Winter (MSW) Salmon in Declared Rod Catch- 2012 Season
Table 21	Salmon Stocking – number of eggs, fry, parr and smolts released – 2012
Table 22	Sea Trout Stocking – number of eggs, fry, parr and smolts released – 2012

Section 6

Table 1 Licensed Net Fishing - Number & Value 2012 Season

Environment Agency Region	Fishing Method	Number of licences	Number of licensees (a)	Duty (£)	Value* (£)
North East Northumbria Area	Coastal (N) drift and T nets	6	3	1,313.00	3,939.00
	Coastal (N) drift nets	9	9	1,206.00	10,854.00
	Coastal (N) T nets	23	23	842.00	19,366.00
	Coastal (S) T nets	1	1	842.00	842.00
	Total	39	36		35,001.00
North East Yorkshire Area	Coastal drift nets	2	2	1,206.00	2,412.00
	Coastal T or J nets	35	35	842.00	29,470.00
	Total	37	37		31,882.00
Anglian	Drift nets	20	20	79.00	1,580.00
	Other nets (various)	5	5	79.00	395.00
	Total	25	25		1,975.00
South East	Seine nets	1	1	79.00	79.00
	Total	1	1		79.00
South West	Seine nets	1	1	381.00	381.00
	Total	1	1		381.00
South West Devon & Cornwall	Seine nets (single river)	12	12	343.00	4,116.00
	Drift nets (Camel)	6	6	314.00	1,884.00
	Total	18	18		6,000.00
Midlands	Lave nets (half season)	30	30	60.00	1,800.00
	Seine nets	1	1	285.00	285.00
	Fixed Engine ranks: 21 units (50 putchers per unit)	4	4	79.00 per unit	1,659.00
	Total	35	35		3,744.00
Environment Agency Wales	Compass nets	6	6	96.00	576.00
	Coracle nets (Teifi, Taf)	13	13	248.00	3,224.00
	Coracle nets (Towy)	7	7	555.00	3,885.00
	Wade nets	1	1	79.00	79.00
	Seine nets (Dyfi, Towy, Teifi)	7	7	582.00	4,074.00
	Seine nets (Dysynni, Conwy)	4	4	372.00	1,488.00
	Seine nets (Nevern, Mawddach)	3	3	261.00	783.00
	Lave nets	7	7	79.00	553.00
Total	48	48		14,662.00	
North West	Haaf nets (Solway)	58	58	143.00	8,294.00
	Drift nets (Ribble)	4	4	424.00	1,696.00
	Haaf nets (Lune)	12	12	285.00	3,420.00
	Drift nets (Lune)	7	7	582.00	4,074.00
	Lave nets (Kent)	4	4	143.00	572.00
	Lave nets (Leven)	2	2	143.00	286.00
	Coop nets (Eden)	3	3	367.00	1,101.00
Total	90	90		19,443.00	
England & Wales	Total	294	291		113,167.00
Key: * Value is calculated by the number of licensees multiplied by duty					

Section 6

Table 2 Eel, Elver, Lamprey and Smelt authorisations – Number and Value 2012 Season

Fishery	Authorisations				CATCHES (Kg)			
	Number of licences (a)	Method	No. instruments	Income (£)	Method	Elver	Yellow Eel	Silver Eel
Adult Eel	30	Small wingless traps	452	702.00	Small wingless traps	n/a	3,932	664
	88	Fyke nets	2,480	14,880.00	Fyke nets	n/a	28,664	5,157
	7	Fixed Traps	8	920.00	Fixed Traps	n/a	0	626
		Total	2,940.00	16,502.00	Total	n/a	32,596	6,447
Elver	489	Dip Net	489	41,264.00	Dip Net	2,779	n/a	n/a
		Total	489	41,264.00	Total	2,779	n/a	n/a
Grand Total			3,429	57,766	Grand Total	2,779	32,596	6,447

Fishery	Authorisations				CATCHES (Kg)	
	Number of licences (a)	Method	No. instruments	Income (£)	Method	Lamprey
Lamprey	3	Pot Traps	60	£230.00	Pot Traps	1,187
	1	Fyke Nets	0	0	Fyke Nets	0
Total			60	£230.00	Total	1,187

Fishery	Authorisations				CATCHES (Kg)	
	Number of licences (a)	Method	No. instruments	Income (£)	Method	Smelt
Smelt	2	Pot Traps	355	£240.00	Pot Traps	10,383
	2	Fyke Nets	12	£80.00	Fyke Nets	886
Total			367	£320.00	Total	11,269

Section 6

Table 3 National Rod Fishing Licences – Number and Value Licences valid from 1 April 2012- 31 March 2013

Environment Agency Region	Non-migratory trout and coarse fish						Salmon and sea trout						All licences	
	Full Duty £27.00	Concession Duty £18.00	Junior Duty £5.00	8 Day Duty £10.00	1 Day Duty £3.75	Total	Full Duty £72.00 (a)	Concession Duty £48.00 (a)	Junior Duty £5.00	8 Day Duty £23.00	1 Day Duty £8.00	Total	Total Number	(%)
North East	74,663	25,882	11,501	5,492	52,189	169,727	2,850	1,394	523	351	1,406	6,524	176,251	14%
Anglian	103,289	32,387	15,813	8,212	55,433	215,134	304	224	273	351	335	1,487	216,621	17%
Thames	103,776	26,961	13,772	9,409	66,903	220,821	1,126	384	399	542	992	3,443	224,264	17%
Southern	54,098	16,082	9,004	6,131	37,918	123,233	446	270	271	204	326	1,517	124,750	10%
South West	40,806	12,910	5,758	3,565	25,899	88,938	1,730	984	320	215	817	4,066	93,004	7%
Midlands	116,579	43,203	16,195	7,304	62,470	245,751	1,158	887	346	321	754	3,466	249,217	19%
E.A. Wales	21,913	443	4,084	1,503	16,100	44,043	3,390	2,001	654	159	618	6,822	50,865	4%
North West	71,625	23,621	10,686	4,977	36,265	147,174	3,315	2,105	546	230	966	7,162	154,336	12%
Unknown	1,331	7,435	318	2,726	3,164	14,974	102	68	17	191	257	635	15,609	1%
Total	588,080	188,924	87,131	49,319	356,341	1,269,795	14,421	8,317	3,349	2,564	6,471	35,122	1,304,917	
Total Value (£)	£15,878,160	£3,400,632	£435,655	£493,190	£1,336,279	21,543,916	£1,028,592	£397,452	£16,645	£58,972	£51,768	£1,553,429	£23,097,345	

(a) Full and concession salmon and sea trout licences include upgrades from non-migratory trout and coarse fish licences.

Section 6

Table 4 Net Season & Weekly Closure Times- Salmon & Sea Trout – 2012

Environment Agency Region	River/ Fishery	Fishing Method	Season inclusive dates (see below)	Weekly closure times	Voluntary Closures/Buyouts Other	
North East Northumbria	Coastal (N)	Drift nets	1.6 - 31.8	1800 Fri to 0600 Mon	Nightly close time 2000 to 0400	
		T nets (a)	26.3 - 31.8	1800 Fri to 0600 Mon	Nightly close time 2000 to 0400	
	Coastal (S)	Drift nets	1.6 - 31.8	1800 Fri to 0600 Mon	Nightly close time 2000 to 0400	
		T nets (a)	26.3 - 31.8	1800 Fri to 0600 Mon	Nightly close time 2000 to 0400	
North East Yorkshire	Coastal	Drift nets	1.6 - 31.8	1800 Fri to 0600 Mon	Nightly close time 2000 to 0400	
		T or J nets (a)	26.3 - 31.8	2000 Fri to 0600 Mon		
Anglian	Coastal	Drift nets (a)	1.4 - 30.9	0600 Sun to 2400 Mon		
		Other nets (a)	1.4 - 30.9	0600 Sun to 2400 Mon		
Southern	Hants area	Seine nets	15.2 - 31.7	0600 Sat to 0600 Mon		
South West	Avon + Stour Poole Harbour	Seine nets	1.6 - 31.7	0600 Sat to 0600 Mon &	Net Fishery is Closed as of 2012 Partial buyback arrangements complete buy out- Exe mitigation group Partial buy out from 2006 Partial buy out from 2006 Buyout - complete season Buyout - complete season Buyout - complete season Buyout - complete season Partial Buyout	
		Seine net	1.6 - 31.7	2100 - 0500 Wed, Thu, Fri		
	Exe	Seine nets (upper reach)	1.6 - 14.8	0600 Sat to 0600 Mon		
	Exe	Seine nets (lower reach)	1.6 - 14.8	0600 Sat to 0600 Mon		
	Teign	Seine nets (a)	15.3 - 31.7	0600 Sat to 0600 Mon		
	Dart	Seine nets (a)	15.3 - 16.8	0600 Sat to 0600 Mon		
	Camel	Drift nets	1.6 - 31.8	0600 Sat to 0600 Mon		
	Tavy	Seine nets	1.6 - 31.8	0600 Fri to 0600 Mon (2.3 - 31.5)		
	Tamar	Seine nets	1.6 - 31.8	&		
	Lynher	Seine nets	1.6 - 31.8	0600 Sat to 0600 Mon (1.6 - 31.8)		
	Fowey	Seine nets (a)	2.3 - 31.8	0600 Sat to 0600 Mon		
	Taw/Torrige	Seine nets	1.6 - 31.7	0600 Fri to 0600 Mon		
	Midlands	Severn	Seine nets	1.6 - 31.8		1200 Sat to 0600 Mon
Lave nets			1.6 - 31.8	1200 Sat to 0600 Mon		
Fixed Engines			1.6 - 15.8	no closure period		
Environment Agency Wales	Tywi	Coracle nets (a)	1.3 - 31.7	0600 Sat to 1200 Mon		
		Seine nets	1.3 - 31.7	0600 Sat to 1200 Mon		
	Taf	Wade net	1.6 - 31.7	0600 Sat to 1200 Mon		
		Coracle net (a)	1.3 - 31.7	0600 Sat to 1200 Mon		
	Cleddau	Compass nets	1.6 - 31.8	0600 Sat to 1200 Mon		
		Seine net (a)	1.4 - 31.8	0600 Sat to 1200 Mon		
	Nevern	Seine nets (a)	1.4 - 31.8	0600 Sat to 1200 Mon		
		Coracle nets (a)	1.4 - 31.8	0600 Sat to 1200 Mon		
	Dyfi	Seine nets (a)	1.4 - 31.8	0600 Sat to 0600 Mon		
		Seine net	1.6 - 31.8	0600 Sat to 0600 Mon		
	Dysynni	Seine net	1.6 - 31.8	0600 Sat to 0600 Mon		
	Mawddach	Seine nets	1.6 - 31.8	0600 Sat to 0600 Mon		
	Conwy	Basket trap	1.6 - 31.8	no closure period		
		Seine nets	1.6 - 31.8	0600 Sat to 0600 Mon		
	Black Rock	Lave net	1.6 - 31.8	2400 Thur to 2400 Sun		
	North West	Ribble	Drift nets	1.6 - 31.8		0600 Sat to 0600 Mon
			Haaf nets	1.6 - 31.8		0600 Sat to 0600 Mon
Drift nets			1.6 - 31.8	0600 Sat to 0600 Mon		
Kent Leven		Lave nets	1.6 - 31.8	0600 Sat to 0600 Mon		
		Lave nets	1.7 - 31.8	0600 Sat to 0600 Mon		
Eden		Coops	1.6 - 31.8	0600 Sat to 0600 Mon		
Solway		Haaf nets	1.6 - 9.9	0600 Sat to 2400 Sun		

(a) Sea trout fisheries exempted from national byelaws. All salmon caught before 1 June to be released alive.

Section 6

Table 5 Rod Fishing Seasons for Salmon & Sea Trout including method restrictions & bag limits 2012

Environment Agency Region	River	Salmon Season (inclusive dates)	Sea trout Season (inclusive dates)	*Method Restrictions	*Bag limits/Catch and Release etc.
North East	Aln	1.2 - 31.10	3.4 - 31.10		
	Coquet	1.2 - 31.10	3.4 - 31.10		
	Tyne	1.2 - 31.10	3.4 - 31.10		
	Wear	1.2 - 31.10	3.4 - 31.10		
	Tees	1.2 - 31.10	3.4 - 31.10		
	Esk (Yorks.) Ouse (Yorks.)	6.4 - 31.10 6.4 - 31.10	6.4 - 31.10 6.4 - 31.10		
Anglian	Region	1.4 - 28.9	1.4 - 28.9		2 bag limit per day
Thames	Thames	1.4 - 30.9	1.4 - 30.9		2 salmon bag limit a day
Southern	Test	17.1 - 2.10	1.5 - 31.10	Voluntary worm ban throughout season	Catch & Release all season for salmon (local agreement)
	Itchen	17.1 - 2.10	1.5 - 31.10	Voluntary worm ban throughout season	Catch & Release all season for salmon (local agreement)
South West	Avon (Hants.)	1.2 - 31.8	15.4 - 31.10	artificial fly only before 15/5	Fly only and mandatory catch and release during trial extension period
	Piddle	1.3 - 31.8	15.4 - 31.10	artificial fly only before 15/5	
	Frome	1.3 - 31.8	15.4 - 31.10	artificial fly only before 15/5	
	Axe	15.3 - 31.10	15.4 - 31.10	no shrimp, prawn, worm or maggot. Fly only after 31/7 below Axbridge	
	Exe	14.2 - 30.9	15.3 - 30.9	no worm or maggot	
	Teign	1.2 - 30.9	15.3 - 31.10	no worm or maggot before 1/6	
	Dart	1.2 - 30.9	15.3 - 30.9	no worm or maggot. No shrimp/prawn exc. below Staverton Br.	
	Avon (Devon)	15.4 - 30.11	15.4 - 30.9	no worm or maggot	
	Plym	1.4 - 15.12	3.3 - 30.9		
	Tavy	1.3 - 14.10	3.3 - 30.9		
	Tamar	1.3 - 14.10	3.3 - 30.9	no worm, maggot, shrimp or prawn after 31/8	
	Lynher	1.3 - 14.10	3.3 - 30.9		
	Fowey	1.4 - 15.12	1.4 - 30.9		
	Camel	1.4 - 15.12	1.4 - 30.9		
	Taw	1.3 - 30.9	15.3 - 30.9	no shrimp, prawn, worm or maggot. Fly only 1/4 to 31/5	
	Torridge	1.3 - 30.9	15.3 - 30.9	no shrimp, prawn, worm or maggot. Fly only 1/4 to 31/5	
Lyn	1.2 - 31.10	15.3 - 30.9	no worm or maggot before 1/6		
Yealm	1.4 - 15.12	3.3 - 30.9			
Midlands	Severn	1.2 - 7.10	18.3 - 7.10	no float fishing with lure or bait	
Environment Agency Wales	Wye	3.3 - 17.10 (a)	3.3 - 17.10 (a)	Fly only 1.9 to 17.10. No bait all season	Catch & Release salmon and sea trout 18.10 to 25.10
	Usk	3.3 - 17.10	3.3 - 17.10	Fly only 3.3 - 1.6. Fly and Spin 15.9 - 17.10	
	Taff	20.3 - 17.10	20.3 - 17.10	Fly and Spin 20.3 - 15.4 & 1.10 - 17.10	
	Ogmore	20.3 - 17.10	20.3 - 17.10	Fly and Spin 20.3 - 15.4 & 1.10 - 17.10	
	Afan	20.3 - 17.10	20.3 - 17.10	Fly and Spin 20.3 - 15.4 & 1.10 - 17.10	
	Neath	20.3 - 17.10	20.3 - 17.10	Fly and Spin 20.3 - 15.4 & 1.10 - 17.10	
	Tawe	20.3 - 17.10	20.3 - 17.10	Fly and Spin 20.3 - 15.4 & 7.10 - 17.10	
	Loughor	20.3 - 17.10	20.3 - 17.10	Fly and Spin 20.3 - 15.4 & 7.10 - 17.10	
	Tywi	1.4 - 17.10	1.4 - 17.10	Fly and Spin 7.10 - 17.10	
	Taf	1.4 - 17.10	1.4 - 17.10	Fly and Spin 7.10 - 17.10	
	E+W.Cleddau	1.4 - 17.10	1.4 - 17.10	Fly and Spin 7.10 - 17.10	
	Nevern	1.4 - 17.10	1.4 - 17.10	Fly and Spin 7.10 - 17.10	
	Teifi	1.4 - 17.10	1.4 - 17.10	Fly and Spin 7.10 - 17.10	
	Aeron	1.4 - 17.10	1.4 - 17.10	Fly and Spin 7.10 - 17.10	
	Ystwyth	1.4 - 17.10	1.4 - 17.10	Fly and Spin 7.10 - 17.10	
	Rheidol	1.4 - 17.10	1.4 - 17.10	Fly and Spin 7.10 - 17.10	
	Dyfi	20.3 - 17.10 (some sections to 31.10)	20.3 - 17.10 (some sections to 31.10)	Fly and Spin 20.3 - 15.4 & 7.10 - 31.10	
	Dysynni	20.3 - 17.10	20.3 - 17.10	Fly and Spin 20.3 - 15.4 & 7.10 - 17.10	
	Mawddach	20.3 - 17.10	20.3 - 17.10	Fly and Spin 20.3 - 15.4 & 7.10 - 17.10	
	Arro	20.3 - 17.10	20.3 - 17.10	Fly and Spin 20.3 - 15.4 & 7.10 - 17.10	
	Dwyrdd	20.3 - 17.10 (some sections to 31.10)	20.3 - 17.10 (some sections to 31.10)	Fly and Spin 20.3 - 15.4 & 7.10 - 31.10	
	Glaslyn	20.3 - 17.10	20.3 - 17.10	Fly and Spin 20.3 - 15.4 & 7.10 - 17.10	
	Dwyflawr	20.3 - 17.10	20.3 - 17.10	Fly and Spin 20.3 - 15.4 & 7.10 - 17.10	
	Llyfni	20.3 - 17.10	20.3 - 17.10	Fly and Spin 20.3 - 15.4 & 7.10 - 17.10	
	Gwyrfai	20.3 - 17.10	20.3 - 17.10	Fly and Spin 20.3 - 15.4 & 7.10 - 17.10	
	Seiont	20.3 - 15.11	20.3 - 15.11	Fly and Spin 20.3 - 15.4 & 7.10 - 15.11	
	Ogwen	20.3 - 17.10 (some sections to 31.10)	20.3 - 17.10 (some sections to 31.10)	Fly and Spin 20.3 - 15.4 & 7.10 - 31.10	
	Conwy	20.3 - 17.10 (some sections to 31.10)	20.3 - 17.10 (some sections to 31.10)	Fly and Spin 20.3 - 15.4 & 7.10 - 31.10	
	Clwyd	20.3 - 17.10	20.3 - 17.10	Fly and Spin 20.3 - 1.6. Fly only 1.10 - 17.10	
	Dee	20.3 - 17.10	20.3 - 17.10	Fly only 20.3 - 14.4, Fly and Spin 15.4 - 17.10	

Section 6

Table 5 (continued)

Rod Fishing Seasons for Salmon & Sea Trout including method restrictions & bag limits 2012

Environment Agency Region	River	Salmon Season (inclusive dates)	Sea trout Season (inclusive dates)	*Method Restrictions	*Bag limits/Catch and Release etc.
North West	Ribble	1.2 - 31.10	1.4 - 30.9		Byelaw (28/02/07) No more than 2 salmon can be killed per season Byelaw (NW-14/02/00) no more than four salmon may be killed during the season. Byelaw (NW-08/05/03) requiring release of all salmon after capture. Byelaw (NW-08/05/03) requiring release of all salmon after capture. Salmon:16/6-14/10 daily bag 2,10/9-14/10 C&R (F).Sea trout:1/4-30/9 daily bag 2,10/9-30/9 C&R(F) Salmon:16/6-14/10 daily bag 2,10/9-14/10 C&R (F).Sea trout:1/4-30/9 daily bag 2,10/9-30/9 C&R(F)
	Wyre	1.2 - 31.10	1.4 - 30.9		
	Lune	1.2 - 31.10	1.4 - 30.9		
	Kent	1.2 - 31.10	1.4 - 30.9		
	Leven	1.2 - 31.10	1.4 - 30.9		
	Crake	1.2 - 31.10	1.4 - 30.9		
	Duddon	1.2 - 31.10	1.4 - 30.9		
	Esk (Cumbrian)	1.2 - 31.10	1.4 - 30.9		
	Irt	1.2 - 31.10	1.4 - 30.9		
	Calder	1.2 - 31.10	1.4 - 30.9		
	Ehen	1.2 - 31.10	1.4 - 30.9		
	Derwent	1.2 - 31.10	1.4 - 30.9		
	Ellen	1.2 - 31.10	1.4 - 30.9		
	Eden	15.1 - 14.10	1.4 - 30.9		
	Esk (Border)	1.2 - 31.10	1.4 - 30.9		
Others	1.2 - 31.10	1.4 - 30.9			
Notes	(a) Season 3.3 to 25.10 Rivers Irfon, Ithon and main River Wye upstream of Llanwrthwl Bridge Note: EA Wales - variations apply to Anglesey and Lley'n Paninsula (check local byelaws).		* National spring salmon byelaws apply Please always check local byelaws and club rules before fishing.		

Table 6 Main Updates for Rod & Net fisheries in 2012

	Area	
National	England & Wales	No new statutory effort controls were imposed on salmon and sea trout rod fisheries operating in 2012, although mandatory catch and release was imposed on the rod fisheries on the Rivers Wye, Taff and Ely in Wales and continued to apply in Rivers Leven and Crake in the North West Region.
Regional	South West	There were no changes in the methods used to take salmon and sea trout in England and Wales in 2012 and few statutory changes. However, a number of NLOs came up for review in the year. For the fishery on Christchurch Harbour (Rivers Avon and Stour) a zero NLO was approved and came into effect in 2012; no fishing took place at this location in 2012. A new NLO for 1 seine net was agreed for Poole Harbour (Rivers Piddle and Frome). A new NLO for 1 seine net was also approved for the Taw/Torrige, replacing the previous phase out (zero NLO).

Section 6

Table 7

Salmon Net Catches – 2012 Season

Environment Agency Region	River/ Fishery	Fishing Method	No. Lics	Phase Out NLO	Feb	Mar	Apr	May	Jun	Jul	Aug	Sep	Un-Known	Total Number	Total Weight (kg)	Average Weight (kg)
North East Northumbria	Coastal (N)	Drift nets	12 (a)	X	-	-	-	-	914	1,102	999	-	0	3,015	10,766	4
		T nets	26 (a)		-	0	0	0	277	1,687	1,479	-	0	3,443	12,318	4
	Coastal (S)	Drift nets	0	X	-	-	-	-	-	-	-	-	-	0	-	-
		T nets	1		-	0	0	0	0	0	0	0	-	0	0	0
North East Yorkshire	Coastal	Drift nets	2	X	-	-	-	-	95	177	284	-	0	556	2,183	4
		T or J nets*	35		-	0	-	0	40	100	122	-	0	262	849	3
	Whole area	Total	76		-	0	0	0	1,326	3,066	2,884	0	0	7,276	26,115	4
Anglian	Coastal	Drift nets	20	X	-	-	0	0	0	0	0	0	0	0	0	0
		Other nets (var.)	5	X	-	-	0	0	1	1	0	0	0	2	5	2
	Whole area	Total	25		-	-	0	0	1	1	0	0	0	2	5	2
Southern	Solent area	Seine nets	1		-	-	-	-	0	0	-	-	0	0	0	0
	Whole area	Total	1		-	-	-	-	0	0	-	-	0	0	0	0
South West	Avon + Stour**	Seine nets	0		-	-	-	-	0	0	-	-	0	0	0	0
	Poole Harbour	Seine net	1		-	-	-	-	0	1	-	-	0	1	2	2
	Exe	Seine nets	3		-	-	-	-	21	39	37	-	0	97	318	3
	Teign	Seine nets	3		-	-	0	0	21	54	-	-	0	75	271	4
	Dart	Seine nets	2		-	-	0	0	2	5	4	-	0	11	33	3
	Camel	Drift nets	6		-	-	-	-	6	16	5	-	0	27	101	4
	Tavy	Seine nets	1		-	-	-	-	-	-	-	-	-	0	0	0
	Tamar	Seine nets	0		-	-	-	-	-	-	-	-	-	0	0	0
	Lynher	Seine nets	0		-	-	-	-	-	-	-	-	-	0	0	0
	Fowey	Seine nets	0		-	-	-	-	-	-	-	-	-	0	0	0
	Taw/Torridge	Seine nets	3	X	-	-	-	0	20	27	-	-	0	47	176	4
	Whole area	Total	19		-	0	0	0	70	142	46	-	0	258	902	3
	Midlands	Severn	Draft net	1	X	-	-	-	-	0	0	0	-	0	0	0
Lave nets			30 (b)	X	-	-	-	-	29	30	23	-	0	82	377	5
Putcher Rank			4		-	-	-	-	102	22	4	-	0	128	647	5
Whole area		Total	35		-	-	-	-	131	52	27	-	0	210	1,024	5
Environment Agency Wales	Wye	Lave nets	7		-	-	-	-	1	5	1	-	0	7	27	4
		Seine nets	3		-	0	0	2	12	16	0	-	0	30	114	4
	Tywi	Coracle nets	7		-	1	2	0	11	7	-	-	0	21	185	9
		River total	10		-	-	-	2	23	23	0	-	0	51	299	6
		Wade net	1		-	-	-	-	0	0	0	-	-	0	0	0
		Coracle net	1		-	-	-	-	0	0	0	-	-	0	0	0
	Taf	River total	2		-	-	-	0	0	0	0	-	-	0	0	0
		Compass nets	6		-	-	-	-	0	0	2	0	0	2	6	3
	E+W.Cleddau	Seine net	1		-	-	-	-	0	0	0	-	-	0	0	0
		Seine nets	2		-	-	0	0	0	0	0	-	-	0	0	0
	Nevern	Coracle nets	12		-	-	0	0	14	9	7	-	-	30	116	4
		River total	14		-	-	-	0	14	9	7	-	-	30	116	4
		Seine nets	2		-	-	0	0	0	0	0	-	-	0	0	0
	Dyfi	Seine net	1		-	-	-	-	0	0	0	-	-	0	0	0
		Seine nets	2		-	-	-	-	0	0	0	-	-	0	0	0
	Dysynni	Seine nets	0		-	-	-	-	0	0	0	-	-	0	0	0
		Seine nets	0		-	-	-	-	0	0	0	-	-	0	0	0
	Mawddach	Seine nets	0		-	-	-	-	0	0	0	-	-	0	0	0
		Seine nets	0		-	-	-	-	0	0	0	-	-	0	0	0
	Glaslyn	Basket trap	0		-	-	-	-	0	0	0	-	-	0	0	0
		Seine nets	3		-	-	-	-	1	2	13	-	-	16	14	1
	Conwy	River total	3		-	-	-	0	0	2	13	-	-	16	14	0
		Trammel nets	0	X	-	-	-	-	0	0	0	-	-	0	0	0
Dee	Draft nets	0	X	-	-	-	-	0	0	0	-	-	0	0	0	
	River total	0		-	-	-	0	0	0	0	-	-	0	0	0	
	Total	48		-	-	-	2	38	39	23	-	-	106	462	4	
North West	Ribble	Drift nets	4		-	-	-	-	7	13	33	0	0	53	267	5
	Lune	Haaf nets	12		-	-	-	-	9	18	28	0	0	55	243	4
		Drift nets	7		-	-	-	-	14	44	44	-	0	102	446	4
		Seine net	0	X	-	-	-	-	0	0	0	-	-	0	0	0
		River total	19		-	-	-	-	23	62	72	-	-	157	688	4
	Kent	Lave nets	4		-	-	-	-	3	2	1	-	-	6	22	4
		Lave nets	2		-	-	-	-	-	0	1	-	-	1	3	3
	Eden + Esk (Solway)	Haaf nets	58		-	-	-	0	37	89	200	23	0	349	1,263	4
		Coop nets	3		-	-	-	-	1	2	8	0	0	11	47	4
	Whole area	Total	90		-	-	-	-	71	168	315	23	0	577	2,289	4
England and Wales			294		-	0	0	2	1,637	3,468	3,295	23	0	8,429	30,798	3.65

Key: (a) Separate licences for drift and T nets were issued for the first time in the northern area in 1993. (b) Figures for half- and full-season lave nets combined.
(X) Denotes that a phase out Net Limitation Order (NLO) is in place.

Notes: - Salmon caught pre 1 June released alive
- A dash is used to denote months that fall entirely within the annual close season.

** Avon/Stour - Net Fishery Effectively Closed from 2012. Poole Harbour - All salmon tagged (CWCT) and released

Table 8 Sea Trout Net Catches – 2012 Season

Environment Agency Region	River/ Fishery	Fishing Method	No. Lics	Phase Out NLO	Feb	Mar	Apr	May	Jun	Jul	Aug	Sep	Un-known	Total Number	Total Weight (kg)	Average Weight (kg)	
North East Northumbria	Coastal (N)	Drift nets	12 (a)	X	-	-	-	-	1,952	970	503	-	0	3,425	7,236	2	
		T nets	26 (a)		-	0	0	864	2,456	4,056	2,096	-	0	9,472	15,627	2	
North East Yorkshire	Coastal (S)	Drift nets	0	X	-	-	-	-	-	-	-	-	0	-	-	-	
		T nets	1		-	0	0	0	0	0	0	0	-	0	0	0	
	Coastal	Drift nets	2	X	-	-	-	-	384	190	215	-	0	789	1,955	2	
		T or J nets*	35		-	0	0	1,030	2,934	2,388	1,938	-	0	8,290	15,170	2	
	Whole area	Total	76		-	0	0	1,894	7,726	7,604	4,752	0	0	21,976	39,988	2	
Anglian	Coastal	Drift nets	20	X	-	-	0	35	18	90	100	113	0	356	408	1	
		Other nets (var.)	5	X	-	-	0	7	4	0	14	20	0	45	75	2	
		Total	25		-	0	0	42	22	90	114	133	0	401	483	1	
Southern	Solent Area	Seine nets	1		-	-	-	-	0	0	-	-	0	0	0	0	
South West	Avon + Stour***	Seine nets	0		-	-	-	-	0	0	-	-	0	0	0	0	
	Poole Harbour**	Seine net	1		-	-	-	-	6	0	-	-	0	6	18	3	
	Exe	Seine nets	3		-	-	-	-	0	1	0	-	0	1	2	2	
	Teign	Seine nets	3 (b)		-	6	15	41	43	33	-	-	0	138	176	1	
	Dart	Seine nets	2 (b)		-	-	15	3	0	5	9	-	0	32	49	2	
	Tavy	Seine nets	1		0	0	0	0	0	0	0	0	0	0	0	0	
	Tamar	Seine nets	0		0	0	0	0	0	0	0	0	0	0	0	0	
	Lynher	Seine nets	0		0	0	0	0	0	0	0	0	0	0	0	0	
	Camel	Drift nets	6		-	-	-	-	0	1	0	-	0	1	3	3	
	Fowey	Seine nets	0 (b)		-	0	0	0	0	0	0	-	0	0	0	0	
	Taw/Torridge	Seine nets	3	X	-	-	-	0	44	54	-	-	0	98	69	1	
		Whole area	Total	19		-	6	30	44	93	94	9	-	0	276	316	1
	Midlands	Severn	Draft net	1	X	-	-	-	-	0	0	0	-	-	0	0	0
Lave nets			30 (b)	X	-	-	-	-	0	0	0	-	-	0	0	0	
Putcher rank			4		-	-	-	-	2	0	0	-	-	0	2	7	4
Total			35		-	-	-	-	2	0	0	-	-	0	2	7	4
Environment Agency Wales	Tywi	Seine nets	3 (b)		-	31	119	141	91	17	-	-	0	399	839	2	
		Coracle nets	7 (b)		-	47	160	190	89	29	-	-	0	515	1,317	3	
		River total	10		-	78	279	331	180	46	-	-	0	914	2,155	2	
	Taf	Wade net	1		-	-	-	-	0	0	-	-	0	0	0	0	
		Coracle net	1 (b)		-	-	0	0	0	0	-	-	0	0	0	0	
		River total	2		-	-	0	0	0	0	0	-	0	0	0	0	
	E+W.Cleddau	Compass nets	6		-	-	-	-	0	0	0	0	0	0	0	0	
		Seine nets	2 (b)		-	-	1	48	7	0	0	-	0	56	91	2	
	Teifi	Coracle nets	12 (b)		-	-	61	219	66	18	11	-	0	375	681	2	
		River total	14		-	-	62	267	73	18	11	-	0	431	772	2	
	Dyfi	Seine nets	2 (b)		-	-	0	11	6	0	0	-	0	17	39	2	
	Dysynni	Seine net	1		-	-	-	-	2	2	4	-	0	8	17	2	
	Mawddach	Seine nets	2		-	-	-	-	0	0	0	-	0	0	0	0	
	Nevern	Seine nets	1		-	-	-	-	14	1	0	-	0	15	20	1	
	Conwy	Seine nets	3		-	-	-	-	4	0	1	-	0	5	7	1	
	Chwyd	Sling nets	0	X	-	-	-	-	-	-	-	-	-	-	-	-	
	Dee	Seine nets	0	X	-	-	-	-	-	-	-	0	-	0	0	0	
	Whole area	Total	41		0	78	341	609	279	67	16	0	0	1,390	3,010	2	
North West	Ribble	Drift nets	4		-	-	-	-	1	1	0	0	0	2	5	2	
		Haaf nets	12		-	-	-	-	86	4	0	0	0	90	127	1	
	Lune	Drift nets	7		-	-	-	-	15	0	0	-	0	15	34	2	
		Seine net	0	X	-	-	-	-	0	0	0	-	0	0	0	0	
		River total	19		-	-	-	-	101	4	0	-	0	105	162	2	
	Kent	Lave nets	4		-	-	-	-	3	1	0	-	0	4	8	2	
	Leven	Lave nets	2		-	-	-	-	0	0	-	0	0	0	0	0	
	Solway	Haaf nets	58		-	-	-	1	249	8	2	0	0	260	290	1	
	Eden	Coop nets	3		-	-	-	-	0	0	2	-	0	2	2	1	
		Whole area	Total	90		-	-	-	0	354	14	4	0	0	373	467	1
England and Wales			287	0	0	0	84	371	2,589	8,476	7,869	4,895	133	0	24,418	44,270	1.81
<p>Key: (a) Separate licences for drift and T nets were issued for the first time in the northern area in 1993. (b) Sea trout fisheries exempted from national byelaws (X) Denotes that a phase out Net Limitation Order (NLO) is in place.</p> <p>Notes: Both the River Wye and Severn net fisheries are prohibited to catch sea trout as such they are not included in this table A dash denotes months that fall entirely within the annual close season. * Sea Trout caught pre 1 June released alive ** All sea trout tagged (GWCT) and released following capture *** Net Fishery effectively closed from 2012</p>																	

Section 6
Table 9

Salmon Rod Catches (released totals in brackets) – 2012 Season

Environment Agency Region	River	Jan	Feb	Mar	Apr	May	Jun	Jul	Aug	Sep	Oct	Nov	Dec	Un-known	Total Number
North East	Aln	- -	- -	1 (1)	3 (3)	2 (2)	1 (1)	2 (0)	4 (1)	5 (1)	4 (1)	- -	- -	- -	22 (10)
	Coquet	- -	1 (1)	2 (2)	20 (20)	38 (38)	107 (81)	73 (23)	103 (45)	134 (84)	309 (210)	- -	- -	- -	787 (504)
	Esk (Yorks.)	- -	- -	- -	- -	- -	5 (2)	8 (2)	17 (9)	42 (24)	53 (43)	- -	- -	1 (0)	126 (80)
	Ouse (Yorks.)	- -	- -	- -	3 (3)	11 (11)	21 (19)	32 (29)	21 (21)	24 (23)	40 (38)	- -	- -	8 (8)	160 (152)
	Tees	- -	- -	- -	- -	2 (1)	5 (5)	11 (4)	22 (14)	63 (48)	103 (86)	- -	- -	5 (5)	211 (163)
	Tyne	3 (3)	23 (23)	53 (53)	61 (61)	96 (95)	307 (166)	400 (163)	675 (299)	1078 (620)	1275 (895)	7 (5)	- -	28 (15)	4006 (2398)
	Wear	- -	3 (3)	6 (6)	3 (3)	16 (16)	60 (45)	84 (32)	127 (56)	295 (158)	523 (347)	2 (0)	- -	32 (22)	1151 (688)
	Other NE	- -	- -	- -	- -	- -	- -	- -	- -	2 (0)	- -	- -	- -	- -	2 (0)
	Total	3 3	27 (27)	62 (62)	90 (90)	165 (163)	506 (319)	610 (253)	969 (445)	1643 (958)	2307 (1620)	9 (5)	0 (0)	74 (50)	6465 (3995)
South East	Beaulieu	- -	- -	- -	- -	- -	- -	- -	2 (1)	- -	- -	- -	- -	- -	2 (1)
	Itchen (a)	- -	- -	(2) (2)	3 (3)	6 (6)	19 (19)	63 (62)	75 (74)	64 (62)	7 (7)	1 (1)	- -	- -	240 (236)
	Ouse (Sussex)	- -	- -	- -	- -	- -	- -	- -	- -	1 (0)	- -	- -	- -	- -	1 (0)
	Test (a)	1 (1)	- -	1 (1)	0 (0)	3 (3)	12 (12)	31 (31)	35 (35)	32 (32)	6 (6)	- -	- -	- -	121 (121)
	Total	1 (1)	0 (0)	3 (3)	3 (3)	9 (9)	31 (31)	94 (93)	112 (110)	97 (94)	13 (13)	1 (1)	0 (0)	0 (0)	364 (358)
South West	Avon (Devon)	- -	- -	- -	- -	- -	- -	1 (1)	- -	3 (3)	14 (12)	12 (11)	- -	- -	30 (27)
	Avon (Hants.)	- -	1 (1)	7 (7)	9 (9)	14 (14)	9 (9)	5 (5)	2 (2)	- -	- -	- -	- -	15 (15)	62 (62)
	Axe	- -	- -	- -	1 (1)	- -	2 (1)	4 (4)	2 (2)	3 (2)	10 (9)	- -	- -	- -	22 (19)
	Brit	- -	- -	- -	- -	- -	- -	- -	- -	- -	- -	- -	- -	- -	0 (0)
	Camel	- -	- -	- -	- -	2 (2)	11 (4)	15 (5)	34 (11)	20 (10)	33 (20)	37 (27)	17 (10)	- -	169 (89)
	Dart	- -	- -	1 (1)	4 (4)	6 (6)	12 (9)	24 (20)	30 (26)	29 (28)	13 (13)	- -	- -	- -	119 (107)
	Erme	- -	- -	- -	- -	- -	- -	1 (1)	- -	2 (1)	4 (1)	- -	- -	- -	7 (3)
	Exe	- -	2 (2)	1 (1)	3 (3)	16 (16)	70 (40)	103 (55)	102 (71)	122 (88)	20 (20)	- -	1 (1)	1 (0)	441 (297)
	Fal	- -	- -	- -	- -	- -	- -	- -	- -	- -	- -	- -	- -	- -	0 (0)
	Fowey	- -	- -	- -	1 (1)	- -	3 (2)	4 (0)	6 (4)	8 (3)	25 (14)	28 (23)	21 (14)	- -	96 (61)
	Frome	- -	- -	2 (2)	- -	8 (8)	10 (10)	10 (10)	16 (16)	2 (2)	1 (1)	1 (1)	- -	4 (4)	54 (54)
	Lyn	- -	- -	- -	- -	2 (2)	24 (15)	13 (7)	11 (8)	10 (9)	2 (2)	- -	- -	- -	62 (43)
	Lynher	- -	- -	- -	2 (2)	1 (1)	5 (1)	18 (14)	17 (9)	23 (19)	11 (11)	- -	3 (2)	- -	80 (59)
	Piddle	- -	- -	- -	1 (1)	1 (0)	- -	- -	- -	- -	- -	- -	- -	- -	2 (1)
	Plym	- -	- -	- -	- -	- -	1 (1)	- -	1 (0)	1 (0)	4 (3)	5 (3)	2 (2)	- -	14 (9)
	Tamar	- -	- -	1 (1)	1 (1)	18 (18)	50 (37)	87 (59)	65 (47)	92 (66)	17 (10)	3 (2)	- -	7 (3)	341 (244)
	Tavy	- -	- -	- -	- -	- -	9 (6)	17 (8)	9 (4)	15 (8)	17 (13)	- -	- -	1 (1)	68 (40)
	Taw	- -	- -	3 (3)	4 (4)	18 (18)	45 (29)	57 (38)	43 (27)	55 (39)	- -	- -	- -	- -	225 (158)
	Teign	- -	1 (1)	- -	3 (3)	11 (11)	11 (7)	24 (18)	26 (19)	30 (22)	17 (17)	- -	- -	- -	123 (98)
	Torridge	- -	- -	3 (3)	1 (1)	5 (5)	14 (11)	26 (19)	14 (8)	34 (31)	2 (2)	- -	- -	5 (3)	104 (83)
Yealm	- -	- -	- -	- -	- -	1 (0)	- -	1 (0)	- -	1 (1)	- -	3 (3)	- -	6 (4)	
Unknown SW	- -	- -	1 1	- -	- -	- -	- -	1 0	- -	- -	- -	- -	- -	2 (1)	
	Total	0 (0)	4 (4)	18 (18)	30 (30)	102 (101)	277 (182)	409 (264)	379 (254)	449 (331)	191 (149)	86 (67)	47 (32)	33 (26)	2027 (1459)

Section 6
Table 9 (continued)

Salmon Rod Catches (released totals in brackets) – 2012 Season

Environment Agency Region	River	Jan	Feb	Mar	Apr	May	Jun	Jul	Aug	Sep	Oct	Nov	Dec	Un-known	Total Number	
Midlands	Severn	-	-	4 (4)	17 (17)	19 (19)	33 (32)	38 (24)	41 (20)	37 (19)	48 (40)	10 (8)	-	1 (1)	1 (1)	249 (185)
	Trent	-	-	-	-	-	-	-	-	-	-	-	-	-	-	0 (0)
	Total	0 (0)	4 (4)	17 (17)	19 (19)	33 (32)	38 (24)	41 (20)	37 (19)	48 (40)	10 (8)	0 (0)	1 (1)	1 (1)	249 (185)	
Environment Agency Wales	Afan	-	-	-	-	-	-	-	6 (3)	3 (2)	6 (3)	-	-	-	15 (8)	
	Artro	-	-	-	-	-	-	-	1 (0)	-	-	-	-	-	1 (0)	
	Cleddau (E&W)	-	-	-	-	-	2 (2)	3 (2)	14 (5)	14 (8)	14 (6)	10 (4)	-	-	57 (27)	
	Clwyd	-	-	-	-	-	-	6 (3)	14 (7)	21 (15)	22 (15)	34 (31)	-	-	99 (73)	
	Corwy	-	-	-	-	-	3 (3)	10 (6)	20 (7)	29 (13)	43 (24)	27 (19)	2 (2)	-	141 (76)	
	Coron Lake Anglesea	-	-	-	-	-	-	-	-	-	-	-	-	-	0 (0)	
	Dee	-	-	-	11 (11)	3 (3)	18 (18)	46 (32)	92 (56)	129 (89)	249 (190)	164 (130)	-	-	716 (533)	
	Dwyfachr	-	-	-	-	-	-	-	-	-	-	-	-	-	0 (0)	
	Dwyfawr	-	-	-	-	-	-	-	1 (0)	1 (1)	5 (1)	3 (0)	-	-	10 (2)	
	Dwryyd	-	-	-	-	-	-	1 (0)	-	1 (0)	1 (0)	-	-	-	3 (0)	
	Dyfi/ Dovey	-	-	-	-	-	-	3 (1)	12 (4)	23 (2)	37 (12)	23 (9)	8 (7)	-	115 (40)	
	Glaslyn	-	-	-	-	-	1 (1)	9 (4)	3 (3)	7 (5)	3 (3)	3 (3)	-	-	26 (19)	
	Gwyrfa	-	-	-	-	-	-	-	-	1 (0)	-	2 (1)	-	-	3 (1)	
	Llyfni	-	-	-	-	-	-	-	-	-	3 (0)	-	-	-	3 (0)	
	Loughor	-	-	-	-	-	-	4 (1)	1 (0)	5 (1)	7 (3)	3 (1)	-	-	20 (6)	
	Mawddach	-	-	-	-	-	1 (1)	10 (2)	19 (9)	22 (10)	32 (22)	17 (16)	1 (0)	-	107 (65)	
	Neath	-	-	-	-	1 (1)	1 (1)	9 (5)	9 (1)	13 (2)	10 (5)	8 (4)	1 (0)	-	56 (23)	
	Nevern	-	-	-	-	-	-	1 (0)	2 (0)	8 (1)	8 (5)	2 (2)	-	-	22 (8)	
	Ogmore	-	-	-	-	-	2 (2)	7 (3)	8 (5)	9 (4)	11 (6)	6 (5)	-	-	43 (25)	
	Ogwen	-	-	-	1 (1)	-	-	6 (1)	11 (4)	16 (4)	21 (8)	22 (8)	-	-	78 (27)	
	Rheidol	-	-	-	-	-	-	-	2 (0)	1 (0)	7 (4)	12 (3)	-	-	22 (7)	
	Seiont	-	-	-	-	-	-	-	-	1 (0)	10 (2)	13 (3)	5 (5)	-	29 (10)	
	Taf	-	-	-	-	2 (1)	2 (2)	3 (0)	10 (1)	14 (4)	19 (5)	9 (4)	-	-	60 (18)	
	Taff	-	-	-	-	-	2 (2)	6 (5)	13 (12)	19 (19)	19 (19)	23 (23)	-	-	82 (80)	
	Tawe	-	-	-	-	1 (1)	-	4 (0)	7 (1)	17 (6)	15 (7)	21 (9)	-	-	65 (24)	
	Teifi	-	-	-	-	-	7 (7)	36 (16)	81 (30)	66 (32)	128 (57)	97 (57)	-	-	441 (207)	
	Tywi/ Towy	-	-	-	-	8 (8)	13 (13)	32 (12)	81 (27)	87 (29)	109 (32)	48 (32)	-	-	390 (154)	
Usk	-	-	-	5 (5)	6 (6)	27 (27)	228 (146)	289 (182)	207 (123)	161 (130)	132 (100)	-	-	1065 (725)		
Wye (a)	-	-	1 (1)	68 (68)	57 (57)	106 (105)	157 (149)	150 (148)	164 (160)	128 (127)	166 (160)	1 (0)	-	1034 (1011)		
Ystwyth	-	-	-	-	-	-	-	1 (0)	-	4 (0)	4 (1)	-	-	9 (1)		
Others	-	-	-	-	-	-	-	5 (3)	2 (2)	11 (3)	7 (5)	1 (1)	-	28 (16)		
Total		0 (0)	1 (1)	85 (85)	78 (77)	185 (184)	581 (388)	841 (505)	881 (533)	1069 (688)	855 (633)	19 (15)	0 (0)	120 (77)	4740 (3186)	

Salmon Rod Catches (released totals in brackets) – 2012 Season

Environment Agency Region	River	Jan	Feb	Mar	Apr	May	Jun	Jul	Aug	Sep	Oct	Nov	Dec	Un-known	Total Number														
NorthWest	Bela	-	-	-	-	-	-	2	(2)	5	(4)	4	(3)	1	(1)	-	-	12	(10)										
	Calder	-	-	-	-	-	-	-	-	12	(2)	9	(3)	24	(17)	-	-	45	(22)										
	Crake	-	-	-	-	-	-	-	-	6	(6)	7	(7)	12	(12)	-	-	25	(25)										
	Derwent	1	(1)	-	-	1	(1)	1	(1)	4	(4)	10	(6)	37	(18)	134	(38)	205	(98)	151	(127)	-	-	2	(1)	546	(295)		
	Duddon	-	-	-	-	-	-	-	-	1	(1)	6	(2)	8	(4)	24	(14)	18	(13)	-	-	-	-	-	-	-	57	(34)	
	Eden	4	(4)	4	(4)	36	(35)	38	(38)	70	(70)	61	(44)	112	(51)	202	(70)	273	(159)	142	(107)	1	(0)	-	-	-	-	943	(582)
	Ehen	-	-	-	-	-	-	1	(1)	-	-	8	(2)	27	(9)	60	(14)	82	(32)	70	(43)	-	-	-	-	-	-	248	(101)
	Ellen	-	-	-	-	-	-	-	-	-	-	2	(1)	5	(1)	4	(1)	5	(2)	-	-	-	-	-	-	-	-	16	(5)
	Esk (Border)	-	-	2	(2)	5	(5)	5	(5)	6	(6)	15	(6)	82	(19)	142	(44)	187	(109)	225	(173)	-	-	-	-	16	(12)	685	(381)
	Esk (Cumbrian)	-	-	-	-	-	-	-	-	-	-	7	(3)	21	(9)	10	(8)	-	-	-	-	-	-	-	-	-	-	38	(20)
	Irt	-	-	8	(8)	-	-	-	-	-	-	2	(1)	7	(2)	18	(5)	32	(17)	29	(12)	-	-	-	-	-	-	96	(45)
	Kent	-	-	-	-	-	-	3	(3)	4	(4)	16	(4)	29	(4)	76	(24)	60	(31)	66	(43)	-	-	-	-	-	-	254	(113)
	Leven	-	-	-	-	-	-	-	-	-	-	6	(6)	5	(5)	21	(21)	17	(17)	-	-	-	-	-	-	-	-	49	(49)
	Lune	-	-	1	(1)	2	(2)	2	(2)	11	(11)	27	(16)	38	(15)	124	(58)	204	(106)	236	(154)	-	-	-	-	1	(0)	646	(365)
	Ribble	-	-	1	(1)	9	(8)	13	(13)	10	(10)	49	(38)	92	(65)	173	(115)	245	(174)	327	(279)	1	(1)	1	(1)	17	(16)	938	(721)
	Wyre	-	-	-	-	-	-	-	-	-	-	-	-	1	(1)	10	(5)	-	-	-	-	-	-	-	-	-	-	11	(6)
	Total	5	(5)	16	(16)	53	(51)	63	(63)	105	(105)	189	(118)	440	(194)	977	(393)	1379	(785)	1343	(1013)	2	(1)	1	(1)	36	(29)	4609	(2774)
	Unknown Eng + Wls	-	-	-	-	-	-	-	-	1	(0)	-	-	-	-	-	-	-	-	-	-	-	-	-	-	-	1	(0)	
	England and Wales	6	(6)	25	(25)	176	(174)	193	(192)	434	(431)	1116	(743)	1825	(1076)	2386	(1309)	3042	(1938)	2412	(1816)	108	(84)	49	(34)	190	(133)	18455	11957
Notes:	Reported data from rod licence catch returns only, except where indicated. Totals includes all fish taken and all fish released. Released fish pre June as recorded on return forms. - Catches from tributaries and from minor rivers with a shared estuary are included under the appropriate main river.																												
Key:	(a) Figure quoted above is data from rod catch returns only. Catch data taken from a source other than rod licence returns, ie owners' returns, general licence returns etc. is not used in this table.																												

Section 6
Table 10

Sea Trout Rod Catches (released totals in brackets) – 2012 Season

Environment Agency Region	River	Jan	Feb	Mar	Apr	May	Jun	Jul	Aug	Sep	Oct	Nov	Dec	Un-known	Total Number	
North East	Aln	-	-	-	-	1 (1)	3 (1)	-	7 (4)	14 (10)	27 (22)	-	-	-	52 (38)	
	Coquet	-	-	5 (4)	12 (11)	15 (9)	60 (37)	101 (62)	89 (57)	85 (61)	139 (109)	-	-	2 (2)	508 (352)	
	Ouse (Yorks.)	-	-	-	7 (7)	17 (17)	10 (10)	20 (18)	4 (2)	3 (2)	3 (2)	-	-	-	64 (60)	
	Esk (Yorks.)	-	-	-	2 (2)	22 (4)	91 (35)	133 (67)	54 (28)	102 (69)	121 (70)	-	-	-	18 (0)	543 (275)
	Tees	-	-	-	-	4 (3)	2 (1)	2 (1)	3 (2)	30 (28)	13 (11)	-	-	-	-	54 (46)
	Tyne	-	2 (1)	3 (3)	14 (14)	31 (30)	129 (61)	253 (120)	306 (146)	357 (205)	257 (179)	1 (1)	-	-	26 (15)	1379 (775)
	Wear	-	-	2 (2)	3 (2)	55 (47)	245 (155)	389 (254)	330 (229)	248 (168)	124 (94)	1 (0)	-	-	30 (22)	1427 (973)
	Other	-	-	1 (1)	-	-	-	-	1 (1)	2 (2)	4 (1)	-	-	-	-	8 (5)
Total		0 (0)	2 (1)	11 (10)	38 (36)	145 (111)	540 (300)	898 (522)	794 (471)	841 (545)	688 (488)	2 (1)	0 (0)	76 (39)	4035 (2524)	
Anglian	Total	0 (0)	0 (0)	0 (0)	0 (0)	4 (3)	4 (2)	0 (0)	2 (2)	0 (0)	0 (0)	0 (0)	-	0 (0)	10 (7)	
South East (Formerly Southern and Thames)	Thames	-	-	-	-	-	-	-	-	-	-	-	-	-	0 (0)	
	Adur	-	-	-	-	-	-	-	-	1 (1)	-	-	-	-	1 (1)	
	Arun	-	-	-	-	-	-	-	-	-	-	-	-	-	0 (0)	
	Beaulieu	-	-	-	-	-	1 (1)	4 (2)	6 (6)	1 (0)	2 (2)	-	-	-	14 (11)	
	Itchen	-	-	-	18 (17)	29 (23)	66 (57)	58 (44)	105 (86)	88 (76)	33 (24)	-	-	-	12 (12)	409 (339)
	Lymington	-	-	-	-	-	2 (2)	4 (3)	4 (4)	11 (10)	11 (9)	-	-	-	-	32 (28)
	Ouse (Sussex)	-	-	-	-	1 (1)	12 (9)	16 (9)	22 (18)	15 (13)	10 (9)	1 (0)	-	-	-	77 (59)
	Rother (Eastern)	-	-	-	-	-	-	-	2 (1)	-	-	-	-	-	-	2 (1)
	Rother (Western)	-	-	-	-	-	-	7 (3)	2 (0)	2 (1)	7 (2)	-	-	-	-	18 (6)
	Test	7 (7)	3 (3)	10 (10)	16 (12)	19 (18)	31 (27)	20 (16)	28 (21)	23 (14)	3 (2)	-	-	-	-	160 (130)
	Others	-	-	1 (1)	7 (7)	-	1 (1)	-	-	2 (0)	-	3 (2)	-	-	-	14 (11)
Total		7 (7)	3 (3)	11 (11)	41 (36)	49 (42)	120 (100)	106 (75)	169 (136)	146 (116)	62 (48)	1 (0)	0 (0)	12 (12)	727 (586)	
South West	Avon (Devon)	-	-	-	-	4 (2)	12 (6)	10 (8)	29 (18)	14 (6)	8 (8)	3 (3)	-	-	80 (51)	
	Avon (Hants.)	-	-	-	1 (0)	19 (19)	18 (16)	3 (2)	12 (12)	44 (44)	29 (29)	-	-	1 (1)	127 (123)	
	Axe	-	-	-	13 (7)	52 (34)	70 (48)	58 (45)	57 (45)	46 (37)	30 (25)	-	-	-	19 (14)	345 (255)
	Camel	-	-	-	-	6 (2)	55 (32)	192 (145)	129 (98)	76 (74)	29 (29)	16 (16)	12 (12)	15 (15)	-	530 (423)
	Dart	-	-	-	7 (3)	56 (18)	17 (7)	78 (53)	60 (37)	42 (29)	-	1 (1)	-	-	-	261 (148)
	Erme	-	-	-	-	4 (2)	25 (20)	19 (15)	27 (25)	20 (17)	-	-	-	-	-	95 (79)
	Exe	-	1 (1)	-	-	-	1 (1)	4 (2)	2 (2)	4 (3)	-	-	-	-	-	12 (9)
	Fowey	-	-	-	51 (25)	43 (23)	102 (49)	193 (106)	192 (135)	68 (61)	34 (32)	15 (15)	17 (17)	10 (6)	-	725 (469)
	Frome	-	-	-	-	14 (12)	23 (18)	29 (19)	16 (10)	16 (5)	9 (9)	-	-	2 (2)	-	109 (75)
	Looe	-	-	-	-	-	14 (8)	-	1 (1)	-	-	-	-	-	-	15 (9)
	Lyn	-	-	-	1 (1)	1 (1)	2 (2)	6 (5)	8 (8)	21 (21)	-	-	-	-	-	39 (38)
	Lynher	-	-	2 (1)	75 (29)	19 (8)	53 (33)	95 (50)	95 (75)	26 (24)	3 (3)	-	-	-	-	368 (223)
	Otter	-	-	1 (1)	-	4 (2)	-	6 (5)	10 (10)	2 (2)	-	-	-	-	4 (4)	27 (24)
	Piddle	-	-	-	4 (4)	-	-	-	-	-	5 (5)	-	-	-	-	9 (9)
	Plym	-	-	-	25 (9)	19 (10)	26 (9)	12 (2)	16 (10)	3 (3)	1 (1)	-	-	2 (2)	-	104 (46)
	Stour (SW)	-	-	-	-	4 (4)	8 (8)	4 (4)	10 (10)	8 (8)	16 (16)	-	-	-	-	50 (50)
	Tamar	-	-	1 (1)	2 (1)	26 (19)	52 (27)	104 (77)	83 (55)	71 (49)	16 (15)	-	-	-	10 (4)	365 (248)
	Tavy	-	-	-	9 (7)	17 (5)	60 (39)	55 (41)	51 (28)	24 (11)	5 (5)	-	-	-	7 (2)	228 (138)
	Taw	-	-	-	13 (10)	13 (9)	73 (57)	110 (85)	90 (80)	52 (44)	-	-	-	-	6 (4)	357 (289)
	Teign	-	-	10 (7)	36 (12)	77 (28)	110 (55)	135 (80)	176 (135)	167 (139)	6 (6)	-	-	-	-	717 (462)
Torridge	-	-	-	6 (6)	9 (9)	41 (32)	47 (44)	26 (25)	34 (30)	-	-	-	-	1 (0)	164 (146)	
Yealm	-	-	-	-	3 (0)	12 (8)	9 (8)	11 (9)	6 (6)	5 (5)	3 (3)	4 (4)	-	-	53 (43)	
Others	-	-	2 (2)	9 (9)	11 (10)	8 (6)	24 (23)	10 (7)	2 (2)	3 (3)	-	-	-	-	69 (62)	
Total		1 (1)	1 (1)	16 (12)	252 (123)	401 (217)	782 (481)	1193 (819)	1111 (835)	751 (620)	194 (186)	38 (38)	35 (35)	75 (52)	4849 (3419)	
Midlands	Severn	-	-	-	-	2 (2)	8 (7)	6 (5)	1 (1)	1 (0)	-	-	-	-	18 (15)	
	Others	-	-	-	-	-	-	-	-	-	-	-	-	-	0 (0)	
	Total	0 (0)	0 (0)	0 (0)	0 (0)	2 (2)	8 (7)	6 (5)	1 (1)	1 (0)	1 (0)	0 (0)	0 (0)	0 (0)	18 (15)	

Section 6
Table 10 (continued)

Sea Trout Rod Catches (released totals in brackets) – 2012 Season

Environment Agency Region	River	Jan	Feb	Mar	Apr	May	Jun	Jul	Aug	Sep	Oct	Nov	Dec	Un-known	Total Number	
Environment Agency Wales	Aeron	-	-	-	4 (0)	16 (8)	54 (13)	135 (48)	72 (22)	24 (7)	8 (4)	-	-	-	313 (102)	
	Afan	-	-	-	1 (1)	2 (1)	21 (9)	13 (7)	51 (47)	24 (19)	18 (17)	-	-	-	130 (101)	
	Arthro	-	-	-	-	-	5 (4)	-	1 (1)	1 (0)	-	-	-	-	7 (5)	
	Cleddau (E&W)	-	-	-	-	17 (6)	101 (53)	105 (69)	77 (52)	13 (11)	2 (2)	-	-	-	41 (41)	356 (234)
	Clwyd	-	-	-	1 (0)	12 (12)	187 (160)	528 (434)	441 (356)	194 (164)	40 (38)	-	-	-	7 (6)	1410 (1170)
	Conwy	-	-	-	-	1 (1)	36 (29)	104 (79)	142 (120)	142 (120)	50 (29)	19 (14)	1 (1)	-	39 (35)	392 (308)
	Dee	-	-	-	3 (3)	12 (12)	38 (30)	142 (116)	117 (97)	97 (77)	42 (39)	1 (1)	-	-	15 (13)	467 (388)
	Dwyfach	-	-	-	-	-	-	-	1 (0)	2 (2)	6 (4)	-	-	-	-	9 (6)
	Dwyfawr	-	-	-	-	2 (2)	48 (19)	69 (42)	69 (50)	37 (22)	2 (2)	-	-	-	21 (21)	248 (158)
	Dwyrhyd	-	-	-	-	-	-	19 (14)	9 (4)	6 (1)	-	-	-	-	-	34 (19)
	Dyfi / Dovey	-	-	-	12 (11)	70 (54)	557 (360)	600 (393)	400 (332)	233 (211)	94 (93)	1 (1)	-	-	167 (155)	2134 (1610)
	Dysynni	-	-	5 (5)	10 (7)	23 (18)	67 (49)	89 (70)	93 (81)	37 (34)	7 (7)	-	-	-	40 (40)	371 (311)
	Glaslyn	-	-	49 (30)	122 (87)	90 (65)	73 (41)	54 (28)	28 (14)	38 (23)	-	-	-	-	1 (0)	455 (288)
	Gwendraeth Fach	-	-	-	-	2 (2)	1 (0)	13 (6)	3 (2)	2 (1)	-	-	-	-	-	21 (11)
	Gwendraeth Fawr	-	-	-	-	3 (3)	16 (11)	6 (4)	1 (0)	2 (2)	1 (1)	-	-	-	-	29 (21)
	Gwyrfai	-	-	-	-	-	-	-	2 (2)	2 (0)	1 (0)	-	-	-	-	5 (2)
	Llyfni	-	-	-	1 (1)	-	-	61 (55)	29 (13)	9 (4)	1 (1)	-	-	-	32 (23)	133 (97)
	Loughor	-	-	-	8 (4)	25 (17)	48 (25)	74 (33)	70 (57)	12 (7)	5 (5)	-	-	-	10 (4)	252 (152)
	Mawddach	-	-	-	1 (1)	5 (3)	61 (34)	191 (148)	134 (114)	66 (46)	3 (2)	-	-	-	61 (61)	522 (409)
	Neath	-	-	-	8 (3)	25 (17)	76 (50)	88 (64)	81 (60)	75 (53)	5 (5)	-	-	-	45 (42)	403 (294)
	Nevern	-	-	-	4 (0)	15 (6)	158 (67)	151 (93)	117 (64)	52 (35)	12 (6)	-	-	-	64 (30)	573 (301)
	Ogmore	-	-	3 (2)	18 (16)	55 (43)	150 (127)	188 (161)	171 (149)	83 (73)	18 (16)	-	-	-	-	686 (587)
	Ogwen	-	-	-	-	3 (0)	34 (20)	61 (41)	87 (57)	28 (17)	2 (2)	1 (0)	-	-	-	216 (137)
	Rheidol	-	-	-	38 (38)	28 (27)	52 (41)	96 (81)	108 (86)	64 (58)	30 (25)	-	-	-	12 (10)	428 (366)
	Rhymney	-	-	-	1 (0)	-	-	-	3 (3)	-	-	-	-	-	-	4 (3)
	Seiont	-	-	-	-	-	15 (9)	21 (12)	8 (3)	7 (1)	4 (0)	-	-	-	-	55 (25)
	Taf	-	-	-	1 (0)	8 (2)	51 (20)	75 (27)	55 (24)	27 (9)	9 (5)	-	-	-	12 (10)	238 (97)
	Taff	-	-	-	24 (23)	20 (20)	22 (22)	31 (31)	14 (14)	11 (11)	4 (4)	-	-	-	-	126 (125)
	Tawe	-	-	-	2 (0)	5 (1)	16 (10)	27 (21)	49 (35)	30 (27)	9 (8)	-	-	-	1 (0)	139 (102)
	Teifi	-	-	-	12 (9)	152 (82)	407 (252)	609 (418)	391 (305)	170 (152)	96 (89)	-	-	1 (0)	107 (55)	1945 (1362)
Tywi / Towy	-	-	2 (0)	48 (28)	126 (71)	540 (271)	498 (284)	353 (183)	228 (178)	56 (50)	2 (0)	-	-	181 (123)	2034 (1188)	
Usk	-	-	1 (1)	1 (1)	13 (12)	14 (11)	42 (34)	26 (20)	25 (22)	8 (8)	-	-	-	2 (2)	132 (111)	
Wye	-	-	3 (3)	12 (12)	7 (7)	11 (10)	12 (11)	4 (4)	5 (4)	-	-	-	-	-	54 (51)	
Ystwyth	-	-	-	-	2 (2)	43 (24)	66 (53)	22 (15)	37 (34)	1 (1)	-	-	-	-	171 (129)	
Others	-	-	-	-	1 (1)	11 (4)	25 (11)	34 (26)	10 (5)	5 (1)	2 (2)	-	-	-	88 (50)	
Total	0 (0)	0 (0)	63 (41)	332 (245)	740 (495)	2913 (1775)	4196 (2890)	3264 (2412)	1704 (1341)	501 (445)	8 (5)	1 (0)	858 (671)	14580 (10320)		
Unknown Eng +WIs	Total	-	-	-	-	-	-	3 (3)	-	-	-	-	-	-	3 (3)	

Section 6
Table 10 (continued)

Sea Trout Rod Catches (released totals in brackets) – 2012 Season

Environment Agency Region	River	Jan	Feb	Mar	Apr	May	Jun	Jul	Aug	Sep	Oct	Nov	Dec	Un-known	Total Number	
North West	Calder	-	-	-	1 (1)	8 (8)	1 (0)	2 (1)	4 (3)	3 (2)	2 (2)	-	-	-	21 (17)	
	Crake	-	-	-	-	-	-	4 (3)	-	13 (13)	1 (1)	-	-	-	18 (17)	
	Derwent	-	-	1 (0)	1 (1)	11 (11)	45 (43)	79 (66)	51 (46)	60 (55)	14 (11)	-	-	-	1 (0)	263 (233)
	Duddon	-	-	-	-	1 (0)	15 (7)	40 (25)	34 (27)	20 (19)	2 (2)	-	-	-	1 (0)	113 (80)
	Eden (NW)	1 (0)	1 (1)	-	3 (2)	30 (24)	46 (31)	32 (19)	64 (59)	28 (24)	7 (6)	-	-	-	5 (0)	217 (166)
	Ehen	-	-	-	-	-	84 (75)	140 (131)	237 (188)	51 (43)	27 (26)	-	-	-	3 (3)	542 (466)
	Ellen	-	-	-	-	-	13 (12)	90 (72)	48 (29)	33 (28)	18 (18)	-	-	-	-	202 (159)
	Esk (Border)	-	-	-	1 (1)	41 (29)	407 (230)	376 (229)	229 (181)	76 (64)	51 (48)	-	-	-	18 (17)	1199 (799)
	Esk (Cumbrian)	-	-	-	-	-	15 (13)	86 (68)	100 (86)	25 (22)	4 (4)	-	-	-	-	230 (193)
	Irt	-	-	-	-	-	17 (13)	78 (66)	113 (86)	58 (50)	12 (12)	-	-	-	-	278 (227)
	Keer	-	-	-	-	-	-	-	-	-	-	-	-	-	-	0 (0)
	Kent	-	-	-	6 (6)	21 (8)	113 (66)	150 (102)	166 (126)	49 (39)	28 (28)	-	-	-	1 (1)	534 (376)
	Leven	-	-	-	-	2 (2)	5 (4)	15 (5)	21 (16)	11 (11)	-	-	-	-	1 (0)	55 (38)
	Lune	-	-	-	2 (2)	54 (42)	273 (180)	397 (308)	209 (171)	144 (112)	46 (41)	-	-	-	12 (11)	1137 (867)
	Ribble	-	-	4 (4)	21 (19)	86 (81)	295 (214)	545 (429)	399 (333)	181 (135)	52 (48)	-	-	-	18 (14)	1601 (1277)
	Wyre (NW)	-	-	-	2 (0)	1 (1)	3 (3)	7 (5)	14 (7)	21 (18)	3 (3)	1 (0)	-	-	-	52 (37)
	Others	-	-	-	-	-	-	6 (5)	-	4 (4)	-	-	-	-	4 (4)	14 (13)
	Total	1 (0)	1 (1)	5 (4)	37 (32)	255 (206)	1332 (891)	2047 (1534)	1689 (1358)	777 (639)	267 (250)	1 (0)	0 (0)	64 (50)	6476 (4965)	
Grand Total England and Wales		9 (8)	7 (6)	106 (78)	700 (472)	1592 (1073)	5695 (3554)	8446 (5845)	7028 (5213)	4220 (3261)	1712 (1417)	50 (44)	36 (35)	1085 (824)	30698 (21839)	
Notes: Reported data from rod licence catch returns only. Totals Includes all fish taken and all fish released.																
Catches from tributaries and from minor rivers with a shared estuary are included under the appropriate main river. The catch from remaining rivers in each region is aggregated and recorded under 'others'.																

Section 6

Table 11 Rod Caught Salmon & Sea Trout, Average Weight (Kg)- 2012 Season

Environment Agency Region	River	Salmon			Sea trout		
		Total catch	Total est. wt. (kg)	Ave. wt. (kg)	Total catch	Total est. wt. (kg)	Ave. wt. (kg)
North East	Coquet	787	2830	3.60	508	708	1.39
	Esk (Yorks.)	126	423	3.35	543	840	1.55
	Tees	211	1006	4.77	56	47	0.85
	Tyne	4006	19200	4.79	1379	2414	1.75
	Wear	1151	4951	4.30	1427	2698	1.89
Southern	Itchen	240	810	3.37	409	438	1.07
	Test	121	453	3.74	160	239	1.50
South West	Avon (Devon)	30	99	3.30	80	68	1.17
	Avon (Hants.)	57	339	5.95	127	70	1.81
	Axe	22	88	4.01	345	434	0.79
	Camel	169	588	3.48	530	264	2.00
	Dart	119	492	4.14	261	308	0.85
	Exe	441	1516	3.44	12	11	1.10
	Fowey	96	302	3.15	725	494	1.47
	Frome	54	292	5.41	109	155	0.70
	Lyn	62	188	3.04	39	26	1.53
	Lynher	80	283	3.53	368	259	1.42
	Tamar	341	1248	3.66	365	246	1.48
	Tavy	68	273	4.02	228	158	1.45
	Taw	225	915	4.06	357	278	1.29
	Teign	123	432	3.51	717	571	1.26
	Torridge	104	417	4.01	164	144	1.14
Midlands	Severn	249	1324	5.32	18	12	0.66
Environment Agency Wales	Aeron	10	37	3.68	313	173	0.55
	Cleddau	57	199	3.49	356	200	0.56
	Clwyd	99	374	3.78	1410	778	0.55
	Conwy	141	502	3.56	392	273	0.70
	Dee	716	3310	4.62	467	287	0.61
	Dyfi / Dovey	115	442	3.84	2134	2137	1.00
	Glaslyn	26	96	3.69	455	291	0.64
	Mawddach	107	396	3.70	522	422	0.81
	Nevern	22	91	4.16	573	347	0.61
	Ogmore	43	141	3.28	686	498	0.73
	Ogwen	78	211	2.71	216	135	0.62
	Rheidol	22	72	3.27	428	259	0.61
	Taf	60	229	3.82	238	204	0.86
	Taff	82	291	3.55	126	87	0.69
	Tawe	65	255	3.92	139	117	0.84
	Teifi	441	1761	3.99	1945	1238	0.64
	Tywi / Towy	390	1618	4.15	2034	2383	1.17
Usk	1065	5136	4.82	132	90	0.69	
Wye	1034	5640	5.45	54	38	0.70	
North West	Derwent	546	2327	4.26	263	181	0.69
	Eden (NW)	943	4471	4.74	217	161	0.74
	Ehen	248	774	3.12	542	331	0.61
	Ellen	16	47	2.92	202	114	0.56
	Esk (Border)	685	3027	4.42	1199	939	0.78
	Esk (Cumbria)	38	127	3.33	230	128	0.56
	Kent	254	870	3.43	534	426	0.80
	Lune	646	2878	4.46	1137	839	0.74
Ribble	938	4161	4.44	1601	1256	0.78	
Notes:	<p>Only those fish with associated weights are included All data taken from rod licence returns including rivers Test, Itchen and Wye Total Weights calculated to nearest whole kg Catches from tributaries and from minor rivers with a shared estuary are included under the appropriate main river.</p>						

Section 6

Table 12

Number of rod caught salmon in weight categories (lb & kg) - 2012 Season

Environment Agency Region	River	0-8 lb (0-3.6 kg)	8-14 lb (3.6-6.4 kg)	14-22 lb (6.4-10 kg)	>22 lb (>10 kg)
North East	Coquet	481	269	34	3
	Esk (Yorkshire)	81	37	8	0
	Tees	70	107	30	4
	Tyne	1303	1997	662	44
	Wear	510	492	142	7
	Others	54	97	29	4
South East So and Th	Itchen	171	57	12	0
	Test	80	30	10	1
	Others	3	0	0	0
South West	Avon. Devon	21	8	1	0
	Avon. Hants	9	28	18	2
	Axe	11	9	2	0
	Camel	107	57	5	0
	Dart	50	64	5	0
	Exe	287	145	9	0
	Fowey	71	24	1	0
	Frome	15	20	19	0
	Lyn	46	16	0	0
	Lynher	44	35	1	0
	Tamar	186	144	11	0
	Tavy	30	33	5	0
	Taw	99	110	16	0
	Teign	72	49	2	0
	Torridge	52	47	4	1
	Others	19	11	1	0
Midlands	Severn	47	143	54	5
	Others	0	0	0	0
Environment Agency Wales	Aeron	5	5	0	0
	Cleddau	54	42	3	0
	Clwyd	85	49	6	1
	Conwy	250	358	102	6
	Dee	58	47	10	0
	Dyfi / Dovey	38	16	3	0
	Glaslyn	11	15	0	0
	Mawddach	63	36	8	0
	Nevern	10	10	2	0
	Ogmore	30	12	1	0
	Ogwen	65	13	0	0
	Rheidol	14	8	0	0
	Taf	28	31	1	0
	Taff	53	23	6	0
	Tawe	35	25	5	0
	Teifi	208	215	17	1
	Tywi / Towy	157	205	28	0
Usk	313	585	152	15	
Wye	215	552	237	30	
Others	99	73	4	0	
North West	Derwent	254	220	66	6
	Eden (NW)	339	421	169	14
	Ehen	179	65	4	0
	Ellen	13	3	0	0
	Esk (Border)	291	302	84	8
	Esk (Cumbrian)	26	10	2	0
	Kent	154	91	9	0
	Lune	258	291	93	4
	Ribble	401	394	135	8
	Others	219	63	13	0
Notes:	Only those fish with associated weights are included All data taken from rod licence returns Catches from tributaries and from minor rivers with a shared estuary are included under the appropriate main river.				

Section 6

Table 13

Number of rod caught sea trout in weight categories (lb & kg)- 2012 Season

Environment Agency Region	River	0-1 lb (0-0.45 kg)	1-4 lb (0.45-1.8 kg)	>4 lb (>1.8 kg)
North East	Coquet	161	219	128
	Esk (Yorkshire)	59	339	145
	Tees	35	14	7
	Tyne	176	727	476
	Wear	206	615	606
	Others	58	48	18
	Southern	Beaulieu	4	7
Itchen		202	139	68
Lymington		17	9	6
Ouse (Sussex)		8	19	50
Test		28	92	40
Others		10	12	13
South West	Avon. Devon	31	43	6
	Avon. Hants	100	22	5
	Axe	118	157	70
	Camel	435	91	4
	Dart	68	154	39
	Exe	5	6	1
	Fowey	448	253	24
	Frome	49	28	32
	Lyn	36	2	1
	Lynher	222	135	11
	Tamar	223	132	10
	Tavy	153	64	11
	Taw	223	112	22
	Teign	366	312	39
	Torridge	93	55	16
	Others	223	165	34
Midlands	Severn	10	8	0
	Others	0	0	0
Environment Agency Wales	Aeron	212	93	8
	Cleddau	1069	309	32
	Clwyd	238	139	15
	Conwy	303	152	12
	Dee	1097	748	289
	Dyfi / Dovey	242	107	7
	Glaslyn	337	91	27
	Mawddach	296	190	36
	Nevern	378	171	24
	Ogmore	464	177	45
	Ogwen	141	71	4
	Rheidol	306	105	17
	Taf	91	128	19
	Taff	70	53	3
	Tawe	90	31	18
	Teifi	1374	496	75
	Tywi / Towy	869	747	418
	Usk	88	39	5
Wye	37	16	1	
Others	1101	680	179	
North West	Derwent	146	112	5
	Eden (NW)	128	81	8
	Ehen	385	141	16
	Ellen	148	51	3
	Esk (Border)	528	633	38
	Esk (Cumbrian)	186	40	4
	Kent	312	179	43
	Lune	594	513	30
	Ribble	833	700	68
Others	414	123	14	
Notes:	Only those fish with associated weights are included All data taken from rod licence returns. Catches from tributaries and from minor rivers with a shared estuary are included under the appropriate main river.			

Section 6
Table 18

Reported Net Effort data for Salmon & Sea Trout – 2012 Season

Environment Agency Region	River/ Fishery	Fishing Method	No. Lics.	Days available (a)	Allowable effort (b) net days (NE)/tides (other)	Utilised effort		% utilised	Average day (NE)/tide (other) per licence	Catch Salmon	Salmon catch per lic.day (NE)/ tide (other)	Catch Sea trout	Sea trout catch per lic. day (NE)/ tide (other)
						net days	net tides (other)						
North East Northumbria	Coastal (N)	Drift	9 (c)	66	594	472		79	52	0	0.00	0	0.00
		T nets	26 (c)	113	2938	516		18	20	0	0.00	0	0.00
	Coastal (S)	Drift nets	0	66	0	0		0	0	0	0.00	0	0.00
		T nets	1	113	113	0		0	0	0	0.00	0	0.00
		Drift nets	2	66	132	78		59	39	556	7.13	789	10.12
North East Yorkshire	Coastal	T or J nets	35	113	3955	1260		32	36	262	0.21	8290	6.58
Anglian	Coastal	Drift nets	20	130	2600	208	221	9	11	0	0.00	356	1.61
		Other nets (var.)	5	130	650	74	105	16	21	2	0.02	45	0.43
South West	Avon + Stour, (Christchurch)	Seine nets	0	0	0	0	0	0	0	0	0.00	0	0.00
	Poole Harbour	Seine net	1	45	45	17	16	36	16	0	0.00	0	0.00
	Exe	Seine nets	3	55	165	111	78	47	26	97	1.24	1	0.01
	Teign	Seine nets	3	121	363	96	108	30	36	75	0.69	138	1.28
	Dart	Seine nets	2	100	200	73	132	66	66	11	0.08	32	0.24
	Camel	Drift nets	6	66	396	40	39	10	7	27	0.69	1	0.00
	Tavy	Seine nets	1	66	66	0	-	-	-	0	-	0	-
	Tamar	Seine nets	0	66	0	0	-	-	-	0	-	0	-
	Lynher	Seine nets	0	66	0	0	-	-	-	0	-	0	-
	Fowey	Seine nets	0	131	0	0	-	-	-	0	-	0	-
	Taw/Torrige	Seine nets	3	45	135	58	65	48	22	47	0.72	98	1.51
Midlands	Severn	Seine nets	1	66	66	0	0	0	0	0	0.00	0	0.00
		Lave nets	30 (e)	66	1980	377	387	20	13	82	0.21	0	0.00
		Fixed Engines	4 (f)	76	304	198	236	78	59	128	0.54	2	0.01
Environment Agency Wales	Wye	Lave nets	7	66	462	208	271	4	39	7	0.03	0	0.00
	Tywi	Seine nets	3	110	330	266	378	115	126	30	0.08	399	1.06
		Coracle nets	7	110	770	208	213	28	30	21	0.10	515	2.42
		Taf	Wade net	1	45	45	7	7	16	7	0	0.00	0
	E+W, Cleddau	Coracle net	1	110	110	0	0	0	0	0	0.00	0	0.00
		Compass nets	6	66	396	71	76	19	13	2	0.03	0	0.00
	Teifi	Seine nets	2	109	218	40	43	20	22	0	0.00	56	1.30
		Coracle nets	12	109	1308	314	310	24	26	30	0.10	375	1.21
	Dyfi	Seine nets	2	109	218	72	73	33	37	0	0.00	17	0.23
	Dysynni	Seine net	1	66	66	16	16	24	16	0	0.00	8	0.00
	Mawddach	Seine nets	2	66	132	22	27	20	14	0	0.00	0	0.00
	Glaslyn	Seine nets	0	66	0	0	0	0	0	0	0.00	0	0.00
	Conwy	Basket trap	0	92	0	0	0	0	0	0	0.00	0	0.00
		Seine nets	3	66	198	37	38	19	13	16	0.42	5	0.13
	Nevern	Seine nets	1	66	66	17	17	26	17	0	0.00	15	0.00
North West (e)	Ribble	Drift nets	4	66	264	71	72	27	18	53	0.74	2	0.03
	Lune	Haaf nets	12	66	792	402	498	63	42	55	0.11	90	0.18
		Drift nets	7	66	462	147	149	32	21	102	0.68	15	0.10
		Seine net	0	66	0	0	0	-	-	0	0.00	0	0.00
		Lave nets	4	66	264	74	74	28	19	6	0.08	4	0.05
	Leven	Lave nets	2	44	88	51	57	65	29	1	0.02	0	0.00
	S&W Cumbria	Drift nets	-	-	-	0	-	-	-	-	-	0	-
	Solway?	Eden + Esk	Haaf nets	58	73	4234	1446	1644	39	28	349	0.21	260
Eden		Coop nets	3	66	198	77	189	95	63	11	0.06	2	0.01

Key:
(a) Days available is the total of the open season minus weekly closure periods. Part days included as full days - voluntary closure or buy-outs not taken into account
(b) Allowable effort is number of licences X available days for NE fisheries. Allowable effort for other fisheries is number of licences X available days X 1.4 tides.
(c) Separate licences for drift and T nets were issued for the first time in the northern area in 1993.
(d) Catches included under Tavy and Tamar as appropriate.
(e) Figures for half- and full-season lave nets combined.
(f) Assume all effort utilised
nr = not recorded

Section 6
Table 19

Reported Rod Effort Data for Salmon & Sea Trout – 2012 Season

Environment Agency Region	River	Number of returns with effort data	Number of days fished	Number of days fished per return	(a) Number of salmon and grilse recorded	Catch per licence day	(a) Number of sea trout recorded	Catch per licence day	Days to catch a salmonid	
North East	Aln	37.00	450.00	12.16	22.00	0.05	52.00	0.12	6.08	
	Coquet	434.00	5,017.00	11.56	755.00	0.15	501.00	0.10	3.99	
	Tyne	2,359.00	19,022.00	8.06	3,564.00	0.19	1,216.00	0.06	3.98	
	Wear	635.00	9,514.00	14.98	1,092.00	0.11	1,294.00	0.14	3.99	
	Tees	184.00	1,688.00	9.17	179.00	0.11	52.00	0.03	7.31	
	Esk (Yorks.)	198.00	1,887.00	9.53	110.00	0.06	514.00	0.27	3.02	
	Ouse (Yorks.)	110.00	651.00	5.92	152.00	0.23	63.00	0.10	3.03	
South East (Formerly Thames and Southern)	Thames	0.00	0.00	0.00	0.00	0.00	0.00	0.00	0.00	
	Test	160.00	659.00	4.12	117.00	0.18	149.00	0.23	2.48	
	Itchen	170.00	860.00	5.06	223.00	0.26	395.00	0.46	1.39	
	Beaulieu	21.00	86.00	4.10	2.00	0.02	14.00	0.16	5.38	
	Ouse (Sussex)	42.00	376.00	8.95	1.00	0.00	74.00	0.20	5.01	
	Adur	7.00	19.00	2.71	0.00	0.00	1.00	0.05	19.00	
	Lymington	14.00	148.00	10.57	0.00	0.00	32.00	0.22	4.63	
Great Ouse	0.00	0.00	0.00	0.00	0.00	0.00	0.00	0.00		
South West	Avon (Hants.)	172.00	1,128.00	6.56	54.00	0.05	122.00	0.11	6.41	
	Stour (Hants.)	11.00	79.00	7.18	0.00	0.00	50.00	0.63	1.58	
	Piddle	5.00	89.00	17.80	2.00	0.02	4.00	0.04	14.83	
	Frome	79.00	514.00	6.51	54.00	0.11	108.00	0.21	3.17	
	Axe	116.00	873.00	7.53	22.00	0.03	328.00	0.38	2.49	
	Otter	24.00	151.00	6.29	0.00	0.00	20.00	0.13	7.55	
	Exe	258.00	2,309.00	8.95	438.00	0.19	11.00	0.00	5.14	
	Teign	127.00	1,424.00	11.21	121.00	0.08	602.00	0.42	1.97	
	Dart	129.00	1,132.00	8.78	102.00	0.09	234.00	0.21	3.37	
	Avon (Devon)	60.00	416.00	6.93	25.00	0.06	71.00	0.17	4.33	
	Erme	16.00	155.00	9.69	4.00	0.03	88.00	0.57	1.68	
	Yealm	12.00	123.00	10.25	6.00	0.05	53.00	0.43	2.08	
	Plym	28.00	355.00	12.68	13.00	0.04	67.00	0.19	4.44	
	Tavy	63.00	711.00	11.29	66.00	0.09	213.00	0.30	2.55	
	Tamar	288.00	1,621.00	5.63	272.00	0.17	304.00	0.19	2.81	
	Lynher	67.00	960.00	14.33	78.00	0.08	335.00	0.35	2.32	
	Looe	5.00	50.00	10.00	0.00	0.00	15.00	0.30	3.33	
	Fowey	233.00	2,155.00	9.25	94.00	0.04	683.00	0.32	2.77	
	Camel	261.00	2,971.00	11.38	142.00	0.05	500.00	0.17	4.63	
	Taw	275.00	2,139.00	7.78	209.00	0.10	345.00	0.16	3.86	
	Torridge	141.00	849.00	6.02	104.00	0.12	159.00	0.19	3.23	
	Lyn	71.00	278.00	3.92	49.00	0.18	39.00	0.14	3.16	
Midlands	Severn	285.00	3,477.00	12.20	220.00	0.06	18.00	0.01	14.61	
Environment Agency Wales	Wye	764.00	5,298.00	6.93	971.00	0.18	50.00	0.01	5.19	
	Usk	542.00	5,236.00	9.66	909.00	0.17	111.00	0.02	5.13	
	Taff	37.00	757.00	20.46	74.00	0.10	104.00	0.14	4.25	
	Rhymney	2.00	7.00	3.50	0.00	0.00	4.00	0.57	1.75	
	Ogmore	91.00	1,575.00	17.31	37.00	0.02	647.00	0.41	2.30	
	Afan	33.00	524.00	15.88	13.00	0.02	128.00	0.24	3.72	
	Neath	82.00	1,287.00	15.70	45.00	0.03	351.00	0.27	3.25	
	Tawe	83.00	1,382.00	16.65	43.00	0.03	128.00	0.09	8.08	
	Loughor	73.00	1,065.00	14.59	15.00	0.01	203.00	0.19	4.89	
	Gwendraeth	5.00	100.00	20.00	2.00	0.02	44.00	0.44	2.17	
	Tywi	879.00	11,321.00	12.88	291.00	0.03	1,676.00	0.15	5.76	
	Taf	96.00	1,523.00	15.86	56.00	0.04	207.00	0.14	5.79	
	E&W Cleddau	116.00	2,173.00	18.73	51.00	0.02	294.00	0.14	6.30	
	NeVERN	76.00	1,083.00	14.25	19.00	0.02	531.00	0.49	1.97	
	Teifi	600.00	7,404.00	12.34	389.00	0.05	1,795.00	0.24	3.39	
	Aeron	30.00	517.00	17.23	7.00	0.01	269.00	0.52	1.87	
	Ystwyth	43.00	438.00	10.19	9.00	0.02	168.00	0.38	2.47	
	Rheidol	52.00	878.00	16.88	20.00	0.02	387.00	0.44	2.16	
	Dyfi	228.00	1,977.00	8.67	102.00	0.05	1,871.00	0.95	1.00	
	Dysynni	66.00	607.00	9.20	4.00	0.01	299.00	0.49	2.00	
	Mawddach	134.00	1,488.00	11.10	72.00	0.05	471.00	0.32	2.74	
	Arro	9.00	64.00	7.11	1.00	0.02	7.00	0.11	8.00	
	Dwyrnd	9.00	120.00	13.33	3.00	0.03	34.00	0.28	3.24	
	Glaslyn	41.00	629.00	15.34	26.00	0.04	438.00	0.70	1.36	
	Dwyfawr	43.00	458.00	10.65	8.00	0.02	199.00	0.43	2.21	
	Llyfni	14.00	157.00	11.21	3.00	0.02	97.00	0.62	1.57	
	Gwyrffai	4.00	20.00	5.00	2.00	0.10	4.00	0.20	3.33	
	Seiont	37.00	686.00	18.54	21.00	0.03	43.00	0.06	10.72	
	Ogwen	50.00	705.00	14.10	66.00	0.09	209.00	0.30	2.56	
	Conwy	187.00	1,916.00	10.25	98.00	0.05	340.00	0.18	4.37	
	Clwyd	210.00	2,063.00	9.82	78.00	0.04	1,331.00	0.65	1.46	
	Dee	805.00	9,096.00	11.30	624.00	0.07	388.00	0.04	8.99	
	North West	Ribble	1,003.00	10,833.00	10.80	870.00	0.08	1,485.00	0.14	4.60
		Wyre	35.00	245.00	7.00	11.00	0.04	45.00	0.18	4.38
		Lune	670.00	6,689.00	9.98	622.00	0.09	1,077.00	0.16	3.94
Kent		286.00	3,172.00	11.09	195.00	0.06	439.00	0.14	5.00	
Leven		39.00	360.00	9.23	45.00	0.13	50.00	0.14	3.79	
Duddon		51.00	410.00	8.04	57.00	0.14	113.00	0.28	2.41	
Esk (Cumbrian)		86.00	564.00	6.56	38.00	0.07	230.00	0.41	2.10	
Irt		88.00	927.00	10.53	86.00	0.09	277.00	0.30	2.55	
Calder		28.00	316.00	11.29	45.00	0.14	20.00	0.06	4.86	
Ehen		160.00	3,509.00	21.93	232.00	0.07	512.00	0.15	4.72	
Derwent		419.00	4,907.00	11.71	486.00	0.10	259.00	0.05	6.59	
Ellen		28.00	433.00	15.46	15.00	0.03	202.00	0.47	2.00	
Eden		833.00	9,763.00	11.72	864.00	0.09	211.00	0.02	9.08	
Esk (Border)		508.00	4,041.00	7.95	606.00	0.15	1,098.00	0.27	2.37	

Notes: Effort data is reported for both salmon and sea trout and can not be separated. (a)The table includes only returns upon which the number of days fished were reported. Some returns contained data for two or more rivers.

Section 6
Table 20

Estimated Proportions of Grilse &
Multi- Sea Winter (MSW) Salmon in Declared Rod Catch – 2012 Season

Environment Agency Region	River	Number of grilse	% grilse	Number of MSW	% MSW
North East	Coquet	497	63	287	37
	Tyne	1659	44	2104	56
	Wear	642	60	434	40
Southern	Test	76	65	41	35
	Itchen	167	70	73	30
South West	Frome	11	24	34	76
	Exe	259	59	178	41
	Teign	69	56	54	44
	Dart	56	49	59	51
	Tavy	31	53	28	47
	Tamar	166	54	141	46
	Lynher	47	59	33	41
	Fowey	80	84	15	16
	Camel	120	74	43	26
	Taw	92	41	131	59
	Torrige	41	45	50	55
	Lyn	35	61	22	39
Midlands	Severn	57	24	176	76
Environment Agency Wales	Wye	239	25	728	75
	Usk	318	31	696	69
	Ogmore	25	64	14	36
	Tawe	46	66	24	34
	Tywi	181	51	175	49
	Taf	32	63	19	37
	E&W Cleddau	38	66	20	34
	Teifi	244	60	165	40
	Dyfi	70	67	34	33
	Mawddach	67	65	36	35
	Ogwen	67	86	11	14
	Conwy	93	69	41	31
	Dee	310	46	361	54
North West	Ribble	502	56	397	44
	Lune	348	56	276	44
	Kent	187	73	69	27
	Leven	33	73	12	27
	Irt	73	76	23	24
	Ehen	198	83	42	18
	Derwent	319	60	212	40
	Eden	414	45	511	55
	Esk (Border)	358	55	290	45
Total		18007	78	5158	22
Notes:	The grilse/MSW split is attributed only to fish with a declared capture date and weight The splitting model uses monthly age-weight data collected from the fish trap on the River Dee, Wales				

Section 6
Table 21

Salmon Stocking – number of eggs, fry, parr and smolts released - 2012

Environment			Unfed	Fed	0+	1+	1+	2+
Agency Region	River	Tributary	Ova	Fry	Fry	Parr	Parr	Smolts
North East	MainTyne	Main river (plus var. tribs.)	0	0	0	0	0	0
	South Tyne	Main River (plus var. tribs.)	0	0	0	8,500	0	0
	North Tyne	Main River (tribs + Kielder Burn)	0	0	0	37,500	0	0
	Rede	Main River (plus var. tribs.)	0	0	0	0	0	0
	Esk (Yorks.)		0	0	0	0	0	0
	Total		0	0	0	46,000	0	0
Thames	Thames	Main River	0	0	0	0	0	0
		Kennet	0	0	0	0	0	0
	Total		0	0	0	0	0	0
Southern	Itchen (Egg box)		0	0	0	0	0	0
	Total		0	0	0	0	0	0
South West	Lynher		0	0	35,000	0	0	0
	Axe		0	0	0	10,000	0	0
	Tamar		0	0	52,712	0	0	0
	Haddeo		0	0	0	0	0	0
	Lowman		0	0	0	0	0	0
	Torridge		0	26,540	0	0	0	0
	Camel (plus tribs.)		0	0	16,000	0	0	0
	Total		0	26,540	0	103,712	0	10,000
Midlands	Severn	Teme	0	0	0	0	0	0
		Tanat	0	0	0	40,400	0	0
		Clun	0	0	0	0	0	0
		Rea	0	0	0	0	0	0
		Leadon	0	0	0	0	0	0
		Main River	0	0	0	44,200	0	0
	Wye	Lugg	0	0	0	150	0	0
	Trent	Dove	0	0	0	120,000	0	0
		Dove (River Churnet)	0	0	0	20,000	0	0
	Total		0	0	0	224,750	0	0
Environment Agency Wales	Taff		0	0	0	84,200	0	0
	Ely		0	0	0	0	0	0
	Ebbw		0	0	0	0	0	0
	Teifi		0	0	0	0	0	0
	Afan		0	0	0	0	0	0
	Taf		0	0	0	0	0	0
	Wye	Main river	0	0	0	110,000	0	82
	Tywi	Main river + Cothi and Gwili	0	0	0	0	0	0
	Eastern Cleddau		0	0	0	0	0	0
	Rheidol		0	0	0	0	0	0
	Seiont		0	0	0	14,800	0	0
	Conwy	Main river, Lledr + Llugwy	0	0	0	0	0	0
	Mawddach	Main river, Eden and Wnion	0	0	0	20,000	0	0
	Dee	Main river (plus var. tribs.)	0	0	0	90,000	0	0
		Total		0	0	0	319,000	0
North West	Ribble	Hodder	0	0	0	20,000	0	0
	Leven		0	0	0	0	0	0
	Lune	Main River (plus var. tribs.)	0	0	0	0	0	0
	Total		0	0	0	20,000	0	0
England and Wales			0	26,540	103,712	619,750	0	82
<p>Notes:</p> <p>1+ Parr are those stocked out on or after 1st January in the year after they hatched.</p> <p>1+ Smolts are those stocked out on or after 1st January in the 1st year after they hatched.</p> <p>2+ Smolts are those stocked out on or after 1st January in the 2nd year after they hatched.</p>								

Section 6
Table 22

Sea Trout Stocking – number of eggs, fry, parr and smolts released - 2012

Environment			Unfed	Fed	0+	1+	1+	2+
Agency Region	River	Tributary	Ova	Fry	Fry	Parr	Parr	Smolts
South West	Axe	Main River + Kit Brook	0	8,000	0	22,000	0	0
	Total		0	8,000	0	22,000	0	0
Environment	Taff		0	0	0	0	0	0
	Ogmore		0	0	0	0	0	0
Agency	Ebbw		0	0	0	0	0	0
Wales	Tywi	Main river + Cothi and Gwili	0	0	0	0	0	0
	Mawddach	Main river, Eden and Wnion	0	0	0	14,000	0	0
	Total		0	0	0	14,000	0	0
North West	Ribble	Hodder	0	0	0	0	0	0
	Lune	Main River (plus var. tribs.)	0	0	0	0	0	0
	Total		0	0	0	0	0	0
England and Wales			0	8,000	0	36,000	0	0
Notes:	<p>1+ Parr are those stocked out on or after 1st January in the year after they hatched.</p> <p>1+ Smolts are those stocked out on or after 1st January in the 1st year after they hatched.</p> <p>2+ Smolts are those stocked out on or after 1st January in the 2nd year after they hatched.</p>							

7. REFERENCES

ANON, 2013. *Annual Assessment of Salmon Stocks and Fisheries in England and Wales, 2012* (preliminary assessment for ICES, April 2011) Cefas/EA:97 pp. ISBN: 978 0 907545 74 3.

RUSSELL, I.C., IVES, M.J., POTTER, E.C.E., BUCKLEY, A.A. and DUCKETT, L., 1995. *Salmon and migratory trout statistics for England and Wales, 1951-1990*. Fisheries Research Data Report (38):252 pp.

ENVIRONMENT AGENCY, 2011. *Salmonid and Freshwater Fisheries Statistics for England and Wales 2011*.

8. GLOSSARY

Cefas	The Centre for Environment, Fisheries & Aquaculture Science
EIFAC	European Inland Fisheries Advisory Commission
Grilse	Salmon that has spent not more than one winter at sea before maturing, also known as 1 sea winter (1SW) fish
ICES	International Council for the Exploration of the Seas
Migratory trout	Sea trout, referred to as sewin in Wales. Migratory form of trout <u>Salmo trutta</u> (L.)
MSW	Multi-Sea-Winter; a salmon that has spent two or more winters at sea before maturing
NASCO	North Atlantic Salmon Conservation Organisation
Nets	Instruments other than rod and line (including nets and fixed engines such as cribbs, putts, putchers, baulks, fishing weirs and traps as used for the capture of migratory salmonids)
NLO	Net Limitation Order

**Would you like to find out more about us,
or about your environment?**

Then call us on

03708 506 506 (Mon-Fri 8-6)

Calls to 03 numbers cost the same as calls to standard geographic numbers (i.e. numbers beginning with 01 or 02).

email

enquiries@environment-agency.gov.uk

or visit our website

www.environment-agency.gov.uk

incident hotline 0800 80 70 60 (24hrs)

floodline 0845 988 1188



Environment first: Are you viewing this on screen? Please consider the environment and only print if absolutely necessary.

If you are reading a paper copy, please don't forget to reuse and recycle if possible.