



Salmonid & Freshwater Fisheries Statistics for England and Wales, 2011

Including declared catches of salmon, sea trout, eels, smelt and lamprey by rods, nets and other instruments

Version1 November 2013

We are the Environment Agency. We protect and improve the environment and make it a better place for people and wildlife.

We operate at the place where environmental change has its greatest impact on people's lives. We reduce the risks to people and properties from flooding; make sure there is enough water for people and wildlife; protect and improve air, land and water quality and apply the environmental standards within which industry can operate.

Acting to reduce climate change and helping people and wildlife adapt to its consequences are at the heart of all that we do.

We cannot do this alone. We work closely with a wide range of partners including government, business, local authorities, other agencies, civil society groups and the communities we serve.

Published by:

Environment Agency
Horizon house, Deanery Road,
Bristol BS1 5AH
Email: enquiries@environment-agency.gov.uk
www.environment-agency.gov.uk

Further copies of this report are available
from our publications catalogue:
<http://publications.environment-agency.gov.uk>
or our National Customer Contact Centre:
T: 03708 506506

© Environment Agency 2011

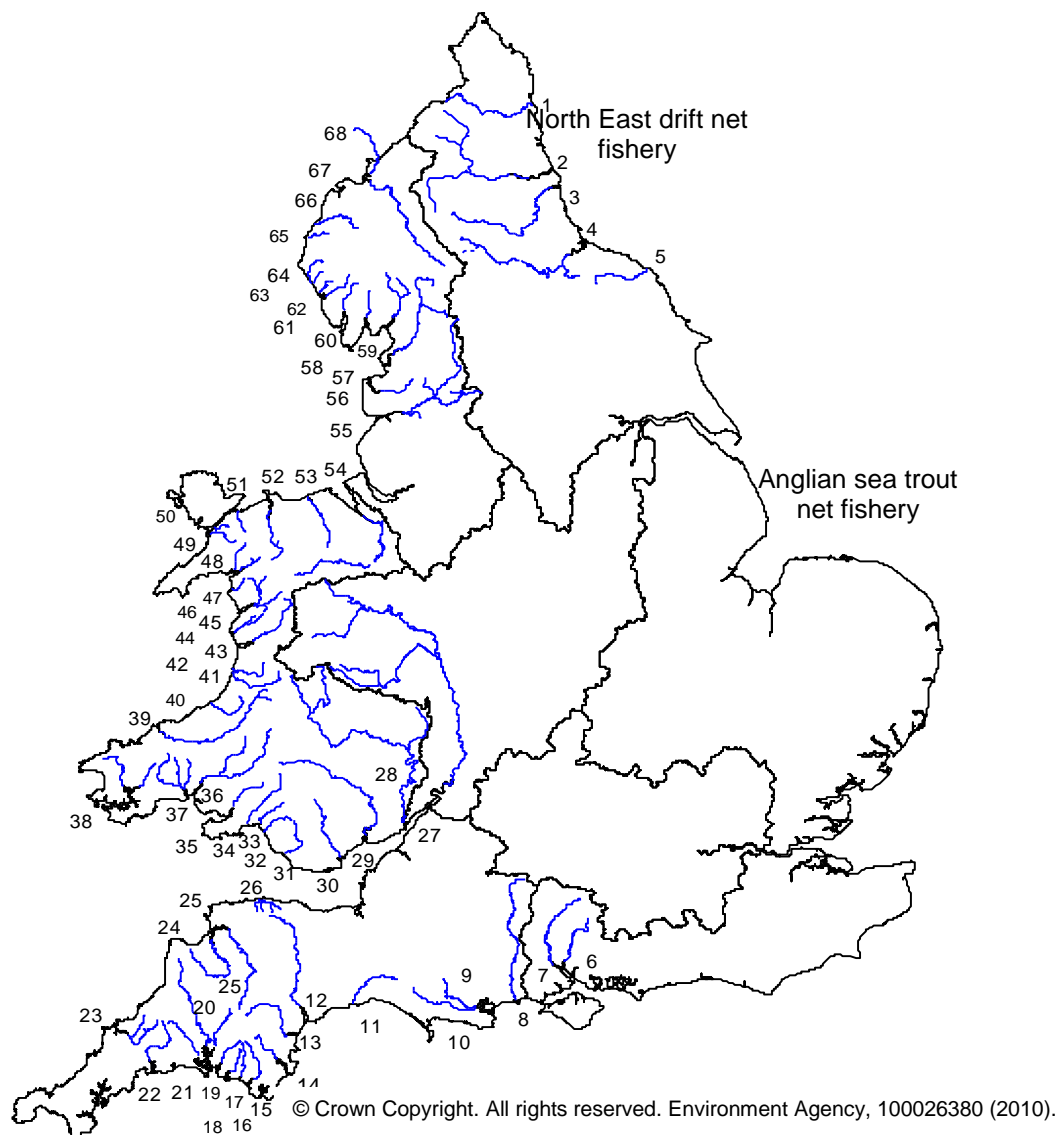
Email: enquiries@environment-agency.gov.uk.

All rights reserved. This document may be reproduced
with prior permission of
the Environment Agency.

Acknowledgements

The Environment Agency would like to take this opportunity to thank all the fishermen who sent us their catch returns last year. Your returns help protect our fish stocks and without them this report would not be possible.

Major salmon and sea trout rivers and fisheries in England and Wales



Key:

North East

- 1 Coquet
- 2 Tyne
- 3 Wear
- 4 Tees
- 5 Esk (Yorks)

Southern

- 6 Itchen
- 7 Test

South West

- 8 Avon (Hants)
- 9 Piddle
- 10 Frome
- 11 Axe
- 12 Exe
- 13 Teign
- 14 Dart
- 15 Avon (Devon)
- 16 Erme
- 17 Yealm
- 18 Plym
- 19 Tavy
- 20 Tamar
- 21 Lynher

Midlands

- 22 Fowey
- 23 Camel
- 24 Torridge
- 25 Taw
- 26 Lyn
- 27 Severn

Wales

- 28 Wye
- 29 Usk
- 30 Taff
- 31 Ogmore

- 32 Afan
- 33 Neath
- 34 Tawe
- 35 Loughor
- 36 Tywi
- 37 Taf
- 38 Cleddau
- 39 Teifi
- 40 Aeron
- 41 Ystwyth
- 42 Rheidol
- 43 Dyfi
- 44 Dysynni
- 45 Mawddach

- 46 Artro
- 47 Dwyrhyd
- 48 Glaslyn
- 49 Gwyrfai
- 50 Seiont
- 51 Ogwen
- 52 Conwy
- 53 Clwyd
- 54 Dee

North West

- 55 Ribble
- 56 Wyre
- 57 Lune
- 58 Kent
- 59 Leven
- 60 Crake
- 61 Duddon
- 62 Esk (Cumbrian)
- 63 Irt
- 64 Ehen
- 65 Derwent
- 66 Ellen
- 67 Eden
- 68 Esk (Border)

Contents

1.	Introduction	6
2.	The Environment Agency and its Regions	6
3.	Rod and net licence catch returns	6
4.	National overview and summary of main findings	7
	Table 1	Summary of declared salmon and sea trout catches England & Wales (2011, 2010 and 5-year mean)
	Table 2	Summary of total salmon and sea trout net and fixed engine catches and weights (2011)
	Table 3	Summary of total salmon and sea trout catches and weights (2011)
	Figure 1	Number of net licences issued (1985-2011) and number of days declared fished by salmon and sea trout rod licence holders (1994-2011), England & Wales
	Figure 2	Total salmon net catches for England & Wales (1956-2011)
	Figure 3	Total salmon rod catches for England & Wales (1956-2011)
	Figure 4	Total sea trout net catches for England & Wales (1978-2011)
	Figure 5	Total sea trout rod catches for England & Wales (1978-2011)
5.	Regional Catch Summaries	12
	Table 4	Summary of salmon net catches by Region (2011, 2010 and 5-year mean)
	Table 5	Summary of sea trout net catches by Region (2011, 2010 and 5-year mean)
	Table 6	Summary of salmon rod catches by Region (2011, 2010 and 5-year mean)
	Table 7	Summary of sea trout rod catches by Region (2011, 2010 and 5-year mean)
	Figure 6	Salmon and sea trout net catches by Region (2011)
	Figure 7	Salmon and sea trout rod catches by Region (2011)
6.	Description of data tables 1 to 21	14
	Data tables 1 to 21	15
7.	References	41
8.	Glossary	41

Section 1

Introduction

This report is the Environment Agency's seventeenth collation of salmon and sea trout catch statistics for England and Wales and the Border Esk in Scotland. From 1989 to 1994, these statistics were published by the National Rivers Authority (NRA). The Ministry of Agriculture, Fisheries and Food, Directorate of Fisheries Research also included them in its Data Report series between 1983 and 1988.

This report is a reference document of declared migratory salmonid catches in England, Wales and Border Esk. It also reports declared catches from other authorised net fisheries in England and Wales the Environment Agency regulates.

Salmon stock assessment data (including provisional catches and run estimates) are published in an

annual assessment for the International Council for the Exploration of the Seas (ICES). The fifteenth report in this series was published jointly by the Environment Agency and the Centre for Environment, Fisheries & Aquaculture Science (Cefas) in April 2012 (www.environment-agency.gov.uk/fishstats).

The catch data recorded here represent declared catches only. This document should not, therefore, be accepted as a definitive record of the total numbers of fish landed. Furthermore, the relationship between catch and stock size is complex, regardless of the accuracy of the catch data. Great care must be taken therefore in interpreting these data.

Section 2

The Environment Agency and its regions

The Environment Agency is a non-departmental public body established by the Environment Act 1995. It has taken over the functions of its predecessors, the National Rivers Authority, Her Majesty's Inspectorate of Pollution, Waste Regulation Authorities and some parts of the Department of the Environment. The Environment Agency came into effect on 1 April 1996.

There are seven Environment Agency Regions: North East & Yorkshire, Anglian, South East (Thames &

Southern combined), South West, Midlands, Environment Agency Wales and North West. The Border Esk in Scotland is regulated by North West region and for the purposes of this report will be included as part of the North West statistics. Throughout this report references to salmon and sea trout fisheries in England and Wales includes the parts of the Border Esk in Scotland.

Section 3

Rod and net licence catch returns

Salmon and sea trout rod licence holders are legally required to submit a full and accurate catch return to the Agency by 1 January in the following year. Commercial net and fixed engine licence holders must submit their returns within 14 days of the end of their respective fishing seasons.

Logbook return compliance was good with only 10% of netsman requiring 2nd reminders. All logbooks were accounted for in 2011.

An email message was sent 12,391 anglers in November 2011 to encourage rod catch returns prior to the traditional paper reminder being sent.

This also contained a link to our electronic catch return form available on the Environment Agency website. In December 2011, the formal paper reminder was mailed all licence holders still to declare their catch returns. The deadline to submit these catch returns was 31 December 2011.

A final email reminder was sent to approximately 2000 anglers in March 2012 which yielded a further 500 returns. This brought the total returns to 22763.

National overview and summary of main findings

Table 1 Summary of declared salmon and sea trout rod and net catches for England and Wales in 2011 showing % change on 2010 and the 5- year mean (2006- 2010).

	2011	2010	5-yr. Mean (2006-2010)	% change (+/-)	
				2011 on 2010	2011 on 5- yr mean 5-yr. Mean
RODS					
*Licences issued	36,983	36,161	34,236	2%	8%
*Days declared fished	196,902	195,086	172,478	1%	14%
Salmon caught	23,008	24,826	20,679	-7%	11%
% Salmon released (number released)	62% 14,187	59% 14,691	57% 11,739	3%	5%
Sea trout caught	35,564	37,543	29,855	-5%	19%
% Sea trout released (number released)	72% 25,680	69% 26,010	62% 18,414	3%	10%
NETS					
Licences issued	308	326	338	-6%	-4%
Salmon caught	25,792	22,615	12,694	14%	103%
Sea trout caught	31,971	60,218	32,922	-47%	-3%

* Salmon and sea trout licences only

RODS SUMMARY

- The number of salmon and sea trout rod licences issued in 2011 (36,983) increased by 2% compared with 2010, and increased by 8% compared with the mean of the previous five years (2006-2010).
- The total declared salmon rod catch in 2011 (23,008) decreased by 7% compared with 2010, with an 11% increase when compared with the 5- year mean (20,679).
- The declared rod catch of sea trout in 2011 (35,564) decreased by 5% compared with 2010 (37,543) and has increased by 19% compared with the 5-year mean (29,855).
- Catch-and-release rates for rod caught salmon (62%) and sea trout (72%) in 2011 showed an increase on those recorded in 2010 that reported 59% and 69% respectively. It is encouraging that trend is continuing. This is a stark contrast to release figures in 1993 of just 8% of rod caught salmon.
- 46% of Salmon and 56% of sea trout were caught by anglers using a fly in 2011, followed by spinning 37% of salmon, 28% of sea trout and bait with 14% of salmon and 14% of sea trout. 3% of catches had no method information. These percentage figures are all principally the same as

2010 but with a 7% increase for Salmon caught using a fly, and all other changes being minor of 4% or less.

- The river with the highest declared rod catch of salmon in 2011 was the Tyne (5,630) followed by the Wear (1,613) the Eden (1,109), the Lune (1,100) and the Border Esk (1,068). 24% of the total England and Wales rod catch of salmon was recorded on the Tyne in 2011, compared with 20% in 2010.

- The river with the highest declared rod catch of sea trout in 2011 was the Teifi (2,981) followed by the Dyfi (2,646), Tywi (2,609) and the Wear (1,843). The number of sea trout caught overall in 2011 was almost 2,000 fewer than in 2010.

- Please note that for salmon on the Wye, Test and Itchen rivers data from catch returns has been used in preference to owner's data, as has been used in the past.

NETS SUMMARY

- A total of 308 salmon and sea trout commercial net licences were issued in 2011. This compares with 326 in 2010 and a 5-year mean of 338. Since 1985 there has been a 69% reduction in the number of net licences issued annually in England and Wales (from 1,026 to 308).

- The salmon net catch in 2011 (25,792) increased by 14% compared with the previous year and by 103% when compared with the 5-year mean (12,694). Whilst most fisheries showed decreases that averaged 30%, the North East fishery showed an increase of 21% whilst the Anglian fishery saw an increase from 1 salmon to 5.

- The average weight of net caught salmon in 2011 was 3.86 kg. This compares with an average weight of 3.63 kg for rod caught salmon.

- Net fisheries exempted from the 'spring' byelaws (that is those targeting sea trout) released all salmon before 1 June. All salmon caught in the South West were released (323 in total).

- A total of 31,971 sea trout were declared caught by the net fisheries in 2011, a decrease of 47% compared with the 2010 catch and a decrease of 3% compared with the 5-year mean.

- The average weight of net and rod caught sea trout in 2011 was 1.76 kg and 0.82 kg respectively. Byelaws regulating mesh size has resulted in a decrease in the capture of small sea trout by most net fisheries.

Section 4

Table 2 Summary of total salmon and sea trout net and fixed engine catches and weights, 2011

	Salmon		Sea trout	
	Number	Weight (t.)	Number	Weight (t.)
Caught	25,792	101	31,971	56
Retained	25,457	100	31,941	56
Released	335	1.39	30	0.03

Table 3 Summary of total salmon and sea trout rod catches and weights, 2011

	Salmon		Sea trout	
	Number	Weight (t.)	Number	Weight (t.)
Caught	23,008	97.8	35,564	32.8
Retained	8,812	36.4	9,884	9.1
Released	14,196	61.4	25,680	23.7

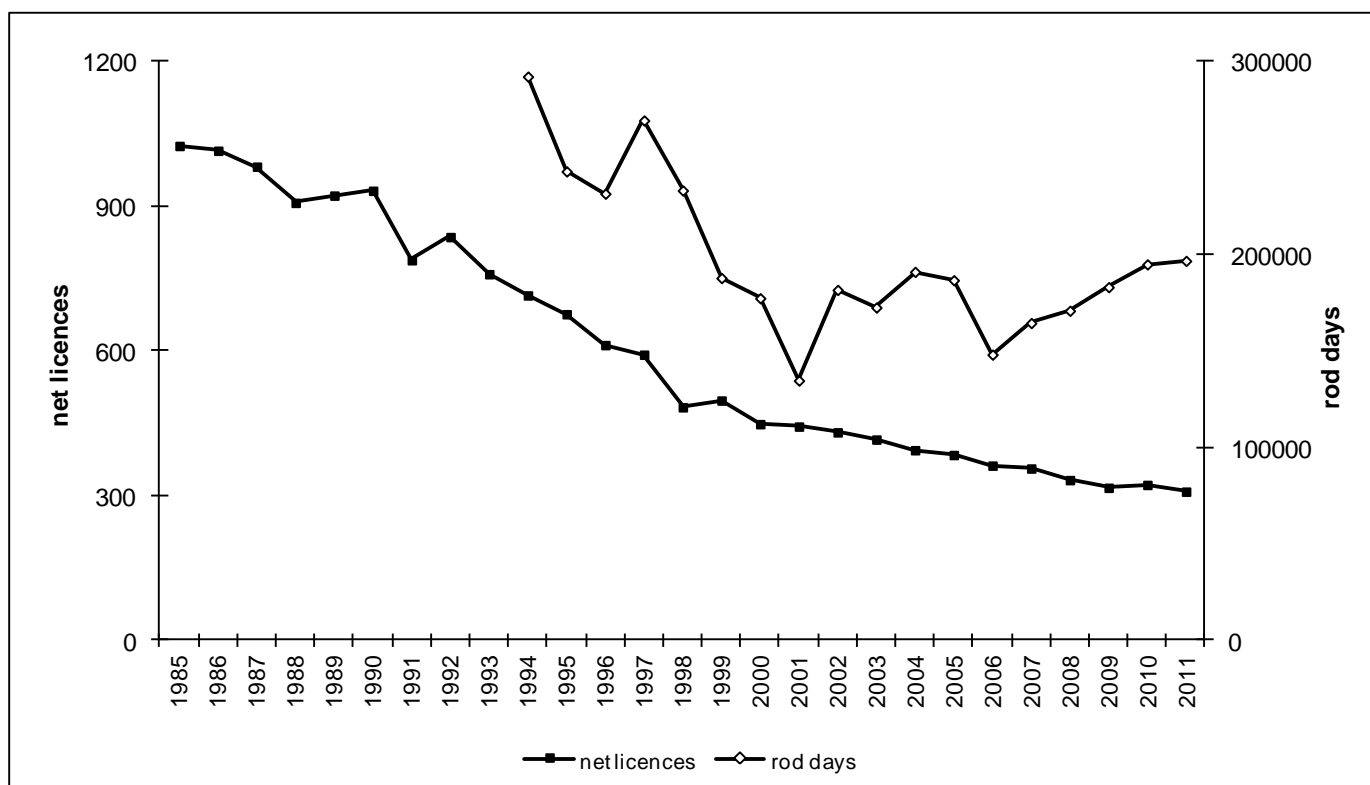


Figure 1 Number of net and fixed engine licences issued (1985-2011) and total number of days fished by salmon and sea trout rod licence holders (1994-2011), England & Wales.

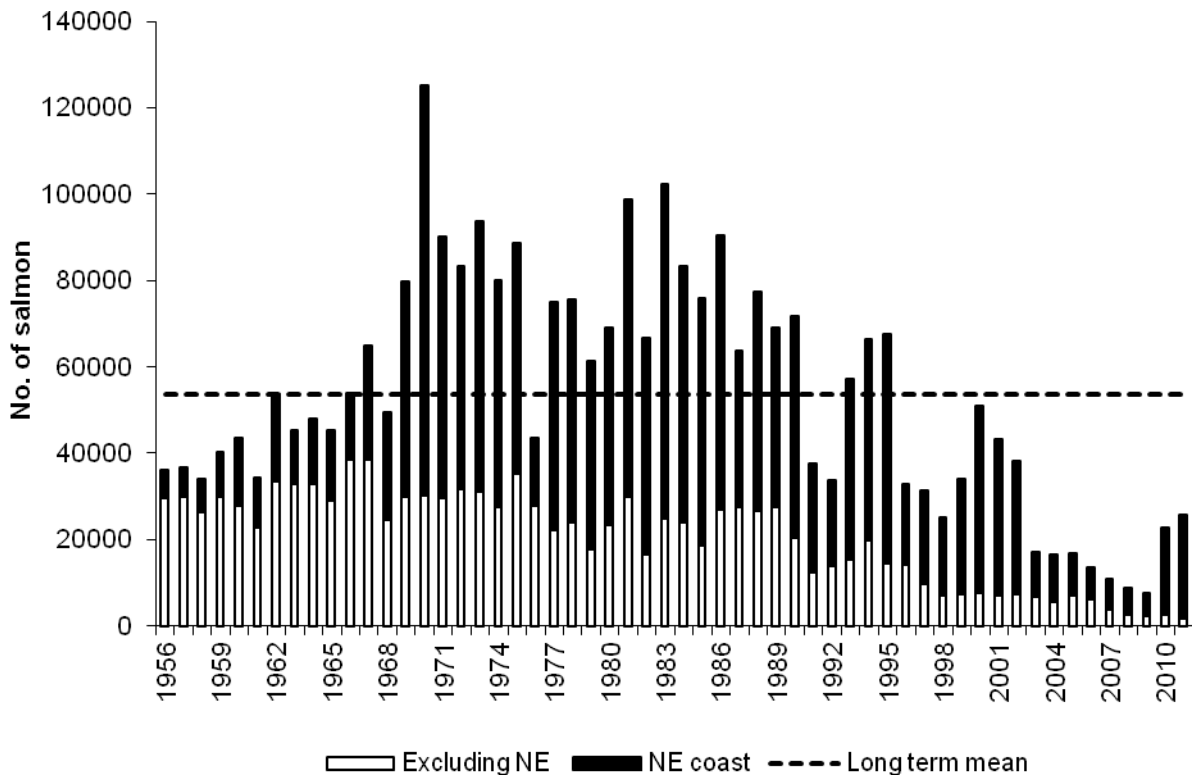


Figure 2 Total declared salmon net and fixed engine catch for England & Wales, 1956-2011 (shaded area indicates the catch for the North East Coast fishery).

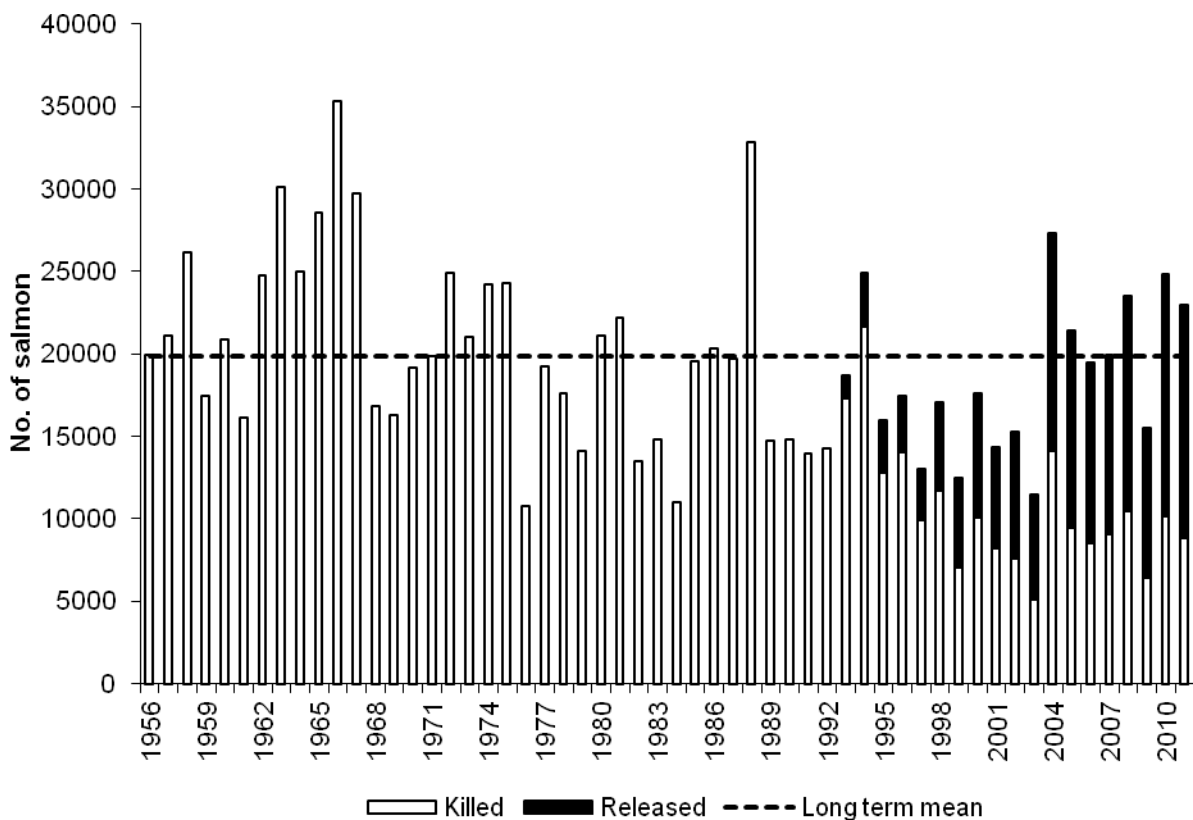


Figure 3 Total declared salmon rod catch for England & Wales, 1956-2011 (shaded area indicates fish caught and released).

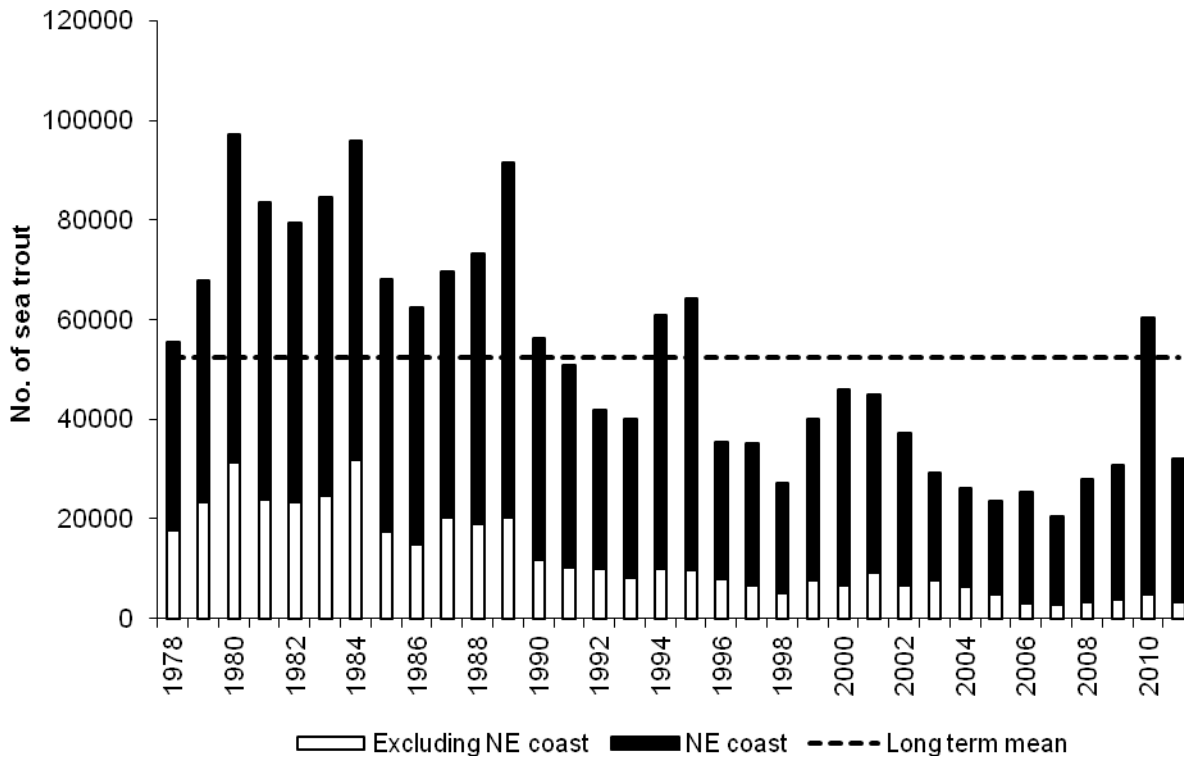


Figure 4 Total declared sea trout net and fixed engine catch for England & Wales, 1978-2011 (shaded area indicates the catch for the North East coast fishery).

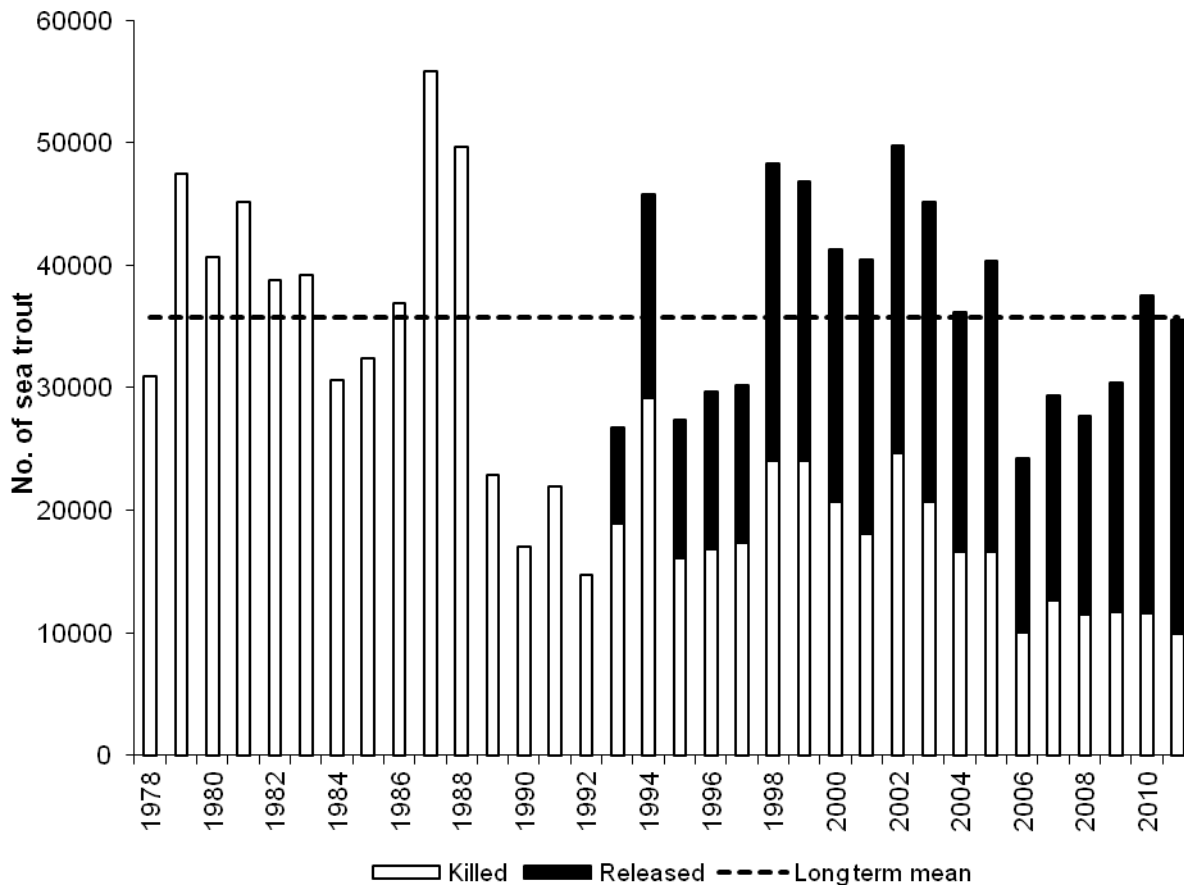


Figure 5 Total declared sea trout rod catch for England & Wales, 1978-2011 (shaded area indicates fish caught and released).

Section 5

Regional catch summaries (2011, 2010 and 5- year mean)

Table 4 Summary of salmon net and fixed engine catches by Region

	2011	2010	5-year mean (2006-2010)	% change (+/-) 2011 on 2010	% change (+/-) 2011 on 5-yr mean
North East	24,148	19,982	9890	21%	144%
Anglian	5	1	5	400%	0%
South East	0	0	0	-	-
South West	323	506	382	-36%	-15%
Midlands	171	238	667	-28%	-74%
EA Wales	230	223	272	3%	-15%
North West	915	1665	1454	-45%	-37%

Table 5 Summary of sea trout net and fixed engine catches by Region

	2011	2010	5-year mean (2006-2010)	% change (+/-) 2011 on 2010	% change (+/-) 2011 on 5-yr mean
North East	28,703	55,546	31,234	-48%	-8%
Anglian	488	471	681	4%	-28%
South East	9	1	0	-	0%
South West	574	692	664	-17%	-14%
Midlands	0	1	2	-	-
EA Wales	1906	2074	1378	-8%	38%
North West	291	1433	870	-80%	-67%

Table 6 Summary of salmon rod catches by Region

	2011	2010	5-year mean (2006-2010)	% change (+/-) 2011 on 2010	% change (+/-) 2011 on 5-yr mean
North East	8,373	7,947	5761	5%	45%
Anglian	0	1	0	-100%	0%
South East *	415	368	237	13%	75%
South West	2402	2628	2152	-9%	12%
Midlands	362	235	290	54%	25%
EA Wales	4784	5573	4919	-14%	-3%
North West	6,672	8,074	7,454	-17%	-10%

Table 7 Summary of sea trout rod catches by Region

	2011	2010	5-year mean (2006-2010)	% change (+/-) 2011 on 2010	% change (+/-) 2011 on 5-yr mean
North East	4,492	6,021	4,577	-25%	-2%
Anglian	2	4	1	-50%	100%
South East	984	1014	318	-3%	209%
South West	6,216	7,578	5,595	-18%	11%
Midlands	79	23	30	243%	163%
EA Wales	17,274	16,674	13,875	4%	24%
North West	6,517	6,229	5,085	5%	28%

Section 5

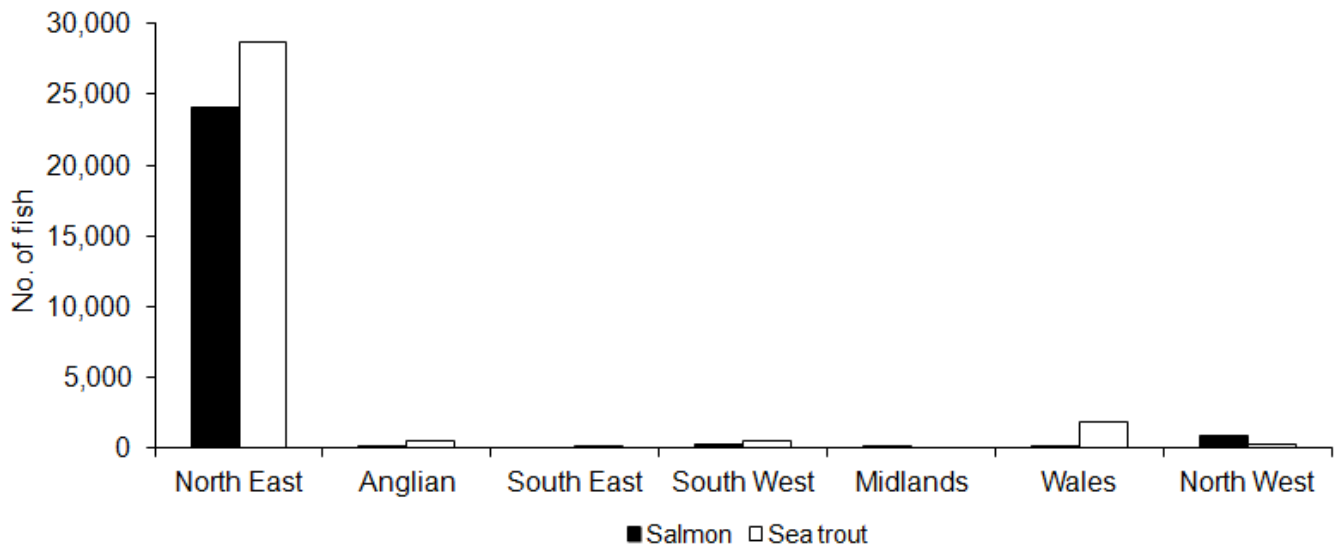


Figure 6 Declared salmon and sea trout net fixed engine catches by Region, 2011.

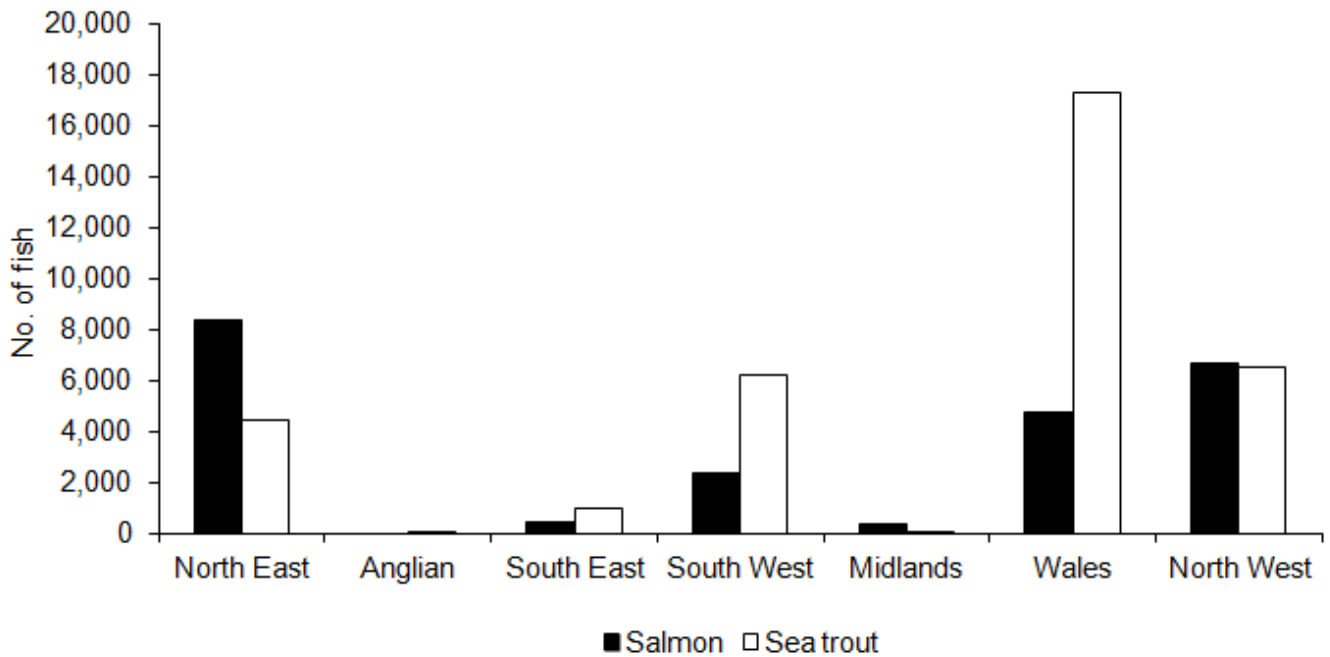


Figure 7 Declared salmon and sea trout rod catches by Region, 2011.

Section 6

Tables

Table 1	Licensed Net Fishing - Number & Value 2011 Season
Table 2	Eel, Elver, Lamprey and Smelt authorisations – Number and Value 2011 Season
Table 3	National Rod Fishing Licences – Number and Value Licences valid from 1 April 2011- 31 March 2012
Table 4	Net Season & Weekly Closure Times - Salmon & Sea Trout – 2011 Season
Table 5	Rod Fishing Seasons for Salmon & Sea Trout including method restrictions & bag limits 2011
Table 6	Main Updates for Rod & Net fisheries in 2011
Table 7	Salmon Net Catches – 2011 Season
Table 8	Sea Trout Net Catches – 2011 Season
Table 9	Salmon Rod Catches (released totals in brackets) – 2011 Season
Table 10	Sea Trout Rod Catches (released totals in brackets) – 2011 Season
Table 11	Rod Caught Salmon & Sea Trout, Average Weight (kg) - 2011 Season
Table 12	Number of rod caught salmon in weight categories (lb & kg) - 2011 Season
Table 13	Number of rod caught sea trout in weight categories (lb & kg) - 2011 Season
Table 14	Summary of salmon net catches, 2001 - 2011
Table 15	Summary of sea trout net catches, 2001 - 2011
Table 16	Summary of salmon rod catch, 2001 - 2011
Table 17	Summary of sea trout rod catch, 2001 - 2011
Table 18	Reported Net Effort data for Salmon & Sea Trout- 2011
Table 19	Reported Rod Effort Data for Salmon & Sea Trout – 2011
Table 20	Estimated Proportions of Grilse & Multi- Sea Winter (MSW) Salmon in Declared Rod Catch- 2011
Table 21	Salmon Stocking – number of eggs, fry, parr and smolts released – 2011
Table 22	Sea Trout Stocking – number of eggs, fry, parr and smolts released – 2011

Section 6

Table 1 Licensed Net Fishing - Number & Value 2011 Season

Environment Agency Region	Fishing Method	Number of licences	Number of licensees (a)	Duty (£)	Value* (£)
North East Northumbria Area	Coastal (N) drift and T nets	6	3	1313.00	3939.00
	Coastal (N) drift nets	9	9	1206.00	10854.00
	Coastal (N) T nets	23	23	842.00	19366.00
	Coastal (S) T nets	1	1	842.00	842.00
	Total	39	36		35,001.00
North East Yorkshire Area	Coastal drift nets	2	2	1206.00	2412.00
	Coastal T or J nets	34	34	842.00	28628.00
	Total	36	36		31,040.00
Anglian	Drift nets	20	20	79.00	1580.00
	Other nets (various)	6	6	79.00	474.00
	Total	26	26		2,054.00
South East	Seine nets	1	1	79.00	79.00
	Total	1	1		79.00
South West	Seine nets	3	3	381.00	1143.00
	Total	3	3		1,143.00
South West Devon & Cornwall	Seine nets (single river)	19	19	343.00	6517.00
	Drift nets (Camel)	6	6	314.00	1884.00
	Total	25	25		8,401.00
Midlands	Lave nets (half season)	24	24	60.00	1440.00
	Seine nets	2	2	285.00	570.00
	Fixed Engine ranks: 2 units (50 putchers per unit)	1	1	79.00 per unit	158.00
	Total	27	27		2,168.00
Environment Agency Wales	Compass nets	6	6	96.00	576.00
	Coracle nets (Teifi, Taf)	13	13	248.00	3224.00
	Coracle nets (Towy)	8	8	555.00	4440.00
	Wade nets	1	1	79.00	79.00
	Seine nets (Dyfi, Towy, Teifi)	9	9	582.00	5238.00
	Seine nets (Dysynni, Conwy)	4	4	372.00	1488.00
	Seine nets (Nevern, Mawddach)	2	2	261.00	522.00
	Lave nets	8	8	79.00	632.00
Total	51	51		16,199.00	
North West	Haaf nets (Solway)	64	64	143.00	9152.00
	Drift nets (Ribble)	5	5	424.00	2120.00
	Haaf nets (Lune)	12	12	285.00	3420.00
	Drift nets (Lune)	7	7	582.00	4074.00
	Lave nets (Kent)	7	7	143.00	1001.00
	Lave nets (Leven)	2	2	143.00	286.00
	Coop nets (Eden)	3	3	367.00	1101.00
	Total	100	100		21,154.00
England & Wales	Total	308	305		117,239.00
Key:	* Value is calculated by the number of licensees multiplied by duty				

Section 6

Table 2

Eel, Elver, Lamprey and Smelt authorisations – Numbers and Value 2011 Season

Fishery	Authorisations				CATCHES (Kg)			
	Number of licences (a)	Method	No. instruments	Income (£)	Method	Elver	Yellow Eel	Silver Eel
Adult Eel	27	Small wingless traps	375	533.00	Small wingless traps	n/a	2,389	831
	97	Fyke nets	2,777	4,996.00	Fyke nets	n/a	34,099	2,916
	6	Fixed Traps	7	805.00	Fixed Traps	n/a	0	569
		Total	3,159	6,334.00	Total	n/a	36,488	4,316
Elver	446	Dip Net	446	37,910.00	Dip Net	2,249	n/a	n/a
		Total	446	37,910.00	Total	2,249	n/a	n/a
		Grand Total	3,605	44,244.00	Total	2,249	36,488	4,316

Fishery	Authorisations				CATCHES (Kg)	
	Number of licences (a)	Method	No. instruments	Income (£)	Method	Lamprey
Lamprey	2	Pot Traps	75	£140.00	Pot Traps	899
	0	Fyke Nets	0	0	Fyke Nets	0
		Total	75	£140.00	Total	899

Fishery	Authorisations				CATCHES (Kg)	
	Number of licences (a)	Method	No. instruments	Income (£)	Method	Smelt
Smelt	2	Pot Traps	140	£160.00	Pot Traps	1,385
	3	Fyke Nets	92	£210.00	Fyke Nets	1,847
		Total	232	£370.00	Total	3,232

Section 6

Table 3 National Rod Fishing Licences – Number and Value. Licences valid from 1 April 2011- 31 March 2012

Environment Agency Region	Non-migratory trout and coarse fish						Salmon and sea trout						All licences	
	Full Duty £27.00	Concession Duty £18.00	Junior Duty £5.00	8 Day Duty £10.00	1 Day Duty £3.75	Total	Full Duty £72.00 (a)	Concession Duty £48.00 (a)	Junior Duty £5.00	8 Day Duty £23.00	1 Day Duty £8.00	Total	Total Number	(%)
North East	83,170	25,627	14,543	6,135	61,375	190,850	2,940	1,334	573	326	1,596	6,769	197,619	14%
Anglian	113,401	31,496	19,251	8,938	65,118	238,204	320	210	303	362	382	1,577	239,781	16%
Thames	114,101	26,435	16,945	10,191	82,860	250,532	1,113	366	456	560	1,036	3,531	254,063	17%
Southern	58,624	15,530	11,023	6,285	45,897	137,359	480	259	308	221	439	1,707	139,066	9%
South West	44,930	12,555	7,240	3,878	31,658	100,261	1,786	935	312	199	911	4,143	104,404	7%
Midlands	130,529	43,186	20,718	8,492	81,500	284,425	1,175	835	371	330	805	3,516	287,941	19%
E.A. Wales	24,011	7,447	4,916	1,662	18,686	56,722	3,522	1,975	778	206	715	7,196	63,918	5%
North West	78,858	23,469	13,489	5,603	42,973	164,392	3,557	2,036	702	286	1,283	7,864	172,256	11%
Unknown	1,452	439	345	2,414	3,172	7,822	110	77	32	146	315	680	8,502	1%
Total	649,076	186,184	108,470	53,598	433,239	1,430,567	15,003	8,027	3,835	2,636	7,482	36,983	1,467,550	
Total Value (£)	£17,525,052	£3,351,312	£542,350	£535,980	£1,624,646	23,579,340	£1,070,442	£383,082	£19,070	£60,628	£59,856	£1,593,078	£25,172,418	

(a) Full and concession salmon and sea trout licences include upgrades from non-migratory trout and coarse fish licences.

Section 6

Table 4 Net Season & Weekly Closure Times- Salmon & Sea Trout – 2011 Season

Environment Agency Region	River/ Fishery	Fishing Method	Season inclusive dates (see below)	Weekly closure times	Voluntary Closures/Buyouts Other	
North East Northumbria	Coastal (N)	Drift nets	1.6 - 31.8	1800 Fri to 0600 Mon	Nightly close time 2000 to 0400	
		T nets (a)	26.3 - 31.8	1800 Fri to 0600 Mon	Nightly close time 2000 to 0400	
	Coastal (S)	Drift nets	1.6 - 31.8	1800 Fri to 0600 Mon	Nightly close time 2000 to 0400	
		T nets (a)	26.3 - 31.8	1800 Fri to 0600 Mon	Nightly close time 2000 to 0400	
North East Yorkshire	Coastal	Drift nets	1.6 - 31.8	1800 Fri to 0600 Mon	Nightly close time 2000 to 0400	
		T or J nets (a)	26.3 - 31.8	2000 Fri to 0600 Mon		
Anglian	Coastal	Drift nets (a)	1.4 - 30.9	0600 Sun to 2400 Mon		
		Other nets (a)	1.4 - 30.9	0600 Sun to 2400 Mon		
Southern	Hants area	Seine nets	15.2 - 31.7	0600 Sat to 0600 Mon		
South West	Avon + Stour Poole Harbour	Seine nets	1.6 - 31.7	0600 Sat to 0600 Mon & 2100 - 0500 Wed, Thu, Fri	Partial buyback arrangements complete buy out- Exe mitigation group Partial buy out from 2006 Partial buy out from 2006 Buyout from 1/7 to 31/8 Buyout - complete season Buyout - complete season Buyout - complete season Buyout- complete season Partial Buyout	
		Seine net	1.6 - 31.7			
	Exe	Seine nets (upper reach)	1.6 - 14.8	0600 Sat to 0600 Mon		
	Exe	Seine nets (lower reach)	1.6 - 14.8	0600 Sat to 0600 Mon		
	Teign	Seine nets (a)	15.3 - 31.7	0600 Sat to 0600 Mon		
	Dart	Seine nets (a)	15.3 - 16.8	0600 Sat to 0600 Mon		
	Camel	Drift nets	1.6 - 31.8	0600 Sat to 0600 Mon		
	Tavy	Seine nets	1.6 - 31.8	0600 Fri to 0600 Mon (2.3 - 31.5)		
	Tamar	Seine nets	1.6 - 31.8	&		
	Lynher	Seine nets	1.6 - 31.8	0600 Sat to 0600 Mon (1.6 - 31.8)		
	Fowey	Seine nets (a)	2.3 - 31.8	0600 Sat to 0600 Mon		
	Taw/Torridge	Seine nets	1.6 - 31.7	0600 Fri to 0600 Mon		
Midlands	Severn	Seine nets	1.6 - 31.8	1200 Sat to 0600 Mon		
		Lave nets	1.6 - 31.8	1200 Sat to 0600 Mon		
		Fixed Engines	1.6 - 15.8	no closure period		
Environment Agency Wales	Tywi	Coracle nets (a)	1.3 - 31.7	0600 Sat to 1200 Mon		
		Seine nets	1.3 - 31.7	0600 Sat to 1200 Mon		
		Taf	Wade net	1.6 - 31.7		0600 Sat to 1200 Mon
		Coracle net (a)	1.3 - 31.7	0600 Sat to 1200 Mon		
	Cleddau	Compass nets	1.6 - 31.8	0600 Sat to 1200 Mon		
		Nevern	Seine net (a)	1.4 - 31.8		0600 Sat to 1200 Mon
	Teifi	Seine nets (a)	1.4 - 31.8	0600 Sat to 1200 Mon		
		Coracle nets (a)	1.4 - 31.8	0600 Sat to 1200 Mon		
	Dyfi	Seine nets (a)	1.4 - 31.8	0600 Sat to 0600 Mon		
	Dysynni	Seine net	1.6 - 31.8	0600 Sat to 0600 Mon		
		Mawddach	Seine nets	1.6 - 31.8		0600 Sat to 0600 Mon
	Conwy	Basket trap	1.6 - 31.8	no closure period		
		Seine nets	1.6 - 31.8	0600 Sat to 0600 Mon		
	Black Rock	Lave net	1.6 - 31.8	2400 Thur to 2400 Sun		
	North West	Ribble	Drift nets	1.6 - 31.8		0600 Sat to 0600 Mon
Lune			Haaf nets	1.6 - 31.8	0600 Sat to 0600 Mon	
Drift nets			1.6 - 31.8	0600 Sat to 0600 Mon		
Kent		Lave nets	1.6 - 31.8	0600 Sat to 0600 Mon		
		Leven	Lave nets	1.7 - 31.8	0600 Sat to 0600 Mon	
Eden		Coops	1.6 - 31.8	0600 Sat to 0600 Mon		
Solway		Haaf nets	1.6 - 9.9	0600 Sat to 2400 Sun		

(a) Sea trout fisheries exempted from national byelaws. All salmon caught before 1 June to be released alive.

Section 6

Table 5 Rod Fishing Season for Salmon & Sea Trout including method restrictions & bag limits 2011 Season

Environment Agency Region	River	Salmon Season (inclusive dates)	Sea trout Season (inclusive dates)	*Method Restrictions	*Bag limits/Catch and Release etc.
North East	Aln	1.2 - 31.10	3.4 - 31.10		
	Coquet	1.2 - 31.10	3.4 - 31.10		
	Tyne	1.2 - 31.10	3.4 - 31.10		
	Wear	1.2 - 31.10	3.4 - 31.10		
	Tees	1.2 - 31.10	3.4 - 31.10		
	Esk (Yorks.) Ouse (Yorks.)	6.4 - 31.10 6.4 - 31.10	6.4 - 31.10 6.4 - 31.10		
Anglian	Region	1.4 - 28.9	1.4 - 28.9		2 bag limit per day
Thames	Thames	1.4 - 30.9	1.4 - 30.9		2 salmon bag limit a day
Southern	Test	17.1 - 2.10	1.5 - 31.10	Voluntary worm ban throughout season	Catch & Release all season for salmon (local agreement)
	Itchen	17.1 - 2.10	1.5 - 31.10	Voluntary worm ban throughout season	Catch & Release all season for salmon (local agreement)
South West	Avon (Hants.)	1.2 - 31.8	15.4 - 31.10	artificial fly only before 15/5	Fly only and mandatory catch and release during trial extension period
	Piddle	1.3 - 31.8	15.4 - 31.10	artificial fly only before 15/5	
	Frome	1.3 - 31.8	15.4 - 31.10	artificial fly only before 15/5	
	Axe	15.3 - 31.10	15.4 - 31.10	no shrimp, prawn, worm or maggot. Fly only after 31/7 below Axbridge	
	Eye	14.2 - 30.9	15.3 - 30.9	no worm or maggot	
	Teign	1.2 - 30.9	15.3 - 31.10	no worm or maggot before 1/6	
	Dart	1.2 - 30.9	15.3 - 30.9	no worm or maggot. No shrimp/prawn exc. below Staverton Br.	
	Avon (Devon)	15.4 - 30.11	15.4 - 30.9	no worm or maggot	
	Plym	1.4 - 15.12	3.4 - 30.9		
	Tavy	1.3 - 14.10	3.3 - 30.9		
	Tamar	1.3 - 14.10	3.3 - 30.9	no worm, maggot, shrimp or prawn after 31/8	
	Lynher	1.3 - 14.10	3.3 - 30.9		
	Fowey	1.4 - 15.12	1.4 - 30.9		
	Camel	1.4 - 15.12	1.4 - 30.9		
	Taw	1.3 - 30.9	15.3 - 30.9	no shrimp, prawn, worm or maggot. Fly only 1/4 to 31/5	
	Torridge	1.3 - 30.9	15.3 - 30.9	no shrimp, prawn, worm or maggot. Fly only 1/4 to 31/5	
	Lyn	1.2 - 31.10	15.3 - 30.9	no worm or maggot before 1/6	
	Yealm	1.4 - 15.12	3.3 - 30.9		
Midlands	Severn	1.2 - 7.10	18.3 - 7.10	no float fishing with lure or bait	
Environment Agency Wales	Wye	3.3 - 17.10 (a)	3.3 - 17.10 (a)	Fly only 1.9 to 17.10. No bait all season	Catch & Release salmon and sea trout 18.10 to 25.10
	Usk	3.3 - 17.10	3.3 - 17.10	Fly only 3.3 - 1.6. Fly and Spin 15.9 - 17.10	
	Taff	20.3 - 17.10	20.3 - 17.10	Fly and Spin 20.3 - 15.4 & 1.10 - 17.10	
	Ogmore	20.3 - 17.10	20.3 - 17.10	Fly and Spin 20.3 - 15.4 & 1.10 - 17.10	
	Afan	20.3 - 17.10	20.3 - 17.10	Fly and Spin 20.3 - 15.4 & 1.10 - 17.10	
	Neath	20.3 - 17.10	20.3 - 17.10	Fly and Spin 20.3 - 15.4 & 1.10 - 17.10	
	Tawe	20.3 - 17.10	20.3 - 17.10	Fly and Spin 20.3 - 15.4 & 7.10 - 17.10	
	Loughor	20.3 - 17.10	20.3 - 17.10	Fly and Spin 20.3 - 15.4 & 7.10 - 17.10	
	Tywi	1.4 - 17.10	1.4 - 17.10	Fly and Spin 7.10 - 17.10	
	Taf	1.4 - 17.10	1.4 - 17.10	Fly and Spin 7.10 - 17.10	
	E+W.Cleddau	1.4 - 17.10	1.4 - 17.10	Fly and Spin 7.10 - 17.10	
	Nevern	1.4 - 17.10	1.4 - 17.10	Fly and Spin 7.10 - 17.10	
	Telfi	1.4 - 17.10	1.4 - 17.10	Fly and Spin 7.10 - 17.10	
	Aeron	1.4 - 17.10	1.4 - 17.10	Fly and Spin 7.10 - 17.10	
	Ystwyth	1.4 - 17.10	1.4 - 17.10	Fly and Spin 7.10 - 17.10	
	Rheidol	1.4 - 17.10	1.4 - 17.10	Fly and Spin 7.10 - 17.10	
	Dyfi	20.3 - 17.10 (some sections to 31.10)	20.3 - 17.10 (some sections to 31.10)	Fly and Spin 20.3 - 15.4 & 7.10 - 31.10	daily bag of 2 salmon & 4 sea trout, weekly bag of 5 salmon. C&R 8.10 to 17.10 daily bag of 2 salmon & 4 sea trout, weekly bag of 5 salmon. C&R 8.10 to 17.10 daily bag of 2 salmon & 4 sea trout, weekly bag of 5 salmon. C&R 8.10 to 17.10 daily bag of 2 salmon & 4 sea trout, weekly bag of 5 salmon daily bag of 2 salmon & 4 sea trout, weekly bag of 5 salmon daily bag of 2 salmon & 4 sea trout, weekly bag of 5 salmon daily bag of 2 salmon & 4 sea trout, weekly bag of 5 salmon daily bag of 2 salmon & 4 sea trout, weekly bag of 5 salmon daily bag of 2 salmon & 4 sea trout, weekly bag of 5 salmon daily bag of 2 salmon & 4 sea trout, weekly bag of 5 salmon daily bag of 2 salmon & 4 sea trout, weekly bag of 5 salmon daily bag of 2 salmon & 4 sea trout, weekly bag of 5 salmon daily bag of 2 salmon & 4 sea trout, weekly bag of 5 salmon daily bag of 2 salmon & 4 sea trout, weekly bag of 5 salmon daily bag of 2 salmon & 4 sea trout, weekly bag of 5 salmon daily bag of 2 salmon & 4 sea trout, weekly bag of 5 salmon Catch & Release salmon and sea trout 18.10 to 31.10
	Dysynni	20.3 - 17.10	20.3 - 17.10	Fly and Spin 20.3 - 15.4 & 7.10 - 17.10	
	Mawddach	20.3 - 17.10	20.3 - 17.10	Fly and Spin 20.3 - 15.4 & 7.10 - 17.10	
	Artro	20.3 - 17.10	20.3 - 17.10	Fly and Spin 20.3 - 15.4 & 7.10 - 17.10	
	Dwyrdd	20.3 - 17.10 (some sections to 31.10)	20.3 - 17.10 (some sections to 31.10)	Fly and Spin 20.3 - 15.4 & 7.10 - 31.10	
	Glaslyn	20.3 - 17.10	20.3 - 17.10	Fly and Spin 20.3 - 15.4 & 7.10 - 17.10	
	Dwyfawr	20.3 - 17.10	20.3 - 17.10	Fly and Spin 20.3 - 15.4 & 7.10 - 17.10	
	Llyfni	20.3 - 17.10	20.3 - 17.10	Fly and Spin 20.3 - 15.4 & 7.10 - 17.10	
	Gwyrfa	20.3 - 17.10	20.3 - 17.10	Fly and Spin 20.3 - 15.4 & 7.10 - 17.10	
	Seiont	20.3 - 15.11	20.3 - 15.11	Fly and Spin 20.3 - 15.4 & 7.10 - 15.11	
	Ogwen	20.3 - 17.10 (some sections to 31.10)	20.3 - 17.10 (some sections to 31.10)	Fly and Spin 20.3 - 15.4 & 7.10 - 31.10	
	Conwy	20.3 - 17.10 (some sections to 31.10)	20.3 - 17.10 (some sections to 31.10)	Fly and Spin 20.3 - 15.4 & 7.10 - 31.10	
	Clwyd	20.3 - 17.10	20.3 - 17.10	Fly and Spin 20.3 - 1.6, Fly only 1.10 - 17.10	
	Dee	20.3 - 17.10	20.3 - 17.10	Fly only 20.3 - 14.4. Fly and Spin 15.4 - 17.10	

Section 6

Table 5 (continued)

Rod Fishing Season for Salmon & Sea Trout including method restrictions & bag limits 2011 Season

Environment Agency Region	River	Salmon Season (inclusive dates)	Sea trout Season (inclusive dates)	*Method Restrictions	*Bag limits/Catch and Release etc.
North West	Ribble	1.2 - 31.10	1.4 - 30.9		Byelaw (28/02/07) No more than 2 salmon can be killed per season
	Wyre	1.2 - 31.10	1.4 - 30.9		
	Lune	1.2 - 31.10	1.4 - 30.9		Byelaw (NW-14/02/00) no more than four salmon may be killed during the season.
	Kent	1.2 - 31.10	1.4 - 30.9		
	Leven	1.2 - 31.10	1.4 - 30.9		Byelaw (NW-08/05/03) requiring release of all salmon after capture.
	Crake	1.2 - 31.10	1.4 - 30.9		Byelaw (NW-08/05/03) requiring release of all salmon after capture.
	Duddon	1.2 - 31.10	1.4 - 30.9		
	Esk (Cumbrian)	1.2 - 31.10	1.4 - 30.9		
	Irt	1.2 - 31.10	1.4 - 30.9		
	Calder	1.2 - 31.10	1.4 - 30.9		
	Ehen	1.2 - 31.10	1.4 - 30.9		
	Derwent	1.2 - 31.10	1.4 - 30.9		
	Ellen	1.2 - 31.10	1.4 - 30.9		
	Eden	15.1 - 14.10	1.4 - 30.9		Salmon:16/6-14/10 daily bag 2,10/9-14/10 C&R (F).Sea trout:1/4-30/9 daily bag 2,10/9-30/9 C&R(F)
	Esk (Border)	1.2 - 31.10	1.4 - 30.9		Salmon:16/6-14/10 daily bag 2,10/9-14/10 C&R (F).Sea trout:1/4-30/9 daily bag 2,10/9-30/9 C&R(F)
Others	1.2 - 31.10	1.4 - 30.9			
Notes	(a) Season 3.3 to 25.10 Rivers Irfon, Ithon and main River Wye upstream of Llanwrthwl Bridge Note: EA Wales - variations apply to Anglesey and Llleyn Peninsula (check local byelaws).			* National spring salmon byelaws apply Please always check local byelaws and club rules before fishing.	

Table 6 Main Updates for Rod & Net fisheries in 2011

	Area	
National	England & Wales	<p>January 2011 saw the Introduction of Authorisations, Section 27A of Salmon and Freshwater Fisheries Act 1975. Adult eel and elver exploitation was moved from a licensed activity to an authorised activity under this new legislation.</p> <p>Introduction of new authorised fisheries for smelt and lamprey under SaFFA 27A. Lamprey and smelt were species added through the introduction of the Marine and Coastal Access Act 2009 and Authorisation was the mechanism in which to regulate exploitation.</p> <p>There were no changes in the methods used to take salmon and sea trout in England and Wales in 2011 and few statutory changes. However, a new NLO was confirmed in 2011 reducing the number of seine net licences issued on the River Exe from 11 to 3. Compensation payments were made enabling an immediate reduction in the number of nets to the new level.</p>

**Section 6
Table 7**

Salmon Net Catches – 2011 Season

Environment Agency Region	River/ Fishery	Fishing Method	No. Lics	Phase Out NLO									Un-Known	Total Number	Total Weight (kg)	Average Weight (kg)	
					Feb	Mar	Apr	May*	Jun	Jul	Aug	Sep					
North East Northumbria	Coastal (N)	Drift nets	12 (a)	X	-	-	-	-	4,876	4,761	4,374	-	0	14,011	53,839	4	
		T nets	26 (a)		-	0	0	0	2,499	2,893	3,357	-	0	8,749	33,365	4	
	Coastal (S)	Drift nets	0	X	-	-	-	-	-	-	-	-	-	0	-	-	
		T nets	1		-	0	0	-	0	0	0	-	-	0	0	0	
	North East Yorkshire	Coastal	Drift nets	2	X	-	-	-	-	338	340	226	-	0	904	4,021	4
T or J nets			34		-	0	0	0	185	209	90	-	0	484	1,851	4	
	Whole area	Total	75		-	0	0	0	7,898	8,203	8,047	0	0	24,148	93,076	4	
Anglian	Coastal	Drift nets	20	X	-	-	0	0	0	0	0	1	0	1	3	3	
		Other nets (var.)	6	X	-	-	0	1	2	0	1	0	0	4	11	3	
	Whole area	Total	26		-	-	0	1	2	0	1	1	0	5	14	3	
Southern	Solent area	Seine nets	1		-	-	-	-	0	0	-	-	0	0	0	0	
		Total	1		-	-	-	-	0	0	-	-	0	0	0	0	
South West	Avon + Stour**	Seine nets	2		-	-	-	-	22	17	-	-	0	39	198	5	
	Poole Harbour	Seine net	1		-	-	-	-	0	1	-	-	0	1	3	3	
	Exe	Seine nets	3		-	-	-	-	27	39	77	-	0	143	458	3	
	Teign	Seine nets	3		-	-	0	0	37	37	-	-	0	74	278	4	
	Dart	Seine nets	3		-	-	0	0	0	2	14	-	0	16	49	3	
	Camel	Drift nets	6		-	-	-	-	38	-	-	-	0	38	150	4	
	Tavy	Seine nets	2		-	-	-	-	0	0	0	0	0	0	0	0	
	Tamar	Seine nets	3		-	-	-	-	0	0	0	0	0	0	0	0	
	Lynher	Seine nets	1		-	-	-	-	0	0	0	0	0	0	0	0	
	Fowey	Seine nets	1		-	0	0	0	0	0	-	-	0	0	0	0	
	Taw/Torridge	Seine nets	3	X	-	0	-	8	22	22	-	-	0	52	219	4	
	Whole area	Total	28		-	0	0	8	146	118	91	-	0	363	1,355	4	
	Midlands	Severn	Draft net	2	X	-	-	-	-	0	3	0	-	0	3	17	6
Lave nets			24 (b)	X	-	-	-	-	67	32	55	-	0	154	694	5	
Putcher Rank			1		-	-	-	-	8	4	2	-	0	14	64	5	
Whole area		Total	27		-	-	-	-	75	39	57	-	0	171	775	5	
Environment Agency Wales	Wye	Lave nets	8		-	-	-	-	1	1	4	-	0	6	22	4	
		Seine nets	3		-	0	0	0	17	12	0	-	0	29	131	5	
		Coracle nets	8		-	0	0	0	35	22	-	-	0	57	225	4	
		River total	11		-	-	-	-	52	34	0	-	0	86	356	4	
	Taf	Wade net	1		-	-	-	-	0	0	-	-	0	0	0	0	
		Coracle net	1		-	-	-	-	0	0	0	-	0	0	0	0	
		River total	2		-	-	-	-	0	0	0	-	0	0	0	0	
	E+W.Cleddau	Compass nets	6		-	-	-	-	13	0	1	0	0	14	63	5	
		Seine net	0		-	-	-	-	0	0	0	-	0	0	0	0	
	Nevern	Seine nets	3		-	-	0	0	14	0	25	-	0	39	141	4	
		Coracle nets	12		-	-	0	2	17	5	45	-	0	69	261	4	
		River total	15		-	-	-	2	31	5	70	-	0	108	402	4	
	Dyfi	Seine nets	3		-	-	0	0	0	0	0	-	0	0	0	0	
		Seine net	1		-	-	-	-	-	0	0	-	0	0	0	0	
	Dysynni	Seine nets	2		-	-	-	-	0	2	0	-	0	2	8	4	
		Seine nets	0		-	-	-	-	0	0	0	-	0	0	0	0	
	Mawddach	Seine nets	0		-	-	-	-	0	0	0	-	0	0	0	0	
		Basket trap	0		-	-	-	-	0	0	0	-	0	0	0	0	
	Glaslyn	Seine nets	3		-	-	-	-	0	6	8	-	0	14	48	3	
		River total	3		-	-	-	-	0	6	8	-	0	14	48	0	
		Trammel nets	0	X	-	-	-	-	0	0	0	-	0	0	0	0	
	Conwy	Draft nets	0	X	-	-	-	-	0	0	0	-	0	0	0	0	
		River total	0		-	-	-	-	0	0	0	-	0	0	0	0	
Dee	Total	51		-	-	-	-	2	97	48	83	-	0	230	899	4	
	Whole area	Total	51		-	-	-	-	2	97	48	83	-	0	230	899	4
North West	Ribble	Drift nets	5		-	-	-	-	27	36	35	0	0	98	498	5	
		Haaf nets	12		-	-	-	-	0	14	28	83	0	0	125	524	4
		Drift nets	7		-	-	-	-	23	64	66	-	0	153	591	4	
		Seine net	0	X	-	-	-	-	0	0	0	-	0	0	0	0	
	Kent	River total	19		-	-	-	-	37	92	149	-	0	278	1,115	4	
		Lave nets	7		-	-	-	-	1	5	6	-	0	12	44	4	
		Lave nets	2		-	-	-	-	-	0	0	-	0	0	0	0	
	Eden + Esk (Solway)	Haaf nets	64		-	-	-	-	0	61	142	207	60	0	470	1,944	4
		Coop nets	3		-	-	-	-	16	6	35	0	0	57	264	5	
	Eden	Total	100		-	-	-	-	142	281	432	60	0	915	3,865	4	
		Whole area	Total	100		-	-	-	-	142	281	432	60	0	915	3,865	4
	England and Wales			308		-	0	0	11	8,360	8,689	8,711	61	0	25,832	99,984	3.87

Key: (a) Separate licences for drift and T nets were issued for the first time in the northern area in 1993. (b) Figures for half- and full-season lave nets combined.
(X) Denotes that a phase out Net Limitation Order (NLO) is in place.

Notes: * Salmon caught pre 1 June released alive
- A dash is used to denote months that fall entirely within the annual close season.
** Avon/Stour - all salmon released following capture. Poole Harbour - July fish tagged (CWCT) and released

Section 6
Table 8

Sea Trout Net Catches – 2011 Season

Environment Agency Region	River/ Fishery	Fishing Method	No. Lics	Phase Out NLO	Feb*	Mar*	Apr*	May*	Jun	Jul	Aug	Sep	Un-known	Total Number	Total Weight (kg)	Average Weight (kg)	
North East Northumbria	Coastal (N)	Drift nets	12 (a)	X	-	-	-	-	1,964	860	877	-	0	3,701	7,999	2	
		T nets	26 (a)		-	-	77	809	6,239	4,868	2,197	-	0	14,190	22,125	2	
North East Yorkshire	Coastal (S)	Drift nets	0	X	-	-	-	-	-	-	-	-	0	-	-	-	
		T nets	1		-	0	0	0	1	0	0	-	-	1	2	2	
	Coastal	Drift nets	2	X	-	-	-	-	251	223	146	-	0	620	1,685	3	
		T or J nets	34		-	1	48	1,344	4,965	2,736	1,085	-	0	10,179	18,584	2	
	Whole area	Total	75		-	1	125	2,153	13,420	8,687	4,305	0	0	28,691	50,395	2	
Anglian	Coastal	Drift nets	20	X	-	-	31	23	63	46	75	178	0	416	516	1	
		Other nets (var.)	6	X	-	-	2	8	10	3	14	34	0	71	129	2	
		Total	26		-	0	33	31	73	49	89	212	0	487	645	1	
Southern	Solent Area	Seine nets	1		-	-	-	-	0	9	-	-	0	9	16	2	
South West	Avon + Stour	Seine nets	2		-	-	-	-	125	73	-	-	0	198	399	2	
	Poole Harbour**	Seine net	1		-	-	-	-	1	0	-	-	0	1	2	2	
	Exe	Seine nets	3		-	-	-	-	3	0	0	-	0	3	4	1	
	Teign	Seine nets	3 (b)		-	-	10	80	88	22	-	-	0	200	253	1	
	Dart	Seine nets	3 (b)		-	-	44	12	7	0	0	-	0	63	122	2	
	Tavy	Seine nets	2		0	0	0	0	0	0	0	0	0	0	0	0	
	Tamar	Seine nets	3		0	0	0	0	0	0	0	0	0	0	0	0	
	Lynher	Seine nets	1		0	0	0	0	0	0	0	0	0	0	0	0	
	Camel	Drift nets	6		-	-	-	-	3	-	-	-	-	3	7	2	
	Fowey	Seine nets	1 (b)		-	0	0	0	0	0	0	-	-	0	0	0	
	Taw/Torridge	Seine nets	3	X	-	-	-	15	59	33	-	-	0	107	86	1	
		Whole area	Total	28		-	0	54	107	286	128	0	-	0	575	873	2
	Midlands	Severn	Draft net	2	X	-	-	-	-	0	0	0	-	-	0	0	0
Lave nets			24 (b)	X	-	-	-	-	0	0	0	-	-	0	0	0	
Putcher rank			1		-	-	-	-	0	0	0	-	-	0	0	0	
Total			27		-	-	-	-	0	0	0	-	-	0	0	0	
Environment Agency Wales	Tywi	Seine nets	3 (b)		-	7	66	74	165	24	-	-	0	336	675	2	
		Coracle nets	8 (b)		-	25	121	250	176	22	-	-	0	594	1,498	3	
		River total	11		-	32	187	324	341	46	-	-	0	930	2,173	2	
	Taf	Wade net	1		-	-	-	-	0	0	-	-	0	0	0	0	
		Coracle net	1 (b)		-	-	0	0	0	0	-	-	0	0	0	0	
		River total	2		-	-	0	0	0	0	0	-	0	0	0	0	
	E+W.Cleddau	Compass nets	6		-	-	-	-	2	0	0	0	0	2	3	2	
		Teifi	Seine nets	3 (b)		-	-	10	118	92	2	2	-	0	224	392	2
		Coracle nets	12 (b)		-	-	80	429	162	8	17	-	0	696	1,293	2	
		River total	15		-	-	90	547	254	10	19	-	0	920	1,685	2	
	Dyfi	Seine nets	3 (b)		-	-	3	13	14	5	1	-	0	36	79	2	
	Dysynni	Seine net	1		-	-	-	-	-	3	5	-	0	8	14	2	
	Mawddach	Seine nets	2		-	-	-	-	0	0	1	-	0	1	4	4	
	Nevern	Seine nets	0		-	-	-	-	0	0	0	-	0	0	0	0	
	Conwy	Seine nets	3		-	-	-	-	0	8	1	-	0	9	13	1	
	Clwyd	Sling nets	0	X	-	-	-	-	-	-	-	-	-	-	-	-	
	Dee	Seine nets	0	X	-	-	-	-	-	-	0	-	0	0	0	0	
		Whole area	Total	43		0	32	280	884	611	72	27	0	0	1,906	3,971	2
	North West	Ribble	Drift nets	5		-	-	-	-	5	1	0	0	0	6	17	3
Lune			Haaf nets	12		-	-	-	0	81	14	1	0	0	96	137	1
			Drift nets	7		-	-	-	-	29	9	2	-	0	40	101	3
			Seine net	0	X	-	-	-	-	0	0	0	-	0	0	0	0
			River total	19		-	-	-	-	110	23	3	-	0	136	238	2
Kent		Lave nets	7		-	-	-	-	0	0	0	-	0	0	0	0	0
		Leven	Lave nets	2		-	-	-	-	0	0	0	-	0	0	0	0
		Solway	Haaf nets	64		-	-	-	-	134	11	0	1	0	146	174	1
		Eden	Coop nets	3		-	-	-	-	1	1	1	-	0	3	6	2
			Whole area	Total	100		-	-	-	0	250	36	4	1	0	291	435
England and Wales			300	0	0	0	33	492	3,175	14,640	8,981	4,425	213	0	31,959	56,335	1.76
<p>Key: (a) Separate licences for drift and T nets were issued for the first time in the northern area in 1993. (b) Sea trout fisheries exempted from national byelaws (X) Denotes that a phase out Net Limitation Order (NLO) is in place.</p> <p>Notes: Both the River Wye and Severn net fisheries are prohibited to catch sea trout as such they are not included in this table A dash denotes months that fall entirely within the annual close season. ** All sea trout tagged (GWCT) and released following capture * Sea trout caught pre 1 June released alive</p>																	

Section 6
Table 9

Salmon Rod Catches (released totals in brackets) – 2011 Season

Environment Agency Region	River	Jan	Feb	Mar	Apr	May	Jun	Jul	Aug	Sep	Oct	Nov	Dec	Un-known	Total Number	
North East	Aln	- -	2 (2)		6 (6)	6 (6)	1 (1)	2 (0)	7 (3)	19 (12)	28 (16)	- -	- -	- -	71 (46)	
	Coquet	- -	2 (2)	4 (4)	5 (5)	15 (15)	41 (15)	95 (27)	149 (50)	174 (87)	272 (183)	- -	- -	- -	757 (388)	
	Esk (Yorks.)	- -	- -	- -	1 (1)	- -	1 (1)	13 (3)	20 (4)	32 (22)	61 (45)	- -	- -	- -	128 (76)	
	Ouse (Yorks.)	- -	- -	- -	1 (1)	13 (13)	14 (12)	3 (3)	7 (5)	9 (9)	35 (33)	- -	- -	- -	82 (76)	
	Tees	- -	- -	1 (1)	- -	- -	7 (4)	6 (6)	11 (5)	16 (8)	51 (35)	- -	- -	- -	92 (59)	
	Tyne	2 (2)	34 (31)	86 (86)	45 (45)	209 (207)	268 (139)	445 (196)	1093 (549)	1696 (1011)	1640 (1211)	12 (9)	- -	- -	100 (60)	5630 (3546)
	Wear	- -	1 (1)	3 (3)	1 (1)	21 (19)	108 (65)	114 (84)	206 (119)	389 (225)	688 (478)	1 -	- -	- -	81 (46)	1613 (1041)
	Total	2 (2)	39 (36)	94 (94)	59 (59)	264 (260)	440 (237)	678 (319)	1493 (735)	2335 (1374)	2775 (2001)	13 (9)	0 (0)	181 (106)	8373 (5232)	
South East	Beaulieu	- -	- -	- -	- -	1 (1)	- -	- -	- -	- -	- -	- -	- -	- -	1 (1)	
	Itchen (a)	- -	- -	- -	5 (5)	10 (10)	22 (21)	42 (42)	88 (88)	53 (53)	5 (5)	- -	- -	1 (1)	226 (225)	
	Ouse (Sussex)	- -	- -	- -	- -	- -	- -	2 (0)	- -	- -	- -	- -	- -	- -	2 (0)	
	Test (a)	1 (1)	- -	1 (1)	1 (1)	9 (9)	22 (20)	19 (18)	58 (56)	72 (63)	3 (3)	- -	- -	- -	186 (172)	
	Total	1 (1)	0 (0)	(1) 1	(6) 6	(20) (20)	44 (41)	63 (60)	(146) 144	(125) 116	(8) (8)	0 (0)	0 (0)	1 (1)	415 (398)	
South West	Avon (Devon)	- -	- -	- -	- -	- -	- -	- -	1 (1)	3 (2)	18 (16)	17 (14)	- -	- -	39 (33)	
	Avon (Hants.)	- -	1 (1)	4 (4)	17 (17)	28 (28)	20 (20)	35 (35)	33 (33)	- -	- -	- -	- -	- -	138 (138)	
	Axe	- -	- -	- -	- -	- -	2 (2)	- -	1 -	2 -	13 (12)	- -	- -	- -	18 (14)	
	Brit	- -	- -	- -	- -	- -	- -	- -	- -	- -	1 (1)	- -	- -	- -	1 (1)	
	Camel	- -	- -	- -	- -	1 (1)	8 (5)	6 (4)	13 (4)	36 (15)	95 (55)	82 (53)	36 (19)	6 (4)	283 (160)	
	Dart	- -	- -	1 (1)	2 (2)	- -	12 (8)	8 (5)	25 (24)	35 (29)	3 (3)	2 (2)	- -	- -	88 (74)	
	Erme	- -	- -	- -	- -	- -	1 -	- -	3 (2)	1 (1)	3 (1)	- -	- -	- -	8 (4)	
	Exe	- -	1 (1)	9 (9)	6 (6)	11 (11)	48 (34)	64 (38)	120 (66)	284 (175)	57 (45)	1 (1)	- -	- -	601 (386)	
	Fal	- -	- -	- -	- -	- -	1 (1)	- -	- -	- -	- -	- -	- -	- -	1 (1)	
	Fowey	- -	- -	- -	1 (1)	- -	2 (1)	9 (5)	6 (5)	9 (7)	41 (31)	29 (19)	29 (20)	- -	126 (89)	
	Frome	- -	- -	1 (1)	- -	6 (6)	18 (18)	15 (15)	20 (18)	9 (9)	17 (17)	- -	- -	- -	86 (84)	
	Lyn	- -	- -	1 -	1 (1)	5 (3)	34 (21)	21 (12)	18 (12)	32 (19)	5 (5)	6 (1)	3 (1)	3 (3)	129 (78)	
	Lynher	- -	- -	- -	- -	- -	8 (2)	8 (2)	4 (3)	14 (10)	19 (15)	- -	- -	- -	53 (32)	
	Piddle	- -	- -	1 (1)	- -	- -	- -	- -	- -	- -	- -	- -	- -	- -	1 (1)	
	Plym	- -	- -	- -	- -	- -	- -	- -	3 (1)	4 (2)	3 (2)	9 (6)	12 (9)	- -	31 (20)	
	Tamar	- -	- -	- -	3 (3)	6 (6)	37 (30)	36 (24)	40 (23)	67 (50)	44 (29)	5 (5)	- -	1 (1)	239 (171)	
	Tavy	- -	- -	- -	- -	- -	4 (1)	8 (6)	3 (3)	42 (25)	8 (4)	- -	- -	- -	65 (39)	
	Taw	- -	- -	32 (32)	7 (7)	1 (1)	32 (19)	52 (34)	75 (47)	151 (106)	- -	- -	- -	3 (1)	353 (247)	
	Teign	- -	3 (3)	1 (1)	2 (2)	3 (3)	15 (10)	4 (3)	15 (12)	43 (31)	10 (8)	- -	- -	- -	96 (73)	
Torridge	- -	- -	12 (12)	2 (2)	- -	2 (2)	6 (4)	4 (3)	23 (19)	6 (6)	- -	- -	- -	1 (1)	56 (49)	
Yealm	- -	- -	- -	- -	- -	- -	- -	- -	- -	1 -	2 -	4 (3)	- -	7 (3)		
	Total	0 (0)	5 (5)	62 (61)	41 (41)	61 (59)	244 (174)	272 (187)	384 (257)	755 (500)	344 (250)	153 (101)	84 (52)	14 (10)	2419 (1697)	

Section 6

Table 9 (continued)

Salmon Rod Catches (released totals in brackets) – 2011 Season

Environment Agency Region	River	Jan	Feb	Mar	Apr	May	Jun	Jul	Aug	Sep	Oct	Nov	Dec	Un-known	Total Number	
Midlands	Severn	-	-	1 (1)	14 (14)	23 (23)	61 (61)	90 (43)	57 (18)	46 (21)	42 (23)	7 (3)	-	-	20 (14)	361 (221)
	Trent	-	-	-	-	-	-	-	-	-	1 (1)	-	-	-	-	1 (1)
	Total	0 (0)	1 (1)	14 (14)	23 (23)	61 (61)	90 (43)	57 (18)	46 (21)	43 (24)	7 (3)	0 (0)	0 (0)	20 (14)	362 (222)	
Environment Agency Wales	Afan	-	-	-	-	-	-	2 (0)	5 (1)	3 (1)	-	-	-	-	10 (2)	
	Artro	-	-	-	-	-	-	-	-	2 (1)	1 (0)	-	-	-	3 (1)	
	Cleddau (E&W)	-	-	-	4 (4)	1 (1)	9 (4)	8 (1)	5 (1)	16 (8)	3 (2)	-	-	-	46 (21)	
	Clwyd	-	-	-	-	-	11 (7)	8 (4)	24 (15)	71 (49)	39 (35)	-	-	-	153 (110)	
	Conwy	-	-	-	-	3 (3)	4 (2)	12 (5)	28 (11)	95 (46)	24 (18)	4 (3)	-	-	2 (1)	172 (89)
	Dee	-	-	11 (11)	6 (6)	6 (6)	47 (17)	68 (26)	133 (78)	354 (169)	150 (108)	-	-	-	3 (1)	778 (422)
	Dwyfachr	-	-	-	-	-	-	-	-	4	1 (1)	-	-	-	-	5 (1)
	Dwyfawr	-	-	-	-	-	-	-	-	5 (1)	10 (6)	1 (0)	-	-	-	16 (7)
	Dwryyd	-	-	-	-	-	-	3 (0)	-	4 (0)	1 (0)	-	-	-	-	8 (0)
	Dyfi/ Dovey	-	-	-	1 (1)	-	11 (3)	13 (3)	7 (3)	80 (28)	50 (29)	3 (3)	-	-	21 (9)	186 (79)
	Glaslyn	-	-	-	-	1 (1)	3 (1)	4 (3)	10 (7)	7 (3)	4 (3)	-	-	-	-	29 (18)
	Gwyrfai	-	-	-	-	-	-	-	-	1 (0)	1 (0)	-	-	-	-	2 (0)
	Llyfni	-	-	-	-	1 (1)	-	-	-	2 (0)	-	-	-	-	-	3 (1)
	Loughor	-	-	1 (1)	1 (1)	-	2 (2)	12 (3)	5 (3)	13 (1)	4 (3)	-	-	-	-	38 (14)
	Mawddach	-	-	-	-	1 (1)	13 (5)	13 (7)	32 (18)	57 (32)	15 (9)	-	-	-	2 (2)	133 (74)
	Neath	-	-	-	-	1 (0)	-	6 (1)	10 (1)	18 (3)	33 (8)	9 (4)	-	-	-	77 (17)
	Nevern	-	-	-	-	-	-	3 (0)	3 (0)	3 (2)	12 (5)	1 (0)	-	-	-	22 (7)
	Ogmore	-	-	-	-	-	-	3 (2)	8 (6)	14 (11)	22 (18)	2 (1)	-	-	-	49 (38)
	Ogwen	-	-	-	-	-	-	1 (0)	11 (1)	22 (10)	36 (7)	14 (7)	-	-	-	84 (25)
	Rheidol	-	-	-	-	-	-	3 (2)	8 (5)	6 (2)	7 (5)	7 (4)	-	-	-	31 (18)
	Seiont	-	-	-	-	-	-	-	-	4 (2)	6 (2)	9 (5)	-	-	-	19 (9)
	Taf	-	-	-	-	1 (1)	-	4 (2)	6 (2)	24 (5)	63 (21)	6 (4)	-	-	1 (0)	105 (35)
	Taff	-	-	4 (4)	-	-	-	3 (3)	15 (12)	13 (11)	42 (36)	25 (23)	-	-	-	102 (89)
	Tawe	-	-	1 (1)	-	2 (2)	11 (2)	17 (3)	19 (1)	35 (11)	24 (17)	-	-	-	-	109 (37)
	Teifi	-	-	-	4 (4)	8 (8)	30 (16)	82 (29)	73 (32)	272 (122)	99 (53)	1 (1)	-	-	8 (4)	577 (268)
	Tywi/ Towy	-	-	-	-	13 (13)	14 (14)	32 (16)	69 (34)	95 (34)	289 (101)	80 (53)	-	-	7 (1)	599 (266)
	Usk	-	-	5 (3)	2 (2)	8 (8)	147 (76)	97 (50)	64 (40)	262 (179)	110 (87)	-	1 (1)	11 (8)	707 (454)	
Wye (a)	-	-	24 (24)	34 (34)	121 (118)	148 (140)	76 (70)	66 (54)	107 (100)	116 (102)	1 (1)	-	-	13 (12)	706 (655)	
Ystwyth	-	-	-	-	-	-	-	2 (1)	2 (1)	5 (4)	1 (0)	-	-	-	10 (6)	
Others	-	-	-	1 (1)	-	-	-	-	1 (1)	2 (1)	1	-	-	-	5 (3)	
Total	0 (0)	0 (0)	46 (44)	67 (66)	166 (163)	491 (301)	547 (266)	678 (347)	1912 (964)	798 (568)	9 (8)	1 (1)	68 (38)	4783 (2765)		

Section 6

Table 9(continued)

Salmon Rod Catches (released totals in brackets) – 2011 Season

Environment Agency Region	River	Jan	Feb	Mar	Apr	May	Jun	Jul	Aug	Sep	Oct	Nov	Dec	Un-known	Total Number	
NorthWest	Bela	-	-	-	-	-	-	-	3 (1)	6 (1)	10 (8)	-	-	-	19 (10)	
	Calder	-	-	-	-	-	-	5 (1)	1 (0)	23 (10)	28 (20)	-	-	-	57 (31)	
	Crake	-	-	-	-	-	-	4 (4)	3 (3)	10 (10)	29 (29)	-	-	-	46 (46)	
	Derwent	-	-	2 (2)	1 (1)	-	-	5 (5)	12 (8)	34 (11)	192 (50)	397 (149)	324 (253)	-	11 (2)	978 (481)
	Duddon	-	-	-	-	-	-	1 (1)	-	4 (4)	14 (6)	35 (20)	30 (21)	-	-	84 (52)
	Eden	4 (4)	2 (2)	35 (33)	35 (35)	64 (64)	94 (57)	76 (23)	258 (87)	392 (247)	132 (91)	-	-	-	17 (12)	1109 (655)
	Ehen	-	-	-	-	-	-	2 (2)	6 (2)	18 (4)	73 (16)	146 (44)	146 (87)	-	4 (0)	395 (155)
	Ellen	-	-	-	-	-	-	-	1 (0)	1 (0)	9 (3)	16 (10)	-	-	-	27 (13)
	Esk (Border)	-	-	-	7 (7)	1 (1)	7 (7)	20 (8)	65 (16)	236 (96)	355 (199)	374 (276)	-	-	3 (0)	1068 (610)
	Esk (Cumbrian)	-	-	-	-	-	-	1 (1)	4 (0)	12 (1)	27 (17)	16 (12)	-	-	-	60 (31)
	Irt	-	-	8 (8)	1 (1)	-	-	-	4 (0)	13 (6)	51 (19)	53 (34)	-	-	-	130 (68)
	Kent	-	-	-	-	1 (0)	3 (3)	9 (3)	29 (5)	91 (28)	162 (65)	110 (72)	-	-	-	405 (176)
	Leven	-	-	-	-	-	1 (1)	-	1 (1)	20 (19)	56 (53)	43 (42)	-	-	1 (1)	122 (117)
	Lune	-	-	1 (1)	-	-	7 (7)	19 (5)	37 (17)	173 (74)	393 (197)	442 (325)	-	-	28 (26)	1100 (652)
	Ribble	-	-	-	8 (8)	4 (4)	21 (21)	43 (27)	94 (67)	147 (98)	311 (231)	408 (320)	1 (0)	-	22 (22)	1059 (798)
Wyre	-	-	-	1 (1)	-	-	-	-	-	5 (4)	7 (4)	-	-	-	13 (9)	
	Total	4 (4)	13 (13)	53 (51)	41 (40)	111 (111)	204 (111)	376 (153)	1237 (485)	2378 (1269)	2168 (1604)	1 (0)	0 (0)	86 (63)	6672 (3904)	
	England and Wales	7 (7)	58 (55)	270 (265)	237 (235)	683 (674)	1512 (906)	1987 (996)	3972 (1964)	7551 (4249)	6100 (4434)	176 (118)	85 (53)	370 (232)	23008 (14187)	
Notes:	Reported data from rod licence catch returns only, except where indicated. Totals Includes all fish taken and all fish released. Released fish pre June as recorded on return forms.															
	- Catches from tributaries and from minor rivers with a shared estuary are included under the appropriate main river.															
Key:	(a) Figure quoted above is data from rod catch returns only. Catch data taken from a source other than rod licence returns, ie owners' returns, general licence returns etc. is not used in this table.															

Section 6

Table 10 Sea Trout Rod Catches (released totals in brackets) – 2011 Season

Environment Agency Region	River	Jan	Feb	Mar	Apr	May	Jun	Jul	Aug	Sep	Oct	Nov	Dec	Un-known	Total Number	
North East	Aln	-	-	1 (1)	2 (2)	2 (1)	5 (3)	7 (4)	11 (3)	19 (13)	29 (11)	-	-	-	76 (38)	
	Coquet	-	-	5 (5)	5 (1)	8 (8)	39 (27)	61 (32)	75 (45)	79 (54)	94 (61)	-	-	-	372 (237)	
	Ouse (Yorks.)	-	-	-	3 (3)	11 (11)	28 (27)	11 (9)	4 (4)	5 (5)	2 (2)	-	-	-	64 (61)	
	Esk (Yorks.)	-	-	-	27 (27)	28 (20)	49 (23)	105 (50)	75 (35)	44 (21)	118 (76)	-	-	-	446 (252)	
	Tees	-	-	-	1 (1)	-	1 (1)	-	-	1 (0)	8 (4)	7 (4)	-	-	-	18 (10)
	Tyne	-	1 (1)	7 (7)	13 (10)	51 (43)	136 (67)	323 (154)	426 (227)	325 (200)	336 (238)	1 (0)	-	-	44 (33)	1663 (980)
	Wear	6 (6)	-	3 (3)	9 (8)	58 (51)	196 (139)	378 (237)	419 (264)	402 (268)	258 (200)	1 (0)	-	-	113 (77)	1843 (1253)
	Other	-	-	-	-	-	-	-	-	10 (5)	-	-	-	-	-	10 (5)
	Total	6 (6)	1 (1)	16 (16)	60 (52)	158 (134)	454 (287)	885 (486)	1021 (583)	882 (565)	844 (592)	2 (0)	0 (0)	0 (0)	163 (114)	4492 (2836)
Anglian	Total	0 (0)	0 (0)	0 (0)	0 (0)	0 (0)	0 (0)	0 (0)	0 (0)	0 (0)	0 (0)	0 (0)	2 (2)	0 (0)	2 (2)	
South East	Adur	-	-	-	-	-	-	2 (0)	-	2 (1)	3 (3)	-	-	-	7 (4)	
	Arun	-	-	-	-	-	-	1 (1)	-	-	1 (1)	-	-	-	2 (2)	
	Beaulieu	-	-	-	-	-	8 (5)	35 (26)	19 (7)	7 (7)	6 (5)	-	-	-	75 (50)	
	Itchen	5 (4)	-	-	1 (1)	10 (10)	64 (50)	115 (84)	123 (96)	151 (125)	66 (59)	-	-	48 (43)	583 (472)	
	Lymington	-	-	-	-	-	3 (3)	3 (3)	13 (11)	10 (9)	15 (12)	-	-	-	44 (38)	
	Ouse (Sussex)	-	-	-	4 (3)	-	13 (8)	12 (7)	7 (6)	6 (6)	3 (2)	-	-	-	45 (32)	
	Rother (Eastern)	-	-	-	-	-	1 (0)	4 (1)	-	1 (0)	-	-	-	-	6 (1)	
	Rother (Western)	-	-	-	-	-	3 (3)	3 (1)	4 (3)	-	-	-	-	-	10 (7)	
	Test	-	-	12 (12)	8 (7)	11 (9)	19 (16)	42 (32)	37 (30)	63 (44)	6 (4)	3 (3)	-	-	2 (2)	203 (159)
	Thames	0 (0)	0 (0)	0 (0)	0 (0)	0 (0)	0 (0)	0 (0)	0 (0)	0 (0)	0 (0)	0 (0)	2 (2)	2 (2)	0 (0)	2 (2)
Others	-	-	-	-	1 (1)	-	-	1 (1)	3 (2)	1 (1)	1 (1)	-	-	-	7 (6)	
Total	5 (4)	0 (0)	12 (12)	13 (11)	22 (20)	111 (85)	218 (156)	206 (155)	241 (193)	101 (87)	3 (3)	2 (2)	50 (45)	984 (773)		
South West	Avon (Devon)	-	-	-	2 (0)	14 (12)	6 (4)	9 (7)	14 (10)	14 (12)	1 (1)	-	-	-	60 (46)	
	Avon (Hants.)	-	-	2 (2)	8 (2)	10 (9)	18 (18)	56 (53)	80 (78)	43 (43)	36 (35)	-	-	-	262 (249)	
	Axe	-	-	1 (1)	9 (3)	39 (18)	70 (34)	84 (59)	77 (64)	71 (61)	34 (27)	-	-	-	396 (272)	
	Camel	-	-	-	1 (0)	5 (1)	63 (36)	287 (204)	126 (87)	43 (36)	26 (26)	32 (32)	8 (8)	20 (20)	611 (450)	
	Dart	-	-	4 (1)	33 (11)	76 (37)	112 (61)	114 (81)	117 (86)	95 (86)	-	-	-	2 (1)	553 (364)	
	Erme	-	2 (2)	-	1 (0)	-	2 (0)	18 (15)	38 (30)	26 (24)	20 (19)	-	-	-	107 (90)	
	Exe	-	-	1 (1)	-	1 (0)	1 (0)	2 (1)	4 (2)	7 (7)	1 (1)	-	-	-	17 (12)	
	Fowey	-	-	-	6 (3)	51 (18)	102 (71)	237 (137)	277 (181)	96 (85)	52 (52)	31 (27)	13 (13)	1 (1)	866 (588)	
	Frome	-	-	2 (2)	6 (6)	14 (9)	33 (21)	43 (31)	60 (46)	72 (50)	34 (14)	-	-	-	271 (186)	
	Looe	-	-	-	-	2 (0)	3 (0)	2 (0)	8 (6)	10 (10)	-	-	-	-	25 (16)	
	Lyn	-	-	-	-	1 (1)	9 (5)	16 (10)	21 (15)	11 (11)	4 (4)	2 (2)	-	-	64 (48)	
	Lynher	-	-	-	29 (28)	15 (10)	22 (11)	44 (26)	44 (32)	17 (9)	-	-	-	-	171 (116)	
	Otter	-	-	-	5 (5)	8 (4)	25 (20)	16 (14)	39 (38)	6 (5)	7 (6)	-	-	-	123 (101)	
	Piddle	-	-	-	-	-	10 (9)	10 (8)	4 (4)	6 (5)	-	-	-	-	30 (26)	
	Plym	-	-	1 (0)	13 (9)	22 (10)	19 (8)	41 (16)	55 (24)	43 (22)	19 (17)	10 (10)	4 (2)	10 (10)	237 (128)	
	Stour (SW)	-	-	-	16 (16)	-	18 (18)	4 (4)	6 (6)	10 (10)	8 (8)	-	-	-	62 (62)	
	Tamar	-	-	2 (2)	9 (9)	20 (9)	37 (31)	100 (62)	72 (54)	126 (102)	21 (17)	2 (2)	-	-	430 (325)	
	Tavy	-	-	3 (2)	12 (5)	35 (23)	71 (42)	144 (96)	136 (93)	76 (57)	-	-	-	-	480 (321)	
	Taw	-	-	14 (13)	1 (1)	41 (31)	166 (110)	211 (143)	89 (67)	74 (59)	-	-	-	-	602 (428)	
	Teign	-	-	7 (0)	15 (4)	83 (29)	109 (61)	94 (52)	92 (60)	110 (63)	4 (4)	-	-	-	514 (273)	
Torridge	-	-	3 (3)	6 (6)	4 (4)	44 (37)	51 (32)	34 (28)	55 (48)	1 (1)	-	-	-	202 (162)		
Yealm	-	-	-	-	-	4 (3)	9 (0)	15 (14)	15 (14)	13 (13)	1 (1)	2 (2)	-	59 (47)		
Others	-	-	-	-	16 (16)	19 (16)	25 (24)	9 (6)	3 (2)	2 (2)	-	-	-	74 (66)		
Total	1 (1)	2 (2)	40 (27)	172 (108)	457 (241)	963 (616)	1617 (1075)	1417 (1031)	1029 (821)	283 (247)	78 (74)	27 (25)	131 (109)	6216 (4376)		
Midlands	Severn	-	1 (1)	-	8 (4)	34 (34)	4 (1)	3 (3)	14 (10)	3 (3)	1 (1)	1 (0)	-	-	69 (57)	
	Others	-	-	-	-	-	-	1 (1)	9 (9)	-	-	-	-	-	10 (10)	
	Total	0 0	1 (1)	0 (0)	8 (4)	34 (34)	4 (1)	4 (4)	23 (19)	3 (3)	1 (1)	1 (0)	0 (0)	0 (0)	79 (67)	

Section 6

Table 10 (continued) Sea Trout Rod Catches (released totals in brackets) – 2011 Season

Environment Agency Region	River	Jan	Feb	Mar	Apr	May	Jun	Jul	Aug	Sep	Oct	Nov	Dec	Un-known	Total Number														
Environment Agency Wales	Aeron	-	-	-	-	2	(1)	26	(14)	50	(11)	42	(13)	20	(10)	-	-	-	-	4	(1)	144	(50)						
	Afan	-	-	-	-	57	(57)	-	-	23	(17)	24	(20)	18	(15)	13	(6)	3	(0)	-	-	4	(4)	142	(119)				
	Artro	-	-	-	-	-	-	2	(0)	10	(6)	18	(15)	4	(3)	-	-	-	-	-	-	-	-	34	(24)				
	Cleddau (E&W)	-	-	-	-	9	(9)	26	(25)	183	(111)	205	(135)	70	(54)	33	(24)	3	(3)	-	-	1	(0)	530	(361)				
	Ciwyd	-	-	-	2	(2)	8	(8)	18	(17)	111	(90)	319	(253)	242	(209)	175	(153)	43	(42)	-	-	50	(50)	968	(824)			
	Conwy	-	-	-	-	-	1	(1)	68	(50)	159	(119)	136	(96)	102	(71)	6	(5)	3	(0)	-	-	7	(6)	482	(348)			
	Dee	-	-	-	2	(2)	-	-	3	(3)	88	(68)	144	(103)	134	(101)	97	(84)	24	(24)	-	-	-	-	14	(9)	506	(394)	
	Dwyfach	-	-	-	-	1	(1)	3	(3)	4	(3)	28	(19)	42	(31)	10	(5)	3	(3)	-	-	-	-	-	-	91	(65)		
	Dwyfawr	-	-	-	-	1	(1)	2	(2)	45	(36)	65	(45)	132	(92)	44	(26)	6	(1)	-	-	-	-	-	-	295	(203)		
	Dwryd	-	-	-	-	-	-	-	-	10	(6)	6	(4)	9	(1)	-	-	-	-	-	-	-	-	-	-	25	(11)		
	Dyfi / Dovey	1	(1)	-	-	18	(17)	129	(111)	546	(356)	871	(611)	583	(490)	276	(232)	58	(54)	-	-	-	-	164	(127)	2646	(1999)		
	Dysynni	-	-	-	12	(8)	22	(18)	19	(18)	33	(27)	64	(38)	69	(53)	58	(54)	1	(1)	-	-	-	-	161	(153)	439	(370)	
	Glaslyn	-	-	-	50	(46)	116	(85)	78	(45)	106	(46)	129	(48)	66	(44)	76	(59)	58	(40)	-	-	-	-	1	(0)	680	(413)	
	Gwendraeth Fach	-	-	-	-	-	-	-	-	3	(0)	3	(0)	10	(9)	-	-	1	(1)	-	-	-	-	-	-	17	(10)		
	Gwendraeth Fawr	-	-	-	-	-	-	13	(11)	6	(6)	8	(7)	11	(9)	5	(5)	2	(2)	-	-	-	-	-	-	45	(40)		
	Gwyrfa	-	-	-	-	-	-	-	-	2	(0)	2	(2)	1	(0)	2	(2)	-	-	-	-	-	-	-	-	7	(4)		
	Llyfni	-	-	-	-	-	-	-	-	114	(106)	83	(66)	29	(16)	3	(0)	-	-	-	-	-	-	-	-	229	(188)		
	Loughor	-	-	-	-	-	-	9	(1)	20	(5)	58	(30)	42	(25)	12	(7)	1	(0)	-	-	-	-	5	(4)	147	(72)		
	Mawddach	-	-	-	-	-	-	15	(7)	133	(113)	274	(227)	309	(264)	82	(69)	10	(9)	-	-	-	-	35	(35)	858	(724)		
	Neath	-	-	-	3	(2)	7	(4)	29	(28)	81	(58)	161	(136)	114	(95)	27	(23)	9	(8)	-	-	-	-	13	(13)	444	(367)	
	Nevern	-	-	-	-	-	-	24	(8)	108	(29)	167	(61)	97	(30)	60	(18)	13	(10)	-	-	-	-	31	(7)	500	(163)		
	Ogmore	-	-	-	-	9	(5)	55	(44)	90	(82)	161	(151)	155	(131)	107	(100)	9	(7)	-	-	-	-	-	-	586	(520)		
	Ogwen	-	-	-	-	-	-	14	(10)	24	(21)	69	(36)	88	(48)	36	(16)	2	(1)	-	-	-	-	5	(2)	238	(134)		
	Rheidol	-	-	-	-	-	-	4	(1)	44	(25)	106	(78)	100	(93)	75	(70)	25	(24)	-	-	-	-	-	-	354	(291)		
	Rhymney	-	-	-	-	-	-	-	-	-	-	-	-	1	(1)	-	-	-	-	-	-	-	-	-	-	1	(1)		
	Seiont	-	-	-	-	-	-	-	-	20	(14)	38	(34)	36	(20)	15	(10)	7	(5)	3	(3)	-	-	-	-	119	(86)		
	Taf	-	-	-	-	-	-	29	(25)	48	(19)	42	(20)	113	(93)	90	(73)	3	(1)	-	-	-	-	6	(4)	331	(235)		
	Taff	-	-	-	-	-	-	18	(18)	46	(43)	36	(36)	25	(25)	20	(17)	17	(16)	-	-	-	-	-	-	162	(155)		
	Tawe	-	-	-	-	-	-	5	(4)	32	(19)	59	(47)	34	(24)	43	(39)	6	(4)	-	-	-	-	17	(14)	196	(151)		
	Teifi	1	(1)	-	-	88	(67)	197	(138)	627	(373)	944	(677)	438	(335)	297	(265)	68	(66)	4	(4)	-	-	317	(214)	2981	(2140)		
	Tywi / Towy	-	-	-	-	40	(20)	154	(103)	620	(380)	871	(550)	412	(257)	282	(227)	57	(52)	-	-	-	-	173	(113)	2609	(1702)		
	Usk	-	-	-	-	2	(2)	10	(6)	24	(21)	21	(18)	19	(12)	20	(15)	15	(15)	-	-	-	-	2	(2)	113	(91)		
	Wye	-	-	-	2	(2)	2	(2)	7	(6)	16	(15)	24	(24)	3	(3)	4	(2)	-	-	-	-	-	-	-	58	(54)		
	Ystwyth	-	-	-	-	4	(4)	12	(11)	50	(29)	57	(43)	81	(66)	48	(35)	9	(7)	-	-	-	-	-	-	261	(195)		
	Others	-	-	-	-	-	-	1	(0)	4	(3)	12	(6)	12	(5)	2	(0)	3	(0)	2	(1)	-	-	-	-	36	(15)		
	Total	2	(2)	0	(0)	71	(62)	384	(300)	877	(647)	3347	(2179)	5274	(3663)	3688	(2778)	2147	(1721)	462	(401)	12	(8)	0	(0)	1010	(758)	17274	(12519)

Section 6

Table 10 (continued) Sea Trout Rod Catches (released totals in brackets) – 2011 Season

Environment Agency Region	River	Jan	Feb	Mar	Apr	May	Jun	Jul	Aug	Sep	Oct	Nov	Dec	Un-known	Total Number														
North West	Calder	-	-	-	-	1	(1)	-	-	7	(6)	6	(5)	5	(4)	-	-	-	-	19	(16)								
	Crake	-	-	-	-	-	-	8	(6)	8	(7)	8	(5)	7	(6)	5	(5)	-	-	-	-	36	(29)						
	Derwent	-	-	-	-	1	(1)	17	(14)	62	(55)	122	(103)	64	(54)	41	(28)	22	(21)	-	-	3	(1)	332	(277)				
	Duddon	-	-	-	-	-	-	2	(2)	12	(7)	40	(26)	42	(36)	36	(29)	16	(14)	-	-	-	-	148	(114)				
	Eden (NW)	-	-	-	11	(6)	13	(11)	56	(46)	77	(49)	50	(39)	43	(28)	39	(25)	13	(12)	-	-	1	(0)	303	(216)			
	Ehen	-	-	-	-	-	-	-	5	(3)	29	(23)	180	(160)	187	(173)	75	(69)	46	(43)	-	-	21	(17)	543	(488)			
	Ellen	-	-	-	-	-	-	-	7	(6)	8	(7)	16	(12)	7	(1)	3	(3)	-	-	-	-	-	-	41	(29)			
	Esk (Border)	1	(0)	3	(0)	-	-	1	(1)	43	(26)	287	(160)	325	(216)	223	(165)	101	(93)	75	(74)	-	-	-	-	1,059	(735)		
	Esk (Cumbrian)	-	-	-	-	-	-	-	-	2	(2)	32	(20)	88	(73)	101	(93)	38	(33)	6	(6)	-	-	-	-	267	(227)		
	Irt	-	-	-	-	-	-	-	1	-	11	(5)	35	(22)	79	(69)	71	(60)	30	(29)	-	-	-	-	-	-	227	(185)	
	Keer	-	-	-	-	-	-	-	-	-	-	-	-	-	2	(2)	-	-	-	-	-	-	-	-	-	-	2	(2)	
	Kent	-	-	-	-	-	18	(17)	70	(67)	102	(57)	91	(62)	129	(100)	72	(60)	6	(5)	-	-	-	-	6	(6)	494	(374)	
	Leven	-	-	-	-	-	-	-	-	6	(3)	16	(14)	16	(15)	14	(13)	1	(1)	-	-	-	-	-	-	-	53	(46)	
	Lune	-	-	1	(1)	-	-	5	(2)	57	(53)	195	(104)	383	(276)	235	(172)	164	(124)	39	(35)	-	-	-	-	11	(9)	1,090	(776)
	Ribble	-	-	7	(2)	2	(2)	42	(40)	84	(78)	415	(327)	638	(529)	383	(322)	161	(139)	54	(54)	5	(5)	-	-	47	(43)	1,838	(1541)
	Wyre (NW)	1	(1)	-	-	1	(1)	-	-	-	8	(4)	9	(9)	7	(6)	16	(15)	11	(10)	-	-	-	-	-	-	53	(46)	
	Others	-	-	-	-	-	-	-	-	-	-	-	-	-	9	(4)	-	-	3	(3)	-	-	-	-	-	-	-	12	(7)
	Total	2	(1)	11	(3)	14	(9)	80	(72)	338	(292)	1,251	(826)	2,000	(1549)	1,550	(1261)	847	(699)	330	(315)	5	(5)	0	(0)	89	(76)	6,517	(5108)
	England and Wales	16	(14)	15	(7)	153	(126)	717	(547)	1,886	(1368)	6,130	(3994)	9,998	(6933)	7,905	(5827)	5,149	(4002)	2,021	(1643)	101	(90)	31	(29)	1,443	(1102)	35,564	(25681)
Notes:	Reported data from rod licence catch returns only. Totals Includes all fish taken and all fish released.																												
	Catches from tributaries and from minor rivers with a shared estuary are included under the appropriate main river. The catch from remaining rivers in each region is aggregated and recorded under 'others'.																												

Section 6

Table 11 Rod Caught Salmon & Sea Trout, Average Weight (Kg) - 2011 Season

Environment Agency Region	River	Salmon			Sea trout		
		Total catch	Total est. wt. (kg)	Ave. wt. (kg)	Total catch	Total est. wt. (kg)	Ave. wt. (kg)
North East	Coquet	757	2578	3.41	372	504	1.35
	Esk (Yorks.)	128	489	3.82	446	562	1.26
	Tees	92	392	4.26	18	26	1.44
	Tyne	5630	28174	5.00	1663	2880	1.74
	Wear	1613	7343	4.55	1843	3149	1.71
Southern	Itchen	226	808	3.57	583	697	1.19
	Test	186	653	3.51	203	300	1.48
South West	Avon (Devon)	39	100	2.57	60	57	0.95
	Avon (Hants.)	121	655	5.41	262	151	0.58
	Axe	18	48	2.66	396	456	1.15
	Camel	283	906	3.20	611	335	0.55
	Dart	88	295	3.35	553	665	1.20
	Exe	601	1775	2.95	17	18	1.05
	Fowey	126	383	3.04	866	530	0.61
	Frome	86	375	4.36	271	241	0.89
	Lyn	129	380	2.95	64	35	0.54
	Lynher	53	170	3.21	171	104	0.61
	Tamar	239	790	3.31	430	267	0.62
	Tavy	65	217	3.29	480	407	0.85
	Taw	353	1246	3.53	602	516	0.86
	Teign	96	282	2.93	514	392	0.76
Torridge	56	216	3.85	202	145	0.72	
Midlands	Severn	361	1718	4.76	69	32	0.46
Environment Agency Wales	Aeron	0	0	0.00	144	63	0.44
	Cleddau	46	160	3.47	530	279	0.53
	Clwyd	153	535	3.50	968	552	0.57
	Conwy	172	608	3.54	482	360	0.75
	Dee	778	3070	3.95	506	322	0.64
	Dyfi / Dovey	186	737	3.96	2646	2599	0.98
	Glaslyn	29	107	3.70	680	399	0.59
	Mawddach	133	437	3.29	858	612	0.71
	Nevern	22	87	3.94	500	355	0.71
	Ogmore	49	147	2.99	586	372	0.63
	Ogwen	84	219	2.61	238	179	0.75
	Rheidol	31	92	2.96	354	250	0.71
	Taf	105	344	3.28	331	221	0.67
	Taff	102	395	3.87	162	92	0.57
	Tawe	109	429	3.94	196	182	0.93
	Teifi	577	2295	3.98	2981	1791	0.60
	Tywi / Towy	599	2293	3.83	2609	2387	0.91
Usk	707	3074	4.35	113	92	0.81	
Wye	706	3401	4.82	58	29	0.49	
North West	Derwent	978	4196	4.29	332	250	0.75
	Eden (NW)	1109	4818	4.34	303	218	0.72
	Ehen	395	1385	3.51	543	327	0.60
	Ellen	27	83	3.07	41	21	0.50
	Esk (Border)	1068	4565	4.27	1059	767	0.72
	Esk (Cumbria)	60	214	3.56	267	158	0.59
	Kent	405	1524	3.78	494	381	0.77
	Lune	1100	4876	4.43	1090	879	0.81
Ribble	1059	4694	4.43	1838	1309	0.71	
Notes:	<p>Only those fish with associated weights are included All data taken from rod licence returns including rivers Test, Itchen and Wye Total Weights calculated to nearest whole kg Catches from tributaries and from minor rivers with a shared estuary are included under the appropriate main river.</p>						

Section 6

Table 12

Number of rod caught salmon in weight categories (lb & kg) – 2011 Season

Environment Agency Region	River	0-8 lb (0-3.6 kg)	8-14 lb (3.6-6.4 kg)	14-22 lb (6.4-10 kg)	>22 lb (>10 kg)
North East	Coquet	490	247	20	0
	Esk (Yorkshire)	61	60	7	0
	Tees	43	42	7	0
	Tyne	1565	2944	1066	55
	Wear	656	708	235	14
	Others	71	59	22	1
Southern	Itchen	156	61	8	1
	Test	127	50	8	1
	Others	1	1	1	0
South West	Avon. Devon	36	3	0	0
	Avon. Hants	29	62	25	5
	Axe	16	2	0	0
	Camel	212	67	4	0
	Dart	60	27	1	0
	Exe	465	130	5	1
	Fowey	97	29	0	0
	Frome	40	31	15	0
	Lyn	106	23	0	0
	Lynher	40	12	1	0
	Tamar	158	80	1	0
	Tavy	44	21	0	0
	Taw	239	98	15	1
	Teign	74	22	0	0
	Torridge	37	15	4	0
Others	35	11	3	0	
Midlands	Severn	114	198	44	5
	Others	1	0	0	0
Environment Agency Wales	Aeron	0	0	0	0
	Cleddau	25	19	2	0
	Clwyd	92	57	4	0
	Conwy	104	64	4	0
	Dee	401	321	53	0
	Dyfi / Dovey	94	80	12	0
	Glaslyn	15	13	1	0
	Mawddach	96	30	7	0
	Nevern	13	8	1	0
	Ogmore	35	13	1	0
	Ogwen	69	15	0	0
	Rheidol	24	7	0	0
	Taf	74	28	3	1
	Taff	51	47	3	0
	Tawe	49	57	3	2
	Teifi	286	257	32	1
	Tywi / Towy	331	235	32	0
Usk	287	355	60	9	
Wye	233	355	109	0	
Others	119	69	8	0	
North West	Derwent	441	429	105	3
	Eden (NW)	473	507	127	2
	Ehen	254	111	30	0
	Ellen	20	6	0	1
	Esk (Border)	470	493	102	3
	Esk (Cumbrian)	38	19	3	0
	Kent	223	164	18	0
	Lune	423	546	129	2
	Ribble	486	411	150	12
	Others	336	121	14	0
Notes:	Only those fish with associated weights are included All data taken from rod licence returns Catches from tributaries and from minor rivers with a shared estuary are included under the appropriate main river.				

Section 6

Table 13

Number of rod caught sea trout in weight categories (lb & kg) - 2011 Season

Environment Agency Region	River	0-1 lb (0-0.45 kg)	1-4 lb (0.45-1.8 kg)	>4 lb (>1.8 kg)
North East	Coquet	126	153	93
	Esk (Yorkshire)	105	263	78
	Tees	4	9	5
	Tyne	292	856	515
	Wear	340	877	626
	Others	61	54	35
Southern	Beaulieu	34	30	11
	Itchen	265	195	123
	Lymington	16	26	2
	Ouse (Sussex)	2	7	36
	Test	36	109	58
	Others	0	17	15
South West	Avon. Devon	24	30	6
	Avon. Hants	205	48	9
	Axe	142	187	67
	Camel	449	153	9
	Dart	105	376	72
	Exe	5	10	2
	Fowey	595	245	26
	Frome	153	86	32
	Lyn	55	7	2
	Lynher	114	55	2
	Tamar	305	110	15
	Tavy	208	246	26
	Taw	352	191	59
	Teign	229	271	14
	Torr ridge	152	33	17
Others	427	242	48	
Midlands	Severn	62	7	0
	Others	7	2	1
Environment Agency Wales	Aeron	132	12	0
	Cleddau	400	123	7
	Clwyd	697	249	22
	Conwy	249	210	23
	Dee	324	166	16
	Dyfi / Dovey	1394	942	310
	Glaslyn	535	124	21
	Mawddach	620	177	61
	Nevern	241	237	22
	Ogmore	433	121	32
	Ogwen	116	115	7
	Rheidol	236	100	18
	Taf	240	74	17
	Taff	140	16	6
	Tawe	123	50	23
	Teifi	2164	747	70
	Tywi / Towy	1496	801	312
	Usk	61	47	5
Wye	51	7	0	
Others	1545	624	163	
North West	Derwent	193	128	11
	Eden (NW)	192	98	13
	Ehen	399	131	13
	Ellen	35	6	0
	Esk (Border)	548	478	33
	Esk (Cumbrian)	204	55	8
	Kent	305	153	36
	Lune	496	544	50
	Ribble	1080	695	63
	Others	384	148	18
Notes:	Only those fish with associated weights are included All data taken from rod licence returns. Catches from tributaries and from minor rivers with a shared estuary are included under the appropriate main river.			

Section 6
Table 14

Summary of salmon net catches, 2001- 2011

Environment Agency Region	River/ Fishery	Fishing Method	2001	2002	2003	2004	2005	2006	2007	2008	2009	2010	2011	
North East Northumbria	Coastal (N)	Drift nets	21,805	18,490	5,134	5,323	5,243	3,887	4,423	3,111	2,294	11,544	14,011	
		T nets	3,264	2,811	4,480	4,461	3,129	3,250	1,839	2,154	2,605	7,462	8,749	
North East Yorkshire	Coastal (S)	Drift nets	8,240	7,174	0	0	0	0	0	0	0	0	0	
		T nets	80	0	47	32	16	23	106	84	34	49	0	
	Coastal	Drift nets	2,329	2,021	377	598	364	153	471	538	296	670	904	
		T or J nets	397	484	397	603	235	253	252	354	166	257	484	
Whole area		Total	36,115	30,980	10,435	11,017	8,987	7,566	7,091	6,241	5,395	19,982	24,148	
Anglian	Coastal	Drift nets	0	112	20	53	12	10	4	9	3	1	5	
		Other nets (var.)	0	0	4	0	3	5	3	0	0	0	0	
Whole area		Total	0	112	24	53	15	15	7	9	3	1	5	
Southern	Hants area	Seine nets	0	0	0	0	0	0	0	0	0	0	0	
		Seine nets	0	0	0	0	0	0	0	0	0	0	0	
Whole area		Total	0	0	0	0	0	0	0	0	0	0	0	
South West	Avon + Stour	Seine nets	131	204	66	108	56	57	55	268	58	41	39	
		Seine net	8	19	18	5	6	8	2	8	4	2	1	
	Poole Harbour	Dip nets	0	0	0	0	0	0	0	0	0	0	0	
		Putcher ranks	0	0	0	0	0	0	0	0	0	0	0	
	Parrett	River total	0	0	0	0	0	0	0	0	0	0	0	
		Seine nets	200	514	277	414	287	189	102	137	92	121	143	
	Exe	Seine nets	95	221	265	250	84	111	18	103	66	119	74	
		Seine nets	169	113	197	296	63	47	15	54	42	69	16	
	Dart	Fixed Engine	0	0	0	0	0	0	0	0	0	0	0	
		Drift nets	158	70	83	14	7	0	0	0	6	15	38	
	Avon	Seine nets	20	5	13	0	0	0	0	0	0	0	0	
		Seine nets	176	137	219	0	0	0	0	0	0	0	0	
	Camel	Seine net												
		Seine nets	11	11	29	0	0	0	0	0	0	0	0	
	Tavy	Seine nets	7	7	1	3	4	0	0	0	0	0	0	
		Seine nets	819	103	276	205	65	65	19	17	17	139	52	
	Tamar	Fixed Engine	0	0	0	0	0	0	0	0	0	0	0	
		Total	1,794	1,404	1,444	1,295	572	477	211	587	285	506	363	
	Midlands	Severn	Seine nets	5	20	38	43	25	13	0	0	2	0	3
			Lave nets	186	116	295	380	135	138	68	100	115	110	154
Whole area	Fixed Engines (a)	836	1,054	1,207	346	778	713	608	771	766	128	14		
	Total (a)	1,027	1,190	1,540	769	938	864	676	871	883	238	171		
Environment Agency Wales	Wye	Lave nets	2	6	6	8	7	6	6	4	6	7	6	
		Drift nets	0	0	0	0	0	0	0	0	0	0	0	
Usk	Putcher rank	0	0	0	0	0	0	0	0	0	0	0		
	River total	0	0	0	0	0	0	0	0	0	0	0		
Tywi	Seine nets	16	45	32	71	26	20	16	16	8	20	29		
	Coracle nets	46	63	41	35	20	25	16	29	40	40	57		
Taf	River total	62	108	73	106	46	45	32	45	48	60	86		
	Wade net	0	0	0	0	0	0	0	0	0	0	0		
S.W.Coastal	Coracle net	0	0	1	1	1	0	0	0	0	0	0		
	River total	0	0	0	1	1	0	0	0	0	0	0		
E+W.Cleddau	Wade nets	0	0	0	0	0	0	0	0	0	0	0		
	Seine nets	0	0	0	0	0	0	0	0	0	0	0		
Nevern	River total	0	0	0	0	0	0	0	0	0	0	0		
	Compass nets	60	28	27	25	9	11	8	3	1	13	14		
Teifi	Seine net	0	0	0	0	0	0	0	0	0	0	0		
	Seine nets	0	17	4	1	103	85	1	41	13	56	39		
Dyfi	Coracle nets	60	82	88	51	85	45	15	24	17	78	69		
	River total	60	99	92	52	188	130	16	65	31	134	108		
Dysynni	Seine nets	21	75	1	0	8	0	2	0	0	2	0		
	Seine net	24	2	15	5	5	0	0	0	0	0	0		
Mawddach	Seine nets	1	1	0	0	1	2	0	0	0	0	2		
	Seine nets	0	6	0	0	0	0	0	0	0	0	0		
Glaslyn	Seine nets	0	0	0	0	0	0	0	0	0	0	0		
	Seine nets	0	0	0	0	0	0	0	0	0	0	0		
Dwyfawr	Seine nets	0	0	0	0	0	0	0	0	0	0	0		
	Seine nets	0	0	0	0	0	0	0	0	0	0	0		
N. Caernarfon	Seine nets	0	0	0	0	0	0	0	0	0	0	0		
	Seine nets	0	0	0	0	0	0	0	0	0	0	0		
Seiont/Gwyrfa	Seine nets	0	0	0	0	0	0	0	0	0	0	0		
	Seine nets	0	0	0	0	0	0	0	0	0	0	0		
Ogwen	Seine nets	0	0	0	0	0	0	0	0	0	0	0		
	Basket trap	4	0	0	0	0	0	0	0	0	0	0		
Conwy	Seine nets	13	0	37	28	46	18	11	0	8	7	14		
	River total	17	0	0	28	46	18	11	0	8	7	14		
Clwyd	Sling nets	0	0	0	0	0	0	0	0	0	0	0		
	Trammel nets	500	529	365	331	303	291	471	0	0	0	0		
Dee	Seine nets	250	421	359	414	507	176	67	43	0	0	0		
	River total	750	950	724	745	810	467	538	43	0	0	0		
Whole area		Total	997	1,275	975	970	1,121	679	613	160	93	223	228	
North West	Ribble	Drift nets	130	228	155	295	250	119	266	64	165	95	98	
		Haaf nets	336	271	369	185	662	418	256	86	117	243	125	
Lune	Drift nets	743	1,204	400	473	1,350	686	486	238	129	211	153		
	Seine net	42	56	41	31	59	40	18	17	0	0	0		
Kent	River total	1,121	1,531	810	689	2,071	1,144	760	341	411	454	278		
	Lave nets	159	32	40	8	90	63	4	0	25	26	12		
Leven	Lave nets	7	5	3	5	15	19	4	1	3	2	0		
	Seine net	0	0	0	0	0	0	0	0	0	0	0		
Duddon	Drift nets + var. nets	232	325	98	0	0	0	0	0	0	0	0		
	S&W Cumbria area	Haaf nets + var. nets	1,661	1,197	1,695	1,480	2,752	2,632	1,290	575	407	1,088	527	
Whole area		Total	3,310	3,318	2,801	2,477	5,178	3,977	2,324	981	846	1,665	915	
England and Wales			43,243	38,279	17,219	16,581	16,811	13,578	10,922	8,849	7,505	22,615	25,830	

(a) 1993 Midlands fixed engine, Midlands total and total England/Wales net catch amended from earlier reports
(b) Catches included under Tavy and Tamar as appropriate

N = North
S = South

Section 6
Table 15

Summary of sea trout net catches, 2001-2011

Environment Agency Region	River/ Fishery	Fishing Method	2001	2002	2003	2004	2005	2006	2007	2008	2009	2010	2011
North East Northumbria	Coastal (N)	Drift nets	9,279	7,489	2,433	2,041	1,880	2,731	2,545	2,578	2,828	9,710	3,701
		T nets	10,666	8,287	10,396	8,462	7,373	9,899	6,026	9,800	11,579	29,436	14,149
	Coastal (S)	Drift nets	5,565	5,350	0	0	0	0	0	0	0	0	0
		T nets	774	0	123	33	49	92	127	241	159	323	1
	North East Yorkshire	Coastal	Drift nets	2,907	2,403	278	339	294	258	545	996	662	961
		T or J nets	6,741	6,921	8,541	8,867	9,177	9,512	8,323	11,250	11,729	15,116	10,232
	Whole area	Total	35,932	30,450	21,771	19,742	18,773	22,492	17,566	24,865	26,957	55,546	28,703
Anglian	Coastal	Drift nets	2,195	917	2,021	1,772	862	708	651	509	550	415	417
		Other nets (var.)	212	372	455	281	252	205	201	205	138	56	71
	Whole area	Total	2,407	1,289	2,476	2,053	1,114	913	852	714	688	471	488
Southern	Hants area	Seine nets	24	24	14	7	2	0	2	0	0	1	9
		Seine nets	0	0	0	0	0	0	0	0	0	0	0
	Whole area	Total	24	24	14	7	2	0	2	0	0	1	9
South West	Avon + Stour	Seine nets	450	1,169	449	646	177	242	337	268	257	213	198*
		Seine net	7	5	17	7	15	13	8	8	8	0	1
	Poole Harbour	Dip nets	0	0	0	0	0	0	0	0	0	0	0
		Putcher ranks	0	0	0	0	0	0	0	0	0	0	0
	Parrett	River total	0	0	0	0	0	0	0	0	0	0	0
		Seine nets	5	16	8	5	6	9	10	20	4	1	3
	Exe	Seine nets	146	244	321	315	207	218	117	191	182	188	200
		Seine nets	605	727	564	451	538	75	67	107	160	196	63
	Dart	Fixed Engine	0	0	0	0	0	0	0	0	0	0	0
		Drift nets	40	6	21	1	0	0	0	0	0	0	1
	Avon	Seine nets	14	20	32	0	0	0	0	0	0	0	0
		Seine nets	66	55	44	0	0	0	0	0	0	0	0
	Camel	Seine net	0	0	0	0	0	0	0	0	0	0	0
		Seine nets	5	4	1	0	0	0	0	0	0	0	0
	Tavy	Seine nets	14	3	1	1	0	0	0	0	0	0	0
		Seine nets	676	212	340	151	128	65	43	100	77	93	107
	Tamar	Fixed Engine	0	0	0	0	0	0	0	0	0	0	0
		Seine net	0	0	0	0	0	0	0	0	0	0	0
	Tavy/Tamar (a)	Seine nets	5	4	1	0	0	0	0	0	0	0	0
		Seine nets	14	3	1	1	0	0	0	0	0	0	0
Lynher	Seine nets	676	212	340	151	128	65	43	100	77	93	107	
	Fixed Engine	0	0	0	0	0	0	0	0	0	0	0	
	Whole area	Total	2,028	2,461	1,798	1,577	1,071	622	582	694	688	692	377
Midlands	Severn	Seine nets	0	0	0	0	0	0	0	0	0	0	0
		Lave nets	0	0	0	0	0	0	0	0	0	1	0
		Fixed Engines	0	0	0	0	0	0	0	0	7	0	0
		Total	0	0	0	0	0	0	0	0	7	1	0
Environment Agency Wales	Wye	Lave nets	0	0	0	0	0	0	0	0	0	0	0
		Drift nets	0	0	0	0	0	0	0	0	0	0	0
		Putcher rank	0	0	0	0	0	0	0	0	0	0	0
		River total	0	0	0	0	0	0	0	0	0	0	0
Tywi	Seine nets	613	604	504	567	589	247	400	306	383	311	336	
	Coracle nets	738	555	766	205	324	197	351	367	637	655	594	
	River total	1,351	1,159	1,270	772	913	444	751	673	1,020	966	930	
	Taf	Wade net	0	0	2	0	2	0	0	1	0	0	0
S.W.Coastal	Coracle net	6	39	12	17	17	28	0	0	0	0	0	
	River total	6	39	14	17	19	28	0	1	0	0	0	
	Wade nets	0	0	0	0	0	0	0	0	0	0	0	
	River total	0	0	0	0	0	0	0	0	0	0	0	
E+W.Cleddau	Compass nets	36	10	11	4	10	2	0	5	1	0	2	
	Seine net	0	0	0	0	0	0	0	0	13	6	0	
	Seine nets	170	7	15	13	79	13	38	80	94	222	224	
	River total	502	378	500	396	263	112	90	194	299	786	696	
Dyfi	Seine nets	672	385	515	409	342	125	128	274	407	1,008	920	
	Seine nets	151	210	51	16	90	67	33	29	31	75	36	
	Seine net	88	14	45	42	11	4	0	21	20	16	8	
	Seine nets	1	0	0	0	0	1	0	4	0	0	1	
Mawddach	Seine nets	0	20	0	0	0	0	0	0	0	0	0	
	Seine nets	0	0	0	0	0	0	0	0	0	0	0	
	Seine nets	0	0	0	0	0	0	0	0	0	0	0	
	Seine nets	0	0	0	0	0	0	0	0	0	0	0	
N. Caernarfon	Seine nets	0	0	0	0	0	0	0	0	0	0	0	
	Seine nets	0	0	0	0	0	0	0	0	0	0	0	
	Seine nets	0	0	0	0	0	0	0	0	0	0	0	
	Seine nets	0	0	0	0	0	0	0	0	0	0	0	
Seiont/Gwyrfa	Seine nets	0	0	0	0	0	0	0	0	0	0	0	
	Seine nets	0	0	0	0	0	0	0	0	0	0	0	
	Seine nets	0	0	0	0	0	0	0	0	0	0	0	
	Basket trap	0	0	0	0	0	0	0	0	0	0	0	
Conwy	Seine nets	3	0	8	10	11	3	6	0	2	3	9	
	River total	3	0	8	10	11	3	6	0	2	3	9	
	Sling nets	0	0	0	0	0	0	0	0	0	0	0	
	Trammel nets	5	95	15	15	13	21	16	0	0	0	0	
Clwyd	Seine nets	21	11	35	52	33	0	2	15	0	0	0	
	River total	26	106	50	67	46	21	18	15	0	0	0	
	Whole area	2,334	1,943	1,964	1,337	1,442	695	936	1,022	1,480	2,074	1,906	
	North West	Ribble	Drift nets	37	18	11	32	8	10	5	13	34	6
Lune	Haaf nets	312	238	325	491	274	244	125	248	252	677	96	
	Drift nets	122	35	47	79	86	48	20	25	44	76	40	
	Seine net	54	60	22	35	18	4	6	27	0	0	0	
	River total	488	333	405	637	386	306	156	300	296	753	136	
Kent	Lave nets	24	0	3	0	7	5	4	0	5	6	0	
	Lave nets	3	1	1	1	0	0	0	1	2	0	0	
Leven	Seine net	0	0	0	0	0	0	0	0	0	0	0	
	Seine net	0	0	0	0	0	0	0	0	0	0	0	
Duddon	Drift nets + var. nets	31	9	16	0	0	0	0	0	0	0	0	
	Haaf nets + var. nets	1,618	490	800	701	634	278	253	377	619	640	0	
	Whole area	Total	2,201	851	1,225	1,339	1,027	589	413	679	935	1,433	142
England and Wales			44,926	37,018	29,248	26,055	23,429	25,311	20,351	27,974	30,755	60,218	31,625

*Chris

(a) Catches recorded under Tavy and Tamar as appropriate

N = North
S = South

Section 6
Table 16

Summary of salmon rod catch, 2001-2011

Environment Agency Region	River	2001	2002	2003	2004 (a)	2005	2006	2007	2008	2009	2010	2011
North East	Ain	1	4	55	15	19	9	26	6	28	56	71
	Coquet	649	689	566	1,177	1,108	780	641	842	462	978	757
	Tyne	2,513	2,585	2,163	4,122	3,591	3,795	3,091	3,389	3,073	5,115	5,630
	Wear	436	535	586	1,055	971	823	788	959	716	1,531	1,613
	Tees	81	93	86	208	107	135	159	267	69	69	92
	Ouse (Yorks.)	0	2	8	6	16	22	18	10	20	25	82
	Esk (Yorks.)	33	57	43	189	111	197	145	159	52	172	128
	Others	20	2	0	16	10	13	4	2	1	1	0
	Total	3,733	3,967	3,507	6,788	5,933	5,774	4,872	5,634	4,421	7,947	8,373
Anglian	Unknown	0	0	0	0	0	0	0	0	0	1	0
Thames	Thames	0	0	0	0	0	0	0	0	0	2	0
Southern	Test	215	342	167	459	351	210	256	419	185	110	186
	Itchen	190	189	58	150	87	121	210	289	205	252	226
	Others	0	0	0	0	0	0	0	3	1	4	3
Total	405	531	225	609	438	331	466	711	391	366	415	
South West	Avon (Hants.)	43	104	109	78	132	134	116	67	76	47	138
	Piddle	1	13	5	8	3	1	1	0	2	1	1
	Frome	95	115	57	60	58	57	69	46	35	43	86
	Exe	187	210	146	594	269	187	340	540	355	404	601
	Teign	43	52	47	194	71	63	87	214	72	81	96
	Dart	50	34	37	156	66	49	75	124	68	90	88
	Avon (Devon)	11	53	35	76	31	59	54	61	20	61	39
	Plym	13	19	7	3	6	26	14	23	5	18	31
	Tavy	55	16	14	69	85	76	68	81	55	128	65
	Tamar	114	143	114	316	131	197	169	358	229	387	239
	Lynher	38	30	28	79	74	56	90	67	77	135	53
	Fowey	117	218	113	164	242	254	114	190	98	305	126
	Camel	226	266	307	389	334	355	369	358	206	546	283
	Torridge	13	28	19	89	46	44	56	119	53	69	56
	Taw	126	153	112	317	103	151	345	287	189	178	353
	Lyn	246	206	97	168	56	67	88	117	77	111	129
	Others	18	77	19	39	18	26	16	34	31	24	35
Total	1,396	1,737	1,266	2,799	1,725	1,802	2,071	2,686	1,648	2,628	2,419	
Midlands	Severn	273	195	333	319	430	356	280	294	212	234	361
	Others	0	0	0	0	0	0	0	0	1	1	1
	Total	273	195	333	319	430	356	280	294	213	235	362
Environment Agency, Wales	Wye	733	357	460	788	683	519	675	1,099	620	348	706
	Usk	857	616	305	1,115	772	748	1,158	1,157	491	580	707
	Taff	18	4	0	11	15	21	14	21	20	53	102
	Ogmore	62	51	27	107	33	39	54	76	51	106	49
	Atan	8	7	5	10	6	5	3	9	15	18	10
	Neath	70	90	35	73	37	85	53	99	62	76	77
	Tawe	113	148	61	155	164	184	183	195	114	230	109
	Loughor	13	13	8	38	29	10	39	51	30	60	38
	Tywi	227	390	432	795	507	642	737	720	441	917	599
	Taf	99	41	32	178	103	105	64	92	61	223	105
	E+W.Cleddau	46	34	36	51	40	32	72	102	78	75	46
	Nevern	30	19	34	45	27	65	46	38	17	43	22
	Teifi	616	507	333	1,062	472	552	518	571	325	922	577
	Aeron	7	12	0	18	0	2	1	3	2	3	0
	Ystwyth	11	8	1	9	3	5	10	3	5	11	10
	Rheidol	30	15	12	50	38	27	31	62	16	18	31
	Dyfi	145	49	46	160	114	207	159	197	84	168	186
	Dysynni	2	5	1	5	2	2	2	2	5	4	0
	Mawddach	130	121	101	206	126	118	111	94	51	136	133
	Arto	4	4	0	3	4	7	0	5	2	5	3
	Dwyrnd	17	33	16	42	17	22	10	21	5	4	8
	Glaslyn	11	19	4	30	9	17	29	43	22	22	29
	Dwyfawr	11	8	7	31	11	14	9	18	4	26	16
	Llyfni	11	22	14	9	2	0	4	1	3	6	3
	Gwyrfai	0	0	0	4	1	0	1	1	1	2	2
	Seiont	39	9	12	99	57	50	35	32	12	41	19
	Ogwen	122	68	43	114	125	52	101	121	71	111	84
	Conwy (a)	220	110	147	264	162	157	192	190	144	327	172
	Clwyd	74	49	35	77	18	31	135	176	79	228	153
	Dee	616	493	421	1,080	812	621	683	885	514	800	778
	Others	9	10	4	23	19	16	7	37	11	10	10
	Total	4,351	3,312	2,632	6,652	4,408	4,355	5,136	6,122	3,356	5,573	4,784
	North West	Ribble	349	692	556	1,442	1,094	1,054	1,062	1,372	1,007	1,247
Wyre		11	15	3	26	4	5	8	25	13	10	13
Lune		566	1,127	823	1,893	1,481	1,163	1,152	1,374	808	1,125	1,100
Kent		260	352	233	582	567	493	411	539	367	692	405
Leven		6	7	12	61	65	51	30	38	36	102	122
Duddon		24	17	8	63	58	69	65	125	50	73	84
Esk (Cumbrian)		50	80	20	74	107	104	227	90	27	25	60
Irt		30	76	42	133	131	148	119	119	56	127	130
Calder		14	61	22	51	31	47	16	53	26	73	57
Ehen		164	395	115	344	275	274	330	365	237	588	395
Derwent		1,063	888	466	1,770	1,386	887	1,458	1,286	812	1,248	978
Eilen		10	16	3	29	8	2	6	30	13	43	27
Eden		1,122	963	808	2,622	2,223	1,634	1,407	1,571	1,362	1,431	1,109
Esk (Border)		521	812	431	897	978	808	841	1,065	697	1,230	1,068
Others		19	31	5	35	40	32	19	13	21	60	65
Total	4,209	5,532	3,547	10,022	8,446	6,771	7,151	8,065	5,532	8,074	6,672	
England and Wales		14,383	15,282	11,519	27,336	21,418	19,509	19,984	23,512	15,561	24,826	23,025

Figures include all fish caught, not just retained fish
(a) 2004 figure amended from earlier reports

Section 6
Table 18

Reported Net Effort data for Salmon & Sea Trout - 2011

Environment Agency Region	River/ Fishery	Fishing Method	No. Lics.	Days available (a)	Allowable effort (b) net days (NE)/tides (other)	Utilised effort		% utilised	Average day (NE)/tide (other) per licence	Catch Salmon	Salmon catch per lic.day (NE)/ tide (other)	Catch Sea trout	Sea trout catch per lic. day (NE)/ tide (other)	
						net days	net tides (other)							
North East Northumbria	Coastal (N)	Drift	12 (c)	66	792	696		88	58	14,011	20.13	3701	5.32	
		T nets	26 (c)	113	2938	838		29	32	8,749	10.44	14149	16.88	
North East Yorkshire	Coastal (S)	Drift nets	0	66	0	0		0	0	0	0.00	0	0.00	
		T nets	1	113	113	1		1	1	0	0.00	1	1.00	
	Coastal	Drift nets	2	66	132	106		80	53	904	8.53	620	5.85	
		T or J nets	34	113	3842	1248		32	37	484	0.39	10232	8.20	
Anglian	Coastal	Drift nets	20	130	2600	285	294	11	15	1	0.00	416	1.41	
		Other nets (var.)	6	130	780	81	80	10	13	4	0.05	71	0.89	
South West	Avon + Stour, (Christchurch)	Seine nets	2	45	90	73	105	117	53	0	0.00	19	0.18	
		Seine net	1	45	45	6	6	13	6	0	0.00	0	0.00	
	Poole Harbour	Seine nets	3	55	165	129	126	76	42	143	1.13	3	0.02	
		Seine nets	3	121	363	97	120	33	40	74	0.62	200	1.67	
	Dart	Seine nets	3	100	300	75	140	47	47	16	0.11	63	0.45	
		Seine nets	6	66	396	21	24	6	4	38	1.58	3	0.00	
	Tavy	Seine nets	2	66	132	0	0	-	-	0	-	0	-	
		Seine nets	3	66	198	0	-	-	-	0	-	0	-	
	Lynher	Seine nets	1	66	66	0	-	-	-	0	-	0	-	
		Seine nets	1	131	131	0	0	0	0	0	0.00	0	0.00	
	Taw/Torridge	Seine nets	3	45	135	68	75	56	25	52	0.69	107	1.43	
Seine nets		2	66	132	41	42	32	21	3154	0.00	0	0.00		
Midlands	Severn	Lave nets	24 (e)	66	1584	405	421	27	18	110	0.26	0	0.00	
		Fixed Engines	1 (f)	76	76	13	26	34	26	14	0.54	0	0.00	
		Seine nets	8	66	528	215	291	55	36	6	0.02	0	0.00	
Environment Agency Wales	Wye	Seine nets	3	110	330	264	366	111	122	29	0.08	336	0.92	
		Coracle nets	8	110	880	324	298	34	37	57	0.19	198	0.66	
	Taf	Wade net	1	45	45	4	4	9	4	0	0.00	0	0.00	
		Coracle net	1	110	110	0	0	0	0	0	0.00	0	0.00	
	E+W.Cleddau	Compass nets	6	66	396	75	80	20	13	14	0.18	2	0.03	
		Seine nets	3	109	327	161	197	60	66	39	0.20	224	1.14	
	Teifi	Coracle nets	12	109	1308	566	552	42	46	69	0.13	696	1.26	
		Seine nets	3	109	327	98	99	30	33	0	0.00	36	0.36	
	Dyfi	Seine net	1	66	66	21	21	32	21	0	0.00	8	0.00	
		Seine nets	2	66	132	64	86	65	43	2	0.00	1	0.00	
	Mawddach	Seine nets	0	66	0	0	0	0	0	0	0.00	0	0.00	
		Basket trap	0	92	0	0	0	0	0	0	0.00	0	0.00	
	Glaslyn	Seine nets	3	66	198	41	51	26	17	14	0.27	9	0.18	
		Seine nets	0	66	0	0	0	0	0	0	0.00	0	0.00	
	Conwy	Seine nets	3	66	198	41	51	26	17	14	0.27	9	0.18	
		Seine nets	0	66	0	0	0	0	0	0	0.00	0	0.00	
	North West (e)	Ribble	Drift nets	5	66	330	111	123	37	25	98	0.80	6	0.05
Haaf nets			12	66	792	525	673	85	56	125	0.19	96	0.14	
Lune		Drift nets	7	66	462	225	222	48	32	153	0.69	40	0.18	
		Seine net	0	66	0	0	0	-	-	0	0.00	0	0.00	
Kent		Lave nets	7	66	462	74	72	16	10	12	0.17	0	0.00	
		Lave nets	2	44	88	53	69	78	35	0	0.00	0	0.00	
S&W Cumbria		Drift nets	-	-	-	0	-	-	-	-	-	0	-	
		Haaf nets	64	73	4672	1973	2258	48	35	470	0.21	146	0.06	
Solway?		Eden + Esk	Coop nets	3	66	198	66	132	67	44	57	0.43	3	0.02

Key:
(a) Days available is the total of the open season minus weekly closure periods. Part days included as full days - voluntary closure or buy-outs not taken into account
(b) Allowable effort is number of licences X available days for NE fisheries. Allowable effort for other fisheries is number of licences X available days X 1.4 tides.
(c) Separate licences for drift and T nets were issued for the first time in the northern area in 1993.
(d) Catches included under Tavy and Tamar as appropriate.
(e) Figures for half- and full-season lave nets combined.
(f) Assume all effort utilised
nr = not recorded

Section 6
Table 19

Reported Rod Effort Data for Salmon & Sea Trout – 2011

Environment Agency Region	River	Number of returns with effort data	Number of days fished	Number of days fished per return	(a) Number of salmon and grilse recorded	Catch per licence day	(a) Number of sea trout recorded	Catch per licence day	Days to catch a salmonid
North East	Aln	49	815	16.63	64	0.079	70	0.086	6.08
	Coquet	433	5230	12.08	651	0.124	328	0.063	5.34
	Tyne	2756	23019	8.35	4995	0.217	1439	0.063	3.58
	Wear	669	10548	15.77	1519	0.144	1494	0.142	3.50
	Tees	165	1451	8.79	80	0.055	15	0.010	15.27
	Esk (Yorks.)	192	1557	8.11	116	0.075	418	0.268	2.92
	Ouse (Yorks.)	77	346	4.49	73	0.211	26	0.075	3.49
Thames	Thames	6	21	3.50	0	0.000	2	0.095	10.50
Southern	Test	176	820	4.66	171	0.209	174	0.212	2.38
	Itchen	197	1013	5.14	196	0.193	553	0.546	1.35
	Beaulieu	30	127	4.23	1	0.008	75	0.591	1.67
	Ouse (Sussex)	48	583	12.15	2	0.003	45	0.077	12.40
	Adur	9	54	6.00	0	0.000	7	0.130	7.71
	Lymington	7	81	11.57	0	0.000	31	0.383	2.61
Great Stour	6	40	6.67	0	0.000	3	0.075	13.33	
South West	Avon (Hants.)	183	1454	7.95	112	0.077	238	0.164	4.15
	Stour (SW)	12	143	11.92	0	0.000	62	0.434	2.31
	Piddle	5	49	9.80	1	0.020	30	0.612	1.58
	Frome	91	630	6.92	85	0.135	268	0.425	1.78
	Axe	112	908	8.11	18	0.020	376	0.414	2.30
	Otter	37	363	9.81	0	0.000	123	0.339	2.95
	Exe	286	2550	8.92	572	0.224	13	0.005	4.36
	Teign	137	1396	10.19	95	0.068	491	0.352	2.38
	Dart	142	1335	9.40	86	0.064	396	0.297	2.77
	Avon (Devon)	94	625	6.65	39	0.062	60	0.096	6.31
	Erme	17	239	14.06	8	0.033	105	0.439	2.12
	Yealm	12	154	12.83	7	0.045	52	0.338	2.61
	Plym	35	421	12.03	20	0.048	191	0.454	2.00
	Tavy	95	1246	13.12	64	0.051	468	0.376	2.34
	Tamar	356	1913	5.37	220	0.115	415	0.217	3.01
	Lynher	67	658	9.82	51	0.078	157	0.239	3.16
	Looe	3	24	8.00	0	0.000	25	1.042	0.96
	Fowey	228	2856	12.53	112	0.039	817	0.286	3.07
	Camel	288	3328	11.56	244	0.073	576	0.173	4.06
	Taw	344	2424	7.05	307	0.127	528	0.218	2.90
Torridge	135	923	6.84	53	0.057	197	0.213	3.69	
Lyn	96	369	3.84	117	0.317	64	0.173	2.04	
Midlands	Severn	352	5082	14.44	330	0.065	66	0.013	12.83
Environment Agency Wales	Wye	796	5657	7.11	586	0.104	56	0.010	8.81
	Usk	540	4970	9.20	634	0.128	107	0.022	6.71
	Taff	29	443	15.28	62	0.140	162	0.366	1.98
	Rhymney	3	12	4.00	0	0.000	1	0.083	12.00
	Ogmore	114	1318	11.56	47	0.036	552	0.419	2.20
	Afan	31	420	13.55	10	0.024	139	0.331	2.82
	Neath	97	1521	15.68	40	0.026	387	0.254	3.56
	Tawe	116	1997	17.22	88	0.044	178	0.089	7.51
	Loughor	78	1209	15.50	32	0.026	109	0.090	8.57
	Gwendraeth	10	92	9.20	2	0.022	17	0.185	4.84
	Tywi	1047	12503	11.94	492	0.039	2196	0.176	4.65
	Taf	122	1638	13.43	77	0.047	292	0.178	4.44
	E&W Cleddau	135	2009	14.88	39	0.019	485	0.241	3.83
	NeVERN	74	921	12.45	8	0.009	384	0.417	2.35
	Teifi	690	8483	12.29	488	0.058	2546	0.300	2.80
	Aeron	24	376	15.67	0	0.000	139	0.370	2.71
	Ystwyth	38	383	10.08	10	0.026	249	0.650	1.48
	Rheidol	64	965	15.08	30	0.031	323	0.335	2.73
	Dyfi	266	2444	9.19	154	0.063	2286	0.935	1.00
	Dysynni	62	542	8.74	0	0.000	338	0.624	1.60
	Mawddach	192	2286	11.91	110	0.048	803	0.351	2.50
	Artro	13	110	8.46	3	0.027	34	0.309	2.97
	Dwryrd	7	157	22.43	8	0.051	25	0.159	4.76
	Glaslyn	50	708	14.16	28	0.040	621	0.877	1.09
	Dwyfawr	46	546	11.87	12	0.022	251	0.460	2.08
	Llyfni	19	231	12.16	2	0.009	190	0.823	1.20
	Gwyrffai	9	99	11.00	2	0.020	7	0.071	11.00
	Seiont	44	742	16.86	18	0.024	85	0.115	7.20
	Ogwen	61	1004	16.46	83	0.083	238	0.237	3.13
	Conwy	234	2082	8.90	144	0.069	431	0.207	3.62
	Clwyd	221	2244	10.15	128	0.057	901	0.402	2.18
	Dee	879	9975	11.35	667	0.067	427	0.043	9.12
North West	Ribble	1123	11630	10.36	988	0.085	1721	0.148	4.29
	Wyre	39	346	8.87	13	0.038	46	0.133	5.86
	Lune	902	8438	9.35	1031	0.122	991	0.117	4.17
	Kent	331	3852	11.64	366	0.095	476	0.124	4.57
	Leven	56	418	7.46	87	0.208	40	0.096	3.29
	Duddon	59	518	8.78	84	0.162	140	0.270	2.31
	Esk (Cumbrian)	96	542	5.65	42	0.077	256	0.472	1.82
	Irt	115	904	7.86	122	0.135	217	0.240	2.67
	Calder	31	269	8.68	56	0.208	14	0.052	3.84
	Ehen	190	3659	19.26	365	0.100	538	0.147	4.05
	Derwent	602	5965	9.91	880	0.148	318	0.053	4.98
	Ellen	19	266	14.00	24	0.090	36	0.135	4.43
	Eden	970	11343	11.69	971	0.086	296	0.026	8.95
Esk (Border)	633	4931	7.79	955	0.194	970	0.197	2.56	

Notes: Effort data is reported for both salmon and sea trout and can not be separated. (a) The table includes only returns upon which the number of days fished were reported. Some returns contained data for two or more rivers.

Section 6
Table 20

Estimated Proportions of Grilse &
Multi- Sea Winter (MSW) Salmon in Declared Rod Catch- 2011

Environment Agency Region	River	Number of grilse	% grilse	Number of MSW	% MSW
North East	Coquet	559	74	193	26
	Tyne	2266	42	3149	58
	Wear	867	57	642	43
Southern	Test	122	71	49	29
	Itchen	149	68	69	32
South West	Frome	42	49	44	51
	Exe	456	78	125	22
	Teign	73	76	23	24
	Dart	64	73	24	27
	Tavy	51	82	11	18
	Tamar	157	70	68	30
	Lynher	40	75	13	25
	Fowey	108	90	12	10
	Camel	233	88	31	12
	Taw	194	60	127	40
	Torridge	30	56	24	44
	Lyn	84	71	34	29
	Midlands	Severn	83	27	229
Environment Agency Wales	Wye	219	33	446	67
	Usk	343	50	343	50
	Ogmore	40	82	9	18
	Tawe	62	54	52	46
	Tywi	381	67	187	33
	Taf	80	82	17	18
	E&W Cleddau	27	56	21	44
	Teifi	367	65	196	35
	Dyfi	121	69	55	31
	Mawddach	93	78	27	23
	Ogwen	73	90	8	10
	Conwy	129	78	37	22
	Dee	500	64	276	36
	North West	Ribble	585	59	414
Lune		733	62	446	38
Kent		297	74	106	26
Leven		75	77	23	23
Irt		103	84	20	16
Ehen		302	78	83	22
Derwent		554	62	341	38
Eden		559	51	533	49
Esk (Border)		683	64	386	36
Total			11904	57	8893
Notes:	The grilse/MSW split is attributed only to fish with a declared capture date and weight The splitting model uses monthly age-weight data collected from the fish trap on the River Dee, Wales				

Section 6
Table 21

Salmon Stocking – number of eggs, fry, parr and smolts released - 2011

Environment			Unfed	Fed	0+	1+	1+	2+	
Agency Region	River	Tributary	Ova	Fry	Fry	Parr	Parr	Smolts	
North East	MainTyne	Main river (plus var. tribs.)	0	0	0	0	0	0	
	South Tyne	Main River (plus var. tribs.)	0	0	0	0	22,500	0	
	North Tyne	Main River (tribs + Kielder Burn)	0	0	0	20,000	15,000	0	
	Rede	Main River (plus var. tribs.)	0	0	0	0	18,500	0	
	Esk (Yorks.)		0	0	0	0	0	0	
	Total		0	0	0	20,000	56,000	0	
Thames	Thames	Main River	0	0	0	0	0	0	
		Kennet	0	0	0	0	22,800	7,455	
	Total		0	0	0	0	22,800	7,455	
Southern	Itchen (Egg box)		0	0	0	0	0	0	
	Total		0	0	0	0	0	0	
South West	Lynher		0	0	52,520	0	0	0	
	Axe		0	0	0	0	0	0	
	Tamar		0	0	63,000	0	0	0	
	Haddeo		0	0	0	0	0	0	
	Lowman		0	0	0	0	0	0	
	Torridge		0	20,100	0	0	0	0	
	Fowey (plus tribs.)		0	0	47,000	0	0	0	
	Camel (plus tribs.)		0	0	42,800	0	0	0	
	Total		0	20,100	205,320	0	0	0	
Midlands	Severn	Teme	0	0	26,500	12,000	0	12,000	
		Tanat	0	0	0	22,480	0	0	
		Clun	0	0	0	2,500	0	0	
		Rea	0	0	0	0	0	0	
		Main river (plus var. tribs.)	0	0	0	45,350	0	0	
	Trent	Dove	0	0	0	120,000	0	0	
		Dove (River Churnet)	0	0	0	22,000	0	0	
	Total		0	0	26,500	224,330	0	12,000	
Environment	Taff		0	0	10,000	55,450	0	1,450	
Agency	Tawe		0	0	0	19,817	0	0	
Wales	Ebbw		0	0	0	0	0	0	
	Teifi		0	0	0	0	0	0	
	Afan		0	0	0	0	0	0	
	Taf		0	0	0	0	0	0	
	Wye	Main river	0	0	131,400	16,000	0	8,500	
	Tywi	Main river + Cothi and Gwili	0	0	0	0	0	0	
	Eastern Cleddau		0	0	0	6	0	0	
	Rheidol		0	0	0	0	0	0	
	Conwy	Main river, Lledr + Llugwy	0	0	0	0	0	0	
	Mawddach	Main river, Eden and Wnion	0	0	0	15,200	0	0	
	Dee	Main river (plus var. tribs.)	0	0	29,400	28,000	0	0	
		Total		0	0	170,800	134,473	0	8,500
	North West	Ribble	Hodder	0	0	0	22,000	0	0
Leven			0	0	0	0	0	0	
Lune		Main River (plus var. tribs.)	0	0	0	0	0	0	
	Total		0	0	0	22,000	0	0	
England and Wales			0	20,100	402,620	400,803	78,800	27,955	
Notes:			1+ Parr are those stocked out on or after 1st January in the year after they hatched.						
			1+ Smolts are those stocked out on or after 1st January in the 1st year after they hatched.						
			2+ Smolts are those stocked out on or after 1st January in the 2nd year after they hatched.						

**Section 6
Table 22**

Sea Trout Stocking – number of eggs, fry, parr and smolts released - 2011

Environment			Unfed	Fed	0+	1+	1+	2+	
Agency Region	River	Tributary	Ova	Fry	Fry	Parr	Parr	Smolts	Smolts
South West	Axe	Main River + Kit Brook	0	0	0	0	0	0	0
	Total		0	0	0	0	0	0	0
Environment	Taff		0	0	0	0	0	0	0
	Ogmore		0	0	0	0	0	0	0
Agency	Ebbw		0	0	0	0	0	0	0
Wales	Tywi	Main river + Cothi and Gwili	0	0	0	0	0	0	0
	Mawddach	Main river, Eden and Wnion	0	0	0	0	0	0	0
	Total		0	0	0	0	0	0	0
North West	Ribble	Hodder	0	0	0	0	0	0	0
	Lune	Main River (plus var. tribs.)	0	0	0	300	0	0	0
	Total		0	0	0	300	0	0	0
England and Wales			0	0	0	300	0	0	0
Notes:	<p>1+ Parr are those stocked out on or after 1st January in the year after they hatched.</p> <p>1+ Smolts are those stocked out on or after 1st January in the 1st year after they hatched.</p> <p>2+ Smolts are those stocked out on or after 1st January in the 2nd year after they hatched.</p>								

7. REFERENCES

ANON, 2012. *Annual Assessment of Salmon Stocks and Fisheries in England and Wales, 2011* (preliminary assessment for ICES, April 2010) Cefas/EA:97 pp. ISBN: 978 0 907545 71 2.

RUSSELL, I.C., IVES, M.J., POTTER, E.C.E., BUCKLEY, A.A. and DUCKETT, L., 1995. *Salmon and migratory trout statistics for England and Wales, 1951-1990*. Fisheries Research Data Report (38):252 pp.

ENVIRONMENT AGENCY, 2011. *Salmonid and Freshwater Fisheries Statistics for England and Wales 2010*.

8. GLOSSARY

Cefas	The Centre for Environment, Fisheries & Aquaculture Science
EIFAC	European Inland Fisheries Advisory Commission
Grilse	Salmon that has spent not more than one winter at sea before maturing, also known as 1 sea winter (1SW) fish
ICES	International Council for the Exploration of the Seas
Migratory trout	Sea trout, referred to as sewin in Wales. Migratory form of trout <u><i>Salmo trutta</i></u> (L.)
MSW	Multi-Sea-Winter; a salmon that has spent two or more winters at sea before maturing
NASCO	North Atlantic Salmon Conservation Organisation
Nets	Instruments other than rod and line (including nets and fixed engines such as cribbs, putts, putchers, baulks, fishing weirs and traps as used for the capture of migratory salmonids)
NLO	Net Limitation Order

**Would you like to find out more about us,
or about your environment?**

Then call us on

03708 506 506 (Mon-Fri 8-6)

Calls to 03 numbers cost the same as calls to standard geographic numbers
(i.e. numbers beginning with 01 or 02).

email

enquiries@environment-agency.gov.uk

or visit our website

www.environment-agency.gov.uk

incident hotline 0800 80 70 60 (24hrs)

floodline 0845 988 1188



Environment first: Are you viewing this on screen? Please consider the environment and only print if absolutely necessary. If you are reading a paper copy, please don't forget to reuse and recycle if possible.