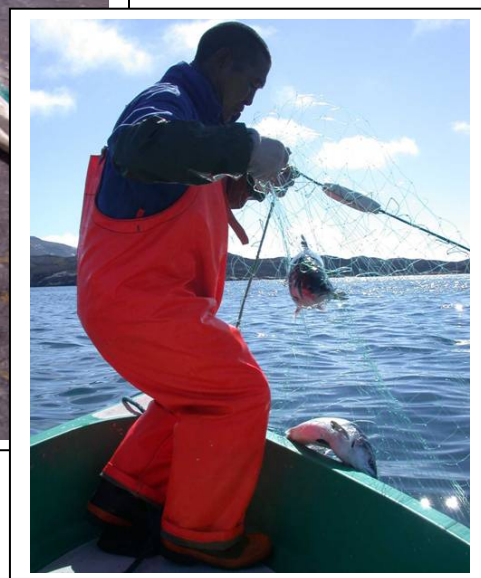


# Salmonid & Freshwater Fisheries Statistics for England & Wales, 2010

Including declared catches of salmon, sea trout and eels by rods, nets and other instruments



This report, prepared by the Environment Agency, is one of a long-term series. It contributes to our objectives of communicating our fisheries monitoring programme. Previous reports are available at [www.environment-agency.gov.uk/fishstats](http://www.environment-agency.gov.uk/fishstats)

We are the Environment Agency. It's our job to look after your environment and make it **a better place** – for you, and for future generations.

Your environment is the air you breathe, the water you drink and the ground you walk on. Working with business, Government and society as a whole, we are making your environment cleaner and healthier.

The Environment Agency. Out there, making your environment a better place.

Published by:

Horizon House. Deanery Road,  
Bristol, BS1 5AH Tel: 03708 506506 Email:  
[enquiries@environment-agency.gov.uk](mailto:enquiries@environment-agency.gov.uk)  
Website: [www.environment-agency.gov.uk](http://www.environment-agency.gov.uk)

© Environment Agency

All rights reserved. This document may be reproduced  
with prior permission of the Environment Agency.  
March 2012.

## Acknowledgements

The Environment Agency would like to take this opportunity to thank all the fishermen who sent us their catch returns last year. Your returns help protect our fish stocks and without them this report would not be possible.

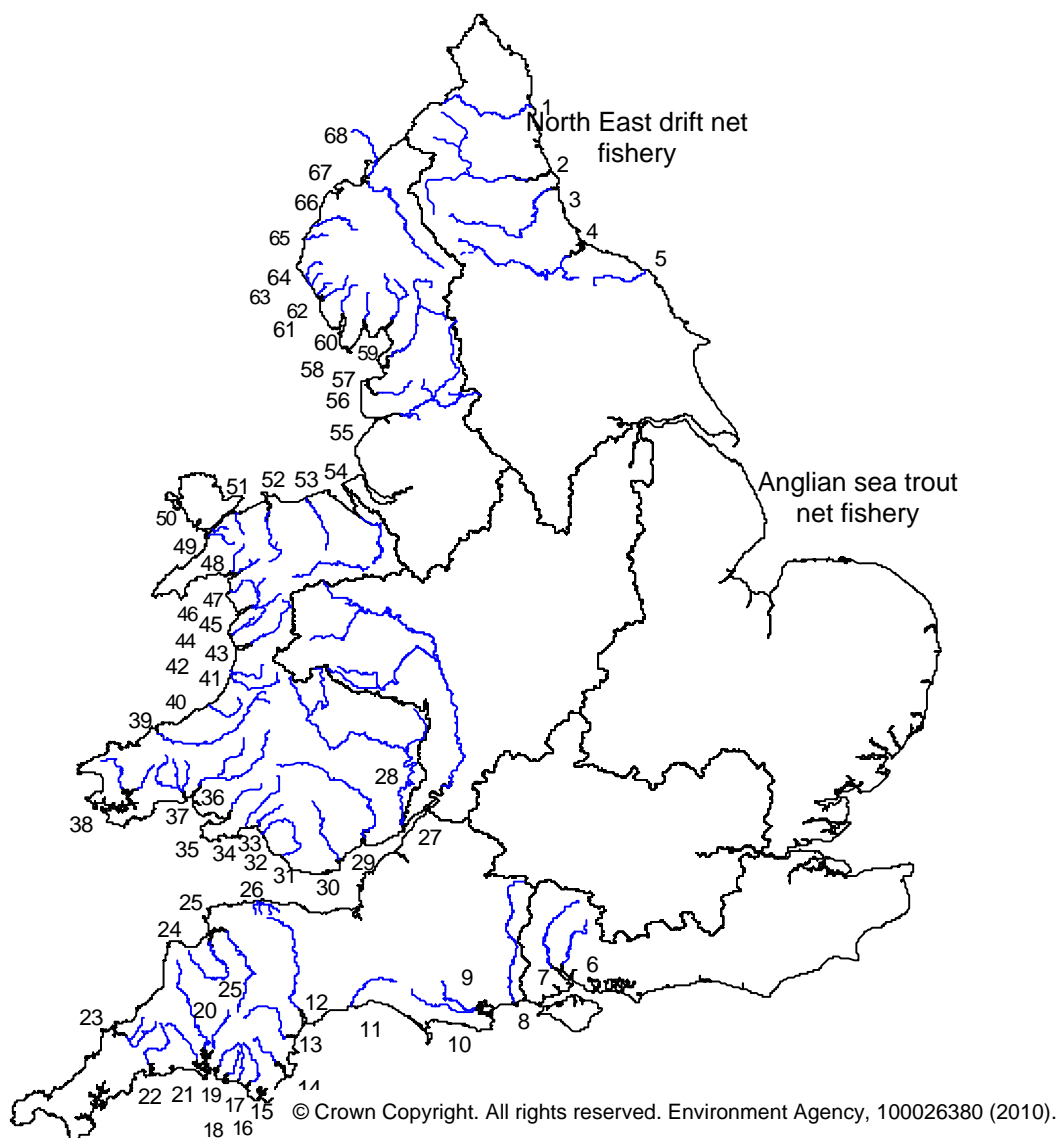
### Now available...

You can now submit your catch return electronically. Please visit

[www.environment-agency.gov.uk/catchreturn](http://www.environment-agency.gov.uk/catchreturn)

to find out how

# Major salmon and sea trout rivers and fisheries in England and Wales



**Key:**

**North East**

- 1 Coquet
- 2 Tyne
- 3 Wear
- 4 Tees
- 5 Esk (Yorks)

**Southern**

- 6 Itchen
- 7 Test

**South West**

- 8 Avon (Hants)
- 9 Piddle
- 10 Frome
- 11 Axe
- 12 Exe
- 13 Teign
- 14 Dart
- 15 Avon (Devon)
- 16 Erme
- 17 Yealm
- 18 Plym
- 19 Tavy
- 20 Tamar
- 21 Lynher

**Midlands**

- 22 Fowey
- 23 Camel
- 24 Torridge
- 25 Taw
- 26 Lyn
- 27 Severn

**Wales**

- 28 Wye
- 29 Usk
- 30 Taff
- 31 Ogmore
- 32 Afan
- 33 Neath
- 34 Tawe
- 35 Loughor
- 36 Tywi
- 37 Taf
- 38 Cleddau
- 39 Teifi
- 40 Aeron
- 41 Ystwyth
- 42 Rheidol
- 43 Dyfi
- 44 Dysynni
- 45 Mawddach

**North West**

- 46 Artro
- 47 Dwyrhyd
- 48 Glaslyn
- 49 Gwyrfai
- 50 Seiont
- 51 Ogwen
- 52 Conwy
- 53 Clwyd
- 54 Dee
- 55 Ribble
- 56 Wyre
- 57 Lune
- 58 Kent
- 59 Leven
- 60 Crake
- 61 Duddon
- 62 Esk (Cumbrian)
- 63 Irt
- 64 Ehen
- 65 Derwent
- 66 Ellen
- 67 Eden
- 68 Esk (Border)

# Contents

1.	Introduction	6
2.	The Environment Agency and its Regions	6
3.	Rod and net licence catch returns	6
4.	National overview and summary of main findings	7
	Table 1	Summary of declared salmon and sea trout catches England & Wales (2010, 2000 and 5-year mean)
	Table 2	Summary of total salmon and sea trout net and fixed engine catches and weights (2010)
	Table 3	Summary of total salmon and sea trout catches and weights (2010)
	Figure 1	Number of net licences issued (1985-2010) and number of days declared fished by salmon and sea trout rod licence holders (1994-2010), England & Wales
	Figure 2	Total salmon net catches for England & Wales (1956-2010)
	Figure 3	Total salmon rod catches for England & Wales (1956-2010)
	Figure 4	Total sea trout net catches for England & Wales (1978-2010)
	Figure 5	Total sea trout rod catches for England & Wales (1978-2010)
5.	Regional Catch Summaries	12
	Table 4	Summary of salmon net catches by Region (2010, 2009 and 5-year mean)
	Table 5	Summary of sea trout net catches by Region (2010, 2009 and 5-year mean)
	Table 6	Summary of salmon rod catches by Region (2010, 2009 and 5-year mean)
	Table 7	Summary of sea trout rod catches by Region (2010, 2009 and 5-year mean)
	Figure 6	Salmon and sea trout net catches by Region (2010)
	Figure 7	Salmon and sea trout rod catches by Region (2010)
6.	Description of data tables 1 to 21	14
	Data tables ( 1 to 21)	15
7.	References	41
8.	Glossary	41

## Section 1

# Introduction

This report is the Environment Agency's sixteenth collation of salmon and sea trout catch statistics for England and Wales and the Border Esk in Scotland. From 1989 to 1994, these statistics were published by the National Rivers Authority (NRA). The Ministry of Agriculture, Fisheries and Food, Directorate of Fisheries Research also included them in its Data Report series between 1983 and 1988.

This report is a reference document of declared salmonid catches in England, Wales and Border Esk.

Salmon stock assessment data (including provisional catches and run estimates) are published in an annual assessment for the International Council for the Exploration of the Seas (ICES). The thirteenth

report in this series was published jointly by the Environment Agency and the Centre for Environment, Fisheries & Aquaculture Science (Cefas) in April 2010 ([www.environment-agency.gov.uk/fishstats](http://www.environment-agency.gov.uk/fishstats)).

The catch data recorded here represent declared catches only. This document is therefore not an complete record of the total numbers of fish landed. Furthermore, the relationship between catch and stock size is not always straight forward, regardless of the accuracy of the catch data. Great care must be taken therefore in interpreting these data.

## Section 2

# The Environment Agency and its regions

The Environment Agency is a non-departmental public body established by the Environment Act 1995. It has taken over the functions of its predecessors, the National Rivers Authority, Her Majesty's Inspectorate of Pollution, Waste Regulation Authorities and some parts of the Department of the Environment. The Environment Agency came into effect on 1 April 1996.

There are eight Environment Agency Regions: North East & Yorkshire, Anglian, Thames, Southern, South

West, Midlands, Environment Agency Wales and North West. The Border Esk in Scotland is regulated by North West region and for the purposes of this report will be included as part of the North West statistics. Throughout this report references to salmon and sea trout fisheries in England and Wales includes the parts of the Border Esk in Scotland.

## Section 3

# Rod and net licence catch returns

Salmon and sea trout rod licence holders are legally required to submit a full and accurate catch return to the Agency by 1 January in the following year. Commercial net and fixed engine licence holders must submit their returns within 14 days of the end of their respective fishing seasons.

In January 2011, the Environment Agency sent a reminder to all holders of a salmon and sea trout rod licence to declare their catch returns. This was 2 months later than in 2009 due to restrictions on large mailings imposed on all government bodies. The deadline to submit catch returns was extended to 31 January 2011.

In an attempt to further improve reporting rates, the Environment Agency now also offer submission by email using an electronic version of the catch return form available on our website. This was in response to removing the second reminder that was a considerable cost. An email reminder was sent to 2500 email addresses in March 2011 as a substitute 2<sup>nd</sup> reminder which yielded a further 600 returns. This brought total returns to 22972.

We believe that the returns published here record over 80 percent of all migratory salmonids caught in England and Wales.

## National overview and summary of main findings

**Table 1** Summary of declared salmon and sea trout rod and net catches for England and Wales in 2010 showing % change on 2009 and the 5- year mean (2005- 2009).

	2010	2009	5-yr. mean (2005-2009)	% change (+/-)	
				2010 on 2009	2010 on 5- yr mean 5-yr. mean
<b>RODS</b>					
*Licences issued	36,161	36,461	33,652	-1%	7%
*Days declared fished	195,086	183,287	170,836	6%	14%
Salmon caught	24,826	15,563	19,997	60%	24%
% Salmon released (number released)	59% 14,691	58% 9,096	56% 11,197	1%	3%
Sea trout caught	37,543	27,707	29,880	36%	26%
% Sea trout released (number released)	69% 26010	62% 18,739	59% 17,968	7%	10%
<b>NETS</b>					
Licences issued	319	317	351	1%	-10%
Salmon caught	22,615	7,505	11,533	201%	96%
Sea trout caught	60,218	30,755	25,564	96%	136%

\* Salmon and sea trout licences only

**RODS SUMMARY**

- The number of salmon and sea trout rod licences issued in 2010 (36,161) decreased by 1% compared with 2009, and increased by 7% compared with the mean of the previous five years (2005-2009).
- The total declared salmon rod catch in 2010 (24,826) increased by 60% compared with 2009, with a 24% increase when compared with the 5- year mean (19,997).
- The declared rod catch of sea trout in 2010 (37,543) increased by 36% compared with 2009 (27,707) and has increased by 26% compared with the 5-year mean (29,880).
- Catch-and-release rates for rod caught salmon (59%) and sea trout (69%) in 2010 showed an increase on those recorded in 2009. Implementation of byelaws, incentive schemes and angler awareness has contributed to a marked increase in release over the past few years. In 1993 just 8% of rod caught salmon were released following capture.
- 39% of Salmon and 54% of sea trout were caught by anglers using a fly in 2010, followed by spinning 40% of salmon, 29% of sea trout and bait with 18% of salmon and 15% of sea trout. As in previous years 2% of catches had no method information. These percentage figures are all

principally the same as 2009 but with a 4% increase for sea trout caught using a fly, and all other changes being minor of 2% or less.

- The river with the highest declared rod catch of salmon in 2010 was the Tyne (5,115) followed by the Wear (1,531) the Eden (1,431), the Derwent (1,248) and the Border Esk (1,230). 20% of the total England and Wales rod catch of salmon was recorded on the Tyne in 2010, this is consistent with 2009.
- The river with the highest declared rod catch of sea trout in 2010 was the Tywi (2,770) followed by the Tyne (2,687), Teifi (2,186) and the Dyfi (2,093). The number of sea trout caught overall in 2010 was almost 10,000 more than in 2009.
- Please note that for salmon on the Wye, Test and Itchen rivers data from catch returns has been used in preference to owners data, as has been used in the past. For comparative purposes the owners data is detailed in the footnotes

## **NETS SUMMARY**

- A total of 319 salmon and sea trout commercial net licences were issued in 2010. This compares with 317 in 2009 and a 5-year mean of 351. Since 1985 there has been a 69% reduction in the number of net licences issued annually in England and Wales (from 1,026 to 319).
- The salmon net catch in 2010 (22,615) increased by 201% compared with the previous year and by 96% when compared with the 5-year mean (11,533). Whilst most fisheries showed increases that averaged 97%, the North East fishery showed the greatest increase at 270%.
- The average weight of net caught salmon in 2009 was 3.2 kg. This compares with an average weight of 3.3 kg for rod caught salmon.
- Net fisheries exempted from the 'spring' byelaws (that is those targeting sea trout) released all salmon before 1 June. All salmon caught in the South West were released (506 in total).
- A total of 60,218 sea trout were declared caught by the net fisheries in 2010, an increase of 96% compared with the 2009 catch and an increase of 136% compared with the 5-year mean.
- The average weight of net and rod caught sea trout in 2009 was 1.4 kg and 0.9kg respectively. Byelaws regulating mesh size has resulted in a decrease in the capture of small sea trout by most net fisheries.



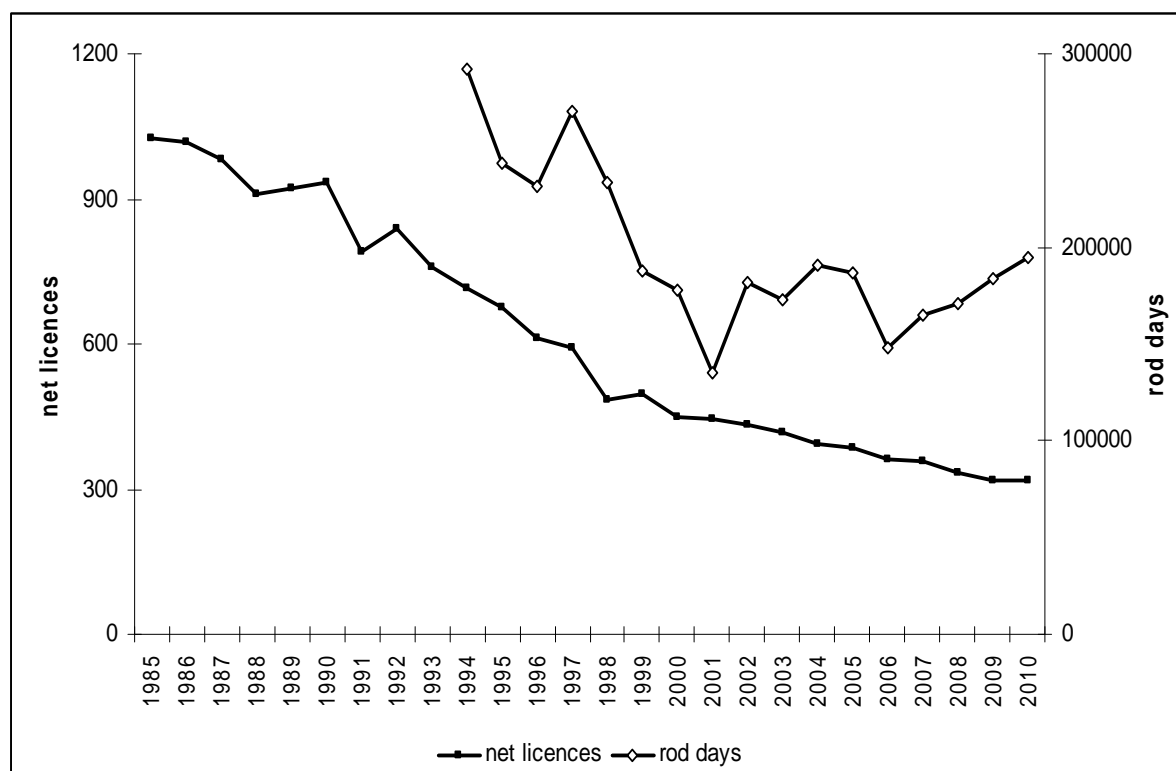
## Section 4

**Table 2 Summary of total salmon and sea trout net and fixed engine catches and weights, 2010**

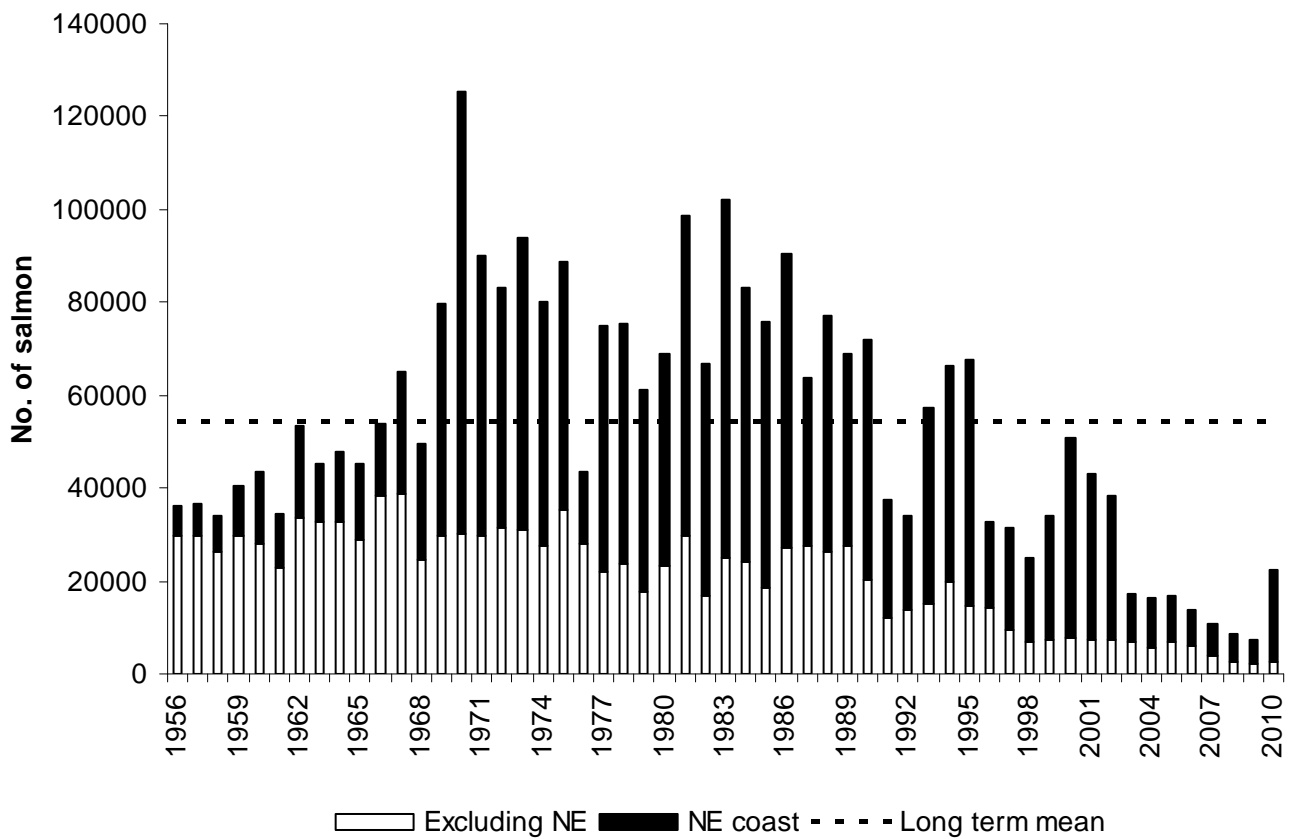
	Salmon		Sea trout	
	Number	Weight (t.)	Number	Weight (t.)
Caught	22,615	73	60,260	87
Retained	22,108	73	60,218	87
Released	507	0.17	42	0.06

**Table 3 Summary of total salmon and sea trout rod catches and weights, 2010**

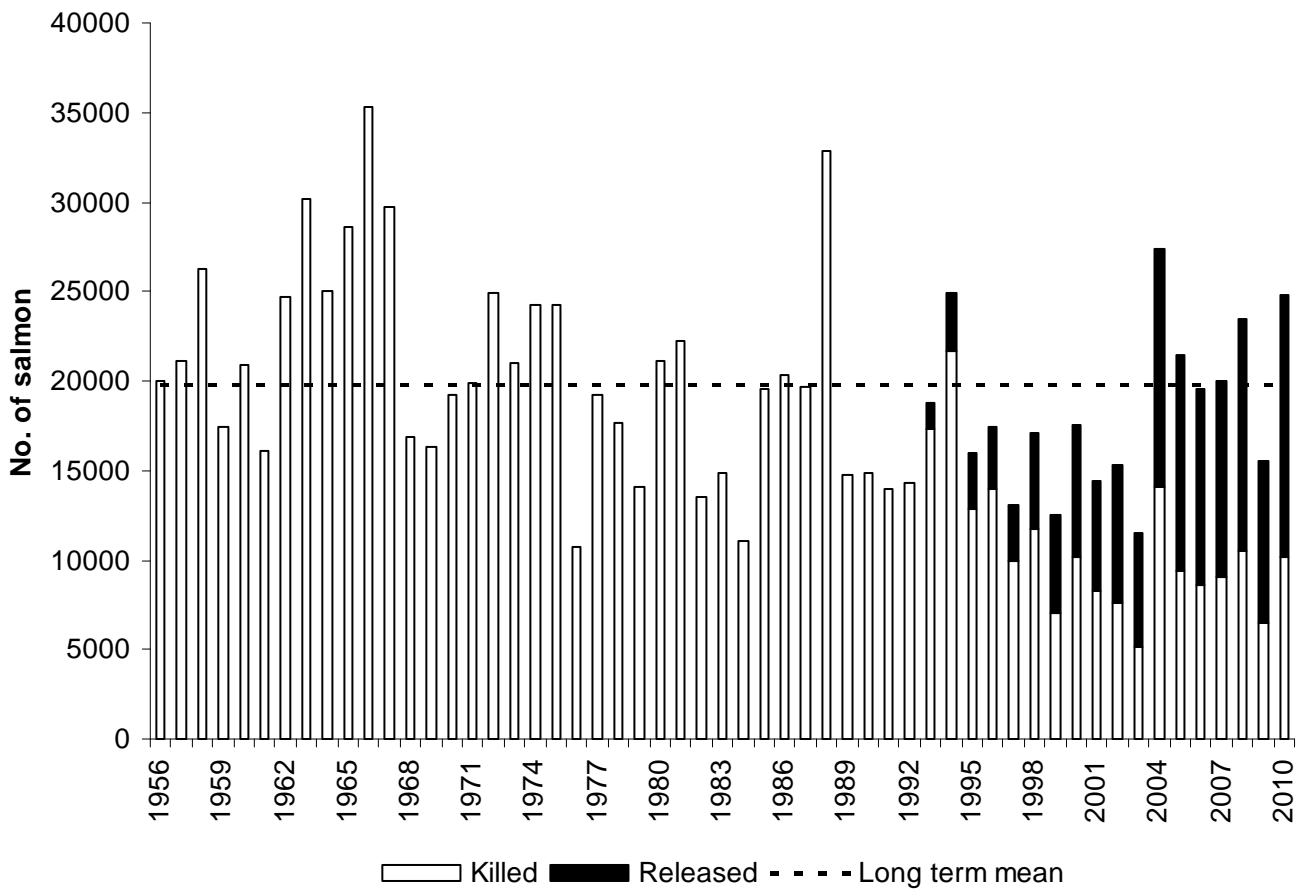
	Salmon		Sea trout	
	Number	Weight (t.)	Number	Weight (t.)
Caught	24826	88.2	37543	34.1
Retained	10135	34.6	11533	13.6
Released	14691	53.6	26010	20.5



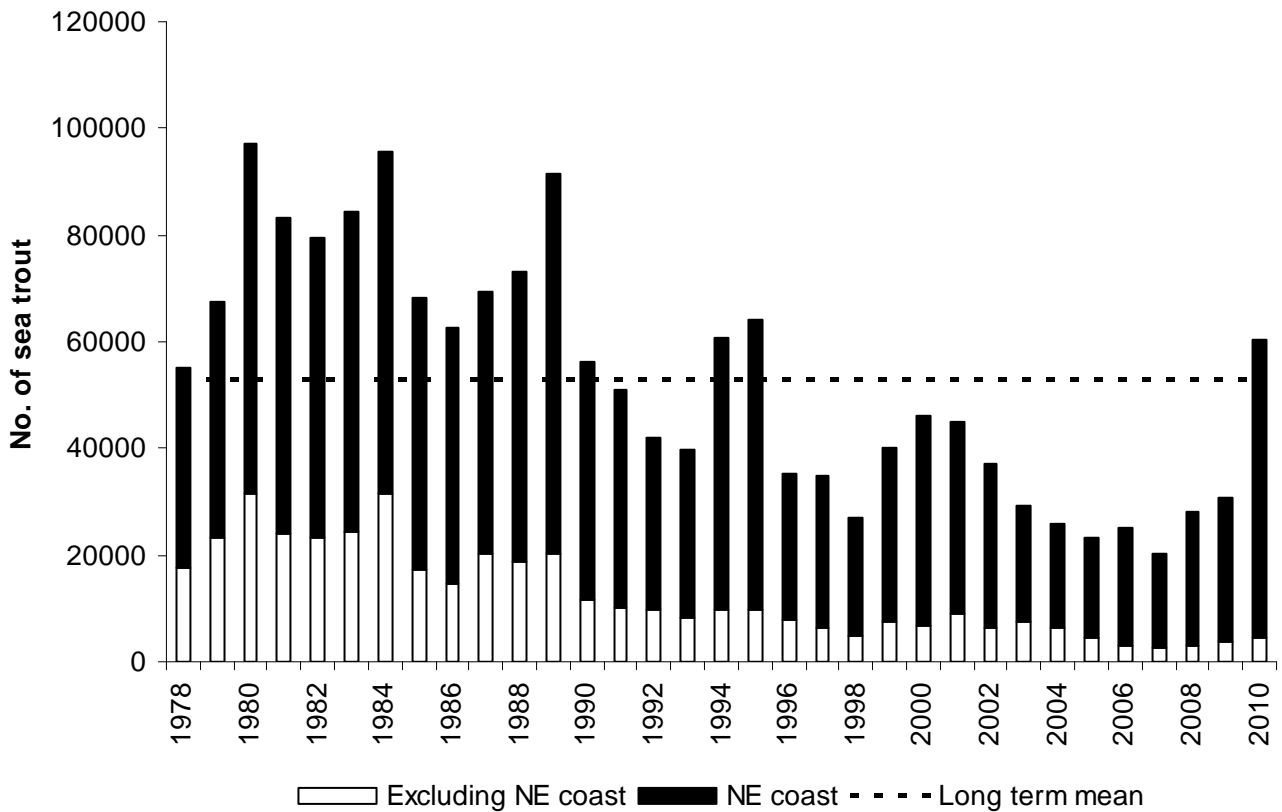
**Figure 1 Number of net and fixed engine licences issued (1985-2010) and total number of days fished by salmon and sea trout rod licence holders (1994-2010), England & Wales.**



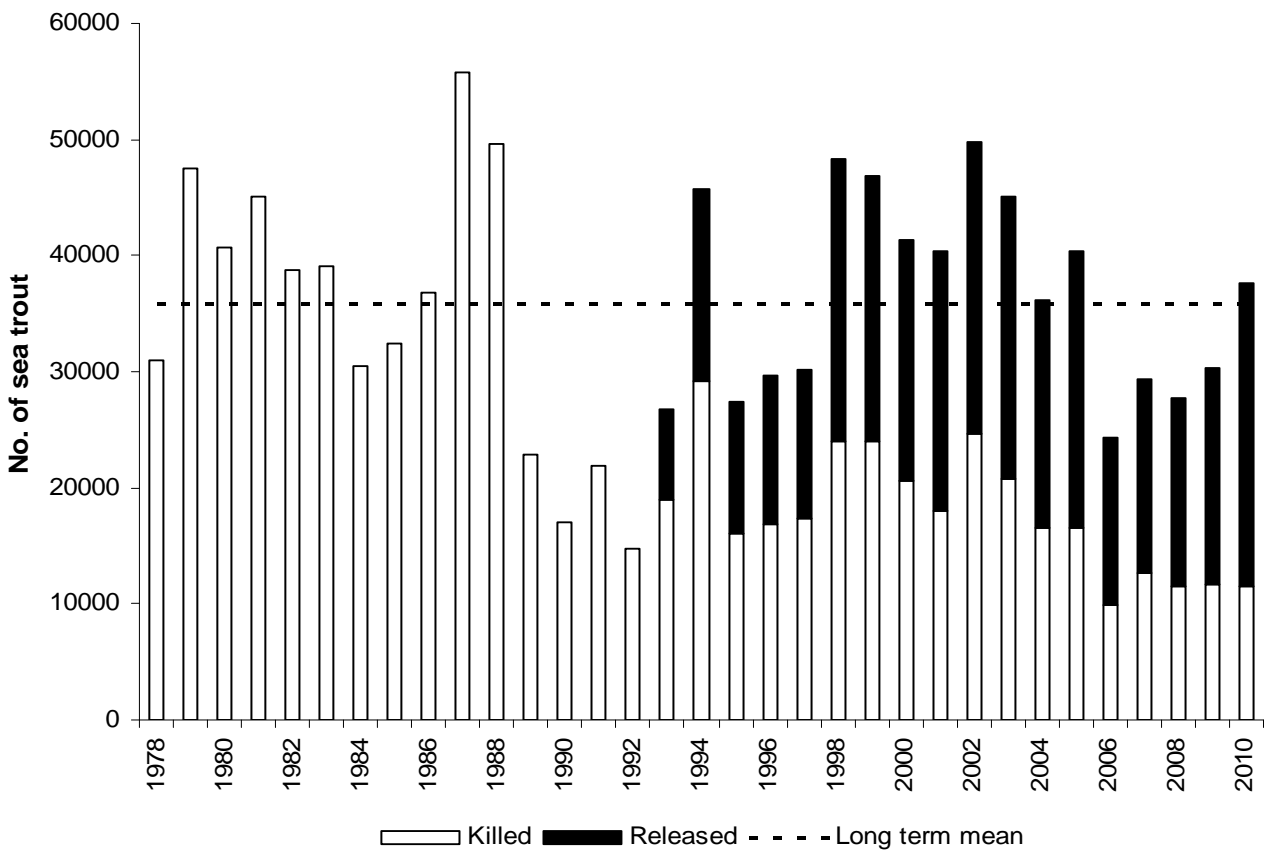
**Figure 2** Total declared salmon net and fixed engine catch for England & Wales, 1956-2010 (shaded area indicates the catch for the North East Coast fishery).



**Figure 3** Total declared salmon rod catch for England & Wales, 1956-2010 (shaded area indicates fish caught and released).



**Figure 4** Total declared sea trout net and fixed engine catch for England & Wales, 1978- 2010 (shaded area indicates the catch for the North East coast fishery).



**Figure 5** Total declared sea trout rod catch for England & Wales, 1978-2010 (shaded area indicates fish caught and released).

## Section 5

# Regional catch summaries (2010, 2009 and 5- year mean)

**Table 4 Summary of salmon net and fixed engine catches by Region**

	2010	2009	5-year mean (2005-2009)	% change (+/-) 2010 on 2009	% change (+/-) 2010 on 5-yr mean
North East	19,982	5,395	6786	270%	194%
Anglian	1	3	8	-67%	-88%
Thames	-	-	-	-	-
Southern	-	-	-	-	-
South West	506	285	375	78%	35%
Midlands	238	883	823	-73%	-71%
EA Wales	223	93	386	140%	-42%
North West	1665	846	2032	97%	-18%

**Table 5 Summary of sea trout net and fixed engine catches by Region**

	2010	2009	5-year mean (2005-2009)	% change (+/-) 2010 on 2009	% change (+/-) 2010 on 5-yr mean
North East	55,546	26,957	23,129	106%	140%
Anglian	471	688	751	-32%	-37%
Thames	-	-	-	-	-
Southern	1	0	2	-	-50%
South West	692	688	655	1%	6%
Midlands	1	7	7	-	-
EA Wales	2074	1480	1146	40%	81%
North West	1433	935	681	53%	110%

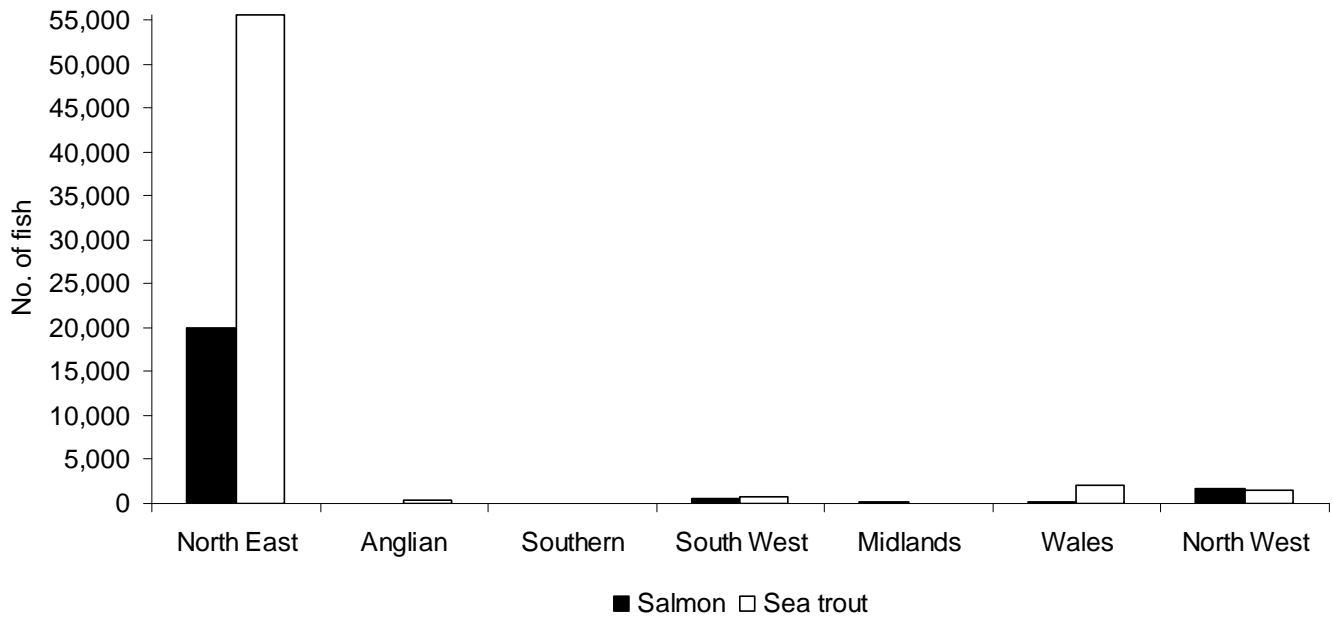
**Table 6 Summary of salmon rod catches by Region**

	2010	2009	5-year mean (2005-2009)	% change (+/-) 2010 on 2009	% change (+/-) 2010 on 5-yr mean
North East	7,947	4,421	5326	80%	49%
Anglian	1	-	0		
Thames	2	0	0		
Southern	366	391	467	-6%	-22%
South West	2,628	1,648	1,986	59%	32%
Midlands	235	213	315	10%	-25%
EA Wales	5,573	3,356	4,675	66%	19%
North West	8,074	5,532	7,193	46%	12%

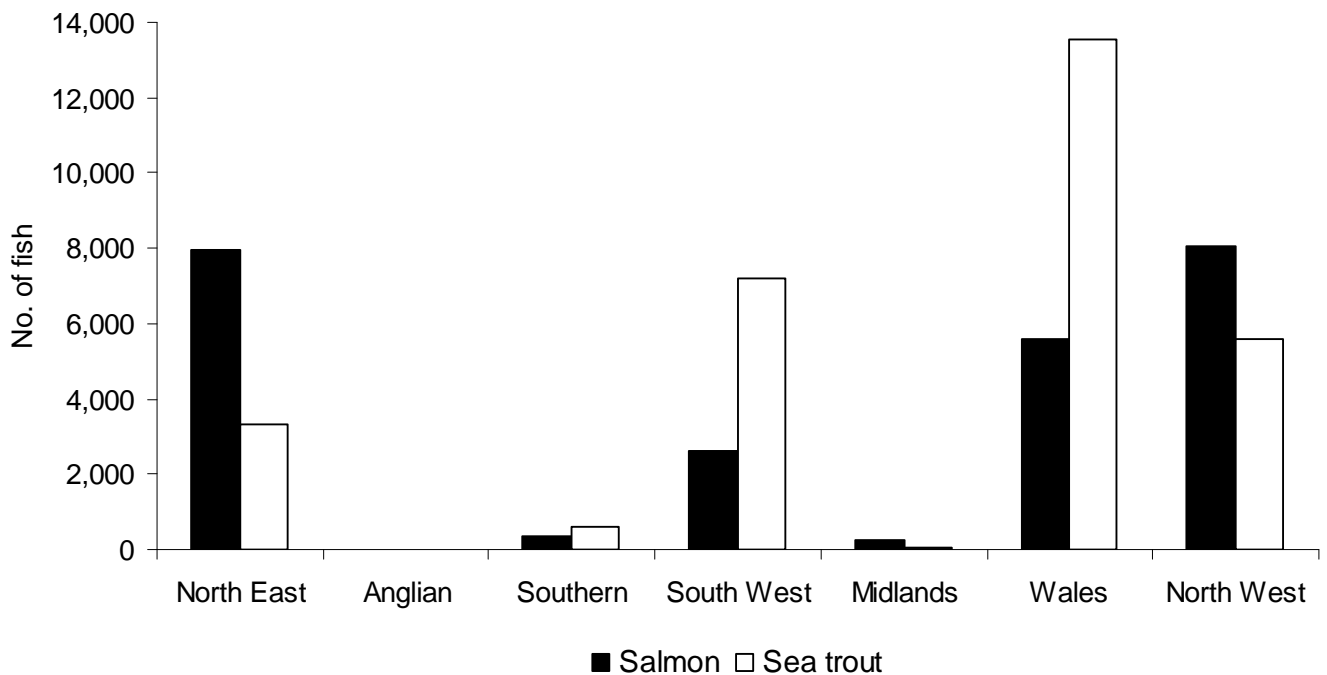
**Table 7 Summary of sea trout rod catches by Region**

	2010	2009	5-year mean (2005-2009)	% change (+/-) 2010 on 2009	% change (+/-) 2010 on 5-yr mean
North East	6,021	3,318	4,200	81%	43%
Anglian	4	3	3		
Thames	2	0	3		
Southern	1012	622	520	63%	95%
South West	7,578	7,194	5,537	5%	37%
Midlands	23	57	46	-60%	-50%
EA Wales	16,674	13,556	14,836	23%	12%
North West	6,229	5,608	5,177	11%	20%

## Section 5



**Figure 6** Declared salmon and sea trout net fixed engine catches by Region, 2010.



**Figure 7** Declared salmon and sea trout rod catches by Region, 2010.

## Section 6

# Tables

Table 1	Net Fishing licences- number & value 2010
Table 2	Eel and elver licence sales and catches, 2010 season
Table 3	National Rod Fishing Licences – Number and Value valid from 1 April 2010- 31 March 2011
Table 4	Net Season & Weekly Closure Times- Salmon & Sea Trout – 2010 Season
Table 5	Rod Fishing Season for Salmon & sea Trout – including method restrictions & bag limits 2010
Table 6	Main Updates for Rod & Net fisheries in 2010
Table 7	Salmon Net Catches – 2010 Season
Table 8	Sea Trout Net Catches – 2010 Season
Table 9	Salmon Rod Catches (released totals in brackets) – 2010 Season
Table 10	Sea Trout Rod Catches (released totals in brackets) – 2010 Season
Table 11	Rod Caught Salmon & Sea Trout, Average Weight (kg) - 2010 season
Table 12	Number of rod caught salmon in weight categories (lb & kg) - 2010
Table 13	Number of rod caught sea trout in weight categories (lb & kg) - 2010
Table 14	Summary of salmon net catches, 2000 - 2010
Table 15	Summary of sea trout net catches, 2000 - 2010
Table 16	Summary of salmon rod catch, 2000 - 2010
Table 17	Summary of sea trout rod catch, 2000 - 2010
Table 18	Reported Net Effort data for Salmon & Sea Trout- 2010
Table 19	Reported Rod Effort Data for Salmon & Sea Trout – 2010
Table 20	Estimated Proportions of Grilse & Multi- Sea Winter (MSW) Salmon in Declared Rod Catch- 2010
Table 21	Salmon Stocking – number of eggs, fry, parr and smolts released – 2010
Table 22	Sea Trout Stocking – number of eggs, fry, parr and smolts released – 2010

## Section 6

Table 1 Net Fishing Licences- number &amp; value 2010

Environment Agency Region	Fishing Method	Number (a)	Duty (£)	Number of endorsees	Value (£)
North East Northumbria Area	Coastal (N) drift and T nets	3	1313.00		3939.00
	Coastal (N) drift nets	9	1206.00	30	10854.00
	Coastal (N) T nets	23	842.00	56	19366.00
	Coastal (S) T nets	1	842.00	1	842.00
	<b>Total</b>	<b>36</b>		<b>87</b>	<b>35,001.00</b>
North East Yorkshire Area	Coastal drift nets	2	1206.00	3	2412.00
	Coastal T or J nets	36	842.00	65	30312.00
	<b>Total</b>	<b>38</b>		<b>68</b>	<b>32,724.00</b>
Anglian	Drift nets	23	79.00	51	1817.00
	Other nets (various)	7	79.00	15	553.00
	<b>Total</b>	<b>30</b>		<b>66</b>	<b>2,370.00</b>
Southern	Seine nets	1	79.00	1	79.00
	<b>Total</b>	<b>1</b>		<b>0</b>	<b>79.00</b>
South West	Seine nets	3	381.00	12	1143.00
	<b>Total</b>	<b>3</b>		<b>12</b>	<b>1,143.00</b>
South West Devon & Cornwall	Seine nets (single river)	27	343.00	67	9261.00
	Drift nets (Camel)	6	314.00	10	1884.00
	<b>Total</b>	<b>33</b>		<b>77</b>	<b>11,145.00</b>
Midlands	Lave nets (half season)	25	58.00	0	1450.00
	Seine nets	1	277.00	3	277.00
	Fixed Engine ranks:				
	500 Putchers (10 units of 50)	2	79.00	0	790.00
	<b>Total</b>	<b>28</b>		<b>3</b>	<b>2,517.00</b>
Environment Agency Wales	Compass nets	6	96.00	8	576.00
	Coracle nets (Teifi, Taf)	12	248.00	22	2976.00
	Coracle nets (Towy)	7	555.00	23	3885.00
	Wade nets	1	79.00	2	79.00
	Seine nets (Dyfi, Towy, Teifi)	8	582.00	69	4656.00
	Seine nets (Dysynni, Conwy)	4	372.00	69	1488.00
	Seine nets (NeVERN, Mawddach)	2	261.00	69	522.00
	Lave nets	6	79.00	0	474.00
	<b>Total</b>	<b>46</b>		<b>262</b>	<b>14,656.00</b>
North West	Haaf nets (Solway)	66	143.00	14	9438.00
	Drift nets (Ribble)	5	424.00	6	2120.00
	Haaf nets (Lune)	12	285.00	5	3420.00
	Drift nets (Lune)	7	582.00	8	4074.00
	Lave nets (Kent)	7	143.00	1	1001.00
	Lave nets (Leven)	2	143.00	1	286.00
	Coop nets (Eden)	3	367.00	0	1101.00
	<b>Total</b>	<b>102</b>		<b>35</b>	<b>21,440.00</b>
<b>England &amp; Wales</b>	<b>Total</b>	<b>317</b>		<b>610</b>	<b>121,075.00</b>
Key: (a) Numbers represent the number of licensees, except for data in brackets which represent numbers of licensed components on which duty is paid.					

## Section 6

Table 2 Eel and elver licence sales and catches, 2010 season

Environment Agency Region	LICENCES				CATCHES (Kg)				
	Method	Number of licences (a)	No. instruments	Duty (£)	Value (£)	Method	Elver	Yellow Eel	Silver Eel
North East	Small wingless traps (10)	2	70	13.00	156.00	Small wingless traps (10)	n/a	47	25
	Fyke nets	6	29	6.00	174.00	Fyke nets	n/a	87	1
	<b>Total</b>	<b>8</b>	<b>99</b>		<b>330.00</b>	<b>Total</b>	<b>0</b>	<b>134</b>	<b>26</b>
Anglian	Small wingless traps (10)	10	170	13.00	267.60	Small wingless traps (10)	n/a	979	288
	Fyke nets	33	627	6.00	3762.00	Fyke nets	n/a	9843	452
	<b>Total</b>	<b>43</b>	<b>797</b>		<b>4,029.60</b>	<b>Total</b>	<b>0</b>	<b>10822</b>	<b>740</b>
Thames	Small wingless traps (10)	5	360	13.00	27.60	Small wingless traps (10)	n/a	13	5
	Fyke nets	10	270	6.00	1620.00	Fyke nets	n/a	5633	43
	<b>Total</b>	<b>15</b>	<b>630</b>		<b>1,647.60</b>	<b>Total</b>	<b>0</b>	<b>5438</b>	<b>48</b>
Southern	Small wingless traps (10)	6	150	13.00	38.40	Small wingless traps (10)	n/a	237	23
	Fyke nets	21	702	6.00	4212.00	Fyke nets	n/a	1207	286
	Fixed trap	5	6	120.00	678.00	Fixed trap	0	0	543
	<b>Total</b>	<b>32</b>	<b>858</b>		<b>4,928.40</b>	<b>Total</b>	<b>0</b>	<b>1444</b>	<b>829</b>
South West	Small wingless traps (10)	1	10	13.00	12.00	Small wingless traps (10)	n/a	8	0
	Fyke nets	21	325	6.00	1950.00	Fyke nets	n/a	2716	293
	Fixed trap	2	2	120.00	226.00	Fixed trap	n/a	0	372
	Elver dip net	103	103	78.00	7519.00	Elver dip net	761	n/a	n/a
	<b>Total</b>	<b>127</b>	<b>440</b>		<b>9,707.00</b>	<b>Total</b>	<b>761</b>	<b>2724</b>	<b>665</b>
Midlands	Small wingless traps (10)	5	60	13.00	72.00	Small wingless traps (10)	n/a	779	43
	Fyke nets	13	143	6.00	858.00	Fyke nets	n/a	2330	130
	Elver dip net	209	209	78.00	15257.00	Elver dip net	438	n/a	n/a
	<b>Total</b>	<b>227</b>	<b>412</b>		<b>16,187.00</b>	<b>Total</b>	<b>438</b>	<b>3109</b>	<b>173</b>
Environment Agency Wales	Small wingless traps (10)	5	36	13.00	43.20	Small wingless traps (10)	n/a	5	9
	Fyke nets	9	48	6.00	288.00	Fyke nets	n/a	394	15
	Elver dip net	45	45	78.00	3285.00	Elver dip net	95	n/a	n/a
	<b>Total</b>	<b>59</b>	<b>129</b>		<b>3,616.20</b>	<b>Total</b>	<b>95</b>	<b>399</b>	<b>24</b>
North West	Small wingless traps (10)	2	14	13.00	16.80	Small wingless traps (10)	n/a	0	0
	Fyke nets	11	54	6.00	324.00	Fyke nets	n/a	150	72
	Fixed trap	0	0	120.00	0.00	Fixed trap	n/a		
	Elver dip net	12	12	78.00	876.00	Elver dip net	30	n/a	n/a
	<b>Total</b>	<b>25</b>	<b>80</b>		<b>1,216.80</b>	<b>Total</b>	<b>30</b>	<b>150</b>	<b>72</b>
<b>England &amp; Wales</b>	<b>Total</b>	<b>536</b>	<b>3,445</b>		<b>41,662.60</b>	<b>Total</b>	<b>1,324</b>	<b>24,220</b>	<b>2,577</b>



Section 6

**Table 3 National Rod Fishing Licences – Number and Value valid from 1 April 2010- 31 March 2011**

Environment Agency Region	Non-migratory trout and coarse fish						Salmon and sea trout						All licences	
	Full Duty £27.00	Concession Duty £18.00	Junior Duty £5.00	8 Day Duty £10.00	1 Day Duty £3.75	Total	Full Duty £72.00 (a)	Concession Duty £48.00 (a)	Junior Duty £5.00	8 Day Duty £23.00	1 Day Duty £8.00	Total	Total Number	(%)
North East	85,857	24,936	15,648	5,942	58,099	190,482	2,859	1,246	571	327	1,620	6,623	197,105	14%
Anglian	116,147	30,081	20,496	8,340	60,346	235,410	304	196	257	338	381	1,476	236,886	16%
Thames	118,811	25,595	18,461	10,208	78,650	251,725	1,136	353	396	558	1,123	3,566	255,291	17%
Southern	59,874	14,738	11,834	6,042	42,672	135,160	460	249	240	214	333	1,496	136,656	9%
South West	46,684	12,169	8,019	3,631	30,401	100,904	1,787	886	314	211	870	4,068	104,972	7%
Midlands	134,729	41,893	22,163	7,773	76,016	282,574	1,249	809	342	334	708	3,442	286,016	19%
E.A. Wales	25,430	7,535	5,360	1,601	18,610	58,536	3,502	1,925	735	203	757	7,122	65,658	5%
North West	82,008	22,863	14,265	5,757	40,379	165,272	3,558	1,910	635	318	1,277	7,698	172,970	11%
Unknown	1,406	380	370	2,503	3,123	7,782	133	69	16	176	276	670	8,452	1%
<b>Total</b>	<b>670,946</b>	<b>180,190</b>	<b>116,616</b>	<b>51,797</b>	<b>408,296</b>	<b>1,427,845</b>	<b>14,988</b>	<b>7,643</b>	<b>3,506</b>	<b>2,679</b>	<b>7,345</b>	<b>36,161</b>	<b>1,464,006</b>	
<b>Total Value (£)</b>	<b>£18,115,542</b>	<b>£3,243,420</b>	<b>£583,080</b>	<b>£517,970</b>	<b>£1,531,110</b>	<b>23,991,122</b>	<b>£1,079,136</b>	<b>£366,864</b>	<b>£17,530</b>	<b>£61,617</b>	<b>£58,760</b>	<b>£1,583,907</b>	<b>£25,381,542</b>	

(a) Full and concession salmon and sea trout licences include upgrades from non-migratory trout and coarse fish licences.

## Section 6

**Table 4 Net Season & Weekly Closure Times- Salmon & Sea Trout – 2010 Season**

Environment Agency Region	River/ Fishery	Fishing Method	Season inclusive dates (see below )	Weekly closure times	Voluntary Closures/Buyouts Other
North East Northumbria	Coastal (N)	Drift nets	1.6 - 31.8	1800 Fri to 0600 Mon	Nightly close time 2000 to 0400
		T nets (a)	26.3 - 31.8	1800 Fri to 0600 Mon	Nightly close time 2000 to 0400
	Coastal (S)	Drift nets	1.6 - 31.8	1800 Fri to 0600 Mon	Nightly close time 2000 to 0400
		T nets (a)	26.3 - 31.8	1800 Fri to 0600 Mon	Nightly close time 2000 to 0400
North East Yorkshire	Coastal	Drift nets T or J nets (a)	1.6 - 31.8 26.3 - 31.8	1800 Fri to 0600 Mon 2000 Fri to 0600 Mon	Nightly close time 2000 to 0400
Anglian	Coastal	Drift nets (a) Other nets (a)	1.4 - 30.9 1.4 - 30.9	0600 Sun to 2400 Mon 0600 Sun to 2400 Mon	
Southern	Hants area	Seine nets	15.2 - 31.7	0600 Sat to 0600 Mon	
South West	Avon + Stour	Seine nets	1.6 - 31.7	0600 Sat to 0600 Mon &	All salmon caught to be released
	Poole Harbour	Seine net	1.6 - 31.7	2100 - 0500 Wed, Thu, Fri	All salmon caught to be released
	Parrett	Dip nets Patcher ranks	1.6 - 31.7 1.6 - 31.7	0600 Sat to 0600 Mon no closure period	
	Exe	Seine nets	1.6 - 14.8	0600 Sat to 0600 Mon	Partial buyout
	Teign	Seine nets (a)	15.3 - 31.7	0600 Sat to 0600 Mon	Partial buy out
	Dart	Seine nets (a)	15.3 - 16.8	0600 Sat to 0600 Mon	Partial buy out
	Avon	Fixed Engine	1.6 - 15.9	0600 Sat to 0600 Mon	Licence purchased by SW Region and not used
	Camel	Drift nets	1.6 - 31.8	0600 Sat to 0600 Mon	Buyout from 1/6 to 31/8
	Tavy	Seine nets	1.6 - 31.8	0600 Fri to 0600 Mon (2.3 - 31.5)	Buyout - complete season
	Tamar	Seine nets	1.6 - 31.8	&	Buyout - complete season
	Lynher	Seine nets	1.6 - 31.8	0600 Sat to 0600 Mon (1.6 - 31.8)	Buyout - complete season
	Fowey	Seine nets (a)	2.3 - 31.8	0600 Sat to 0600 Mon	Buyout- complete season
	Taw/Torridge	Seine nets	1.6 - 31.7	0600 Fri to 0600 Mon	Partial Buyout
	Lyn	Fixed Engine	1.6 - 31.8	0600 Sat to 0600 Mon	Right to fish bought by EA in 2003.
Midlands	Severn	Seine nets	1.6 - 31.8	1200 Sat to 0600 Mon	
		Lave nets	1.6 - 31.8	1200 Sat to 0600 Mon	
		Fixed Engines	1.6 - 15.8	no closure period	
Environment Agency Wales	Wye	Lave nets	1.6 - 31.8	0600 Sat to 0600 Mon	
	Tywi	Coracle nets (a) Seine nets	1.3 - 31.7 1.3 - 31.7	0600 Sat to 1200 Mon 0600 Sat to 1200 Mon	
	Taf	Wade net	1.6 - 31.7	0600 Sat to 1200 Mon	
		Coracle net (a)	1.3 - 31.7	0600 Sat to 1200 Mon	
	S.W.Coastal	Wade nets	1.6 - 31.8	0600 Sat to 0600 Mon	Fishery closed January 2005
		Seine nets	1.6 - 31.8	0600 Sat to 0600 Mon	Fishery closed January 2005
	E+W.Cleddau	Compass nets	1.6 - 31.8	0600 Sat to 1200 Mon	
	NeVERN	Seine net (a)	1.4 - 31.8	0600 Sat to 1200 Mon	
	Teifi	Seine nets (a)	1.4 - 31.8	0600 Sat to 1200 Mon	
		Coracle nets (a)	1.4 - 31.8	0600 Sat to 1200 Mon	
	Dyfi	Seine nets (a)	1.4 - 31.8	0600 Sat to 0600 Mon	
	Dysynni	Seine net	1.6 - 31.8	0600 Sat to 0600 Mon	
	Mawddach	Seine nets	1.6 - 31.8	0600 Sat to 0600 Mon	
	Glaslyn	Seine nets	1.6 - 31.8	0600 Sat to 0600 Mon	Fishery closed January 2005
	Dwyfawr	Seine nets	1.6 - 31.8	0600 Sat to 0600 Mon	Fishery closed January 2005
	Seiont/Gwyrfai	Seine nets	1.6 - 31.8	0600 Sat to 0600 Mon	Fishery closed January 2005
	Ogwen	Seine nets	1.6 - 31.8	0600 Sat to 0600 Mon	Fishery closed January 2005
	Conwy	Basket trap	1.6 - 31.8	no closure period	
		Seine nets	1.6 - 31.8	0600 Sat to 0600 Mon	
	Clwyd	Sling nets	1.6 - 31.8	2400 Thur to 2400 Sun	Fishery closed January 2005
Dee	Trammel nets	1.6 - 31.8	2400 Thur to 2400 Sun	Bought out 2009 (0 NLO until 2015)	
	Seine nets	1.6 - 31.8	2400 Thur to 2400 Sun	Bought out 2009 (0 NLO until 2015)	
North West	Ribble	Drift nets	1.6 - 31.8	0600 Sat to 0600 Mon	
	Lune	Haaf nets	1.6 - 31.8	0600 Sat to 0600 Mon	
		Drift nets	1.6 - 31.8	0600 Sat to 0600 Mon	
		Seine net	1.6 - 31.8	0600 Sat to 0600 Mon	
	Kent	Lave nets	1.6 - 31.8	0600 Sat to 0600 Mon	
		Lave nets	1.7 - 31.8	0600 Sat to 0600 Mon	
	S&W Cumbria	Drift nets	1.6 - 31.8	0600 Sat to 0600 Mon	Fishery closed 2005
	Eden	Coops	1.6 - 31.8	0600 Sat to 0600 Mon	
	Solway	Haaf nets	1.6 - 9.9	2200 Fri to 1000 Mon; daily 2200-1000	

(a) Sea trout fisheries exempted from national byelaws. All salmon caught before 1 June to be released alive.

Section 6

Table 5 Rod Fishing Season for Salmon & sea Trout – including method restrictions & bag limits 2010

Environment Agency Region	River	Salmon Season (inclusive dates)	Sea trout Season (inclusive dates)	*Method Restrictions	*Bag limits/Catch and Release etc.
North East	Ain	1.2 - 31.10	3.4 - 31.10		
	Coquet	1.2 - 31.10	3.4 - 31.10		
	Tyne	1.2 - 31.10	3.4 - 31.10		
	Wear	1.2 - 31.10	3.4 - 31.10		
	Tees	1.2 - 31.10	3.4 - 31.10		
	Esk (Yorks.)	6.4 - 31.10	6.4 - 31.10		
	Ouse (Yorks.)	6.4 - 31.10	6.4 - 31.10		
Anglian	Region	1.4 - 28.9	1.4 - 28.9		2 bag limit per day
Thames	Thames	1.4 - 30.9	1.4 - 30.9		2 salmon bag limit a day
Southern	Test	17.1 - 2.10	1.5 - 31.10	Voluntary worm ban throughout season	Catch & Release all season for salmon (local agreement)
	Itchen	17.1 - 2.10	1.5 - 31.10	Voluntary worm ban throughout season	Catch & Release all season for salmon (local agreement)
South West	Avon (Hants.)	1.2 - 31.8	15.4 - 31.10	artificial fly only before 15/5	Catch & Release all season for salmon (local agreement)
	Piddle	1.3 - 31.8	15.4 - 31.10	artificial fly only before 15/5	
	Frome	1.3 - 31.8	15.4 - 31.10	artificial fly only before 15/5	
	Axe	15.3 - 31.10	15.4 - 31.10	no shrimp, prawn, worm or maggot. Fly only after 31/7 below Axbridge	Fly only and mandatory catch and release during trial extension period
	Exe	14.2 - 30.9	15.3 - 30.9	no worm or maggot	
	Teign	1.2 - 30.9	15.3 - 31.10	no worm or maggot before 1/6	
	Dart	1.2 - 30.9	15.3 - 30.9	no worm or maggot. No shrimp/prawn exc. below Staverton Br.	
	Avon (Devon)	15.4 - 30.11	15.4 - 30.9	no worm or maggot	
	Plym	1.4 - 15.12	3.3 - 30.9	no worm, maggot, shrimp or prawn after 31/8	
	Tavy	1.3 - 14.10	3.3 - 30.9	no worm, maggot, shrimp or prawn after 31/8	
	Tamar	1.3 - 14.10	3.3 - 30.9	no worm, maggot, shrimp or prawn after 31/8	
	Lynher	1.3 - 14.10	3.3 - 30.9	no worm, maggot, shrimp or prawn after 31/8	
	Fowey	1.4 - 15.12	1.4 - 30.9		
	Camel	1.4 - 15.12	1.4 - 30.9		
	Taw	1.3 - 30.9	15.3 - 30.9	no shrimp, prawn, worm or maggot. Fly only 1/4 to 31/5	2 (2) salmon a day, 3 (2) a week and 10 (5, 7) in a season, ST 5 (2),15 (7) and 40 (20) respectively
Torridge	1.3 - 30.9	15.3 - 30.9	no shrimp, prawn, worm or maggot. Fly only 1/4 to 31/5	(2 salmon limit before June 1st) & return of all salmon > 70 cm after Aug 1st.	
Lyn	1.2 - 31.10	15.3 - 30.9	no worm or maggot before 1/6		
Yealm	1.4 - 15.12	3.3 - 30.9	no worm, maggot, shrimp or prawn after 31/8		
Midlands	Severn	1.2 - 7.10	18.3 - 7.10	no float fishing with lure or bait	
Environment Agency Wales	Wye	3.3 - 17.10 (a)	3.3 - 17.10 (a)	Fly only 1.9 to 17.10. No bait all season	Catch & Release salmon and sea trout 18.10 to 25.10
	Usk	3.3 - 17.10	3.3 - 17.10	Fly only 3.3 - 1.6. Fly and Spin 15.9 - 17.10	
	Taff	20.3 - 17.10	20.3 - 17.10	Fly and Spin 20.3 - 15.4 & 1.10 - 17.10	
	Ogmore	20.3 - 17.10	20.3 - 17.10	Fly and Spin 20.3 - 15.4 & 1.10 - 17.10	
	Afan	20.3 - 17.10	20.3 - 17.10	Fly and Spin 20.3 - 15.4 & 1.10 - 17.10	
	Neath	20.3 - 17.10	20.3 - 17.10	Fly and Spin 20.3 - 15.4 & 1.10 - 17.10	
	Tawe	20.3 - 17.10	20.3 - 17.10	Fly and Spin 20.3 - 15.4 & 7.10 - 17.10	
	Loughor	20.3 - 17.10	20.3 - 17.10	Fly and Spin 20.3 - 15.4 & 7.10 - 17.10	
	Tywi	1.4 - 17.10	1.4 - 17.10	Fly and Spin 7.10 - 17.10	daily bag of 2 salmon & 4 sea trout, weekly bag of 5 salmon. C&R 8.10 to 17.10
	Taf	1.4 - 17.10	1.4 - 17.10	Fly and Spin 7.10 - 17.10	daily bag of 2 salmon & 4 sea trout, weekly bag of 5 salmon. C&R 8.10 to 17.10
	E+W.Cleddau	1.4 - 17.10	1.4 - 17.10	Fly and Spin 7.10 - 17.10	daily bag of 2 salmon & 4 sea trout, weekly bag of 5 salmon. C&R 8.10 to 17.10
	Nevern	1.4 - 17.10	1.4 - 17.10	Fly and Spin 7.10 - 17.10	daily bag of 2 salmon & 4 sea trout, weekly bag of 5 salmon
	Teifi	1.4 - 17.10	1.4 - 17.10	Fly and Spin 7.10 - 17.10	daily bag of 2 salmon & 4 sea trout, weekly bag of 5 salmon
	Aeron	1.4 - 17.10	1.4 - 17.10	Fly and Spin 7.10 - 17.10	daily bag of 2 salmon & 4 sea trout, weekly bag of 5 salmon
	Ystwyth	1.4 - 17.10	1.4 - 17.10	Fly and Spin 7.10 - 17.10	daily bag of 2 salmon & 4 sea trout, weekly bag of 5 salmon
	Rheidol	1.4 - 17.10	1.4 - 17.10	Fly and Spin 7.10 - 17.10	daily bag of 2 salmon & 4 sea trout, weekly bag of 5 salmon
	Dyfi	20.3 - 17.10 (some sections to 31.10)	20.3 - 17.10 (some sections to 31.10)	Fly and Spin 20.3 - 15.4 & 7.10 - 31.10	Catch & Release salmon and sea trout 18.10 to 31.10
	Dysynni	20.3 - 17.10	20.3 - 17.10	Fly and Spin 20.3 - 15.4 & 7.10 - 17.10	
	Mawddach	20.3 - 17.10	20.3 - 17.10	Fly and Spin 20.3 - 15.4 & 7.10 - 17.10	
	Artro	20.3 - 17.10	20.3 - 17.10	Fly and Spin 20.3 - 15.4 & 7.10 - 17.10	
	Dwyrdd	20.3 - 17.10 (some sections to 31.10)	20.3 - 17.10 (some sections to 31.10)	Fly and Spin 20.3 - 15.4 & 7.10 - 31.10	Catch & Release salmon and sea trout 18.10 to 31.10
	Glaslyn	20.3 - 17.10	20.3 - 17.10	Fly and Spin 20.3 - 15.4 & 7.10 - 17.10	
	Dwyfawr	20.3 - 17.10	20.3 - 17.10	Fly and Spin 20.3 - 15.4 & 7.10 - 17.10	
	Llyfni	20.3 - 17.10	20.3 - 17.10	Fly and Spin 20.3 - 15.4 & 7.10 - 17.10	
	Gwyrfai	20.3 - 17.10	20.3 - 17.10	Fly and Spin 20.3 - 15.4 & 7.10 - 17.10	
	Seiont	20.3 - 15.11	20.3 - 15.11	Fly and Spin 20.3 - 15.4 & 7.10 - 15.11	Catch & Release salmon and sea trout 18.10 to 15.11
	Ogwen	20.3 - 17.10 (some sections to 31.10)	20.3 - 17.10 (some sections to 31.10)	Fly and Spin 20.3 - 15.4 & 7.10 - 31.10	Catch & Release salmon and sea trout 18.10 to 31.10
	Conwy	20.3 - 17.10 (some sections to 31.10)	20.3 - 17.10 (some sections to 31.10)	Fly and Spin 20.3 - 15.4 & 7.10 - 31.10	Catch & Release salmon and sea trout 18.10 to 31.10
	Clwyd	20.3 - 17.10	20.3 - 17.10	Fly and Spin 20.3 - 1.6, Fly only 1.10 - 17.10	
	Dee and tribs	3.3 - 17.10	20.3 - 17.10	Fly only 3.3 - 31.5, Fly & Spin only 1.6 - 15.6, Fly, Spin & Bait 16.6 - 30.9, Fly & Spin only 1.10 - 17.10	

Section 6

Table 5 (continued)

Rod Fishing Season for Salmon & sea Trout – including method restrictions & bag limits 2010

Environment Agency Region	River	Salmon Season (inclusive dates)	Sea trout Season (inclusive dates)	*Method Restrictions	*Bag limits/Catch and Release etc.
North West	Ribble	1.2 - 31.10	1.4 - 30.9		Byelaw (28/02/07) No more than 2 salmon can be killed per season  Byelaw (NW-14/02/00) no more than four salmon may be killed during the season.  Byelaw (NW-08/05/03) requiring release of all salmon after capture. Byelaw (NW-08/05/03) requiring release of all salmon after capture.  Salmon:16/6-14/10 daily bag 2,10/9-14/10 C&R (F).Sea trout:1/4-20/9 daily bag 2,10/9-30/9 C&R(F)
	Wyre	1.2 - 31.10	1.4 - 30.9		
	Lune	1.2 - 31.10	1.4 - 30.9		
	Kent	1.2 - 31.10	1.4 - 30.9		
	Leven	1.2 - 31.10	1.4 - 30.9		
	Crake	1.2 - 31.10	1.4 - 30.9		
	Duddon	1.2 - 31.10	1.4 - 30.9		
	Esk (Cumbrian)	1.2 - 31.10	1.4 - 30.9		
	Irt	1.2 - 31.10	1.4 - 30.9		
	Calder	1.2 - 31.10	1.4 - 30.9		
	Ehen	1.2 - 31.10	1.4 - 30.9		
	Derwent	1.2 - 31.10	1.4 - 30.9		
	Ellen	1.2 - 31.10	1.4 - 30.9		
	Eden	15.1 - 14.10	1.4 - 30.9		
	Esk (Border)	1.2 - 31.10	1.4 - 30.9		
Others	1.2 - 31.10 (b)	1.4 - 30.9 (b)			
Notes	(a) Season 3.3 to 25.10 Rivers Irfon, Ithon and main River Wye upstream of Llanwrthwl Bridge (b) Rivers Annas, Bleng, Mite * National spring salmon byelaws apply Note: EA Wales - variations apply to Anglesey and Llleyn Paninsula (check local byelaws). Always check local byelaws and club rules before fishing.				

Table 6 Main Updates for Rod & Net fisheries in 2010

Region	Area	Update
National	England & Wales	Introduction of the The Eels (England and Wales) Regulations 2009 Statutory Instrument that came in force on 15 January 2010. This SI introduced eel fishing close season from 1st October 2010 and ending on 31st March 2011 and elver fishing close season from 26th May 2010 and ending on 14th February 2011.
National	England & Wales	New powers that were included in the Marine and Coastal Access Act 2009 were implemented in 2010. These included: - extension to the list of prohibited instruments to include the tailer (even as an accessory to angling); - wider byelaw making powers (e.g. allowing amendment to close seasons entirely in byelaws and not constrained by statutory minimum durations and start/end dates); - emergency byelaw making powers; - clarification that byelaw making powers apply to privileged fixed engines as they do for all fixed engines; - power to place conditions on historic installations (privileged fixed engines).

**Section 6  
Table 7**

**Salmon Net Catches – 2010 Season**

Environment Agency Region	River/ Fishery	Fishing Method	No. Lics	Phase Out NLO										Total Number	Total Weight (kg)	Average Weight (kg)	
					Feb	Mar	Apr	May	Jun	Jul	Aug	Sep	Un-Known				
North East Northumbria	Coastal (N)	Drift nets	12 (a)	X	-	-	-	-	2,215	2,800	6,529	-	0	11,544	42,613	4	
		T nets	32 (a)		-	0	0	0	1,241	2,133	4,088	-	0	7,462	17,226	2	
	Coastal (S)	Drift nets	0	X	-	-	-	-	-	-	-	-	0	0	-	-	
		T nets	1		-	0	0	0	0	9	40	-	0	49	306	6	
	North East Yorkshire	Coastal	Drift nets	2	X	-	-	-	-	85	247	338	-	0	670	2,688	4
T or J nets*			28		-	0	0	0	50	81	106	20	0	257	929	4	
Whole area		Total	75		-	0	0	0	3,591	5,270	11,101	4	0	19,982	63,762	3	
Anglian	Coastal	Drift nets	23	X	-	-	0	1	0	0	0	0	0	1	8	8	
		Other nets (var.)	7	X	-	-	0	0	0	0	0	0	0	0	0	0	
	Whole area	Total	30		-	-	0	1	0	0	0	0	0	1	8	8	
Southern	Hants area	Seine nets	1		-	-	-	-	0	0	-	-	0	0	0	0	
	Whole area	Total	1		-	-	-	-	0	0	-	-	0	0	0	0	
South West	Avon + Stour**	Seine nets	2		-	-	-	-	8	33	-	-	0	41	125	3	
	Poole Harbour	Seine net	1		-	-	-	-	0	2	-	-	0	2	4	2	
	Exe	Seine nets	11	X	-	-	-	-	11	50	60	-	0	121	361	3	
	Teign	Seine nets	3	X	-	-	-	-	26	69	24	-	0	119	333	3	
	Dart	Seine nets	3	X	-	-	-	-	6	35	28	-	0	69	195	3	
	Camel	Drift nets	6		-	-	-	-	15	0	0	-	0	15	58	0	
	Tavy	Seine nets	2		-	-	-	-	0	0	0	0	0	0	0	0	
	Tamar	Seine nets	3		-	-	-	-	0	0	0	0	0	0	0	0	
	Lynher	Seine nets	1		-	-	-	-	0	0	0	0	0	0	0	0	
	Fowey	Seine nets	1		-	0	0	0	0	0	0	-	0	0	0	0	
	Taw/Torridge	Seine nets	3	X	-	0	-	-	36	103	0	-	0	139	441	3	
	Whole area	Total	36		-	0	0	0	102	292	112	-	0	506	1,517	3	
	Midlands	Severn	Seine nets	1	X	-	-	-	-	0	0	0	-	0	0	0	0
Lave nets			25 (b)	X	-	-	-	-	59	20	31	-	0	110	492	4	
Fixed Engines			2		-	-	-	-	39	74	15	-	0	128	538	4	
Whole area		Total	28		-	-	-	-	98	94	46	-	0	238	1,030	4	
Environment Agency Wales	Wye	Lave nets	6		-	-	-	-	0	2	5	-	0	7	21	3	
		Seine nets	3		-	-	-	-	6	14	0	-	0	20	73	4	
		Coracle nets	7		-	-	-	-	15	25	-	-	0	40	141	4	
		River total	10		-	-	-	-	21	39	0	-	0	60	214	4	
	Taf	Wade net	1		-	-	-	-	0	0	0	-	0	0	0	0	
		Coracle net	1		-	-	-	-	0	0	0	-	0	0	0	0	
		River total	2		-	-	-	-	0	0	0	-	0	0	0	0	
	E+W.Cleddau	Compass nets	6		-	-	-	-	0	4	9	-	0	13	37	3	
		Seine net	1		-	-	-	-	0	0	0	-	0	0	0	0	
	Teifi	Seine nets	2		-	-	-	-	6	3	47	-	0	56	170	3	
		Coracle nets	11		-	-	-	-	9	11	58	-	0	78	240	3	
		River total	13		-	-	-	-	15	14	105	-	0	134	410	3	
	Dyfi	Seine nets	3		-	-	-	-	1	1	0	-	0	2	10	5	
		Seine net	1		-	-	-	-	0	0	0	-	0	0	0	0	
	Mawddach	Seine nets	2		-	-	-	-	0	0	0	-	0	0	0	0	
		Seine nets	0		-	-	-	-	0	0	0	-	0	0	0	0	
	Conwy	Basket trap	0		-	-	-	-	0	0	0	-	0	0	0	0	
		Seine nets	3		-	-	-	-	1	2	4	-	0	7	26	4	
		River total	3		-	-	-	-	0	2	4	-	0	7	26	0	
	Dee	Trammel nets	0	X	-	-	-	-	0	0	0	-	0	0	0	0	
		Draft nets	0	X	-	-	-	-	0	0	0	-	0	-	-	-	
		River total	0		-	-	-	-	0	0	0	-	0	-	-	-	
	North West	Ribblesdale	Drift nets	5		-	-	-	-	6	28	61	-	0	95	440	5
			Haaf nets	12		-	-	-	-	35	37	171	-	0	243	840	3
			Drift nets	7		-	-	-	-	27	49	135	-	0	211	737	3
			Seine net	0	X	-	-	-	-	-	-	-	-	-	-	-	-
			River total	19		-	-	-	-	62	86	306	-	0	454	1,577	3
Kent		Lave nets	7		-	-	-	-	3	3	20	-	0	26	98	4	
		Lave nets	2		-	-	-	-	0	0	2	-	0	2	8	4	
Eden + Esk (Solway)		Haaf nets	66		-	-	-	-	134	143	627	155	0	1,059	3,608	3	
		Coop nets	3		-	-	-	-	1	11	17	0	0	29	108	4	
Whole area		Total	102		-	-	-	-	206	271	1,033	155	0	1,665	5,839	4	
England and Wales			319		-	0	0	1	4,035	5,989	12,415	159	0	22,615	72,873	3.22	

Key: (a) Separate licences for drift and T nets were issued for the first time in the northern area in 1993. (b) Figures for half- and full-season lave nets combined.  
(X) Denotes that a phase out Net Limitation Order (NLO) is in place.

Notes: - Salmon caught pre 1 June released alive  
- A dash is used to denote months that fall entirely within the annual close season.  
\* Special dispensation was given, for this year only, to allow fishing for 2 weeks in Sept in exchange for 2 weeks in June to assess the impact of nets on birds in Filey Bay.

\*\* Avon/Stour - all salmon released following capture. Poole Harbour - July fish tagged (CEH) and released

**Section 6  
Table 8**

**Sea Trout Net Catches – 2010 Season**

Environment Agency Region	River/ Fishery	Fishing Method	No. Lics	Phase Out NLO	Month									Total Number	Total Weight (kg)	Average Weight (kg)	
					Feb	Mar	Apr	May	Jun	Jul	Aug	Sep	Un-known				
North East Northumbria	Coastal (N)	Drift nets	12 (a)	X	-	-	-	-	4,484	3,615	1,611	-	0	9,710	21,534	2	
		T nets	32 (a)		-	3	42	2,963	13,505	8,969	3,954	-	0	29,436	29,453	1	
	Coastal (S)	Drift nets	0	X	-	-	-	-	-	-	-	-	0	-	-	-	
		T nets	1		-	0	0	0	64	42	217	-	0	323	598	2	
	North East Yorkshire	Coastal	Drift nets	2	X	-	-	-	-	327	357	277	-	0	961	2,549	3
T or J nets*			28		-	0	81	1,866	7,045	4,770	1,070	284	0	15,116	26,734	2	
	Whole area	Total	75		-	3	123	4,829	25,425	17,753	7,129	284	0	55,546	80,868	1	
Anglian	Coastal	Drift nets	23	X	-	-	17	58	101	97	46	96	0	415	488	1	
		Other nets (var.)	7	X	-	-	0	7	18	11	10	10	0	56	90	2	
		Total	30		-	0	17	65	119	108	56	106	0	471	578	1	
Southern	Beaulieu	Seine nets	1		-	-	-	-	0	1	0	-	0	1	2	2	
South West	Avon + Stour	Seine nets	2		-	-	-	-	120	93	-	-	0	213	460	2	
	Poole Harbour**	Seine net	1		-	-	-	-	0	0	-	-	0	0	0	0	
	Exe	Seine nets	11	X	-	-	-	-	1	0	0	-	0	1	2	2	
	Teign	Seine nets	3 (b)	X	-	0	21	62	95	10	0	-	0	188	248	1	
	Dart	Seine nets	3 (b)	X	-	0	25	73	34	52	12	-	0	196	286	1	
	Tavy	Seine nets	2		0	0	0	0	0	0	0	0	0	0	0	0	
	Tamar	Seine nets	3		0	0	0	0	0	0	0	0	0	0	0	0	
	Lynher	Seine nets	1		0	0	0	0	0	0	0	0	0	0	0	0	
	Camel	Drift nets	6		-	-	-	-	1	0	-	-	0	1	2	2	
	Fowey	Seine nets	1 (b)		-	0	0	0	0	0	0	-	0	0	0	0	
	Taw/Torridge	Seine nets	3	X	-	-	-	-	52	41	0	-	0	93	92	1	
	Whole area	Total	36		-	0	46	135	303	196	12	-	0	692	1,091	2	
	Midlands	Severn	Seine nets	1	X	-	0	0	0	0	0	0	0	0	0	0	0
Lave nets			25 (b)	X	-	0	0	0	1	0	0	0	0	1	2	2	
Fixed Engines			2		-	0	0	0	0	0	0	0	0	0	0	0	
Total			28		-	-	-	0	1	0	-	0	1	2	2		
Environment Agency Wales	Tywi	Seine nets	3 (b)		-	7	88	120	94	2	0	-	0	311	726	2	
		Coracle nets	7 (b)		-	10	209	241	175	20	0	-	0	655	1,674	3	
		River total	10		-	17	297	361	269	22	0	-	0	966	2,400	2	
	Taf	Wade net	1		-	-	-	-	0	0	-	-	0	0	0	0	
		Coracle net	1 (b)		-	-	0	0	0	0	-	-	0	0	0	0	
		River total	2		-	-	0	0	0	0	0	-	0	0	0	0	
	E+W.Cleddau	Compass nets	6		-	-	-	-	0	0	0	-	0	0	0	0	
		Seine nets	2 (b)		-	-	0	131	86	3	2	-	0	222	138	1	
	Teifi	Coracle nets	11 (b)		-	-	79	336	329	33	9	-	0	786	550	1	
		River total	13		-	-	79	467	415	36	11	-	0	1,008	688	1	
	Dyfi	Seine nets	3 (b)		-	-	1	30	33	10	1	-	0	75	70	1	
	Dysynni	Seine net	1		-	-	-	-	7	4	5	-	0	16	39	2	
	Mawddach	Seine nets	2		-	-	-	0	0	0	0	-	0	0	0	0	
	Nevern	Seine nets	1		-	-	-	1	4	1	0	-	0	6	12	2	
	Conwy	Seine nets	3		-	-	-	-	1	2	0	-	0	3	4	1	
	Clwyd	Sling nets	0	X	-	-	-	-	-	-	-	-	-	-	-	-	
	Dee	Seine nets	0	X	-	-	-	-	-	-	0	-	0	0	0	0	
	Whole area	Total	41		0	17	378	862	726	74	17	0	0	2,074	3,213	2	
	North West	Ribble	Drift nets	5		-	-	-	-	12	0	22	-	0	34	63	2
			Haaf nets	12		-	-	-	-	586	86	5	-	0	677	340	1
Drift nets			7		-	-	-	-	64	11	1	-	0	76	104	1	
Seine net			0	X	-	-	-	-	0	0	0	-	0	0	0	0	
River total			19		-	-	-	-	650	97	6	-	0	753	444	1	
Kent		Lave nets	7		-	-	-	-	2	3	1	-	0	6	8	1	
		Lave nets	2		-	-	-	-	0	0	0	-	0	0	0	0	
Solway		Haaf nets	66		-	-	-	-	554	60	14	9	0	637	702	1	
Eden		Coop nets	3		-	-	-	-	1	2	0	-	0	3	5	2	
Whole area		Total	102		-	-	-	-	1,219	162	43	9	0	1,433	1,222	1	
England and Wales			313	0	0	0	20	564	5,891	27,793	18,294	7,257	399	0	60,218	86,976	1.44
<p>Key: (a) Separate licences for drift and T nets were issued for the first time in the northern area in 1993.  (b) Sea trout fisheries exempted from national byelaws  (X) Denotes that a phase out Net Limitation Order (NLO) is in place.</p> <p>Notes: Both the River Wye and Severn net fisheries catch very few sea trout so are not included in this table A dash denotes months that fall entirely within the annual close season.  * Special dispensation was given to allow fishing for 2 weeks in Sept in exchange for 2 weeks in June to assess the impact of nets on birds in Filey Bay.  ** All sea trout tagged (GWCT) and released following capture</p>																	

## Section 6

Table 9

## Salmon Rod Catches (released totals in brackets) – 2010 Season

Environment Agency Region	River	Jan	Feb	Mar	Apr	May	Jun	Jul	Aug	Sep	Oct	Nov	Dec	Un-known	Total Number															
North East	Aln	-	-	-	-	-	-	3	(2)	9	(5)	24	(13)	20	(14)	-	-	-	-	56	(34)									
	Coquet	-	1	(1)	2	(2)	5	(5)	8	(8)	21	(6)	48	(12)	130	(27)	239	(120)	523	(348)	-	-	-	-	1	-	978	(529)		
	Esk (Yorks.)	-	-	-	1	(1)	-	-	-	-	7	(5)	6	(3)	11	(7)	34	(12)	111	(72)	-	-	-	-	2	(1)	172	(101)		
	Ouse (Yorks.)	-	-	1	(1)	4	(0)	1	(1)	1	(1)	4	(4)	2	(1)	-	-	5	(4)	7	(5)	-	-	-	-	-	-	25	(17)	
	Tees	-	-	-	-	1	(1)	-	-	-	-	-	-	-	-	-	6	(2)	5	(5)	20	(11)	37	(30)	-	-	-	-	69	(49)
	Tyne	-	-	14	(14)	45	(45)	54	(54)	69	(68)	75	(43)	249	(94)	731	(323)	1696	(903)	2132	(1473)	11	(9)	-	-	39	(19)	5115	(3045)	
	Wear	-	-	1	(1)	3	(3)	-	-	5	(5)	30	(19)	52	(22)	163	(84)	455	(262)	794	(531)	4	(2)	-	-	24	(10)	1531	(939)	
	Other	-	-	-	-	-	-	-	-	-	-	-	-	-	-	-	-	-	1	(0)	-	-	-	-	-	-	-	-	1	(0)
	<b>Total</b>		-	-	17	(17)	56	(52)	60	(60)	83	(82)	137	(77)	366	(136)	1049	(451)	2473	(1325)	3625	(2473)	15	(11)	0	(0)	66	(30)	7947	(4714)
Thames	Thames	-	-	-	-	-	-	-	-	-	-	1	(1)	-	-	1	(1)	-	-	-	-	-	-	-	-	-	-	2	(0)	
Anglian	Unknown	-	-	-	-	-	-	-	-	1	(1)	-	-	-	-	-	-	-	-	-	-	-	-	-	-	-	-	1	(1)	
Southern	Itchen (a)	-	-	-	-	1	(1)	4	(4)	14	(14)	46	(46)	113	(113)	68	(67)	6	(6)	-	-	-	-	-	-	-	-	252	(251)	
	Ouse (Sussex)	-	-	-	-	-	-	-	-	3	(3)	-	-	-	-	-	-	1	(0)	-	-	-	-	-	-	-	-	4	(3)	
	Test (a)	-	-	-	-	-	-	4	(2)	5	(5)	21	(21)	46	(46)	29	(28)	5	(5)	-	-	-	-	-	-	-	-	110	(107)	
	<b>Total</b>	-	0	(0)	0	(0)	1	(1)	8	(6)	22	(22)	67	(67)	159	(159)	97	(95)	12	(11)	0	(0)	0	(0)	0	(0)	0	(0)	366	(361)
South West	Avon (Devon)	-	-	1	(1)	-	-	-	-	-	-	1	(1)	3	(3)	3	(1)	14	(9)	39	(33)	-	-	-	-	-	-	61	(48)	
	Avon (Hants.)	-	-	1	(1)	1	(1)	2	(2)	14	(14)	14	(14)	7	(6)	6	(6)	1	(1)	1	(1)	-	-	-	-	-	-	47	(46)	
	Axe	-	-	-	-	-	-	-	-	-	-	2	(2)	2	(2)	-	-	4	(2)	-	-	-	-	-	-	-	-	8	(6)	
	Camel	-	-	-	-	-	-	2	(0)	4	(4)	29	(11)	55	(17)	65	(33)	135	(70)	166	(108)	64	(42)	26	(16)	546	(301)			
	Dart	-	-	2	(2)	2	(2)	-	-	-	-	2	(1)	7	(4)	33	(27)	38	(34)	6	(6)	-	-	-	-	-	-	90	(76)	
	Erme	-	-	-	-	-	-	-	-	-	-	-	-	-	-	-	1	(0)	6	(1)	-	-	-	-	-	-	-	7	(1)	
	Exe	-	-	2	(2)	3	(3)	3	(3)	11	(11)	24	(17)	38	(22)	107	(58)	173	(121)	43	(42)	-	-	-	-	-	-	404	(279)	
	Fowey	-	-	-	-	-	-	1	(1)	-	-	2	(1)	13	(9)	22	(12)	38	(28)	81	(58)	115	(96)	32	(25)	1	(0)	305	(230)	
	Frome	1	(1)	-	-	-	-	-	1	(1)	1	(1)	12	(12)	10	(10)	3	(3)	15	(15)	-	-	-	-	-	-	-	43	(43)	
	Lyn	-	-	-	-	-	-	-	7	(7)	16	(7)	21	(10)	24	(12)	29	(20)	14	(10)	-	-	-	-	-	-	-	111	(66)	
	Lynher	-	-	-	-	-	-	-	1	(1)	-	-	5	(3)	7	(2)	43	(26)	78	(60)	1	(1)	-	-	-	-	-	135	(93)	
	Piddle	-	-	-	-	1	(1)	-	-	-	-	-	-	-	-	-	-	-	-	-	-	-	-	-	-	-	-	1	(1)	
	Plym	-	-	-	-	-	-	-	-	-	-	-	-	-	-	-	2	(0)	1	(1)	12	(8)	3	(1)	-	-	-	18	(10)	
	Tamar	-	-	-	-	-	4	(4)	10	(10)	16	(12)	27	(16)	60	(37)	107	(66)	161	(123)	1	(1)	-	-	1	(0)	387	(269)		
	Tavy	-	-	-	-	2	(2)	-	-	-	-	1	(1)	11	(7)	22	(15)	46	(21)	43	(24)	2	(1)	-	-	1	(1)	128	(72)	
	Taw	-	-	-	-	8	(8)	5	(5)	8	(7)	7	(5)	3	(2)	64	(46)	82	(55)	1	(1)	-	-	-	-	-	-	178	(129)	
	Teign	-	-	-	-	-	1	(1)	1	(1)	2	(2)	3	(2)	20	(10)	37	(28)	17	(17)	-	-	-	-	-	-	-	81	(61)	
	Torridge	-	-	-	-	6	(6)	9	(9)	4	(4)	3	(2)	3	(3)	9	(9)	20	(14)	15	(15)	-	-	-	-	-	-	69	(62)	
	Yealm	-	-	-	-	-	-	-	-	-	-	-	-	-	-	-	1	(0)	2	(0)	5	(2)	1	(0)	-	-	9	(2)		
	<b>Total</b>		1	(1)	6	(6)	23	(23)	25	(25)	59	(56)	92	(67)	182	(110)	444	(266)	689	(451)	637	(455)	341	(250)	100	(68)	29	(17)	2628	(1795)

## Section 6

Table 9 (continued)

## Salmon Rod Catches (released totals in brackets) – 2010 Season

Environment Agency Region	River	Jan	Feb	Mar	Apr	May	Jun	Jul	Aug	Sep	Oct	Nov	Dec	Un-known	Total Number	
Midlands	Severn	-	-	9 (8)	13 (12)	31 (31)	53 (29)	38 (9)	52 (21)	32 (18)	6 (4)	-	-	-	234 (132)	
	Trent	-	-	-	-	-	-	-	-	-	1 (1)	-	-	-	1 (1)	
	<b>Total</b>	-	0 (0)	9 (8)	13 (12)	31 (31)	53 (29)	38 (9)	52 (21)	32 (18)	7 (5)	0 (0)	0 (0)	0 (0)	235 (133)	
Environment Agency Wales	Aeron	-	-	-	-	-	-	-	-	-	3 (2)	-	-	-	3 (2)	
	Afan	-	-	-	-	-	2 (2)	1 (1)	5 (2)	7 (3)	2 (2)	1 (1)	-	-	18 (11)	
	Artro	-	-	-	-	-	-	-	3 (0)	2 (1)	-	-	-	-	5 (1)	
	Cleddau (E&W)	1 (0)	-	-	1 (1)	1 (1)	2 (1)	9 (4)	12 (5)	24 (12)	24 (19)	-	-	1 (0)	75 (43)	
	Clwyd	-	-	1 (1)	1 (1)	-	-	9 (4)	29 (19)	115 (74)	71 (51)	-	-	2 (0)	228 (150)	
	Conwy	-	-	-	-	2 (2)	1 (1)	28 (11)	41 (15)	149 (81)	76 (40)	24 (24)	-	6 (0)	327 (174)	
	Dee	-	-	9 (9)	6 (6)	7 (7)	11 (8)	45 (17)	164 (84)	335 (175)	206 (123)	-	-	17 (13)	800 (442)	
	Dwyfawr	-	-	-	-	-	-	1 (0)	5 (2)	5 (1)	9 (3)	-	-	-	6 (5)	26 (11)
	Dwryd	-	-	-	-	-	-	2 (1)	1 (1)	1 (1)	-	-	-	-	-	4 (3)
	Dyfi/ Dovey	-	-	-	2 (2)	-	-	23 (4)	13 (6)	78 (22)	50 (18)	-	-	-	2 (2)	168 (54)
	Dysynni	-	-	-	-	-	2 (0)	2 (1)	-	-	-	-	-	-	-	4 (1)
	Glaslyn	-	-	-	-	-	1 (1)	8 (5)	3 (1)	2 (0)	3 (1)	-	-	-	5 (5)	22 (13)
	Gwyrfai	-	-	-	-	-	-	-	-	1 (0)	1 (0)	-	-	-	-	2 (0)
	Llyfni	-	-	-	-	-	-	3 (2)	-	3 (0)	-	-	-	-	-	6 (2)
	Loughor	-	-	-	-	2 (2)	3 (1)	8 (4)	17 (4)	20 (8)	10 (7)	-	-	-	-	60 (26)
	Mawddach	-	-	-	-	-	3 (2)	24 (11)	34 (19)	51 (37)	20 (13)	-	-	-	4 (4)	136 (86)
	Neath	-	-	-	1 (1)	-	-	6 (4)	28 (11)	18 (3)	21 (10)	-	-	-	2 (1)	76 (30)
	Nevern	-	-	-	-	1 (1)	-	6 (0)	8 (0)	18 (4)	5 (1)	-	-	-	5 (2)	43 (8)
	Ogmore	-	-	1 (1)	-	1 (1)	6 (1)	12 (5)	33 (20)	36 (26)	14 (13)	-	-	-	3 (0)	106 (67)
	Ogwen	-	-	-	-	-	1 (0)	12 (4)	21 (4)	50 (22)	27 (15)	-	-	-	-	111 (45)
	Rheidol	-	-	-	-	-	-	-	3 (0)	7 (4)	8 (4)	-	-	-	-	18 (8)
	Seiont	-	-	-	-	-	1 (1)	-	1 (1)	12 (0)	21 (1)	6 (6)	-	-	-	41 (9)
	Taf	1 (0)	-	-	1 (1)	-	3 (2)	14 (2)	57 (17)	111 (24)	27 (10)	-	-	-	9 (3)	223 (59)
	Taff	-	-	4 (4)	-	-	-	2 (1)	9 (6)	12 (8)	26 (23)	-	-	-	-	53 (42)
	Tawe	-	-	2 (2)	2 (2)	5 (5)	6 (4)	22 (9)	50 (25)	101 (30)	36 (22)	-	-	-	6 (6)	230 (105)
	Teifi	1 (0)	-	-	2 (2)	2 (2)	14 (10)	59 (11)	162 (52)	426 (203)	211 (99)	1 (0)	1 (1)	43 (11)	922 (391)	
	Tywi/ Towy	-	-	-	6 (5)	8 (5)	21 (10)	113 (41)	210 (75)	417 (192)	104 (71)	2 (0)	-	-	36 (23)	917 (422)
	Usk	-	-	3 (3)	1 (1)	7 (7)	38 (23)	44 (23)	108 (60)	256 (172)	121 (84)	-	-	-	2 (0)	580 (373)
	Wye (a)	-	-	-	17 (17)	15 (15)	21 (21)	50 (39)	28 (21)	43 (32)	75 (67)	98 (79)	-	-	1 (1)	348 (292)
	Ystwyth	-	-	-	-	-	-	1 (0)	1 (0)	1 (0)	5 (3)	3 (1)	-	-	-	11 (4)
	Others	-	-	-	-	-	-	-	1 (1)	1 (0)	3 (3)	5 (2)	-	-	-	10 (6)
	<b>Total</b>		3 (0)	0 (0)	37 (37)	38 (37)	57 (54)	166 (106)	483 (187)	1062 (461)	2340 (1176)	1202 (714)	34 (31)	1 (1)	150 (76)	5573 (2880)



## Section 6

Table 9(continued)

## Salmon Rod Catches (released totals in brackets) – 2010 Season

Environment Agency Region	River	Jan	Feb	Mar	Apr	May	Jun	Jul	Aug	Sep	Oct	Nov	Dec	Un-known	Total Number	
North West	Annas	-	-	-	-	-	-	-	-	1 (1)	1 (0)	3 (3)	-	-	-	5 (4)
	Bela	-	-	-	-	-	-	-	5 (2)	8 (6)	2 (1)	-	-	2 (0)	17 (9)	
	Calder	-	-	-	-	-	-	4 (1)	7 (2)	29 (16)	33 (19)	-	-	-	73 (38)	
	Crake	-	-	-	-	-	-	1 (1)	3 (3)	15 (13)	19 (17)	-	-	-	38 (34)	
	Derwent	1 (1)	4 (3)	1 (1)	2 (2)	3 (3)	3 (3)	38 (13)	117 (43)	535 (213)	523 (387)	-	-	21 (3)	1248 (672)	
	Duddon	-	-	-	-	-	-	1 (0)	9 (7)	36 (16)	27 (18)	-	-	-	73 (41)	
	Eden	-	-	13 (11)	22 (21)	29 (29)	38 (35)	46 (23)	100 (41)	213 (70)	611 (382)	354 (263)	-	-	5 (1)	1431 (876)
	Ehen	-	-	-	-	-	-	-	32 (13)	114 (24)	237 (92)	198 (119)	1 (0)	-	6 (3)	588 (251)
	Ellen	-	-	-	2 (2)	-	7 (7)	-	3 (2)	3 (1)	17 (10)	11 (7)	-	-	-	43 (29)
	Esk (Border)	-	-	-	2 (2)	4 (4)	2 (2)	15 (10)	72 (25)	196 (66)	416 (248)	513 (395)	-	-	10 (4)	1230 (756)
	Esk (Cumbrian)	-	-	-	-	-	-	-	2 (0)	4 (0)	15 (5)	4 (4)	-	-	-	25 (9)
	Irt	-	-	4 (4)	4 (4)	-	-	-	1 (0)	15 (6)	60 (29)	42 (29)	1 (1)	-	-	127 (73)
	Kent	1 (0)	-	-	-	-	-	3 (2)	46 (8)	125 (46)	299 (133)	200 (135)	-	-	18 (7)	692 (331)
	Leven	-	-	-	-	-	-	-	4 (4)	16 (16)	42 (39)	39 (36)	-	-	1 (0)	102 (95)
	Lune	-	-	-	-	2 (2)	-	3 (2)	31 (15)	104 (49)	458 (238)	510 (343)	9 (9)	-	8 (3)	1125 (661)
	Ribble	-	-	-	2 (2)	4 (4)	8 (7)	13 (10)	70 (39)	132 (87)	425 (309)	565 (443)	11 (9)	-	17 (13)	1247 (923)
	Wyre	-	-	-	-	-	-	-	-	1 (1)	2 (1)	7 (3)	-	-	-	10 (5)
	<b>Total</b>	<b>2 (1)</b>	<b>21 (18)</b>	<b>33 (32)</b>	<b>41 (41)</b>	<b>58 (54)</b>	<b>83 (50)</b>	<b>405 (162)</b>	<b>1064 (423)</b>	<b>3206 (1751)</b>	<b>3048 (2219)</b>	<b>25 (22)</b>	<b>0 (0)</b>	<b>88 (34)</b>	<b>8074 (4807)</b>	
England and Wales		<b>6 (2)</b>	<b>44 (41)</b>	<b>158 (152)</b>	<b>178 (176)</b>	<b>296 (283)</b>	<b>553 (351)</b>	<b>1542 (672)</b>	<b>3831 (1782)</b>	<b>8837 (4816)</b>	<b>8532 (5878)</b>	<b>415 (314)</b>	<b>101 (69)</b>	<b>333 (157)</b>	<b>(24826) (14691)</b>	
Notes: Reported data from rod licence catch returns only, except where indicated. Totals include all fish taken and all fish released. Released fish pre June as recorded on return forms.																
- Catches from tributaries and from minor rivers with a shared estuary are included under the appropriate main river.																
Key: (a) Figure quoted above is data from rod catch returns only. Catch data taken from a source other than rod licence returns, ie owners' returns, general licence returns etc. is not used in this table.																
Owners data for salmon reported the following: River Test 225, River Itchen 361, River Avon (Hants) 46.																

## Section 6

Table 10 Sea Trout Rod Catches (released totals in brackets) – 2010 Season

Environment Agency Region	River	Jan	Feb	Mar	Apr	May	Jun	Jul	Aug	Sep	Oct	Nov	Dec	Un-known	Total Number	
North East	Aln	-	-	-	-	-	3 (1)	10 (1)	14 (5)	33 (15)	20 (11)	-	-	-	80 (33)	
	Coquet	-	-	2 (2)	10 (9)	22 (18)	34 (26)	72 (39)	77 (50)	84 (54)	228 (146)	1 (0)	-	-	530 (344)	
	Ouse (Yorks.)	-	-	-	-	-	2 (2)	-	-	1 (0)	1 (0)	-	-	-	4 (2)	
	Esk (Yorks.)	-	-	-	9 (6)	13 (11)	116 (79)	71 (49)	120 (55)	173 (100)	253 (175)	-	-	-	12 (8)	767 (483)
	Tees	-	-	1 (1)	1 (1)	-	-	14 (14)	6 (5)	5 (3)	9 (8)	-	-	-	3 (3)	39 (35)
	Tyne	-	4 (4)	3 (3)	14 (13)	28 (25)	104 (66)	736 (329)	689 (358)	546 (329)	528 (358)	1 (0)	-	-	34 (13)	2687 (1498)
	Wear	-	-	1 (1)	4 (2)	62 (57)	202 (126)	404 (264)	450 (326)	416 (321)	313 (255)	3 (3)	-	-	56 (39)	1911 (1394)
	Other	-	-	-	-	1 (1)	-	-	-	-	2 (0)	-	-	-	-	3 (1)
<b>Total</b>		<b>0 (0)</b>	<b>4 (4)</b>	<b>7 (7)</b>	<b>38 (31)</b>	<b>126 (112)</b>	<b>461 (300)</b>	<b>1307 (696)</b>	<b>1356 (799)</b>	<b>1258 (822)</b>	<b>1354 (953)</b>	<b>5 (3)</b>	<b>0 (0)</b>	<b>105 (63)</b>	<b>6021 (3790)</b>	
Thames	Thames	-	-	-	-	-	1 (0)	1 (1)	-	-	-	-	-	-	2 (1)	
Anglian	All	-	-	-	2 (0)	1 (1)	1 (0)	-	-	-	-	-	-	-	4 (1)	
Southern	Adur	-	-	-	-	-	-	-	1 (0)	4 (3)	3 (2)	-	-	-	8 (5)	
	Arun	-	-	-	-	-	9 (6)	5 (3)	6 (5)	-	-	-	-	-	20 (14)	
	Beaulieu	-	-	-	-	-	7 (5)	21 (5)	8 (6)	2 (2)	-	-	-	-	38 (18)	
	Itchen	-	-	-	-	5 (4)	52 (44)	133 (117)	173 (156)	179 (161)	55 (42)	4 (4)	-	-	13 (11)	614 (539)
	Lymington	-	-	-	-	-	1 (1)	4 (3)	9 (8)	7 (5)	6 (4)	-	-	-	27 (21)	
	Ouse (Sussex)	-	-	-	-	1 (1)	8 (7)	14 (10)	4 (3)	24 (19)	9 (9)	-	-	-	60 (49)	
	Rother (Eastern)	-	-	-	-	-	3 (0)	-	-	3 (1)	-	-	-	-	6 (1)	
	Rother (Petworth)	-	-	-	-	-	1 (1)	4 (3)	7 (5)	5 (5)	1 (1)	-	-	-	18 (15)	
	Test	-	4 (4)	5 (4)	2 (2)	9 (7)	18 (12)	32 (20)	54 (38)	44 (28)	1 (1)	-	1 (1)	-	7 (7)	177 (124)
	Others	-	-	-	-	12 (12)	25 (25)	1 (1)	2 (1)	4 (4)	-	-	-	-	-	44 (43)
<b>Total</b>		<b>-</b>	<b>4 (4)</b>	<b>5 (4)</b>	<b>2 (2)</b>	<b>27 (24)</b>	<b>124 (101)</b>	<b>214 (162)</b>	<b>264 (222)</b>	<b>272 (228)</b>	<b>75 (59)</b>	<b>4 (4)</b>	<b>1 (1)</b>	<b>20 (18)</b>	<b>1012 (829)</b>	
Midlands	Avon (Devon)	-	-	-	-	11 (7)	15 (8)	37 (18)	30 (17)	26 (23)	2 (2)	10 (10)	-	-	131 (85)	
	Avon (Hants.)	-	3 (3)	2 (2)	4 (4)	11 (11)	41 (40)	64 (57)	136 (125)	185 (163)	92 (87)	-	-	-	538 (492)	
	Axe	-	-	-	7 (6)	51 (29)	74 (51)	64 (42)	85 (65)	84 (71)	51 (43)	-	-	-	417 (307)	
	Camel	-	-	-	-	9 (3)	135 (100)	367 (201)	239 (140)	52 (42)	29 (29)	23 (22)	13 (13)	36 (36)	903 (586)	
	Dart	-	-	-	23 (7)	89 (48)	48 (15)	100 (58)	161 (102)	98 (81)	-	-	-	-	519 (311)	
	Erne	-	-	-	1 (0)	-	4 (0)	25 (18)	17 (11)	21 (15)	13 (12)	3 (0)	-	-	1 (1)	85 (57)
	Exe	-	-	-	-	1 (0)	-	7 (0)	7 (4)	9 (3)	-	-	-	-	24 (7)	
	Fowey	-	-	-	24 (10)	51 (26)	155 (83)	441 (267)	319 (227)	136 (132)	14 (14)	28 (28)	3 (3)	3 (2)	1174 (792)	
	Frome	-	-	1 (1)	3 (3)	23 (11)	36 (25)	61 (51)	51 (35)	59 (43)	-	-	-	-	234 (169)	
	Looe	-	-	-	-	-	3 (0)	40 (35)	46 (35)	42 (36)	-	-	-	-	131 (106)	
	Lyn	-	-	-	-	-	6 (5)	12 (9)	20 (19)	1 (1)	2 (1)	-	-	-	41 (35)	
	Lynher	-	-	-	6 (5)	17 (13)	29 (19)	104 (68)	129 (90)	49 (28)	4 (4)	-	-	-	338 (227)	
	Otter	-	-	-	2 (2)	21 (19)	18 (13)	21 (13)	19 (15)	6 (3)	4 (1)	-	-	-	91 (66)	
	Piddle	-	-	1 (1)	-	5 (5)	5 (5)	-	4 (0)	-	1 (1)	-	-	-	16 (12)	
	Plym	-	-	6 (1)	24 (12)	36 (18)	30 (17)	65 (44)	66 (36)	13 (12)	-	1 (1)	-	-	241 (141)	
	Stour (SW)	-	-	-	-	-	3 (3)	2 (2)	1 (1)	5 (5)	6 (6)	-	-	-	17 (17)	
	Tamar	-	-	-	14 (11)	21 (15)	60 (43)	157 (102)	165 (115)	104 (76)	59 (55)	-	-	-	580 (417)	
	Tavy	-	-	1 (0)	4 (2)	44 (22)	65 (37)	191 (138)	217 (155)	97 (81)	23 (22)	-	-	-	642 (457)	
	Taw	-	-	2 (2)	10 (6)	34 (21)	67 (47)	81 (47)	99 (74)	100 (67)	1 (1)	-	-	-	395 (265)	
	Teign	-	-	19 (1)	46 (8)	114 (31)	103 (52)	147 (76)	221 (132)	142 (89)	9 (9)	-	-	-	801 (398)	
Torridge	-	-	1 (1)	14 (12)	16 (12)	24 (20)	37 (26)	33 (25)	28 (22)	9 (8)	-	-	-	10 (10)	172 (136)	
Yealm	-	-	-	-	-	-	12 (3)	31 (19)	11 (2)	-	-	9 (9)	-	63 (33)		
Others	-	-	-	-	1 (1)	1 (0)	4 (3)	10 (7)	5 (5)	4 (4)	-	-	-	25 (20)		
<b>Total</b>		<b>-</b>	<b>3 (3)</b>	<b>33 (9)</b>	<b>179 (85)</b>	<b>535 (284)</b>	<b>909 (569)</b>	<b>2014 (1252)</b>	<b>2116 (1465)</b>	<b>1265 (992)</b>	<b>382 (342)</b>	<b>74 (70)</b>	<b>16 (16)</b>	<b>52 (49)</b>	<b>7578 (5136)</b>	
Midlands	Severn	-	-	-	-	1 (1)	-	9 (5)	7 (7)	1 (1)	2 (2)	-	-	-	20 (16)	
	Vyrynwy	-	-	2 (2)	-	-	1 (1)	-	-	-	-	-	-	-	3 (3)	
	<b>Total</b>		<b>0 (0)</b>	<b>2 (2)</b>	<b>0 (0)</b>	<b>1 (1)</b>	<b>1 (1)</b>	<b>1 (1)</b>	<b>9 (5)</b>	<b>7 (7)</b>	<b>1 (1)</b>	<b>2 (2)</b>	<b>-</b>	<b>-</b>	<b>23 (19)</b>	

## Section 6

Table 10 (continued) Sea Trout Rod Catches (released totals in brackets) – 2010 Season

Environment Agency Region	River	Jan	Feb	Mar	Apr	May	Jun	Jul	Aug	Sep	Oct	Nov	Dec	Un-known	Total Number
Environment Agency Wales	Aeron	-	-	-	-	1 (0)	10 (4)	52 (20)	19 (9)	37 (9)	7 (1)	-	-	-	126 (43)
	Afan	-	-	-	2 (2)	4 (4)	29 (25)	15 (10)	33 (26)	21 (21)	8 (8)	-	-	-	112 (96)
	Artro	-	-	-	-	-	-	10 (5)	12 (6)	6 (0)	-	-	-	-	28 (11)
	Cledau (E&W)	-	-	-	3 (2)	4 (2)	125 (78)	236 (138)	112 (75)	65 (47)	10 (9)	-	-	9 (7)	564 (358)
	Clwyd	-	-	-	2 (2)	18 (16)	107 (96)	420 (350)	566 (495)	322 (274)	51 (50)	-	-	12 (12)	1498 (1295)
	Conwy	-	-	-	-	1 (1)	24 (19)	208 (144)	103 (83)	119 (92)	25 (19)	2 (2)	-	16 (16)	498 (376)
	Dee	-	-	-	1 (1)	4 (4)	38 (24)	157 (132)	142 (112)	108 (83)	40 (38)	-	-	3 (2)	493 (396)
	Dwyfach	-	-	-	-	-	6 (1)	29 (25)	38 (22)	58 (39)	5 (4)	-	-	14 (10)	150 (101)
	Dwyfawr	-	-	-	1 (1)	6 (5)	22 (17)	101 (62)	167 (102)	83 (59)	23 (19)	-	-	154 (119)	557 (384)
	Dwyrhyd	-	-	-	-	-	-	1 (0)	8 (4)	14 (9)	3 (2)	-	-	-	26 (15)
	Dyfi / Dovey	-	-	2 (1)	14 (14)	37 (28)	129 (69)	684 (418)	704 (588)	351 (297)	133 (126)	-	-	39 (31)	2093 (1572)
	Dysynni	6 (6)	-	31 (30)	35 (27)	39 (36)	41 (38)	67 (44)	97 (76)	63 (61)	17 (17)	-	-	-	396 (335)
	Glaslyn	-	-	34 (20)	127 (69)	130 (89)	67 (31)	89 (50)	161 (106)	141 (97)	24 (19)	-	-	53 (13)	826 (494)
	Gwendraeth Fach	-	-	-	-	-	8 (3)	9 (6)	19 (17)	5 (3)	6 (4)	-	-	-	47 (33)
	Gwendraeth Fawr	-	-	-	-	-	-	3 (3)	6 (6)	4 (4)	2 (1)	-	-	-	15 (14)
	Gwyrfai	-	-	-	-	-	-	1 (0)	-	2 (0)	2 (2)	-	-	-	5 (2)
	Llyfni	-	-	-	-	-	9 (0)	54 (19)	42 (24)	16 (2)	3 (1)	-	-	10 (0)	134 (46)
	Loughor	-	-	-	6 (5)	11 (1)	61 (34)	93 (48)	52 (24)	18 (15)	6 (6)	-	-	-	247 (133)
	Mawddach	-	-	-	28 (28)	4 (2)	82 (65)	208 (176)	248 (219)	81 (72)	16 (16)	-	-	37 (32)	704 (610)
	Neath	-	-	3 (3)	6 (6)	17 (17)	53 (45)	122 (95)	142 (121)	119 (93)	22 (18)	-	-	9 (9)	493 (407)
	Nevern	-	-	-	1 (0)	29 (11)	163 (44)	217 (70)	161 (87)	63 (25)	12 (4)	-	-	109 (12)	755 (253)
	Ogmore	-	-	-	4 (4)	19 (17)	39 (37)	53 (43)	65 (51)	36 (30)	3 (3)	-	-	13 (0)	232 (185)
	Ogwen	-	-	-	-	10 (6)	16 (10)	85 (58)	97 (62)	52 (28)	10 (7)	-	-	17 (17)	287 (188)
	Rheidol	-	-	-	1 (0)	1 (0)	23 (16)	63 (22)	78 (45)	21 (10)	10 (7)	-	-	-	197 (100)
	Rhymney	3 (2)	1 (0)	-	-	-	9 (8)	4 (4)	1 (1)	1 (1)	1 (1)	-	-	-	20 (17)
	Seiont	-	-	-	-	6 (6)	7 (6)	10 (9)	33 (18)	4 (2)	5 (0)	-	-	6 (6)	71 (47)
	Taf	-	-	-	1 (0)	29 (9)	28 (17)	85 (41)	68 (24)	51 (12)	16 (10)	-	-	17 (10)	295 (123)
	Taff	-	-	-	1 (1)	5 (5)	5 (5)	17 (17)	14 (11)	10 (8)	2 (2)	-	-	-	54 (49)
	Tawe	-	-	4 (2)	23 (22)	58 (48)	52 (46)	111 (78)	93 (72)	73 (61)	9 (6)	-	-	3 (2)	426 (337)
	Teifi	1 (0)	-	-	50 (37)	109 (75)	280 (165)	699 (456)	513 (352)	359 (288)	77 (68)	-	1 (0)	97 (71)	2186 (1512)
	Tywi / Towy	-	1 (0)	-	69 (26)	195 (138)	464 (280)	1004 (593)	566 (357)	335 (228)	61 (50)	-	-	75 (39)	2770 (1711)
	Usk	-	-	-	4 (4)	8 (7)	11 (10)	31 (23)	18 (8)	32 (20)	14 (11)	-	-	1 (0)	119 (83)
	Wye	-	1 (1)	2 (2)	-	5 (4)	3 (3)	6 (1)	3 (2)	5 (4)	-	-	-	-	25 (17)
	Ystwyth	-	-	-	-	-	20 (9)	63 (53)	59 (41)	37 (26)	6 (4)	-	-	-	185 (133)
	Others	-	-	-	-	-	1 (0)	11 (7)	9 (7)	7 (7)	-	6 (4)	-	6 (4)	40 (29)
	<b>Total</b>	<b>10 (8)</b>	<b>3 (1)</b>	<b>76 (58)</b>	<b>379 (251)</b>	<b>750 (531)</b>	<b>1932 (1205)</b>	<b>5018 (3220)</b>	<b>4449 (3253)</b>	<b>2719 (2027)</b>	<b>629 (533)</b>	<b>8 (6)</b>	<b>1 (0)</b>	<b>700 (412)</b>	<b>16674 (11505)</b>

## Section 6

Table 10 (continued)

## Sea Trout Rod Catches (released totals in brackets) – 2010 Season

Environment Agency Region	River	Jan	Feb	Mar	Apr	May	Jun	Jul	Aug	Sep	Oct	Nov	Dec	Un-known	Total Number														
	Calder	-	-	-	-	-	-	2	(1)	3	(3)	17	(15)	3	(3)	-	-	25	(22)										
	Crake	-	-	-	-	-	-	5	(5)	4	(3)	7	(6)	-	-	-	-	36	(29)										
	Derwent	-	1	(1)	2	(2)	8	(8)	30	(28)	41	(37)	60	(52)	69	(63)	77	(61)	29	(27)	-	-	317	(279)					
	Duddon	-	-	-	-	-	-	6	(3)	45	(32)	83	(66)	49	(31)	5	(4)	-	-	-	-	-	-	188	(136)				
	Eden (NW)	-	-	-	-	9	(8)	38	(35)	127	(90)	72	(32)	114	(82)	86	(74)	15	(13)	-	-	-	-	461	(334)				
	Ehen	-	-	-	-	-	-	3	(3)	22	(19)	87	(72)	129	(113)	71	(57)	10	(10)	-	-	-	-	3	(2)	325	(276)		
	Ellen	-	-	-	1	(1)	-	-	17	(15)	10	(7)	8	(6)	38	(28)	20	(10)	14	(14)	-	-	-	-	-	-	108	(81)	
	Esk (Border)	-	-	-	-	-	-	58	(42)	158	(93)	299	(154)	154	(90)	97	(53)	98	(86)	-	-	-	-	41	(33)	905	(551)		
	Esk (Cumbrian)	-	-	-	-	-	-	-	-	15	(14)	55	(39)	92	(61)	28	(28)	4	(1)	-	-	-	-	-	-	-	194	(143)	
	Irt	-	-	-	-	-	-	-	-	7	(6)	48	(38)	34	(28)	60	(45)	36	(33)	-	-	-	-	-	-	-	185	(150)	
	Keer	-	-	-	-	-	-	-	-	-	-	-	-	6	(6)	-	-	-	-	-	-	-	-	-	-	-	6	(6)	
	Kent	-	-	-	-	16	(15)	95	(90)	91	(84)	147	(98)	237	(176)	108	(88)	33	(29)	-	-	-	-	4	(0)	731	(580)		
	Leven	-	-	-	-	4	(0)	-	-	7	(2)	10	(8)	15	(8)	9	(1)	3	(3)	-	-	-	-	1	(1)	49	(23)		
	Lune	-	-	-	-	4	(4)	17	(11)	105	(88)	296	(187)	275	(211)	213	(153)	87	(77)	-	-	-	-	12	(1)	1009	(732)		
	Ribble	-	1	(1)	-	-	11	(11)	51	(50)	127	(93)	554	(444)	400	(314)	281	(238)	101	(94)	-	-	-	-	58	(53)	1584	(1298)	
	Wyre (NW)	-	-	-	-	-	-	11	(11)	3	(3)	11	(10)	12	(10)	15	(13)	6	(6)	-	-	-	-	1	(0)	59	(53)		
	Others	-	-	-	-	-	-	4	(4)	8	(7)	9	(0)	5	(5)	21	(20)	-	-	-	-	-	-	-	-	-	47	(36)	
	<b>Total</b>	<b>0</b>	<b>(0)</b>	<b>2</b>	<b>(2)</b>	<b>3</b>	<b>(3)</b>	<b>52</b>	<b>(46)</b>	<b>324</b>	<b>(289)</b>	<b>747</b>	<b>(561)</b>	<b>1708</b>	<b>(1178)</b>	<b>1670</b>	<b>(1267)</b>	<b>1159</b>	<b>(893)</b>	<b>444</b>	<b>(400)</b>	<b>0</b>	<b>(0)</b>	<b>0</b>	<b>(0)</b>	<b>120</b>	<b>(90)</b>	<b>6229</b>	<b>(4729)</b>
	<b>England and Wales</b>	<b>10</b>	<b>(8)</b>	<b>16</b>	<b>(14)</b>	<b>126</b>	<b>(83)</b>	<b>652</b>	<b>(415)</b>	<b>1764</b>	<b>(1242)</b>	<b>4176</b>	<b>(2737)</b>	<b>10271</b>	<b>(6514)</b>	<b>9862</b>	<b>(7013)</b>	<b>6674</b>	<b>(4963)</b>	<b>2886</b>	<b>(2289)</b>	<b>91</b>	<b>(83)</b>	<b>18</b>	<b>(17)</b>	<b>997</b>	<b>(632)</b>	<b>37543</b>	<b>26010</b>
Notes:	Reported data from rod licence catch returns only. Totals Includes all fish taken and all fish released. Catches from tributaries and from minor rivers with a shared estuary are included under the appropriate main river. The catch from remaining rivers in each region is aggregated and recorded under 'others'.																												

## Section 6

Table 11 Rod Caught Salmon &amp; Sea Trout, Average Weight (Kg)- 2010 season

Environment Agency Region	River	Salmon			Sea trout		
		Total catch	Total est. wt. (kg)	Ave. wt. (kg)	Total catch	Total est. wt. (kg)	Ave. wt. (kg)
North East	Coquet	978	2837	2.90	530	900	1.70
	Esk (Yorks.)	172	560	3.26	767	1063	1.39
	Tees	69	278	4.03	39	43	1.10
	Tyne	5115	21975	4.30	2687	4599	1.71
	Wear	1531	5830	3.81	1911	3309	1.73
Southern	Itchen	252	779	3.09	614	629	1.02
	Test	110	356	3.23	177	232	1.31
South West	Avon (Devon)	61	169	2.77	131	103	0.78
	Avon (Hants.)	47	275	5.86	538	312	0.58
	Axe	8	16	2.00	417	496	1.19
	Camel	546	1694	3.10	903	442	0.49
	Dart	90	260	2.89	519	540	1.04
	Exe	404	1129	2.79	24	24	1.00
	Fowey	305	925	3.03	1174	689	0.59
	Frome	43	140	3.25	234	179	0.77
	Lyn	111	280	2.53	41	32	0.78
	Lynher	135	380	2.82	338	204	0.60
	Tamar	387	1139	2.94	580	361	0.62
	Tavy	128	374	2.92	642	452	0.70
	Taw	178	572	3.21	395	320	0.81
	Teign	81	233	2.87	801	662	0.83
	Torridge	69	234	3.39	172	133	0.77
Midlands	Severn	234	1041	4.45	23	20	0.86
Environment Agency Wales	Aeron	3	12	3.89	126	61	0.48
	Clwyd	228	646	2.83	1498	841	0.56
	Conwy	327	1035	3.16	498	349	0.70
	Dee	800	2846	3.56	493	320	0.65
	Dyfi/Dovey	168	489	2.91	2093	1803	0.86
	E+W.Cleddau	75	198	2.64	564	362	0.64
	Glaslyn	22	65	2.93	826	482	0.58
	Mawddach	136	428	3.15	704	488	0.69
	Nevern	43	128	2.97	755	460	0.61
	Ogmore	106	317	2.99	232	220	0.95
	Ogwen	111	312	2.81	287	189	0.66
	Rheidol	18	53	2.95	197	152	0.77
	Taf	223	660	2.96	295	302	1.02
	Taff	53	149	2.80	54	28	0.51
	Tawe	230	718	3.12	426	338	0.79
	Teifi	922	2988	3.24	2186	1466	0.67
	Tywi/Towy	917	2977	3.25	2770	3078	1.11
Usk	580	2002	3.45	119	118	0.99	
Wye	348	1561	4.48	25	25	0.99	
North West	Derwent	1248	4392	3.52	317	285	0.90
	Eden	1431	5111	3.57	461	353	0.77
	Ehen	588	1705	2.90	325	218	0.67
	Ellen	43	145	3.37	108	59	0.55
	Esk (Border)	1230	4499	3.66	905	677	0.75
	Esk (Cumbriar)	25	69	2.76	194	97	0.50
	Kent	692	2077	3.00	731	494	0.68
	Lune	1125	3925	3.49	1009	841	0.83
Ribble	1247	4834	3.88	1584	1107	0.70	
Notes:	<p>Only those fish with associated weights are included  All data taken from rod licence returns including rivers Test, Itchen and Wye  Total Weights calculated to nearest whole kg  Catches from tributaries and from minor rivers with a shared estuary are included under the appropriate main river.</p>						

## Section 6

Table 12 Number of rod caught salmon in weight categories (lb &amp; kg) - 2010

Environment Agency Region	River	0-8 lb (0-3.6 kg)	8-14 lb (3.6-6.4 kg)	14-22 lb (6.4-10 kg)	>22 lb (>10 kg)
North East	Coquet	779	187	12	0
	Esk (Yorks.)	114	49	8	1
	Tees	32	30	7	0
	Tyne	2303	2161	624	27
	Wear	870	553	105	3
	Others	56	21	5	0
Southern	Itchen	213	34	5	0
	Test	89	19	2	0
	Others	0	2	1	0
South West	Avon (Devon)	53	7	1	0
	Avon (Hants.)	9	25	9	4
	Axe	8	0	0	0
	Camel	429	110	6	1
	Dart	75	15	0	0
	Exe	340	62	2	0
	Fowey	241	60	4	0
	Frome	34	7	1	1
	Lyn	97	13	1	0
	Lynher	120	15	0	0
	Tamar	321	64	2	0
	Tavy	110	17	1	0
	Taw	124	52	2	0
	Teign	68	13	0	0
	Torridge	44	25	0	0
Others	27	8	0	0	
Midlands	Severn	103	101	28	2
	Others	1	0	0	0
Environment Agency Wales	Aeron	0	3	0	0
	Clwyd	195	31	2	0
	Conwy	244	74	9	0
	Dee	525	236	36	3
	Dyfi	140	27	1	0
	E+W.Cleddau	70	4	1	0
	Glaslyn	17	5	0	0
	Mawddach	100	36	0	0
	Nevern	37	6	0	0
	Ogmore	84	18	4	0
	Ogwen	94	15	2	0
	Rheidol	15	2	1	0
	Taf	180	43	0	0
	Taff	44	9	0	0
	Tawe	170	55	5	0
	Teifi	673	221	20	0
	Tywi	658	227	32	0
Usk	396	159	23	2	
Wye	152	142	48	6	
Others	206	53	4	0	
North West	Derwent	869	314	64	1
	Eden	921	432	77	1
	Ehen	492	91	5	0
	Ellen	29	12	2	0
	Esk (Border)	780	372	77	1
	Esk (Cumbrian)	23	2	0	0
	Kent	549	124	19	0
	Lune	765	291	67	2
	Ribble	719	437	86	5
	Others	368	69	7	1
Notes:	Only those fish with associated weights are included All data taken from rod licence returns Catches from tributaries and from minor rivers with a shared estuary are included under the appropriate main river.				

## Section 6

Table 13 Number of rod caught sea trout in weight categories (lb &amp; kg)- 2010

Environment Agency Region	River	0-1 lb (0-0.45 kg)	1-4 lb (0.45-1.8 kg)	>4 lb (>1.8 kg)
North East	Coquet	121	200	209
	Esk (Yorks.)	193	399	175
	Tees	22	10	7
	Tyne	392	1433	862
	Wear	369	830	685
	Others	210	435	209
Southern	Beaulieu	9	24	5
	Itchen	308	216	90
	Lymington	14	12	1
	Ouse (Sussex)	12	17	31
	Test	38	104	35
	Others	30	39	27
South West	Avon (Devon)	51	73	7
	Avon (Hants.)	399	128	11
	Axe	126	214	77
	Camel	738	157	8
	Dart	180	282	57
	Exe	13	6	5
	Fowey	851	298	25
	Frome	133	86	15
	Lyn	27	12	2
	Lynher	239	90	9
	Tamar	372	196	12
	Tavy	338	281	23
	Taw	228	135	32
	Teign	342	422	37
	Torridge	99	63	10
Others	394	234	41	
Midlands	Severn	19	0	4
	Others	0	0	0
Environment Agency Wales	Aeron	103	22	1
	Clwyd	1153	307	38
	Conwy	306	167	25
	Dee	292	191	10
	Dyfi	1292	606	195
	E+W.Cleddau	365	173	26
	Glaslyn	567	245	14
	Mawddach	515	150	39
	Nevern	424	316	15
	Ogmore	117	88	27
	Ogwen	204	70	13
	Rheidol	111	73	13
	Taf	132	117	46
	Taff	44	9	1
	Tawe	298	84	44
	Teifi	1456	630	100
	Tywi	1232	1056	482
Usk	54	57	8	
Wye	14	7	4	
Others	1691	681	154	
North West	Derwent	186	93	38
	Eden	259	183	19
	Ehen	235	76	14
	Ellen	85	20	3
	Esk (Border)	459	418	28
	Esk (Cumbrian)	148	45	1
	Kent	495	203	33
	Lune	497	452	60
	Ribble	972	555	56
Others	427	147	21	
Notes:	Only those fish with associated weights are included All data taken from rod licence returns. Catches from tributaries and from minor rivers with a shared estuary are included under the appropriate main river.			

**Section 6**  
**Table 14**

**Summary of salmon net catches, 2000- 2010**

Environment Agency Region	River/ Fishery	Fishing Method	2000	2001	2002	2003	2004	2005	2006	2007	2008	2009	2010		
North East Northumbria	Coastal (N)	Drift nets	27093	21805	18490	5134	5323	5243	3887	4423	3111	2294	11,544		
		T nets	2789	3264	2811	4480	4461	3129	3250	1839	2154	2605	7,462		
	Coastal (S)	Drift nets	9679	8240	7174	0	0	0	0	0	0	0	0		
		T nets	74	80	0	47	32	16	23	106	84	34	49		
	North East Yorkshire	Coastal	Drift nets	3287	2329	2021	377	598	364	153	471	538	296	670	
T or J nets			432	397	484	397	603	235	253	252	354	166	257		
Whole area		<b>Total</b>	<b>43354</b>	<b>36115</b>	<b>30980</b>	<b>10435</b>	<b>11017</b>	<b>8987</b>	<b>7566</b>	<b>7091</b>	<b>6241</b>	<b>5395</b>	<b>19982</b>		
Anglian	Coastal	Drift nets	0	0	112	20	53	12	10	4	9	3	1		
		Other nets (var.)	0	0	0	4	0	3	5	3	0	0	0		
	Whole area	<b>Total</b>	<b>0</b>	<b>0</b>	<b>112</b>	<b>24</b>	<b>53</b>	<b>15</b>	<b>15</b>	<b>7</b>	<b>9</b>	<b>3</b>	<b>1</b>		
Southern	Hants area	Seine nets	0	0	0	0	0	0	0	0	0	0	0		
		Itchen	0	0	0	0	0	0	0	0	0	0	0		
	Whole area	<b>Total</b>	<b>0</b>	<b>0</b>	<b>0</b>	<b>0</b>	<b>0</b>	<b>0</b>	<b>0</b>	<b>0</b>	<b>0</b>	<b>0</b>	<b>0</b>		
South West	Avon + Stour	Seine nets	153	131	204	66	108	56	57	55	268	58	41		
		Poole Harbour	0	8	19	18	5	6	8	2	8	4	2		
		Parrett	0	0	0	0	0	0	0	0	0	0	0		
		Dip nets	0	0	0	0	0	0	0	0	0	0	0		
		Putcher ranks	0	0	0	0	0	0	0	0	0	0	0		
	Exe	Seine nets	474	200	514	277	414	287	189	102	137	92	121		
		Teign	101	95	221	265	250	84	111	18	103	66	119		
		Dart	168	169	113	197	296	63	47	15	54	42	69		
		Avon	0	0	0	0	0	0	0	0	0	0	0		
		Camel	210	158	70	83	14	7	0	0	0	6	15		
		Tavy	11	20	5	13	0	0	0	0	0	0	0		
		Tamar	287	176	137	219	0	0	0	0	0	0	0		
		Tavy/Tamar (b)	Seine net												
		Lynher	Seine nets	2	11	11	29	0	0	0	0	0	0	0	
		Fowey	Seine nets	13	7	7	1	3	4	0	0	0	0	0	
		Taw/Torridge	Seine nets	752	819	103	276	205	65	65	19	17	17	139	
		Lyn	Fixed Engine	0	0	0	0	0	0	0	0	0	0	0	
		Whole area	<b>Total</b>	<b>2171</b>	<b>1794</b>	<b>1404</b>	<b>1444</b>	<b>1295</b>	<b>572</b>	<b>477</b>	<b>211</b>	<b>587</b>	<b>285</b>	<b>506</b>	
		Midlands	Severn	Seine nets	41	5	20	38	43	25	13	0	0	2	0
				Lave nets	228	186	116	295	380	135	138	68	100	115	110
Fixed Engines (a)				704	836	1054	1207	346	778	713	608	771	766	128	
Whole area			<b>Total (a)</b>	<b>973</b>	<b>1027</b>	<b>1190</b>	<b>1540</b>	<b>769</b>	<b>938</b>	<b>864</b>	<b>676</b>	<b>871</b>	<b>883</b>	<b>238</b>	
Environment Agency Wales		Wye	Lave nets	11	2	6	6	8	7	6	6	4	6	7	
			Drift nets	0	0	0	0	0	0	0	0	0	0	0	
			Putcher rank	0	0	0	0	0	0	0	0	0	0	0	
	<b>River total</b>		<b>0</b>	<b>0</b>	<b>0</b>	<b>0</b>	<b>0</b>	<b>0</b>	<b>0</b>	<b>0</b>	<b>0</b>	<b>0</b>	<b>0</b>		
	Tywi	Seine nets	25	16	45	32	71	26	20	16	16	8	20		
		Coracle nets	29	46	63	41	35	20	25	16	29	40	40		
		<b>River total</b>	<b>54</b>	<b>62</b>	<b>108</b>	<b>73</b>	<b>106</b>	<b>46</b>	<b>45</b>	<b>32</b>	<b>45</b>	<b>48</b>	<b>60</b>		
		Taf	Seine net	1	0	0	0	0	0	0	0	0	0	0	
	S.W.Coastal	Coracle net	4	0	0	0	1	1	0	0	0	0	0		
		<b>River total</b>	<b>5</b>	<b>0</b>	<b>0</b>	<b>0</b>	<b>1</b>	<b>1</b>	<b>0</b>	<b>0</b>	<b>0</b>	<b>0</b>	<b>0</b>		
		Seine nets	0	0	0	0	0	0	0	0	0	0	0		
		<b>River total</b>	<b>0</b>	<b>0</b>	<b>0</b>	<b>0</b>	<b>0</b>	<b>0</b>	<b>0</b>	<b>0</b>	<b>0</b>	<b>0</b>	<b>0</b>		
	E+W.Cleddau	Compass nets	90	60	28	27	25	9	11	8	3	1	13		
		NeVERN	0	0	0	0	0	0	0	0	0	0	0		
		Teifi	Seine nets	79	0	17	4	1	103	85	1	41	13	56	
		<b>River total</b>	<b>85</b>	<b>60</b>	<b>82</b>	<b>88</b>	<b>51</b>	<b>85</b>	<b>45</b>	<b>15</b>	<b>24</b>	<b>17</b>	<b>78</b>		
	Dyfi	Seine nets	164	60	99	92	52	188	130	16	65	31	134		
		Dysynni	Seine net	19	21	75	1	0	8	0	2	0	0	2	
		Mawddach	Seine net	0	24	2	15	5	5	0	0	0	0	0	
		Glaslyn	Seine nets	0	1	1	0	0	1	2	0	0	0	0	
	Dwyfawr	Seine nets	3	0	6	0	0	0	0	0	0	0	0		
		N. Caernarfon	Seine nets	0	0	0	0	0	0	0	0	0	0		
		Seiont/Gwyrfa	Seine nets	0	0	0	0	0	0	0	0	0	0		
		Ogwen	Seine nets	85	0	0	0	0	0	0	0	0	0		
	Conwy	Basket trap	10	4	0	0	0	0	0	0	0	0	0		
		Seine nets	20	13	0	37	28	46	18	11	0	8	7		
		<b>River total</b>	<b>30</b>	<b>17</b>	<b>0</b>	<b>0</b>	<b>28</b>	<b>46</b>	<b>18</b>	<b>11</b>	<b>0</b>	<b>8</b>	<b>7</b>		
		Clwyd	Sling nets	0	0	0	0	0	0	0	0	0	0	0	
	Dee	Trammel nets	356	500	529	365	331	303	291	471	0	0	0		
		Seine nets	187	250	421	359	414	507	176	67	43	0	0		
		<b>River total</b>	<b>543</b>	<b>750</b>	<b>950</b>	<b>724</b>	<b>745</b>	<b>810</b>	<b>467</b>	<b>538</b>	<b>43</b>	<b>0</b>	<b>0</b>		
		Whole area	<b>Total</b>	<b>1004</b>	<b>997</b>	<b>1275</b>	<b>975</b>	<b>970</b>	<b>1121</b>	<b>679</b>	<b>613</b>	<b>160</b>	<b>93</b>	<b>223</b>	
	North West	Ribble	Drift nets	176	130	228	155	295	250	119	266	64	165	95	
			Lune	Haaf nets	455	336	271	369	185	662	418	256	86	117	243
			Drift nets	1072	743	1204	400	473	1350	686	486	238	129	211	
			Seine net	0	42	56	41	31	59	40	18	17	0	0	
		Kent	<b>River total</b>	<b>1527</b>	<b>1121</b>	<b>1531</b>	<b>810</b>	<b>689</b>	<b>2071</b>	<b>1144</b>	<b>760</b>	<b>341</b>	<b>411</b>	<b>454</b>	
			Lave nets	79	159	32	40	8	90	63	4	0	25	26	
			Lave nets	37	7	5	3	5	15	19	4	1	3	2	
			Duddon	Seine net	*	*	*	*	*	*	*	*	*	*	
S&W Cumbria area		Drift nets + var. nets	157	232	325	98	0	0	0	0	0	0	0		
		Eden + Esk area	Haaf nets + var. nets	1520	1661	1197	1695	1480	2752	2632	1290	575	407	1088	
		Whole area	<b>Total</b>	<b>3496</b>	<b>3310</b>	<b>3318</b>	<b>2801</b>	<b>2477</b>	<b>5178</b>	<b>3977</b>	<b>2324</b>	<b>981</b>	<b>846</b>	<b>1665</b>	
		England and Wales	<b>Total</b>	<b>50998</b>	<b>43243</b>	<b>38279</b>	<b>17219</b>	<b>16581</b>	<b>16811</b>	<b>13578</b>	<b>10922</b>	<b>8849</b>	<b>7505</b>	<b>22615</b>	

(a) 1993 Midlands fixed engine, Midlands total and total England/Wales net catch amended from earlier reports

N = North

(b) Catches included under Tavy and Tamar as appropriate

S = South



Section 6  
Table 15

Summary of sea trout net catches, 2000-2010

Environment Agency Region	River/ Fishery	Fishing Method	2000	2001	2002	2003	2004	2005	2006	2007	2008	2009	2010	
North East Northumbria	Coastal (N)	Drift nets	10400	9279	7489	2433	2041	1880	2731	2545	2578	2828	9710	
		T nets	10894	10666	8287	10396	8462	7373	9899	6026	9800	11579	29436	
	Coastal (S)	Drift nets	6370	5565	5350	0	0	0	0	0	0	0	0	
		T nets	823	774	0	123	33	49	92	127	241	159	323	
North East Yorkshire	Coastal	Drift nets	2651	2907	2403	278	339	294	258	545	996	662	961	
		T or J nets	8249	6741	6921	8541	8867	9177	9512	8323	11250	11729	15116	
		<b>Whole area Total</b>	<b>39387</b>	<b>35932</b>	<b>30450</b>	<b>21771</b>	<b>19742</b>	<b>18773</b>	<b>22492</b>	<b>17566</b>	<b>24865</b>	<b>26957</b>	<b>55546</b>	
Anglian	Coastal	Drift nets	1497	2195	917	2021	1772	862	708	651	509	550	415	
		Other nets (var.)	186	212	372	455	281	252	205	201	205	138	56	
	<b>Whole area Total</b>	<b>1683</b>	<b>2407</b>	<b>1289</b>	<b>2476</b>	<b>2053</b>	<b>1114</b>	<b>913</b>	<b>852</b>	<b>714</b>	<b>688</b>	<b>471</b>		
Southern	Hants area	Seine nets	1	24	24	14	7	2	0	2	0	0	1	
		Itchen	0	0	0	0	0	0	0	0	0	0	0	
	<b>Whole area Total</b>	<b>1</b>	<b>24</b>	<b>24</b>	<b>14</b>	<b>7</b>	<b>2</b>	<b>0</b>	<b>2</b>	<b>0</b>	<b>0</b>	<b>0</b>	<b>1</b>	
South West	Avon + Stour	Seine nets	781	450	1169	449	646	177	242	337	268	257	213	
		Seine net	0	7	5	17	7	15	13	8	8	8	0	
	Poole Harbour	Parrett	Dip nets	0	0	0	0	0	0	0	0	0	0	0
			Putcher ranks	0	0	0	0	0	0	0	0	0	0	0
			River total	0	0	0	0	0	0	0	0	0	0	0
	Exe	Teign	Seine nets	5	5	16	8	5	6	9	10	20	4	1
			Seine nets	81	146	244	321	315	207	218	117	191	182	188
	Dart	Avon	Seine nets	289	605	727	564	451	538	75	67	107	160	196
			Fixed Engine	0	0	0	0	0	0	0	0	0	0	0
	Camel	Tavy	Drift nets	16	40	6	21	1	0	0	0	0	0	1
			Seine nets	21	14	20	32	0	0	0	0	0	0	0
	Tamar	Tavy/Tamar (a)	Seine nets	45	66	55	44	0	0	0	0	0	0	0
			Seine net	0	0	0	0	0	0	0	0	0	0	0
	Lynher	Fowey	Seine nets	0	5	4	1	0	0	0	0	0	0	0
			Seine nets	6	14	3	1	1	0	0	0	0	0	0
	Taw/Torrige	Lyn	Seine nets	450	676	212	340	151	128	65	43	100	77	93
			Fixed Engine	0	0	0	0	0	0	0	0	0	0	0
<b>Whole area Total</b>	<b>Total</b>	<b>1694</b>	<b>2028</b>	<b>2461</b>	<b>1798</b>	<b>1577</b>	<b>1071</b>	<b>622</b>	<b>582</b>	<b>694</b>	<b>688</b>	<b>692</b>		
Midlands	Severn	Seine nets	0	0	0	0	0	0	0	0	0	0	0	
		Lave nets	0	0	0	0	0	0	0	0	0	0	1	
		Fixed Engines	0	0	0	0	0	0	0	0	0	7	0	
	<b>Whole area Total</b>	<b>Total</b>	<b>0</b>	<b>0</b>	<b>0</b>	<b>0</b>	<b>0</b>	<b>0</b>	<b>0</b>	<b>0</b>	<b>0</b>	<b>7</b>	<b>1</b>	
Environment Agency Wales	Wye	Lave nets	0	0	0	0	0	0	0	0	0	0	0	
		Drift nets	0	0	0	0	0	0	0	0	0	0	0	
	Usk	Tywi	Putcher rank	0	0	0	0	0	0	0	0	0	0	0
			<b>River total</b>	<b>0</b>	<b>0</b>	<b>0</b>	<b>0</b>	<b>0</b>	<b>0</b>	<b>0</b>	<b>0</b>	<b>0</b>	<b>0</b>	<b>0</b>
			Seine nets	543	613	604	504	567	589	247	400	306	383	311
	Taf	S.W.Coastal	Coracle nets	619	738	555	766	205	324	197	351	367	637	655
			<b>River total</b>	<b>1162</b>	<b>1351</b>	<b>1159</b>	<b>1270</b>	<b>772</b>	<b>913</b>	<b>444</b>	<b>751</b>	<b>673</b>	<b>1020</b>	<b>966</b>
			Wade net	0	0	0	2	0	2	0	0	1	0	0
	E+W.Cleddau	Teifi	Coracle net	64	6	39	12	17	17	28	0	0	0	0
			River total	64	6	39	14	17	19	28	0	1	0	0
			Seine nets	0	0	0	0	0	0	0	0	0	0	0
	Nevern	Dyfi	Seine nets	0	0	0	0	0	0	0	0	0	0	0
			<b>River total</b>	<b>0</b>	<b>0</b>	<b>0</b>	<b>0</b>	<b>0</b>	<b>0</b>	<b>0</b>	<b>0</b>	<b>0</b>	<b>0</b>	<b>0</b>
			Compass nets	27	36	10	11	4	10	2	0	5	1	0
	E+W.Cleddau	Dysynni	Seine net	20	0	0	0	0	0	0	0	0	13	6
			Seine nets	115	170	7	15	13	79	13	38	80	94	222
			Coracle nets	325	502	378	500	396	263	112	90	194	299	786
	Mawddach	Glaslyn	<b>River total</b>	<b>440</b>	<b>672</b>	<b>385</b>	<b>515</b>	<b>409</b>	<b>342</b>	<b>125</b>	<b>128</b>	<b>274</b>	<b>407</b>	<b>1008</b>
			Seine nets	148	151	210	51	16	90	67	33	29	31	75
			Seine net	22	88	14	45	42	11	4	0	21	20	16
	Dwyfawr	N. Caernarfon	Seine nets	0	1	0	0	0	0	1	0	4	0	0
			Seine nets	9	0	20	0	0	0	0	0	0	0	0
			Seine nets	0	0	0	0	0	0	0	0	0	0	0
	Seiont/Gwyrfa	Ogwen	Seine nets	0	0	0	0	0	0	0	0	0	0	0
			Seine nets	0	0	0	0	0	0	0	0	0	0	0
			Seine nets	17	0	0	0	0	0	0	0	0	0	0
	Conwy	Clwyd	Basket trap	0	0	0	0	0	0	0	0	0	0	0
			Seine nets	6	3	0	8	10	11	3	6	0	2	3
			<b>River total</b>	<b>6</b>	<b>3</b>	<b>0</b>	<b>8</b>	<b>10</b>	<b>11</b>	<b>3</b>	<b>6</b>	<b>0</b>	<b>2</b>	<b>3</b>
	Dee	Eden + Esk area	Sling nets	0	0	0	0	0	0	0	0	0	0	0
			Trammel nets	1	5	95	15	15	13	21	16	0	0	0
			Seine nets	26	21	11	35	52	33	0	2	15	0	0
	<b>Whole area Total</b>	<b>Total</b>	<b>27</b>	<b>26</b>	<b>106</b>	<b>50</b>	<b>67</b>	<b>46</b>	<b>21</b>	<b>18</b>	<b>15</b>	<b>0</b>	<b>0</b>	
	<b>Whole area Total</b>	<b>Total</b>	<b>1942</b>	<b>2334</b>	<b>1943</b>	<b>1964</b>	<b>1337</b>	<b>1442</b>	<b>695</b>	<b>936</b>	<b>1022</b>	<b>1480</b>	<b>2074</b>	
	North West	Ribble	Drift nets	21	37	18	11	32	8	10	5	1	13	34
			Haaf nets	233	312	238	325	491	274	244	125	248	252	677
			Drift nets	93	122	35	47	79	86	48	20	25	44	76
Seine net			0	54	60	22	35	18	4	6	27	0	0	
<b>River total</b>		<b>326</b>	<b>488</b>	<b>333</b>	<b>405</b>	<b>637</b>	<b>386</b>	<b>306</b>	<b>156</b>	<b>300</b>	<b>296</b>	<b>753</b>		
Kent		Leven	Lave nets	0	24	0	3	0	7	5	4	0	5	6
			Lave nets	15	3	1	1	1	0	0	1	2	0	0
Duddon		S&W Cumbria area	Seine net	*	*	*	*	*	*	*	*	*	*	*
			Drift nets + var. nets	21	31	9	16	0	0	0	0	0	0	0
Eden + Esk area		Haaf nets + var. nets	Haaf nets	932	1618	490	800	701	634	278	253	377	619	640
	<b>Whole area Total</b>		<b>1315</b>	<b>2201</b>	<b>851</b>	<b>1225</b>	<b>1339</b>	<b>1027</b>	<b>589</b>	<b>413</b>	<b>679</b>	<b>935</b>	<b>1433</b>	
<b>England and Wales</b>	<b>Total</b>	<b>46022</b>	<b>44926</b>	<b>37018</b>	<b>29248</b>	<b>26055</b>	<b>23429</b>	<b>25311</b>	<b>20351</b>	<b>27974</b>	<b>30755</b>	<b>60218</b>		

(a) Catches recorded under Tavy and Tamar as appropriate

N = North  
S = South

Section 6  
Table 16

Summary of salmon rod catch, 2000-2010

Environment Agency Region	River	2000	2001	2002	2003	2004 (a)	2005	2006	2007	2008	2009	2010	
North East	Aln	5	1	4	55	15	19	9	26	6	28	56	
	Coquet	616	649	689	566	1177	1108	780	641	842	462	978	
	Tyne	2297	2513	2585	2163	4122	3591	3795	3091	3389	3073	5115	
	Wear	533	436	535	586	1055	971	823	788	959	716	1531	
	Tees	105	81	93	86	208	107	135	159	267	69	69	
	Ouse (Yorks.)	0	0	2	8	6	16	22	18	10	20	25	
	Esk (Yorks.)	44	33	57	43	189	111	197	145	159	52	172	
	Others	0	20	2	0	16	10	13	4	2	1	1	
<b>Total</b>		<b>3600</b>	<b>3733</b>	<b>3967</b>	<b>3507</b>	<b>6788</b>	<b>5933</b>	<b>5774</b>	<b>4872</b>	<b>5634</b>	<b>4421</b>	<b>7947</b>	
Anglian	Unknown	0	0	0	0	0	0	0	0	0	0	1	
Thames	Thames	0	0	0	0	0	0	0	0	0	0	2	
Southern	Test	147	215	342	167	459	351	210	256	419	185	110	
	Itchen	168	190	189	58	150	87	121	210	289	205	252	
	Others	1	0	0	0	0	0	0	0	3	1	4	
<b>Total</b>		<b>316</b>	<b>405</b>	<b>531</b>	<b>225</b>	<b>609</b>	<b>438</b>	<b>331</b>	<b>466</b>	<b>711</b>	<b>391</b>	<b>366</b>	
South West	Avon (Hants.)	14	43	104	109	78	132	134	116	67	76	47	
	Piddle	1	1	13	5	8	3	1	1	0	2	1	
	Frome	82	95	115	57	60	58	57	69	46	35	43	
	Exe	649	187	210	146	594	269	187	340	540	355	404	
	Teign	97	43	52	47	194	71	63	87	214	72	81	
	Dart	100	50	34	37	156	66	49	75	124	68	90	
	Avon (Devon)	33	11	53	35	76	31	59	54	61	20	61	
	Plym	19	13	19	7	3	6	26	14	23	5	18	
	Tavy	66	55	16	14	69	85	76	68	81	55	128	
	Tamar	250	114	143	114	316	131	197	169	358	229	387	
	Lynher	67	38	30	28	79	74	56	90	67	77	135	
	Fowey	163	117	218	113	164	242	254	114	190	98	305	
	Camel	234	226	266	307	389	334	355	369	358	206	546	
	Torrige	71	13	28	19	89	46	44	56	119	53	69	
	Taw	403	126	153	112	317	103	151	345	287	189	178	
	Lyn	216	246	206	97	168	56	67	88	117	77	111	
	Others	22	18	77	19	39	18	26	16	34	31	24	
<b>Total</b>		<b>2487</b>	<b>1396</b>	<b>1737</b>	<b>1266</b>	<b>2799</b>	<b>1725</b>	<b>1802</b>	<b>2071</b>	<b>2686</b>	<b>1648</b>	<b>2628</b>	
Midlands	Severn	327	273	195	333	319	430	356	280	294	212	234	
	Others	0	0	0	0	0	0	0	0	0	1	1	
<b>Total</b>		<b>327</b>	<b>273</b>	<b>195</b>	<b>333</b>	<b>319</b>	<b>430</b>	<b>356</b>	<b>280</b>	<b>294</b>	<b>213</b>	<b>235</b>	
Environment Agency, Wales	Wye	592	733	357	460	788	683	519	675	1099	620	348	
	Usk	872	857	616	305	1115	772	748	1158	1157	491	580	
	Taff	66	18	4	0	11	15	21	14	21	20	53	
	Ogmore	81	62	51	27	107	33	39	54	76	51	106	
	Afan	7	8	7	5	10	6	5	3	9	15	18	
	Neath	64	70	90	35	73	37	85	53	99	62	76	
	Tawe	47	113	148	61	155	164	184	183	195	114	230	
	Loughor	16	13	13	8	38	29	10	39	51	30	60	
	Tywi	420	227	390	432	795	507	642	737	720	441	917	
	Taf	83	99	41	32	178	103	105	64	92	61	223	
	E+W.Cledau	58	46	34	36	51	40	32	72	102	78	75	
	Nevern	27	30	19	34	45	27	65	46	38	17	43	
	Teifi	584	616	507	333	1062	472	552	518	571	325	922	
	Aeron	6	7	12	0	18	0	2	1	3	2	3	
	Ystwyth	18	11	8	1	9	3	5	10	3	5	11	
	Rheidol	25	30	15	12	50	38	27	31	62	16	18	
	Dyfi	134	145	49	46	160	114	207	159	197	84	168	
	Dysynni	7	2	5	1	5	2	2	2	3	5	4	
	Mawddach	127	130	121	101	206	126	118	111	94	51	136	
	Artro	1	4	4	0	3	4	7	0	5	2	5	
	Dwyrhyd	6	17	33	16	42	17	22	10	21	5	4	
	Glaslyn	9	11	19	4	30	9	17	29	43	22	22	
	Dwyfawr	18	11	8	7	31	11	14	9	18	4	26	
	Llyfni	12	11	22	14	9	2	0	4	1	3	6	
	Gwyrfai	1	0	0	0	4	1	0	1	1	1	2	
	Seiont	39	39	9	12	99	57	50	35	32	12	41	
	Ogwen	101	122	68	43	114	125	52	101	121	71	111	
	Conwy (a)	199	220	110	147	264	162	157	192	190	144	327	
	Clwyd	60	74	49	35	77	18	31	135	176	79	228	
	Dee	359	616	493	421	1080	812	621	683	885	514	800	
	Others	10	9	10	4	23	19	16	7	37	11	10	
	<b>Total</b>		<b>4049</b>	<b>4351</b>	<b>3312</b>	<b>2632</b>	<b>6652</b>	<b>4408</b>	<b>4355</b>	<b>5136</b>	<b>6122</b>	<b>3356</b>	<b>5573</b>
North West	Ribble	827	349	692	556	1442	1094	1054	1062	1372	1007	1247	
	Wyre	5	11	15	3	26	4	5	8	25	13	10	
	Lune	1440	566	1127	823	1893	1481	1163	1152	1374	808	1125	
	Kent	576	260	352	233	582	567	493	411	539	367	692	
	Leven	17	6	7	12	61	65	51	30	38	36	102	
	Duddon	12	24	17	8	63	56	69	65	125	50	73	
	Esk (Cumbrian)	114	50	80	20	74	107	104	227	90	27	25	
	Irt	105	30	76	42	133	131	148	119	119	56	127	
	Calder	67	14	61	22	51	31	47	16	53	26	73	
	Ehen	443	164	395	115	344	275	274	330	365	237	588	
	Derwent	1328	1063	888	466	1770	1386	887	1458	1286	812	1248	
	Ellen	22	10	16	3	29	8	2	6	30	13	43	
	Eden	1093	1122	963	808	2622	2223	1634	1407	1571	1362	1431	
	Esk (Border)	729	521	812	431	897	978	808	841	1065	697	1230	
	Others	36	19	31	5	35	40	32	19	13	21	60	
	<b>Total</b>		<b>6814</b>	<b>4209</b>	<b>5532</b>	<b>3547</b>	<b>10022</b>	<b>8446</b>	<b>6771</b>	<b>7151</b>	<b>8065</b>	<b>5532</b>	<b>8074</b>
	<b>England and Wales</b>		<b>17596</b>	<b>14383</b>	<b>15282</b>	<b>11519</b>	<b>27336</b>	<b>21418</b>	<b>19509</b>	<b>19984</b>	<b>23512</b>	<b>15561</b>	<b>24826</b>

Figures include all fish caught, not just retained fish  
2010 figures quotes for the rivers Test, Itchen and Avon (Hants) are from catch returns and not owners data. Please see Table 9 footnotes for owners data figures.  
(a) 2004 figure amended from earlier reports

## Section 6

Table 17 Summary of sea trout rod catch, 2000-2010

Environment Agency Region	River	2000	2001	2002	2003	2004	2005	2006	2007	2008	2009	2010	
North East	Aln	60	69	108	182	65	74	87	139	83	104	80	
	Coquet	636	418	457	148	557	330	325	254	531	244	530	
	Tyne	1498	2131	2371	1585	2095	1724	1636	1660	2036	1406	2687	
	Wear	1331	1165	2374	1448	2143	1497	1298	1356	2080	1271	1911	
	Tees	88	39	62	61	143	108	51	50	68	66	39	
	Esk (Yorks.)	564	276	519	479	489	376	552	672	493	206	767	
	Others	51	72	82	30	43	29	101	41	32	21	7	
<b>Total</b>		<b>4228</b>	<b>4170</b>	<b>5973</b>	<b>3933</b>	<b>5535</b>	<b>4138</b>	<b>4050</b>	<b>4172</b>	<b>5323</b>	<b>3318</b>	<b>6021</b>	
Anglian	Unknown	0	0	0	0	0	0	0	0	0	3	4	
Thames	Thames	0	0	1	1	2	0	1	8	0	0	2	
Southern	Test	147	280	260	357	216	114	115	89	74	177	177	
	Itchen	481	1067	866	676	411	147	324	213	242	275	614	
	Ouse (Sussex)	78	146	161	101	76	27	41	51	44	29	60	
	Others	116	215	228	209	187	157	109	99	135	141	161	
	<b>Total</b>		<b>822</b>	<b>1708</b>	<b>1515</b>	<b>1343</b>	<b>890</b>	<b>445</b>	<b>589</b>	<b>452</b>	<b>495</b>	<b>622</b>	<b>1012</b>
South West	Avon (Hants.)	645	2354	766	1412	456	927	237	152	187	1050	538	
	Stour (Hants.)	20	30	13	77	14	28	30	9	6	13	17	
	Piddle	0	5	34	57	27	36	24	68	37	48	16	
	Frome	111	206	207	241	211	153	101	118	50	232	234	
	Axe	261	535	420	287	204	254	288	295	233	503	417	
	Otter	117	74	165	118	53	63	53	49	87	73	91	
	Exe	29	16	45	59	41	32	19	32	42	24	24	
	Teign	589	591	798	599	616	581	440	530	589	833	801	
	Dart	651	782	712	718	574	599	453	334	242	486	519	
	Avon (Devon)	237	229	395	661	435	168	417	93	290	36	131	
	Erme	37	53	50	48	26	68	53	64	14	60	85	
	Yealm	118	67	82	152	71	52	66	28	37	63	63	
	Plym	131	156	112	77	60	103	82	74	75	152	241	
	Tavy	327	462	260	282	271	426	158	122	285	296	642	
	Tamar	423	289	524	515	537	315	215	252	298	608	580	
	Lynher	281	166	138	277	142	207	150	139	191	262	338	
	Looe	99	188	97	146	123	162	88	68	14	52	131	
	Fowey	951	1180	1037	1056	844	1184	772	752	519	1073	1174	
	Camel	544	877	1031	1498	1112	1022	563	441	333	581	903	
	Torridge	239	426	335	321	249	181	82	106	219	151	172	
	Taw	506	175	822	596	389	562	208	451	570	482	395	
	Lyn	60	56	60	56	43	21	26	29	30	39	41	
	Others	96	102	150	91	72	147	65	53	5	77	25	
	<b>Total</b>		<b>6472</b>	<b>9019</b>	<b>8253</b>	<b>9344</b>	<b>6570</b>	<b>7291</b>	<b>4590</b>	<b>4259</b>	<b>4353</b>	<b>7194</b>	<b>7578</b>
	Midlands	Severn	12	8	19	12	14	105	14	32	25	55	20
		Others	0	0	0	0	0	0	0	0	0	2	3
	<b>Total</b>		<b>12</b>	<b>8</b>	<b>19</b>	<b>12</b>	<b>14</b>	<b>105</b>	<b>14</b>	<b>32</b>	<b>25</b>	<b>57</b>	<b>23</b>
Environment Agency, Wales	Wye	19	45	27	24	36	84	42	39	48	39	25	
	Usk	520	125	290	320	238	244	184	129	191	100	119	
	Taff	105	174	90	71	62	55	12	45	115	69	54	
	Rhymney	10	14	55	28	17	9	11	23	28	26	20	
	Ogmore	677	547	878	572	584	784	193	386	418	468	232	
	Afan	188	166	103	162	168	153	63	158	161	120	112	
	Neath	535	673	782	400	532	393	298	487	317	492	493	
	Tawe	136	373	424	272	173	372	153	243	144	242	426	
	Loughor	322	258	550	577	369	538	184	277	361	258	247	
	Gwendraeth	58	99	154	101	59	56	61	71	62	10	47	
	Tywi	4134	2056	4554	4175	2587	4698	2091	3271	2570	2845	2770	
	Taf	273	224	562	475	204	528	205	280	447	377	295	
	E+W.Cleddau	755	651	869	738	439	937	227	511	681	499	564	
	Nevern	584	1078	846	1125	606	722	539	415	674	488	755	
	Teifi	3235	3694	4841	3997	3126	4342	1990	1774	1746	2076	2186	
	Aeron	280	364	777	422	396	205	35	306	151	96	126	
	Ystwyth	211	223	256	83	276	107	19	376	132	166	185	
	Rheidol	473	693	703	961	551	741	744	587	231	238	197	
	Dyfi	2032	2185	1793	1474	1362	1439	1054	1459	1215	1425	2093	
	Dyswynni	435	406	343	688	471	502	284	410	315	420	396	
	Mawddach	1020	1974	1529	1196	1127	1024	387	594	325	411	704	
	Artro	40	94	63	44	30	29	23	17	24	12	28	
	Dwyrdd	124	367	381	147	70	50	57	48	78	60	26	
	Glaslyn	383	240	1096	534	567	592	489	682	520	533	826	
	Dwyfawr	1027	1261	1111	1246	347	691	235	455	145	187	557	
	Llyfni	384	542	290	518	187	221	108	257	63	85	134	
	Gwyrfai	2	3	22	0	4	4	0	9	0	7	5	
	Seiont	26	89	85	82	112	29	19	21	28	69	71	
	Ogwen	104	112	193	148	130	177	86	170	65	163	287	
	Conwy (a)	391	583	630	572	464	489	282	585	434	423	498	
	Clwyd	708	1319	868	982	1085	782	490	728	949	880	1498	
	Dee	177	283	414	249	265	303	253	276	192	181	493	
	Others	71	76	110	120	192	177	67	201	140	91	205	
<b>Total</b>		<b>19439</b>	<b>20991</b>	<b>25689</b>	<b>22503</b>	<b>16836</b>	<b>21477</b>	<b>10885</b>	<b>15290</b>	<b>12970</b>	<b>13556</b>	<b>16674</b>	
North West	Ribble	1511	499	1553	1296	1294	1313	683	1174	826	1281	1584	
	Wyre	33	32	62	26	66	5	24	30	16	44	59	
	Lune	2833	1426	2549	2268	1760	1380	962	1120	1068	1262	1009	
	Kent	527	214	403	426	431	570	294	456	335	469	731	
	Leven	104	54	116	70	69	30	32	132	34	51	49	
	Duddon	60	128	38	54	143	181	132	159	183	179	188	
	Esk (Cumbrian)	203	93	189	88	112	140	93	199	29	39	194	
	Irt	195	20	209	95	110	125	29	142	84	113	185	
	Calder	13	2	16	10	9	10	2	4	7	16	25	
	Ehen	854	49	1131	1113	466	688	516	193	353	179	325	
	Derwent	978	405	321	250	384	294	214	212	159	237	317	
	Ellen	78	56	132	41	129	69	42	155	35	74	108	
	Eden	703	330	370	881	427	705	238	241	186	347	461	
	Esk (Border)	2174	1122	1107	1260	749	1138	581	933	1221	1271	905	
	Others	79	33	49	15	27	43	21	32	5	46	89	
	<b>Total</b>		<b>10345</b>	<b>4463</b>	<b>8245</b>	<b>7893</b>	<b>6176</b>	<b>6691</b>	<b>3863</b>	<b>5182</b>	<b>4541</b>	<b>5608</b>	<b>6229</b>
	Unknown Region		4	15	101	72	77	172	277	3	0	1	0
<b>England and Wales</b>		<b>41322</b>	<b>40374</b>	<b>49796</b>	<b>45101</b>	<b>36100</b>	<b>40319</b>	<b>24269</b>	<b>29398</b>	<b>27707</b>	<b>30359</b>	<b>37543</b>	

Figures include all fish caught, not just retained fish

(a) 2004 figure amended from earlier reports

## Section 6

Table 18

## Reported Net Effort data for Salmon &amp; Sea Trout - 2010

Environment Agency Region	River/Fishery	Fishing Method	No. Lics.	Days available (a)	Allowable effort (b) net days (NE)/tides (other)	Utilised effort		% utilised	Average day (NE)/tide (other) per licence	Catch Salmon	Salmon catch per lic.day (NE)/tide (other)	Catch Sea trout	Sea trout catch per lic. day (NE)/tide (other)
						net days (NE)	net tides (other)						
North East Northumbria	Coastal (N)	Drift	12 (c)	66	792	608		77	51	11,544	18.99	9710	15.97
		T nets	32 (c)	113	3616	966		27	30	7,462	7.72	29436	30.47
	Coastal (S)	Drift nets	0	66	0	0		0	0	0	0.00	0	0.00
		T nets	1	113	113	21		19	21	49	2.33	323	15.38
North East Yorkshire	Coastal	Drift nets	2	66	132	109		83	55	670	6.15	961	8.82
		T or J nets	28	113	3164	1026		32	37	257	0.25	15116	14.73
Anglian	Coastal	Drift nets	23	130	2990		154	5	7	1	0.01	415	2.69
		Other nets (var.)	7	130	910		33	4	5	0	0.00	56	1.70
South West	Avon + Stour	Seine nets	2	45	90		91	101	46	41	0.45	213	2.34
	Poole Harbour	Seine net	1	45	45		16	36	16	2	0.13	0	0.00
	Exe	Seine nets	11	55	605		59	10	5	121	2.05	1	0.02
	Teign	Seine nets	3	121	363		107	29	36	119	1.11	188	1.76
	Dart	Seine nets	3	100	300		166	55	55	69	0.42	196	1.18
	Camel	Drift nets	6	66	396		6	2	1	15	2.50	1	0.00
	Tavy	Seine nets	2	66	132		0	-	-	0	-	0	-
	Tamar	Seine nets	3	66	198		-	-	-	0	-	0	-
	Tavy/Tamar	Seine net	-	-	-		-	-	-	0	-	0	-
	Lynher	Seine nets	1	66	66		-	-	-	0	-	0	-
	Fowey	Seine nets	1	131	131		0	0	0	0	0.00	0	0.00
	Taw/Torridge	Seine nets	3	45	135		80	59	27	139	1.74	93	1.16
	Midlands	Severn	Seine nets	1	66	66		0	0	0	0	0.00	0
Lave nets			25 (e)	66	1650		103	6	4	110	1.07	1	0.01
Fixed Engines			2 (f)	76	152		70	46	35	128	1.83	0	0.00
Environment Agency Wales	Wye	Lave nets	6	66	396		8	4	1	7	0.88	0	0.00
	Tywi	Seine nets	3	110	330		189	57	63	20	0.11	311	1.65
		Coracle nets	7	110	770		184	24	26	40	0.22	655	3.56
		Wade net	1	45	45		0	0	0	0	0.00	0	0.00
	Taf	Coracle net	1	110	110		0	0	0	0	0.00	0	0.00
		Compass nets	6	66	396		14	4	2	13	0.93	0	0.00
	E+W.Cleddau	Seine nets	2	109	218		59	27	30	56	0.95	222	3.76
		Coracle nets	9	109	981		303	31	34	78	0.26	786	2.59
	Dyfi	Seine nets	3	109	327		32	10	11	2	0.06	75	2.34
	Dysynni	Seine net	1	66	66		11	17	11	0	0.00	16	0.00
	Mawddach	Seine nets	2	66	132		0	0	0	0	0.00	0	0.00
	Glaslyn	Seine nets	0	66	0		0	0	0	0	0.00	0	0.00
	Conwy	Basket trap	0	92	0		0	0	0	0	0.00	0	0.00
		Seine nets	3	66	198		10	5	3	7	0.70	2	0.20
	Nevern	Seine nets	1	66	66		4	6	4	0	0.00	6	0.00
	North West (e)	Ribble	Drift nets	5	66	330		50	15	10	95	1.90	34
Lune		Haaf nets	12	66	792		570	72	48	243	0.43	677	1.19
		Drift nets	7	66	462		155	34	22	211	1.36	76	0.49
		Seine net	0	66	0		0	-	-	0	0.00	0	0.00
Kent		Lave nets	7	66	462		25	5	4	26	1.04	6	0.24
		Lave nets	2	44	88		3	3	2	2	0.67	0	0.00
S&W Cumbria		Drift nets	-	-	-		-	-	-	-	-	0	-
Eden + Esk		Haaf nets	66	73	4818		1189	25	18	1059	0.89	637	0.54
Eden		Coop nets	3	66	198		54	27	18	29	0.54	3	0.06

Key:

(a) Days available is the total of the open season minus weekly closure periods. Part days included as full days - voluntary closure or buy-outs not taken into account

(b) Allowable effort is number of licences X available days for NE fisheries. Allowable effort for other fisheries is number of licences X available days X 1.4 tides.

(c) Separate licences for drift and T nets were issued for the first time in the northern area in 1993.

(d) Catches included under Tavy and Tamar as appropriate.

(e) Figures for half- and full-season lave nets combined.

(f) Assume all effort utilised

nr = not recorded

## Section 6

Table 19

## Reported Rod Effort Data for Salmon &amp; Sea Trout – 2010

Environment Agency Region	River	Number of returns with effort data	Number of days fished	Number of days fished per return	(a) Number of salmon and grilse recorded	Catch per licence day	(a) Number of sea trout recorded	Catch per licence day	Days to catch a salmonid
North East	Aln	48	834	17.38	56	0.067	80	0.096	6.13
	Coquet	412	5820	14.13	916	0.157	513	0.088	4.07
	Tyne	2416	20976	8.68	4448	0.212	2318	0.111	3.10
	Wear	676	10616	15.70	1328	0.125	1681	0.158	3.53
	Tees	164	1667	10.16	65	0.039	39	0.023	16.03
	Esk (Yorks.)	190	1723	9.07	151	0.088	619	0.359	2.24
	Ouse (Yorks.)	56	376	6.71	24	0.064	3	0.008	13.93
Thames	Thames	10	36	3.60	1	0.028	0	0.000	36.00
Southern	Test	143	771	5.39	105	0.136	158	0.205	2.93
	Itchen	154	792	5.14	249	0.314	490	0.619	1.07
	Beaulieu	24	103	4.29	0	0.000	38	0.369	2.71
	Ouse (Sussex)	47	533	11.34	4	0.008	51	0.096	9.69
	Adur	11	71	6.45	0	0.000	8	0.113	8.88
	Lymington	9	96	10.67	0	0.000	21	0.219	4.57
	Great Stour	6	99	16.50	0	0.000	1	0.010	99.00
South West	Avon (Hants.)	186	1222	6.57	40	0.033	528	0.432	2.15
	Stour (Hants.)	14	80	5.71	0	0.000	17	0.213	4.71
	Piddle	19	103	5.42	1	0.010	16	0.155	6.06
	Frome	62	482	7.77	30	0.062	200	0.415	2.10
	Axe	114	928	8.14	7	0.008	365	0.393	2.49
	Otter	32	283	8.84	0	0.000	90	0.318	3.14
	Exe	275	2135	7.76	374	0.175	24	0.011	5.36
	Teign	121	1389	11.48	71	0.051	708	0.510	1.78
	Dart	130	1015	7.81	71	0.070	357	0.352	2.37
	Avon (Devon)	90	755	8.39	58	0.077	107	0.142	4.58
	Erme	13	159	12.23	7	0.044	82	0.516	1.79
	Yealm	10	90	9.00	9	0.100	63	0.700	1.25
	Plym	26	468	18.00	12	0.026	191	0.408	2.31
	Tavy	82	1004	12.24	91	0.091	555	0.553	1.55
	Tamar	389	2233	5.74	335	0.150	495	0.222	2.69
	Lynher	67	892	13.31	132	0.148	331	0.371	1.93
	Looe	6	85	14.17	0	0.000	104	1.224	0.82
	Fowey	226	2814	12.45	239	0.085	1052	0.374	2.18
	Camel	287	3300	11.50	433	0.131	789	0.239	2.70
	Taw	288	2362	8.20	162	0.069	353	0.149	4.59
Torridge	146	1091	7.47	67	0.061	156	0.143	4.89	
Lyn	99	316	3.19	81	0.256	26	0.082	2.95	
Midlands	Severn	337	5020	14.90	216	0.043	22	0.004	21.09
Environment Agency Wales	Wye	716	5464	7.63	292	0.053	24	0.004	17.29
	Usk	558	5652	10.13	489	0.087	111	0.020	9.42
	Taff	34	423	12.44	49	0.116	46	0.109	4.45
	Rhymney	7	70	10.00	1	0.014	16	0.229	4.12
	Ogmore	102	1359	13.32	79	0.058	176	0.130	5.33
	Afan	33	479	14.52	17	0.035	106	0.221	3.89
	Neath	96	1514	15.77	52	0.034	434	0.287	3.12
	Tawe	125	2423	19.38	172	0.071	395	0.163	4.27
	Loughor	90	1599	17.77	49	0.031	211	0.132	6.15
	Gwendraeth	6	223	37.17	3	0.013	41	0.184	5.07
	Tywi	1091	13490	12.36	752	0.056	2371	0.176	4.32
	Taf	119	1969	16.55	158	0.080	268	0.136	4.62
	E&W Cleddau	152	2325	15.30	69	0.030	525	0.226	3.91
	Nevern	77	1139	14.79	41	0.036	668	0.586	1.61
	Teifi	731	8394	11.48	702	0.084	1823	0.217	3.32
	Aeron	26	532	20.46	3	0.006	123	0.231	4.22
	Ystwyth	29	347	11.97	11	0.032	170	0.490	1.92
	Rheidol	60	738	12.30	16	0.022	180	0.244	3.77
	Dyfi	257	1950	7.59	151	0.077	1806	0.926	1.00
	Dysynni	75	716	9.55	4	0.006	394	0.550	1.80
	Mawddach	197	1790	9.09	109	0.061	599	0.335	2.53
	Artro	7	46	6.57	5	0.109	24	0.522	1.59
	Dwryrd	12	161	13.42	4	0.025	26	0.161	5.37
	Glaslyn	56	641	11.45	16	0.025	627	0.978	1.00
	Dwyfawr	51	584	11.45	20	0.000	308	0.527	1.78
	Llyfni	26	311	11.96	6	0.000	75	0.241	3.84
	Gwyrfai	6	43	7.17	1	0.023	5	0.116	7.17
	Seiont	50	854	17.08	39	0.046	67	0.078	8.06
	Ogwen	61	947	15.52	97	0.102	262	0.277	2.64
Conwy	197	1920	9.75	262	0.136	435	0.227	2.75	
Clwyd	229	2430	10.61	188	0.077	1345	0.553	1.59	
Dee	855	9082	10.62	701	0.077	455	0.050	7.86	
North West	Ribble	1090	11183	10.26	1174	0.105	7429	0.664	1.30
	Wyre	33	344	10.42	9	0.026	52	0.151	5.64
	Lune	855	8418	9.85	1015	0.121	934	0.111	4.32
	Kent	337	3842	11.40	596	0.155	690	0.180	2.99
	Leven	56	446	7.96	97	0.217	39	0.087	3.28
	Duddon	58	579	9.98	63	0.109	181	0.313	2.37
	Esk (Cumbrian)	53	377	7.11	21	0.056	194	0.515	1.75
	Irt	100	805	8.05	119	0.148	183	0.227	2.67
	Calder	35	280	8.00	73	0.261	25	0.089	2.86
	Ehen	167	3258	19.51	521	0.160	292	0.090	4.01
	Derwent	548	5852	10.68	1137	0.194	280	0.048	4.13
	Ellen	24	306	12.75	37	0.121	97	0.317	2.28
	Eden	940	11348	12.07	1252	0.110	424	0.037	6.77
	Esk (Border)	639	4473	7.00	1093	0.244	754	0.169	2.42

Notes: Effort data is reported for both salmon and sea trout and can not be separated. (a) The table includes only returns upon which the number of days fished were reported. Some returns contained data for two or more rivers.

**Section 6**  
**Table 20**

**Estimated Proportions of Grilse & Multi- Sea Winter (MSW) Salmon in Declared Rod Catch- 2010**

Environment Agency Region	River	Number of grilse	% grilse	Number of MSW	% MSW
North East	Coquet	874	89	103	11
	Tyne	3270	64	1806	36
	Wear	1142	76	365	24
Southern	Test	91	83	19	17
	Itchen	216	86	36	14
South West	Frome	32	74	11	26
	Exe	345	85	59	15
	Teign	73	90	8	10
	Dart	79	88	11	12
	Tavy	117	92	10	8
	Tamar	338	88	48	12
	Lynher	128	95	7	5
	Fowey	279	92	25	8
	Camel	478	92	42	8
	Taw	136	76	42	24
	Torridge	43	62	26	38
	Lyn	92	83	19	17
Midlands	Severn	95	41	139	59
Environment Agency Wales	Wye	179	52	168	48
	Usk	449	78	129	22
	Ogmore	85	83	18	17
	Tawe	191	85	33	15
	Tywi	737	84	142	16
	Taf	195	91	19	9
	E&W Cleddau	67	91	7	9
	Teifi	772	88	107	12
	Dyfi	151	91	15	9
	Mawddach	114	86	18	14
	Ogwen	102	92	9	8
	Conwy	284	88	37	12
	Dee	607	78	175	22
North West	Ribble	939	76	291	24
	Lune	933	84	184	16
	Kent	603	89	71	11
	Leven	92	90	10	10
	Irt	108	85	19	15
	Ehen	543	93	39	7
	Derwent	1026	84	201	16
	Eden	1048	73	378	27
	Esk (Border)	948	78	272	22
<b>Total</b>		18007	78	5158	22

Notes: The grilse/MSW split is attributed only to fish with a declared capture date and weight  
The splitting model uses monthly age-weight data collected from the fish trap on the River Dee, Wales

Section 6  
Table 21

Salmon Stocking – number of eggs, fry, parr and smolts released - 2010

Environment			Unfed	Fed	0+	1+	1+	2+
Agency Region	River	Tributary	Ova	Fry	Fry	Parr	Parr	Smolts
North East	MainTyne	Main river (plus var. tribs.)	0	0	0	34,250	0	0
	South Tyne	Main River (plus var. tribs.)	0	0	0	113,679	35,776	0
	North Tyne	Main River (tribs + Kielder Burn)	0	0	0	165,526	25,838	0
	Rede	Main River (plus var. tribs.)	0	0	0	124,912	41,879	0
	Esk (Yorks.)		0	0	100,000	0	0	0
	<b>Total</b>		<b>0</b>	<b>0</b>	<b>100,000</b>	<b>438,367</b>	<b>103,493</b>	<b>0</b>
Thames	Thames	Main River	0	0	0	0	0	0
		Kennet	0	0	0	0	7,249	9,443
	<b>Total</b>		<b>0</b>	<b>0</b>	<b>0</b>	<b>0</b>	<b>7,249</b>	<b>9,443</b>
Southern	Itchen (Egg box)		0	9,913	0	0	0	0
	<b>Total</b>		<b>0</b>	<b>9,913</b>	<b>0</b>	<b>0</b>	<b>0</b>	<b>0</b>
South West	Lynher		0	0	24,000	0	0	0
	Axe		0	0	6,200	0	0	0
	Tamar		0	0	36,660	0	0	0
	Haddeo		0	0	2,500	2500	0	0
	Lowman		0	0	1,000	1000	0	0
	Torrige		0	13,000	0	0	0	0
	Fowey (plus tribs.)		0	0	16,800	0	0	0
	Camel (plus tribs.)		0	0	21,100	0	0	0
	<b>Total</b>		<b>0</b>	<b>13,000</b>	<b>108,260</b>	<b>0</b>	<b>0</b>	<b>0</b>
Midlands	Severn	Teme	0	0	0	20,000	0	10379
		Tanat	0	0	0	2,465	0	0
		Clun	0	0	0	0	0	1,000
		Rea	0	0	0	10,000	0	1500
		Leadon	0	0	0	0	0	2370
	Trent	Dove	0	0	0	130,000	0	0
		Dove (River Churnet)	0	0	0	30,000	0	0
	<b>Total</b>		<b>0</b>	<b>0</b>	<b>0</b>	<b>192,465</b>	<b>0</b>	<b>14,249</b>
Environment Agency Wales	Taff		0	0	1,800	90,000	0	0
	Ely		0	0	0	0	0	0
	Ebbw		0	0	0	0	0	0
	Teifi		0	0	0	0	8000	0
	Afan		0	0	0	0	5,000	0
	Taf		0	0	0	0	4,000	0
	Wye	Main river	0	0	200	0	0	8000
	Tywi	Main river + Cothi and Gwili	0	0	0	0	14,000	6,250
	Eastern Cleddau		0	0	0	0	0	13470
	Rheidol		0	0	0	0	0	0
	Conwy	Main river, Lledr + Llugwy	0	0	21,500	8,000	0	0
	Mawddach	Main river, Eden and Wnion	0	0	13,000	5,000	4,000	0
	Dee	Main river (plus var. tribs.)	0	0	79,500	4,057	24,111	0
		<b>Total</b>		<b>0</b>	<b>0</b>	<b>116,000</b>	<b>107,057</b>	<b>59,111</b>
North West	Ribble	Hodder	0	0	0	12500	0	0
	Leven		0	0	0	0	0	0
	Lune	Main River (plus var. tribs.)	4500	0	0	0	0	0
	<b>Total</b>		<b>4,500</b>	<b>0</b>	<b>0</b>	<b>12,500</b>	<b>0</b>	<b>0</b>
<b>England and Wales</b>			<b>4,500</b>	<b>22,913</b>	<b>324,260</b>	<b>750,389</b>	<b>169,853</b>	<b>51,412</b>

Notes:  
 1+ Parr are those stocked out on or after 1st January in the year after they hatched.  
 1+ Smolts are those stocked out on or after 1st January in the 1st year after they hatched.  
 2+ Smolts are those stocked out on or after 1st January in the 2nd year after they hatched.

**Section 6**  
**Table 22**

**Sea Trout Stocking – number of eggs, fry, parr and smolts released - 2010**

Environment			Unfed	Fed	0+	1+	1+	2+
Agency Region	River	Tributary	Ova	Fry	Fry	Parr	Parr	Smolts
South West	Axe	Main River + Kit Brook	0	7,000	10,000	7,000	0	0
	<b>Total</b>		<b>0</b>	<b>7,000</b>	<b>10,000</b>	<b>7,000</b>	<b>0</b>	<b>0</b>
Environment	Taff		0	0	0	0	0	0
	Ogmore		0	0	0	10,000	0	0
Agency	Ebbw		0	0	0	0	0	0
	Tywi	Main river + Cothi and Gwili	0	0	0	10,000	6,000	0
Wales	Mawddach	Main river, Eden and Wnion	0		6,000	0	13,000	0
	<b>Total</b>		<b>0</b>	<b>0</b>	<b>6,000</b>	<b>20,000</b>	<b>19,000</b>	<b>0</b>
North West	Ribble	Hodder	0	0	0	2000	0	0
	Lune	Main River (plus var. tribs.)	0	0	0	1,000	0	0
	<b>Total</b>		<b>0</b>	<b>0</b>	<b>0</b>	<b>3,000</b>	<b>0</b>	<b>0</b>
England and Wales			0	7,000	16,000	30,000	19,000	0
<p>Notes:</p> <p>1+ Parr are those stocked out on or after 1st January in the year after they hatched.</p> <p>1+ Smolts are those stocked out on or after 1st January in the 1st year after they hatched.</p> <p>2+ Smolts are those stocked out on or after 1st January in the 2nd year after they hatched.</p>								



## 7. REFERENCES

ANON, 2010. *Annual Assessment of Salmon Stocks and Fisheries in England and Wales, 2010* (preliminary assessment for ICES, April 2009) Cefas/EA:97 pp. ISBN: 978 0 907545 71 2.

RUSSELL, I.C., IVES, M.J., POTTER, E.C.E., BUCKLEY, A.A. and DUCKETT, L., 1995. *Salmon and migratory trout statistics for England and Wales, 1951-1990*. Fisheries Research Data Report (38):252 pp.

ENVIRONMENT AGENCY, 2009. *Salmonid and Freshwater Fisheries Statistics for England and Wales 2008*.

## 8. GLOSSARY

Cefas	The Centre for Environment, Fisheries & Aquaculture Science
EIFAC	European Inland Fisheries Advisory Commission
Grilse	Salmon that has spent not more than one winter at sea before maturing, also known as 1 sea winter (1SW) fish
ICES	International Council for the Exploration of the Seas
Migratory trout	Sea trout, referred to as sewin in Wales. Migratory form of trout <u>Salmo trutta</u> (L.)
MSW	Multi-Sea-Winter; a salmon that has spent two or more winters at sea before maturing
NASCO	North Atlantic Salmon Conservation Organisation
Nets	Instruments other than rod and line (including nets and fixed engines such as cribbs, putts, putchers, baulks, fishing weirs and traps as used for the capture of migratory salmonids)
NLO	Net Limitation Order

The Environment Agency is the leading public body protecting and improving the environment in England and Wales.

It's our job to make sure that air, land and water are looked after by everyone in today's society, so that tomorrow's generations inherit a cleaner, healthier world.

Our work includes tackling flooding and pollution incidents, reducing industry's impacts on the environment, cleaning up rivers, coastal waters and contaminated land, and improving wildlife habitats.

This report is the result of research commissioned and funded by the Environment Agency.

**Published by:**

Environment Agency  
Horizon House. Deanery Road,  
Bristol, BS1 5AH  
Tel: 03708 506506  
Email: [enquiries@environment-agency.gov.uk](mailto:enquiries@environment-agency.gov.uk)  
Website: [www.environment-agency.gov.uk](http://www.environment-agency.gov.uk)

**Author(s):**

Andy Sadler, Melinda Twigg

**Dissemination Status:**

Publicly available

**Keywords:**

Fisheries statistics, Salmon, Sea trout, eel

**Product Code:**

Awaiting Product Code

© Environment Agency – March 2012

All rights reserved. This document may be reproduced with prior permission of the Environment Agency.

The views and statements expressed in this report are those of the author alone. The views or statements expressed in this publication do not necessarily represent the views of the Environment Agency and the Environment Agency cannot accept any responsibility for such views or statements.

Hard copies from the Environment Agency are printed 100% recycled stock.

Further copies of this report are available from our publications catalogue: <http://publications.environment-agency.gov.uk> or our National Customer Contact Centre: T: 03708 506506  
E: [enquiries@environment-agency.gov.uk](mailto:enquiries@environment-agency.gov.uk).