



fisheries statistics report 2008

Salmonid and freshwater fisheries statistics for England and Wales, 2008

(Declared catches of salmon and sea trout by rods, nets and other instruments)

We are the Environment Agency. It's our job to look after your environment and make it **a better place** – for you, and for future generations.

Your environment is the air you breathe, the water you drink and the ground you walk on. Working with business, Government and society as a whole, we are making your environment cleaner and healthier.

The Environment Agency. Out there, making your environment a better place.

Published by:

Environment Agency
Rio House
Waterside Drive, Aztec West
Almondsbury, Bristol BS32 4UD
Tel: 0870 8506506
Email: enquiries@environment-agency.gov.uk
www.environment-agency.gov.uk

© Environment Agency

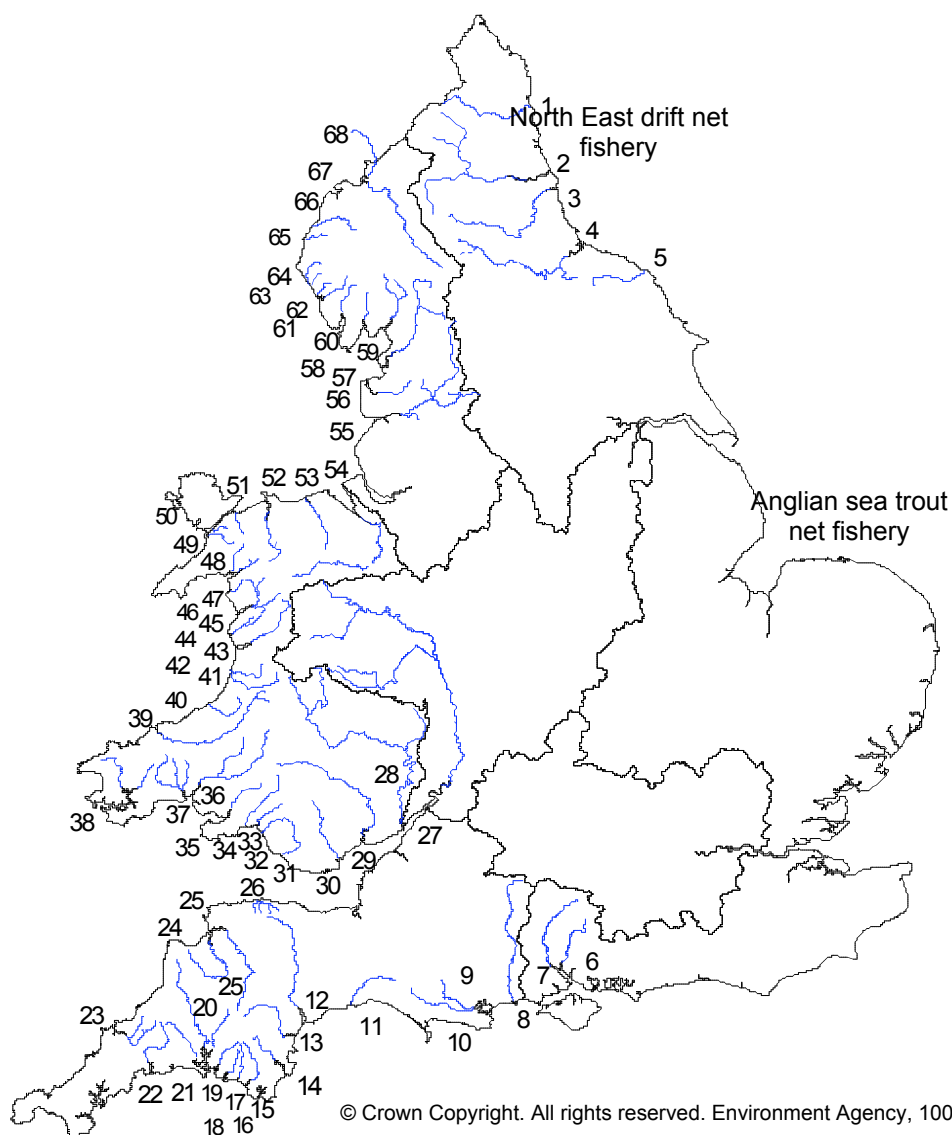
All rights reserved. This document may be reproduced with prior permission of the Environment Agency.
November 2009.

Salmonid and freshwater fisheries statistics for England and Wales, 2008

(Declared catches of salmon and sea trout by rods, nets and other instruments)

This report, prepared by the Environment Agency, is one of a long-term series. It contributes to our objectives of communicating our fisheries monitoring programme.

Major salmon and sea trout rivers and fisheries in England and Wales



Key:

| | | | | | |
|-------------------|-------------------|-----------------|-------------|------------|-------------------|
| North East | South West | 22 Fowey | 33 Neath | 48 Glaslyn | North West |
| 1 Coquet | 8 Avon (Hants) | 23 Camel | 34 Tawe | 49 Gwyrfai | 55 Ribble |
| 2 Tyne | 9 Piddle | 24 Torridge | 35 Loughor | 50 Seiont | 56 Wyre |
| 3 Wear | 10 Frome | 25 Taw | 36 Tywi | 51 Ogwen | 57 Lune |
| 4 Tees | 11 Axe | 26 Lyn | 37 Taf | 52 Conwy | 58 Kent |
| 5 Esk (Yorks) | 12 Exe | | 38 Cleddau | 53 Clwyd | 59 Leven |
| | 13 Teign | Midlands | 39 Teifi | 54 Dee | 60 Crake |
| Southern | 14 Dart | 27 Severn | 40 Aeron | | 61 Duddon |
| 6 Itchen | 15 Avon (Devon) | | 41 Ystwyth | | 62 Esk (Cumbrian) |
| 7 Test | 16 Erme | Wales | 42 Rheidol | | 63 Irt |
| | 17 Yealm | 28 Wye | 43 Dyfi | | 64 Ehen |
| | 18 Plym | 29 Usk | 44 Dysynni | | 65 Derwent |
| | 19 Tavy | 30 Taff | 45 Mawddach | | 66 Ellen |
| | 20 Tamar | 31 Ogmore | 46 Artro | | 67 Eden |
| | 21 Lynher | 32 Afan | 47 Dwyryd | | 68 Esk (Border) |

Contents

| | | |
|-----------|---|---|
| 1. | Introduction | 4 |
| 2. | The Environment Agency and its Regions | 4 |
| 3. | Rod and net licence catch returns | 4 |
| 4. | National overview and summary of main findings | 5 |
| | Table 1 | Summary of declared salmon and sea trout catches, England & Wales (2008, 2007 and 5-year mean) |
| | Table 2 | Summary of total salmon and sea trout net and fixed engine catches and weights (2008) |
| | Table 3 | Summary of total salmon and sea trout catches and weights (2008) |
| | Figure 1 | Number of net licences issued (1985-2008) and number of days declared fished by salmon and sea trout rod licence holders (1994-2008), England & Wales |
| | Figure 2 | Total salmon net catches for England & Wales (1956-2008) |
| | Figure 3 | Total salmon rod catches for England & Wales (1956-2008) |
| | Figure 4 | Total sea trout net catches for England & Wales (1978-2008) |
| | Figure 5 | Total sea trout rod catches for England & Wales (1978-2008) |
| 5. | Regional Catch Summaries | 10 |
| | Table 4 | Summary of salmon net catches by Region (2008, 2007 and 5-year mean) |
| | Table 5 | Summary of sea trout net catches by Region (2008, 2007 and 5-year mean) |
| | Table 6 | Summary of salmon rod catches by Region (2008, 2007 and 5-year mean) |
| | Table 7 | Summary of sea trout rod catches by Region (2008, 2007 and 5-year mean) |
| | Figure 6 | Salmon and sea trout net catches by Region (2008) |
| | Figure 7 | Salmon and sea trout rod catches by Region (2008) |
| 6. | Description of data tables 1 to 20 | 12 |
| | Data tables (1 to 20) | 13 |
| 7. | References | 35 |
| 8. | Glossary | 35 |

Section 1

Introduction

This report is the Environment Agency's fourteenth collation of salmon and sea trout catch statistics for England and Wales. From 1989 to 1994, these statistics were published by the National Rivers Authority (NRA). The Ministry of Agriculture, Fisheries and Food, Directorate of Fisheries Research also included them in its Data Report series between 1983 and 1988.

This report is a reference document of declared salmonid catches in England and Wales.

Salmon stock assessment data (including provisional catches and run estimates) are published in an

annual assessment for the International Council for the Exploration of the Seas (ICES). The twelfth report in this series was published jointly by the Environment Agency and the Centre for Environment, Fisheries & Aquaculture Science (Cefas) in April 2009 (www.environment-agency.gov.uk/fish).

The catch data recorded here represent declared catches only. This document is therefore not an entirely accurate record of the total numbers of fish landed. Furthermore, the relationship between catch and stock size is not always straight forward, regardless of the accuracy of the catch data. Great care must be taken therefore in interpreting these data.

Section 2

The Environment Agency and its regions

The Environment Agency is a non-departmental public body established by the Environment Act 1995. It has taken over the functions of its predecessors, the National Rivers Authority, Her Majesty's Inspectorate of Pollution, Waste Regulation Authorities and some parts of the Department of the Environment.

The Environment Agency came into effect on 1 April 1996. There are eight Environment Agency Regions: North East, Anglian, Thames, Southern, South West, Midlands, Environment Agency Wales and North West.

Section 3

Rod and net licence catch returns

Salmon and sea trout rod licence holders are legally required to submit a full and accurate catch return to the Agency by 1 January in the following year. Commercial net and fixed engine licence holders must submit their returns within seven days of the end of each month during the fishing season.

In November 2008, for the fourteenth consecutive year, the Environment Agency sent a reminder to all holders of a salmon and sea trout rod licence to declare their catch returns. The timing of the reminder coincided with the end of most fishing seasons. As in years

1994-2007, the effect of this reminder was marked compared with 1992 and 1993 returns, when no reminders were sent.

In an attempt to further improve reporting rates, the Environment Agency now also routinely issues second reminders to anglers who fail to submit a return in response to the first reminder. These were issued in January 2009. We believe that the returns published here record approximately 90 per cent of all migratory salmonids caught in England and Wales.

Section 4

National overview and summary of main findings

Table 1. Summary of declared salmon and sea trout rod and net catches for England & Wales in 2008 showing % change on 2006 and the 5-year mean (2004-2007).

| | 2008 | 2007 | 5-yr. mean (2003-2007) | % change (+/-) | |
|------------------------------------|---------------|---------------|---------------------------|----------------|-----------------------|
| | | | | 2008 on 2007 | 2008 on 5-yr. mean |
| RODS | | | | | |
| *Licences issued | 33,900 | 32,231 | 32,121 | + 5% | + 5.5% |
| *Days declared fished | 171,033 | 164,679 | 172,863 | | |
| Salmon caught | 23,512 | 20,019 | 19,953 | +18% | + 18% |
| Salmon released (% released) | 13,035 55% | 10,948 55% | 10,698 54% | + 19% | + 22% |
| Sea trout caught | 27,707 | 29,398 | 35,037 | - 6% | - 21% |
| Sea trout released (% released) | 16,219 59% | 16,776 57% | 19,745 56% | | |
| NETS | | | | | |
| Licences issued | 333 | 357 | 383 | - 7% | - 14% |
| Salmon caught | 8,849 | 10,922 | 15,022 | - 19% | - 41% |
| Sea trout caught | 27,974 | 20,351 | 24,879 | + 37% | + 12% |

* Salmon and sea trout licences only

- River flows in 2008 were above average in the summer and early autumn, the peak months for angling. Conditions for salmon and sea trout were variable but overall were good for angling in many catchments.
- The number of salmon and sea trout rod licences issued in 2008 (33,900) increased by 5% compared with 2007, and by 5.5% compared with the mean of the previous five years (2003-2007).
- The total declared salmon rod catch in 2008 (23,512) increased by 18% compared with 2007, an increase of 18% was also seen when compared with the 5- year mean (19,953).
- The salmon net catch in 2008 (8798) decreased by 19% compared with the previous year and by 41% compared with the 5-year mean (15,022). The North East drift net catch has reduced significantly since the introduction of the buy-out in 2003 (from a catch of 27,685 recorded by 69 fishermen in 2002 to a catch of 3,649 reported by 16 drift netsmen in 2008, a reduction of 87%).
- A total of 333 salmon and sea trout commercial net licences were issued in 2008. This compares with 357 in 2007 and a 5-year mean of 383. Since 1985 there has been a 68% reduction in the number of net licences issued annually in England and Wales (from 1,026 to 331).

Section 4

- A total of 27,974 sea trout were declared caught by the net fisheries in 2008, an increase of 37% compared with the 2007 catch and an increase of 12% compared with the 5-year mean. The North East drift net sea trout catch has decreased by 77% since the 2003 buy-out (from 15,242 in 2002 to 3,544 in 2008).
- The average weight of net caught salmon in 2008 was as it was in 2007 at 3.5 kg. This compares with an average weight of 3.8 kg for rod caught salmon (down slightly from 4kg in 2007).
- The average weight of net and rod caught sea trout in 2008 was 1.85 kg and 1kg respectively). Byelaws regulating mesh size result in the capture of fewer small sea trout by most net fisheries.
- Catch and Release rates for rod caught salmon (55%) and sea trout (59%) in 2008 were identical to those recorded in 2007 for salmon but had increased slightly for sea trout. Byelaws, incentive schemes and angler awareness has resulted in a dramatic increase in release over the past ten years. In 1993 just 8% of rod caught salmon were released following capture
- The declared rod catch of sea trout in 2008 (27,707) decreased by 6% compared with 2007 (29,398) and by 21% compared with the 5-year mean (35,037).
- Net fisheries exempted from the 'spring' byelaws released a total of 17 salmon before 1 June in 2008 (8 by the Teign and Dart seine nets in South West Region, and nine by the Tywi coracles). All salmon caught by Avon and Poole netsmen were returned (71 in total).
- The river with the highest declared rod catch of salmon in 2008 was the Tyne (3,389) followed by the Eden (1,571), the Lune (1,374), the Ribble (1,372), the Derwent (1,289) and the Usk (1,157). 15% of the total England and Wales rod catch of salmon was recorded on the Tyne in 2006.
- The river with the highest declared rod catch of sea trout in 2008 was the Tywi (2,570) followed by the Wear (2,080), the Tyne (2,036), the Teifi (1,746), the Esk (Boarder) (1,221) and the Dyfi (1,215).
- The most successful method for salmon anglers in 2008 was spinning, accounting for 47% of the catch, followed by fly (36%) and bait (15%). 46% of the total sea trout rod catch was taken on fly, 37% on spinner and 16% on bait (2% method not recorded).

Section 4

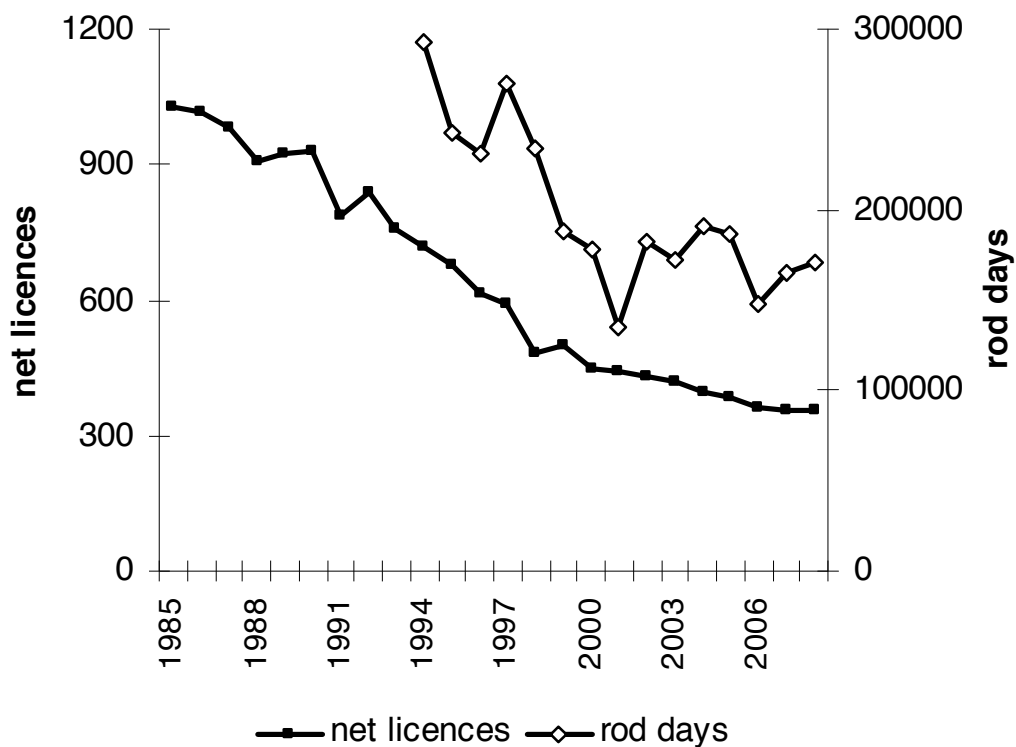
Table 2. Summary of total salmon and sea trout net and fixed engine catches and weights, 2008

| | Salmon | | Sea trout | |
|----------|--------|-------------|-----------|-------------|
| | Number | Weight (t.) | Number | Weight (t.) |
| Caught | 8,849 | 30.5 | 27,974 | 51.5 |
| Retained | 8761 | 30.2 | 27,020 | 51.5 |
| Released | 88 | 0.3 | 0 | 0 |

Table 3. Summary of total salmon and sea trout rod catches and weights, 2008

| | Salmon | | Sea trout | |
|----------|--------|-------------|-----------|-------------|
| | Number | Weight (t.) | Number | Weight (t.) |
| Caught | 23512 | 94 | 27707 | 29.3 |
| Retained | 10477 | 41.9 | 11488 | 12.1 |
| Released | 13035 | 52.1 | 16219 | 17.2 |

Figure 1. Number of net and fixed engine licences issued (1985-2008) and total number of days fished by salmon and sea trout rod licence holders (1994-2008), England & Wales.



Section 4

Figure 2. Total declared salmon net and fixed engine catch for England & Wales, 1956-2008 (shaded area indicates the catch for the North East Coast fishery).

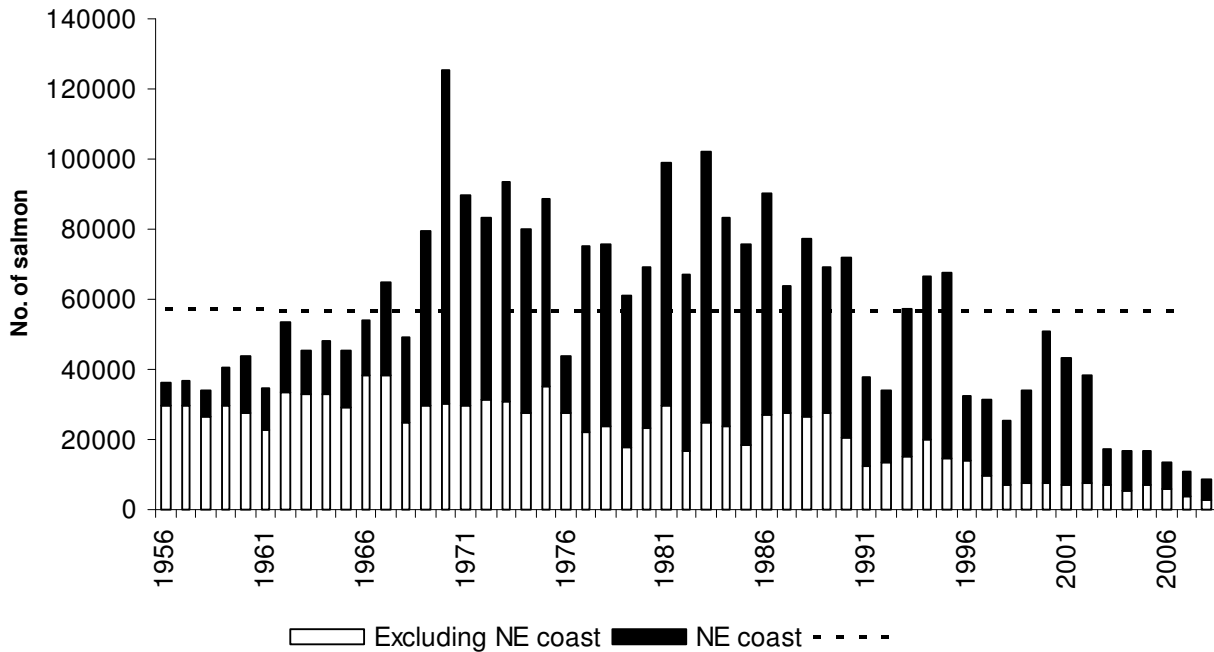
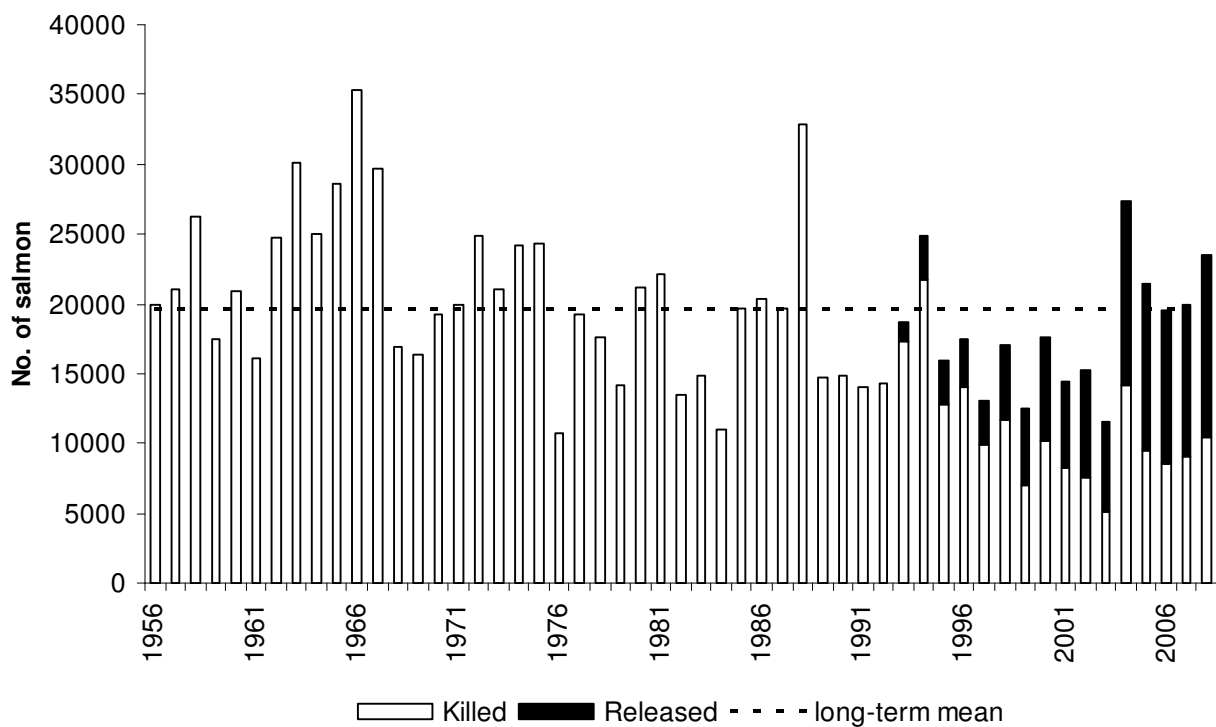


Figure 3. Total declared salmon rod catch for England & Wales, 1956-2008 (shaded area indicates fish caught and released).



Section 4

Figure 4. Total declared sea trout net and fixed engine catch for England & Wales, 1978-2008 (shaded area indicates the catch for the North East coast fishery).

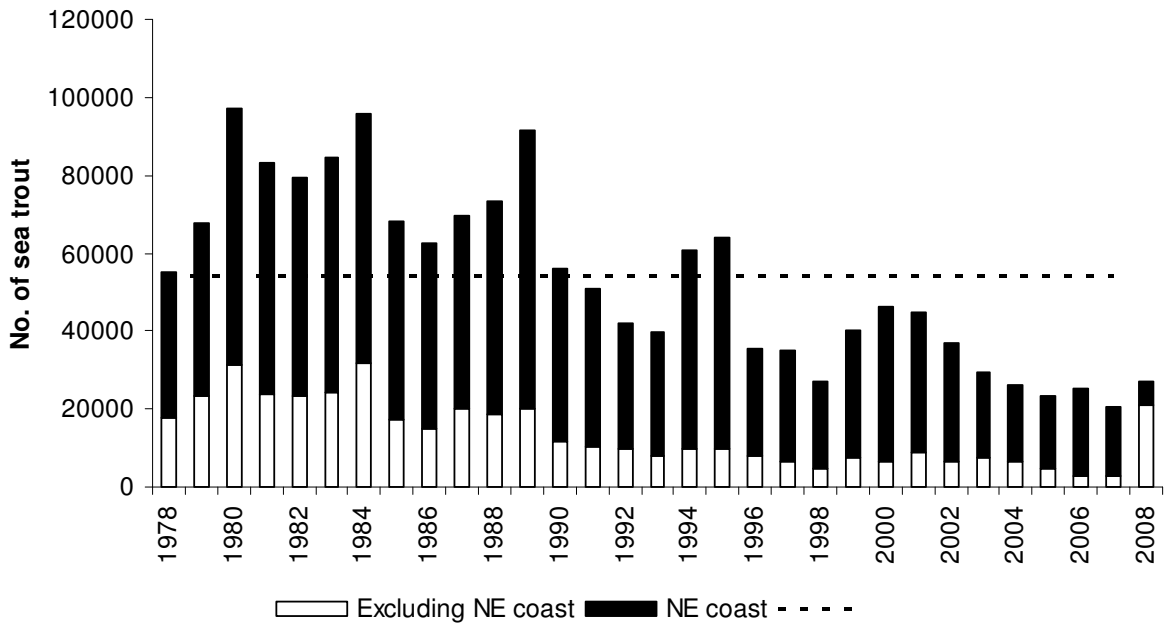
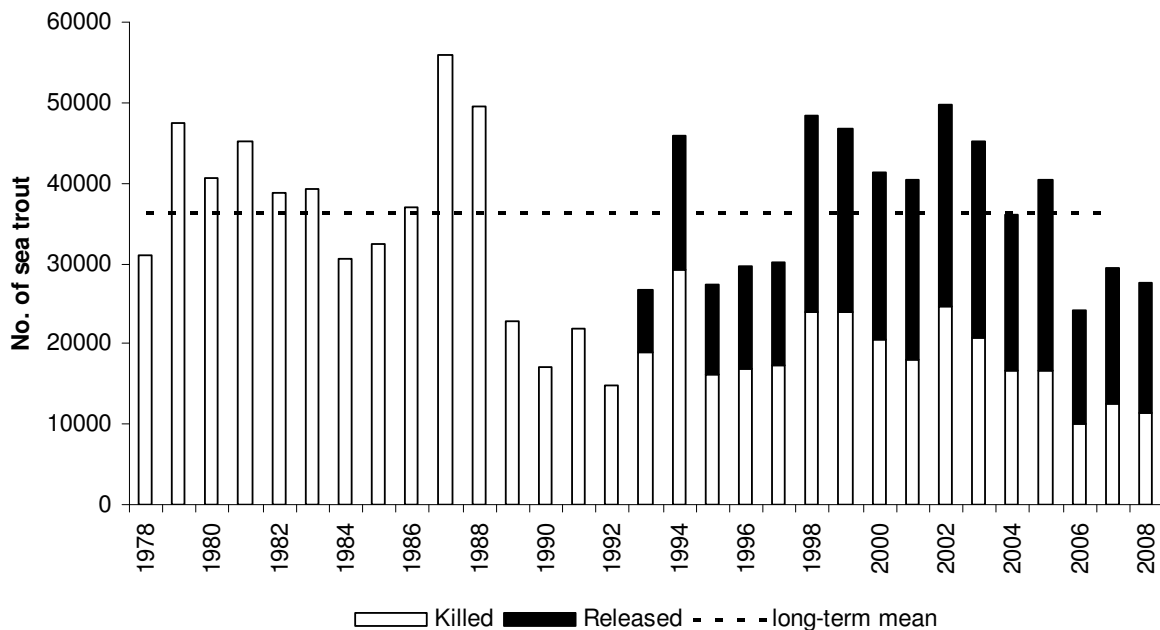


Figure 5. Total declared sea trout rod catch for England & Wales, 1978-2008 (shaded area indicates fish caught and released).



Section 5

Regional catch summaries (2008, 2007 and 5-year mean)

Table 4. Summary of salmon net and fixed engine catches by Region

| | 2008 | 2007 | 5-year mean (2003-2007) | % change (+/-) 2008 on 2007 | % change (+/-) 2008 on 5-yr mean |
|------------|-------|-------|----------------------------|--------------------------------|-------------------------------------|
| North East | 6,241 | 7,091 | 9019 | - 13% | - 31% |
| Anglian | 9 | 7 | 23 | + 29% | - 61% |
| Thames | - | - | - | - | - |
| Southern | - | - | - | - | - |
| South West | 587 | 211 | 780 | +189% | - 25% |
| Midlands | 871 | 676 | 957 | + 29% | - 9% |
| EA Wales | 160 | 613 | 872 | -74% | - 82% |
| North West | 981 | 2324 | 3351 | - 78% | - 71% |

Table 5. Summary of sea trout net and fixed engine catches by Region

| | 2008 | 2007 | 5-year mean (2002-2006) | % change (+/-) 2008 on 2007 | % change (+/-) 2008 on 5-yr mean |
|------------|--------|--------|----------------------------|--------------------------------|-------------------------------------|
| North East | 24,865 | 17,566 | 19,693 | + 36% | + 21% |
| Anglian | 714 | 852 | 1,319 | - 16% | - 96% |
| Thames | - | - | - | - | - |
| Southern | 0 | 2 | 8 | - | - |
| South West | 694 | 582 | 1319 | + 19% | - 47% |
| Midlands | - | - | - | - | - |
| EA Wales | 1022 | 936 | 1412 | + 9% | - 28% |
| North West | 679 | 413 | 992 | + 64% | - 32% |

Table 6. Summary of salmon rod catches by Region

| | 2008 | 2007 | 5-year mean (2003-2007) | % change (+/-) 2008 on 2007 | % change (+/-) 2008 on 5-yr mean |
|------------|-------|-------|----------------------------|--------------------------------|-------------------------------------|
| North East | 5,634 | 4,872 | 5375 | + 16% | + 5% |
| Anglian | - | - | - | - | - |
| Thames | 0 | 0 | 0 | - | - |
| Southern | 711 | 466 | 414 | + 53% | + 72% |
| South West | 2,686 | 2,071 | 1,933 | + 30% | + 39% |
| Midlands | 294 | 280 | 344 | + 5% | - 15% |
| EA Wales | 6,122 | 5,136 | 4,636 | + 19% | + 32% |
| North West | 8,065 | 7,151 | 7,187 | + 13% | +12% |

Section 5

Table 7. Summary of sea trout rod catches by Region

| | 2008 | 2007 | 5-year mean (2003-2007) | % change (+/-) 2008 on 2007 | % change (+/-) 2008 on 5-yr mean |
|------------|--------|--------|-------------------------|-----------------------------|----------------------------------|
| North East | 5,323 | 4,172 | 5,375 | + 28% | - 1% |
| Anglian | - | - | - | - | - |
| Thames | 0 | 8 | 2 | - 100% | - 100% |
| Southern | 495 | 452 | 745 | + 10% | - 34% |
| South West | 4,353 | 4,259 | 6,411 | + 2% | - 32% |
| Midlands | 25 | 32 | 35 | - 22% | - 29% |
| EA Wales | 12,970 | 15,290 | 17,399 | - 15% | - 25% |
| North West | 4,541 | 5,182 | 5,961 | - 12% | - 24% |

Figure 6. Declared salmon and sea trout net and fixed engine catches by Region, 2008.

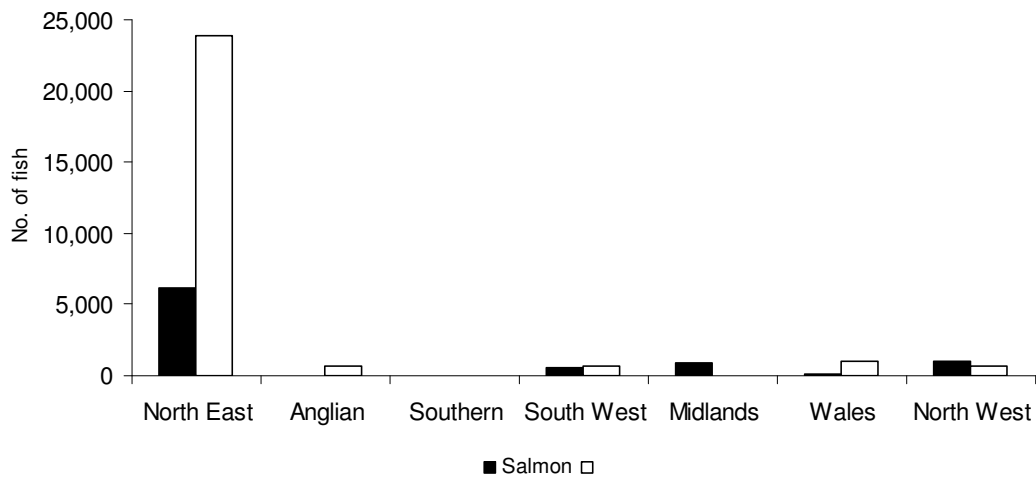
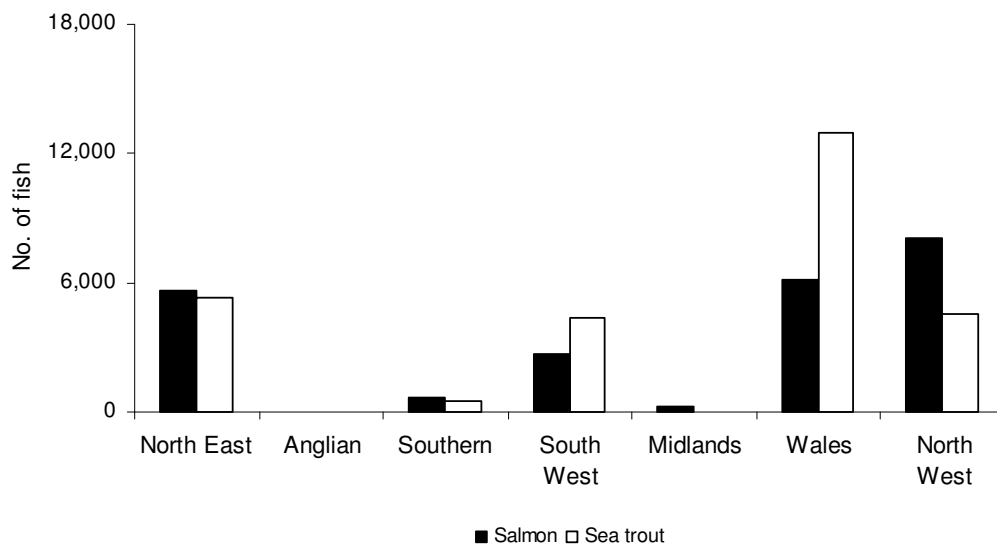


Figure 7. Declared salmon and sea trout rod catches by Region, 2008.



Section 6

Tables

| | | | |
|----------|---|----------|---|
| Table 1 | Salmon and sea trout net and fixed engine fishing licences – number and value - 2008 season | Table 12 | Rod caught sea trout weight splits (lb and kg) – 2008 season |
| Table 2 | Eel and elver net licence sales and catches – 2008 season | Table 13 | Summary of salmon net catches, 1998 – 2008 |
| Table 3 | National rod-fishing licences – number and value, valid from 1 April 2008 to 31 March 2009 | Table 14 | Summary of sea trout net catches, 1998 – 2008 |
| Table 4 | Net seasons and weekly closure times – salmon and sea trout – 2008 season | Table 15 | Summary of reported salmon rod catches, 1998 – 2008 |
| Table 5 | Rod fishing seasons for salmon and sea trout – including method restrictions and bag limits - 2008 season | Table 16 | Summary of reported sea trout rod catches, 1998 – 2008 |
| Table 6 | Salmon net catches – 2008 season | Table 17 | Reported net effort data for salmon and sea trout – 2008 season |
| Table 7 | Sea trout net catches – 2008 season | Table 18 | Reported rod effort data for salmon and sea trout – 2008 season |
| Table 8 | Salmon rod catches – 2008 season | Table 19 | Estimated proportions of grilse and multi-sea-winter salmon in declared rod catch – 2008 season |
| Table 9 | Sea trout rod catches – 2008 season | Table 20 | Salmon stocking – numbers of eggs, fry, parr and smolts released – 2008 |
| Table 10 | Average weights (kg) rod caught salmon and sea trout – 2008 season | | |
| Table 11 | Rod caught salmon weight splits (lb and kg) – 2008 season | | |

Table 1 NET FISHING LICENCES - number and value, 2008 season

| Environment Agency Region | Fishing Method | Number (a) | Duty (£) | No. endorsees | Value (£) (b) | |
|--|---|--------------|-------------|---------------|-------------------|------------------|
| North East Northumbria Area | Coastal (N) drift and T nets | 5 | 1238.00 | 27 | 6195.40 | |
| | Coastal (N) drift nets | 9 | 1137.00 | 0 | 10233.00 | |
| | Coastal (N) T nets | 21 | 794.00 | 55 | 16685.00 | |
| | Coastal (S) drift nets | 0 | 1137.00 | 0 | 0.00 | |
| | Coastal (S) T nets | 1 | 794.00 | 1 | 794.20 | |
| | Total | | 36 | | 83 | 33,907.60 |
| North East Yorkshire Area | Coastal drift nets | 2 | 890.00 | 3 | 1780.60 | |
| | Coastal T or J nets | 31 | 794.00 | 65 | 24627.00 | |
| | Total | 33 | | 68 | 26,407.60 | |
| Anglian | Drift nets | 25 | 74.00 | 65 | 1863.00 | |
| | Other nets (various) | 8 | 74.00 | 12 | 594.40 | |
| | Total | 33 | | 77 | 2,457.40 | |
| Southern | Seine nets | 1 | 74.00 | 0 | 74.00 | |
| | Total | 1 | | 0 | 74.00 | |
| South West Wessex Area | Seine nets | 5 | 359.00 | 13 | 1797.60 | |
| | Dip nets | 0 | | 0 | 0.00 | |
| | Putcher ranks 50 Putchers (1 units of 50) | 0 | | 0 | 0.00 | |
| | Total | 5 | | 13 | 1,797.60 | |
| South West Devon & Cornwall | Seine nets (single river) | 14 | 323.00 | 43 | 4530.60 | |
| | Seine nets (double river) | 0 | | 0 | 0.00 | |
| | Fixed Engine (Weir) Avon | 0 | | 0 | 0.00 | |
| | Fixed Engine (Trap) Lyn | 0 | | 0 | 0.00 | |
| | Drift nets (Camel) | 6 | 296.00 | 0 | 1776.00 | |
| | Total | 20 | | 43 | 6,306.60 | |
| Midlands | Lave nets (half season) | 24 | 57.00 | 0 | 1368.00 | |
| | Seine nets | 3 | 269.00 | 0 | 807.00 | |
| | Fixed Engine ranks comprising: 1200 Putchers (24 units of 50) | 5 | 74.00 | 14 | 2.80 | |
| | Putt (1 fixed engine) | 0 | | | 0.00 | |
| | Stop net (boat) | 0 | | | | |
| | Topping net (R.Trent) | 0 | | | | |
| | Draft net (R. Trent) | 0 | | | 0.00 | |
| | Total | 32 | | 14 | 3,905.80 | |
| | Environment Agency Wales | Compass nets | 6 | 91.00 | 9 | 547.80 |
| | | Coracle nets | 21 | Var. | 60 | 7027.00 |
| Wade nets | | 1 | 74.00 | 2 | 74.40 | |
| Seine nets | | 19 | Var. | 99 | 8787.00 | |
| Drift nets (incl. sling nets) | | | | | 0.00 | |
| Trammel nets | | 0 | 549.00 | 0 | 0.00 | |
| Lave nets | | 7 | 74.00 | 0 | 518.00 | |
| Putcher rank (0 units of 50) | | 0 | | | | |
| Fish trap-basket | | 1 | 124.00 | 1 | 124.20 | |
| Total | | 55 | | 171 | 17,078.40 | |
| North West | Haaf nets (Solway) | 79 | 135.00 | 17 | 10668.40 | |
| | Drift nets (Cumbria Coastal) | | | | 0.00 | |
| | Drift nets (Ribble) | 6 | 400.00 | 21 | 2404.20 | |
| | Haaf nets (Lune) | 11 | 269.00 | 2 | 2959.40 | |
| | Drift nets (Lune) | 7 | 549.00 | 11 | 3845.20 | |
| | Seine net (Lune) | 1 | 495.00 | 5 | 496.00 | |
| | Lave nets (Kent) | 6 | 135.00 | 0 | 810.00 | |
| | Lave nets (Leven) | 3 | 135.00 | 0 | 405.00 | |
| | Coop nets (Eden) | 3 | 346.00 | 0 | 1038.00 | |
| | Total | 116 | | 56 | 22,626.20 | |
| England & Wales | Total | 331 | | 525 | 114,561.20 | |
| Key: (a) Numbers represent the number of licensees, except for data in parentheses which represent numbers of licensed components on which duty is paid. (b) Value includes endorsee fees (@ £0.20 each). | | | | | | |

Table 2 Eel and elver licence sales and catches, 2008 season

| Environment Agency Region | Eel - LICENCES | | | | Eel and elver - CATCHES (Kg) | | | |
|---------------------------|---------------------------------|------------|----------|------------------|---------------------------------|------------|---------------|--------------|
| | Method | Number (a) | Duty (£) | Value (£) | Method | Elver | Yellow Eel | Silver eel |
| North East | Small wingless traps (group 10) | 8 | 11.00 | 88.00 | Small wingless traps (group 10) | 0 | 157 | 236 |
| | Fyke nets | 6 | 5.00 | 30.00 | Fyke nets | 0 | 176 | 184 |
| | Gloucester wing net | 0 | | 0.00 | Gloucester wing net | 0 | 0 | 0 |
| | Fixed trap | 0 | | 0.00 | Fixed trap | 0 | 0 | 0 |
| | Elver dip net | 0 | | 0.00 | Elver dip net | 0 | 0 | 0 |
| | Eel trawl net | 0 | | 0.00 | Eel trawl net | 0 | 0 | 0 |
| | Total | 14 | | 118.00 | Total | 0 | 333 | 420 |
| Anglian | Small wingless traps (group 10) | 17 | 11.00 | 187.00 | Small wingless traps (group 10) | 0 | 2249 | 1 |
| | Fyke nets | 35 | 5.00 | 175.00 | Fyke nets | 0 | 7655 | 1973 |
| | Gloucester wing net | 0 | | 0.00 | Gloucester wing net | 0 | 0 | 0 |
| | Fixed trap | 0 | | 0.00 | Fixed trap | 0 | 0 | 0 |
| | Elver dip net | 0 | | 0.00 | Elver dip net | 0 | 0 | 0 |
| | Eel trawl net | 0 | | 0.00 | Eel trawl net | 0 | 0 | 0 |
| | Total | 52 | | 362.00 | Total | 0 | 9903 | 1974 |
| Thames | Small wingless traps (group 10) | 5 | 11.00 | 55.00 | Small wingless traps (group 10) | 0 | 0 | 0 |
| | Fyke nets | 18 | 5.00 | 90.00 | Fyke nets | 0 | 5548 | 398 |
| | Gloucester wing net | 0 | | 0.00 | Gloucester wing net | 0 | 0 | 0 |
| | Fixed trap | 0 | | 0.00 | Fixed trap | 0 | 0 | 0 |
| | Elver dip net | 0 | | 0.00 | Elver dip net | 0 | 0 | 0 |
| | Eel trawl net | 0 | | 0.00 | Eel trawl net | 0 | 0 | 0 |
| | Total | 23 | | 145.00 | Total | 0 | 5548 | 398 |
| Southern | Small wingless traps (group 10) | 10 | 11.00 | 110.00 | Small wingless traps (group 10) | 0 | 180 | 8 |
| | Fyke nets | 26 | 5.00 | 130.00 | Fyke nets | 0 | 417 | 208 |
| | Gloucester wing net | 0 | | 0.00 | Gloucester wing net | 0 | 0 | 0 |
| | Fixed trap | 5 | 106.00 | 530.00 | Fixed trap | 0 | 5 | 1440 |
| | Elver dip net | 0 | | 0.00 | Elver dip net | 0 | 0 | 0 |
| | Eel trawl net | 0 | | 0.00 | Eel trawl net | 0 | 0 | 0 |
| | Total | 41 | | 770.00 | Total | 0 | 602 | 1656 |
| South West | Small wingless traps (group 10) | 7 | 11.00 | 77.00 | Small wingless traps (group 10) | 0 | 3 | 0 |
| | Fyke nets | 15 | 5.00 | 75.00 | Fyke nets | 0 | 6623 | 414 |
| | Gloucester wing net | 0 | | 0.00 | Gloucester wing net | 0 | 0 | 0 |
| | Fixed trap | 6 | 106.00 | 636.00 | Fixed trap | 0 | 24 | 155 |
| | Elver dip net | 174 | 69.00 | 12006.00 | Elver dip net | 349 | 0 | 0 |
| | Eel trawl net | 0 | | 0.00 | Eel trawl net | 0 | 0 | 0 |
| | Total | 202 | | 12,794.00 | Total | 349 | 6650 | 569 |
| Midlands | Small wingless traps (group 10) | 7 | 11.00 | 77.00 | Small wingless traps (group 10) | 0 | 112 | 1 |
| | Fyke nets | 6 | 5.00 | 30.00 | Fyke nets | 0 | 984 | 534 |
| | Gloucester wing net | 0 | | 0.00 | Gloucester wing net | 0 | 0 | 0 |
| | Fixed trap | 1 | | 106.00 | Fixed trap | 0 | 0 | 0 |
| | Elver dip net | 333 | 69.00 | 22977.00 | Elver dip net | 274 | 0 | 0 |
| | Eel trawl net | 0 | | 0.00 | Eel trawl net | 0 | 0 | 0 |
| | Total | 347 | | 23,190.00 | Total | 274 | 1096 | 535 |
| Environment Agency Wales | Small wingless traps (group 10) | 6 | 11.00 | 66.00 | Small wingless traps (group 10) | 0 | 3 | |
| | Fyke nets | 12 | 5.00 | 60.00 | Fyke nets | 0 | 760 | 26 |
| | Gloucester wing net | 0 | | 0.00 | Gloucester wing net | 0 | 0 | 0 |
| | Fixed trap | 0 | | 0.00 | Fixed trap | 0 | 0 | 0 |
| | Elver dip net | 121 | 69.00 | 8349.00 | Elver dip net | 118 | 0 | 0 |
| | Eel trawl net | 0 | | 0.00 | Eel trawl net | 0 | 0 | 0 |
| | Total | 139 | | 8,475.00 | Total | 118 | 763 | 26 |
| North West | Small wingless traps (group 10) | 3 | 11.00 | 33.00 | Small wingless traps (group 10) | 0 | | 0 |
| | Fyke nets | 15 | 5.00 | 75.00 | Fyke nets | 0 | 474 | 263 |
| | Gloucester wing net | 0 | | 0.00 | Gloucester wing net | 0 | 0 | 0 |
| | Fixed trap | 1 | 106.00 | 106.00 | Fixed trap | 0 | 0 | 0 |
| | Elver dip net | 27 | 69.00 | 1863.00 | Elver dip net | 92 | 0 | 0 |
| | Eel trawl net | 0 | | 0.00 | Eel trawl net | 0 | 0 | 0 |
| | Total | 46 | | 2,077.00 | Total | 92 | 474 | 263 |
| England & Wales | Total | 864 | | 47,931.00 | Total | 833 | 25,369 | 5,841 |

Table 3 NATIONAL ROD FISHING LICENCES - NUMBER AND VALUE, valid from 1 April 2008 to 31 March 2009

| Environment Agency Region | Non-migratory trout and coarse fish | | | | | | Salmon and sea trout | | | | | | All licences Total Number (%) | |
|---------------------------------|-------------------------------------|---------------------------|----------------------|------------------|---------------------|-------------|----------------------------|----------------------------------|----------------------|----------------------|---------------------|------------|--|-----|
| | Full Duty £25.00 | Concession Duty £16.75 | Junior Duty £5.00 | 8 Day Duty £9 | 1 Day Duty £3.50 | Total | Full Duty £68.00 (a) | Concession Duty £45.00 (a) | Junior Duty £5.00 | 8 Day Duty £22.00 | 1 Day Duty £7.50 | Total | | |
| North East | 82,753 | 21,440 | 15,688 | 5,441 | 48,671 | 173,993 | 2,979 | 1,125 | 220 | 307 | 1,359 | 5,990 | 179,983 | 13% |
| Anglian | 113,395 | 25,029 | 20,980 | 8,142 | 48,999 | 216,545 | 319 | 145 | 57 | 315 | 368 | 1,204 | 217,749 | 16% |
| Thames | 117,155 | 21,574 | 19,560 | 9,359 | 63,216 | 230,864 | 1,042 | 287 | 126 | 569 | 948 | 2,972 | 233,836 | 17% |
| Southern | 59,006 | 11,948 | 12,183 | 5,629 | 35,634 | 124,400 | 475 | 196 | 66 | 238 | 350 | 1,325 | 125,725 | 9% |
| South West | 45,423 | 9,854 | 8,610 | 3,572 | 25,028 | 92,487 | 1,840 | 791 | 149 | 253 | 1,009 | 4,042 | 96,529 | 7% |
| Midlands | 131,345 | 35,476 | 22,305 | 7,746 | 62,484 | 259,356 | 1,202 | 708 | 84 | 349 | 770 | 3,113 | 262,469 | 20% |
| E.A. Wales | 28,849 | 7,152 | 6,552 | 1,844 | 17,797 | 62,194 | 4,139 | 1,968 | 463 | 226 | 772 | 7,568 | 69,762 | 5% |
| North West | 76,850 | 18,663 | 14,130 | 5,169 | 29,802 | 144,614 | 3,621 | 1,641 | 305 | 307 | 1,262 | 7,136 | 151,750 | 11% |
| Unknown | 955 | 158 | 283 | 2,091 | 2,632 | 6,119 | 112 | 61 | 18 | 128 | 231 | 550 | 6,669 | 0% |
| Total | 655,731 | 151,294 | 120,291 | 48,993 | 334,263 | 1,310,572 | 15,729 | 6,922 | 1,488 | 2,692 | 7,069 | 33,900 | 1,344,472 | |
| Total Value (£) | £16,393,275 | £2,534,175 | £601,455 | £440,937 | £1,169,921 | £21,139,762 | £1,056,947 | £309,480 | £7,305 | £59,224 | £53,018 | £1,485,974 | £22,625,736 | |

(a) Full and concession salmon and sea trout licences include upgrades from non-migratory trout and coarse fish licences.

Table 5 ROD FISHING SEASON FOR SALMON AND SEA TROUT - Including method restrictions and bag limits 2008

| Environment Agency Region | River | Salmon Season (Inclusive dates) | Sea trout Season (Inclusive dates) | *Method Restrictions | *Bag limits/Catch and Release etc. | |
|-----------------------------------|---------------------------------------|---------------------------------------|--|--|---|---|
| North East | Ah | 1.2 - 31.10 | 3.4 - 31.10 | | | |
| | Coquet | 1.2 - 31.10 | 3.4 - 31.10 | | | |
| | Tyne | 1.2 - 31.10 | 3.4 - 31.10 | | | |
| | Wear | 1.2 - 31.10 | 3.4 - 31.10 | | | |
| | Tees | 1.2 - 31.10 | 3.4 - 31.10 | | | |
| | Esk (Yorks) | 6.4 - 31.10 | 6.4 - 31.10 | | | |
| | Ouse (Yorks) | 6.4 - 31.10 | 6.4 - 31.10 | | | |
| | Region | 1.4 - 28.9 | 1.4 - 28.9 | | 2 bag limit per day | |
| | Thames | 1.4 - 30.9 | 1.4 - 30.9 | | 2 salmon bag limit a day | |
| | Southern | 17.1 - 2.10 | 1.5 - 31.10 | Voluntary worm ban throughout season | Catch & Release all season for salmon (focal agreement) | |
| | | 17.1 - 2.10 | 1.5 - 31.10 | Voluntary worm ban throughout season | Catch & Release all season for salmon (focal agreement) | |
| | South West | Avon (Hants) | 1.2 - 31.8 | 15.4 - 31.10 | artificial fly only before 15/5 | Catch & Release all season for salmon (focal agreement) |
| | | Piddle | 1.3 - 31.8 | 15.4 - 31.10 | artificial fly only before 15/5 | Catch & Release all season for salmon (focal agreement) |
| | | Frome | 1.3 - 31.8 | 15.4 - 31.10 | artificial fly only before 15/5 | Catch & Release all season for salmon (focal agreement) |
| Axe | | 15.3 - 31.10 | 15.4 - 31.10 | no shrimp, prawn, worm or maggot. Fly only after 3/17 below Axbridge | | |
| Exe | | 14.2 - 30.9 | 15.3 - 30.9 | no shrimp, prawn, worm or maggot. Fly only after 3/17 below Axbridge | | |
| Teign | | 1.2 - 30.9 | 15.3 - 31.10 | no worm or maggot before 1/6 | Fly only and mandatory catch and release during trial extension period | |
| Dart | | 1.2 - 30.9 | 15.3 - 30.9 | no worm or maggot | | |
| Avon (Devon) | | 15.4 - 30.11 | 15.4 - 30.9 | no worm or maggot. No shrimp/prawn exc. below Staverton Br. | | |
| Plym | | 1.4 - 15.12 | 3.3 - 30.9 | no worm, maggot, shrimp or prawn after 3/18 | | |
| Tavy | | 1.3 - 14.10 | 3.3 - 30.9 | no worm, maggot, shrimp or prawn after 3/18 | | |
| Tamar | | 1.3 - 14.10 | 3.3 - 30.9 | no worm, maggot, shrimp or prawn after 3/18 | | |
| Lynher | | 1.3 - 14.10 | 3.3 - 30.9 | no worm, maggot, shrimp or prawn after 3/18 | | |
| Fowey | | 1.4 - 15.12 | 1.4 - 30.9 | no worm, maggot, shrimp or prawn after 3/18 | | |
| Camel | | 1.4 - 15.12 | 1.4 - 30.9 | no worm, maggot, shrimp or prawn after 3/18 | | |
| Taw | | 1.3 - 30.9 | 15.3 - 30.9 | no shrimp, prawn, worm or maggot. Fly only 1/4 to 3/15 | 2 (2) salmon a day; 3 (2) a week and 10 (5, 7) in a season; ST 5 (2), 15 (7) and 40 (20) respectively | |
| Torridge | | 1.3 - 30.9 | 15.3 - 30.9 | no shrimp, prawn, worm or maggot. Fly only 1/4 to 3/15 | (2 salmon limit before June 1st) & return of all salmon > 70 cm after Aug 1st. | |
| Lyn | | 1.2 - 31.10 | 15.3 - 30.9 | no worm or maggot before 1/6 | Numbers for Taw, Torridge in brackets. 7 salmon in a season on the Torridge | |
| Yealm | | 1.4 - 15.12 | 18.3 - 30.9 | no worm, maggot, shrimp or prawn after 3/18 | | |
| Midlands Environment Agency Wales | | Severn | 1.2 - 7.10 | 18.3 - 7.10 | no float fishing with lure or bait | |
| | | Wye | 3.3 - 17.10 (a) | 3.3 - 17.10 (a) | Fly only 1.9 to 17.10. No bait all season | |
| | Taff | 3.3 - 17.10 | 20.3 - 17.10 | Fly only 3.3 - 1.6. Fly and Spin 15.9 - 17.10 | | |
| | Ogmore | 20.3 - 17.10 | 20.3 - 17.10 | Fly and Spin 20.3 - 15.4 & 1.10 - 17.10 | | |
| | Afan | 20.3 - 17.10 | 20.3 - 17.10 | Fly and Spin 20.3 - 15.4 & 1.10 - 17.10 | | |
| | Neath | 20.3 - 17.10 | 20.3 - 17.10 | Fly and Spin 20.3 - 15.4 & 1.10 - 17.10 | | |
| | Tawe | 20.3 - 17.10 | 20.3 - 17.10 | Fly and Spin 20.3 - 15.4 & 1.10 - 17.10 | | |
| | Loughor | 20.3 - 17.10 | 20.3 - 17.10 | Fly and Spin 20.3 - 15.4 & 1.10 - 17.10 | | |
| | Tywi | 1.4 - 17.10 | 1.4 - 17.10 | Fly and Spin 7.10 - 17.10 | daily bag of 2 salmon & 4 sea trout, weekly bag of 5 salmon. C&R 8, 10 to 17.10 | |
| | Taf | 1.4 - 17.10 | 1.4 - 17.10 | Fly and Spin 7.10 - 17.10 | daily bag of 2 salmon & 4 sea trout, weekly bag of 5 salmon. C&R 8, 10 to 17.10 | |
| | E-RW, Cleddau | 1.4 - 17.10 | 1.4 - 17.10 | Fly and Spin 7.10 - 17.10 | daily bag of 2 salmon & 4 sea trout, weekly bag of 5 salmon. C&R 8, 10 to 17.10 | |
| | NeVERN | 1.4 - 17.10 | 1.4 - 17.10 | Fly and Spin 7.10 - 17.10 | daily bag of 2 salmon & 4 sea trout, weekly bag of 5 salmon. C&R 8, 10 to 17.10 | |
| | Telfi | 1.4 - 17.10 | 1.4 - 17.10 | Fly and Spin 7.10 - 17.10 | daily bag of 2 salmon & 4 sea trout, weekly bag of 5 salmon. C&R 8, 10 to 17.10 | |
| | Aeron | 1.4 - 17.10 | 1.4 - 17.10 | Fly and Spin 7.10 - 17.10 | daily bag of 2 salmon & 4 sea trout, weekly bag of 5 salmon. C&R 8, 10 to 17.10 | |
| | Ystwyth | 1.4 - 17.10 | 1.4 - 17.10 | Fly and Spin 7.10 - 17.10 | daily bag of 2 salmon & 4 sea trout, weekly bag of 5 salmon. C&R 8, 10 to 17.10 | |
| | Rheidol | 1.4 - 17.10 | 1.4 - 17.10 | Fly and Spin 7.10 - 17.10 | daily bag of 2 salmon & 4 sea trout, weekly bag of 5 salmon. C&R 8, 10 to 17.10 | |
| | Dyfi | 20.3 - 17.10 (some sections to 31.10) | 20.3 - 17.10 (some sections to 31.10) | Fly and Spin 20.3 - 15.4 & 7.10 - 17.10 | daily bag of 2 salmon & 4 sea trout, weekly bag of 5 salmon. C&R 8, 10 to 17.10 | |
| | Dysynni | 20.3 - 17.10 | 20.3 - 17.10 | Fly and Spin 20.3 - 15.4 & 7.10 - 17.10 | daily bag of 2 salmon & 4 sea trout, weekly bag of 5 salmon. C&R 8, 10 to 17.10 | |
| | Mawddach | 20.3 - 17.10 | 20.3 - 17.10 | Fly and Spin 20.3 - 15.4 & 7.10 - 17.10 | daily bag of 2 salmon & 4 sea trout, weekly bag of 5 salmon. C&R 8, 10 to 17.10 | |
| | Arw | 20.3 - 17.10 | 20.3 - 17.10 | Fly and Spin 20.3 - 15.4 & 7.10 - 17.10 | daily bag of 2 salmon & 4 sea trout, weekly bag of 5 salmon. C&R 8, 10 to 17.10 | |
| Dwyrdd | 20.3 - 17.10 (some sections to 31.10) | 20.3 - 17.10 (some sections to 31.10) | Fly and Spin 20.3 - 15.4 & 7.10 - 17.10 | Catch & Release salmon and sea trout 18.10 to 31.10 | | |
| Glaslyn | 20.3 - 17.10 | 20.3 - 17.10 | Fly and Spin 20.3 - 15.4 & 7.10 - 17.10 | | | |
| Dwyfawr | 20.3 - 17.10 | 20.3 - 17.10 | Fly and Spin 20.3 - 15.4 & 7.10 - 17.10 | | | |
| Llyfni | 20.3 - 17.10 | 20.3 - 17.10 | Fly and Spin 20.3 - 15.4 & 7.10 - 17.10 | | | |
| Gwyrfai | 20.3 - 17.10 | 20.3 - 17.10 | Fly and Spin 20.3 - 15.4 & 7.10 - 17.10 | | | |
| Saint | 20.3 - 15.11 | 20.3 - 15.11 | Fly and Spin 20.3 - 15.4 & 7.10 - 17.10 | | | |
| Ogwen | 20.3 - 17.10 (some sections to 31.10) | 20.3 - 17.10 (some sections to 31.10) | Fly and Spin 20.3 - 15.4 & 7.10 - 17.10 | Catch & Release salmon and sea trout 18.10 to 15.11 | | |
| Conwy | 20.3 - 17.10 (some sections to 31.10) | 20.3 - 17.10 (some sections to 31.10) | Fly and Spin 20.3 - 15.4 & 7.10 - 17.10 | Catch & Release salmon and sea trout 18.10 to 31.10 | | |
| Cwyd | 20.3 - 17.10 | 20.3 - 17.10 | Fly and Spin 20.3 - 1.6. Fly only 1.10 - 17.10 | Catch & Release salmon and sea trout 18.10 to 31.10 | | |
| Dec | 3.3 - 17.10 | 3.3 - 17.10 | Fly only 3.3 - 1.6. Fly and Spin 1.10 - 17.10 | | | |
| North West | Ribble | 1.2 - 31.10 | 1.4 - 30.9 | | Byelaw (28/02/07) No more than 2 salmon can be killed per season | |
| | Wye | 1.2 - 31.10 | 1.4 - 30.9 | | Byelaw (NW-14/02/00) no more than four salmon may be killed during the season. | |
| | Lune | 1.2 - 31.10 | 1.4 - 30.9 | | Byelaw (NW-08/05/03) requiring release of all salmon after capture. | |
| | Kent | 1.2 - 31.10 | 1.4 - 30.9 | | Byelaw (NW-08/05/03) requiring release of all salmon after capture. | |
| | Leven | 1.2 - 31.10 | 1.4 - 30.9 | | Byelaw (NW-08/05/03) requiring release of all salmon after capture. | |
| | Crake | 1.2 - 31.10 | 1.4 - 30.9 | | Byelaw (NW-08/05/03) requiring release of all salmon after capture. | |
| | Duddon | 1.2 - 31.10 | 1.4 - 30.9 | | Byelaw (NW-08/05/03) requiring release of all salmon after capture. | |
| | Esk (Cumbrian) | 1.2 - 31.10 | 1.4 - 30.9 | | Byelaw (NW-08/05/03) requiring release of all salmon after capture. | |
| | Irt | 1.2 - 31.10 | 1.4 - 30.9 | | Byelaw (NW-08/05/03) requiring release of all salmon after capture. | |
| | Calder | 1.2 - 31.10 | 1.4 - 30.9 | | Byelaw (NW-08/05/03) requiring release of all salmon after capture. | |
| | Ehen | 1.2 - 31.10 | 1.4 - 30.9 | | Byelaw (NW-08/05/03) requiring release of all salmon after capture. | |
| | Derwent | 1.2 - 31.10 | 1.4 - 30.9 | | Byelaw (NW-08/05/03) requiring release of all salmon after capture. | |
| | Ellen | 1.2 - 31.10 | 1.4 - 30.9 | | Byelaw (NW-08/05/03) requiring release of all salmon after capture. | |
| | Eder | 15.1 - 14.10 | 1.4 - 30.9 | | Byelaw (NW-08/05/03) requiring release of all salmon after capture. | |
| Esk (Border) | 1.2 - 31.10 | 1.4 - 30.9 | | Byelaw (NW-08/05/03) requiring release of all salmon after capture. | | |
| Others | 1.2 - 31.10 (b) | 1.4 - 30.9 (b) | | Byelaw (28/02/07) No more than 2 salmon can be killed per season | | |

Notes (a) Season 3.3 to 25.10 Rivers Ifon, Ithon and main River Wye upstream of Llanwrthwl Bridge (b) Rivers Annas, Bleng, Mile * National spring salmon byelaws apply Note: EA Wales - variations apply to Anglesey and Llyn Peninsula (check local byelaws). Always check local byelaws and club rules before fishing.

Table 6 SALMON NET CATCHES - 2008 season

| Environment Agency Region | River/ Fishery | Fishing Method | No. Lics | Phase Out NLO | Feb | Mar | Apr | May | Jun | Jul | Aug | Sep | Un-Known | Total Number | Total Weight (kg) | Average Weight (kg) | |
|---------------------------|----------------------|----------------------------|------------|---------------|-----|-----|-----|-----|------|------|------|------|----------|--------------|-------------------|---------------------|------|
| North East Northumbria | Coastal (N) | Drift nets | 14 (a) | X | - | - | - | - | 747 | 1082 | 1282 | - | 0 | 3111 | 12089 | 3.89 | |
| | | T nets | 26 (a) | | - | (0) | (0) | (0) | 546 | 798 | 810 | - | 0 | 2154 | 5640 | 2.62 | |
| | Coastal (S) | Drift nets | 0 | X | - | - | - | - | - | - | - | - | - | 0 | - | - | |
| | | T nets | 1 | | - | (0) | (0) | (0) | 1 | 28 | 55 | - | 0 | 84 | 470 | 5.60 | |
| | North East Yorkshire | Coastal | Drift nets | 2 | X | - | - | - | - | 106 | 161 | 271 | - | 0 | 538 | 1807 | 3.36 |
| T or J nets | | | 31 (c) | | - | (0) | (0) | (0) | 60 | 102 | 141 | 51 | 0 | 354 | 1194 | 3.37 | |
| Whole area | | Total | 74 | | - | (0) | (0) | (0) | 1460 | 2171 | 2559 | 51 | 0 | 6241 | 21200 | 3.40 | |
| Anglian | Coastal | Drift nets | 25 | X | - | - | (0) | (0) | 0 | 2 | 2 | 5 | 0 | 9 | 54 | 6.00 | |
| | Whole area | Other nets (var.) Total | 8 33 | X | - | - | (0) | (0) | 0 | 0 | 0 | 0 | 0 | 0 | 0 | 0.00 | |
| Southern | Hants area | Seine nets | 0 | | - | - | - | - | 0 | 0 | - | - | 0 | 0 | 0 | 0.00 | |
| | Whole area | Total | 0 | | - | - | - | - | 0 | 0 | - | - | 0 | 0 | 0 | 0.00 | |
| South West | Avon + Stour* | Seine nets | 4 | | - | - | - | - | 168 | 100 | - | - | 0 | 268 | 624 | 2.33 | |
| | Poole Harbour* | Seine net | 1 | | - | - | - | - | 7 | 1 | - | - | 0 | 8 | 27 | 3.38 | |
| | Exe | Seine nets | 3 | | - | - | - | - | 20 | 69 | 48 | - | 0 | 137 | 378 | 2.76 | |
| | Teign | Seine nets | 3 | | - | (0) | (3) | (4) | 44 | 52 | - | - | 0 | 103 | 378 | 3.67 | |
| | Dart | Seine nets | 3 | | - | (0) | (0) | (1) | 8 | 14 | 31 | - | 0 | 54 | 187 | 3.46 | |
| | Camel | Drift nets | 6 | | - | - | - | - | 0 | 0 | 0 | - | 0 | 0 | 0 | 0.00 | |
| | Fowey | Seine nets | 2 | | - | 0 | 0 | 0 | 0 | 0 | - | - | 0 | 0 | 0 | 0.00 | |
| | Taw/Torridge | Seine nets | 3 | X | - | - | - | - | 8 | 9 | 0 | - | 0 | 17 | 61 | 3.59 | |
| | Whole area | Total | 25 | | - | (0) | (3) | (5) | 255 | 245 | 79 | - | 0 | 587 | 1655 | 2.82 | |
| | Midlands | Severn | Seine nets | 3 | | - | - | - | - | 0 | 0 | 0 | - | 0 | 0 | 0 | 0.00 |
| Lave nets | | | 24 (b) | | - | - | - | - | 52 | 31 | 17 | - | 0 | 100 | 429 | 4.29 | |
| Fixed Engines | | | 5 | | - | - | - | - | 399 | 230 | 142 | - | 0 | 771 | 3313 | 4.30 | |
| Whole area | | Total | 32 | | - | - | - | - | 451 | 261 | 159 | - | 0 | 871 | 3742 | 4.30 | |
| Wales | Wye | Lave nets | 7 | | - | - | - | - | 0 | 2 | 2 | - | 0 | 4 | 11 | 2.75 | |
| | | Seine nets | 3 | | - | (0) | (0) | (0) | 9 | 7 | - | - | 0 | 16 | 62 | 3.88 | |
| | | Coracle nets | 8 | | - | (7) | (2) | (0) | 10 | 10 | - | - | 0 | 29 | 104 | 3.59 | |
| | | River total | 11 | | - | (7) | (2) | (0) | 19 | 17 | 0 | - | 0 | 45 | 166 | 3.69 | |
| | Taf | Wade net | 1 | | - | (0) | (0) | (0) | 0 | 0 | 0 | - | 0 | 0 | 0 | 0.00 | |
| | | Coracle net | 1 | | - | (0) | (0) | (0) | 0 | 0 | 0 | - | 0 | 0 | 0 | 0.00 | |
| | | River total | 2 | | - | (0) | (0) | (0) | 0 | 0 | 0 | - | 0 | 0 | 0 | 0.00 | |
| | E+W.Cleddau | Compass nets | 6 | | - | - | - | - | 2 | 1 | 0 | - | 0 | 3 | 9 | 3.00 | |
| | | Seine net | 0 | | - | - | 0 | 0 | 0 | 0 | 0 | - | 0 | 0 | 0 | 0.00 | |
| | Nevern | Seine nets | 3 | | - | - | 0 | 0 | 8 | 24 | 9 | - | 0 | 41 | 146 | 3.56 | |
| | Teifi | Coracle nets | 11 | | - | - | (0) | (0) | 18 | 6 | 0 | - | 0 | 24 | 102 | 4.25 | |
| | | River total | 14 | | - | 0 | (0) | (0) | 26 | 30 | 9 | - | 0 | 65 | 248 | 3.82 | |
| | | Seine nets | 3 | | - | - | (0) | (0) | 0 | 0 | 0 | - | 0 | 0 | 0 | 0.00 | |
| | Dyfi | Seine net | 1 | | - | - | - | - | 0 | 0 | 0 | - | 0 | 0 | 0 | 0.00 | |
| | Dysynni | Seine net | 1 | | - | - | - | - | 0 | 0 | 0 | - | 0 | 0 | 0 | 0.00 | |
| | Mawddach | Seine nets | 2 | | - | - | - | - | 0 | 0 | 0 | - | 0 | 0 | 0 | 0.00 | |
| | Glaslyn | Seine nets | 0 | | - | - | - | - | 0 | 0 | 0 | - | 0 | 0 | 0 | 0.00 | |
| | Conwy | Basket trap | 1 | | - | - | - | - | 0 | 0 | 0 | - | 0 | 0 | 0 | 0.00 | |
| | | Seine nets | 3 | | - | - | - | - | 0 | 0 | 0 | - | 0 | 0 | 0 | 0.00 | |
| | Dee | River total | 4 | | - | 0 | 0 | 0 | 0 | 0 | 0 | - | 0 | 0 | 0 | 0.00 | |
| | | Trammel nets | 0 | X | - | - | - | - | 0 | 0 | 0 | - | 0 | 0 | 0 | 0 | 0.00 |
| | | Draft nets | 3 | X | - | - | - | - | 0 | 2 | 16 | 25 | - | 0 | 43 | 127 | 2.95 |
| | | River total | 3 | | - | 0 | 0 | 0 | 2 | 2 | 16 | 25 | - | 0 | 43 | 127 | 2.95 |
| Whole area | | Total | 53 | | - | (7) | (2) | (0) | 49 | 66 | 36 | - | 0 | 160 | 561 | 3.51 | |
| North West | Ribble | Drift nets | 6 | | - | - | - | - | 4 | 15 | 45 | - | 0 | 64 | 287 | 4.48 | |
| | | Haaf nets | 11 | | - | - | - | - | 10 | 14 | 62 | - | 0 | 86 | 314 | 3.65 | |
| | | Drift nets | 7 | | - | - | - | - | 12 | 54 | 172 | - | 0 | 238 | 764 | 3.21 | |
| | | Seine net | 1 | X | - | - | - | - | 1 | 5 | 11 | - | 0 | 17 | 60 | 3.53 | |
| | Kent | River total | 19 | | - | - | - | - | 23 | 73 | 245 | - | 0 | 341 | 1138 | 3.34 | |
| | | Lave nets | 6 | | - | - | - | - | 0 | 0 | 0 | - | 0 | 0 | 0 | 0.00 | |
| | | Lave nets | 3 | | - | - | - | - | 0 | 1 | 0 | - | 0 | 1 | 2 | 2.00 | |
| | | Haaf nets | 79 | | - | - | - | - | 67 | 127 | 283 | 79 | 0 | 556 | 1807 | 3.25 | |
| | | Coop nets | 3 | | - | - | - | - | 8 | 11 | 0 | 0 | 0 | 19 | 65 | 3.42 | |
| | Whole area | Total | 116 | | - | - | - | - | 102 | 227 | 573 | 79 | 0 | 981 | 3299 | 3.36 | |
| | England and Wales | | | 333 | | - | (7) | (5) | (5) | 2317 | 2972 | 3408 | 135 | 0 | 8849 | 30511 | 3.45 |

Key: (a) Separate licences for drift and T nets were issued for the first time in the northern area in 1993.
(b) Figures for half- and full-season lave nets combined.
(c) Special dispensation to fish 2 weeks into September as part of ongoing investigations
(X) Denotes that a phase out Net Limitation Order (NLO) is in place.

Notes: Salmon caught pre 1 June released alive
A dash is used to denote months that fall entirely within the annual close season.
* Avon/Stour - all salmon released following capture. Poole Harbour - July fish tagged (CEH) and released

Table 7 SEA TROUT NET CATCHES - 2008 season

| Environment Agency Region | River/ Fishery | Fishing Method | No. Lics | Phase Out NLO | Feb | Mar | Apr | May | Jun | Jul | Aug | Sep | Un-known | Total Number | Total Weight (kg) | Average Weight (kg) | |
|---------------------------|--|-------------------|-----------|---------------|-----|-----|-----|------|-------|------|------|------|----------|--------------|-------------------|---------------------|------|
| | | | | | | | | | | | | | | | | | |
| North East Northumbria | Coastal (N) | Drift nets | 14 (a) | X | - | - | - | - | 949 | 792 | 837 | - | 0 | 2578 | 5852 | 2.27 | |
| | | T nets | 26 (a, b) | X | - | 0 | 4 | 1164 | 3417 | 3857 | 1358 | - | 0 | 9800 | 16660 | 1.70 | |
| North East Yorkshire | Coastal (S) | Drift nets | 0 | X | - | - | - | - | - | - | - | - | 0 | - | - | 0.00 | |
| | | T nets | 1 (b) | X | - | 0 | 0 | 0 | 20 | 203 | 18 | - | 0 | 241 | 627 | 2.60 | |
| | Coastal | Drift nets | 2 | X | - | - | - | - | 408 | 351 | 237 | - | 0 | 996 | 2709 | 2.72 | |
| | | T or J nets | 31 (b) | X | - | 0 | 5 | 863 | 4214 | 3597 | 1617 | 954 | 0 | 11250 | 20677 | 1.84 | |
| | Whole area | Total | 74 | | - | 0 | 9 | 2027 | 9008 | 8800 | 4067 | 954 | 0 | 24865 | 46525 | 1.87 | |
| Anglian | Coastal | Drift nets | 25 (b) | X | - | - | 2 | 20 | 17 | 123 | 141 | 206 | 0 | 509 | 737 | 1.45 | |
| | | Other nets (var.) | 8 (b) | X | - | - | 0 | 57 | 57 | 23 | 56 | 12 | 0 | 205 | 283 | 1.38 | |
| | | Total | 33 | | - | 0 | 2 | 77 | 74 | 146 | 197 | 218 | 0 | 714 | 1020 | 1.43 | |
| Southern | Beaulieu | Seine nets | 1 | | - | - | - | - | 0 | 0 | 0 | - | 0 | 0 | 0 | 0.00 | |
| | Whole area | Total | 1 | | - | - | - | - | 0 | 0 | 0 | - | 0 | 0 | 0 | 0.00 | |
| South West | Avon + Stour | Seine nets | 4 | | - | - | - | - | 168 | 100 | - | - | 0 | 268 | 624 | 2.33 | |
| | Poole Harbour | Seine net | 1 | | - | - | - | - | 7 | 1 | - | - | 0 | 8 | 27 | 3.38 | |
| | Exe | Seine nets | 3 | | - | - | - | - | 14 | 4 | 2 | - | 0 | 20 | 27 | 1.35 | |
| | Teign | Seine nets | 3 (b) | | - | 0 | 27 | 69 | 66 | 29 | 0 | - | 0 | 191 | 242 | 1.27 | |
| | Dart | Seine nets | 3 (b) | | - | 0 | 25 | 25 | 34 | 13 | 10 | - | 0 | 107 | 151 | 1.41 | |
| | Camel | Drift nets | 3 | | - | - | - | - | 0 | 0 | - | - | 0 | 0 | 0 | 0.00 | |
| | Fowey | Seine nets | 0 (b) | | - | 0 | 0 | 0 | 0 | 0 | 0 | - | 0 | 0 | 0 | 0.00 | |
| | Taw/Torridge | Seine nets | 3 | X | - | - | - | - | 44 | 56 | 0 | - | 0 | 100 | 63 | 0.63 | |
| | Whole area | Total | 20 | | - | 0 | 52 | 94 | 333 | 203 | 12 | - | 0 | 694 | 1134 | 1.63 | |
| Environment Agency Wales | Tywi | Seine nets | 3 (b) | | - | 4 | 67 | 88 | 107 | 40 | 0 | - | 0 | 306 | 555 | 1.81 | |
| | | Coracle nets | 8 (b) | | - | 20 | 152 | 109 | 69 | 17 | 0 | - | 0 | 367 | 832 | 2.27 | |
| | | River total | 11 | | - | 24 | 219 | 197 | 176 | 57 | 0 | - | 0 | 673 | 1387 | 2.06 | |
| | Taf | Wade net | 1 | | - | - | - | - | 1 | 0 | - | - | - | 0 | 1 | 1 | 1.00 |
| | | Coracle net | 1 (b) | | - | 0 | 0 | 0 | 0 | 0 | - | - | - | 0 | 0 | 0 | 0.00 |
| | | River total | 2 | | - | 0 | 0 | 0 | 1 | 0 | 0 | - | 0 | 0 | 1 | 1 | 1.00 |
| | E+W.Cleddau | Compass nets | 6 | | - | - | - | - | 5 | 0 | 0 | - | - | 0 | 5 | 7 | 1.40 |
| | | Seine net | 0 (b) | | - | - | 0 | 0 | 0 | 0 | 0 | - | - | 0 | 0 | 0 | 0.00 |
| | NeVERN | Seine nets | 3 (b) | | - | - | 1 | 10 | 62 | 7 | 0 | - | - | 0 | 80 | 147 | 1.84 |
| | | Coracle nets | 11 (b) | | - | - | 17 | 68 | 92 | 16 | 1 | - | - | 0 | 194 | 346 | 1.78 |
| | | River total | 14 | | - | 0 | 18 | 78 | 154 | 23 | 1 | - | - | 0 | 274 | 493 | 1.80 |
| | Dyfi | Seine nets | 3 (b) | | - | - | 5 | 5 | 15 | 4 | 0 | - | - | 0 | 29 | 79 | 2.72 |
| | | Seine net | 1 | | - | - | - | 5 | 5 | 9 | 2 | - | - | 0 | 21 | 28 | 1.33 |
| | Mawddach | Seine nets | 2 | | - | - | - | 0 | 4 | 0 | 0 | - | - | 0 | 4 | 10 | 2.50 |
| | | Seine nets | 0 | | - | - | - | - | 0 | 0 | 0 | - | - | 0 | 0 | 0 | 0.00 |
| | Glaslyn | Basket Trap | 1 | | - | - | - | - | 0 | 0 | 0 | - | - | 0 | 0 | 0 | 0.00 |
| | | Seine nets | 3 | | - | - | - | - | 0 | 0 | 0 | - | - | 0 | 0 | 0 | 0.00 |
| | | River Total | 4 | | - | 0 | 0 | 0 | 0 | 0 | 0 | - | - | 0 | 0 | 0 | 0.00 |
| | Clwyd | Sling nets | 0 | | - | - | - | - | - | - | - | - | - | - | - | - | - |
| | | Trammel nets | 0 | X | - | - | - | - | 0 | 0 | 0 | - | - | 0 | 0 | 0 | 0.00 |
| Seine nets | | 5 | X | - | - | - | - | 6 | 9 | 0 | - | - | 0 | 15 | 21 | 0.00 | |
| Dee | River total | 5 | | - | 0 | 0 | 0 | 6 | 9 | 0 | - | - | 0 | 15 | 21 | 1.40 | |
| | Whole area | Total | 48 | | - | 24 | 242 | 285 | 366 | 102 | 3 | - | - | 1022 | 2026 | 1.98 | |
| North West | Ribble | Drift nets | 6 | | - | - | - | - | 1 | 0 | 0 | - | 0 | 1 | 5 | 5.00 | |
| | Lune | Haaf nets | 11 | | - | - | - | - | 205 | 42 | 1 | - | - | 0 | 248 | 343 | 1.38 |
| | | Drift nets | 7 | | - | - | - | - | 15 | 10 | 0 | - | - | 0 | 25 | 54 | 2.16 |
| | | Seine net | 1 | X | - | - | - | - | 24 | 2 | 1 | - | - | 0 | 27 | 43 | 1.59 |
| | | River total | 19 | | - | - | - | - | 244 | 54 | 2 | - | - | 0 | 300 | 440 | 1.47 |
| | Kent | Lave nets | 6 | | - | - | - | - | 0 | 0 | 0 | - | - | 0 | 0 | 0.00 | |
| | Leven | Lave nets | 3 | | - | - | - | - | 0 | 0 | 1 | - | - | 1 | 2 | 2.00 | |
| | Eden + Esk | Haaf nets | 79 | | - | - | - | - | 337 | 31 | 8 | 1 | 0 | 377 | 519 | 1.38 | |
| | Eden | Coop nets | 3 | | - | - | - | - | 0 | 0 | 0 | - | - | 0 | 0 | 0.00 | |
| Whole area | Total | 116 | | - | - | - | - | 582 | 85 | 11 | 1 | 0 | 679 | 966 | 1.42 | | |
| England and Wales | | | 292 | | - | 24 | 305 | 2483 | 10363 | 9336 | 4290 | 1173 | 0 | 27974 | 51671 | 1.85 | |
| Key: | (a) Separate licences for drift and T nets were issued for the first time in the northern area in 1993. (b) Sea trout fisheries exempted from national byelaws | | | | | | | | | | | | | | | | |
| Notes: | (X) Denotes that a phase out Net Limitation Order (NLO) is in place. Both the River Wye and Severn net fisheries catch very few sea trout so are not included in this table A dash is used to denote months that fall entirely within the annual close season. | | | | | | | | | | | | | | | | |

Table 8 SALMON ROD CATCHES (released total in brackets) - 2008 season

| Environment Agency Region | River | Jan | Feb | Mar | Apr | May | Jun | Jul | Aug | Sep | Oct | Nov | Dec | Un-known | Total Number | |
|---------------------------|---------------|-------------------|---------|---------|-----------|-----------|-----------|-------------|-----------|------------|-------------|---------|---------|----------|--------------|-------------|
| North East | Aln | - | 1 (1) | 3 (3) | 8 (8) | 23 (23) | 103 (40) | 91 (34) | 160 (62) | 194 (75) | 5 (2) | 4 (1) | | 1 (0) | 6 (2) | |
| | Coquet | - | 13 (13) | 27 (27) | 47 (47) | 43 (43) | 227 (94) | 277 (88) | 505 (167) | 922 (433) | 1297 (749) | 6 (2) | | 25 (14) | 842 (377) | |
| | Tyne | - | 4 (4) | 7 (7) | 6 (6) | 14 (14) | 44 (20) | 73 (38) | 113 (50) | 249 (115) | 442 (265) | 3 (1) | 1 (1) | | 3389 (1657) | |
| | Wear | - | | 1 (1) | | 1 (1) | 3 (2) | 16 (7) | 33 (16) | 66 (39) | 140 (102) | 6 (6) | | 1 (1) | 959 (522) | |
| | Tees | - | | | | 1 (1) | 1 (1) | 5 (5) | 27 (13) | 47 (22) | 60 (32) | | | | 267 (175) | |
| | Esk (Yorks.) | - | | | | 1 (1) | 15 (14) | 9 (7) | 27 (13) | 47 (22) | 60 (32) | | | | 159 (87) | |
| | Ouse (Yorks.) | - | | | | 2 (2) | 2 (2) | 1 (1) | 1 (1) | 1 (1) | 3 (3) | | | | 10 (10) | |
| | Other | - | | | | | | 1 (1) | 1 (1) | 1 (1) | 1 (1) | | | | 2 (1) | |
| | Total | - | 18 (18) | 38 (38) | 61 (61) | 84 (84) | 394 (172) | 468 (153) | 840 (310) | 1479 (655) | 2202 (1283) | 19 (10) | 1 (1) | | 30 (16) | 5634 (2831) |
| | Thames | | | | | | | | | | | | | | | |
| Southern | Thames (a) | - | | | | | | | | | | | | | | |
| | Test (a) | 0 (0) | 0 (0) | 0 (0) | 5 (5) | 8 (8) | 21 (21) | 79 (79) | 192 (192) | 105 (105) | 8 (8) | | | | 419 (419) | |
| | Itchen (a) | 0 (0) | 0 (0) | 0 (0) | 5 (5) | 2 (2) | 13 (13) | 38 (38) | 102 (102) | 103 (103) | 18 (18) | | | 8 (8) | 289 (289) | |
| | Others | 0 (0) | 0 (0) | 0 (0) | 1 (1) | 0 (0) | 0 (0) | 2 (2) | 0 (0) | 0 (0) | 0 (0) | | | | 3 (3) | |
| | Total | 0 (0) | 0 (0) | 0 (0) | 11 (11) | 10 (10) | 34 (34) | 119.1 (119) | 294 (294) | 208 (208) | 26 (26) | | | | 8 (8) | 711 (711) |
| | South West | Avon (Hants.) (a) | - | 6 (6) | 14 (14) | 8 (8) | 14 (14) | 6 (6) | 0 (0) | 17 (17) | 2 (2) | | | | | 67 (67) |
| | | Piddle | - | | 0 (0) | 0 (0) | 0 (0) | 0 (0) | 0 (0) | 0 (0) | 0 (0) | | | | | 0 (0) |
| | | Frome | - | | | | 3 (3) | 10 (9) | 9 (9) | 16 (15) | 2 (2) | 6 (6) | | | | 46 (44) |
| | | Axe | - | | | | | | 3 (3) | 4 (3) | 8 (8) | | | | | 23 (20) |
| | | Exe | - | 1 (1) | 10 (10) | 6 (6) | 18 (18) | 63 (43) | 89 (48) | 146 (65) | 156 (103) | 49 (48) | | | | 540 (344) |
| Teign | | - | 2 (2) | 1 (1) | 1 (1) | 10 (10) | 24 (22) | 39 (33) | 67 (43) | 54 (47) | 16 (16) | | 1 (1) | | 214 (175) | |
| Dart | | - | | | | 6 (6) | 6 (4) | 15 (10) | 47 (36) | 42 (37) | 8 (8) | | | | 124 (101) | |
| Avon (Devon) | | - | 2 (2) | 2 (2) | 11 (11) | 6 (6) | 5 (5) | 3 (3) | 8 (7) | 3 (1) | 17 (13) | 4 (4) | | | 61 (54) | |
| Erme | | - | | | | | | | 3 (1) | 2 (0) | | | | | 5 (1) | |
| Yealm | | - | | | | | | | 1 (1) | | | | 1 (1) | 3 (2) | 5 (4) | |
| Midlands | Plym | - | | | | | | | 8 (8) | 4 (3) | | | | | 5 (4) | |
| | Tavy | - | | | | | 2 (0) | 12 (8) | 16 (7) | 25 (13) | 23 (15) | 1 (1) | 3 (2) | | 23 (18) | |
| | Tamar | - | | | | | 41 (30) | 43 (27) | 67 (46) | 110 (85) | 72 (51) | 2 (2) | | | 81 (46) | |
| | Lynher | - | | | | | 5 (3) | 6 (2) | 17 (12) | 12 (8) | 25 (16) | | | | 358 (264) | |
| | Fowey | - | | | | | 2 (2) | 9 (3) | 17 (12) | 12 (8) | 25 (16) | | | | 67 (43) | |
| | Camel | - | | | | | 2 (2) | 9 (3) | 15 (8) | 16 (8) | 67 (50) | 47 (31) | 27 (20) | 4 (3) | 190 (128) | |
| | Torrige | - | | | | | 10 (5) | 37 (11) | 35 (23) | 60 (32) | 81 (44) | 90 (47) | 42 (26) | | 358 (191) | |
| | Taw | - | | | | | 8 (6) | 14 (7) | 26 (15) | 46 (35) | 8 (7) | | | 1 (1) | 119 (87) | |
| | Lyn | - | | | | | 23 (20) | 43 (25) | 98 (50) | 83 (45) | 1 (1) | | | | 287 (180) | |
| | Others | - | | | | | 4 (4) | 19 (9) | 22 (12) | 21 (10) | 35 (9) | | | | 117 (58) | |
| Total | - | 11 (11) | 32 (32) | 64 (64) | 106 (106) | 224 (164) | 348 (202) | 612 (367) | 660 (438) | 400 (298) | 147 (87) | 76 (51) | | 6 (5) | 2686 (1825) | |
| Trent | - | | | | | | | | | | | | | | 0 (0) | |
| Severn | - | 2 (2) | 11 (11) | 19 (19) | 39 (39) | 80 (30) | 59 (18) | 30 (12) | 40 (16) | 10 (5) | | | | 4 (3) | 294 (155) | |
| Total | - | 2 (2) | 11 (11) | 19 (19) | 39 (39) | 80 (30) | 59 (18) | 30 (12) | 40 (16) | 10 (5) | | | | 4 (3) | 294 (155) | |

(continued)

Table 8 (Continued) SALMON ROD CATCHES (released total in brackets) - 2008 season

| Environment Agency Region | River | Jan | Feb | Mar | Apr | May | Jun | Jul | Aug | Sep | Oct | Nov | Dec | Un-known | Total Number | |
|---------------------------|-------------------|-------|-------|---------|-----------|-----------|-----------|------------|------------|-------------|-------------|-------------|-----------|-----------|--------------|---------------|
| Environment Agency Wales | Wye (a) | - | - | 12 (12) | 74 (74) | 117 (117) | 282 (204) | 174 (96) | 139 (97) | 144 (95) | 142 (127) | 1 (1) | - | 14 (4) | 1099 (827) | |
| | Usk | - | - | 3 (3) | 14 (14) | 60 (60) | 252 (129) | 181 (66) | 203 (105) | 246 (134) | 192 (113) | 6 (4) | 6 (4) | 6 (4) | 1157 (628) | |
| | Taff | - | - | - | 1 (1) | 1 (1) | 7 (6) | 17 (7) | 9 (6) | 2 (2) | 6 (3) | 1 (0) | 1 (0) | 1 (0) | 21 (12) | |
| | Ogmore | - | - | - | 1 (1) | 1 (1) | 1 (1) | 17 (7) | 19 (9) | 17 (6) | 13 (8) | 4 (3) | 4 (3) | 4 (3) | 76 (38) | |
| | Alfan | - | - | - | 1 (1) | 1 (1) | 6 (4) | 17 (5) | 20 (5) | 19 (5) | 35 (12) | 1 (0) | 1 (0) | 1 (0) | 9 (6) | |
| | Neath | - | - | 1 (1) | - | - | 8 (5) | 12 (2) | 38 (9) | 68 (27) | 69 (20) | 4 (2) | 4 (2) | 4 (2) | 99 (32) | |
| | Tawe | - | - | - | 17 (17) | 2 (2) | 50 (26) | 80 (22) | 164 (57) | 273 (107) | 114 (90) | 3 (3) | 3 (3) | 3 (3) | 195 (63) | |
| | Loughor | - | - | - | 2 (2) | 2 (2) | 5 (4) | 5 (2) | 22 (2) | 38 (11) | 17 (6) | 2 (1) | 2 (1) | 2 (1) | 51 (17) | |
| | Tywi | - | - | - | 2 (2) | 2 (2) | 1 (0) | 5 (0) | 24 (8) | 39 (22) | 29 (20) | 2 (1) | 2 (1) | 2 (1) | 720 (341) | |
| | Taf | - | - | - | 2 (2) | 2 (2) | 2 (0) | 10 (1) | 16 (1) | 8 (2) | 2 (1) | 2 (1) | 2 (1) | 2 (1) | 92 (29) | |
| | E-W.Cleddeu | - | - | - | 2 (2) | 1 (1) | 25 (10) | 68 (22) | 103 (42) | 200 (82) | 162 (76) | 1 (1) | 1 (1) | 1 (1) | 102 (53) | |
| | NeVERN | - | - | - | - | - | - | - | - | - | - | - | - | - | 38 (5) | |
| | Telfi | - | - | - | - | - | - | - | - | - | - | - | - | - | 571 (236) | |
| | Aeron | - | - | - | - | - | - | - | - | - | - | - | - | - | 3 (1) | |
| | Ystwyth | - | - | - | - | - | - | - | - | - | - | - | - | - | 3 (0) | |
| | Rheidol | - | - | - | 4 (4) | 4 (4) | 6 (6) | 14 (5) | 12 (4) | 4 (1) | 18 (8) | 18 (8) | 18 (8) | 18 (8) | 62 (32) | |
| | Dyfi | - | - | - | 1 (1) | 3 (3) | 4 (2) | 10 (1) | 30 (7) | 54 (10) | 93 (21) | 93 (21) | 2 (1) | 2 (1) | 197 (46) | |
| | Dysynni | - | - | - | - | - | 5 (3) | 15 (5) | 18 (9) | 31 (14) | 25 (13) | 25 (13) | 2 (1) | 2 (1) | 3 (3) | |
| | Mawddach | - | - | - | - | - | - | - | - | - | - | - | - | - | 94 (44) | |
| | Arro | - | - | - | - | - | - | 2 (2) | 2 (2) | 1 (1) | 1 (0) | 1 (1) | 1 (0) | 1 (0) | 5 (4) | |
| | Dwyrhyd | - | - | - | - | - | 13 (1) | 7 (0) | 7 (0) | 11 (1) | 7 (1) | 3 (2) | 3 (2) | 3 (2) | 21 (6) | |
| | Glaslyn | - | - | - | - | - | - | - | - | - | - | - | - | - | 43 (5) | |
| | Dwyfawir | - | - | - | - | - | - | - | - | - | - | - | - | - | 18 (9) | |
| | Llyfni | - | - | - | - | - | - | - | - | - | - | - | - | - | 1 (0) | |
| | Gwyrfai | - | - | - | - | - | - | - | - | - | - | - | - | - | 1 (0) | |
| Seiont | - | - | - | - | - | - | - | - | - | - | - | - | - | 32 (11) | | |
| Ogwen | - | - | - | - | - | - | - | - | - | - | - | - | - | 121 (39) | | |
| Conwy | - | - | - | - | - | - | - | - | - | - | - | - | - | 190 (83) | | |
| Clwyd | - | - | - | 1 (1) | 2 (2) | 3 (2) | 9 (5) | 48 (18) | 51 (20) | 68 (37) | 68 (37) | 6 (6) | 6 (6) | 176 (122) | | |
| Dee | - | - | - | 9 (9) | 6 (6) | 19 (19) | 38 (25) | 55 (24) | 169 (75) | 372 (159) | 213 (127) | 1 (0) | 1 (0) | 885 (446) | | |
| Others | - | - | - | 0 (0) | 0 (0) | 3 (3) | 4 (0) | 4 (0) | 12 (3) | 11 (6) | 4 (2) | 0 (0) | 0 (0) | 37 (15) | | |
| Total | - | - | - | 25 (25) | 122 (122) | 231 (231) | 474 (437) | 723 (285) | 1138 (495) | 1743 (785) | 1336 (737) | 18 (13) | 1 (1) | 61 (22) | 6122 (3153) | |
| North West | Ribble | 3 (3) | 3 (3) | 3 (3) | 9 (9) | 6 (6) | 27 (14) | 64 (41) | 189 (120) | 294 (197) | 769 (609) | 2 (2) | 1 (1) | 5 (4) | 1372 (1009) | |
| | Wyre | - | - | - | 2 (2) | 2 (2) | 2 (2) | 2 (2) | 3 (1) | 3 (1) | 18 (7) | 18 (7) | 18 (7) | 18 (7) | 25 (12) | |
| | Lune | 1 (1) | 1 (1) | 1 (1) | 2 (2) | 1 (1) | 19 (4) | 46 (10) | 137 (56) | 299 (147) | 866 (533) | 2 (2) | 2 (2) | 1 (0) | 1374 (756) | |
| | Kent | - | - | 1 (1) | 1 (1) | 1 (1) | 19 (9) | 33 (12) | 114 (30) | 163 (55) | 207 (116) | 14 (14) | 1 (0) | 1 (0) | 539 (224) | |
| | Leven | - | - | - | - | - | - | 6 (5) | 7 (5) | 7 (5) | 11 (11) | 11 (11) | 11 (11) | 11 (11) | 38 (35) | |
| | Crake | - | - | - | - | - | - | - | - | - | - | - | - | - | 8 (8) | |
| | Duddon | - | - | - | - | - | - | - | - | - | - | - | - | - | 8 (8) | |
| | Esk (Cumbrian) | - | - | - | - | - | - | - | - | - | - | - | - | - | 125 (67) | |
| | Irt | - | - | - | 2 (2) | 4 (4) | 4 (3) | 4 (3) | 4 (3) | 19 (5) | 36 (19) | 21 (9) | 21 (9) | 21 (9) | 90 (45) | |
| | Calder | - | - | - | 1 (1) | 1 (1) | 3 (2) | 4 (2) | 10 (3) | 25 (6) | 73 (41) | 2 (0) | 2 (0) | 2 (0) | 119 (56) | |
| | Ehen | - | - | - | - | - | - | - | - | - | - | - | - | - | 53 (32) | |
| | Derwent | - | - | - | - | - | - | - | - | - | - | - | - | - | 365 (128) | |
| | Ellen | 2 (2) | 2 (2) | 7 (7) | 1 (1) | 1 (1) | 6 (2) | 43 (4) | 204 (35) | 460 (137) | 552 (320) | 4 (2) | 4 (2) | 6 (3) | 1286 (514) | |
| | Eden | 1 (1) | 8 (8) | 27 (27) | 55 (55) | 39 (39) | 62 (31) | 106 (47) | 274 (96) | 554 (293) | 423 (275) | 1 (0) | 2 (1) | 19 (9) | 1571 (882) | |
| | Esk (Border) | - | - | 3 (3) | 0 (0) | 0 (0) | 27 (13) | 43 (17) | 177 (70) | 305 (150) | 480 (307) | 8 (6) | 8 (6) | 19 (10) | 1065 (579) | |
| | Others | - | - | - | 0 (0) | 0 (0) | 0 (0) | 0 (0) | 0 (0) | 2 (1) | 1 (0) | 0 (0) | 0 (0) | 0 (0) | 5 (1) | |
| | Total | - | - | - | 14 (14) | 44 (44) | 70 (70) | 172 (81) | 353 (139) | 1250 (447) | 2257 (1049) | 3790 (2406) | 31 (26) | 3 (3) | 55 (26) | 8065 (4360) |
| | All regions | - | - | - | 0 (0) | 0 (0) | 0 (0) | 0 (0) | 0 (0) | 0 (0) | 0 (0) | 0 (0) | - | - | 0 (0) | 0 (0) |
| | England and Wales | - | - | - | 1 (1) | 45 (45) | 525 (525) | 1628 (918) | 2070 (916) | 4134 (1925) | 6387 (3181) | 7764 (4755) | 215 (136) | 80 (56) | 165 (80) | 23512 (13035) |

Notes: Reported data from rod licence catch returns only, except where indicated. Totals includes all fish taken and all fish released. Released fish pre June as recorded on return forms.

A dash is used to denote months that fall entirely within the annual close season. Catches from tributaries and from minor rivers with a shared estuary are included under the appropriate main river. The catch from remaining rivers in each region is aggregated and recorded under 'others'. Kelts identified on the catch return are not included in this table.

(a) Data taken from a source other than rod licence returns, ie owners' returns, general licence returns etc.

Table 9 SEA TROUT ROD CATCHES (released total in brackets) - 2008 season

| Environment Agency Region | River | Jan | Feb | Mar | Apr | May | Jun | Jul | Aug | Sep | Oct | Un-known | Total Number | |
|---------------------------|---------------|------------------|-----|--------|----------|-----------|------------|------------|------------|------------|-----------|-------------|--------------|---------|
| North East | Aln | - | - | - | 13 (12) | 1 (0) | 2 (1) | 11 (5) | 13 (8) | 20 (18) | 36 (23) | 3 | 83 (55) | |
| | Coquet | - | - | - | 8 (5) | 9 (4) | 76 (48) | 128 (94) | 79 (25) | 119 (58) | 104 (57) | 3 (1) | 531 (299) | |
| | Tyne | - | - | - | 7 (2) | 18 (11) | 186 (56) | 391 (133) | 516 (179) | 426 (211) | 441 (266) | 50 (21) | 2036 (882) | |
| | Wear | - | - | - | 1 (1) | 43 (34) | 352 (178) | 601 (292) | 419 (235) | 371 (242) | 224 (154) | 63 (41) | 2080 (1178) | |
| | Tees | - | - | - | 0 (0) | 6 (3) | 6 (3) | 10 (2) | 11 (2) | 18 (10) | 21 (16) | 2 (2) | 68 (35) | |
| | Esk (Yorks.) | - | - | - | 0 (0) | 91 (41) | 102 (47) | 123 (69) | 68 (37) | 68 (37) | 99 (67) | 3 (2) | 493 (266) | |
| | Ouse (Yorks.) | - | - | - | 0 (0) | 8 (8) | 2 (0) | 9 (6) | 6 (6) | 1 (1) | 4 (3) | 0 (0) | 2 (1) | |
| | Other | - | - | - | 29 (20) | 85 (59) | 716 (328) | 1252 (579) | 1168 (524) | 1023 (577) | 929 (586) | 121 (67) | 5323 (2740) | |
| | Total | - | - | - | 0 (0) | 0 (0) | 0 (0) | 0 (0) | 0 (0) | 0 (0) | 0 (0) | 0 (0) | 0 (0) | 0 (0) |
| | Thames | - | - | - | 0 (0) | 0 (0) | 0 (0) | 0 (0) | 0 (0) | 0 (0) | 0 (0) | 0 (0) | 0 (0) | 0 (0) |
| | Anglian | - | - | - | 0 (0) | 0 (0) | 0 (0) | 0 (0) | 0 (0) | 0 (0) | 0 (0) | 0 (0) | 0 (0) | 0 (0) |
| | Southern | Rother (Eastern) | - | - | - | 12 (4) | 10 (5) | 2 (1) | 2 (1) | 2 (1) | 1 (1) | 1 (0) | 0 (0) | 26 (11) |
| | | Adur | - | - | - | 6 (6) | 2 (2) | 2 (0) | 2 (0) | 2 (0) | 2 (2) | 1 (1) | 0 (0) | 11 (9) |
| Arun | | - | - | - | 1 (1) | 14 (11) | 7 (5) | 7 (5) | 7 (2) | 11 (10) | 4 (4) | 0 (0) | 6 (2) | |
| Ouse (Sussex) | | - | - | - | 8 (8) | 12 (5) | 8 (5) | 10 (7) | 10 (7) | 10 (5) | 5 (4) | 3 (3) | 44 (32) | |
| Test | | - | - | - | 1 (1) | 21 (14) | 32 (17) | 71 (56) | 100 (72) | 14 (8) | 14 (8) | 2 (1) | 74 (51) | |
| Itchen | | - | - | - | 1 (1) | 24 (18) | 6 (4) | 6 (4) | 6 (4) | 6 (4) | 5 (5) | 0 (0) | 242 (170) | |
| Beaulieu | | - | - | - | 1 (1) | 1 (0) | 1 (0) | 1 (0) | 1 (0) | 1 (0) | 1 (0) | 0 (0) | 36 (27) | |
| Lymington | | - | - | - | 19 (19) | 3 (1) | 6 (6) | 8 (1) | 8 (6) | 5 (4) | 4 (3) | 2 (2) | 9 (2) | |
| Others | | - | - | - | 33 (25) | 60 (36) | 80 (48) | 127 (90) | 143 (101) | 143 (101) | 36 (25) | 7 (6) | 47 (36) | |
| Total | | - | - | - | 10 (4) | 15 (7) | 15 (15) | 21 (21) | 21 (21) | 59 (56) | 63 (52) | 1 (1) | 495 (340) | |
| South West | | - | - | - | 2 (0) | 14 (13) | 5 (3) | 12 (11) | 8 (2) | 13 (5) | 7 (3) | 0 (0) | 186 (156) | |
| Avon (Hants.) | | - | - | - | 1 (1) | 2 (1) | 1 (1) | 1 (1) | 1 (1) | 1 (1) | 1 (1) | 0 (0) | 6 (3) | |
| Stour (Hants.) | | - | - | - | 3 (2) | 7 (5) | 12 (10) | 23 (12) | 14 (7) | 17 (12) | 11 (5) | 0 (0) | 37 (25) | |
| Piddle | - | - | - | 33 (6) | 56 (5) | 79 (15) | 140 (60) | 172 (100) | 98 (52) | 22 (14) | 5 (2) | 50 (27) | | |
| Frome | - | - | - | 14 (2) | 63 (18) | 38 (7) | 71 (42) | 29 (19) | 22 (14) | 6 (6) | 0 (0) | 233 (135) | | |
| Axe | - | - | - | 2 (2) | 14 (2) | 23 (14) | 56 (46) | 48 (26) | 71 (65) | 74 (68) | 3 (2) | 87 (53) | | |
| Otter | - | - | - | 1 (1) | 3 (3) | 7 (6) | 8 (4) | 8 (4) | 21 (18) | 1 (1) | 1 (0) | 42 (33) | | |
| Exe | - | - | - | 33 (6) | 56 (5) | 79 (15) | 140 (60) | 172 (100) | 98 (52) | 22 (14) | 5 (2) | 589 (247) | | |
| Teign | - | - | - | 14 (2) | 63 (18) | 38 (7) | 71 (42) | 29 (19) | 22 (14) | 6 (6) | 5 (0) | 242 (102) | | |
| Dart | - | - | - | 2 (2) | 14 (2) | 23 (14) | 56 (46) | 48 (26) | 71 (65) | 74 (68) | 3 (2) | 291 (225) | | |
| Avon (Devon) | - | - | - | 1 (1) | 1 (0) | 6 (0) | 16 (5) | 8 (6) | 1 (0) | 2 (2) | 3 (3) | 14 (9) | | |
| Erne | - | - | - | 9 (4) | 2 (1) | 18 (7) | 13 (2) | 22 (15) | 8 (2) | 1 (1) | 2 (0) | 37 (16) | | |
| Yealm | - | - | - | 5 (1) | 11 (5) | 48 (8) | 84 (58) | 104 (80) | 25 (22) | 5 (5) | 3 (2) | 75 (32) | | |
| Plym | - | - | - | 1 (0) | 25 (18) | 69 (41) | 93 (65) | 61 (43) | 40 (34) | 9 (6) | 0 (0) | 285 (181) | | |
| Tavy | - | - | - | 3 (2) | 18 (5) | 19 (16) | 54 (47) | 79 (60) | 16 (13) | 2 (1) | 0 (0) | 298 (207) | | |
| Tamar | - | - | - | 1 (0) | 1 (0) | 1 (0) | 3 (3) | 3 (3) | 10 (10) | 19 (14) | 14 (14) | 191 (144) | | |
| Lynher | - | - | - | 10 (1) | 48 (13) | 87 (45) | 194 (109) | 95 (57) | 32 (26) | 19 (13) | 34 (23) | 14 (13) | | |
| Looe | - | - | - | 1 (1) | 1 (1) | 48 (25) | 133 (84) | 109 (63) | 26 (21) | 9 (6) | 6 (5) | 519 (287) | | |
| Fowey | - | - | - | 3 (2) | 19 (14) | 61 (40) | 35 (23) | 33 (22) | 6 (2) | 6 (2) | 1 (1) | 333 (206) | | |
| Camel | - | - | - | 2 (2) | 12 (9) | 116 (59) | 229 (124) | 135 (74) | 52 (37) | 2 (0) | 0 (0) | 219 (143) | | |
| Torrige | - | - | - | 0 (0) | 0 (0) | 4 (1) | 7 (2) | 12 (12) | 6 (6) | 1 (1) | 1 (1) | 570 (315) | | |
| Taw | - | - | - | 0 (0) | 0 (0) | 0 (0) | 0 (0) | 4 (1) | 0 (0) | 0 (0) | 1 (1) | 30 (22) | | |
| Lyn | - | - | - | 2 (2) | 100 (34) | 346 (131) | 1270 (761) | 1013 (635) | 609 (462) | 251 (193) | 65 (40) | 5 (2) | | |
| Others | - | - | - | 0 (0) | 0 (0) | 0 (0) | 0 (0) | 0 (0) | 0 (0) | 0 (0) | 0 (0) | 4353 (2583) | | |
| Total | - | - | - | 0 (0) | 0 (0) | 0 (0) | 2 (0) | 9 (4) | 3 (1) | 9 (9) | 0 (0) | 2 (2) | 25 (16) | |
| Severn | - | - | - | 0 (0) | 0 (0) | 0 (0) | 0 (0) | 0 (0) | 0 (0) | 0 (0) | 0 (0) | 0 (0) | 0 (0) | |
| Midlands | - | - | - | 0 (0) | 0 (0) | 0 (0) | 0 (0) | 0 (0) | 0 (0) | 0 (0) | 0 (0) | 0 (0) | 0 (0) | |

(Continued)

Table 9 (Continued) SEA TROUT ROD CATCHES (released total in brackets) - 2008 season

| Environment Agency Region | River | Jan | Feb | Mar | Apr | May | Jun | Jul | Aug | Sep | Oct | Un-known | Total Number |
|---------------------------|----------------|----------------|------------------|-------------------|--------------------|--------------------|--------------------|--------------------|--------------------|------------------|----------------------|-----------|----------------------|
| Environment Agency Wales | Wye | - | - | 0 (0) | 4 (3) | 6 (5) | 19 (16) | 0 (0) | 7 (2) | 9 (7) | 3 (3) | 0 (0) | 48 (36) |
| | Usk | - | - | 2 (0) | 1 (1) | 28 (23) | 52 (40) | 46 (35) | 24 (14) | 29 (19) | 9 (8) | 0 (0) | 191 (140) |
| | Ebbw | - | - | 0 (0) | 3 (3) | 0 (0) | 1 (1) | 0 (0) | 0 (0) | 0 (0) | 0 (0) | 0 (0) | 4 (4) |
| | Rhymney | - | - | 0 (0) | 5 (3) | 2 (0) | 7 (2) | 7 (5) | 3 (1) | 4 (3) | 0 (0) | 0 (0) | 28 (14) |
| | Taff | - | - | 0 (0) | 7 (3) | 2 (0) | 6 (3) | 83 (44) | 16 (7) | 3 (1) | 5 (3) | 0 (0) | 115 (58) |
| | Ogmore | - | - | 0 (0) | 7 (3) | 8 (1) | 16 (6) | 141 (83) | 151 (107) | 65 (48) | 21 (12) | 9 (5) | 418 (265) |
| | Afan | - | - | 0 (0) | 1 (0) | 1 (0) | 25 (20) | 43 (28) | 62 (51) | 20 (12) | 9 (3) | 1 (0) | 161 (114) |
| | Neath | - | - | 2 (2) | 2 (0) | 22 (7) | 62 (44) | 83 (55) | 79 (46) | 52 (33) | 14 (11) | 1 (1) | 317 (199) |
| | Tawe | - | - | 0 (0) | 5 (2) | 10 (3) | 15 (8) | 38 (20) | 40 (26) | 26 (10) | 8 (7) | 2 (0) | 144 (70) |
| | Loughor | - | - | 0 (0) | 2 (0) | 34 (23) | 48 (16) | 103 (55) | 82 (26) | 39 (7) | 33 (29) | 20 (12) | 361 (168) |
| | Gwendraeth | - | - | 0 (0) | 0 (0) | 3 (1) | 11 (1) | 15 (4) | 27 (2) | 7 (2) | 3 (0) | 1 (0) | 67 (10) |
| | Tywi | - | - | - | 55 (19) | 149 (60) | 450 (160) | 902 (417) | 587 (270) | 305 (169) | 89 (67) | 33 (19) | 2570 (1181) |
| | Taf | - | - | - | 2 (2) | 14 (7) | 87 (53) | 144 (67) | 119 (84) | 62 (25) | 17 (13) | 2 (1) | 447 (195) |
| | E+W.Cleddau | - | - | - | 0 (0) | 21 (9) | 108 (56) | 295 (194) | 180 (126) | 58 (46) | 17 (13) | 2 (0) | 681 (444) |
| | NeVERN | - | - | - | 0 (0) | 15 (0) | 147 (10) | 208 (20) | 186 (26) | 90 (21) | 27 (9) | 1 (1) | 674 (87) |
| | Teifi | - | - | - | 23 (2) | 51 (31) | 280 (141) | 615 (333) | 410 (245) | 207 (163) | 99 (92) | 61 (12) | 1746 (1019) |
| | Aeron | - | - | - | 3 (3) | 3 (0) | 11 (3) | 70 (16) | 45 (14) | 11 (0) | 2 (1) | 6 (3) | 151 (43) |
| | Ystwyth | - | - | - | 0 (0) | 0 (0) | 13 (1) | 40 (25) | 52 (36) | 18 (14) | 9 (7) | 0 (0) | 132 (83) |
| | Rheidol | - | - | - | 0 (0) | 5 (4) | 47 (26) | 74 (41) | 67 (42) | 20 (17) | 15 (9) | 3 (3) | 231 (142) |
| | Dyfi | - | - | 1 (1) | 6 (5) | 33 (27) | 180 (88) | 422 (272) | 314 (252) | 183 (164) | 74 (57) | 2 (0) | 1215 (866) |
| | Dysynni | - | - | 0 (0) | 38 (34) | 47 (45) | 35 (28) | 55 (38) | 58 (43) | 69 (50) | 7 (6) | 6 (1) | 315 (245) |
| | Mawddach | - | - | 0 (0) | 2 (2) | 9 (8) | 57 (46) | 107 (86) | 86 (69) | 57 (51) | 6 (6) | 1 (1) | 325 (269) |
| | Arro | - | - | 0 (0) | 0 (0) | 0 (0) | 4 (4) | 6 (5) | 12 (9) | 2 (0) | 0 (0) | 0 (0) | 24 (18) |
| | Dwyrhyd | - | - | 0 (0) | 0 (0) | 0 (0) | 1 (0) | 7 (6) | 34 (23) | 18 (9) | 4 (0) | 14 (7) | 78 (45) |
| | Glaslyn | - | - | 21 (6) | 139 (68) | 91 (51) | 15 (10) | 34 (21) | 49 (34) | 58 (39) | 8 (7) | 105 (85) | 520 (321) |
| | Dwyfawr | - | - | 0 (0) | 0 (0) | 0 (0) | 9 (8) | 64 (42) | 51 (33) | 17 (5) | 4 (1) | 0 (0) | 145 (89) |
| | Llyfni | - | - | 0 (0) | 0 (0) | 0 (0) | 0 (0) | 15 (7) | 23 (10) | 21 (8) | 0 (0) | 4 (0) | 63 (25) |
| | Gwyrfa | - | - | 0 (0) | 0 (0) | 0 (0) | 0 (0) | 0 (0) | 0 (0) | 0 (0) | 0 (0) | 0 (0) | 0 (0) |
| Selont | - | - | 0 (0) | 0 (0) | 0 (0) | 0 (0) | 7 (6) | 18 (14) | 3 (1) | 0 (0) | 0 (0) | 28 (21) | |
| Ogwen | - | - | 0 (0) | 1 (1) | 0 (0) | 4 (1) | 21 (8) | 23 (10) | 7 (1) | 9 (5) | 0 (0) | 65 (26) | |
| Conwy | - | - | 0 (0) | 1 (1) | 2 (0) | 38 (31) | 145 (110) | 133 (105) | 83 (55) | 28 (11) | 4 (0) | 434 (313) | |
| Clwyd | - | - | 2 (2) | 3 (3) | 31 (27) | 140 (105) | 340 (237) | 251 (193) | 169 (126) | 4 (3) | 9 (6) | 949 (702) | |
| Dee | - | - | 0 (0) | 1 (1) | 2 (2) | 10 (7) | 78 (57) | 45 (29) | 42 (29) | 12 (12) | 2 (0) | 192 (137) | |
| Others | - | - | 0 (0) | 0 (0) | 0 (0) | 14 (7) | 23 (9) | 56 (25) | 26 (14) | 7 (6) | 5 (1) | 131 (62) | |
| Total | | 28 (11) | 303 (156) | 589 (337) | 1912 (942) | 4231 (2347) | 3290 (1918) | 1780 (1149) | 543 (394) | 294 (158) | 12970 (7411) | 0 | 826 (591) |
| North West | Ribble | - | - | 1 (0) | 26 (22) | 89 (58) | 348 (235) | 206 (151) | 110 (87) | 46 (38) | 0 (0) | 0 (0) | 826 (591) |
| | Wyre | - | - | 0 (0) | 0 (0) | 0 (0) | 3 (1) | 2 (2) | 6 (4) | 5 (4) | 0 (0) | 0 (0) | 16 (11) |
| | Lune | - | - | 6 (6) | 71 (67) | 154 (101) | 371 (228) | 239 (168) | 129 (77) | 94 (71) | 4 (2) | 4 (2) | 1068 (720) |
| | Kent | - | - | 2 (1) | 0 (0) | 22 (12) | 144 (92) | 108 (70) | 37 (17) | 21 (13) | 1 (1) | 1 (1) | 335 (206) |
| | Leven | - | - | 3 (1) | 1 (0) | 3 (0) | 12 (7) | 8 (3) | 7 (2) | 0 (0) | 0 (0) | 0 (0) | 34 (13) |
| | Crake | - | - | 0 (0) | 0 (0) | 0 (0) | 3 (0) | 1 (0) | 1 (0) | 0 (0) | 0 (0) | 0 (0) | 5 (1) |
| | Duddon | - | - | 0 (0) | 0 (0) | 22 (18) | 65 (58) | 75 (55) | 16 (11) | 4 (4) | 4 (4) | 1 (0) | 183 (146) |
| | Esk (Cumbrian) | - | - | 0 (0) | 0 (0) | 4 (1) | 9 (7) | 12 (7) | 3 (2) | 0 (0) | 0 (0) | 1 (1) | 29 (18) |
| | Irt | - | - | 0 (0) | 0 (0) | 1 (0) | 1 (0) | 4 (4) | 44 (40) | 10 (10) | 16 (16) | 0 (0) | 84 (70) |
| | Calder | - | - | 0 (0) | 0 (0) | 0 (0) | 0 (0) | 1 (0) | 1 (0) | 2 (2) | 4 (4) | 0 (0) | 7 (6) |
| | Ehen | - | - | 0 (0) | 0 (0) | 7 (6) | 45 (41) | 196 (193) | 35 (34) | 70 (68) | 0 (0) | 0 (0) | 353 (342) |
| | Derwent | - | - | 1 (0) | 12 (10) | 22 (18) | 49 (39) | 29 (13) | 22 (8) | 23 (19) | 1 (0) | 0 (0) | 159 (107) |
| | Ellen | - | - | 0 (0) | 0 (0) | 2 (2) | 13 (8) | 15 (8) | 3 (1) | 2 (2) | 0 (0) | 0 (0) | 35 (21) |
| | Eden | - | - | 3 (3) | 19 (12) | 66 (51) | 39 (22) | 30 (17) | 15 (11) | 13 (10) | 13 (10) | 1 (1) | 186 (127) |
| | Esk (Border) | - | - | 0 (0) | 55 (33) | 303 (190) | 373 (208) | 273 (160) | 120 (90) | 92 (66) | 5 (3) | 5 (3) | 1221 (750) |
| | Others | - | - | 0 (0) | 0 (0) | 0 (0) | 0 (0) | 0 (0) | 0 (0) | 0 (0) | 0 (0) | 0 (0) | 0 (0) |
| | Total | | 16 (11) | 184 (144) | 695 (457) | 1487 (951) | 1239 (887) | 516 (356) | 390 (315) | 14 (8) | 4541 (3129) | 0 | 4541 (3129) |
| All regions | Unknown | - | - | 0 (0) | 0 (0) | 0 (0) | 0 (0) | 0 (0) | 0 (0) | 0 (0) | 0 (0) | 0 (0) | 0 (0) |
| England and Wales | | 48 (25) | 457 (230) | 1237 (696) | 4082 (2087) | 8329 (4690) | 6840 (4055) | 4080 (2654) | 2149 (1512) | 485 (269) | 27707 (16219) | 0 | 27707 (16219) |

Notes:
 Reported data from rod licence catch returns only. Totals includes all fish taken and all fish released.
 A dash is used to denote months that fall entirely within the annual close season.
 Catches from tributaries and from minor rivers with a shared estuary are included under the appropriate main river. The catch from remaining rivers in each region is aggregated and recorded under 'others'.

Table 10 ROD CAUGHT SALMON AND SEA TROUT, AVERAGE WEIGHT (kg) - 2008 season

| | | Salmon | | | | Sea trout | | | |
|--------------|---|--------|-------|---------------|----------|-----------|-------|---------------|----------|
| Environment | | Total | Total | Total | Ave. | Total | Total | Total | Ave. |
| Agency | River | sample | catch | est. wt. (kg) | wt. (kg) | sample | catch | est. wt. (kg) | wt. (kg) |
| Region | | | | | | | | | |
| North East | Coquet | 842 | 842 | 2761 | 3.3 | 531 | 531 | 819 | 1.5 |
| | Tyne | 3389 | 3389 | 15685 | 4.6 | 2033 | 2036 | 3821 | 1.9 |
| | Wear | 959 | 959 | 3472 | 3.6 | 2077 | 2080 | 4042 | 1.9 |
| | Tees | 267 | 267 | 1160 | 4.3 | 68 | 68 | 118 | 1.7 |
| | Esk (Yorks.) | 159 | 159 | 536 | 3.4 | 493 | 493 | 727 | 1.5 |
| Southern | Test | 159 | 159 | 469 | 2.9 | 74 | 74 | 105 | 1.4 |
| | Itchen | 176 | 176 | 535 | 3.0 | 242 | 242 | 278 | 1.1 |
| South West | Avon (Hants.) | 24 | 24 | 134 | 5.6 | 187 | 187 | 106 | 0.6 |
| | Frome | 46 | 46 | 173 | 3.8 | 50 | 50 | 78 | 1.6 |
| | Axe | 23 | 23 | 62 | 2.7 | 233 | 233 | 293 | 1.3 |
| | Exe | 540 | 540 | 1686 | 3.1 | 42 | 42 | 62 | 1.5 |
| | Teign | 214 | 214 | 689 | 3.2 | 589 | 589 | 448 | 0.8 |
| | Dart | 124 | 124 | 415 | 3.3 | 242 | 242 | 310 | 1.3 |
| | Avon (Devon) | 61 | 61 | 293 | 4.8 | 290 | 290 | 190 | 0.7 |
| | Tavy | 81 | 81 | 293 | 3.6 | 285 | 285 | 187 | 0.7 |
| | Tamar | 358 | 358 | 1152 | 3.2 | 298 | 298 | 207 | 0.7 |
| | Lynher | 67 | 67 | 219 | 3.3 | 191 | 191 | 128 | 0.7 |
| | Fowey | 190 | 190 | 605 | 3.2 | 518 | 519 | 419 | 0.8 |
| | Camel | 358 | 358 | 1175 | 3.3 | 333 | 333 | 201 | 0.6 |
| | Torr ridge | 119 | 119 | 456 | 3.8 | 219 | 219 | 204 | 0.9 |
| | Taw | 287 | 287 | 961 | 3.3 | 570 | 570 | 499 | 0.9 |
| Lyn | 117 | 117 | 331 | 2.8 | 30 | 30 | 26 | 0.9 | |
| Midlands | Severn | 294 | 294 | 1365 | 4.6 | 25 | 25 | 17 | 0.7 |
| Environment | Wye | 766 | 766 | 3651 | 4.8 | 47 | 48 | 45 | 0.9 |
| Agency Wales | Usk | 1157 | 1157 | 4976 | 4.3 | 189 | 191 | 173 | 0.9 |
| | Taff | 21 | 21 | 81 | 3.9 | 115 | 115 | 63 | 0.6 |
| | Ogmore | 76 | 76 | 218 | 2.9 | 418 | 418 | 449 | 1.1 |
| | Tawe | 195 | 195 | 609 | 3.1 | 144 | 144 | 178 | 1.2 |
| | Tywi | 720 | 720 | 2608 | 3.6 | 2568 | 2570 | 3436 | 1.3 |
| | Taf | 92 | 92 | 287 | 3.1 | 447 | 447 | 387 | 0.9 |
| | E+W.Cleddau | 102 | 102 | 300 | 2.9 | 681 | 681 | 439 | 0.6 |
| | NeVERN | 38 | 38 | 133 | 3.5 | 673 | 674 | 396 | 0.6 |
| | Teifi | 571 | 571 | 2074 | 3.6 | 1743 | 1746 | 1210 | 0.7 |
| | Aeron | 3 | 3 | 9 | 3.0 | 151 | 151 | 88 | 0.6 |
| | Rheidol | 62 | 62 | 183 | 3.0 | 231 | 231 | 204 | 0.9 |
| | Dyfi | 197 | 197 | 700 | 3.6 | 1215 | 1215 | 1149 | 0.9 |
| | Mawddach | 94 | 94 | 340 | 3.6 | 325 | 325 | 262 | 0.8 |
| | Glaslyn | 43 | 43 | 127 | 3.0 | 520 | 520 | 340 | 0.7 |
| | Ogwen | 121 | 121 | 322 | 2.7 | 65 | 65 | 80 | 1.2 |
| Conwy | 190 | 190 | 637 | 3.4 | 434 | 434 | 349 | 0.8 | |
| Clwyd | 176 | 176 | 509 | 2.9 | 948 | 949 | 631 | 0.7 | |
| Dee | 885 | 885 | 3306 | 3.7 | 191 | 192 | 171 | 0.9 | |
| North West | Ribble | 1372 | 1372 | 5188 | 3.8 | 825 | 826 | 642 | 0.8 |
| | Lune | 1374 | 1374 | 4880 | 3.6 | 1068 | 1068 | 915 | 0.9 |
| | Kent | 539 | 539 | 1723 | 3.2 | 335 | 335 | 296 | 0.9 |
| | Esk (Cumbrian) | 90 | 90 | 327 | 3.6 | 29 | 29 | 26 | 0.9 |
| | Ehen | 365 | 365 | 1177 | 3.2 | 353 | 353 | 186 | 0.5 |
| | Derwent | 1286 | 1286 | 4674 | 3.6 | 158 | 159 | 131 | 0.8 |
| | Ellen | 30 | 30 | 99 | 3.3 | 35 | 35 | 30 | 0.9 |
| | Eden | 1571 | 1571 | 6012 | 3.8 | 186 | 186 | 164 | 0.9 |
| Esk (Border) | 1065 | 1065 | 3913 | 3.7 | 1219 | 1221 | 1111 | 0.9 | |
| Notes: | All data taken from rod licence returns including rivers Test, Itchen, Avon (Hants) and Wye | | | | | | | | |
| | Total Weights calculated to nearest whole kg | | | | | | | | |
| | Catches from tributaries and from minor rivers with a shared estuary are included under the appropriate main river. | | | | | | | | |
| | | | | | | | | | |

Table 11 Number of rod caught salmon in weight categories (lb and kg) - 2008

| Environment Agency Region | River | 0-8 lb (0-3.6 kg) | 8-14 lb (3.6-6.4 kg) | 14-22 lb (6.4-10 kg) | >22 lb (>10 kg) |
|---------------------------|--|----------------------|-------------------------|-------------------------|--------------------|
| North East | Coquet | 577 | 245 | 19 | 1 |
| | Tyne | 1239 | 1594 | 521 | 35 |
| | Wear | 593 | 303 | 62 | 1 |
| | Tees | 112 | 131 | 24 | 0 |
| | Esk (Yorks.) | 98 | 55 | 6 | 0 |
| | Others | 6 | 11 | 1 | 0 |
| Southern | Test | 136 | 21 | 2 | 0 |
| | Itchen | 148 | 27 | 0 | 1 |
| | Others | 2 | 1 | 0 | 0 |
| South West | Avon (Hants.) | 5 | 10 | 8 | 1 |
| | Frome | 26 | 20 | 0 | 0 |
| | Axe | 21 | 2 | 0 | 0 |
| | Exe | 394 | 144 | 2 | 0 |
| | Teign | 147 | 64 | 3 | 0 |
| | Dart | 81 | 43 | 0 | 0 |
| | Avon (Devon) | 23 | 27 | 9 | 2 |
| | Tavy | 47 | 31 | 3 | 0 |
| | Tamar | 246 | 108 | 4 | 0 |
| | Lynher | 49 | 17 | 1 | 0 |
| | Fowey | 141 | 44 | 5 | 0 |
| | Camel | 254 | 97 | 7 | 0 |
| | Torridge | 70 | 42 | 6 | 1 |
| | Taw | 187 | 98 | 2 | 0 |
| | Lyn | 97 | 19 | 1 | 0 |
| Others | 25 | 9 | 0 | 0 | |
| Midlands | Severn | 83 | 181 | 28 | 2 |
| Environment Agency Wales | Wye | 208 | 468 | 83 | 7 |
| | Usk | 428 | 638 | 85 | 6 |
| | Taff | 11 | 10 | 0 | 0 |
| | Ogmore | 57 | 18 | 1 | 0 |
| | Tawe | 147 | 46 | 2 | 0 |
| | Tywi | 428 | 261 | 31 | 0 |
| | Taf | 65 | 26 | 1 | 0 |
| | E+W.Cleddau | 83 | 19 | 0 | 0 |
| | Nevern | 25 | 11 | 2 | 0 |
| | Teifi | 359 | 191 | 20 | 1 |
| | Aeron | 3 | 0 | 0 | 0 |
| | Rheidol | 52 | 9 | 1 | 0 |
| | Dyfi | 125 | 64 | 8 | 0 |
| | Mawddach | 54 | 38 | 2 | 0 |
| | Glaslyn | 28 | 15 | 0 | 0 |
| | Ogwen | 103 | 17 | 1 | 0 |
| | Conwy | 132 | 50 | 7 | 1 |
| | Clwyd | 143 | 30 | 3 | 0 |
| Dee | 542 | 282 | 57 | 4 | |
| Others | 193 | 81 | 6 | 0 | |
| North West | Ribble | 850 | 440 | 75 | 7 |
| | Lune | 948 | 345 | 78 | 3 |
| | Kent | 410 | 114 | 14 | 1 |
| | Esk (Cumbrian) | 58 | 28 | 4 | 0 |
| | Ehen | 278 | 78 | 9 | 0 |
| | Derwent | 845 | 359 | 81 | 1 |
| | Ellen | 21 | 7 | 2 | 0 |
| | Eden | 970 | 463 | 134 | 4 |
| | Esk (Border) | 686 | 307 | 71 | 1 |
| | Others | 306 | 60 | 6 | 1 |
| Notes: | All data taken from rod licence returns Catches from tributaries and from minor rivers with a shared estuary are included under the appropriate main river. | | | | |

Table 12 Number of rod caught sea trout in weight categories (lb and kg) - 2008

| Environment Agency Region | River | 0-1 lb | 1-4 lb | >4 lb |
|---------------------------|---|-------------|---------------|-----------|
| | | (0-0.45 kg) | (0.45-1.8 kg) | (>1.8 kg) |
| North East | Coquet | 180 | 179 | 172 |
| | Tyne | 163 | 1130 | 740 |
| | Wear | 208 | 986 | 883 |
| | Tees | 8 | 35 | 25 |
| | Esk (Yorks.) | 70 | 301 | 122 |
| | Others | 54 | 43 | 18 |
| Southern | Ouse (Sussex) | 0 | 5 | 39 |
| | Test | 13 | 45 | 16 |
| | Itchen | 101 | 95 | 46 |
| | Beaulieu | 9 | 23 | 4 |
| | Lymington | 1 | 6 | 2 |
| | Others | 23 | 24 | 42 |
| South West | Avon (Hants.) | 143 | 37 | 7 |
| | Frome | 13 | 22 | 15 |
| | Axe | 52 | 136 | 45 |
| | Exe | 12 | 18 | 12 |
| | Teign | 310 | 251 | 28 |
| | Dart | 35 | 174 | 33 |
| | Avon (Devon) | 185 | 91 | 14 |
| | Tavy | 188 | 88 | 9 |
| | Tamar | 173 | 116 | 9 |
| | Lynher | 120 | 63 | 8 |
| | Fowey | 290 | 193 | 35 |
| | Camel | 239 | 81 | 13 |
| | Torridge | 84 | 121 | 14 |
| | Taw | 238 | 284 | 48 |
| | Lyn | 20 | 7 | 3 |
| | Others | 112 | 132 | 31 |
| Midlands | Severn | 16 | 9 | 0 |
| Environment Agency Wales | Wye | 33 | 10 | 4 |
| | Usk | 108 | 64 | 17 |
| | Taff | 89 | 24 | 2 |
| | Ogmore | 174 | 175 | 69 |
| | Tawe | 56 | 55 | 33 |
| | Tywi | 671 | 1327 | 570 |
| | Taf | 196 | 210 | 41 |
| | E+W.Cleddau | 434 | 222 | 25 |
| | Nevern | 390 | 271 | 12 |
| | Teifi | 1128 | 525 | 90 |
| | Aeron | 88 | 61 | 2 |
| | Rheidol | 123 | 83 | 25 |
| | Dyfi | 684 | 389 | 142 |
| | Mawddach | 212 | 87 | 26 |
| | Glaslyn | 355 | 142 | 23 |
| | Ogwen | 17 | 41 | 7 |
| | Conwy | 255 | 143 | 36 |
| | Clwyd | 559 | 354 | 35 |
| | Dee | 95 | 76 | 20 |
| | Others | 1020 | 672 | 162 |
| North West | Ribble | 393 | 399 | 33 |
| | Lune | 474 | 518 | 76 |
| | Kent | 127 | 187 | 21 |
| | Esk (Cumbrian) | 10 | 17 | 2 |
| | Ehen | 290 | 58 | 5 |
| | Derwent | 73 | 75 | 10 |
| | Ellen | 17 | 15 | 3 |
| | Eden | 93 | 74 | 19 |
| | Esk (Border) | 556 | 545 | 118 |
| | Others | 250 | 68 | 11 |
| Notes: | All data taken from rod licence returns | | | |
| | Catches from tributaries and from minor rivers with a shared estuary are included under the appropriate main river. | | | |

Table 13 SUMMARY OF SALMON NET CATCHES, 1998 - 2008

| Environment Agency Region | River/ Fishery | Fishing Method | 1998 | 1999 | 2000 | 2001 | 2002 | 2003 | 2004 | 2005 | 2006 | 2007 | 2008 | | |
|---------------------------|----------------|-------------------|-----------------------|------------------------|-------|-------|-------|-------|-------|-------|-------|-------|-------|-------|------|
| North East Northumbria | Coastal (N) | Drift nets | 10273 | 14903 | 27093 | 21805 | 18490 | 5134 | 5323 | 5243 | 3887 | 4423 | 3111 | | |
| | | T nets | 818 | 1801 | 2789 | 3264 | 2811 | 4480 | 4461 | 3129 | 3250 | 1839 | 2154 | | |
| North East Yorkshire | Coastal (S) | Drift nets | 5195 | 8270 | 9679 | 8240 | 7174 | 0 | 0 | 0 | 0 | 0 | 0 | | |
| | | T nets | 12 | 39 | 74 | 80 | 0 | 47 | 32 | 16 | 23 | 106 | 84 | | |
| | Coastal | Drift nets | 1860 | 1639 | 3287 | 2329 | 2021 | 377 | 598 | 364 | 153 | 471 | 538 | | |
| | | T or J nets | 107 | 181 | 432 | 397 | 484 | 397 | 603 | 235 | 253 | 252 | 354 | | |
| | Whole area | Total | 18265 | 26833 | 43354 | 36115 | 30980 | 10435 | 11017 | 8987 | 7566 | 7091 | 6241 | | |
| Anglian | Coastal | Drift nets | 0 | 6 | 0 | 0 | 112 | 20 | 53 | 12 | 10 | 4 | 9 | | |
| | | Other nets (var.) | 3 | 0 | 0 | 0 | 0 | 4 | 0 | 3 | 5 | 3 | 0 | | |
| | Whole area | Total | 3 | 6 | 0 | 0 | 112 | 24 | 53 | 15 | 15 | 7 | 9 | | |
| Southern | Hants area | Seine nets | 0 | 0 | 0 | 0 | 0 | 0 | 0 | 0 | 0 | 0 | 0 | | |
| | | Itchen | 0 | 0 | 0 | 0 | 0 | 0 | 0 | 0 | 0 | 0 | 0 | | |
| | Whole area | Total | 0 | 0 | 0 | 0 | 0 | 0 | 0 | 0 | 0 | 0 | 0 | | |
| South West | Avon + Stour | Seine nets | 86 | 87 | 153 | 131 | 204 | 66 | 108 | 56 | 57 | 55 | 268 | | |
| | | Poole Harbour | 27 | 0 | 0 | 8 | 19 | 18 | 5 | 6 | 8 | 2 | 8 | | |
| | Parrett | Dip nets | 0 | 0 | 0 | 0 | 0 | 0 | 0 | 0 | 0 | 0 | 0 | | |
| | | Putcher ranks | 15 | 6 | 0 | 0 | 0 | 0 | 0 | 0 | 0 | 0 | 0 | | |
| | | River total | 15 | 6 | 0 | 0 | 0 | 0 | 0 | 0 | 0 | 0 | 0 | | |
| | Exe | Seine nets | 287 | 350 | 474 | 200 | 514 | 277 | 414 | 287 | 189 | 102 | 137 | | |
| | | Teign | 414 | 68 | 101 | 95 | 221 | 265 | 250 | 84 | 111 | 18 | 103 | | |
| | Dart | Seine nets | 251 | 126 | 168 | 169 | 113 | 197 | 296 | 63 | 47 | 15 | 54 | | |
| | | Avon | 0 | 0 | 0 | 0 | 0 | 0 | 0 | 0 | 0 | 0 | 0 | | |
| | Camel | Fixed Engine | 0 | 0 | 0 | 0 | 0 | 0 | 0 | 0 | 0 | 0 | 0 | | |
| | | Drift nets | 119 | 49 | 210 | 158 | 70 | 83 | 14 | 7 | 0 | 0 | 0 | | |
| | Tavy | Seine nets | 0 | 8 | 11 | 20 | 5 | 13 | 0 | 0 | 0 | 0 | 0 | | |
| | | Tamar | 58 | 251 | 287 | 176 | 137 | 219 | 0 | 0 | 0 | 0 | 0 | | |
| | Tavy/Tamar (b) | Seine net | | | | | | | | | | | | | |
| | | Lynher | Seine nets | 73 | 50 | 2 | 11 | 11 | 29 | 0 | 0 | 0 | 0 | | |
| | Fowey | Seine nets | 12 | 2 | 13 | 7 | 7 | 1 | 3 | 4 | 0 | 0 | 0 | | |
| | | Taw/Torrige | Seine nets | 398 | 608 | 752 | 819 | 103 | 276 | 205 | 65 | 65 | 19 | | |
| | Lyn | Fixed Engine | 19 | 0 | 0 | 0 | 0 | 0 | 0 | 0 | 0 | 0 | 0 | | |
| | | Whole area | Total | 1759 | 1605 | 2171 | 1794 | 1404 | 1444 | 1295 | 572 | 477 | 211 | 587 | |
| | Midlands | Severn | Seine nets | 68 | 35 | 41 | 5 | 20 | 38 | 43 | 25 | 13 | 0 | 0 | |
| Lave nets | | | 174 | 190 | 228 | 186 | 116 | 295 | 380 | 135 | 138 | 68 | 100 | | |
| Fixed Engines (a) | | | 832 | 764 | 704 | 836 | 1054 | 1207 | 346 | 778 | 713 | 608 | 771 | | |
| Whole area | | Total (a) | 1074 | 989 | 973 | 1027 | 1190 | 1540 | 769 | 938 | 864 | 676 | 871 | | |
| Environment Agency Wales | Wye | Lave nets | 3 | 3 | 11 | 2 | 6 | 6 | 8 | 7 | 6 | 6 | 4 | | |
| | | Usk | Drift nets | 572 | 726 | 0 | 0 | 0 | 0 | 0 | 0 | 0 | 0 | 0 | |
| | | | Putcher rank | 205 | 260 | 0 | 0 | 0 | 0 | 0 | 0 | 0 | 0 | 0 | |
| | | | River total | 777 | 986 | 0 | 0 | 0 | 0 | 0 | 0 | 0 | 0 | 0 | |
| | Tywi | Seine nets | 35 | 15 | 25 | 16 | 45 | 32 | 71 | 26 | 20 | 16 | 16 | | |
| | | Coracle nets | 4 | 6 | 29 | 46 | 63 | 41 | 35 | 20 | 25 | 16 | 29 | | |
| | | River total | 39 | 22 | 54 | 62 | 108 | 73 | 106 | 46 | 45 | 32 | 45 | | |
| | Taf | Wade net | 0 | 0 | 1 | 0 | 0 | 0 | 0 | 0 | 0 | 0 | 0 | | |
| | | Coracle net | 3 | 8 | 4 | 0 | 0 | 0 | 1 | 1 | 0 | 0 | 0 | | |
| | | River total | 3 | 8 | 5 | 0 | 0 | 0 | 1 | 1 | 0 | 0 | 0 | | |
| | S.W.Coastal | Wade nets | 0 | 0 | 0 | 0 | 0 | 0 | 0 | 0 | 0 | 0 | 0 | | |
| | | Seine nets | 0 | 0 | 0 | 0 | 0 | 0 | 0 | 0 | 0 | 0 | 0 | | |
| | | River total | 0 | 0 | 0 | 0 | 0 | 0 | 0 | 0 | 0 | 0 | 0 | | |
| | E+W.Cleddau | Compass nets | 13 | 41 | 90 | 60 | 28 | 27 | 25 | 9 | 11 | 8 | 3 | | |
| | | Nevern | Seine net | 13 | 0 | 0 | 0 | 0 | 0 | 0 | 0 | 0 | 0 | | |
| | | Teifi | Seine nets | 111 | 3 | 79 | 0 | 17 | 4 | 1 | 103 | 85 | 1 | | |
| | Dyfi | Coracle nets | 46 | 100 | 85 | 60 | 82 | 88 | 51 | 85 | 45 | 15 | 24 | | |
| | | River total | 157 | 103 | 164 | 60 | 99 | 92 | 52 | 188 | 130 | 16 | 65 | | |
| | | Seine nets | 7 | 20 | 19 | 21 | 75 | 1 | 0 | 8 | 0 | 2 | 0 | | |
| | Dysynni | Seine net | 8 | 10 | 0 | 24 | 2 | 15 | 5 | 5 | 0 | 0 | 0 | | |
| | | Mawddach | Seine nets | 0 | 0 | 0 | 1 | 0 | 0 | 1 | 2 | 0 | 0 | | |
| | Glaslyn | Seine nets | 20 | 11 | 3 | 0 | 6 | 0 | 0 | 0 | 0 | 0 | 0 | | |
| | | Dwyfawr | Seine nets | 0 | 0 | 0 | 0 | 0 | 0 | 0 | 0 | 0 | 0 | | |
| | N. Caernarfon | Seine nets | 0 | 0 | 0 | 0 | 0 | 0 | 0 | 0 | 0 | 0 | 0 | | |
| | | Seiont/Gwyrfa | Seine nets | 0 | 0 | 0 | 0 | 0 | 0 | 0 | 0 | 0 | 0 | | |
| | Ogwen | Seine nets | 70 | 109 | 85 | 0 | 0 | 0 | 0 | 0 | 0 | 0 | 0 | | |
| | | Conwy | Basket trap | 17 | 0 | 10 | 4 | 0 | 0 | 0 | 0 | 0 | 0 | | |
| | Clwyd | Seine nets | 9 | 14 | 20 | 13 | 0 | 37 | 28 | 46 | 18 | 11 | 0 | | |
| | | River total | 26 | 14 | 30 | 17 | 0 | 28 | 46 | 46 | 18 | 11 | 0 | | |
| | | Sling nets | 0 | 0 | 0 | 0 | 0 | 0 | 0 | 0 | 0 | 0 | 0 | | |
| | Dee | Trammel nets | 663 | 525 | 356 | 500 | 529 | 365 | 331 | 303 | 291 | 471 | 0 | | |
| | | Seine nets | 501 | 495 | 187 | 250 | 421 | 359 | 414 | 507 | 176 | 67 | 43 | | |
| | | River total | 1164 | 1020 | 543 | 750 | 950 | 724 | 745 | 810 | 467 | 538 | 43 | | |
| | Whole area | Total | 2300 | 2347 | 1004 | 997 | 1275 | 975 | 970 | 1121 | 679 | 613 | 160 | | |
| | North West | Ribble | Drift nets | 118 | 210 | 176 | 130 | 228 | 155 | 295 | 250 | 119 | 266 | 64 | |
| | | | Lune | Haaf nets | 389 | 529 | 455 | 336 | 271 | 369 | 185 | 662 | 418 | 256 | 86 |
| | | | | Drift nets | 525 | 252 | 1072 | 743 | 1204 | 400 | 473 | 1350 | 686 | 486 | 238 |
| | | | | Seine net | 3 | 22 | 0 | 42 | 56 | 41 | 31 | 59 | 40 | 18 | 17 |
| | | | River total | 917 | 803 | 1527 | 1121 | 1531 | 810 | 689 | 2071 | 1144 | 760 | 341 | |
| | | Kent | Lave nets | 20 | 55 | 79 | 159 | 32 | 40 | 8 | 90 | 63 | 4 | 0 | |
| | | | Leven | Lave nets | 18 | 20 | 37 | 7 | 5 | 3 | 5 | 15 | 19 | 4 | |
| | | Duddon | Seine net | * | * | * | * | * | * | * | * | * | * | * | |
| | | | S&W Cumbria area | Drift nets + var. nets | 39 | 45 | 157 | 232 | 325 | 98 | 0 | 0 | 0 | 0 | |
| | | Eden + Esk area | Haaf nets + var. nets | 650 | 1254 | 1520 | 1661 | 1197 | 1695 | 1480 | 2752 | 2632 | 1290 | 575 | |
| | | | Whole area | Total | 1778 | 2387 | 3496 | 3310 | 3318 | 2801 | 2477 | 5178 | 3977 | 2324 | 981 |
| | | England and Wales | | | 25179 | 34146 | 50998 | 43243 | 38279 | 17219 | 16581 | 16811 | 13578 | 10922 | 8849 |

(a) 1993 Midlands fixed engine, Midlands total and total England/Wales net catch amended from earlier reports

N = North
S = South

(b) Catches included under Tavy and Tamar as appropriate

Table 14 SUMMARY OF SEA TROUT NET CATCHES, 1998 - 2008

| Environment Agency Region | River/ Fishery | Fishing Method | 1998 | 1999 | 2000 | 2001 | 2002 | 2003 | 2004 | 2005 | 2006 | 2007 | 2008 | | |
|---------------------------|----------------|------------------------|--------------|------------|-------|-------|-------|-------|-------|-------|-------|-------|-------|------|-----|
| North East Northumbria | Coastal (N) | Drift nets | 4653 | 7881 | 10400 | 9279 | 7489 | 2433 | 2041 | 1880 | 2731 | 2545 | 2578 | | |
| | | T nets | 4645 | 9380 | 10894 | 10666 | 8287 | 10396 | 8462 | 7373 | 9899 | 6026 | 9800 | | |
| North East Yorkshire | Coastal (S) | Drift nets | 4609 | 4534 | 6370 | 5565 | 5350 | 0 | 0 | 0 | 0 | 0 | 0 | | |
| | | T nets | 207 | 1381 | 823 | 774 | 0 | 123 | 33 | 49 | 92 | 127 | 241 | | |
| | Coastal | Drift nets | 2077 | 2644 | 2651 | 2907 | 2403 | 278 | 339 | 294 | 258 | 545 | 996 | | |
| | | T or J nets | 6069 | 6638 | 8249 | 6741 | 6921 | 8541 | 8867 | 9177 | 9512 | 8323 | 11250 | | |
| | Whole area | Total | 22260 | 32458 | 39387 | 35932 | 30450 | 21771 | 19742 | 18773 | 22492 | 17566 | 24865 | | |
| Anglian | Coastal | Drift nets | 723 | 1266 | 1497 | 2195 | 917 | 2021 | 1772 | 862 | 708 | 651 | 509 | | |
| | | Other nets (var.) | 205 | 163 | 186 | 212 | 372 | 455 | 281 | 252 | 205 | 201 | 205 | | |
| | Whole area | Total | 928 | 1429 | 1683 | 2407 | 1289 | 2476 | 2053 | 1114 | 913 | 852 | 714 | | |
| Southern | Hants area | Seine nets | 6 | 16 | 1 | 24 | 24 | 14 | 7 | 2 | 0 | 2 | 0 | | |
| | | Itchen | 0 | 0 | 0 | 0 | 0 | 0 | 0 | 0 | 0 | 0 | 0 | | |
| | Whole area | Total | 6 | 16 | 1 | 24 | 24 | 14 | 7 | 2 | 0 | 2 | 0 | | |
| South West | Avon + Stour | Seine nets | 218 | 525 | 781 | 450 | 1169 | 449 | 646 | 177 | 242 | 337 | 268 | | |
| | | Poole Harbour | 17 | 0 | 0 | 7 | 5 | 17 | 7 | 15 | 13 | 8 | 8 | | |
| | Parrett | Dip nets | 0 | 0 | 0 | 0 | 0 | 0 | 0 | 0 | 0 | 0 | 0 | | |
| | | Putcher ranks | 0 | 0 | 0 | 0 | 0 | 0 | 0 | 0 | 0 | 0 | 0 | | |
| | | River total | 0 | 0 | 0 | 0 | 0 | 0 | 0 | 0 | 0 | 0 | 0 | | |
| | Exe | Seine nets | 14 | 31 | 5 | 5 | 16 | 8 | 5 | 6 | 9 | 10 | 20 | | |
| | | Teign | 415 | 253 | 81 | 146 | 244 | 321 | 315 | 207 | 218 | 117 | 191 | | |
| | Dart | Seine nets | 552 | 510 | 289 | 605 | 727 | 564 | 451 | 538 | 75 | 67 | 107 | | |
| | Avon | Fixed Engine | 0 | 0 | 0 | 0 | 0 | 0 | 0 | 0 | 0 | 0 | 0 | | |
| | Camel | Drift nets | 7 | 3 | 16 | 40 | 6 | 21 | 1 | 0 | 0 | 0 | 0 | | |
| | Tavy | Seine nets | 0 | 31 | 21 | 14 | 20 | 32 | 0 | 0 | 0 | 0 | 0 | | |
| | Tamar | Seine nets | 36 | 92 | 45 | 66 | 55 | 44 | 0 | 0 | 0 | 0 | 0 | | |
| | Tavy/Tamar (a) | Seine net | 0 | 0 | 0 | 0 | 0 | 0 | 0 | 0 | 0 | 0 | 0 | | |
| | Lynher | Seine nets | 0 | 8 | 0 | 5 | 4 | 1 | 0 | 0 | 0 | 0 | 0 | | |
| | Fowey | Seine nets | 8 | 18 | 6 | 14 | 3 | 1 | 1 | 0 | 0 | 0 | 0 | | |
| | Taw/Torridge | Seine nets | 343 | 763 | 450 | 676 | 212 | 340 | 151 | 128 | 65 | 43 | 100 | | |
| | Lyn | Fixed Engine | 9 | 0 | 0 | 0 | 0 | 0 | 0 | 0 | 0 | 0 | 0 | | |
| | Whole area | Total | 1619 | 2234 | 1694 | 2028 | 2461 | 1798 | 1577 | 1071 | 622 | 582 | 694 | | |
| | Midlands | Severn | Seine nets | 0 | 0 | 0 | 0 | 0 | 0 | 0 | 0 | 0 | 0 | 0 | |
| | | | Lave nets | 0 | 0 | 0 | 0 | 0 | 0 | 0 | 0 | 0 | 0 | 0 | |
| Fixed Engines | | | 0 | 0 | 0 | 0 | 0 | 0 | 0 | 0 | 0 | 0 | 0 | | |
| Whole area | | Total | 0 | 0 | 0 | 0 | 0 | 0 | 0 | 0 | 0 | 0 | 0 | | |
| Environment Agency Wales | Wye | Lave nets | 0 | 0 | 0 | 0 | 0 | 0 | 0 | 0 | 0 | 0 | 0 | | |
| | | Usk | Drift nets | 9 | 13 | 0 | 0 | 0 | 0 | 0 | 0 | 0 | 0 | 0 | |
| | | | Putcher rank | 4 | 7 | 0 | 0 | 0 | 0 | 0 | 0 | 0 | 0 | 0 | |
| | | | River total | 13 | 20 | 0 | 0 | 0 | 0 | 0 | 0 | 0 | 0 | 0 | |
| | Tywi | Seine nets | 203 | 683 | 543 | 613 | 604 | 504 | 567 | 589 | 247 | 400 | 306 | | |
| | | Coracle nets | 246 | 400 | 619 | 738 | 555 | 766 | 205 | 324 | 197 | 351 | 367 | | |
| | | River total | 449 | 1083 | 1162 | 1351 | 1159 | 1270 | 772 | 913 | 444 | 751 | 673 | | |
| | Taf | Wade net | 2 | 1 | 0 | 0 | 0 | 2 | 0 | 2 | 0 | 0 | 1 | | |
| | | Coracle net | 50 | 135 | 64 | 6 | 39 | 12 | 17 | 17 | 28 | 0 | 0 | | |
| | | River total | 52 | 136 | 64 | 6 | 39 | 14 | 17 | 19 | 28 | 0 | 1 | | |
| | S.W.Coastal | Wade nets | 0 | 0 | 0 | 0 | 0 | 0 | 0 | 0 | 0 | 0 | 0 | | |
| | | Seine nets | 0 | 0 | 0 | 0 | 0 | 0 | 0 | 0 | 0 | 0 | 0 | | |
| | | River total | 0 | 0 | 0 | 0 | 0 | 0 | 0 | 0 | 0 | 0 | 0 | | |
| | E+W.Cleddau | Compass nets | 3 | 33 | 27 | 36 | 10 | 11 | 4 | 10 | 2 | 0 | 5 | | |
| | | Nevern | 49 | 84 | 20 | 0 | 0 | 0 | 0 | 0 | 0 | 0 | 0 | | |
| | Teifi | Seine nets | 155 | 3 | 115 | 170 | 7 | 15 | 13 | 79 | 13 | 38 | 80 | | |
| | | Coracle nets | 237 | 306 | 325 | 502 | 378 | 500 | 396 | 263 | 112 | 90 | 194 | | |
| | | River total | 392 | 309 | 440 | 672 | 385 | 515 | 409 | 342 | 125 | 128 | 274 | | |
| | Dyfi | Seine nets | 70 | 140 | 148 | 151 | 210 | 51 | 16 | 90 | 67 | 33 | 29 | | |
| | | Dysynni | 50 | 90 | 22 | 88 | 14 | 45 | 42 | 11 | 4 | 0 | 21 | | |
| | Mawddach | Seine nets | 0 | 0 | 0 | 1 | 0 | 0 | 0 | 0 | 1 | 0 | 4 | | |
| | | Glaslyn | 40 | 20 | 9 | 0 | 20 | 0 | 0 | 0 | 0 | 0 | 0 | | |
| | Dwyfawr | Seine nets | 0 | 0 | 0 | 0 | 0 | 0 | 0 | 0 | 0 | 0 | 0 | | |
| | | N. Caernarfon | 0 | 0 | 0 | 0 | 0 | 0 | 0 | 0 | 0 | 0 | 0 | | |
| | Seiont/Gwyrfa | Seine nets | 0 | 0 | 0 | 0 | 0 | 0 | 0 | 0 | 0 | 0 | 0 | | |
| | | Ogwen | 30 | 30 | 17 | 0 | 0 | 0 | 0 | 0 | 0 | 0 | 0 | | |
| | Conwy | Basket trap | 0 | 0 | 0 | 0 | 0 | 0 | 0 | 0 | 0 | 0 | 0 | | |
| | | Seine nets | 10 | 4 | 6 | 3 | 0 | 8 | 10 | 11 | 3 | 6 | 0 | | |
| | | River total | 10 | 4 | 6 | 3 | 0 | 8 | 10 | 11 | 3 | 6 | 0 | | |
| | Clwyd | Sling nets | 0 | 0 | 0 | 0 | 0 | 0 | 0 | 0 | 0 | 0 | 0 | | |
| | | Trammel nets | 15 | 10 | 1 | 5 | 95 | 15 | 15 | 13 | 21 | 16 | 0 | | |
| | | Seine nets | 19 | 19 | 26 | 21 | 11 | 35 | 52 | 33 | 0 | 2 | 15 | | |
| | Dee | River total | 34 | 29 | 27 | 26 | 106 | 50 | 67 | 46 | 21 | 18 | 15 | | |
| | | Whole area | Total | 1192 | 1978 | 1942 | 2334 | 1943 | 1964 | 1337 | 1442 | 695 | 936 | 1022 | |
| | North West | Ribble | Drift nets | 16 | 18 | 21 | 37 | 18 | 11 | 32 | 8 | 10 | 5 | 1 | |
| | | | Lune | Haaf nets | 350 | 609 | 233 | 312 | 238 | 325 | 491 | 274 | 244 | 125 | 248 |
| | | | | Drift nets | 97 | 208 | 93 | 122 | 35 | 47 | 79 | 86 | 48 | 20 | 25 |
| | | | | Seine net | 6 | 7 | 0 | 54 | 60 | 22 | 35 | 18 | 4 | 6 | 27 |
| | | River total | 453 | 824 | 326 | 488 | 333 | 405 | 637 | 386 | 306 | 156 | 300 | | |
| | | Kent | Lave nets | 1 | 5 | 0 | 24 | 0 | 3 | 0 | 7 | 5 | 4 | 0 | |
| Leven | | | 7 | 11 | 15 | 3 | 1 | 1 | 1 | 0 | 0 | 0 | 1 | | |
| Duddon | | Seine net | * | * | * | * | * | * | * | * | * | * | 0 | | |
| S&W Cumbria area | | Drift nets + var. nets | 0 | 0 | 21 | 31 | 9 | 16 | 0 | 0 | 0 | 0 | 0 | | |
| Eden + Esk area | | Haaf nets + var. nets | 677 | 1095 | 932 | 1618 | 490 | 800 | 701 | 634 | 278 | 253 | 377 | | |
| | | Whole area | Total | 1154 | 1953 | 1315 | 2201 | 851 | 1225 | 1339 | 1027 | 589 | 413 | 679 | |
| England and Wales | | | 27159 | 40068 | 46022 | 44926 | 37018 | 29248 | 26055 | 23429 | 25311 | 20351 | 27974 | | |

(a) Catches recorded under Tavy and Tamar as appropriate

S = South N = North

Table 15 SUMMARY OF REPORTED SALMON ROD CATCH, 1998-2008

| Environment Agency Region | River | 1998 | 1999 | 2000 | 2001 | 2002 | 2003 | 2004 | 2005 | 2006 | 2007 | 2008 |
|---------------------------|---------------|--------------|--------------|--------------|--------------|--------------|--------------|--------------|--------------|--------------|--------------|--------------|
| North East | Aln | 14 | 0 | 5 | 1 | 4 | 55 | 15 | 19 | 9 | 26 | 6 |
| | Coquet | 596 | 376 | 616 | 649 | 689 | 566 | 1177 | 1108 | 780 | 641 | 842 |
| | Tyne | 1808 | 1898 | 2297 | 2513 | 2585 | 2163 | 4122 | 3591 | 3795 | 3091 | 3389 |
| | Wear | 368 | 266 | 533 | 436 | 535 | 586 | 1055 | 971 | 823 | 788 | 959 |
| | Tees | 118 | 109 | 105 | 81 | 93 | 86 | 208 | 107 | 135 | 159 | 267 |
| | Other | 1 | 0 | 0 | 20 | 2 | 0 | 16 | 10 | 13 | 4 | 2 |
| | Esk (Yorks.) | 35 | 19 | 44 | 33 | 57 | 43 | 189 | 111 | 197 | 145 | 159 |
| | Ouse (Yorks.) | 1 | 2 | 0 | 0 | 2 | 8 | 6 | 16 | 22 | 18 | 10 |
| Total | 2941 | 2670 | 3600 | 3733 | 3967 | 3507 | 6788 | 5933 | 5774 | 4872 | 5634 | |
| Thames | Thames | 0 | 1 | 0 | 0 | 0 | 0 | 0 | 0 | 0 | 0 | 0 |
| Southern | Test (b) | 204 | 159 | 147 | 215 | 342 | 167 | 459 | 351 | 210 | 256 | 419 |
| | Itchen (b) | 161 | 92 | 168 | 190 | 189 | 58 | 150 | 87 | 121 | 210 | 289 |
| | Others | 1 | 2 | 1 | 0 | 0 | 0 | 0 | 0 | 0 | 0 | 3 |
| Total | 366 | 253 | 316 | 405 | 531 | 225 | 609 | 438 | 331 | 466 | 711 | |
| South West | Avon (Hants.) | 52 | 40 | 14 | 43 | 104 | 109 | 78 | 132 | 134 | 116 | 67 |
| | Piddle | 3 | 8 | 1 | 1 | 13 | 5 | 8 | 3 | 1 | 1 | 0 |
| | Frome | 103 | 119 | 82 | 95 | 115 | 57 | 60 | 58 | 57 | 69 | 46 |
| | Exe | 676 | 477 | 649 | 187 | 210 | 146 | 594 | 269 | 187 | 340 | 540 |
| | Teign | 162 | 74 | 97 | 43 | 52 | 47 | 194 | 71 | 63 | 87 | 214 |
| | Dart | 136 | 80 | 100 | 50 | 34 | 37 | 156 | 66 | 49 | 75 | 124 |
| | Avon (Devon) | 32 | 17 | 33 | 11 | 53 | 35 | 76 | 31 | 59 | 54 | 61 |
| | Plym | 23 | 11 | 19 | 13 | 19 | 7 | 3 | 6 | 26 | 14 | 23 |
| | Tavy | 145 | 62 | 66 | 55 | 16 | 14 | 69 | 85 | 76 | 68 | 81 |
| | Tamar | 404 | 241 | 250 | 114 | 143 | 114 | 316 | 131 | 197 | 169 | 358 |
| | Lynher | 87 | 39 | 67 | 38 | 30 | 28 | 79 | 74 | 56 | 90 | 67 |
| | Fowey | 128 | 94 | 163 | 117 | 218 | 113 | 164 | 242 | 254 | 114 | 190 |
| | Camel | 241 | 167 | 234 | 226 | 266 | 307 | 389 | 334 | 355 | 369 | 358 |
| | Torridge | 91 | 39 | 71 | 13 | 28 | 19 | 89 | 46 | 44 | 56 | 119 |
| | Taw | 426 | 290 | 403 | 126 | 153 | 112 | 317 | 103 | 151 | 345 | 287 |
| | Lyn | 181 | 109 | 216 | 246 | 206 | 97 | 168 | 56 | 67 | 88 | 117 |
| | Others | 29 | 14 | 22 | 18 | 77 | 19 | 39 | 18 | 26 | 16 | 34 |
| Total | 2919 | 1881 | 2487 | 1396 | 1737 | 1266 | 2799 | 1725 | 1802 | 2071 | 2686 | |
| Midlands | Severn | 185 | 184 | 327 | 273 | 195 | 333 | 319 | 430 | 356 | 280 | 294 |
| Environment Agency, Wales | Wye (b) | 793 | 567 | 592 | 733 | 357 | 460 | 788 | 683 | 519 | 675 | 1099 |
| | Usk | 680 | 539 | 872 | 857 | 616 | 305 | 1115 | 772 | 748 | 1158 | 1157 |
| | Taff | 19 | 44 | 66 | 18 | 4 | 0 | 11 | 15 | 21 | 14 | 21 |
| | Ogmore | 92 | 82 | 81 | 62 | 51 | 27 | 107 | 33 | 39 | 54 | 76 |
| | Afan | 24 | 8 | 7 | 8 | 7 | 5 | 10 | 6 | 5 | 3 | 9 |
| | Neath | 50 | 45 | 64 | 70 | 90 | 35 | 73 | 37 | 85 | 53 | 99 |
| | Tawe | 96 | 70 | 47 | 113 | 148 | 61 | 155 | 164 | 184 | 183 | 195 |
| | Loughor | 7 | 11 | 16 | 13 | 13 | 8 | 38 | 29 | 10 | 39 | 51 |
| | Tywi | 408 | 356 | 420 | 227 | 390 | 432 | 795 | 507 | 642 | 737 | 720 |
| | Taf | 58 | 69 | 83 | 99 | 41 | 32 | 178 | 103 | 105 | 64 | 92 |
| | E+W.Cleddau | 60 | 34 | 58 | 46 | 34 | 36 | 51 | 40 | 32 | 72 | 102 |
| | Nevern | 17 | 18 | 27 | 30 | 19 | 34 | 45 | 27 | 65 | 46 | 38 |
| | Teifi | 531 | 554 | 584 | 616 | 507 | 333 | 1062 | 472 | 552 | 518 | 571 |
| | Aeron | 1 | 6 | 6 | 7 | 12 | 0 | 18 | 0 | 2 | 1 | 3 |
| | Ystwyth | 32 | 11 | 18 | 11 | 8 | 1 | 9 | 3 | 5 | 10 | 3 |
| | Rheidol | 34 | 27 | 25 | 30 | 15 | 12 | 50 | 38 | 27 | 31 | 62 |
| | Dyfi | 148 | 106 | 134 | 145 | 49 | 46 | 160 | 114 | 207 | 159 | 197 |
| | Dysynni | 11 | 2 | 7 | 2 | 5 | 1 | 5 | 2 | 2 | 2 | 3 |
| | Mawddach | 140 | 146 | 127 | 130 | 121 | 101 | 206 | 126 | 118 | 111 | 94 |
| | Arto | 6 | 3 | 1 | 4 | 4 | 0 | 3 | 4 | 7 | 0 | 5 |
| | Dwryyd | 20 | 10 | 6 | 17 | 33 | 16 | 42 | 17 | 22 | 10 | 21 |
| | Glaslyn | 21 | 11 | 9 | 11 | 19 | 4 | 30 | 9 | 17 | 29 | 43 |
| | Dwyfawr | 11 | 12 | 18 | 11 | 8 | 7 | 31 | 11 | 14 | 9 | 18 |
| | Llyfni | 28 | 9 | 12 | 11 | 22 | 14 | 9 | 2 | 0 | 4 | 1 |
| | Gwyrfa | 0 | 0 | 1 | 0 | 0 | 0 | 4 | 1 | 0 | 1 | 1 |
| | Seiont | 32 | 18 | 39 | 39 | 9 | 12 | 99 | 57 | 50 | 35 | 32 |
| | Ogwen | 110 | 54 | 101 | 122 | 68 | 43 | 114 | 125 | 52 | 101 | 121 |
| | Conwy (a) | 134 | 89 | 199 | 220 | 110 | 147 | 264 | 162 | 157 | 192 | 190 |
| | Clwyd | 110 | 71 | 60 | 74 | 49 | 35 | 77 | 18 | 31 | 135 | 176 |
| Dee | 627 | 390 | 359 | 616 | 493 | 421 | 1080 | 812 | 621 | 683 | 885 | |
| Others | 25 | 7 | 10 | 9 | 10 | 4 | 23 | 19 | 16 | 7 | 37 | |
| Total | 4325 | 3369 | 4049 | 4351 | 3312 | 2632 | 6652 | 4408 | 4355 | 5136 | 6122 | |
| North West | Ribble | 778 | 633 | 827 | 349 | 692 | 556 | 1442 | 1094 | 1054 | 1062 | 1372 |
| | Wyre | 35 | 5 | 5 | 11 | 15 | 3 | 26 | 4 | 5 | 8 | 25 |
| | Lune | 1451 | 1032 | 1440 | 566 | 1127 | 823 | 1893 | 1481 | 1163 | 1152 | 1374 |
| | Kent | 786 | 234 | 576 | 260 | 352 | 233 | 582 | 567 | 493 | 411 | 539 |
| | Leven | 41 | 6 | 17 | 6 | 7 | 12 | 61 | 65 | 51 | 30 | 38 |
| | Duddon | 35 | 15 | 12 | 24 | 17 | 8 | 63 | 56 | 69 | 65 | 125 |
| | Esk (Cumbria) | 72 | 77 | 114 | 50 | 80 | 20 | 74 | 107 | 104 | 227 | 90 |
| | Irt | 144 | 42 | 105 | 30 | 76 | 42 | 133 | 131 | 148 | 119 | 119 |
| | Calder | 96 | 12 | 67 | 14 | 61 | 22 | 51 | 31 | 47 | 16 | 53 |
| | Ehen | 358 | 78 | 443 | 164 | 395 | 115 | 344 | 275 | 274 | 330 | 365 |
| | Derwent | 737 | 656 | 1328 | 1063 | 888 | 466 | 1770 | 1386 | 887 | 1458 | 1286 |
| | Ellen | 31 | 8 | 22 | 10 | 16 | 3 | 29 | 8 | 2 | 6 | 30 |
| | Eden | 1110 | 885 | 1093 | 1122 | 963 | 808 | 2622 | 2223 | 1634 | 1407 | 1571 |
| | Esk (Border) | 628 | 431 | 729 | 521 | 812 | 431 | 897 | 978 | 808 | 841 | 1065 |
| | Others | 57 | 19 | 36 | 19 | 31 | 5 | 35 | 40 | 32 | 19 | 13 |
| Total | 6359 | 4133 | 6814 | 4209 | 5532 | 3547 | 10022 | 8446 | 6771 | 7151 | 8065 | |
| England and Wales | | 17109 | 12505 | 17596 | 14383 | 15282 | 11519 | 27336 | 21418 | 19509 | 19984 | 23512 |

Figures include all fish caught, not just retained fish
(a) 2004 figure amended from earlier reports
(b) Owners catch returns used

Table 16 SUMMARY OF REPORTED SEA TROUT ROD CATCH, 1998-2008

| Environment Agency Region | River | 1998 | 1999 | 2000 | 2001 | 2002 | 2003 | 2004 | 2005 | 2006 | 2007 | 2008 |
|---------------------------|----------------|-------|-------|-------|-------|-------|-------|-------|-------|-------|-------|-------|
| North East | Aln | 92 | 92 | 60 | 69 | 108 | 182 | 65 | 74 | 87 | 139 | 83 |
| | Coquet | 909 | 538 | 636 | 418 | 457 | 148 | 557 | 330 | 325 | 254 | 531 |
| | Tyne | 2525 | 2062 | 1498 | 2131 | 2371 | 1585 | 2095 | 1724 | 1636 | 1660 | 2036 |
| | Wear | 1064 | 1255 | 1331 | 1165 | 2374 | 1448 | 2143 | 1497 | 1298 | 1356 | 2080 |
| | Tees | 46 | 91 | 88 | 39 | 62 | 61 | 143 | 108 | 51 | 50 | 68 |
| | Esk (Yorks.) | 522 | 507 | 564 | 276 | 519 | 479 | 489 | 376 | 552 | 672 | 493 |
| | Others | 35 | 28 | 51 | 72 | 82 | 30 | 43 | 29 | 101 | 41 | 32 |
| | Total | 5193 | 4573 | 4228 | 4170 | 5973 | 3933 | 5535 | 4138 | 4050 | 4172 | 5323 |
| Thames | Thames | 0 | 0 | 0 | 0 | 1 | 1 | 2 | 0 | 1 | 8 | 0 |
| Southern | Test | 86 | 113 | 147 | 280 | 260 | 357 | 216 | 114 | 115 | 89 | 74 |
| | Itchen | 709 | 269 | 481 | 1067 | 866 | 676 | 411 | 147 | 324 | 213 | 242 |
| | Ouse (Sussex) | 38 | 133 | 78 | 146 | 161 | 101 | 76 | 27 | 41 | 51 | 44 |
| | Others | 200 | 139 | 116 | 215 | 228 | 209 | 187 | 157 | 109 | 99 | 135 |
| | Total | 1033 | 654 | 822 | 1708 | 1515 | 1343 | 890 | 445 | 589 | 452 | 495 |
| South West | Avon (Hants.) | 812 | 557 | 645 | 2354 | 766 | 1412 | 456 | 927 | 237 | 152 | 187 |
| | Stour (Hants.) | 50 | 2 | 20 | 30 | 13 | 77 | 14 | 28 | 30 | 9 | 6 |
| | Piddle | 9 | 14 | 0 | 5 | 34 | 57 | 27 | 36 | 24 | 68 | 37 |
| | Frome | 258 | 211 | 111 | 206 | 207 | 241 | 211 | 153 | 101 | 118 | 50 |
| | Axe | 418 | 515 | 261 | 535 | 420 | 287 | 204 | 254 | 288 | 295 | 233 |
| | Otter | 87 | 76 | 117 | 74 | 165 | 118 | 53 | 63 | 53 | 49 | 87 |
| | Exe | 51 | 73 | 29 | 16 | 45 | 59 | 41 | 32 | 19 | 32 | 42 |
| | Teign | 1017 | 1118 | 589 | 591 | 798 | 599 | 616 | 581 | 440 | 530 | 589 |
| | Dart | 1137 | 867 | 651 | 782 | 712 | 718 | 574 | 599 | 453 | 334 | 242 |
| | Avon (Devon) | 163 | 417 | 237 | 229 | 395 | 661 | 435 | 168 | 417 | 93 | 290 |
| | Erme | 29 | 74 | 37 | 53 | 50 | 48 | 26 | 68 | 53 | 64 | 14 |
| | Yealm | 77 | 105 | 118 | 67 | 82 | 152 | 71 | 52 | 66 | 28 | 37 |
| | Plym | 202 | 205 | 131 | 156 | 112 | 77 | 60 | 103 | 82 | 74 | 75 |
| | Tavy | 246 | 365 | 327 | 462 | 260 | 282 | 271 | 426 | 158 | 122 | 285 |
| | Tamar | 475 | 772 | 423 | 289 | 524 | 515 | 537 | 315 | 215 | 252 | 298 |
| | Lynher | 310 | 326 | 281 | 166 | 138 | 277 | 142 | 207 | 150 | 139 | 191 |
| | Looe | 46 | 107 | 99 | 188 | 97 | 146 | 123 | 162 | 88 | 68 | 14 |
| | Fowey | 1013 | 1274 | 951 | 1180 | 1037 | 1056 | 844 | 1184 | 772 | 752 | 519 |
| | Camel | 658 | 1099 | 544 | 877 | 1031 | 1498 | 1112 | 1022 | 563 | 441 | 333 |
| | Torr ridge | 335 | 448 | 239 | 426 | 335 | 321 | 249 | 181 | 82 | 106 | 219 |
| | Taw | 869 | 952 | 506 | 175 | 822 | 596 | 389 | 562 | 208 | 451 | 570 |
| | Lyn | 71 | 57 | 60 | 56 | 60 | 56 | 43 | 21 | 26 | 29 | 30 |
| | Others | 85 | 34 | 96 | 102 | 150 | 91 | 72 | 147 | 65 | 53 | 5 |
| Total | 8418 | 9668 | 6472 | 9019 | 8253 | 9344 | 6570 | 7291 | 4590 | 4259 | 4353 | |
| Midlands | Severn | 71 | 1 | 12 | 8 | 19 | 12 | 14 | 105 | 14 | 32 | 25 |
| Environment Agency, Wales | Wye | 43 | 16 | 19 | 45 | 27 | 24 | 36 | 84 | 42 | 39 | 48 |
| | Usk | 410 | 611 | 520 | 125 | 290 | 320 | 238 | 244 | 184 | 129 | 191 |
| | Taff | 236 | 229 | 105 | 174 | 90 | 71 | 62 | 55 | 12 | 45 | 115 |
| | Rhymney | 11 | 7 | 10 | 14 | 55 | 28 | 17 | 9 | 11 | 23 | 28 |
| | Ogmore | 911 | 646 | 677 | 547 | 878 | 572 | 584 | 784 | 193 | 386 | 418 |
| | Afan | 286 | 195 | 188 | 166 | 103 | 162 | 168 | 153 | 63 | 158 | 161 |
| | Neath | 332 | 340 | 535 | 673 | 782 | 400 | 532 | 393 | 298 | 487 | 317 |
| | Tawe | 294 | 404 | 136 | 373 | 424 | 272 | 173 | 372 | 153 | 243 | 144 |
| | Loughor | 392 | 509 | 322 | 258 | 550 | 577 | 369 | 538 | 184 | 277 | 361 |
| | Gwendraeth | 114 | 111 | 58 | 99 | 154 | 101 | 59 | 56 | 61 | 71 | 62 |
| | Tywi | 4593 | 6242 | 4134 | 2056 | 4554 | 4175 | 2587 | 4698 | 2091 | 3271 | 2570 |
| | Taf | 481 | 540 | 273 | 224 | 562 | 475 | 204 | 528 | 205 | 280 | 447 |
| | E+W.Cleddau | 1123 | 1297 | 755 | 651 | 869 | 738 | 439 | 937 | 227 | 511 | 681 |
| | NeVERN | 756 | 893 | 584 | 1078 | 846 | 1125 | 606 | 722 | 539 | 415 | 674 |
| | Teifi | 3605 | 3809 | 3235 | 3694 | 4841 | 3997 | 3126 | 4342 | 1990 | 1774 | 1746 |
| | Aeron | 481 | 568 | 280 | 364 | 777 | 422 | 396 | 205 | 35 | 306 | 151 |
| | Ystwyth | 593 | 259 | 211 | 223 | 256 | 83 | 276 | 107 | 19 | 376 | 132 |
| | Rheidol | 431 | 927 | 473 | 693 | 703 | 961 | 551 | 741 | 744 | 587 | 231 |
| | Dyfi | 1787 | 2070 | 2032 | 2185 | 1793 | 1474 | 1362 | 1439 | 1054 | 1459 | 1215 |
| | Dysynni | 729 | 464 | 435 | 406 | 343 | 688 | 471 | 502 | 284 | 410 | 315 |
| | Mawddach | 934 | 1448 | 1020 | 1974 | 1529 | 1196 | 1127 | 1024 | 387 | 594 | 325 |
| | Arthro | 37 | 24 | 40 | 94 | 63 | 44 | 30 | 29 | 23 | 17 | 24 |
| | Dwyrhyd | 153 | 181 | 124 | 367 | 381 | 147 | 70 | 50 | 57 | 48 | 78 |
| | Glaslyn | 393 | 436 | 383 | 240 | 1096 | 534 | 567 | 592 | 489 | 682 | 520 |
| | Dwyfawr | 1337 | 765 | 1027 | 1261 | 1111 | 1246 | 347 | 691 | 235 | 455 | 145 |
| | Llyfni | 1035 | 182 | 384 | 542 | 290 | 518 | 187 | 221 | 108 | 257 | 63 |
| | Gwyrfa | 23 | 1 | 2 | 3 | 22 | 0 | 4 | 4 | 0 | 9 | 0 |
| | Seiont | 50 | 54 | 26 | 89 | 85 | 82 | 112 | 29 | 19 | 21 | 28 |
| | Ogwen | 182 | 88 | 104 | 112 | 193 | 148 | 130 | 177 | 86 | 170 | 65 |
| | Conwy (a) | 514 | 351 | 391 | 583 | 630 | 572 | 464 | 489 | 282 | 585 | 434 |
| | Clwyd | 1730 | 765 | 708 | 1319 | 868 | 982 | 1085 | 782 | 490 | 728 | 949 |
| | Dee | 265 | 159 | 177 | 283 | 414 | 249 | 265 | 303 | 253 | 276 | 192 |
| | Others | 140 | 25 | 71 | 76 | 110 | 120 | 192 | 177 | 67 | 201 | 140 |
| Total | 24401 | 24616 | 19439 | 20991 | 25689 | 22503 | 16836 | 21477 | 10885 | 15290 | 12970 | |
| North West | Ribble | 1635 | 1423 | 1511 | 499 | 1553 | 1296 | 1294 | 1313 | 683 | 1174 | 826 |
| | Wyre | 71 | 37 | 33 | 32 | 62 | 26 | 66 | 5 | 24 | 30 | 16 |
| | Lune | 2730 | 2091 | 2833 | 1426 | 2549 | 2268 | 1760 | 1380 | 962 | 1120 | 1068 |
| | Kent | 576 | 284 | 527 | 214 | 403 | 426 | 431 | 570 | 294 | 456 | 335 |
| | Leven | 200 | 76 | 104 | 54 | 116 | 70 | 69 | 30 | 32 | 132 | 34 |
| | Duddon | 115 | 29 | 60 | 128 | 38 | 54 | 143 | 181 | 132 | 159 | 183 |
| | Esk (Cumbrian) | 254 | 236 | 203 | 93 | 189 | 88 | 112 | 140 | 93 | 199 | 29 |
| | Irt | 244 | 184 | 195 | 20 | 209 | 95 | 110 | 125 | 29 | 142 | 84 |
| | Calder | 14 | 6 | 13 | 2 | 16 | 10 | 9 | 10 | 2 | 4 | 7 |
| | Ehen | 631 | 184 | 854 | 49 | 1131 | 1113 | 466 | 688 | 516 | 193 | 353 |
| | Derwent | 561 | 1049 | 978 | 405 | 321 | 250 | 384 | 294 | 214 | 212 | 159 |
| | Ellen | 14 | 26 | 78 | 56 | 132 | 41 | 129 | 69 | 42 | 155 | 35 |
| | Eden | 338 | 345 | 703 | 330 | 370 | 881 | 427 | 705 | 238 | 241 | 186 |
| | Esk (Border) | 1671 | 1239 | 2174 | 1122 | 1107 | 1260 | 749 | 1138 | 581 | 933 | 1221 |
| | Others | 130 | 56 | 79 | 33 | 49 | 15 | 27 | 43 | 21 | 32 | 5 |
| | Total | 9184 | 7265 | 10345 | 4463 | 8245 | 7893 | 6176 | 6691 | 3863 | 5182 | 4541 |
| | Unknown region | 9 | 9 | 4 | 15 | 101 | 77 | 77 | 172 | 277 | 3 | 0 |
| England and Wales | | 48309 | 46786 | 41322 | 40374 | 49796 | 45101 | 36100 | 40319 | 24269 | 29398 | 27707 |

Figures include all fish caught, not just retained fish
(a) 2004 figure amended from earlier reports

Table 17 REPORTED NET EFFORT DATA FOR SALMON AND SEA TROUT - 2008

| Environment Agency Region | River/ Fishery | Fishing Method | No. Lic. | Days available (a) | Allowable effort (b) net days (NE)/tides (other) | Utilised effort net days (NE) net tides (other) | % utilised | Average day (NE)/tide (other) per licence | Catch Salmon | Salmon catch per lic.day (NE)/ tide (other) | Catch Sea trout | Sea trout catch per lic. day (NE)/ tide (other) | |
|---------------------------|----------------|-------------------|------------|--------------------|--|---|------------|---|--------------|---|-----------------|---|------|
| North East Northumbria | Coastal (N) | Drift | 14 (c) | 115 | 1610 | 565 | 35 | 40 | 3,111 | 5.51 | 2,545 | 4.50 | |
| | | T nets | 26 (c) | 66 | 1716 | 610 | 36 | 23 | 2154 | 3.53 | 9,800 | 16.07 | |
| | Coastal (S) | Drift nets | 0 | - | 0 | 0 | 0 | 0 | 0 | 0 | 0.00 | 0 | 0.00 |
| | | T nets | 1 | 115 | 115 | 25 | 22 | 25 | 84 | 3.36 | 241 | 9.64 | |
| | Coastal | Drift nets | 2 | 66 | 132 | 109 | 83 | 55 | 538 | 4.94 | 996 | 9.14 | |
| | | T or J nets | 29 | 115 | 3335 | 884 | 27 | 30 | 354 | 0.40 | 11,250 | 12.73 | |
| | Coastal | Drift nets | 25 | 160 | 5600 | 387 | 7 | 15 | 9 | 0.02 | 551 | 1.42 | |
| | | Other nets (var.) | 8 | 160 | 1792 | 110 | 6 | 14 | 0 | 0.00 | 211 | 1.92 | |
| | South West | Avon + Stour | Seine nets | 4 | 52 | 291 | 167 | 57 | 42 | 65 | 0.39 | 268 | 1.60 |
| | | | Seine net | 1 | 52 | 73 | 38 | 52 | 38 | 6 | 0.16 | 8 | 0.21 |
| Poole Harbour | | Seine nets | 3 | 64 | 269 | 114 | 42 | 38 | 137 | 1.20 | 20 | 0.18 | |
| | | Seine net | 3 | 119 | 500 | 144 | 29 | 48 | 103 | 0.72 | 191 | 1.33 | |
| Teign | | Seine nets | 3 | 133 | 559 | 124 | 22 | 41 | 54 | 0.44 | 107 | 0.86 | |
| | | Seine net | 6 | 26 | 218 | 3 | 1 | 1 | 3 | 1.00 | 0 | 0.00 | |
| Camel | | Drift nets | - | - | - | - | - | - | - | - | - | - | - |
| | | Seine nets | - | - | - | - | - | - | - | - | - | - | - |
| Tavy | | Seine nets | - | - | - | - | - | - | - | - | - | - | - |
| | | Seine net | - | - | - | - | - | - | - | - | - | - | - |
| Tavy/Tamar | | Seine nets | - | - | - | - | - | - | - | - | - | - | - |
| | | Seine net | - | - | - | - | - | - | - | - | - | - | - |
| Lynher | | Seine nets | 2 | 66 | 185 | 0 | 0 | 0 | 0 | 0.00 | 0 | 0.00 | 0.00 |
| | Seine net | 2 | 66 | 185 | 0 | 0 | 0 | 0 | 0.00 | 0 | 0.00 | 0.00 | |
| Fowey | Seine nets | 3 | 129 | 542 | 96 | 18 | 32 | 17 | 0.18 | 100 | 1.04 | | |
| | Seine net | 3 | 129 | 542 | 96 | 18 | 32 | 17 | 0.18 | 100 | 1.04 | | |
| Midlands | Severn | Seine nets | 3 | 76 | 319 | 0 | 0 | 0 | 0 | 0.00 | 0 | 0.00 | |
| | | Lave nets | 24 (e) | 78 | 2621 | 533 | 20 | 22 | 100 | 0.19 | 0 | 0.00 | |
| Environment Agency Wales | Wye | Fixed Engines | 5 (f) | 78 | 780 | 580 | 74 | 116 | 771 | 1.33 | 0 | 0.00 | |
| | | Lave nets | 7 | 79 | 774 | 142 | 4 | 20 | 0 | 0.00 | 0 | 0.00 | |
| | Tywi | Seine nets | 3 | 129 | 542 | 250 | 46 | 83 | 16 | 0.06 | 1224 | 4.90 | |
| | | Seine net | 8 | 129 | 1445 | 235 | 16 | 29 | 29 | 1.56 | 367 | 1.56 | |
| | Taf | Seine net | 1 | 129 | 181 | 14 | 8 | 14 | 0 | 0.00 | 1 | 0.07 | |
| | | Seine net | 1 | 129 | 181 | 14 | 8 | 14 | 0 | 0.00 | 0 | 0.00 | |
| | E+W, Cleddau | Seine nets | 6 | 79 | 664 | 59 | 9 | 10 | 3 | 0.05 | 5 | 0.08 | |
| | | Seine net | 3 | 129 | 542 | 106 | 20 | 35 | 41 | 0.39 | 80 | 0.75 | |
| | Teifi | Seine nets | 11 | 129 | 1987 | 210 | 11 | 19 | 24 | 0.11 | 194 | 0.92 | |
| | | Seine net | 3 | 129 | 542 | 61 | 11 | 20 | 0 | 0.00 | 29 | 0.48 | |
| | Dyfi | Seine nets | 1 | 129 | 181 | 12 | 7 | 12 | 0 | 0.00 | 21 | 0.00 | |
| | | Seine net | 2 | 79 | 221 | 35 | 16 | 18 | 0 | 0.00 | 4 | 0.11 | |
| | Mawddach | Seine nets | 0 | 79 | 0 | 0 | 0 | 0 | 0 | 0.00 | 0 | 0.00 | |
| | | Seine net | 1 | 92 | 0 | 0 | 0 | 0 | 0 | 0.00 | 0 | 0.00 | |
| | Glaslyn | Basket trap | 3 | 79 | 332 | 39 | 12 | 13 | 0 | 0.00 | 0 | 0.00 | |
| | | Seine nets | 3 | 79 | 332 | 39 | 12 | 13 | 0 | 0.00 | 0 | 0.00 | |
| | Conwy | Seine nets | 0 | 52 | 0 | 0 | 0 | 0 | 0 | 0.00 | 0 | 0.00 | |
| | | Seine net | 3 | 79 | 332 | 39 | 12 | 13 | 0 | 0.00 | 0 | 0.00 | |
| | Dee | Seine nets | 5 | 52 | 364 | 128 | 35 | 26 | 43 | 0.34 | 15 | 0.12 | |
| Seine net | | 6 | 79 | 664 | 103 | 16 | 17 | 64 | 0.62 | 1 | 0.01 | | |
| North West (e) | Ribble | Seine nets | 11 | 79 | 1217 | 646 | 53 | 59 | 86 | 0.13 | 248 | 0.38 | |
| | | Seine net | 7 | 79 | 774 | 245 | 32 | 35 | 238 | 0.97 | 25 | 0.10 | |
| Lune | Seine net | 1 | 79 | 111 | 37 | 33 | 37 | 17 | 0.46 | 27 | 0.73 | | |
| | Lave nets | 6 | 79 | 664 | 32 | 5 | 5 | 0 | 0.00 | 0 | 0.00 | | |
| Leven | Lave nets | 3 | 53 | 223 | 36 | 16 | 12 | 3 | 0.08 | 1 | 0.03 | | |
| | Seine nets | - | - | - | - | - | - | - | - | - | - | - | |
| S&W Cumbria | Eden + Esk | Drift nets | 79 | 86 | 9512 | 1997 | 21 | 25 | 556 | 0.28 | 377 | 0.19 | |
| | | Seine nets | 3 | 79 | 332 | 15 | 5 | 5 | 19 | 1.27 | 0 | 0.00 | |

Key:
(a) Days available is the total of the open season minus weekly closure periods. Part days included as full days - voluntary closure or buy-outs not taken into account
(b) Allowable effort is number of licences X available days for NE fisheries. Allowable effort for other fisheries is number of licences X available days X 1.4 tides.
(c) Separate licences for drift and T nets were issued for the first time in the northern area in 1983.
(d) Catches included under Tavy and Tamar as appropriate.
(e) Figures for half- and full-season lave nets combined.
(f) Assume all effort utilised
nr = not recorded

Table 18 REPORTED ROD EFFORT DATA FOR SALMON AND SEA TROUT - 2008

| Environment Agency Region | River | Number of returns with effort data | Number of days fished | Number of days fished per return | (a) Number of salmon and grilse recorded | Catch per licence day | (a) Number of sea trout recorded | Catch per licence day | Days to catch a salmonid |
|---------------------------|----------------|------------------------------------|-----------------------|----------------------------------|--|-----------------------|----------------------------------|-----------------------|--------------------------|
| North East | Aln | 39 | 459 | 11.77 | 6 | 0.013 | 83 | 0.181 | 5.16 |
| | Coquet | 448 | 6243 | 13.94 | 842 | 0.135 | 531 | 0.085 | 4.55 |
| | Tyne | 2188 | 16988 | 7.76 | 3389 | 0.199 | 2036 | 0.120 | 3.13 |
| | Wear | 664 | 8706 | 13.11 | 959 | 0.110 | 2080 | 0.239 | 2.86 |
| | Tees | 205 | 1830 | 8.93 | 267 | 0.146 | 68 | 0.037 | 5.46 |
| | Esk (Yorks.) | 158 | 1196 | 7.57 | 159 | 0.133 | 493 | 0.412 | 1.83 |
| | Ouse (Yorks.) | 27 | 121 | 4.48 | 10 | 0.083 | 2 | 0.017 | 10.08 |
| Thames | Thames | 5 | 63 | 12.60 | 0 | 0.000 | 0 | 0.000 | - |
| Southern | Test | 113 | 522 | 4.62 | 159 | 0.305 | 74 | 0.142 | 2.24 |
| | Itchen | 129 | 582 | 4.51 | 176 | 0.302 | 242 | 0.416 | 1.39 |
| | Beaulieu | 18 | 57 | 3.17 | 2 | 0.035 | 36 | 0.632 | 1.50 |
| | Ouse (Sussex) | 45 | 530 | 11.78 | 0 | 0.000 | 44 | 0.083 | 12.05 |
| | Adur | 10 | 95 | 9.50 | 0 | 0.000 | 11 | 0.116 | 8.64 |
| | Lymington | 8 | 75 | 9.38 | 0 | 0.000 | 9 | 0.120 | 8.33 |
| | Great Stour | 9 | 36 | 4.00 | 1 | 0.028 | 31 | 0.861 | 1.13 |
| South West | Avon (Hants.) | 136 | 837 | 6.15 | 24 | 0.029 | 187 | 0.223 | 3.97 |
| | Stour (Hants.) | 4 | 10 | 2.50 | 0 | 0.000 | 6 | 0.600 | 1.67 |
| | Piddle | 17 | 120 | 7.06 | 0 | 0.000 | 37 | 0.308 | 3.24 |
| | Frome | 66 | 401 | 6.08 | 46 | 0.115 | 50 | 0.125 | 4.18 |
| | Axe | 100 | 578 | 5.78 | 23 | 0.040 | 233 | 0.403 | 2.26 |
| | Otter | 33 | 199 | 6.03 | 0 | 0.000 | 87 | 0.437 | 2.29 |
| | Exe | 312 | 2255 | 7.23 | 540 | 0.239 | 42 | 0.019 | 3.87 |
| | Teign | 135 | 1536 | 11.38 | 214 | 0.139 | 589 | 0.383 | 1.91 |
| | Dart | 148 | 1152 | 7.78 | 124 | 0.108 | 242 | 0.210 | 3.15 |
| | Avon (Devon) | 151 | 1132 | 7.50 | 61 | 0.054 | 290 | 0.256 | 3.23 |
| | Erme | 10 | 75 | 7.50 | 5 | 0.067 | 14 | 0.187 | 3.95 |
| | Yealm | 12 | 76 | 6.33 | 0 | 0.000 | 87 | 1.145 | 0.87 |
| | Plym | 36 | 345 | 9.58 | 23 | 0.067 | 75 | 0.217 | 3.52 |
| | Tavy | 83 | 983 | 11.84 | 81 | 0.082 | 285 | 0.290 | 2.69 |
| | Tamar | 329 | 1507 | 4.58 | 358 | 0.238 | 298 | 0.198 | 2.30 |
| | Lynher | 50 | 662 | 13.24 | 67 | 0.101 | 191 | 0.289 | 2.57 |
| | Looe | 3 | 28 | 9.33 | 1 | 0.036 | 14 | 0.500 | 1.87 |
| | Fowey | 222 | 2036 | 9.17 | 190 | 0.093 | 519 | 0.255 | 2.87 |
| | Camel | 258 | 3020 | 11.71 | 358 | 0.119 | 333 | 0.110 | 4.37 |
| | Taw | 409 | 2352 | 5.75 | 287 | 0.122 | 570 | 0.242 | 2.74 |
| Torridge | 177 | 1033 | 5.84 | 119 | 0.115 | 219 | 0.212 | 3.06 | |
| Lyn | 106 | 276 | 2.60 | 117 | 0.424 | 30 | 0.109 | 1.88 | |
| Midlands | Severn | 357 | 4205 | 11.78 | 294 | 0.070 | 25 | 0.006 | 13.18 |
| Environment Agency Wales | Wye | 787 | 5156 | 6.55 | 766 | 0.149 | 48 | 0.009 | 6.33 |
| | Usk | 684 | 6364 | 9.30 | 1157 | 0.182 | 191 | 0.030 | 4.72 |
| | Taff | 30 | 327 | 10.90 | 21 | 0.064 | 115 | 0.352 | 2.40 |
| | Rhymney | 9 | 63 | 7.00 | 8 | 0.127 | 28 | 0.444 | 1.75 |
| | Ogmore | 148 | 1575 | 10.64 | 76 | 0.048 | 418 | 0.265 | 3.19 |
| | Afan | 43 | 515 | 11.98 | 9 | 0.017 | 161 | 0.313 | 3.03 |
| | Neath | 103 | 1215 | 11.80 | 99 | 0.081 | 317 | 0.261 | 2.92 |
| | Tawe | 130 | 1912 | 14.71 | 195 | 0.102 | 144 | 0.075 | 5.64 |
| | Loughor | 110 | 1288 | 11.71 | 51 | 0.040 | 361 | 0.280 | 3.13 |
| | Gwendraeth | 14 | 257 | 18.36 | 0 | 0.000 | 5 | 0.019 | 51.40 |
| | Tywi | 1116 | 11546 | 10.35 | 720 | 0.062 | 2570 | 0.223 | 3.51 |
| | Taf | 121 | 1394 | 11.52 | 92 | 0.066 | 447 | 0.321 | 2.59 |
| | E&W Cleddau | 140 | 1858 | 13.27 | 102 | 0.055 | 681 | 0.367 | 2.37 |
| | Nevern | 99 | 933 | 9.42 | 38 | 0.041 | 674 | 0.722 | 1.31 |
| | Teifi | 787 | 7676 | 9.75 | 571 | 0.074 | 1746 | 0.227 | 3.31 |
| | Aeron | 32 | 381 | 11.91 | 3 | 0.008 | 151 | 0.396 | 2.47 |
| | Ystwyth | 25 | 198 | 7.92 | 3 | 0.015 | 132 | 0.667 | 1.47 |
| | Rheidol | 76 | 1012 | 13.32 | 62 | 0.061 | 231 | 0.228 | 3.45 |
| | Dyfi | 237 | 1525 | 6.43 | 197 | 0.129 | 1215 | 0.797 | 1.08 |
| | Dysynni | 66 | 680 | 10.30 | 3 | 0.004 | 315 | 0.463 | 2.14 |
| | Mawddach | 227 | 1745 | 7.69 | 94 | 0.054 | 325 | 0.186 | 4.16 |
| | Artro | 16 | 112 | 7.00 | 5 | 0.045 | 24 | 0.214 | 3.86 |
| | Dwyrhyd | 19 | 325 | 17.11 | 21 | 0.065 | 78 | 0.240 | 3.28 |
| | Glaslyn | 80 | 736 | 9.20 | 43 | 0.058 | 520 | 0.707 | 1.31 |
| | Dwyfawr | 19 | 325 | 17.11 | 18 | 0.055 | 145 | 0.446 | 1.99 |
| | Llyfni | 22 | 173 | 7.86 | 1 | 0.006 | 63 | 0.364 | 2.70 |
| | Gwyrfai | 3 | 7 | 2.33 | 1 | 0.143 | 0 | 0.000 | - |
| | Seiont | 63 | 681 | 10.81 | 32 | 0.047 | 28 | 0.041 | 11.35 |
| | Ogwen | 58 | 964 | 16.62 | 121 | 0.126 | 65 | 0.067 | 5.18 |
| | Conwy | 227 | 1759 | 7.75 | 190 | 0.108 | 434 | 0.247 | 2.82 |
| Clwyd | 267 | 2357 | 8.83 | 176 | 0.075 | 949 | 0.403 | 2.10 | |
| Dee | 910 | 7983 | 8.77 | 885 | 0.111 | 192 | 0.024 | 7.41 | |
| North West | Ribble | 1037 | 9537 | 9.20 | 1372 | 0.144 | 826 | 0.087 | 4.34 |
| | Wyre | 36 | 207 | 5.75 | 25 | 0.121 | 16 | 0.077 | 5.05 |
| | Lune | 889 | 8254 | 9.28 | 1374 | 0.166 | 1068 | 0.129 | 3.38 |
| | Kent | 294 | 3077 | 10.47 | 539 | 0.175 | 335 | 0.109 | 3.52 |
| | Leven | 38 | 189 | 4.97 | 38 | 0.201 | 34 | 0.180 | 2.63 |
| | Duddon | 70 | 535 | 7.64 | 125 | 0.234 | 183 | 0.342 | 1.74 |
| | Esk (Cumbrian) | 56 | 293 | 5.23 | 90 | 0.307 | 29 | 0.099 | 2.46 |
| | Irt | 72 | 711 | 9.88 | 119 | 0.167 | 84 | 0.118 | 3.50 |
| | Calder | 27 | 194 | 7.19 | 53 | 0.273 | 7 | 0.036 | 3.23 |
| | Ehen | 157 | 2357 | 15.01 | 365 | 0.155 | 353 | 0.150 | 3.28 |
| | Derwent | 600 | 5621 | 9.37 | 1286 | 0.229 | 159 | 0.028 | 3.89 |
| | Ellen | 157 | 2357 | 15.01 | 30 | 0.013 | 35 | 0.015 | 36.26 |
| | Eden | 921 | 8802 | 9.56 | 1571 | 0.178 | 186 | 0.021 | 5.01 |
| | Esk (Border) | 644 | 4330 | 6.72 | 1065 | 0.246 | 1221 | 0.282 | 1.89 |

Notes: Effort data is reported for both salmon and sea trout and can not be separated. (a)The table includes only returns upon which the number of days fished were reported. Some returns contained data for two or more rivers.

Table 19 ESTIMATED PROPORTIONS OF GRILSE AND MULTI-SEA-WINTER (MSW) SALMON IN DECLARED ROD CATCH - 2008

| Environment Agency Region | River | No. grilse | % grilse | No. MSW | % MSW |
|---------------------------|--------------|------------|----------|---------|-------|
| North East | Coquet | 506 | 79 | 135 | 21 |
| | Tyne | 2120 | 69 | 949 | 31 |
| | Wear | 570 | 80 | 142 | 20 |
| | Whole Region | 3453 | 73 | 1301 | 27 |
| Southern | Test | 70 | 75 | 23 | 25 |
| | Itchen | 107 | 88 | 15 | 12 |
| | Whole Region | 178 | 82 | 38 | 18 |
| South West | Frome | 35 | 51 | 34 | 49 |
| | Exe | 260 | 76 | 80 | 24 |
| | Teign | 56 | 65 | 30 | 35 |
| | Dart | 51 | 68 | 24 | 32 |
| | Tavy | 52 | 16 | 77 | 23 |
| | Tamar | 141 | 83 | 28 | 17 |
| | Fowey | 103 | 90 | 11 | 10 |
| | Camel | 343 | 93 | 25 | 7 |
| | Taw | 199 | 58 | 145 | 42 |
| | Torridge | 34 | 61 | 22 | 39 |
| | Lyn | 61 | 71 | 25 | 29 |
| | Whole Region | 1468 | 71 | 596 | 29 |
| Midlands | Severn | 155 | 56 | 124 | 44 |
| Environment Agency Wales | Wye | 247 | 49 | 260 | 51 |
| | Usk | 745 | 65 | 507 | 35 |
| | Ogmore | 48 | 92 | 4 | 8 |
| | Tawe | 164 | 92 | 15 | 8 |
| | Tywi | 580 | 80 | 146 | 20 |
| | Taf | 52 | 82 | 12 | 18 |
| | E&W Cleddau | 48 | 75 | 16 | 25 |
| | Teifi | 423 | 83 | 86 | 17 |
| | Dyfi | 145 | 93 | 10 | 7 |
| | Mawddach | 97 | 87 | 14 | 13 |
| | Ogwen | 96 | 95 | 5 | 5 |
| | Conwy | 175 | 92 | 15 | 8 |
| | Dee | 563 | 85 | 101 | 15 |
| Whole Region | 3736 | 76 | 1152 | 24 | |
| North West | Ribble | 826 | 80 | 207 | 20 |
| | Lune | 1014 | 88 | 136 | 12 |
| | Kent | 371 | 91 | 25 | 9 |
| | Leven | 28 | 93 | 2 | 7 |
| | Irt | 111 | 95 | 6 | 5 |
| | Ehen | 311 | 96 | 12 | 4 |
| | Derwent | 1324 | 92 | 123 | 8 |
| | Eden | 1076 | 78 | 312 | 22 |
| | Esk (Border) | 763 | 92 | 64 | 78 |
| | Whole Region | 6114 | 87 | 935 | 13 |
| England & Wales | | 15104 | 78 | 4146 | 22 |

Notes: The grilse/MSW split is attributed only to fish with a declared capture date and weight
The splitting model uses monthly age-weight data collected from the fish trap on the River Dee, Wales
Whole Region totals includes minor river data not otherwise included in the table

Table 20 Salmon stocking - numbers of eggs, fry, parr and smolts released - 2008

| Environment | | | Unfed | Fed | 0+ | 1+ | 1+ | 2+ |
|---|------------------|-----------------------------------|---------------|---------------|---------------|----------------|----------------|---------------|
| Agency Region | River | Tributary | Ova | Fry | Fry | Parr | Parr | Smolts |
| North East | MainTyne | Main river (plus var. tribs.) | - | - | - | 47,610 | - | - |
| | South Tyne | Main River (plus var. tribs.) | - | - | - | 165,999 | - | - |
| | North Tyne | Main River (tribs + Kielder Burn) | - | - | - | 273,880 | 5,000 | 1,755 |
| | Rede | Main River (plus var. tribs.) | - | - | - | 85,310 | 55,780 | - |
| | Esk (Yorks.) | | - | - | 85,000 | - | - | - |
| | Total | | | - | - | 85,000 | 572,799 | 60,780 |
| Thames | Thames | Main River | - | - | - | - | - | 10,998 |
| | | Kennet | - | - | - | - | 5,377 | 14,027 |
| | Total | | - | - | - | - | 5,377 | 25,025 |
| Southern | Itchen (Egg box) | | - | 18,854 | - | - | - | - |
| | Total | | - | 18,854 | - | - | - | - |
| South West | Torridge | | - | 4,800 | - | - | - | - |
| | Otter | | - | 1,000 | - | - | - | - |
| | Frome | Tadnoll Brook | - | - | - | - | 8,000 | - |
| | Exe | | - | 2,000 | - | - | - | - |
| | Total | | - | 7,800 | - | - | 8,000 | - |
| Midlands | Severn | Tribs. Inc Teme and Leadon | - | 51,400 | 55,000 | - | 10,129 | - |
| | Trent | Dove | - | - | - | 130,000 | - | - |
| | | Dove (River Churnet) | - | - | - | 30,000 | - | - |
| | Total | | - | 51,400 | 55,000 | 160,000 | 10,129 | - |
| Environment Agency Wales | Taff | | - | - | 2,500 | 100,000 | - | - |
| | Ely | | - | - | - | 5,000 | - | - |
| | Seiont | | - | - | - | 2900 | - | - |
| | Conwy | Main river, Lledr + Llugwy | - | - | 14,600 | 13,000 | 3,400 | 16,000 |
| | Mawddach | Main river, Eden and Wnion | - | - | 5,000 | 7,600 | - | 8,600 |
| | Dee | Main river (plus var. tribs.) | - | - | 44,700 | 29,700 | 31,300 | 19,500 |
| | Clwyd | | - | - | 12,000 | - | - | - |
| | Total | | - | - | 76,300 | 58,200 | 34,700 | 44,100 |
| North West | Ribble | Hodder | - | - | - | - | - | 4,226 |
| | Lune | Main River (plus var. tribs.) | - | - | 35,000 | - | - | 25,000 |
| | Eden | | 10,000 | - | - | - | - | - |
| | Total | | 10,000 | - | - | - | - | - |
| England and Wales | | | 10,000 | 78,054 | 216,300 | 790,999 | 118,986 | 129,905 |
| <p>Notes: 1+ Parr are those stocked out on or after 1st January in the year after they hatched.</p> <p>1+ Smolts are those stocked out on or after 1st January in the 1st year after they hatched.</p> <p>2+ Smolts are those stocked out on or after 1st January in the 2nd year after they hatched.</p> | | | | | | | | |

Section 7

References

ANON, 2009. Annual Assessment of Salmon Stocks and Fisheries in England and Wales, 2007 (preliminary assessment for ICES, April 2008) Cefas/EA:97 pp. ISBN: 9780907545254.

RUSSELL, I.C., IVES, M.J., POTTER, E.C.E., BUCKLEY, A.A. and DUCKETT, L., 1995. Salmon and migratory trout statistics for England and Wales, 1951-1990. Fisheries Research Data Report (38):252 pp.

ENVIRONMENT AGENCY, 2008. Salmonid and Freshwater Fisheries Statistics for England and Wales 2008.

Section 8

Glossary

Cefas Formerly CEFAS - The Centre for Environment, Fisheries & Aquaculture Science

EIFAC European Inland Fisheries Advisory Commission

Grilse Salmon that has spent not more than one winter at sea before maturing, also known as 1 sea winter (1SW) fish

ICES International Council for the Exploration of the Seas

Migratory trout Sea trout, referred to as sewin in Wales
Migratory form of trout *Salmo trutta* (L.)

MSW Multi-Sea-Winter; a salmon that has spent two or more winters at sea before maturing

NASCO North Atlantic Salmon Conservation Organisation

Nets Instruments other than rod and line (including nets and fixed engines such as cribbs, putts, putchers, baulks, fishing weirs and traps as used for the capture of migratory salmonids)

NLO Net Limitation Order

**Would you like to find out more about us,
or about your environment?**

Then call us on

08708 506 506* (Mon-Fri 8-6)

email

enquiries@environment-agency.gov.uk

or visit our website

www.environment-agency.gov.uk

incident hotline 0800 80 70 60 (24hrs)

floodline 0845 988 1188

* Approximate calls costs: 8p plus 6p per minute (standard landline).
Please note charges will vary across telephone providers.



Environment first: This publication is printed on paper made from 100 per cent previously used waste. By-products from making the pulp and paper are used for composting and fertiliser, for making cement and for generating energy.

????????????????????