



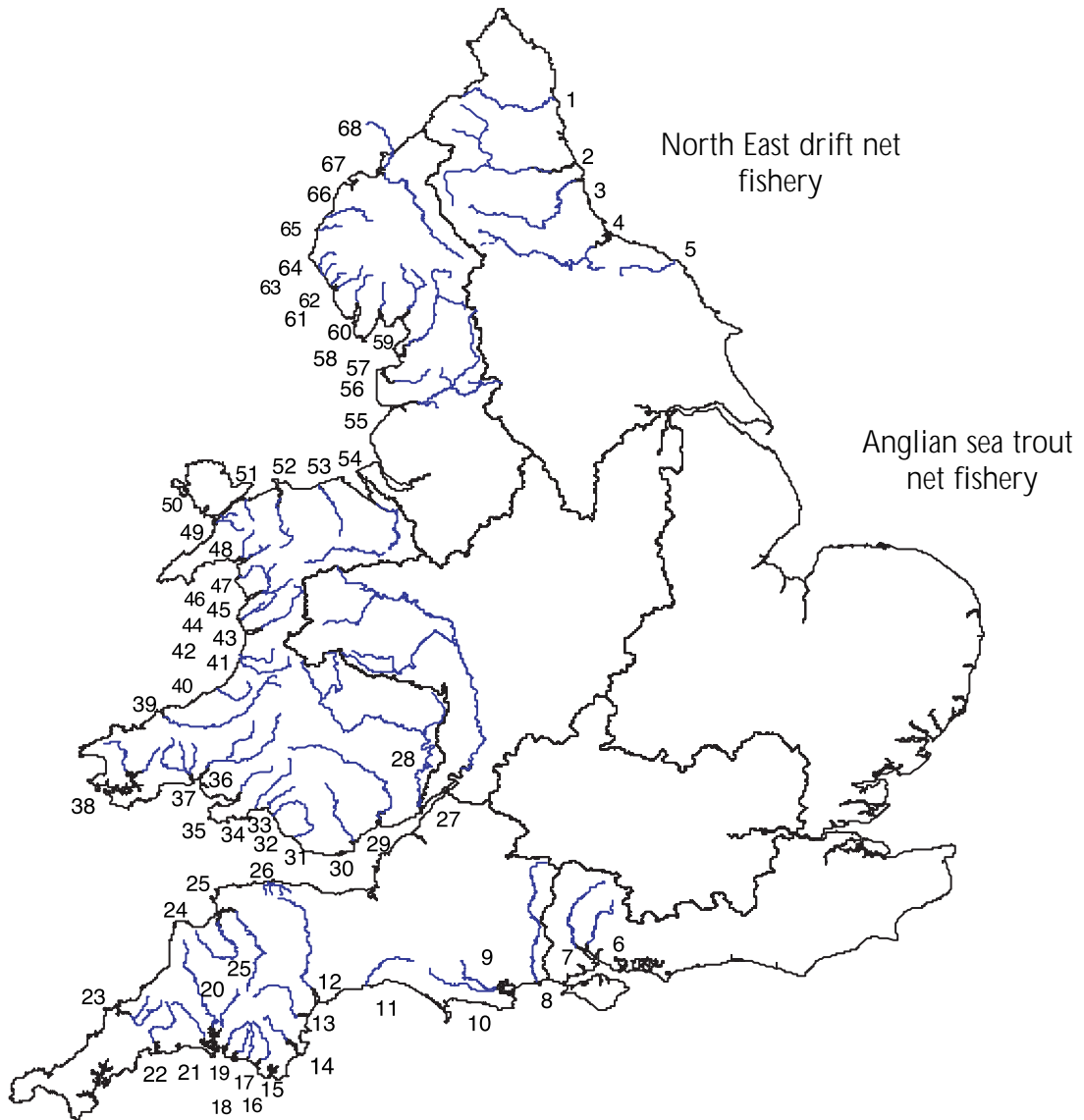
ENVIRONMENT AGENCY

SALMONID AND FRESHWATER FISHERIES STATISTICS FOR ENGLAND AND WALES, 2003

(Declared catches of salmon and migratory trout by rods, nets and other instruments)

This report, prepared by the Environment Agency and is one of a long-term series. It contributes to our objectives of communicating our fisheries monitoring programme.

Major salmon and sea trout rivers and fisheries in England and Wales



Key					
North East	South West				North West
1 Coquet	8 Avon (Hants.)	22 Fowey	32 Afan	46 Artro	55 Ribble
2 Tyne	9 Piddle	23 Camel	33 Neath	47 Dwyrhyd	56 Wyre
3 Wear	10 Frome	24 Torridge	34 Tawe	48 Glaslyn	57 Lune
4 Tees	11 Axe	25 Taw	35 Loughor	49 Gwyrfai	58 Kent
5 Esk (Yorks.)	12 Exe	26 Lyn	36 Tywi	50 Seiont	59 Leven
	13 Teign		37 Taf	51 Ogwen	60 Crake
Southern	14 Dart	Midlands	38 Cleddau	52 Conwy	61 Duddon
6 Itchen	15 Avon (Devon)	27 Severn	39 Teifi	53 Clwyd	62 Esk (Cumbrian)
7 Test	16 Erme		40 Aeron	54 Dee	63 Irt
	17 Yealm	Wales	41 Ystwyth		64 Ehen
	18 Plym	28 Wye	42 Rheidol		65 Derwent
	19 Tavy	29 Usk	43 Dyfi		66 Ellen
	20 Tamar	30 Taff	44 Dysynni		67 Eden
	21 Lynher	31 Ogmore	45 Mawddach		68 Esk (Border)

The principal aim of the Environment Agency in respect of fisheries is to maintain, improve and develop fish stocks, the basic fisheries resource, in order to optimise the social and economic benefits from their sustainable exploitation.

To achieve this aim, we have set the following objectives:

- conserve and develop sustainable fisheries for salmon, trout, freshwater fish, eels and, where appropriate sea fish;
- regulate fisheries through the enforcement of a consistent series of licences, orders, bye-laws and consents;
- monitor the performance of fisheries in our rivers and inland waters, estuaries and, where appropriate coastal waters, including the status of fish stocks; their habitat; fishing effort and catches;
- communicate with our customers and understand their needs;
- produce clear strategies for the long-term management of each of the main types of fishery, i.e. for salmon, trout, coarse fish and eels;
- secure a fair and robust funding base for necessary fisheries work incorporating full recovery of costs from those who damage the environment or whose activities directly cause fisheries work to be undertaken;
- develop our scientific and technical understanding of fisheries including the application of best practice to fisheries management and investment in our staff's skills and professional development. Focused R&D will aid in the achieving of our objectives.

Contents

- 1 Introduction
- 2 The Environment Agency and its Regions
- 3 Rod licence catch returns
- 4 National overview and summary of main findings, 2003
- 5 Regional summaries
- 6 Data tables 1 to 23
- 7 Figures 1 to 12
- 8 References
- 9 Glossary
- 10 Appendix 1 -
Summary of national bye-laws to protect early-running salmon
- 11 Appendix 2 -
National catch return bye-laws

1 Introduction

This report is the Environment Agency's ninth collation of salmon and migratory trout catch statistics for England and Wales. From 1989 to 1994, these statistics were published by the National Rivers Authority (NRA). The Ministry of Agriculture, Fisheries and Food, Directorate of Fisheries Research also included them in its Data Report series between 1983 and 1988.

This report is a reference document of declared salmonid catches in England and Wales. Data from a number of Agency-operated electronic fish-counters and traps are also included. Salmon stock assessment data (including provisional catches and run estimates) are published in an annual assessment for the

International Council for the Exploration of the Seas (ICES). The eighth report in this series was published jointly by the Environment Agency and the Centre for Environment, Fisheries & Aquaculture Science (CEFAS) in March 2004. The catch data recorded here represent declared catches only. This document is not an entirely accurate record of the total numbers of fish landed. Furthermore, the relationship between catch and stock size is not always straight forward, regardless of the accuracy of the catch data. Great care must be taken therefore in interpreting these data.

2 The Environment Agency and its Regions

The Environment Agency is a non-departmental public body established by the Environment Act 1995. It has taken over the functions of its predecessors, the National Rivers Authority, Her Majesty's Inspectorate of Pollution, Waste Regulation Authorities and some parts of the

Department of the Environment. The Agency came into effect on 1 April 1996.

There are 8 Agency Regions: North East, Anglian, Thames, Southern, South West, Midlands, Environment Agency Wales and North West.

3 Rod Licence Catch Returns

In 2003, 29,936 migratory salmonid rod licences were issued compared with 29,407 in 2002.

In November 2003, for the ninth consecutive year, the Agency sent a reminder to all holders of a salmon and sea trout licences to declare their catch returns. The timing of the reminder coincided with the end of most rod-fishing seasons. As in years 1994-2001, the effect of this reminder was marked compared with 1992 and 1993 returns, when no reminders were sent.

In an attempt to further improve reporting rates, the Agency now also routinely issues second reminders to anglers who fail to submit a return in response to the first reminder. These were issued in February 2004. We believe that the returns published here record approximately 90 per cent of all migratory salmonids caught in England and Wales.

4 National Overview and Summary of Main Findings, 2003

Summary of declared salmon and sea trout rod catches, 2003

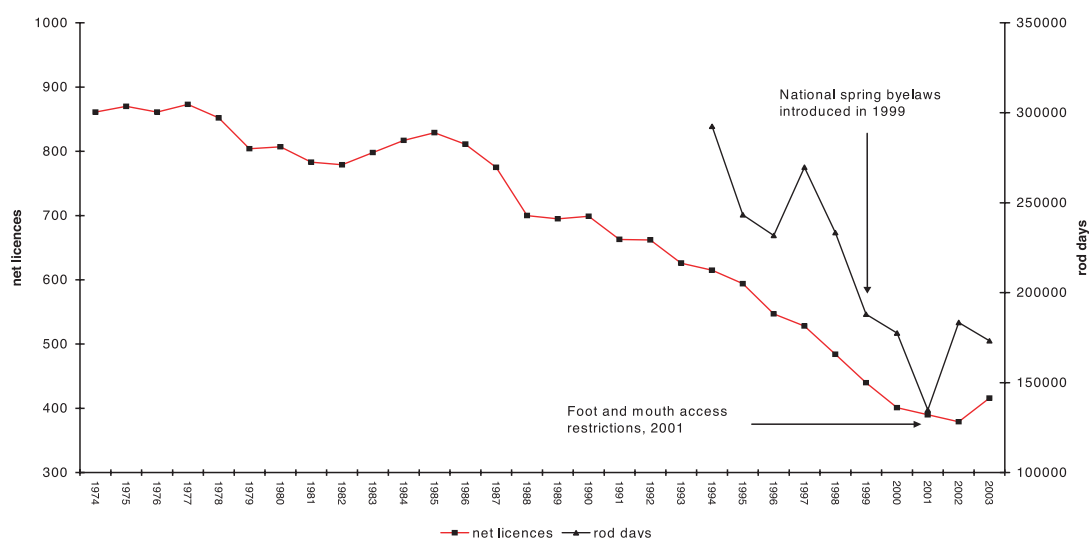
RODS	Salmon		Sea trout	
	Number	Weight (t.)	Number	Weight (t.)
Total				
Caught	11,519	48.5	45,101	38.3
Retained	5,094	20.3	20,698	22.2
Released	6,425 (56%)	28.2	24,403 (54%)	16.1

NETS	Salmon		Sea trout	
	Number	Weight (t.)	Number	Weight (t.)
Total				
Caught	17,219	69.2	29,234	52.1
Retained	17,206	69.2	29,234	52.1
Released	13*	0.052	0	0

* 13 salmon released by Twyi/Teifi nets.

- The number of days declared fished by rods in 2003 (173,246) decreased by six per cent compared with 2002, but decreased by five per cent compared with the mean of the previous five years.
- The number of net licences issued in 2003 (416) fell by four per cent compared with 2002. Since 1985, the number of net licences issued decreased by fifty-four per cent (from 897 to 416).
- National bye-laws aimed at safeguarding spring salmon continued to apply in 2003 (see Appendix 1 for details).
- Low flows resulted in generally poor angling conditions, particularly for salmon, from late summer until the middle of October.
- The declared salmon rod catch in 2003 (11,519) was twenty-five per cent down on the previous year and twenty-five per cent below the 5-year mean (1998-2002).
- Salmon net catches in 2003 (17,219) were fifty-three per cent down on 2002, but decreased by forty per cent compared with the mean of the previous five years.
- The 2003 sea trout rod catch (45,101 fish) was lower than that recorded for 2002, but equal to the 5-year mean (1998-2002).
- The 2003 sea trout net catch of 29,234 fish represents a decrease of approximately twenty-five per cent compared with the mean of the previous five years.
- In 2003, fifty-six per cent of salmon and fifty-four per cent of sea trout were released by rods following capture. Release rates for salmon were, again the highest reported to date.
- Bye-law exempted net fisheries released a total of 13 salmon before 1 June.

Net licences issued (1974-2003) and rod days fished (1994-2003), England and Wales

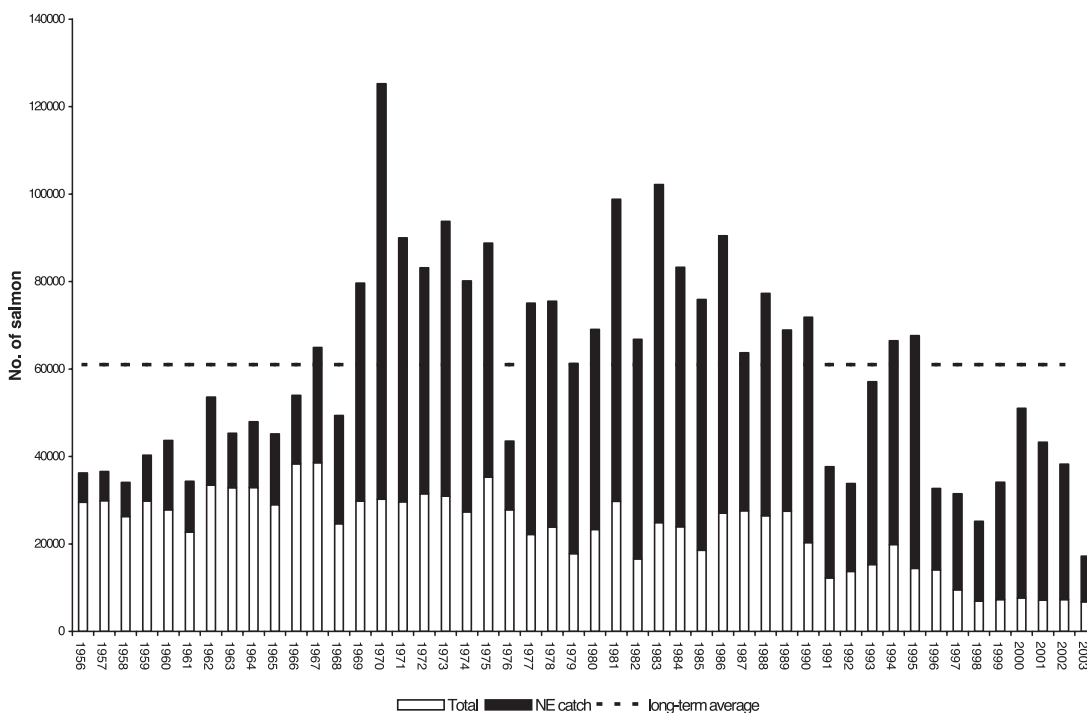


- The river with the highest declared rod catch of salmon was the Tyne (2,163), followed by the Lune (823), the Eden (808), the Wear (586) and the Coquet/Ribble (556).
- The river with the highest declared rod catch of sea trout was the Teifi (3,997) followed by the Lune (2,268), the Tyne (1,585), the Camel (1,498) and the Dyfi (1,474)
- Rod catches of grilse in 2003 (6,947) were thirty-two per cent lower than in 2002. Overall, the MSW catch (3,416) was slightly higher than in 2002 (up 5 per cent) and higher than the mean of the previous five years (up 35 per cent).

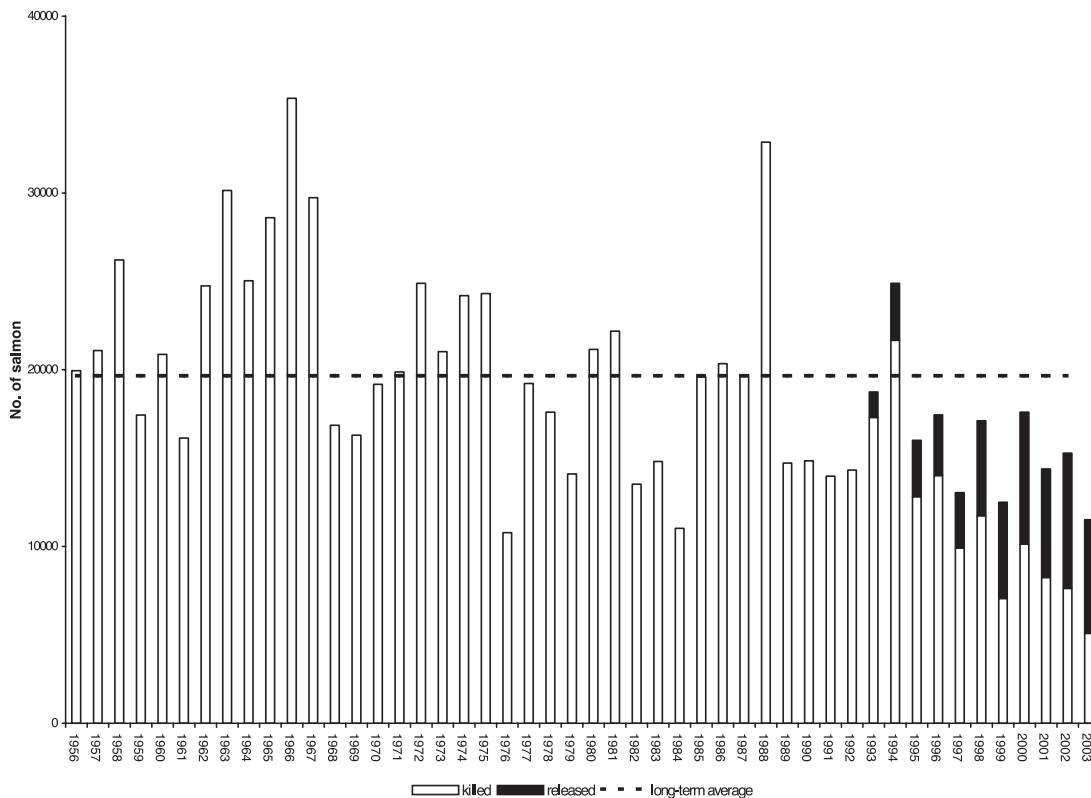
Summary of effort and rod and net catches in England and Wales in 2003, including percentage change compared with 2002, and with the five-year mean (1998-2002)

England and Wales	2003	2002	5-yr. Mean (1998-2002)	% change (+/-)	
				2003 on 2002	2003 on 5yr. mean
RODS					
Migratory licences issued	29,936	29,407	29,111	+2%	+3%
Days declared fished	173,246	183,452	183,127	- 6%	- 5%
Salmon rod catch	11,519	15,282	15,375	- 25%	- 25%
Salmon released (% released)	6,425 (56%)	7,658 (50%)	5,358 (35%)	-	-
Sea trout rod catch	45,101	49,796	45,324	-9%	0%
Sea trout released (% released)	24,403 (54%)	25,170 (51%)	23,058 (51%)	-	-
NETS					
Net licences issued	416	432	419	- 4%	- 1%
Salmon net catch	17,219	38,279	38,369	- 55%	- 55%
Sea trout net catch	29,234	37,018	39,034	- 21%	- 25%

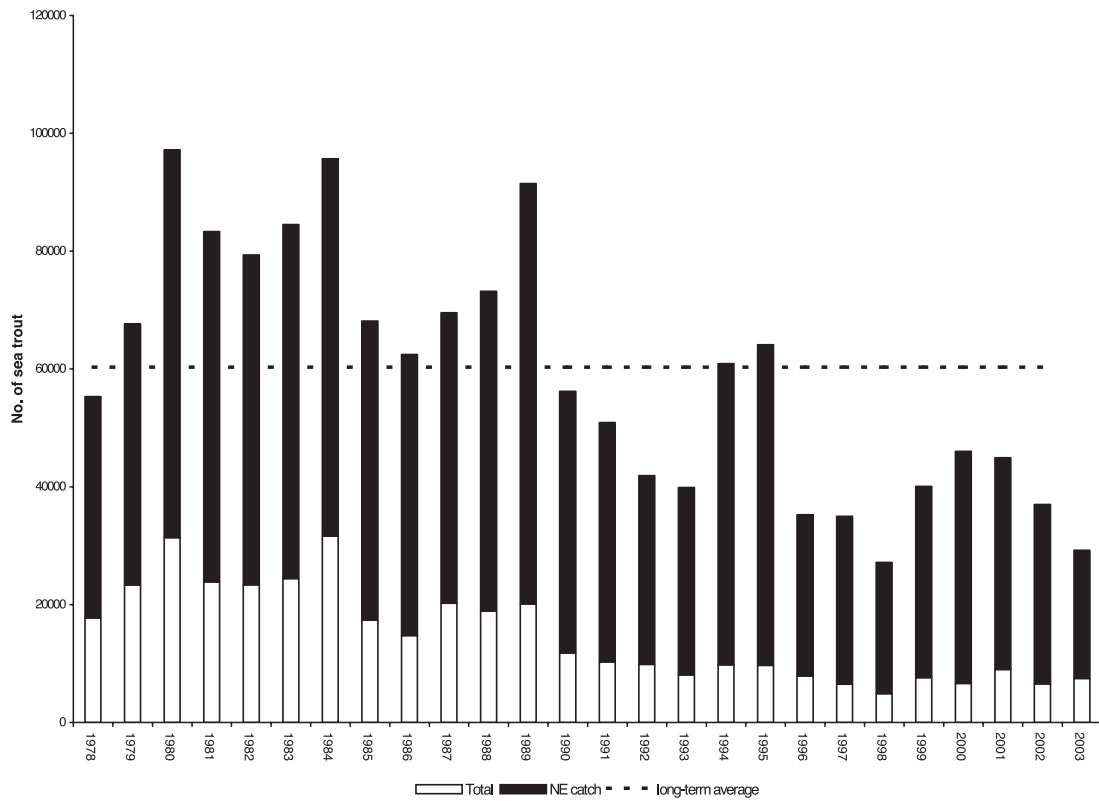
Total declared salmon net and fixed engine catch for England and Wales, 1956 - 2003
(shaded area indicates the catch for the North East coast fishery)



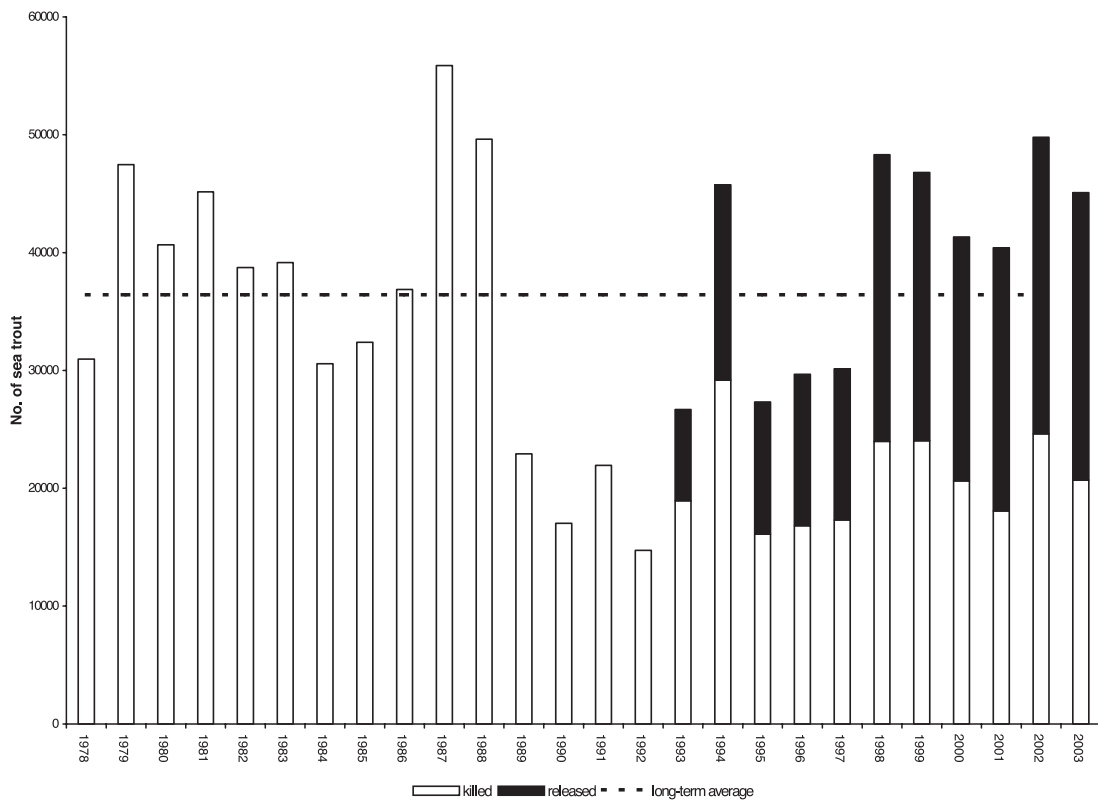
Total declared salmon rod-catch for England and Wales, 1956 - 2003
(shaded area indicates fish caught and released)



Total declared migratory trout net and fixed engine catch for England and Wales, 1978 - 2003
(shaded area indicates the catch for the North East coast fishery)



Total declared migratory trout rod-catch for England and Wales, 1978 - 2003
(shaded area indicates fish caught and released)



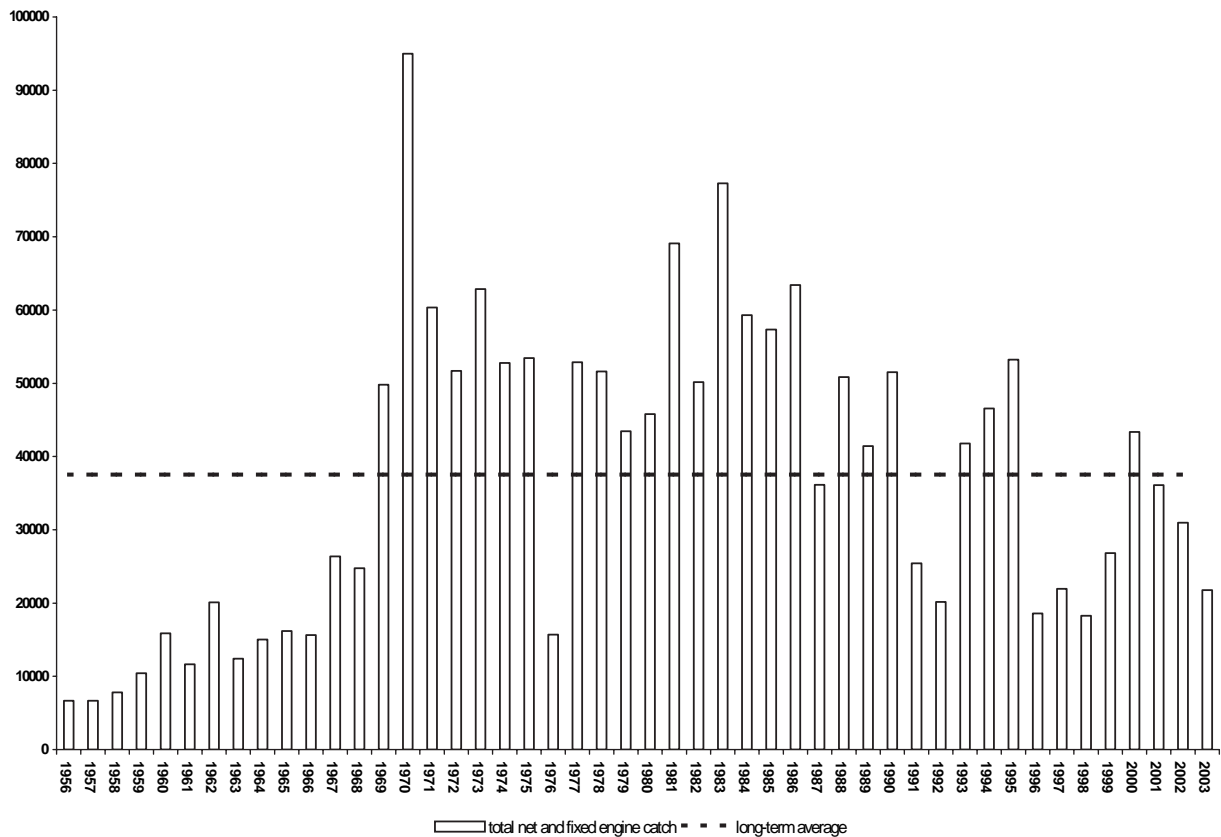
5 Regional summaries

North East Region

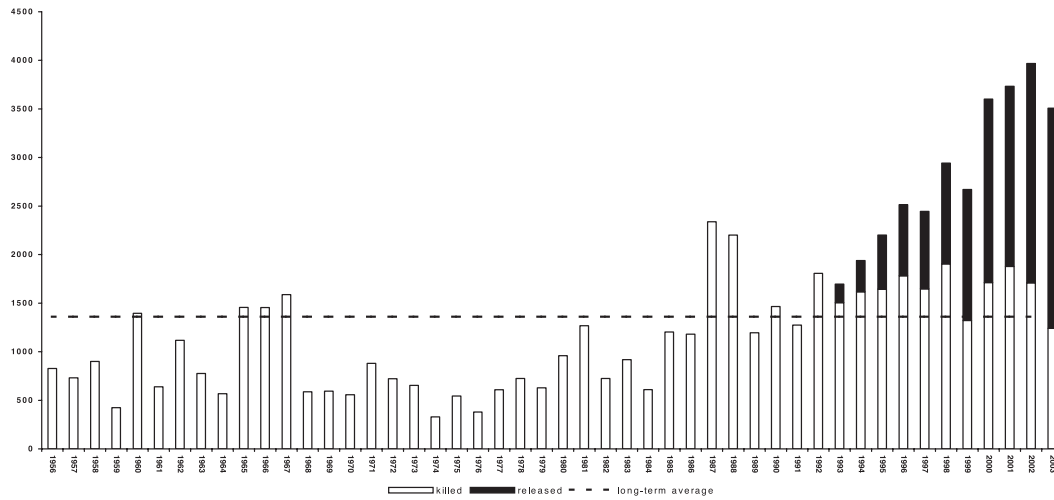
Summary of effort and rod and net catches in North East Region in 2003, including percentage change compared with 2002, and with the five-year mean (1998-2002)

North East Region		5-yr. Mean (1998-2002)	% change (+/-)		
	2003		2002	2003 on 2002	2003 on 5yr. mean
RODS					
Migratory licences issued	4,651	4,957	4,762	- 6%	- 2%
Days declared fished	31,030	34,423	32,826	- 10%	- 5%
Salmon rod catch	3,507	3,967	3,382	- 12%	- 25%
Salmon released (% released)	2,265 (65%)	2,257 (57%)	1,677 (50%)	-	-
Sea trout rod catch	3,933	5,973	4,827	- 34%	- 19%
Sea trout released (% released)	1,912 (49%)	2,685 (45%)	1,804 (37%)	-	-
NETS					
Net licences issued	62	86	86	- 28%	- 28%
Salmon net catch	10,435	30,980	31,109	- 66%	- 66%
Sea trout net catch	21,771	30,450	32,097	- 29%	- 32%

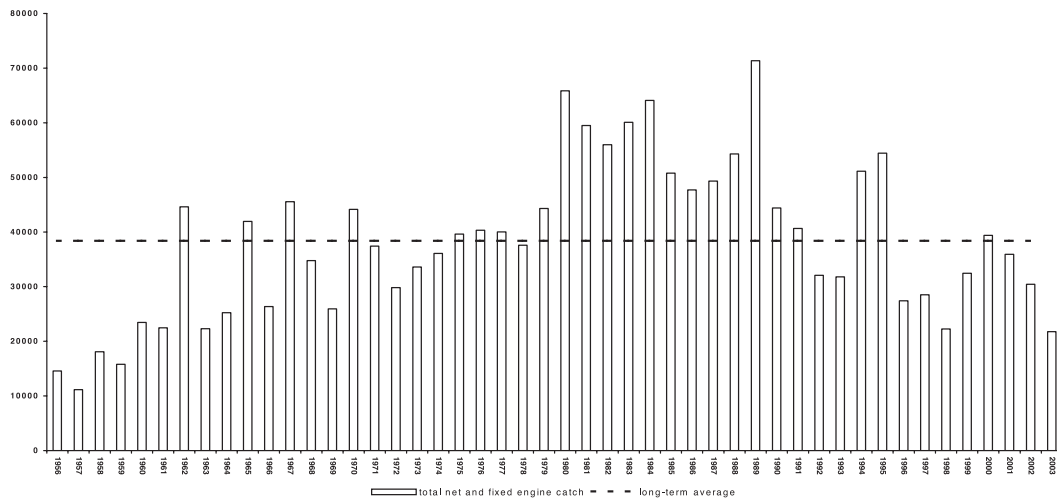
Total declared salmon net and fixed engine catch for North East Region, 1956 – 2003



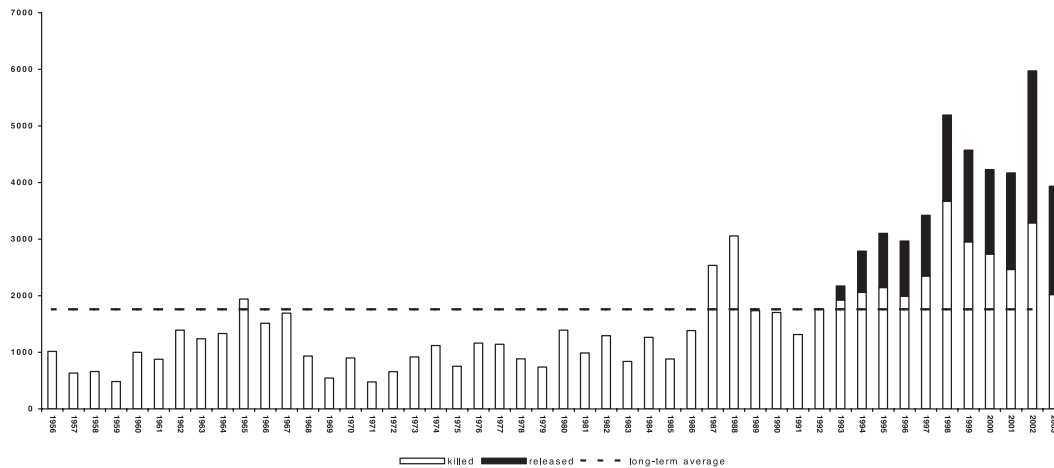
Total declared salmon rod-catch for North East Region, 1956-2003
(shaded area indicates fish caught and released)



Total declared migratory trout net and fixed engine catch for North East Region, 1956-2003



Total declared migratory trout rod-catch for North East Region, 1956-2003
(shaded area indicates fish caught and released)

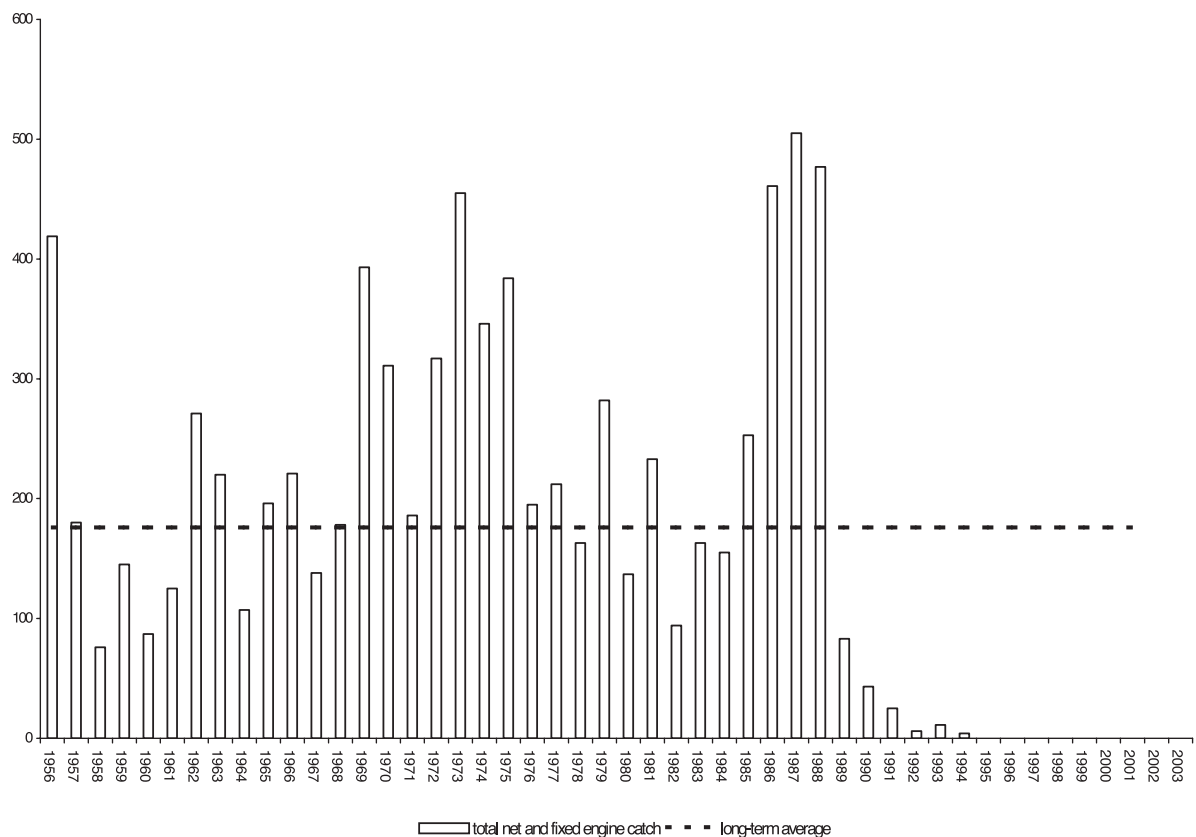


Southern Region

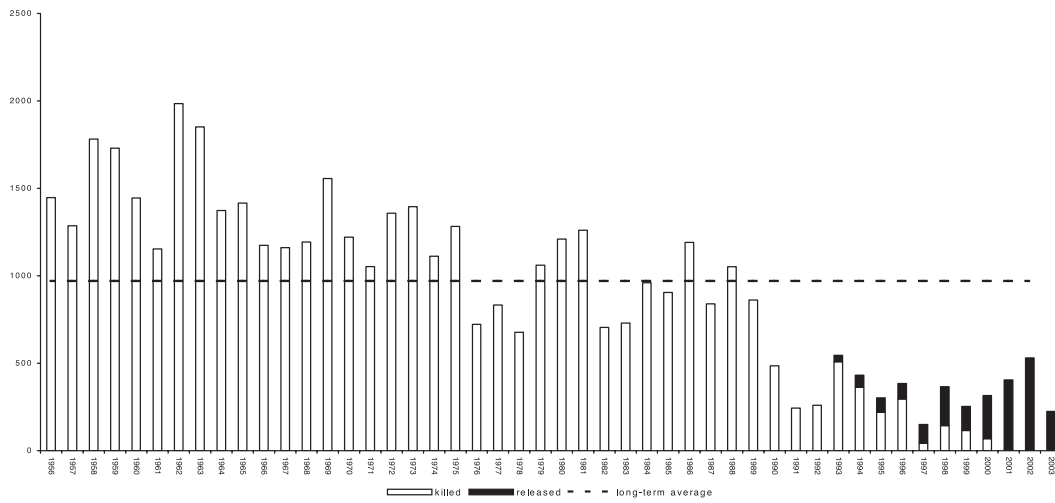
Summary of effort and rod and net catches in Southern Region in 2003, including percentage change compared with 2002, and with the five-year mean (1998-2002)

Southern Region			5-yr. Mean (1998-2002)	% change (+/-)	
	2003	2002		2003 on 2002	2003 on 5yr. mean
RODS					
Migratory licences issued	1,149	904	828	+27%	+39%
Days declared fished	2,663	2,462	2,093	+8%	+27%
Salmon rod catch	225	531	374	- 58%	- 40%
Salmon released (% released)	225 (100%)	528 (99%)	306 (82%)	-	-
Sea trout rod catch	1,343	1,515	1,146	-11%	+17%
Sea trout released (% released)	932 (69%)	931 (61%)	741 (65%)	-	-
NETS					
Net licences issued	0	1	1	- 100%	- 100%
Salmon net catch	0	0	0	0%	-
Sea trout net catch	0	24	14	- 100%	- 100%

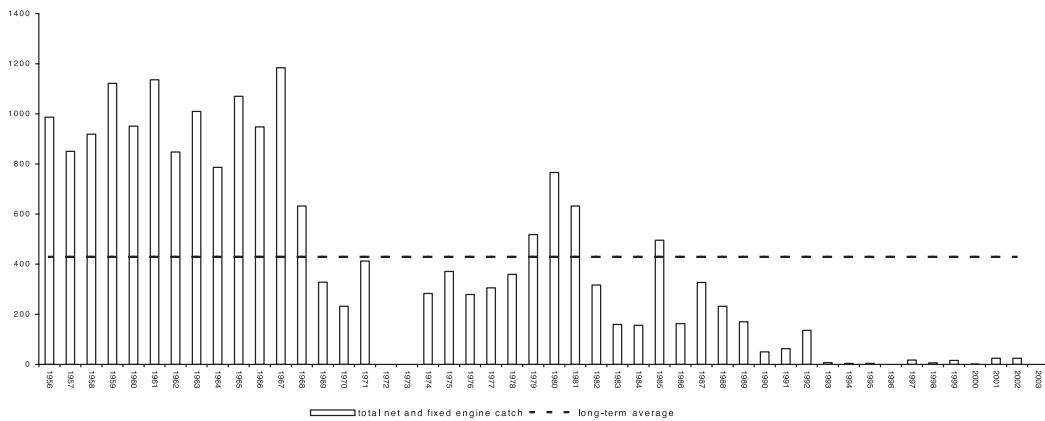
Total declared salmon net and fixed engine catch for Southern Region, 1956 – 2003



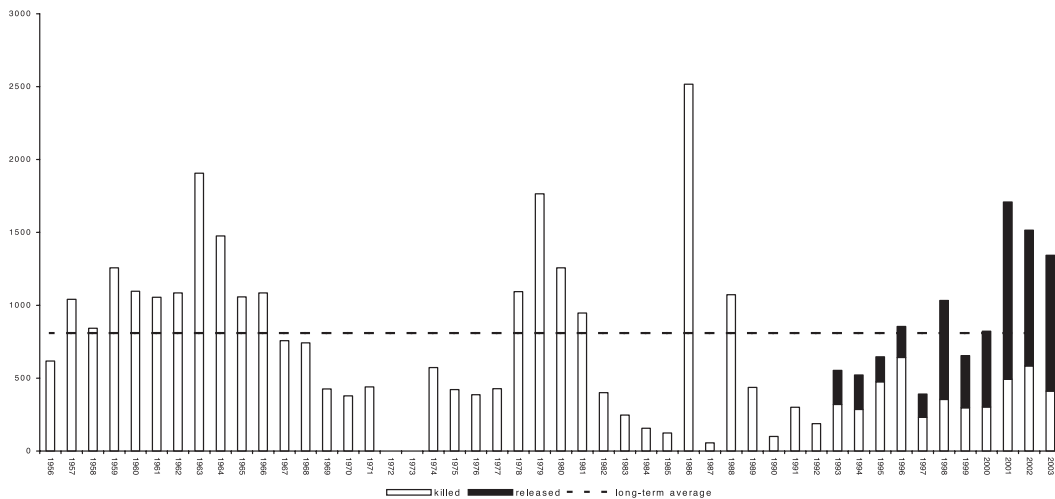
Total declared salmon rod-catch for Southern Region, 1956-2003 (shaded area indicates fish caught and released)



Total declared migratory trout net and fixed engine catch for Southern Region, 1956-2003



Total declared migratory trout rod-catch for Southern Region, 1956-2003 (shaded area indicates fish caught and released)

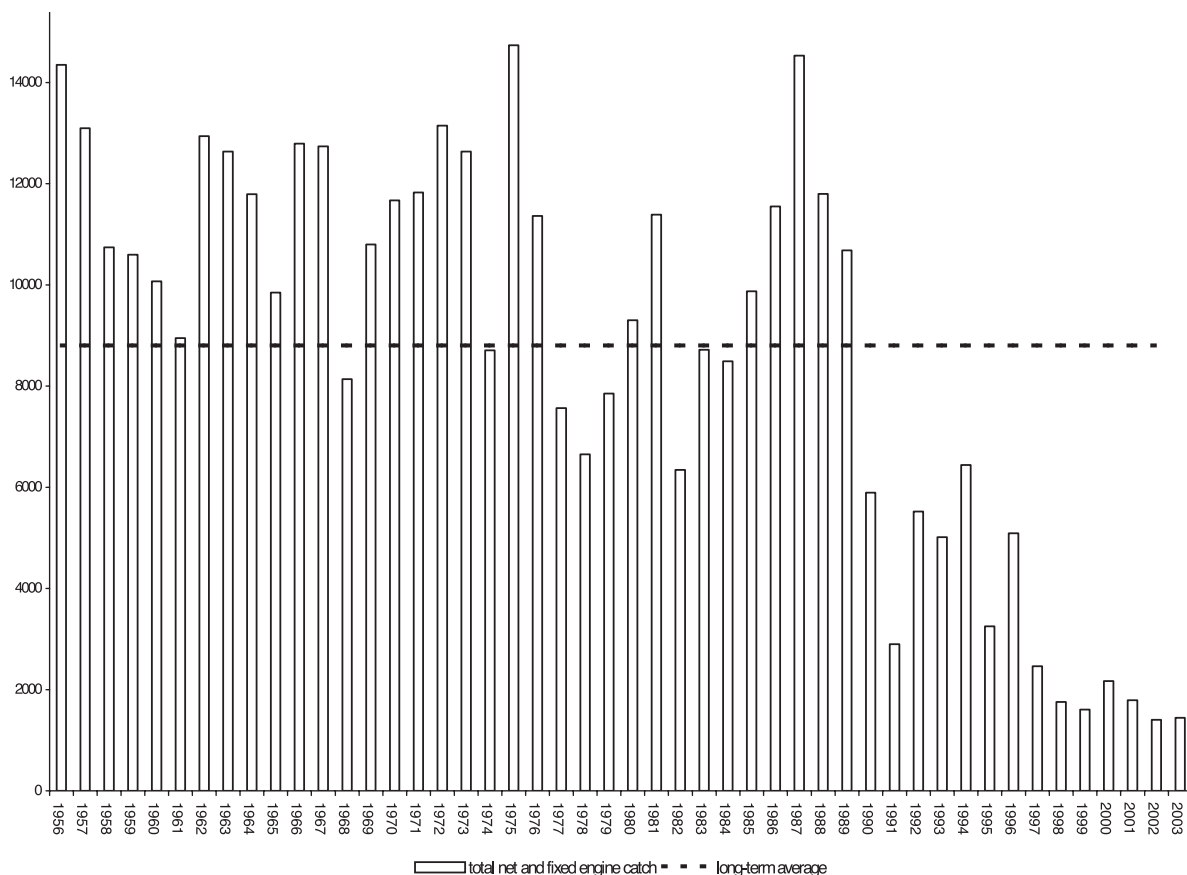


South West Region

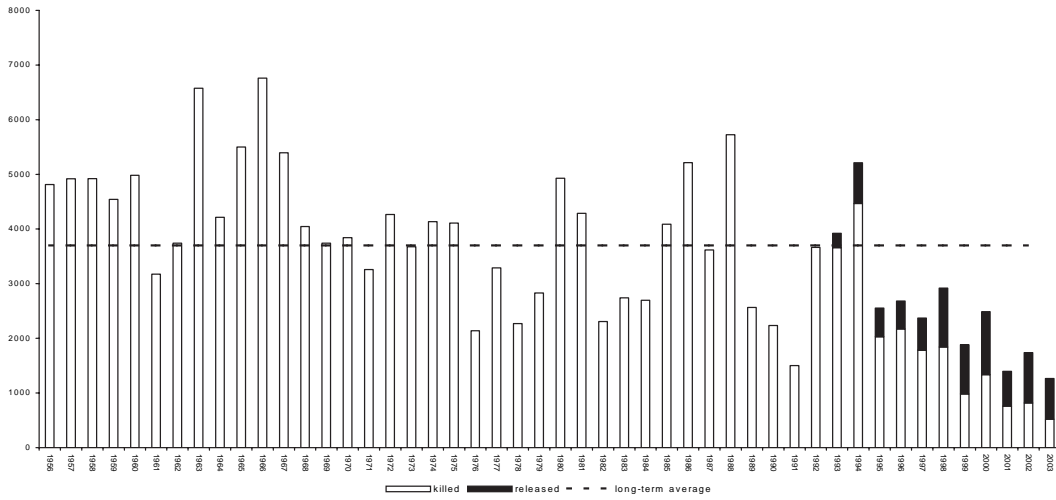
Summary of effort and rod and net catches in South West Region in 2003, including percentage change compared with 2002, and with the five-year mean (1998-2002)

South West Region			5-yr. Mean (1998-2002)	% change (+/-)	
	2003	2002		2003 on 2002	2003 on 5yr. mean
RODS					
Migratory licences issued	3,490	4,191	4,494	- 17%	- 22%
Days declared fished	23,322	25,526	24,685	- 9%	- 6%
Salmon rod catch	1,266	1,737	2,084	- 27%	- 39%
Salmon released (% released)	746 (59%)	920 (53%)	936 (45%)	-	-
Sea trout rod catch	9,344	8,253	8,366	+ 13%	+12%
Sea trout released (% released)	5,353 (57%)	4,347 (53%)	4,384 (52%)	-	-
NETS					
Net licences issued	68	70	80	- 3%	- 15%
Salmon net catch	1,444	1,404	1,747	+ 3%	- 17%
Sea trout net catch	1,798	2,461	2,007	- 27%	- 10%

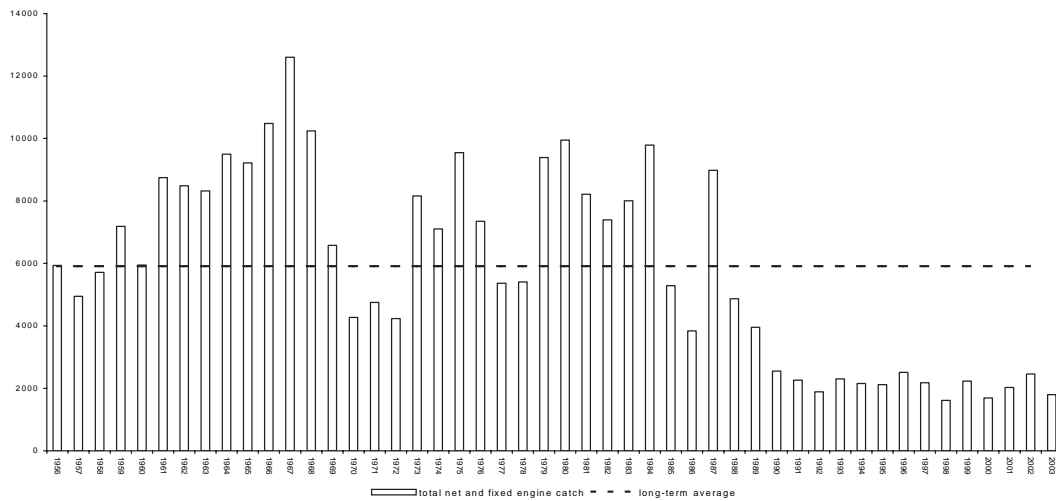
Total declared salmon net and fixed engine catch for South West Region, 1956 – 2003



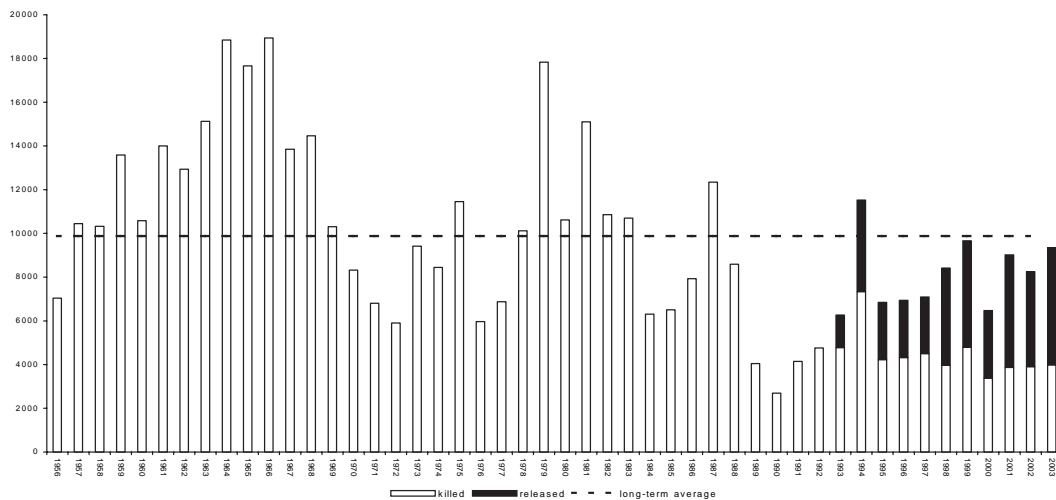
Total declared salmon rod-catch for South West Region, 1956-2003
(shaded area indicates fish caught and released)



Total declared migratory trout net and fixed engine catch for South West Region, 1956-2003



Total declared migratory trout rod-catch for South West Region, 1956-2003
(shaded area indicates fish caught and released)

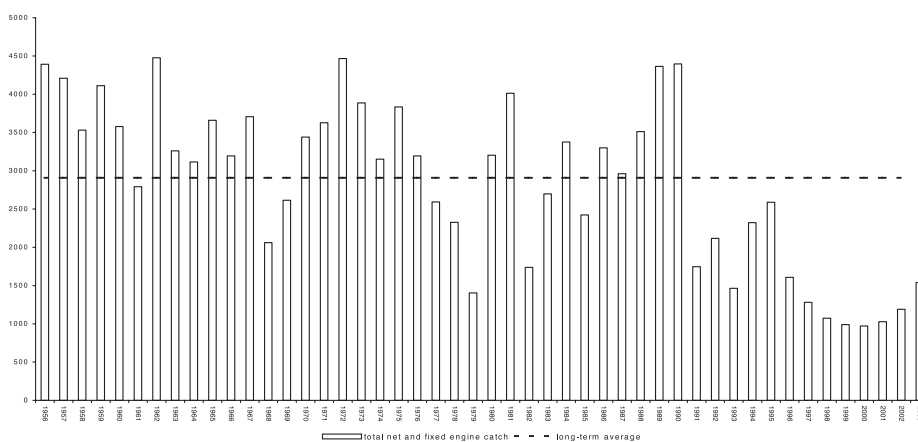


Midlands Region

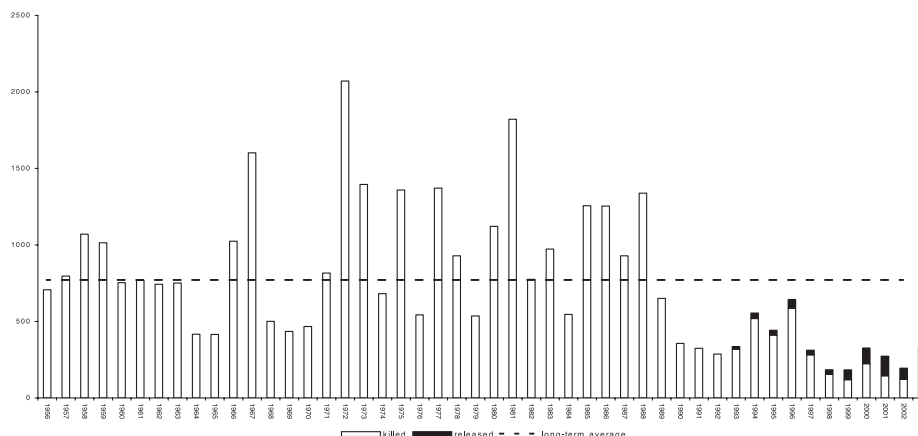
Summary of effort and rod and net catches in Midlands Region in 2003, including percentage change compared with 2002, and with the five-year mean (1998-2002)

Midlands Region			5-yr. Mean (1998-2002)	% change (+/-)	
	2003	2002		2003 on 2002	2003 on 5yr. mean
RODS					
Migratory licences issued	2,606	2,232	2,167	+17%	+20%
Days declared fished	5,302	4,720	6,539	+12%	-19%
Salmon rod catch	333	195	233	+71%	+43%
Salmon released (% released)	153 (46%)	73 (37%)	80 (34%)	-	-
Sea trout rod catch	12	0	0	-	-
Sea trout released (% released)	6 (50%)	0 (0%)	0 (0%)	-	-
NETS					
Net licences issued	39	24	30	+63%	+30%
Salmon net catch	1,540	1,190	1,050	+29%	+47%
Sea trout net catch	0	0	0	-	-

Total declared salmon net and fixed engine catch for Midlands Region, 1956 – 2003



Total declared salmon rod-catch for Midlands Region, 1956-2003
(shaded area indicates fish caught and released)

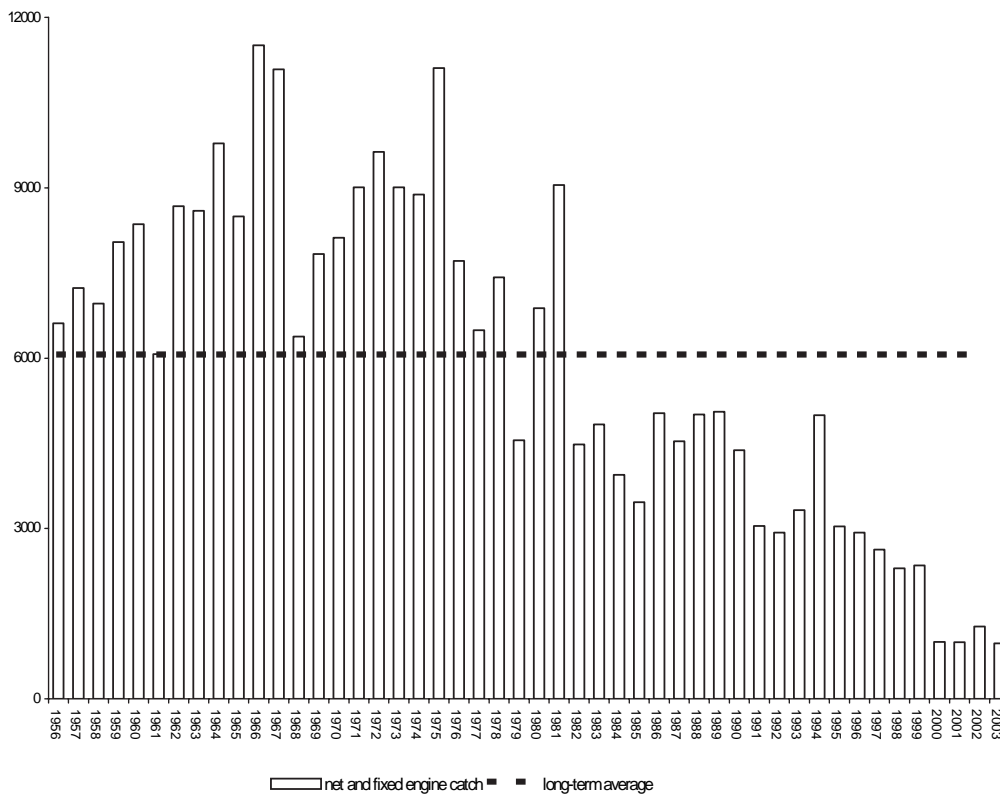


Environment Agency Wales

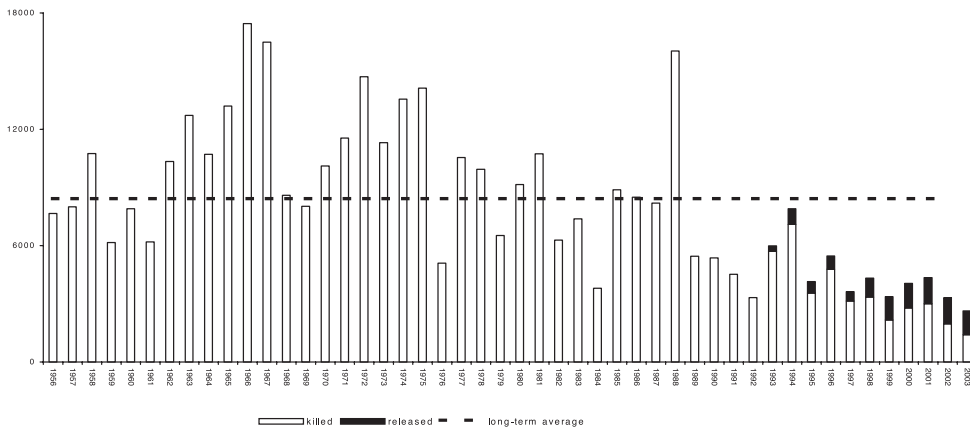
Summary of effort and rod and net catches in Wales in 2003, including percentage change compared with 2002, and with the five-year mean (1998-2002)

Wales			5-yr. Mean (1998-2002)	% change (+/-)	
	2003	2002		2003 on 2002	2003 on 5yr. mean
RODS					
Migratory licences issued	6,720	7,821	7,801	- 14%	- 14%
Days declared fished	72,719	73,328	71,065	- 1%	+2%
Salmon rod catch	2,632	3,312	3,881	- 21%	- 32%
Salmon released (% released)	1,172 (45%)	1,346 (41%)	1,228 (32%)	-	-
Sea trout rod catch	22,503	25,689	23,027	- 12%	- 2%
Sea trout released (% released)	11,005 (49%)	12,618 (49%)	11,488 (50%)	-	-
NETS					
Net licences issued	65	76	71	- 14%	- 8%
Salmon net catch	975	1,275	1,585	- 24%	- 38%
Sea trout net catch	1,964	1,943	1,878	+1%	+5%

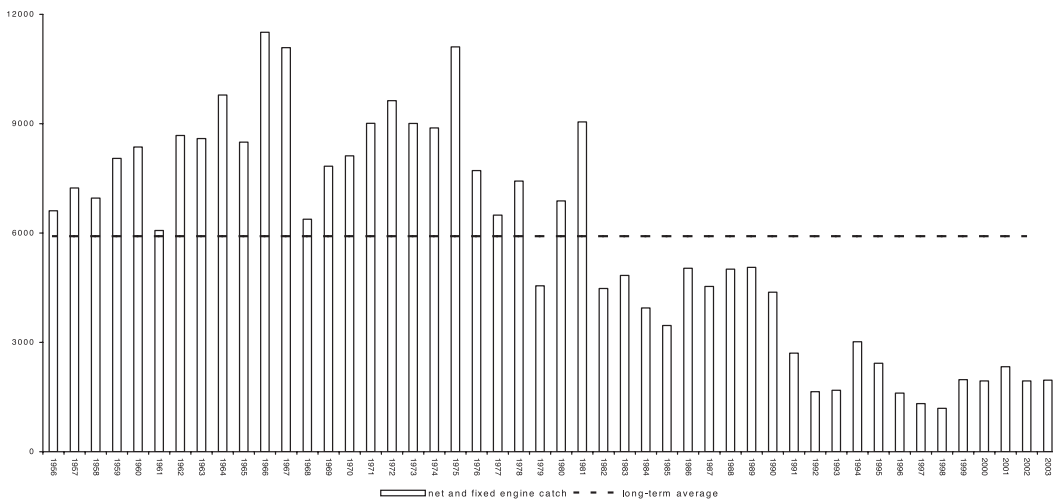
Total declared salmon net and fixed engine catch for Wales, 1956 – 2003



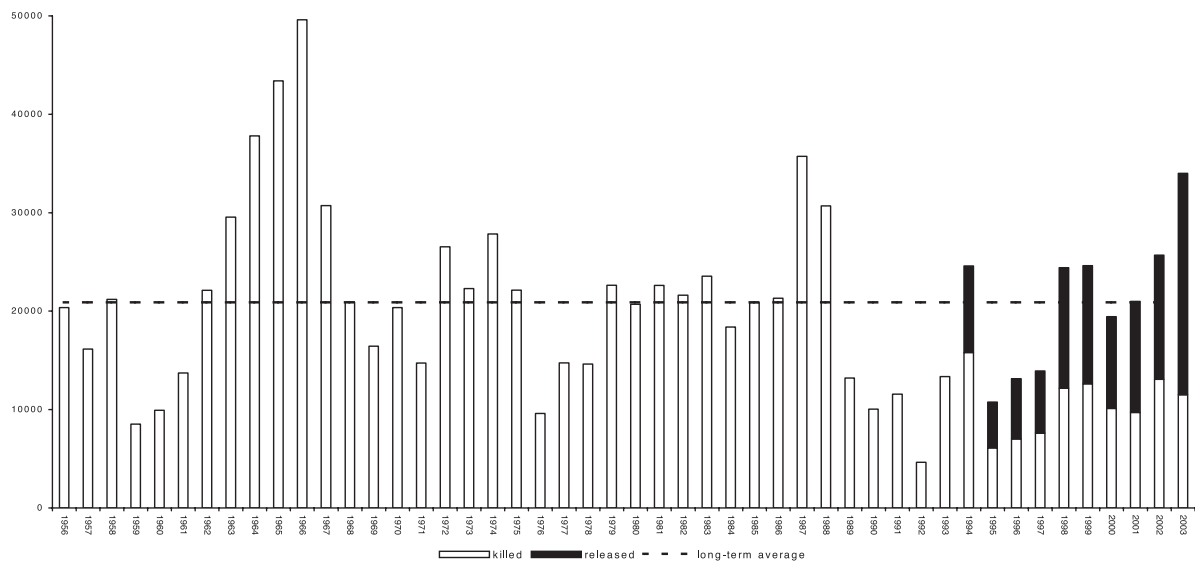
Total declared salmon rod-catch for Wales, 1956-2003
(shaded area indicates fish caught and released)



Total declared migratory trout net and fixed engine catch for Wales, 1956-2003



Total declared migratory trout rod-catch for Wales, 1956-2003
(shaded area indicates fish caught and released)

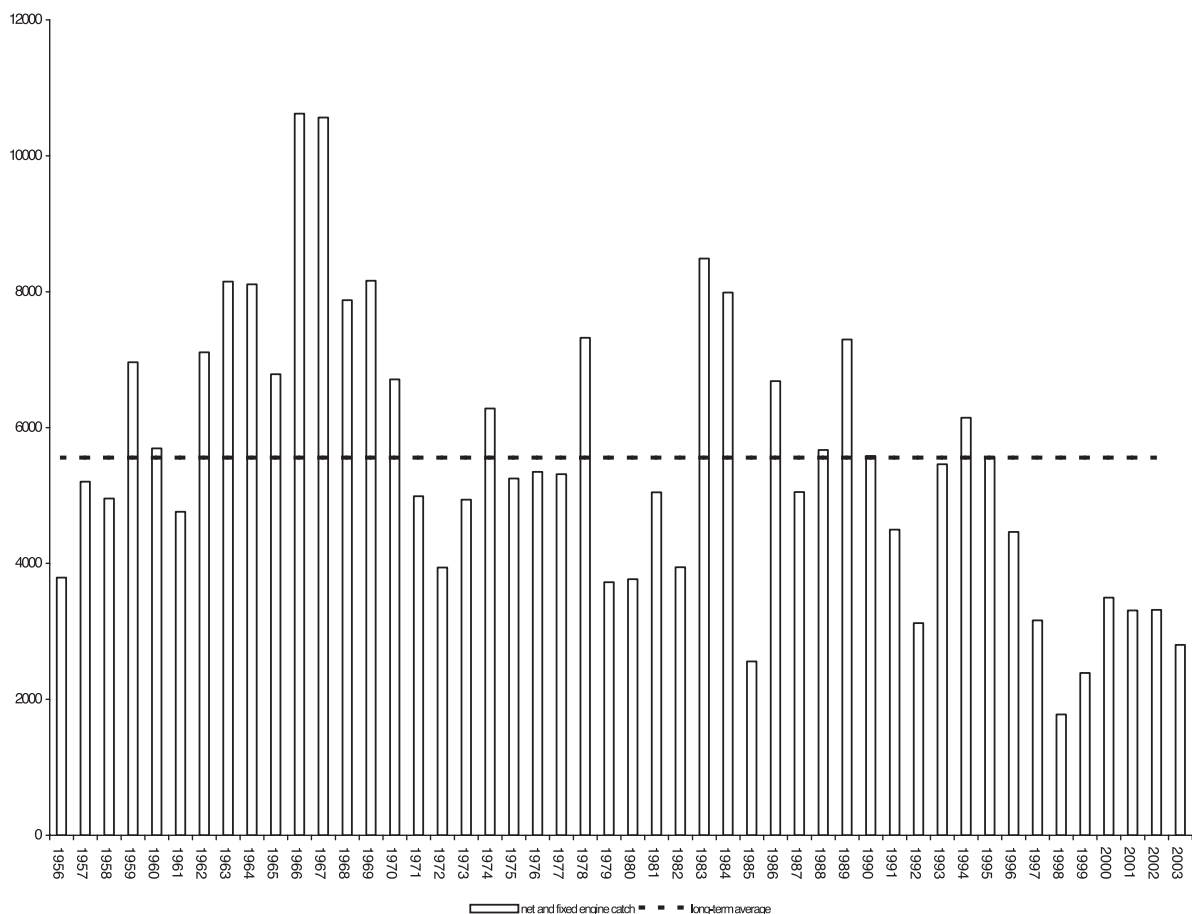


North West Region

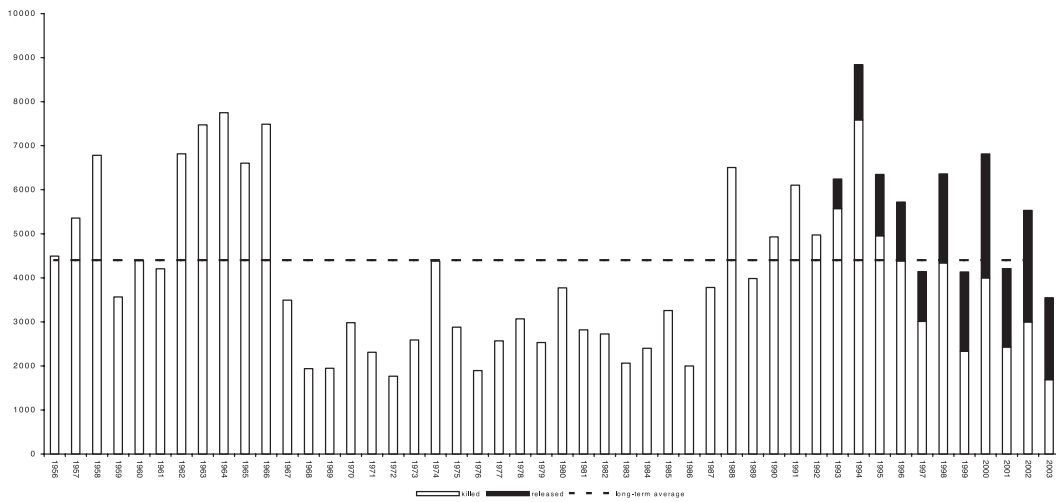
Summary of effort and rod and net catches in North West Region in 2003, including percentage change compared with 2002, and with the five-year mean (1998-2002)

North West Region			5-yr. Mean (1998-2002)	% change (+/-)	
	2003	2002		2003 on 2002	2003 on 5yr. mean
RODS					
Migratory licences issued	5,916	6,561	6,635	-10%	- 11%
Days declared fished	37,449	43,278	46,154	-13%	- 19%
Salmon rod catch	3,547	5,532	5,409	-36%	- 34%
Salmon released (% released)	1,859 (52%)	2,534 (46%)	2,189 (40%)	-	-
Sea trout rod catch	7,893	8,245	7,900	- 4%	0%
Sea trout released (% released)	5,145 (65%)	4,563 (55%)	4,625 (59%)	-	-
NETS					
Net licences issued	142	138	157	+ 3%	- 10%
Salmon net catch	2,801	3,318	2,858	- 16%	- 2%
Sea trout net catch	1,225	851	1,495	+44%	- 18%

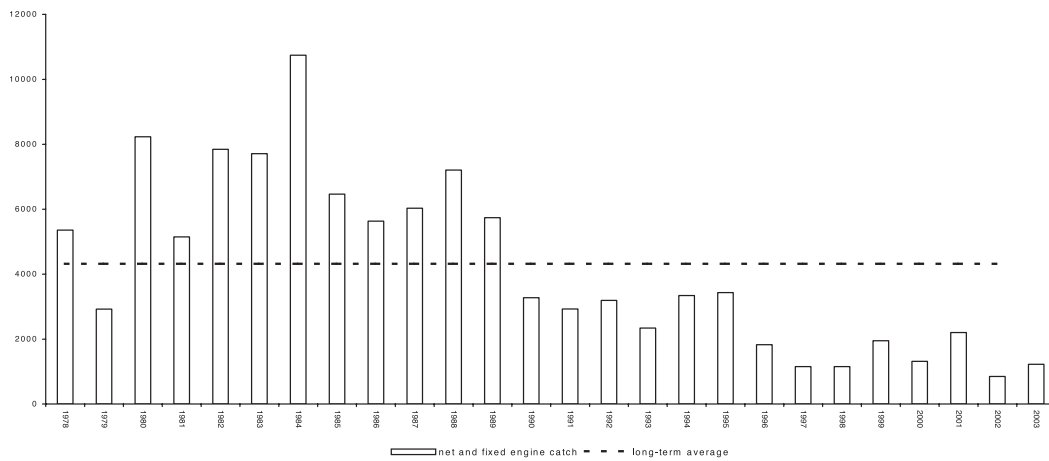
Total declared salmon net and fixed engine catch for North West Region, 1956 – 2003



Total declared salmon rod-catch for North West Region, 1956-2003
(shaded area indicates fish caught and released)



Total declared migratory trout net and fixed engine catch for North West Region, 1978-2003



Total declared migratory trout rod-catch for North West Region, 1978-2003
(shaded area indicates fish caught and released)

