



www.environment-agency.gov.uk

Fisheries Statistics 2002

Salmonid and freshwater fisheries statistics
for England and Wales, 2002



**ENVIRONMENT
AGENCY**

Publications

Salmonid and Freshwater Fisheries Statistics for England and Wales

1. Fisheries Statistics 1995
2. Fisheries Statistics 1996
3. Fisheries Statistics 1997
4. Fisheries Statistics 1998
5. Fisheries Statistics 1999
6. Fisheries Statistics 2000
7. Fisheries Statistics 2001

Annual Assessment of Salmon Stocks and Fisheries in England and Wales

(Produced jointly by the Environment Agency and CEFAS)

1. 1998
2. 1999
3. 2000
4. 2001
5. 2002

Leaflets

1. Catch and Release - *a guide to careful salmon handling*
2. Buyer Beware - *Handling and purchase of wild salmon and sea trout*
3. Salmon – *your part in their future*

Contact details

National Fisheries Technical Team

Salmonid Fisheries Science Group

Environment Agency

Ty Cambria House

Newport Road

Cardiff

CF24 0TP

Tel 02920 770088

Fax 02920 798555

Email rob.evans@Environment-Agency.gov.uk

ISBN 1 844321 92 4





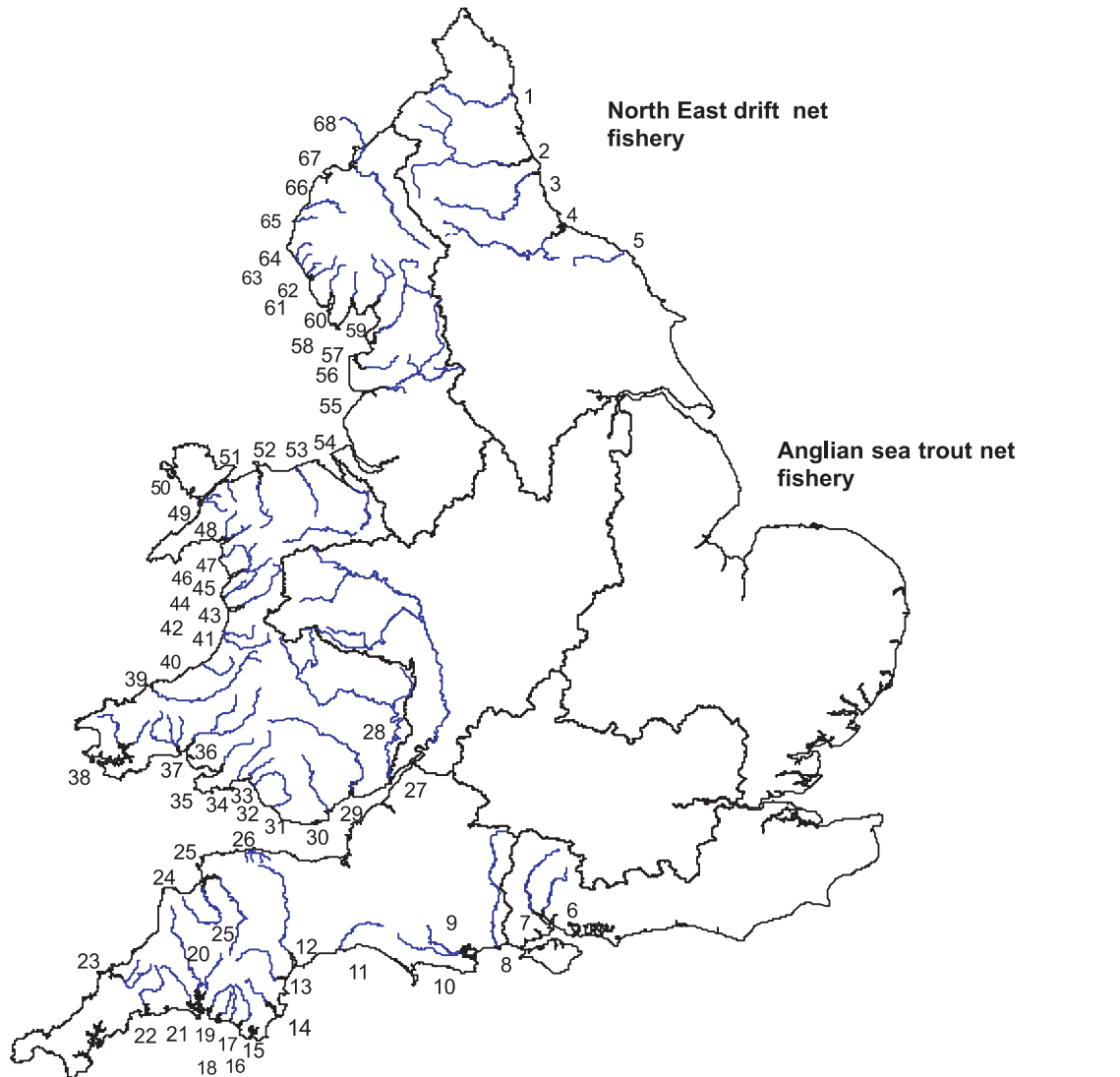
ENVIRONMENT AGENCY

SALMONID AND FRESHWATER FISHERIES STATISTICS FOR ENGLAND AND WALES, 2002

(Declared catches of salmon and migratory trout by rods, nets and other instruments)

This report, prepared by the Environment Agency's **National Fisheries Technical Team** (Salmonid Fisheries Science Group), is one of a long-term series. It contributes to our objective of communicating our fisheries monitoring programme.

Major salmon and sea trout rivers and fisheries in England and Wales



Key

North East

- 1 Coquet
- 2 Tyne
- 3 Wear
- 4 Tees
- 5 Esk (Yorks.)

Southern

- 6 Itchen
- 7 Test

South West

- 8 Avon (Hants.)
- 9 Piddle
- 10 Frome
- 11 Axe
- 12 Exe
- 13 Teign
- 14 Dart
- 15 Avon (Devon)
- 16 Erme
- 17 Yealm
- 18 Plym
- 19 Tavy
- 20 Tamar
- 21 Lynher

Midlands

- 22 Fowey
- 23 Camel
- 24 Torridge
- 25 Taw
- 26 Lyn
- 27 Severn

Wales

- 28 Wye
- 29 Usk

- 30 Taff
- 31 Ogmere
- 32 Afan
- 33 Neath
- 34 Tawe
- 35 Loughor
- 36 Tywi
- 37 Taf
- 38 Cleddau
- 39 Teifi
- 40 Aeron
- 41 Ystwyth
- 42 Rheidol
- 43 Dyfi

- 44 Dysynni
- 45 Mawddach
- 46 Artro
- 47 Dwyrdd
- 48 Glaslyn
- 49 Gwyrfai
- 50 Seiont
- 51 Ogwen
- 52 Conwy
- 53 Clwyd
- 54 Dee

North West

- 55 Ribble
- 56 Wyre
- 57 Lune
- 58 Kent
- 59 Leven
- 60 Crake
- 61 Duddon
- 62 Esk (C)
- 63 Irt
- 64 Ehen
- 65 Derwent
- 66 Ellen
- 67 Eden
- 68 Esk (B)

The principal aim of the Environment Agency in respect of fisheries is to maintain, improve and develop fish stocks, the basic fisheries resource, in order to optimise the social and economic benefits from their sustainable exploitation.

To achieve this aim, we have set the following objectives:

- conserve and develop sustainable fisheries for salmon, trout, freshwater fish, eels and, where appropriate, sea fish;
- regulate fisheries through the enforcement of a consistent series of licences, orders, by-laws and consents;
- monitor the performance of fisheries in our rivers and inland waters, estuaries and, where appropriate coastal waters, including the status of fish stocks; their habitat; fishing effort and catches;
- communicate with our customers and understand their needs;
- produce clear strategies for the long-term management of each of the main types of fishery, i.e. for salmon, trout, coarse fish and eels;
- secure a fair and robust funding base for necessary fisheries work incorporating full recovery of costs from those who damage the environment or whose activities directly cause fisheries work to be undertaken;
- develop our scientific and technical understanding of fisheries including the application of best practice to fisheries management and investment in our staff's skills and professional development. Focused R&D will aid in achieving all of our objectives.

Contents

- 1 Introduction
- 2 The Environment Agency and its Regions
- 3 Rod licence catch returns
- 4 National overview and summary of main findings, 2002
- 5 Regional summaries
- 6 Data tables 1 to 23
- 7 Figures 1 to 6
- 8 References
- 9 Glossary
- 10 Appendix 1 -
Summary of national by-laws to protect early-running salmon
- 11 Appendix 2 -
National catch return by-laws

1 Introduction

This is the Environment Agency's eighth collation of salmon and migratory trout catch statistics for England and Wales. From 1989 to 1994, these statistics were published by the National Rivers Authority (NRA). The Ministry of Agriculture, Fisheries and Food, Directorate of Fisheries Research also included them in its Data Report series between 1983 and 1988.

This report is a reference document of declared salmonid catches in England and Wales. Data from a number of Agency-operated electronic fish-counters and traps are also included. Salmon stock assessment data (including provisional catches and run estimates) are published in an annual assessment for the

International Council for the Exploration of the Seas (ICES). The sixth report in this series was published jointly by the Environment Agency and the Centre for Environment, Fisheries & Aquaculture Science (CEFAS) in April 2003.

The catch data recorded here represent declared catches only. This document is therefore not an entirely accurate record of the total numbers of fish landed. Furthermore, the relationship between catch and stock size is not always straightforward, regardless of the accuracy of the catch data. Great care must be taken therefore in interpreting these data. In case of doubt, please refer to the Salmonid Fisheries Science Group (SFSG).

2 The Environment Agency and its Regions

The Environment Agency is a non-departmental public body established by the Environment Act 1995. We have taken over the functions of our predecessors, the National Rivers Authority, Her Majesty's Inspectorate of Pollution, Waste Regulation Authorities and some parts of the

Department of the Environment. The Agency came into effect on 1 April 1996.

There are eight Agency Regions: North East, Anglian, Thames, Southern, South West, Midlands, Environment Agency Wales and North West.

3 Rod Licence Catch Returns

In 2002, 29,407 migratory salmonid rod licences were issued, compared with 24,350 in 2001. In November 2002, for the eighth consecutive year, the Agency sent a reminder to all holders of salmon and sea trout licences to declare their catch returns. The timing of the reminder coincided with the end of most rod-fishing seasons. As in 1994-2001, the effect of this action was marked compared with 1992 and 1993 returns, when no reminders were sent.

In an attempt further to improve reporting rates, the Agency now also routinely issues second reminders to anglers who fail to submit a return in response to the first reminder. These were issued in February 2003. We believe that the returns published here record approximately 90 per cent of all migratory salmonids caught in England and Wales.

4 National Overview and Summary of Main Findings, 2002

Summary of declared salmon and sea trout rod catches, 2002

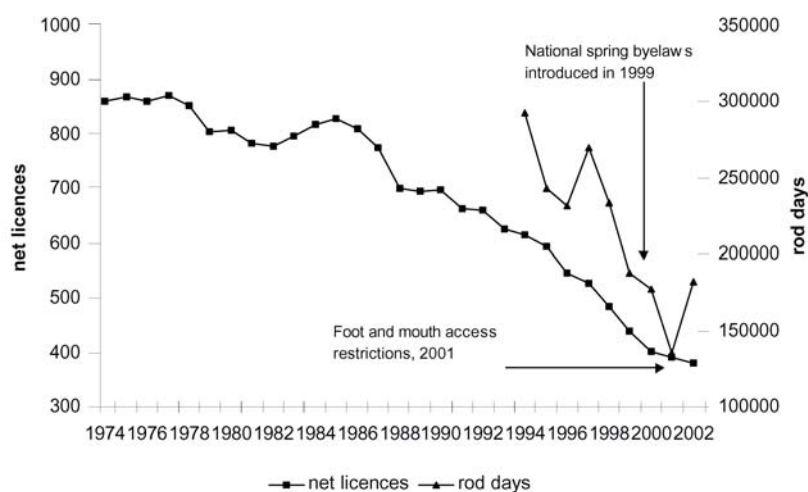
RODS	Salmon		Sea trout	
	Number	Weight (t.)	Number	Weight (t.)
Total				
Caught	15,282	60.4	49,796	46.0
Retained	7,624	28.6	24,626	28.3
Released	7,658 (50%)	31.8	25,170 (51%)	17.7

NETS	Salmon		Sea trout	
	Number	Weight (t.)	Number	Weight (t.)
Total				
Caught	38,279	133.2	37,018	75.0
Retained	38,045	132.3	37,018	75.0
Released	234*	0.9	0	0

* 202 salmon released by Avon/Stour nets and 32 by spring by-law-exempted sea trout fisheries

- The number of days declared fished by rods in 2002 increased by 36 per cent compared with 2001 (foot-and-mouth year), but decreased by nine per cent compared with the mean of the previous five years.
- The number of net licences issued in 2002 fell by three per cent compared with 2001. Since 1985, the number of net licences issued has decreased by 52 per cent (from 897 to 432).
- National by-laws aimed at safeguarding spring salmon continued to apply in 2002 (see Appendix 1 for details).
- Low flows resulted in generally poor angling conditions, particularly for salmon, from late summer until the middle of October.
- The declared salmon rod catch in 2002 (15,282) was six per cent up on the previous year and two per cent above the five-year mean (1997-2001).
- Salmon net catches in 2002 were 11 per cent down on 2001. But they increased by three per cent compared with the mean of the previous five years.
- The 2002 sea trout rod catch (49,796 fish) was the highest recorded since 1987 and 20 per cent above the five-year mean (1997-2001).
- The 2002 sea trout net catch of 37,018 fish represents a decrease of approximately 20 per cent compared with the mean of the previous five years.
- In 2002, 50 per cent of salmon and 51 per cent of sea trout were released by rods following capture. Release rates for salmon were the highest reported to date.
- By-law exempted net fisheries released a total of 32 salmon before 1 June. In addition, 202 salmon were released by the Avon and Stour drift nets after this date.

Net licences issued (1974-2000) and rod days fished (1994-2002), England and Wales

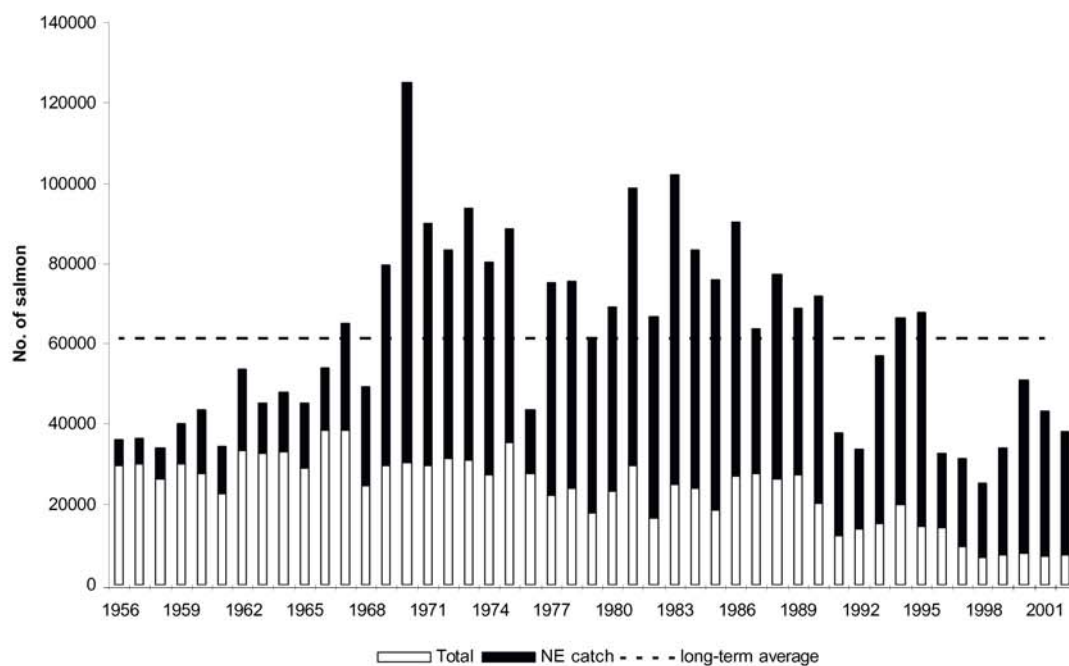


- The river with the highest declared rod catch of salmon was the Tyne (2,585), followed by the Lune (1,127), the Eden (963), the Derwent (888) and the Border Esk (812).
- The river with the highest declared rod catch of sea trout was the Teifi (4,841) followed by the Tywi/Towy (4,554), the Lune (2,549), the Wear (2,374) and the Tyne (2,371)
- Rod catches of grilse in 2002 were slightly higher than in 2001. Overall, the MSW catch was higher than in 2001 (up 10 per cent) and the mean of the previous five years (up 14 per cent).

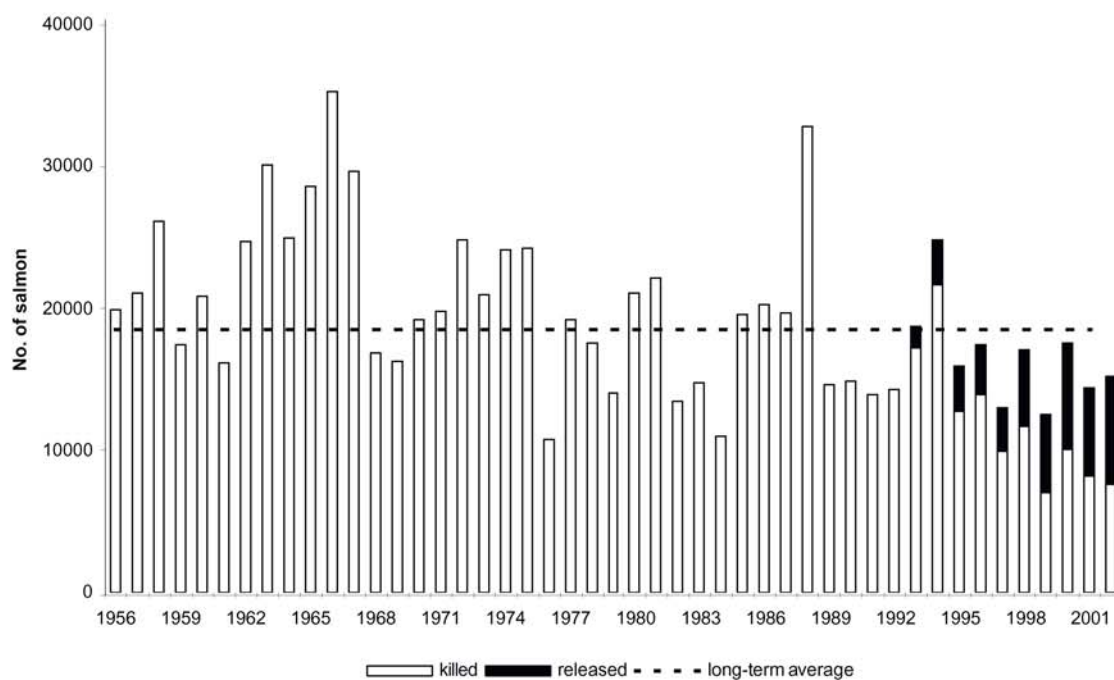
Summary of effort and rod and net catches in England and Wales in 2002, including percentage change compared with 2001, and with the five-year mean (1997-2001)

England and Wales			5-yr. Mean (1997-2001)	% change (+/-)	
	2002	2001		2002 on 2001	2002 on 5yr. mean
RODS					
Migratory licences issued	29,407	24,350	29,786	+21%	- 1%
Days declared fished	183,452	134,853	200,698	+36%	- 9%
Salmon rod catch	15,282	14,383	14,928	+6%	+2%
Salmon released (% released)	7,658 (50%)	6,143 (43%)	5,513 (37%)	-	-
Sea trout rod catch	49,796	40,392	41,393	+23%	+20%
Sea trout released (% released)	25,170 (51%)	22,331 (55%)	20,592 (49%)	-	-
NETS					
Net licences issued	432	444	506	- 3%	- 15%
Salmon net catch	38,279	43,243	37,005	- 11%	+3%
Sea trout net catch	37,018	44,926	38,632	- 18%	- 4%

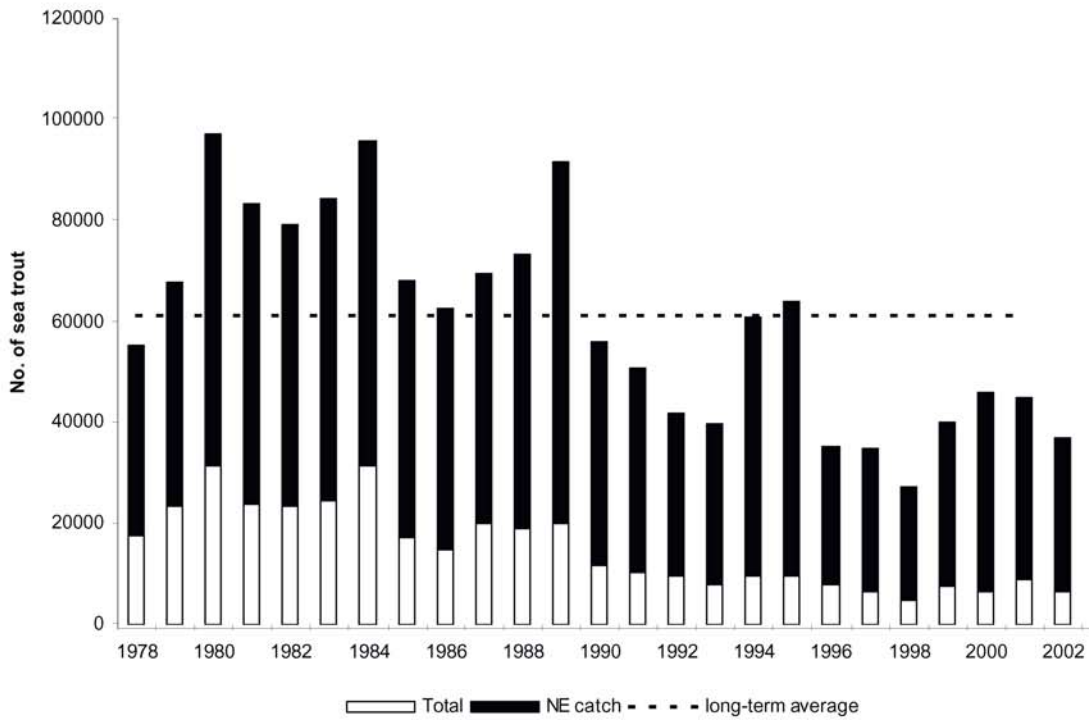
Total declared salmon net and fixed engine catch for England and Wales, 1956-2002 (shaded area indicates the catch for the North East coast fishery)



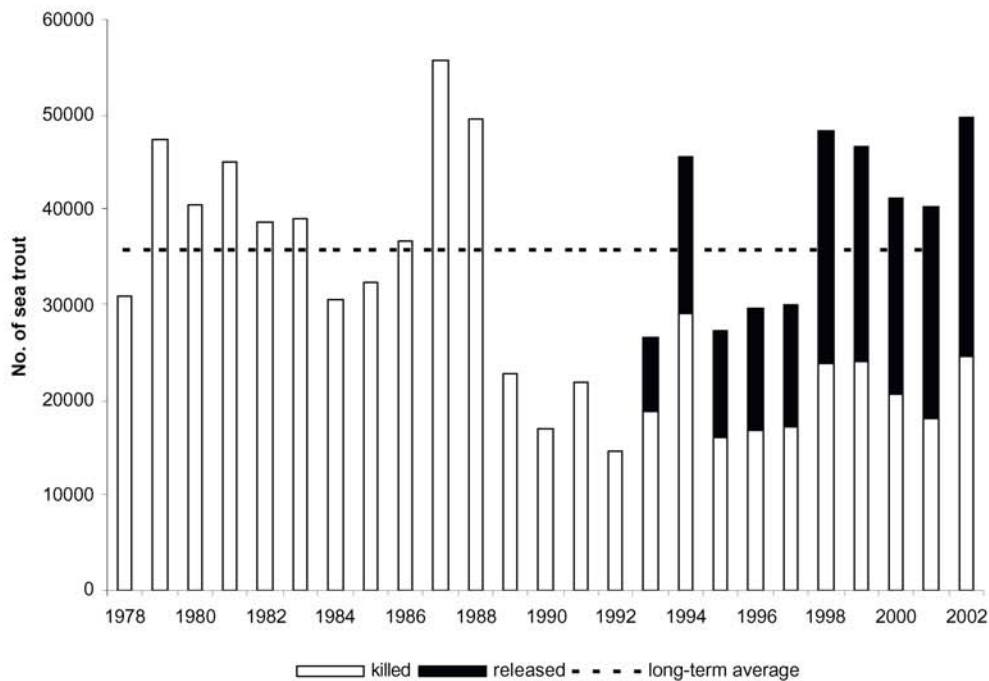
Total declared salmon rod catch for England and Wales, 1956-2002 (shaded area indicates fish caught and released)



Total declared migratory trout net and fixed engine catch for England and Wales, 1956-2002 (shaded area indicates the catch for the North East coast fishery)



Total declared migratory trout rod catch for England and Wales, 1956-2002 (shaded area indicates fish caught and released)



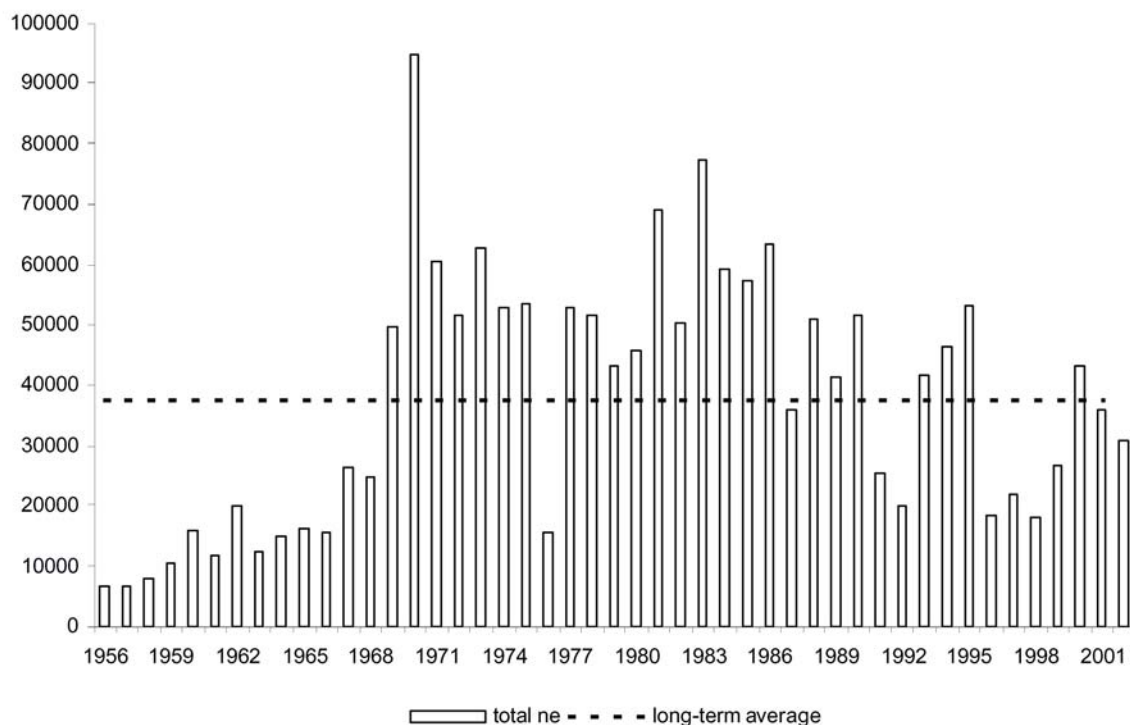
5 Regional summaries

North East Region

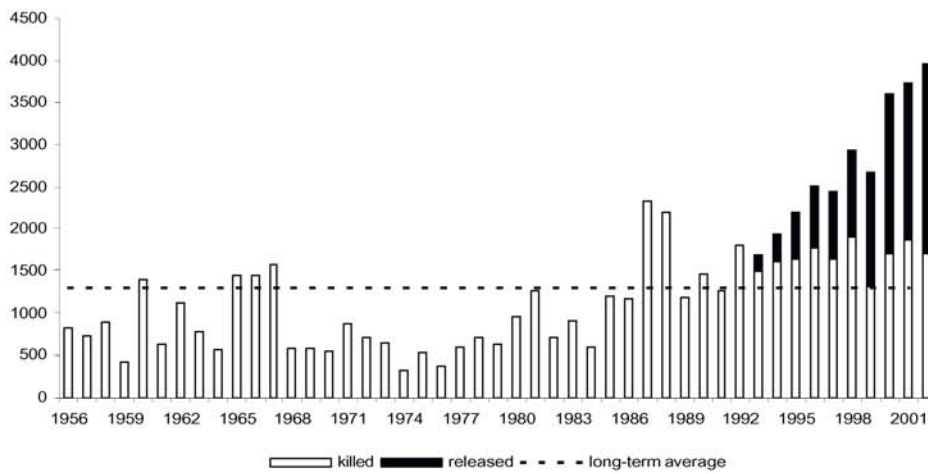
Summary of effort and rod and net catches in North East Region in 2002, including percentage change compared with 2001, and with the five-year mean (1997-2001)

North East			5-yr. Mean (1997-2001)	% change (+/-)	
	2002	2001		2002 on 2001	2002 on 5yr. mean
RODS					
Migratory licences issued	4,957	4,012	4,713	+24%	+5%
Days declared fished	34,423	27,485	34,011	+25%	+1%
Salmon rod catch	3,967	3,733	3,078	+6%	+29%
Salmon released (% released)	2,257 (57%)	1,855 (59%)	1,385 (44%)	-	-
Sea trout rod catch	5,973	40,392	4,317	+43%	+38%
Sea trout released (% released)	2,685 (45%)	1,706 (41%)	1,482 (34%)	-	-
NETS					
Net licences issued	86	84	88	+2%	- 2%
Salmon net catch	30,980	36,115	29,298	- 14%	+6%
Sea trout net catch	30,450	35,932	31,712	- 15%	- 4%

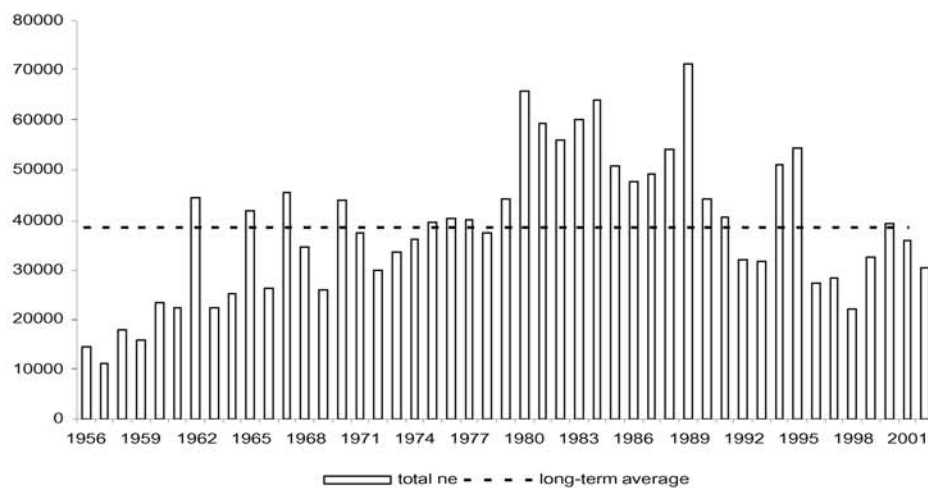
Total declared salmon net and fixed engine catch for North East Region, 1956-2002



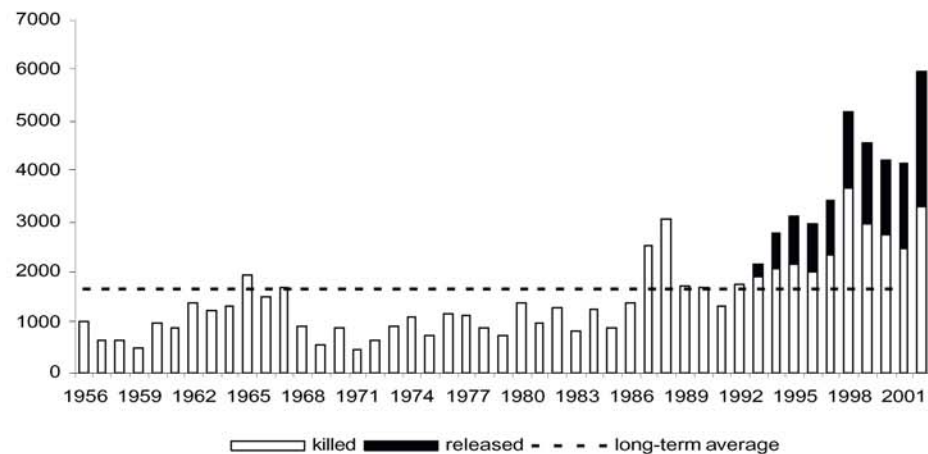
Total declared salmon rod catch for North East Region, 1956-2002
(shaded area indicates fish caught and released)



Total declared sea trout net catch for North East Region, 1956-2002



Total declared sea trout rod catch for North East Region, 1956-2002
(shaded area indicates fish caught and released)

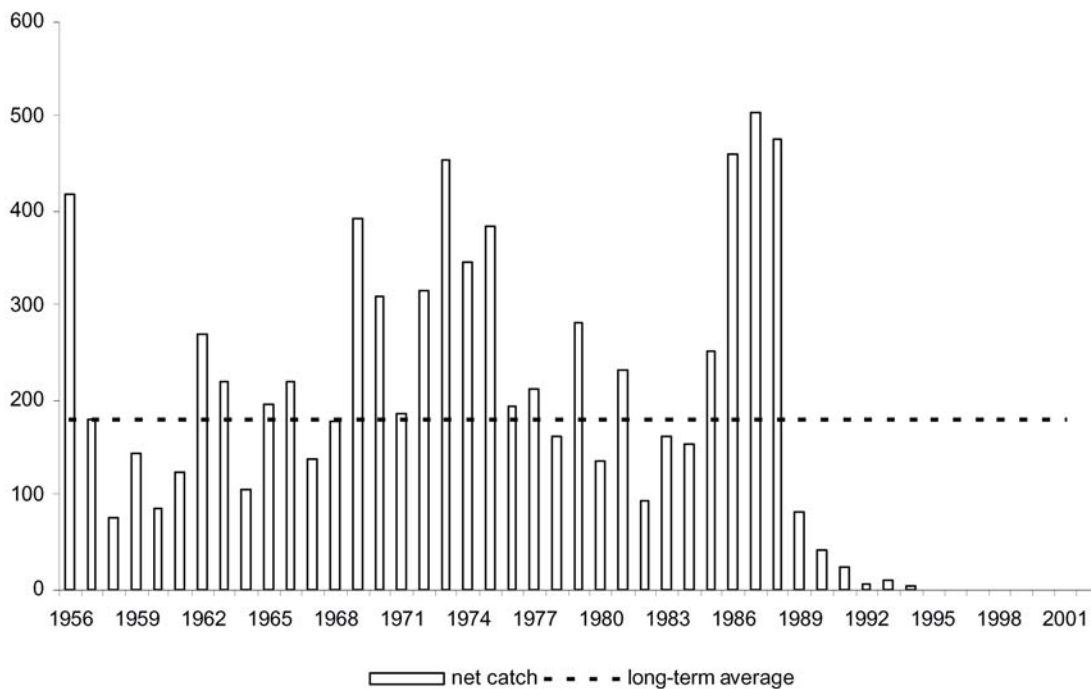


Southern Region

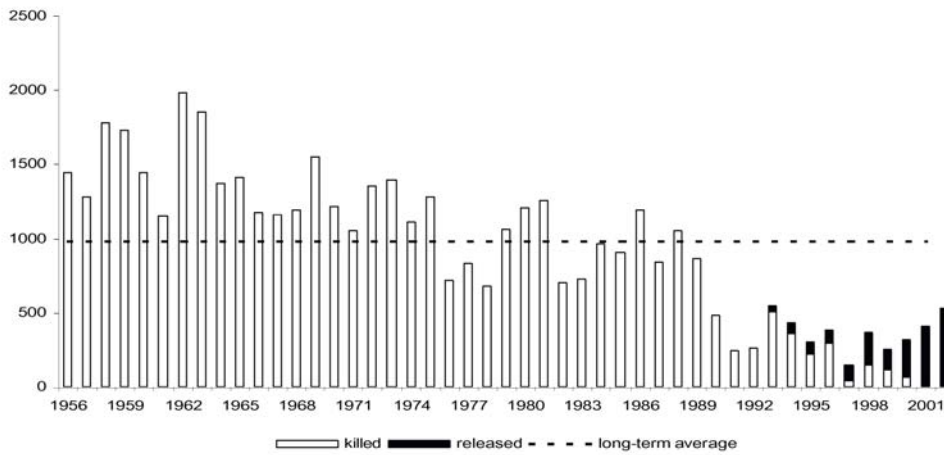
Summary of effort and rod and net catches in Southern Region in 2002, including percentage change compared with 2001, and with the five-year mean (1997-2001)

North East			5-yr. Mean (1997-2001)	% change (+/-)	
	2002	2001		2002 on 2001	2002 on 5yr. mean
RODS					
Migratory licences issued	904	766	820	+18%	+10%
Days declared fished	2,462	2,117	2,067	+16%	+19%
Salmon rod catch	531	405	298	+31%	+78%
Salmon released (% released)	528 (99%)	397 (98%)	222 (72%)	-	-
Sea trout rod catch	1,515	1,708	922	+11%	+64%
Sea trout released (% released)	931 (61%)	1,216 (71%)	586 (59%)	-	-
NETS					
Net licences issued	1	1	1	-	-
Salmon net catch	0	0	0	-	-
Sea trout net catch	24	24	13	-	+84%

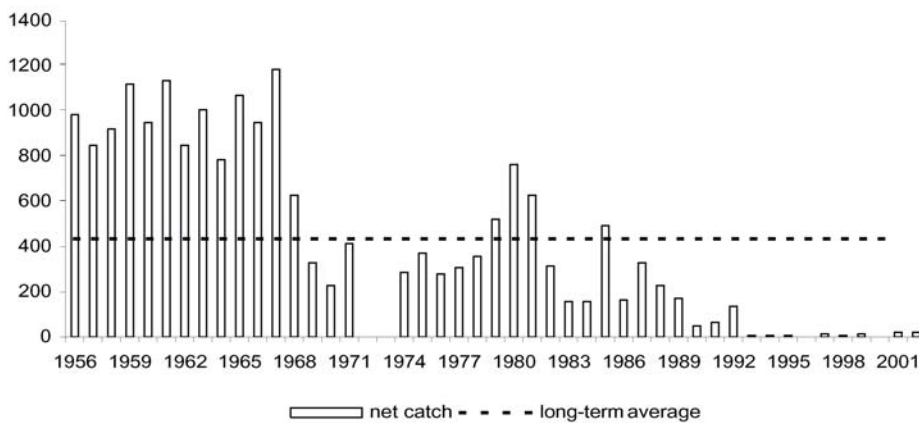
Total declared salmon net and fixed engine catch for Southern Region, 1956-2002



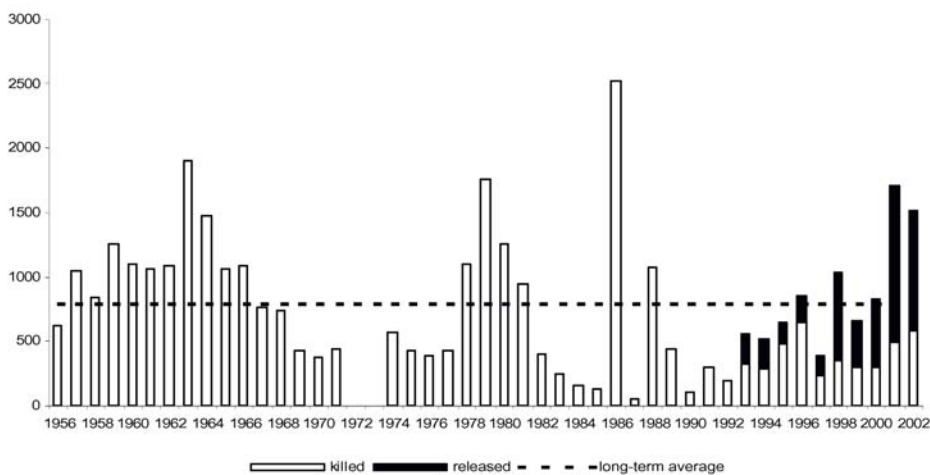
Total declared salmon rod catch for Southern Region, 1956-2002
(shaded area indicates fish caught and released)



Total declared sea trout net catch for Southern Region, 1956-2002



Total declared sea trout rod catch for Southern Region, 1956-2002
(shaded area indicates fish caught and released)

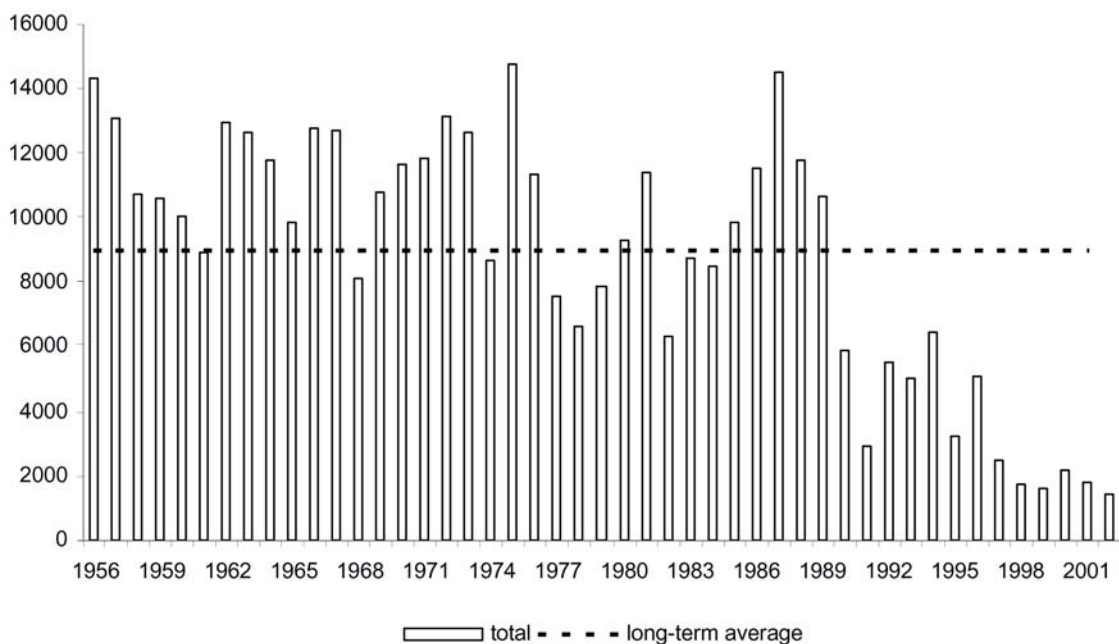


South West Region

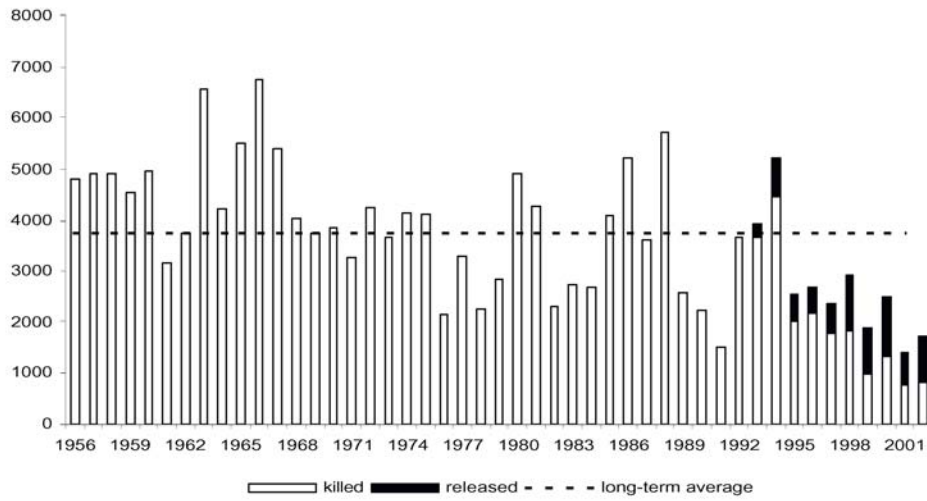
Summary of effort and rod and net catches in South West Region in 2002, including percentage change compared with 2001, and with the five-year mean (1997-2001)

North East			5-yr. Mean (1997-2001)	% change (+/-)	
	2002	2001		2002 on 2001	2002 on 5yr. mean
RODS					
Migratory licences issued	4,191	3,752	4,774	+12%	- 12%
Days declared fished	25,526	18,573	27,342	+37%	- 7%
Salmon rod catch	1,737	1,396	2,211	+24%	- 21%
Salmon released (% released)	920 (53%)	635 (45%)	870 (40%)	-	-
Sea trout rod catch	8,253	9,019	8,133	- 8%	+1%
Sea trout released (% released)	4,347 (53%)	5,151 (57%)	4,032 (49%)	-	-
NETS					
Net licences issued	70	80	84	- 13%	- 17%
Salmon net catch	1,404	1,794	1,959	- 22%	- 28%
Sea trout net catch	2,461	2,028	1,951	- 21%	+26%

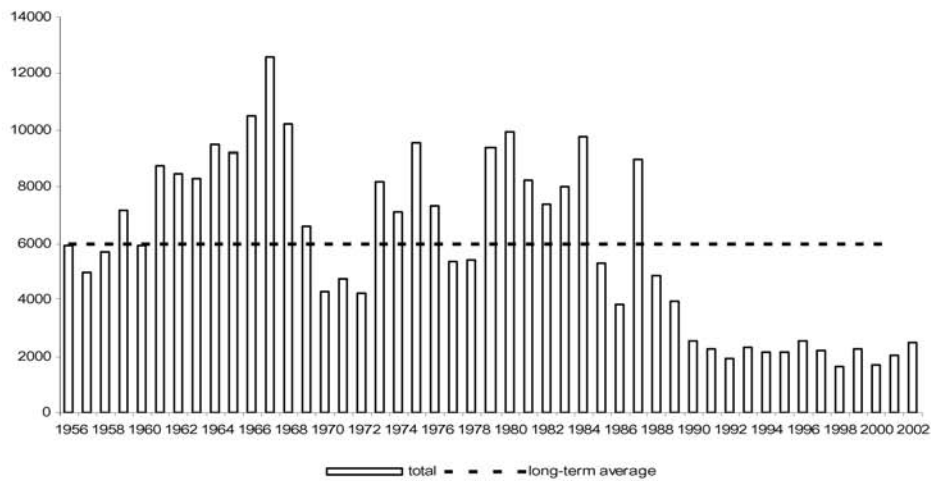
Total declared salmon net and fixed engine catch for South West Region, 1956-2002



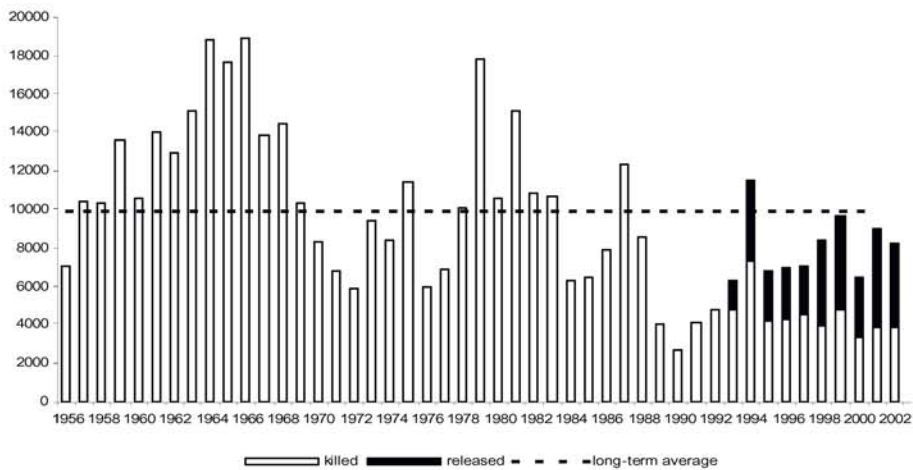
Total declared salmon rod catch for South West Region, 1956-2002
(shaded area indicates fish caught and released)



Total declared sea trout net catch for South West Region, 1956-2002



Total declared sea trout rod catch for South West Region, 1956-2002
(shaded area indicates fish caught and released)

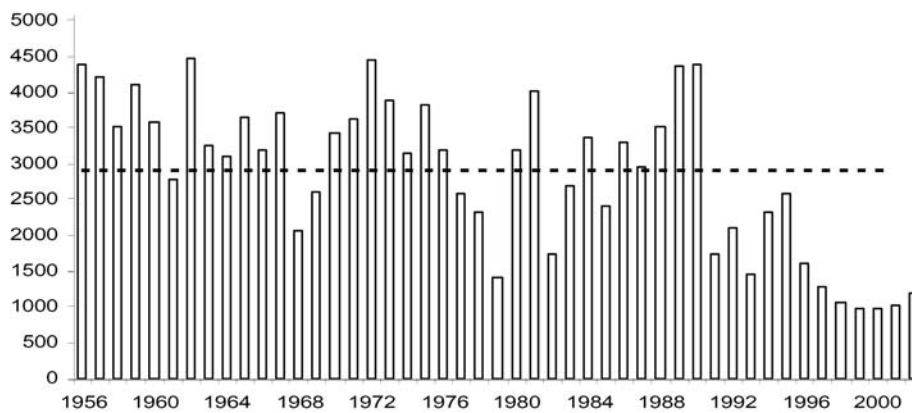


Midlands Region

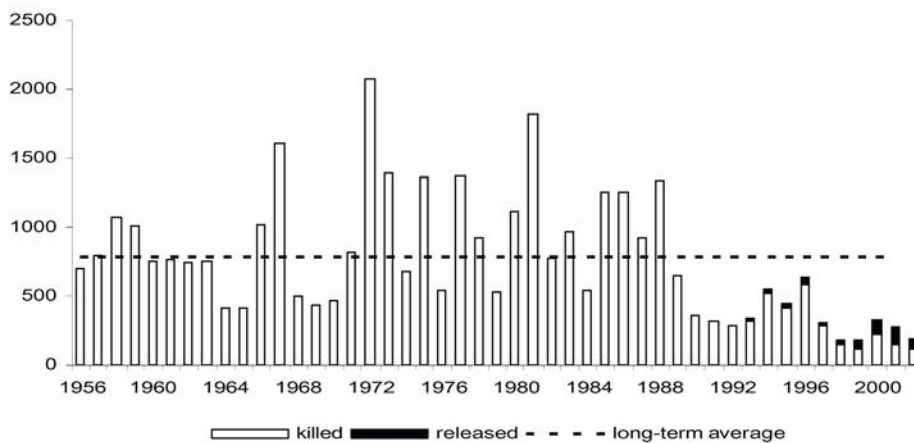
Summary of effort and rod and net catches in Midlands Region in 2002, including percentage change compared with 2001, and with the five-year mean (1997-2001)

North East			5-yr. Mean (1997-2001)	% change (+/-)	
	2002	2001		2002 on 2001	2002 on 5yr. mean
RODS					
Migratory licences issued	2,232	1,832	2,259	+22%	- 1%
Days declared fished	4,720	4,084	8,572	+16%	- 45%
Salmon rod catch	195	273	256	- 29%	- 24%
Salmon released (% released)	73 (37%)	128 (47%)	71 (28%)	-	-
Sea trout rod catch	-	-	-	-	-
Sea trout released (% released)	-	-	-	-	-
NETS					
Net licences issued	24	29	34	- 17%	- 29%
Salmon net catch	1,190	1,027	1,069	+16%	+11%
Sea trout net catch	-	-	-	-	-

Total declared salmon net and fixed engine catch for Midlands Region, 1956-2002



Total declared salmon rod catch for Midlands Region, 1956-2002 (shaded area indicates fish caught and released)

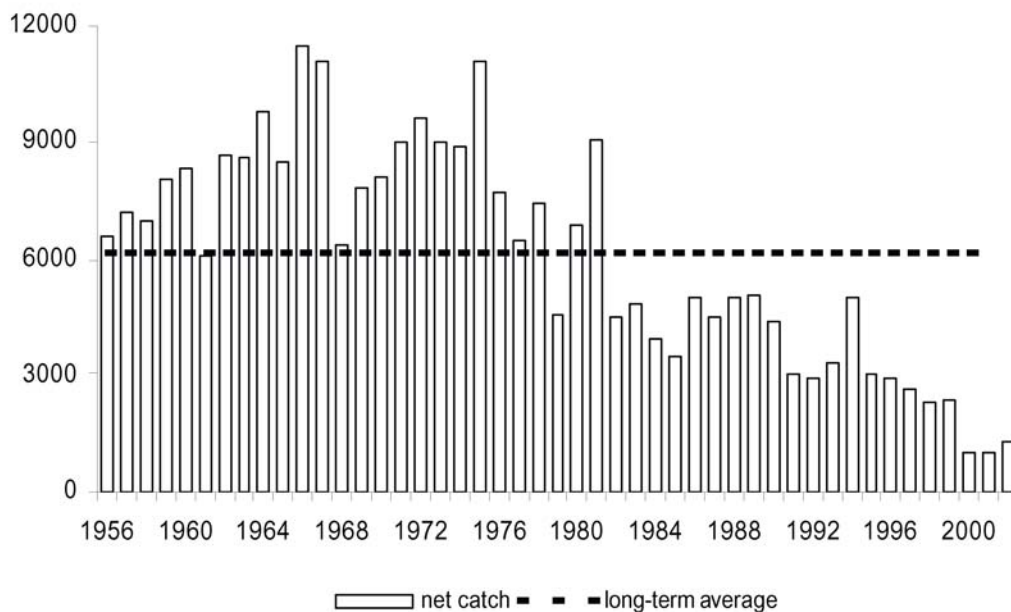


Environment Agency Wales

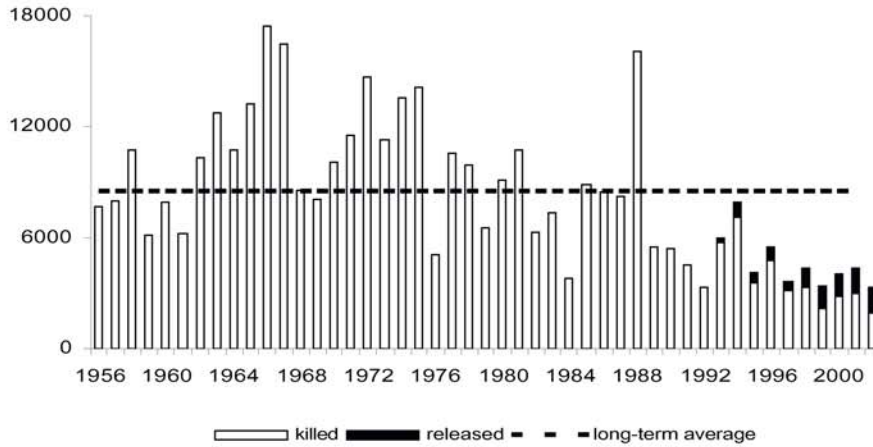
Summary of effort and rod and net catches in Wales in 2002, including percentage change compared with 2001, and with the five-year mean (1997-2001)

North East			5-yr. Mean (1997-2001)	% change (+/-)	
	2002	2001		2002 on 2001	2002 on 5yr. mean
RODS					
Migratory licences issued	7,821	6,612	8,016	+18%	- 2%
Days declared fished	73,328	59,163	76,986	+24%	- 5%
Salmon rod catch	3,312	4,351	3,943	- 24%	- 16%
Salmon released (% released)	1,346 (41%)	1,347 (31%)	1,055 (27%)	-	-
Sea trout rod catch	25,689	20,991	20,672	+22%	+24%
Sea trout released (% released)	12,618 (49%)	11,283 (54%)	10,226 (49%)	-	-
NETS					
Net licences issued	76	62	76	+23%	-
Salmon net catch	1,275	997	1,855	+28%	- 31%
Sea trout net catch	1,943	2,334	1,754	- 17%	+11%

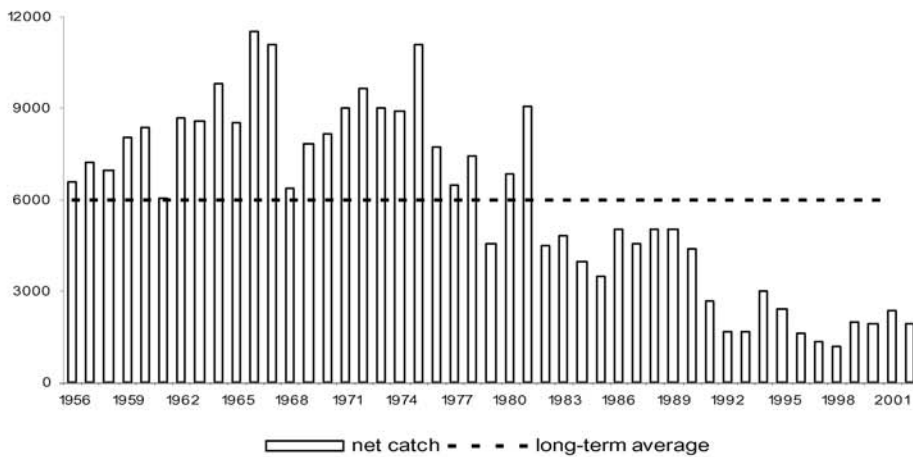
Total declared salmon net and fixed engine catch for Wales, 1956-2002



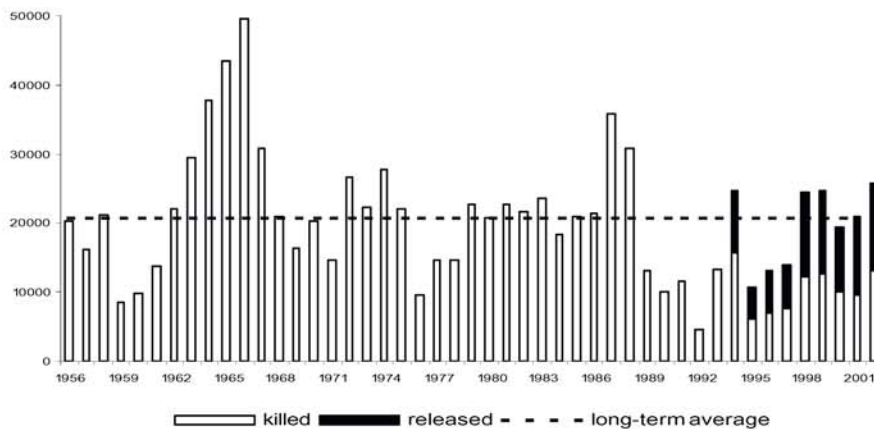
Total declared salmon rod catch for Environment Agency Wales, 1956-2002
(shaded area indicates fish caught and released)



Total declared sea trout net catch for Environment Agency Wales, 1956-2002



Total declared sea trout rod catch for Environment Agency Wales, 1956-2002
(shaded area indicates fish caught and released)

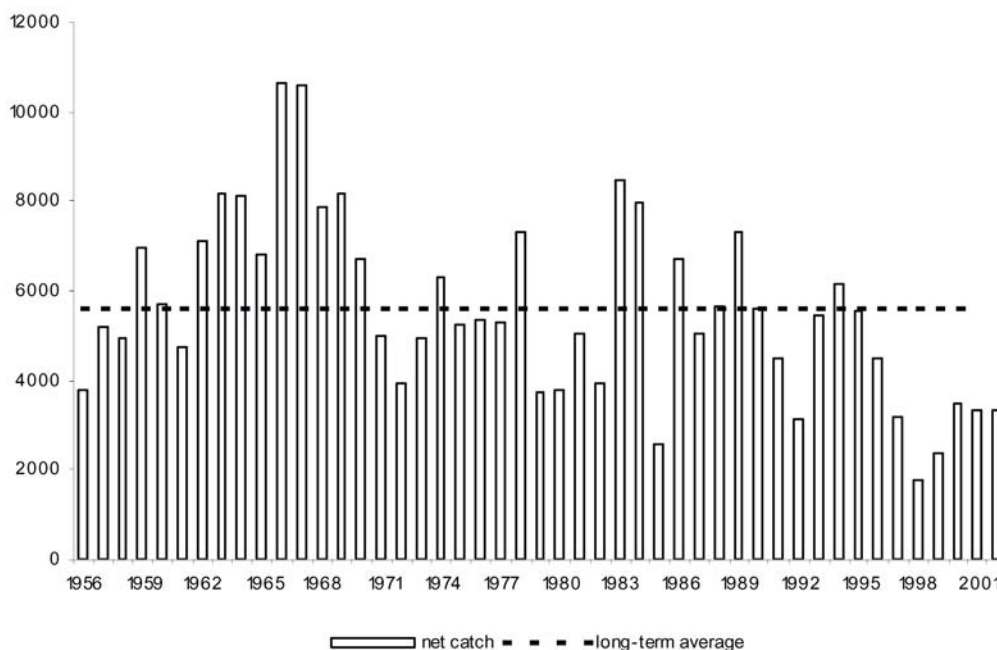


North West Region

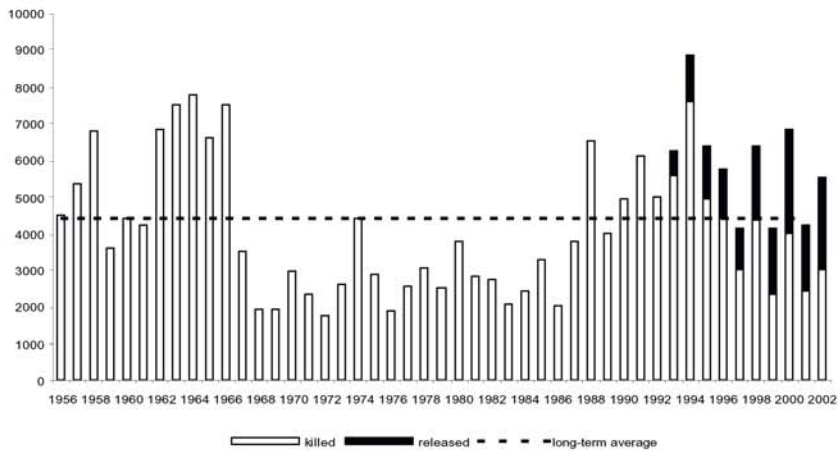
Summary of effort and rod and net catches in North West Region in 2002, including percentage change compared with 2001, and with the five-year mean (1997-2001)

North East			5-yr. Mean (1997-2001)	% change (+/-)	
	2002	2001		2002 on 2001	2002 on 5yr. mean
RODS					
Migratory licences issued	6,561	4,872	6,859	+35%	- 4%
Days declared fished	43,278	23,320	51,542	+86%	- 16%
Salmon rod catch	5,532	4,209	5,132	+31%	+8%
Salmon released (% released)	2,534 (46%)	1,779 (42%)	1,908 (37%)	-	-
Sea trout rod catch	8,245	4,463	7,302	+85%	+13%
Sea trout released (% released)	4,563 (55%)	2,949 (66%)	4,245 (58%)	-	-
NETS					
Net licences issued	138	142	173	- 3%	- 20%
Salmon net catch	3,318	3,310	2,826	-	+17%
Sea trout net catch	851	2,210	1,555	- 61%	- 45%

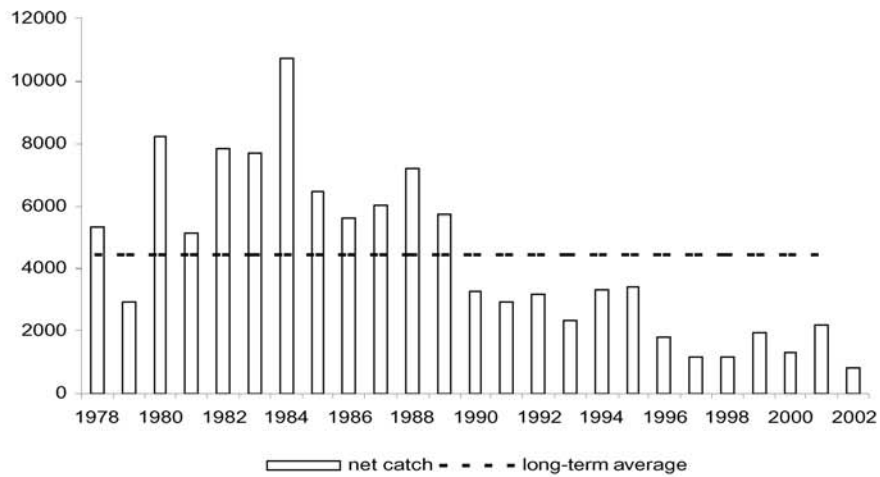
Total declared salmon net and fixed engine catch for North West Region, 1956-2002



Total declared salmon rod catch for North West Region, 1956-2002
(shaded area indicates fish caught and released)



Total declared sea trout net catch for North West Region, 1978-2002



Total declared sea trout rod catch for North West Region, 1956-2002
(shaded area indicates fish caught and released)

