

Quarterly Report

FISHERIES AND AQUACULTURE PRODUCTION AND TRADE

PERIOD ENDING DECEMBER 2010

OVERVIEW

- α Total landings from New Zealand wild fisheries in the year ended Dec 2010 increased 1.5% to 434 thousand tonnes compared to the year ended Dec 2009. Lower catches of pelagics were offset by higher catches of inshore finfish, inshore shellfish and deepwater species.
- α The total volume of exports of seafood products in the year ended Dec 2010 increased by 4.7% to 300 thousand tonnes compared to the year ended Dec 2009.
- α The total value of exports of seafood products in the year ended Dec 2010 increased by 4.9% to \$1.49 billion compared to the year ended Dec 2009.
- α The continuing strength of the Australian and Chinese economies has assisted demand for New Zealand seafood from these markets. Demand elsewhere has been depressed, especially in Europe and the US.
- α The outlook is for continuing demand growth in the emerging economies in Asia and the Australian market. Demand in other markets is expected to be restrained. This is because of the difficult adjustments being made in the US and European economies.

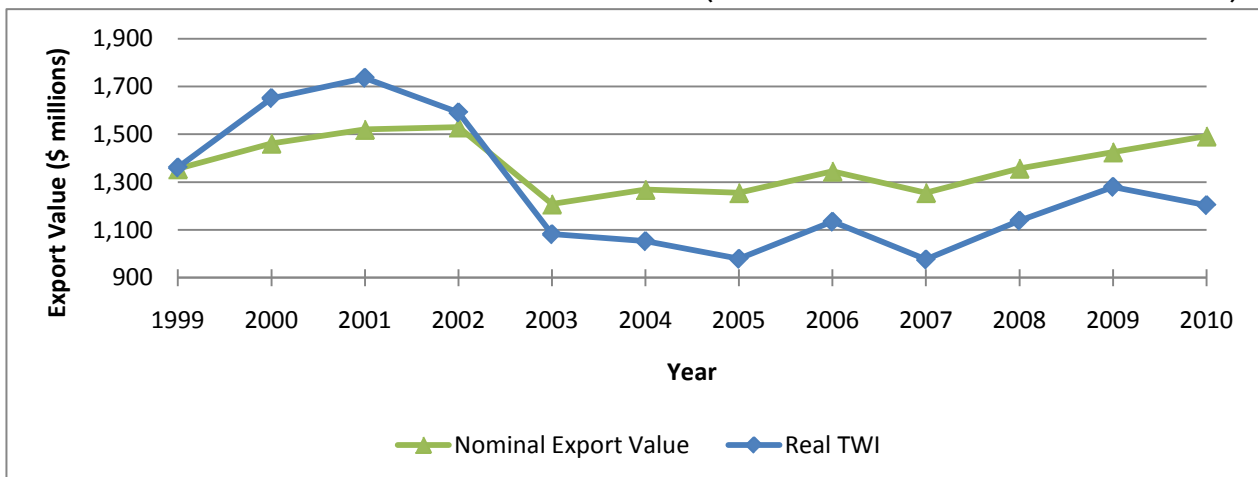
OPERATING ENVIRONMENT

The final quarter of 2010 has seen the New Zealand economy continue to struggle to gain momentum. In the new year, a spike in food and fuel prices has further restrained households' discretionary spending and resulted in low domestic demand. The housing market continues to be slow as households repay debt. The Canterbury earthquake will cause further disruption to the NZ economy. NZIER predicts that this combination of factors will see economic growth slump to 0.3% in 2011.

The outlook for the global economy is one of growing optimism. Economic growth in New Zealand's major trading partners will average 4% in 2011. The strength of the emerging economies (e.g. China) has cushioned our export sectors from the full impact of the global financial crisis. However, these emerging economies are now having to deal with inflationary pressures and are tightening fiscal and monetary policy as a result.

The current political uncertainty in the Middle East is having an impact on world fuel prices. The recent revolutions in Tunisia and Egypt and the civil war in Libya are causing international concern around the security of oil supply. If the world oil price stays high over the medium to long term, it will cause significant problems for fuel intensive industries, like the fishing industry. The recent earthquake and tsunami in Japan

FIGURE 1: ANNUAL EXPORT VALUES: NOMINAL AND REAL (GDP DEFLATOR & TRADE WEIGHTED INDEX)



may also impact on the fishing industry as Japan accounted for 8.6% (\$128M) of NZ seafood export earnings in 2010.

The Australian and Chinese economies continue to be strong relative to other export markets. This has helped the fishing industry during 2010 as these markets (including Hong Kong) accounted for just under 50% of total export earnings by the industry in 2010. These markets accounted for just over 40% of the total volume of NZ seafood exports.

The US and UK economies are still going through difficult adjustments needed to rebalance their economies. The speed at which these economies rebound will determine when demand from them recovers. The US accounted for just under 12% of total NZ seafood export earnings in 2010.

Exchange rates are an important driver of revenue and profits (in \$NZ) for the seafood sector. The NZ\$ has depreciated against the AU\$ but appreciated against the US\$ and Euro. This shows the relative strength of these economies at the moment.

The NZ\$/US\$ exchange rate is predicted to remain stable over the next six months (between US\$0.74 to US\$0.78). In 2012 and 2013, NZIER forecasts that the exchange rate will fall to around US\$0.73 and to US\$0.67 respectively. This suggests a difficult working environment over the medium to long term for seafood exporters to US markets and to markets denominated in US dollars.

NZIER forecast the exchange rate with the AU\$ to remain fairly stable through 2011 (currently at AU\$0.73), with the exchange rate fluctuating between AU\$0.77 to AU\$0.79 over following years.

Diesel prices (a major cost of catching fish and getting it to markets) began to increase from historic levels (\$1.00 a litre) from October 2009. The retail price for diesel sold in New Zealand increased by 43% from mid-October 2009 to \$1.43 a litre at the end of February 2011. This price is still substantially lower than the peak high prices in mid 2008 (\$1.91 a litre).

LANDINGS AND EXPORTS

Landings

Total wild landings for the year to Dec 2010 were 434 thousand tonnes, up 1.5% on 2009 but down 2.5% on 2008. Table 1 shows the species grouping contributions to landings.

TABLE 1: ANNUAL LANDINGS VOLUMES

	Dec 2010 Year (tonnes)	Change from Dec 2009 Year (%)
Aquaculture	No data	No data
Deepwater	195,412	8.06%
Inshore Finfish	47,920	2.66%
Inshore Shellfish	3,980	13.74%
Pelagics	124,186	-7.03%
Total Landings	434,338	1.51%

Exports

Export volumes were up by 4.7% in the year ending Dec 2010 from the year ending Dec 2009 and the value of exports increased by 4.9% over the same period. The increase in export value was caused by a significant increase in the export value of the inshore shellfish species (up 25.7%) from the year ending Dec 2009. This rise in the value of inshore shellfish species has been driven by an increase of 24.2% in export earnings for rock lobster and an increase of 30.8% in export earnings for paua.

There were also modest increases in the export value of pelagic species (up 4.8%) and inshore finfish species (up 3.0%). There were slight drops in the export value of aquaculture species (down 1.7%) and deepwater species (down 2.9%).

TABLE 2: ANNUAL EXPORT VOLUMES AND VALUES

	Dec 2010 Year (tonnes)	Change from Dec 2009 Year (%)	Dec 2010 Year (millions)	Change from Dec 2009 Year (%)
Aquaculture	43,391	5.79%	\$274.6	-1.72%
Deepwater	82,828	8.74%	\$344.5	-2.85%
Inshore Finfish	17,236	13.46%	\$113.9	3.00%
Inshore Shellfish	3,958	18.81%	\$291.9	25.73%
Pelagics	99,257	0.14%	\$208.1	4.75%
Total Exports	299,984	4.67%	\$1,491.8	4.85%

DEEPWATER

Major species for export in this group include (in order of export value) hoki, orange roughy, ling, southern blue whiting, oreo dory, hake and scampi.

Key variations in export value between the year ending Dec 2010 and the year ending Dec 2009 are:

- α **Hoki** up 13.3%
- α **Oreo dory** up 0.7%
- α **Ling** up 0.6%
- α **Orange roughy** down 4.6%
- α **Scampi** down 15.4%
- α **Southern blue whiting** down 25.8%
- α **Hake** down 46.1%

The total export value of hoki, orange roughy, ling, southern blue whiting, hake, oreo dory and scampi was \$344.5M for the year ending Dec 2010.

Hoki is the most important deepwater export species earning \$172.7M in export revenue during the year ending Dec 2010. This is up from \$152.5M for the year ending Dec 2009. This increase has been driven by an increase in the volume of hoki being exported. This volume increase is a result of the recent TAC/TACC increases for hoki.

Australian markets accounted for 29.0% of hoki export earnings with China (19.9%), Germany (17.3%) and France (12.1%) being the other major markets. The export revenue for the year to Dec 2010 is down for China and Australia and up for Germany and France from the year to Dec 2009.

Exports earnings for the year to Dec 2010 for hake were down \$16.5M. The volume of hake exported dropped but the value per kg dropped from \$7.50/kg in 2009 to \$4.75/kg in 2010. This was driven by demand from Spain falling (down \$11.0M from 2009).

Exports earnings for southern blue whiting were down

\$9.0M. This was caused by export volume and value per kg falling. This resulted in export earnings from China dropping by \$11.6M but this was offset slightly by small gains in other markets.

Exports earnings for scampi were down \$2.9M. The volume of scampi exported increase by 20 tonnes but this was offset by the value per kg dropped from \$33.68/kg in 2009 to \$27.51/kg in 2010.

Exports earnings for orange roughy were down \$2.3M. The volume of orange roughy exported decreased by 935 tonnes but this was offset by the value per kg increased from \$12.47/kg in 2009 to \$15.42/kg in 2010. This is volume decrease is a result of the recent TAC/TACC cuts made to several orange roughy stocks.

Export earnings for ling (up \$0.25M) and oreo dory (up \$0.13M) improved between 2009 and 2010. The volume of ling exported dropped by 730 tonnes but this was offset by the value per kg increased from \$6.41/kg in 2009 to \$7.26/kg in 2010. The volume of oreo dory exported dropped by 545 tonnes but this was offset by the value per kg increased from \$3.70/kg in 2009 to \$4.15/kg in 2010.

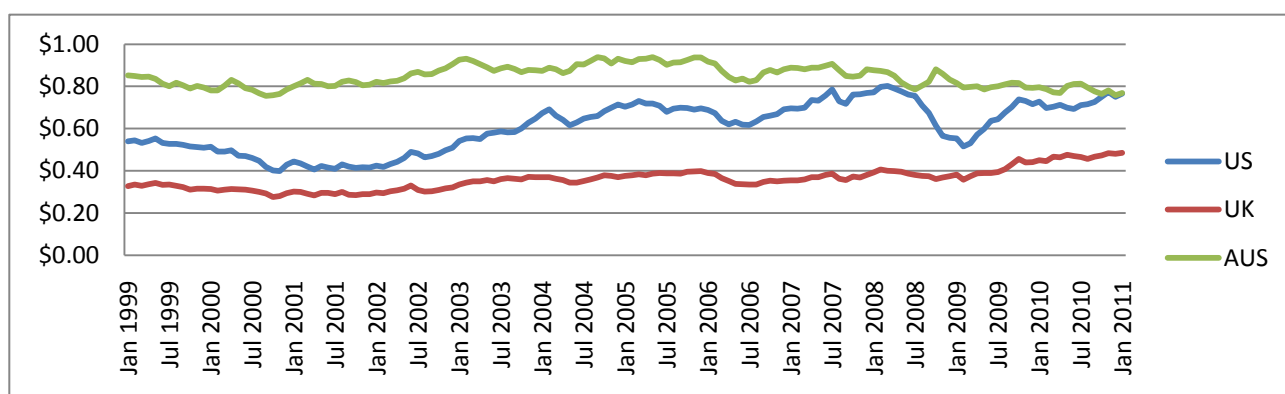
The increase in export earnings from hoki help cushion the impact of the reduced export earnings from hake, southern blue whiting, scampi and orange roughy. However, this could not stop the overall export value of the deepwater species from falling (down 2.9%) from the Dec 2009 year.

PELAGICS

Pelagic species have been treated separately in this report particularly as these species are more susceptible to high degrees of variation in catch from year to year. The main pelagic species by value are squid, jack mackerel, the tunas, barracouta and blue mackerel.

Key variations in export value between the year ending Dec 2010 and the year ending Dec 2009 are:

FIGURE 2: QUARTERLY EXCHANGE RATE VALUES



- α **Squid** up 16.1%
- α **Tunas** up 6.9%
- α **Blue mackerel** up 3.8%
- α **Jack mackerel** down 7.0%
- α **Barracouta** down 8.5%

The total export value for this group for the year ending Dec 2010 was \$208.1 million representing an increase of 4.8% from the year ending Dec 2009.

Products from the pelagic species are exported to over 100 countries, with the key markets (by value) being China (17.4%), Japan (10.1%), Australia (8.7%), Korea (8.1%) and Spain (4.1%).

Squid was the highest export earner making \$87.4m in export revenue in the year ending Dec 2010. China accounted for 24.4% of this value, with Korea (18.7%), Australia (15.9%), US (14.9%) and Greece (9.8%) being the other major markets. Squid export earnings were up \$12.1M from the year ending Dec 2009. Squid export earnings increased in the US (up \$9.5M), China (up \$5.5M), Korea (up \$4.9M) and Australia (up \$4.6M) between 2009 and 2010. However, export earnings for Greece decreased by just over \$4.6M during the same period.

Mackerels (blue and jack) together made \$55.2M in the year ending Dec 2010, down \$2.8M on the year ending Dec 2009. Export earnings from blue mackerel increased by 3.8% (up \$0.4M) while export earnings for jack mackerel dropped 7.0% (down \$3.2M) over the same period. Tunas contributed \$37.9M in export value in the year ending Dec 2010 made up from skipjack (39.6%), bluefin (30.9%), albacore (16.9%) and big eye (6.0%). Over the same period, barracouta made \$25.2M.

INSHORE FINFISH

Major species for export by value in this group include (in order of export value) snapper, small sharks, bluenose, flatfish, red cod, groper and john dory.

Export value for the main inshore finfish species in the year ending Dec 2010 was \$113.9M. This is up 3.0% from the year ending Dec 2009.

Snapper is the most important export in this group worth \$35.1M in the year ending Dec 2010, largely as chilled gutted whole fish. Australia is the key market taking 67.0% of exports. Other important markets are US (12.5%) and Italy (7.3%). Both volumes and prices in the Australian market continue to be stable.

Traditional markets in Japan and Korea provided only

6.3% of the total export revenue in the year ending Dec 2010.

Bluenose is almost exclusively exported to Australia and US (75.9% and 23.8% respectively) – worth \$13.4M in the year ending Dec 2010. The Australian market has remained firm and prices continue to rebound in the US from the 2009 low.

These inshore fish are also popular in the domestic market, which takes about a third of the snapper catch. The tarakihi catch is almost the same volume as snapper but very little is exported – around 5%. This is a key inshore finfish in the local market.

Flatfish includes a number of species managed as a group under the QMS, including soles and flounder. Export value for the year ending Dec 2010 for this group was \$10.9M (average for last 5 years was \$11.5M).

School shark was the most important shark species in terms of export value at \$9.7M in the year ending Dec 2010. Total export value of all the shark species during this period was \$26.7 million.

Red cod earned around \$6.4M in the year to Dec 2010. John dory and groper earned around \$5M each in exports for the year ending Dec 2010 and trevally about \$3.2M.

INSHORE SHELLFISH

Rock lobster is the highest value seafood export, grossing over \$229M in the year ending Dec 2010. This was up 24.2% from the year ending Dec 2009. Most of this value is from live exports into Hong Kong (78.1%), with China (17.0%) and Japan (3.0%) the other significant markets. The increase in the amount of rock lobster being exported directly to China has continued from the last quarter. The amount of rock lobster export to China in the year to Sept 2010 was 8.8% of the total export value for rock lobster. In the year to Dec 2010 this has increased to 17.0%. This increase is due to the recent free trade agreement with China allowing rock lobster to be exported directly rather than going through Hong Kong on its way to China.

The value of rock lobster in the Hong Kong market had been increasing steadily over the first 9 months of 2010. However, the price has fallen over the last quarter from \$102.75/kg to \$69.42/kg. Returns from this species have historically been highly dependent on the Hong Kong market. The increase in the volume of rock lobster being exported directly to China is starting to change this dynamic.

Paua (abalone) exports brought in \$62.7M in the year ending Dec 2010 – up 30.8% from the year ending Dec 2009. This is spread across Hong Kong (50.2%), Singapore (38.7%) and Australia (5.0%). Values have been steady across markets over the past four years averaging \$71/kg until the second half of 2009 when prices dropped to \$47/kg. Values have increased in Australia but the value in the Hong Kong and Singapore markets has begun to rebound in the last quarter.

Scallops are a minor export earning \$0.79M in the year ending Dec 2010. This is down from \$1.5M in the year ending Dec 2009. This decrease was caused by a decrease in demand from Australia and Vietnam. The biggest export markets for scallops are France (33.0% by value), Mauritius (10.4%), United Arab Emirates (9.3%) and French Polynesia (7.3%).

Dredge oysters are mainly harvested from Foveaux Strait. Domestic demand for Foveaux Strait oysters exceeds supply, therefore, none are exported. Domestic prices for Foveaux Strait oysters are driven by the high demand and the value of the catch is somewhere around \$12M per annum. The catch of Foveaux Strait oysters for 2010 was 973 tonnes, or 9.54 million oysters.

AQUACULTURE

Currently aquaculture export species are limited to green lipped mussels, salmon and oysters. Export volume of 43,391 tonnes brought \$274.6M in export earnings during the year to Dec 2010. Of this, green lipped mussels accounted for \$171.5M (down 15.3% on the year ending Dec 2009), salmon 85.7M (up 41.0% on the year ending Dec 2009) and oysters \$17.4M (up 8.1% on the year ending Dec 2009).

Key markets for green lipped mussels are United States (30.9% by value), Australia (11.5%), Spain (8.3%) and Korea (7.7%). While the US is the most important market for green lipped mussels, export earnings were down \$6.7M (11.3%) from Dec 2009 year. Green lipped mussel export earnings were also down from the Dec 2009 year for Hong Kong (down 3.0M), Australia (down 0.8M) and Korea (down 0.7M).

Key markets for salmon are Japan (33.1%), Australia (24.8%), United States (19.4%), Taiwan (6.4%) and Hong Kong (3.2%). Export earnings increased in Japan (up \$2.1M), Australia (up \$9.9M), United States (up \$4.7M), Taiwan (up \$0.1M) and Hong Kong (up \$2.0M) from 2009 to 2010.

Oysters were exported to Australia (46.7% by value), Hong Kong (14.5%), French Polynesia (7.8%) and New Caledonia (6.2%).

NOTES

1. Value at first landing data – standard for OECD figures – is not available for the New Zealand catch.
2. The nominal export value was deflated by using the implicit price deflator for gross national expenditure produced by Stats NZ to produce the real export value (inflation adjusted figure).
3. Data for aquaculture species harvest volumes and value are not available at present.
4. All export statistics are sourced from Statistics New Zealand and the New Zealand Seafood Industry Council.
5. All landings and production information are sourced from the Ministry of Fisheries. All landings information is in greenweight, which is whole fish prior to any processing or cutting.
6. Table totals do not calculate from the category totals as categories only include key species. Totals reflect all recorded landings and exports.
7. Export values are NZ\$ free on board (FOB), which is the value of goods at New Zealand ports before export and includes cost of transport to port.

REFERENCES

Quarterly Predictions March 2011, New Zealand Institute for Economic Research, 25/02/2011

STATISTICAL ANNEX

Table 1: Annual Quota Value (\$ million) for the Top 40 QMS species (30 September years)

Species	2004	2005	2006	2007	2008	2009
TOTAL (all QMS species)	3,865.7	3,729.7	3,796.1	3,824.5	3,939.4	4,016.9
Hoki	695.0	541.0	626.8	692.8	729.6	814.6
Rock lobster (CRA and PHC)	644.3	584.9	569.9	621.3	634.4	770.5
Paua	354.9	378.7	365.6	390.0	360.8	304.3
Orange roughy	324.4	299.7	276.9	250.3	319.2	282.0
Snapper	282.4	257.6	226.4	252.2	279.9	262.5
Ling	195.6	219.5	196.9	231.4	234.7	246.2
Hake	147.3	123.4	187.7	141.0	155.7	135.5
Scampi	...	115.7	127.5	119.4	131.4	132.3
Arrow squid	240.3	137.9	297.5	169.6	108.5	116.5
Silver warehou	71.3	70.9	62.7	82.5	83.3	82.6
Tarakihi	65.4	61.9	93.6	78.9	85.6	74.9
Oreo	67.5	67.5	72.3	84.6	86.5	74.4
Southern blue whiting	52.3	58.6	62.0	52.8	63.7	74.3
Jack mackerel	99.5	58.0	27.0	26.5	27.7	53.6
Bluenose	43.4	50.3	43.0	57.8	53.7	43.3
Barracouta	36.9	43.3	41.1	37.7	41.6	40.5
Stargazer	29.3	25.6	25.2	24.1	28.3	39.3
Blue cod	38.7	45.1	56.6	46.0	41.1	38.7
Oysters dredge (OYS and OYU)	29.5	28.6	23.7	22.8	26.0	36.5
School shark	41.9	50.0	44.6	45.1	40.1	34.9
Alfonsino & long-finned beryx	27.8	29.3	29.5	36.0	30.9	30.9
Scallop	47.8	18.2	36.1	30.9	30.5	27.7
Gurnard	16.6	13.5	13.9	15.7	20.7	27.3
Hapuku & bass	24.9	32.3	35.6	34.5	29.1	21.7
Blue warehou	20.9	15.8	13.8	11.3	19.3	19.3
Rig	22.4	21.2	13.9	17.8	20.8	18.7
Flatfish	18.0	18.1	16.7	14.9	20.3	17.6
White Warehou	13.0	13.9	8.2	5.2	15.3	16.8
Southern bluefin tuna	..	48.6	14.1	10.6	12.7	15.4
Trevally	19.7	16.6	15.3	12.9	19.1	14.8
John dory	10.8	8.7	10.8	11.5	14.8	13.7
Blue mackerel	18.3	28.8	14.8	13.7	13.8	13.2
Red cod	71.4	39.6	14.0	21.1	12.7	13.1
Green-lipped mussel	...	10.1	10.5	12.1	12.0	12.2
Gemfish	6.6	6.5	11.7	10.2	10.8	7.7
Kahawai	...	9.8	6.0	5.5	7.1	7.1
Elephant fish	8.1	8.0	10.2	15.2	16.2	6.9
Spiny dogfish	...	4.7	6.7	8.0	4.3	6.1
Kingfish	3.3	4.0	2.9	4.0	3.6	5.4
Kina	4.5	4.7	8.2	8.2	5.5	4.9

Source: Statistics New Zealand

Table 2: Annual Landings of Key Species: 2010, 2009 (31 December years)

	Dec 2010 Year (kgs)	Dec 2009 Year (kgs)	Change from Dec 2009 Year (%)
Aquaculture	N/A	N/A	N/A
Green Lipped Mussels	N/A	N/A	N/A
Oysters	N/A	N/A	N/A
Salmon and Salmonidae	N/A	N/A	N/A
Deepwater	195,411,503	180,828,307	8.06%
Hake	4,881,242	9,757,466	-49.97%
Hoki	108,539,552	91,453,329	18.68%
Ling	13,080,488	11,510,073	13.64%
Orange Roughy	10,088,975	12,000,079	-15.93%
Oreo Dory	19,240,186	15,965,222	20.51%
Scampi	830,611	567,169	46.45%
Southern Blue Whiting	38,750,449	39,581,388	-2.10%
Inshore Finfish	47,919,687	46,676,195	2.66%
Bluenose	2,227,780	2,071,544	7.54%
Blue Cod	2,228,737	2,346,125	-5.00%
John Dory	625,089	679,573	-8.02%
Snapper	6,200,979	6,302,851	-1.62%
Tarakihi	5,520,276	5,889,343	-6.27%
Inshore Shellfish	3,980,393	3,499,534	13.74%
Paua	1,101,524	974,067	13.09%
Rock Lobster	2,878,869	2,525,739	13.98%
Pelagics	124,186,260	133,576,491	-7.03%
Barracouta	26,440,780	27,869,403	-5.13%
Blue Mackerel	8,027,368	10,098,065	-20.51%
Jack Mackerel	40,875,159	40,173,492	1.75%
Squid	32,620,310	46,318,934	-29.57%
Tunas	15,677,052	8,687,546	80.45%
Total Production	434,337,914	427,879,606	1.51%

Source: Ministry of Fisheries

Table 3: Top Ten exports by value during the 2010 calendar year

Species	Export Value (FoB)
Rock Lobster	\$229,221,123
Hoki	\$172,747,270
Mussels	\$171,467,731
Squid	\$87,440,753
Salmon (All)	\$85,676,382
Paua	\$62,683,097
Fish prod unfit for human	\$49,297,624
Orange Roughy	\$48,709,284
Jack Mackerel	\$42,702,397
Ling	\$42,105,679

Source: New Zealand Seafood Industry Council (SeaFIC)

Table 4: Top Ten exports by volume during the 2010 calendar year

Species	Export Volume (kgs)
Hoki	47,473,367
Mussels	34,134,143
Jack Mackerel	29,627,995
Squid	28,969,000
Fish prod unfit for human	19,857,155
Barracouta	18,096,995
Southern Blue Whiting	16,982,728
Tunas (All)	13,396,203
Blue Mackerel	8,925,382
Salmon (All)	7,016,636

Source: New Zealand Seafood Industry Council (SeaFIC)

Table 5: Top 20 Export Markets in 2010 by Export Value

Country	2010 Export Value (\$NZ)	% of Total 2010 Export Value
Australia	\$286,647,330	19.21%
Hong Kong	\$249,978,567	16.76%
China, Peoples Republic Of	\$200,022,313	13.41%
United States	\$178,113,247	11.94%
Japan	\$128,958,203	8.64%
Korea, Republic Of	\$46,562,015	3.12%
Spain	\$43,511,407	2.92%
Germany	\$42,561,446	2.85%
Singapore	\$39,738,480	2.66%
France	\$28,018,274	1.88%
Iran, Islamic Republic Of	\$21,167,375	1.42%
South Africa	\$15,649,724	1.05%
Taiwan, Prv. Of China	\$15,012,105	1.01%
Ukraine	\$13,900,248	0.93%
Canada	\$13,172,175	0.88%
United Kingdom	\$12,952,460	0.87%
Russia	\$12,336,664	0.83%
Thailand	\$12,278,727	0.82%
Greece	\$10,490,817	0.70%
Malaysia	\$8,859,897	0.59%
Rest of the World	\$111,889,540	7.50%
GRAND TOTAL	\$1,491,821,014	100.00%

Source: New Zealand Seafood Industry Council (SeaFIC)

Table 6: Top 20 Export Markets in 2010 by Export Volume

Country	2010 Export Volume (kgs)	% of Total 2010 Export Volume
China, Peoples Republic Of	76,418,587	25.47%
Australia	38,020,700	12.67%
United States	23,349,946	7.78%
Japan	18,387,534	6.13%
Korea, Republic Of	17,502,814	5.83%
Iran, Islamic Republic Of	10,687,946	3.56%
South Africa	9,730,147	3.24%
Spain	9,275,068	3.09%
Hong Kong	7,885,071	2.63%
Germany	7,276,540	2.43%
Ukraine	6,845,334	2.28%
France	5,825,533	1.94%
Thailand	5,088,210	1.70%
Russia	4,903,219	1.63%
Georgia	4,437,220	1.48%
Nigeria	3,537,000	1.18%
Peru	3,403,403	1.13%
Greece	3,085,896	1.03%
Taiwan, Prv. Of China	2,981,013	0.99%
Jordan	2,585,846	0.86%
Rest of the World	38,756,768	12.92%
GRAND TOTAL	299,983,795	100.00%

Source: New Zealand Seafood Industry Council (SeaFIC)

Table 7: Annual chain-volume series (GDP) expressed in 1995/96 prices⁽¹⁾

	Fishing (\$million)	Annual Percentage Change (%)	Total gross domestic product (\$million)	Fishing Percentage of GDP (%)
<i>Series ref: SNC</i>	<i>S1RB01ACT4</i>		<i>S1RB01</i>	
1990	253	-3.80%	80,129	0.32%
1991	265	4.74%	80,162	0.33%
1992	262	-1.13%	79,105	0.33%
1993	276	5.34%	79,984	0.35%
1994	253	-8.33%	85,136	0.30%
1995	256	1.19%	89,675	0.29%
1996	283	10.55%	93,420	0.30%
1997	275	-2.83%	96,666	0.28%
1998	271	-1.45%	98,335	0.28%
1999	275	1.48%	98,842	0.28%
2000	292	6.18%	104,096	0.28%
2001	272	-6.85%	106,553	0.26%
2002	264	-2.94%	110,407	0.24%
2003	231	-12.50%	115,829	0.20%
2004	221	-4.33%	120,813	0.18%
2005	210	-4.98%	125,361	0.17%
2006	218	3.81%	129,079	0.17%
2007	208	-4.59%	131,438	0.16%
2008	197	-5.29%	135,543	0.15%
2009	190	-3.55%	134,028	0.14%

(1) Year ended 31 March

Source: Statistics New Zealand, Compiled by Industry Development team, Strategy Group, Ministry of Fisheries

Table 8: Registered Vessels

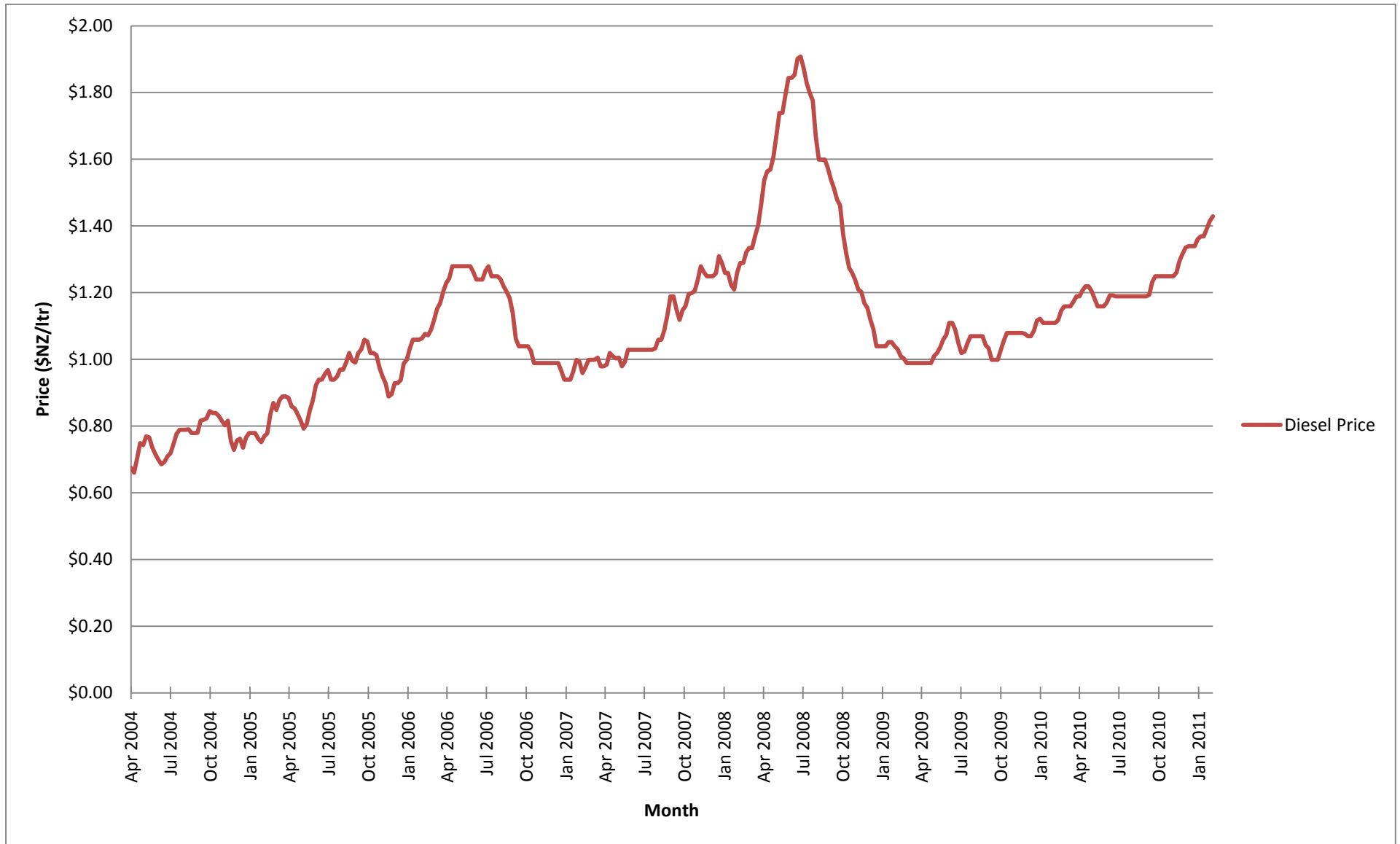
Year	Domestic		Foreign Charter		Grand Total	
	Number of Vessels	Gross Tonnage	Number of Vessels	Gross Tonnage	Number of Vessels	Gross Tonnage
2005	1,588	72,656	66	100,001	1,654	172,658
2006	1,528	71,746	54	82,144	1,582	153,890
2007	1,468	72,388	40	66,275	1,508	138,663
2008	1,400	74,077	33	56,338	1,433	130,416
2009	1,372	73,942	30	51,745	1,402	125,687
2010	1,370	75,523	26	41,963	1,396	117,487

Notes:

1. Registered vessels in this table are vessels that were registered as commercial fishing vessels during that year
2. Gross Tonnage is the gross tonnage of the vessel as submitted by the individual/company registering the vessel. It is a unitless index related to a ship's overall internal volume and is calculated based on "the moulded volume of all enclosed spaces of the ship".

Source: Ministry of Fisheries

Figure 1: Diesel Price



Source: Ministry of Economic Development

Table 9: Inshore Finfish

Date	Quarterly Export Volume (kgs)	Quarterly Export Value (\$NZ)	Quarterly Export Price (\$NZ/kg)	Yearly Export Volume (kgs)	Yearly Export Value (\$NZ)	Yearly Export Price (\$NZ/kg)
Mar-06	4,837,835	\$26,120,665	\$5.40			
Jun-06	4,711,183	\$24,989,811	\$5.30			
Sep-06	3,366,320	\$23,862,291	\$7.09			
Dec-06	4,315,707	\$25,995,768	\$6.02	17,231,045	\$100,968,535	\$5.86
Mar-07	5,351,009	\$29,878,685	\$5.58			
Jun-07	3,733,321	\$23,517,730	\$6.30			
Sep-07	2,693,961	\$19,604,354	\$7.28			
Dec-07	3,970,389	\$26,906,020	\$6.78	15,748,680	\$99,906,789	\$6.34
Mar-08	4,330,370	\$27,306,273	\$6.31			
Jun-08	3,536,360	\$24,110,141	\$6.82			
Sep-08	3,396,586	\$22,998,065	\$6.77			
Dec-08	3,851,867	\$28,626,036	\$7.43	15,115,183	\$103,040,515	\$6.82
Mar-09	3,873,014	\$31,503,138	\$8.13			
Jun-09	3,619,990	\$26,085,833	\$7.21			
Sep-09	3,921,482	\$24,975,092	\$6.37			
Dec-09	3,777,300	\$27,974,133	\$7.41	15,191,786	\$110,538,196	\$7.28
Mar-10	4,188,551	\$30,134,496	\$7.19			
Jun-10	3,763,166	\$25,292,238	\$6.72			
Sep-10	4,382,886	\$24,425,680	\$5.57			
Dec-10	4,901,684	\$34,003,957	\$6.94	17,236,287	\$113,856,371	\$6.61

Source: Statistics New Zealand and New Zealand Seafood Industry Council

Table 9a: Snapper

Date	Quarterly Export Volume (kgs)	Quarterly Export Value (\$NZ)	Quarterly Export Price (\$NZ/kg)	Yearly Export Volume (kgs)	Yearly Export Value (\$NZ)	Yearly Export Price (\$NZ/kg)
Mar-06	1,173,840	\$7,662,780	\$6.53			
Jun-06	897,632	\$6,442,335	\$7.18			
Sep-06	779,279	\$6,025,557	\$7.73			
Dec-06	1,329,973	\$9,288,246	\$6.98	4,180,724	\$29,418,918	\$7.04
Mar-07	1,054,371	\$8,148,570	\$7.73			
Jun-07	722,830	\$6,268,493	\$8.67			
Sep-07	687,402	\$6,003,159	\$8.73			
Dec-07	1,089,309	\$9,804,491	\$9.00	3,553,912	\$30,224,713	\$8.50
Mar-08	896,601	\$7,884,382	\$8.79			
Jun-08	706,628	\$6,376,931	\$9.02			
Sep-08	780,958	\$7,313,172	\$9.36			
Dec-08	1,074,372	\$10,787,963	\$10.04	3,458,559	\$32,362,448	\$9.36
Mar-09	1,020,352	\$10,512,400	\$10.30			
Jun-09	832,210	\$7,762,784	\$9.33			
Sep-09	885,700	\$8,169,374	\$9.22			
Dec-09	1,047,172	\$9,750,971	\$9.31	3,785,434	\$36,195,529	\$9.56
Mar-10	887,649	\$8,543,036	\$9.62			
Jun-10	790,256	\$7,140,702	\$9.04			
Sep-10	844,856	\$7,758,792	\$9.18			
Dec-10	1,233,765	\$11,652,104	\$9.44	3,756,526	\$35,094,634	\$9.34

Source: Statistics New Zealand and New Zealand Seafood Industry Council

Table 9b: Bluenose

Date	Quarterly Export Volume (kgs)	Quarterly Export Value (\$NZ)	Quarterly Export Price (\$NZ/kg)	Yearly Export Volume (kgs)	Yearly Export Value (\$NZ)	Yearly Export Price (\$NZ/kg)
Mar-06	427,332	\$3,416,304	\$7.99			
Jun-06	317,970	\$3,055,829	\$9.61			
Sep-06	298,557	\$2,856,472	\$9.57			
Dec-06	364,035	\$3,177,292	\$8.73	1,407,894	\$12,505,897	\$8.88
Mar-07	433,307	\$4,004,942	\$9.24			
Jun-07	340,653	\$3,536,415	\$10.38			
Sep-07	278,377	\$2,891,020	\$10.39			
Dec-07	348,743	\$3,919,142	\$11.24	1,401,080	\$14,351,519	\$10.24
Mar-08	387,036	\$4,117,570	\$10.64			
Jun-08	326,866	\$3,459,676	\$10.58			
Sep-08	270,781	\$3,005,625	\$11.10			
Dec-08	333,592	\$4,019,914	\$12.05	1,318,275	\$14,602,785	\$11.08
Mar-09	330,058	\$3,958,906	\$11.99			
Jun-09	235,159	\$2,890,194	\$12.29			
Sep-09	239,449	\$2,755,326	\$11.51			
Dec-09	299,867	\$3,448,328	\$11.50	1,104,533	\$13,052,754	\$11.82
Mar-10	331,870	\$3,707,636	\$11.17			
Jun-10	212,057	\$2,526,960	\$11.92			
Sep-10	247,611	\$2,953,187	\$11.93			
Dec-10	355,566	\$4,174,574	\$11.74	1,147,104	\$13,362,357	\$11.65

Source: Statistics New Zealand and New Zealand Seafood Industry Council

Table 9c: John Dory

Date	Quarterly Export Volume (kgs)	Quarterly Export Value (\$NZ)	Quarterly Export Price (\$NZ/kg)	Yearly Export Volume (kgs)	Yearly Export Value (\$NZ)	Yearly Export Price (\$NZ/kg)
Mar-06	153,048	\$1,438,875	\$9.40			
Jun-06	125,639	\$1,313,105	\$10.45			
Sep-06	144,050	\$1,484,454	\$10.31			
Dec-06	155,612	\$1,582,031	\$10.17	578,349	\$5,818,465	\$10.06
Mar-07	190,584	\$1,883,270	\$9.88			
Jun-07	120,792	\$1,292,912	\$10.70			
Sep-07	118,120	\$1,107,643	\$9.38			
Dec-07	137,250	\$1,343,379	\$9.79	566,746	\$5,627,204	\$9.93
Mar-08	175,932	\$1,736,936	\$9.87			
Jun-08	98,660	\$1,059,479	\$10.74			
Sep-08	101,809	\$1,033,034	\$10.15			
Dec-08	130,956	\$1,506,871	\$11.51	507,357	\$5,336,320	\$10.52
Mar-09	150,684	\$2,008,706	\$13.33			
Jun-09	91,259	\$1,066,156	\$11.68			
Sep-09	76,216	\$875,543	\$11.49			
Dec-09	118,007	\$1,433,389	\$12.15	436,166	\$5,383,794	\$12.34
Mar-10	169,524	\$1,793,267	\$10.58			
Jun-10	71,950	\$881,387	\$12.25			
Sep-10	70,417	\$860,476	\$12.22			
Dec-10	125,894	\$1,525,483	\$12.12	437,785	\$5,060,613	\$11.56

Source: Statistics New Zealand and New Zealand Seafood Industry Council

Table 9d: Tarakihi

Date	Quarterly Export Volume (kgs)	Quarterly Export Value (\$NZ)	Quarterly Export Price (\$NZ/kg)	Yearly Export Volume (kgs)	Yearly Export Value (\$NZ)	Yearly Export Price (\$NZ/kg)
Mar-06	32,369	\$82,875	\$2.56			
Jun-06	28,399	\$188,868	\$6.65			
Sep-06	45,306	\$309,658	\$6.83			
Dec-06	10,246	\$68,760	\$6.71	116,320	\$650,161	\$5.59
Mar-07	37,348	\$173,791	\$4.65			
Jun-07	30,849	\$149,466	\$4.85			
Sep-07	44,460	\$114,512	\$2.58			
Dec-07	15,419	\$70,228	\$4.55	128,076	\$507,997	\$3.97
Mar-08	12,791	\$70,539	\$5.51			
Jun-08	17,734	\$151,809	\$8.56			
Sep-08	53,571	\$205,497	\$3.84			
Dec-08	10,686	\$111,213	\$10.41	94,782	\$539,058	\$5.69
Mar-09	84,929	\$402,082	\$4.73			
Jun-09	104,778	\$724,630	\$6.92			
Sep-09	41,017	\$374,746	\$9.14			
Dec-09	26,103	\$280,082	\$10.73	256,827	\$1,781,540	\$6.94
Mar-10	36,622	\$413,161	\$11.28			
Jun-10	31,102	\$316,969	\$10.19			
Sep-10	33,432	\$244,435	\$7.31			
Dec-10	32,446	\$371,335	\$11.44	133,602	\$1,345,900	\$10.07

Source: Statistics New Zealand and New Zealand Seafood Industry Council

Table 9e: Blue Cod

Date	Quarterly Export Volume (kgs)	Quarterly Export Value (\$NZ)	Quarterly Export Price (\$NZ/kg)	Yearly Export Volume (kgs)	Yearly Export Value (\$NZ)	Yearly Export Price (\$NZ/kg)
Mar-06	707	\$11,399	\$16.12			
Jun-06	10,095	\$121,898	\$12.08			
Sep-06	8,441	\$113,024	\$13.39			
Dec-06	2,065	\$39,318	\$19.04	21,308	\$285,639	\$13.41
Mar-07	25,514	\$197,942	\$7.76			
Jun-07	33,486	\$259,522	\$7.75			
Sep-07	38,292	\$260,679	\$6.81			
Dec-07	44,140	\$344,940	\$7.81	141,432	\$1,063,083	\$7.52
Mar-08	21,774	\$169,026	\$7.76			
Jun-08	19,748	\$200,770	\$10.17			
Sep-08	21,856	\$199,728	\$9.14			
Dec-08	19,993	\$190,876	\$9.55	83,371	\$760,400	\$9.12
Mar-09	1,453	\$28,292	\$19.47			
Jun-09	16,536	\$142,848	\$8.64			
Sep-09	37,181	\$306,301	\$8.24			
Dec-09	24,998	\$209,785	\$8.39	80,168	\$687,226	\$8.57
Mar-10	1,522	\$28,972	\$19.04			
Jun-10	16,772	\$185,097	\$11.04			
Sep-10	10,554	\$117,647	\$11.15			
Dec-10	3,753	\$54,202	\$14.44	32,601	\$385,918	\$11.84

Source: Statistics New Zealand and New Zealand Seafood Industry Council

Table 10: Deepwater Species

Date	Quarterly Export Volume (kgs)	Quarterly Export Value (\$NZ)	Quarterly Export Price (\$NZ/kg)	Yearly Export Volume (kgs)	Yearly Export Value (\$NZ)	Yearly Export Price (\$NZ/kg)
Mar-06	12,870,794	\$67,846,629	\$5.27			
Jun-06	12,753,920	\$74,663,419	\$5.85			
Sep-06	23,074,129	\$117,035,531	\$5.07			
Dec-06	26,238,898	\$111,236,350	\$4.24	74,937,741	\$370,781,929	\$4.95
Mar-07	14,347,232	\$67,977,656	\$4.74			
Jun-07	13,353,232	\$62,128,167	\$4.65			
Sep-07	25,348,144	\$100,187,680	\$3.95			
Dec-07	23,004,017	\$99,469,615	\$4.32	76,052,625	\$329,763,118	\$4.34
Mar-08	15,376,438	\$74,117,326	\$4.82			
Jun-08	14,652,188	\$64,302,192	\$4.39			
Sep-08	21,590,029	\$102,406,216	\$4.74			
Dec-08	18,235,062	\$91,480,990	\$5.02	69,853,717	\$332,306,724	\$4.76
Mar-09	17,791,189	\$96,818,532	\$5.44			
Jun-09	12,023,398	\$65,667,345	\$5.46			
Sep-09	20,930,343	\$92,791,353	\$4.43			
Dec-09	25,423,001	\$99,306,978	\$3.91	76,167,931	\$354,584,208	\$4.66
Mar-10	13,591,461	\$62,491,818	\$4.60			
Jun-10	15,836,941	\$73,003,456	\$4.61			
Sep-10	27,043,349	\$106,494,364	\$3.94			
Dec-10	26,356,418	\$102,488,438	\$3.89	82,828,169	\$344,478,076	\$4.16

Source: Statistics New Zealand and New Zealand Seafood Industry Council

Table 10a: Hoki

Date	Quarterly Export Volume (kgs)	Quarterly Export Value (\$NZ)	Quarterly Export Price (\$NZ/kg)	Yearly Export Volume (kgs)	Yearly Export Value (\$NZ)	Yearly Export Price (\$NZ/kg)
Mar-06	6,438,082	\$25,281,817	\$3.93			
Jun-06	7,870,580	\$35,435,551	\$4.50			
Sep-06	14,584,248	\$52,819,092	\$3.62			
Dec-06	12,410,953	\$40,261,105	\$3.24	41,303,863	\$153,797,565	\$3.72
Mar-07	7,739,158	\$31,019,892	\$4.01			
Jun-07	7,303,118	\$29,341,811	\$4.02			
Sep-07	16,042,595	\$43,560,549	\$2.72			
Dec-07	9,940,859	\$36,566,367	\$3.68	41,025,730	\$140,488,619	\$3.42
Mar-08	8,344,846	\$32,255,211	\$3.87			
Jun-08	8,139,069	\$29,383,384	\$3.61			
Sep-08	12,979,751	\$51,027,345	\$3.93			
Dec-08	9,155,090	\$38,070,507	\$4.16	38,618,756	\$150,736,447	\$3.90
Mar-09	8,886,053	\$46,248,216	\$5.20			
Jun-09	5,841,581	\$26,869,499	\$4.60			
Sep-09	11,022,676	\$43,739,081	\$3.97			
Dec-09	9,108,162	\$35,607,814	\$3.91	34,858,472	\$152,464,610	\$4.37
Mar-10	7,399,304	\$29,637,031	\$4.01			
Jun-10	9,230,116	\$36,652,540	\$3.97			
Sep-10	18,138,702	\$59,120,432	\$3.26			
Dec-10	12,705,245	\$47,337,267	\$3.73	47,473,367	\$172,747,270	\$3.64

Source: Statistics New Zealand and New Zealand Seafood Industry Council

Table 10b: Oreo Dory

Date	Quarterly Export Volume (kgs)	Quarterly Export Value (\$NZ)	Quarterly Export Price (\$NZ/kg)	Yearly Export Volume (kgs)	Yearly Export Value (\$NZ)	Yearly Export Price (\$NZ/kg)
Mar-06	1,121,251	\$4,522,285	\$4.03			
Jun-06	1,187,607	\$4,819,829	\$4.06			
Sep-06	1,117,865	\$4,849,059	\$4.34			
Dec-06	1,403,025	\$6,180,742	\$4.41	4,829,748	\$20,371,915	\$4.22
Mar-07	1,449,973	\$6,114,749	\$4.22			
Jun-07	1,688,441	\$6,027,130	\$3.57			
Sep-07	918,238	\$2,415,959	\$2.63			
Dec-07	1,665,255	\$4,841,527	\$2.91	5,721,907	\$19,399,365	\$3.39
Mar-08	1,386,714	\$4,257,255	\$3.07			
Jun-08	1,538,996	\$4,897,259	\$3.18			
Sep-08	1,463,177	\$4,795,258	\$3.28			
Dec-08	950,112	\$4,034,096	\$4.25	5,338,999	\$17,983,868	\$3.37
Mar-09	1,641,725	\$5,807,814	\$3.54			
Jun-09	1,109,025	\$4,083,000	\$3.68			
Sep-09	1,455,474	\$5,570,234	\$3.83			
Dec-09	1,110,269	\$4,196,929	\$3.78	5,316,493	\$19,657,977	\$3.70
Mar-10	965,253	\$5,291,629	\$5.48			
Jun-10	1,483,463	\$4,644,961	\$3.13			
Sep-10	1,101,851	\$4,872,400	\$4.42			
Dec-10	1,221,059	\$4,977,252	\$4.08	4,771,626	\$19,786,242	\$4.15

Source: Statistics New Zealand and New Zealand Seafood Industry Council

Table 10c: Orange Roughy

Date	Quarterly Export Volume (kgs)	Quarterly Export Value (\$NZ)	Quarterly Export Price (\$NZ/kg)	Yearly Export Volume (kgs)	Yearly Export Value (\$NZ)	Yearly Export Price (\$NZ/kg)
Mar-06	1,643,038	\$19,039,146	\$11.59			
Jun-06	1,717,340	\$24,014,690	\$13.98			
Sep-06	2,418,954	\$24,915,312	\$10.30			
Dec-06	1,482,155	\$15,946,646	\$10.76	7,261,487	\$83,915,794	\$11.56
Mar-07	1,237,066	\$12,256,397	\$9.91			
Jun-07	1,979,300	\$16,870,787	\$8.52			
Sep-07	1,818,646	\$14,104,231	\$7.76			
Dec-07	1,846,439	\$14,214,567	\$7.70	6,881,451	\$57,445,982	\$8.35
Mar-08	1,695,032	\$15,401,965	\$9.09			
Jun-08	1,446,392	\$16,007,889	\$11.07			
Sep-08	1,691,851	\$16,886,480	\$9.98			
Dec-08	1,025,890	\$12,521,389	\$12.21	5,859,165	\$60,817,723	\$10.38
Mar-09	940,674	\$11,841,117	\$12.59			
Jun-09	831,195	\$10,493,772	\$12.62			
Sep-09	1,246,842	\$14,758,980	\$11.84			
Dec-09	1,074,748	\$13,935,714	\$12.97	4,093,459	\$51,029,583	\$12.47
Mar-10	627,545	\$8,791,205	\$14.01			
Jun-10	746,349	\$11,786,049	\$15.79			
Sep-10	1,066,765	\$14,669,665	\$13.75			
Dec-10	718,121	\$13,462,365	\$18.75	3,158,780	\$48,709,284	\$15.42

Source: Statistics New Zealand and New Zealand Seafood Industry Council

Table 10d: Southern Blue Whiting

Date	Quarterly Export Volume (kgs)	Quarterly Export Value (\$NZ)	Quarterly Export Price (\$NZ/kg)	Yearly Export Volume (kgs)	Yearly Export Value (\$NZ)	Yearly Export Price (\$NZ/kg)
Mar-06	1,326,636	\$1,785,962	\$1.35			
Jun-06	917,040	\$1,414,455	\$1.54			
Sep-06	1,280,209	\$3,129,470	\$2.44			
Dec-06	5,844,734	\$12,463,199	\$2.13	9,368,619	\$18,793,086	\$2.01
Mar-07	1,431,459	\$1,299,639	\$0.91			
Jun-07	1,343,462	\$1,306,082	\$0.97			
Sep-07	553,700	\$333,142	\$0.60			
Dec-07	5,158,587	\$9,659,210	\$1.87	8,487,208	\$12,598,073	\$1.48
Mar-08	1,024,602	\$1,100,551	\$1.07			
Jun-08	1,815,982	\$1,303,458	\$0.72			
Sep-08	2,973,354	\$6,745,429	\$2.27			
Dec-08	4,809,236	\$13,542,335	\$2.82	10,623,174	\$22,691,773	\$2.14
Mar-09	3,432,671	\$5,184,463	\$1.51			
Jun-09	1,672,044	\$2,606,967	\$1.56			
Sep-09	4,423,329	\$7,578,954	\$1.71			
Dec-09	10,510,710	\$19,679,326	\$1.87	20,038,754	\$35,049,710	\$1.75
Mar-10	2,394,995	\$2,775,541	\$1.16			
Jun-10	1,774,588	\$2,291,714	\$1.29			
Sep-10	4,048,128	\$6,637,747	\$1.64			
Dec-10	8,765,017	\$14,300,257	\$1.63	16,982,728	\$26,005,259	\$1.53

Source: Statistics New Zealand and New Zealand Seafood Industry Council

Table 10e: Scampi

Date	Quarterly Export Volume (kgs)	Quarterly Export Value (\$NZ)	Quarterly Export Price (\$NZ/kg)	Yearly Export Volume (kgs)	Yearly Export Value (\$NZ)	Yearly Export Price (\$NZ/kg)
Mar-06	175,554	\$4,827,796	\$27.50			
Jun-06	107,192	\$2,703,893	\$25.22			
Sep-06	156,812	\$4,807,171	\$30.66			
Dec-06	27,352	\$268,874	\$9.83	466,910	\$12,607,734	\$27.00
Mar-07	18,000	\$282,997	\$15.72			
Jun-07	96,364	\$1,094,629	\$11.36			
Sep-07	14,003	\$174,091	\$12.43			
Dec-07	30,685	\$371,387	\$12.10	159,052	\$1,923,104	\$12.09
Mar-08	60,926	\$922,716	\$15.14			
Jun-08	19,675	\$233,729	\$11.88			
Sep-08	171,584	\$5,157,094	\$30.06			
Dec-08	185,657	\$5,504,440	\$29.65	437,842	\$11,817,979	\$26.99
Mar-09	119,875	\$4,602,226	\$38.39			
Jun-09	112,318	\$4,107,522	\$36.57			
Sep-09	123,527	\$3,743,448	\$30.30			
Dec-09	199,384	\$6,240,806	\$31.30	555,104	\$18,694,002	\$33.68
Mar-10	142,228	\$3,146,591	\$22.12			
Jun-10	103,136	\$2,835,491	\$27.49			
Sep-10	192,694	\$5,695,145	\$29.56			
Dec-10	137,163	\$4,145,734	\$30.22	575,221	\$15,822,961	\$27.51

Source: Statistics New Zealand and New Zealand Seafood Industry Council

Table 10f: Hake

Date	Quarterly Export Volume (kgs)	Quarterly Export Value (\$NZ)	Quarterly Export Price (\$NZ/kg)	Yearly Export Volume (kgs)	Yearly Export Value (\$NZ)	Yearly Export Price (\$NZ/kg)
Mar-06	1,118,406	\$6,863,090	\$6.14			
Jun-06	738,602	\$4,594,133	\$6.22			
Sep-06	2,212,642	\$16,135,939	\$7.29			
Dec-06	2,190,271	\$14,078,663	\$6.43	6,259,921	\$41,671,825	\$6.66
Mar-07	938,000	\$5,578,238	\$5.95			
Jun-07	247,737	\$1,500,405	\$6.06			
Sep-07	4,385,376	\$26,327,915	\$6.00			
Dec-07	1,466,218	\$9,590,609	\$6.54	7,037,331	\$42,997,167	\$6.11
Mar-08	1,103,730	\$6,835,348	\$6.19			
Jun-08	394,220	\$2,565,381	\$6.51			
Sep-08	940,096	\$7,826,099	\$8.32			
Dec-08	1,005,241	\$9,882,688	\$9.83	3,443,287	\$27,109,516	\$7.87
Mar-09	1,233,851	\$11,826,371	\$9.58			
Jun-09	648,099	\$6,035,451	\$9.31			
Sep-09	970,408	\$6,906,548	\$7.12			
Dec-09	1,923,581	\$11,067,611	\$5.75	4,775,939	\$35,835,981	\$7.50
Mar-10	426,437	\$2,468,859	\$5.79			
Jun-10	1,455,878	\$6,847,847	\$4.70			
Sep-10	1,156,888	\$5,172,825	\$4.47			
Dec-10	1,027,821	\$4,811,850	\$4.68	4,067,024	\$19,301,381	\$4.75

Source: Statistics New Zealand and New Zealand Seafood Industry Council

Table 10g: Ling

Date	Quarterly Export Volume (kgs)	Quarterly Export Value (\$NZ)	Quarterly Export Price (\$NZ/kg)	Yearly Export Volume (kgs)	Yearly Export Value (\$NZ)	Yearly Export Price (\$NZ/kg)
Mar-06	1,161,439	\$6,857,154	\$5.90			
Jun-06	640,696	\$4,997,459	\$7.80			
Sep-06	1,646,521	\$13,245,870	\$8.04			
Dec-06	3,412,129	\$25,907,902	\$7.59	6,860,785	\$51,008,385	\$7.43
Mar-07	1,533,576	\$11,425,744	\$7.45			
Jun-07	660,518	\$5,811,430	\$8.80			
Sep-07	1,524,663	\$12,829,094	\$8.41			
Dec-07	2,845,793	\$23,967,603	\$8.42	6,564,550	\$54,033,871	\$8.23
Mar-08	1,742,735	\$13,243,495	\$7.60			
Jun-08	1,223,514	\$9,480,320	\$7.75			
Sep-08	1,361,224	\$9,909,091	\$7.28			
Dec-08	1,101,691	\$7,911,153	\$7.18	5,429,164	\$40,544,059	\$7.47
Mar-09	1,536,340	\$11,308,325	\$7.36			
Jun-09	1,809,136	\$11,471,134	\$6.34			
Sep-09	1,688,087	\$10,494,108	\$6.22			
Dec-09	1,496,147	\$8,578,778	\$5.73	6,529,710	\$41,852,345	\$6.41
Mar-10	1,635,699	\$10,380,962	\$6.35			
Jun-10	1,043,411	\$7,944,854	\$7.61			
Sep-10	1,338,321	\$10,326,150	\$7.72			
Dec-10	1,781,992	\$13,453,713	\$7.55	5,799,423	\$42,105,679	\$7.26

Source: Statistics New Zealand and New Zealand Seafood Industry Council

Table 11: Inshore Shellfish

Date	Quarterly Export Volume (kgs)	Quarterly Export Value (\$NZ)	Quarterly Export Price (\$NZ/kg)	Yearly Export Volume (kgs)	Yearly Export Value (\$NZ)	Yearly Export Price (\$NZ/kg)
Mar-06	539,367	\$28,442,756	\$52.73			
Jun-06	617,529	\$37,770,498	\$61.16			
Sep-06	1,049,478	\$60,905,738	\$58.03			
Dec-06	966,980	\$54,208,163	\$56.06	3,173,354	\$181,327,155	\$57.14
Mar-07	651,250	\$36,649,400	\$56.28			
Jun-07	581,214	\$34,704,602	\$59.71			
Sep-07	917,214	\$54,382,852	\$59.29			
Dec-07	1,006,681	\$54,776,845	\$54.41	3,156,359	\$180,513,699	\$57.19
Mar-08	588,882	\$35,420,846	\$60.15			
Jun-08	665,405	\$43,735,647	\$65.73			
Sep-08	1,122,436	\$78,047,559	\$69.53			
Dec-08	919,695	\$68,608,595	\$74.60	3,296,418	\$225,812,647	\$68.50
Mar-09	566,263	\$47,775,689	\$84.37			
Jun-09	604,354	\$48,630,720	\$80.47			
Sep-09	1,098,993	\$75,585,822	\$68.78			
Dec-09	1,061,665	\$60,173,332	\$56.68	3,331,275	\$232,165,563	\$69.69
Mar-10	814,098	\$55,646,546	\$68.35			
Jun-10	806,475	\$64,401,647	\$79.86			
Sep-10	1,171,101	\$93,422,201	\$79.77			
Dec-10	1,166,061	\$78,433,196	\$67.26	3,957,735	\$291,903,590	\$73.76

Source: Statistics New Zealand and New Zealand Seafood Industry Council

Table 11a: Rock Lobster

Date	Quarterly Export Volume (kgs)	Quarterly Export Value (\$NZ)	Quarterly Export Price (\$NZ/kg)	Yearly Export Volume (kgs)	Yearly Export Value (\$NZ)	Yearly Export Price (\$NZ/kg)
Mar-06	418,705	\$19,610,573	\$46.84			
Jun-06	491,729	\$28,524,605	\$58.01			
Sep-06	915,416	\$50,812,617	\$55.51			
Dec-06	585,772	\$28,098,833	\$47.97	2,411,622	\$127,046,628	\$52.68
Mar-07	439,594	\$21,789,130	\$49.57			
Jun-07	474,068	\$27,404,057	\$57.81			
Sep-07	813,393	\$47,166,439	\$57.99			
Dec-07	537,324	\$25,544,260	\$47.54	2,264,379	\$121,903,886	\$53.84
Mar-08	474,631	\$27,745,922	\$58.46			
Jun-08	577,567	\$37,171,377	\$64.36			
Sep-08	1,027,712	\$71,322,776	\$69.40			
Dec-08	558,602	\$43,280,653	\$77.48	2,638,512	\$179,520,728	\$68.04
Mar-09	403,643	\$37,058,752	\$91.81			
Jun-09	503,224	\$41,549,618	\$82.57			
Sep-09	947,368	\$67,590,575	\$71.35			
Dec-09	592,384	\$38,032,434	\$64.20	2,446,619	\$184,231,379	\$75.30
Mar-10	580,997	\$43,021,261	\$74.05			
Jun-10	694,378	\$57,461,714	\$82.75			
Sep-10	927,717	\$80,429,945	\$86.70			
Dec-10	620,681	\$48,307,573	\$77.83	2,823,773	\$229,220,493	\$81.18

Source: Statistics New Zealand and New Zealand Seafood Industry Council

Table 11b: Paua

Date	Quarterly Export Volume (kgs)	Quarterly Export Value (\$NZ)	Quarterly Export Price (\$NZ/kg)	Yearly Export Volume (kgs)	Yearly Export Value (\$NZ)	Yearly Export Price (\$NZ/kg)
Mar-06	120,662	\$8,832,183	\$73.20			
Jun-06	125,800	\$9,245,893	\$73.50			
Sep-06	134,062	\$10,093,121	\$75.29			
Dec-06	381,208	\$26,109,330	\$68.49	761,732	\$54,280,527	\$71.26
Mar-07	211,656	\$14,860,270	\$70.21			
Jun-07	107,146	\$7,300,545	\$68.14			
Sep-07	103,821	\$7,216,413	\$69.51			
Dec-07	469,357	\$29,232,585	\$62.28	891,980	\$58,609,813	\$65.71
Mar-08	114,251	\$7,674,924	\$67.18			
Jun-08	87,838	\$6,564,270	\$74.73			
Sep-08	94,724	\$6,724,783	\$70.99			
Dec-08	361,093	\$25,327,942	\$70.14	657,906	\$46,291,919	\$70.36
Mar-09	162,620	\$10,716,937	\$65.90			
Jun-09	101,130	\$7,081,102	\$70.02			
Sep-09	151,625	\$7,995,247	\$52.73			
Dec-09	469,281	\$22,140,898	\$47.18	884,656	\$47,934,184	\$54.18
Mar-10	233,101	\$12,625,285	\$54.16			
Jun-10	112,097	\$6,939,933	\$61.91			
Sep-10	243,384	\$12,992,256	\$53.38			
Dec-10	545,380	\$30,125,623	\$55.24	1,133,962	\$62,683,097	\$55.28

Source: Statistics New Zealand and New Zealand Seafood Industry Council

Table 12: Aquaculture

Date	Quarterly Export Volume (kgs)	Quarterly Export Value (\$NZ)	Quarterly Export Price (\$NZ/kg)	Yearly Export Volume (kgs)	Yearly Export Value (\$NZ)	Yearly Export Price (\$NZ/kg)
Mar-06	9,725,569	\$52,361,369	\$5.38			
Jun-06	12,132,959	\$68,182,906	\$5.62			
Sep-06	8,756,901	\$54,844,734	\$6.26			
Dec-06	11,695,373	\$66,873,851	\$5.72	42,310,802	\$242,262,860	\$5.73
Mar-07	11,282,782	\$59,620,827	\$5.28			
Jun-07	12,114,380	\$62,129,016	\$5.13			
Sep-07	9,144,083	\$49,751,386	\$5.44			
Dec-07	9,758,608	\$57,766,659	\$5.92	42,299,853	\$229,267,888	\$5.42
Mar-08	9,069,557	\$50,330,085	\$5.55			
Jun-08	11,840,137	\$71,527,841	\$6.04			
Sep-08	7,875,597	\$60,574,993	\$7.69			
Dec-08	9,305,608	\$82,350,200	\$8.85	38,090,899	\$264,783,119	\$6.95
Mar-09	9,879,705	\$81,848,482	\$8.28			
Jun-09	11,689,747	\$79,869,566	\$6.83			
Sep-09	9,257,203	\$58,489,265	\$6.32			
Dec-09	10,187,857	\$59,183,407	\$5.81	41,014,512	\$279,390,720	\$6.81
Mar-10	10,105,228	\$58,624,448	\$5.80			
Jun-10	12,120,816	\$74,451,452	\$6.14			
Sep-10	9,079,973	\$60,155,989	\$6.63			
Dec-10	12,085,032	\$81,363,205	\$6.73	43,391,049	\$274,595,094	\$6.33

Source: Statistics New Zealand and New Zealand Seafood Industry Council

Table 12a: Green Lipped Mussels

Date	Quarterly Export Volume (kgs)	Quarterly Export Value (\$NZ)	Quarterly Export Price (\$NZ/kg)	Yearly Export Volume (kgs)	Yearly Export Value (\$NZ)	Yearly Export Price (\$NZ/kg)
Mar-06	8,360,485	\$41,859,116	\$5.01			
Jun-06	10,733,706	\$56,378,333	\$5.25			
Sep-06	6,632,586	\$36,446,822	\$5.50			
Dec-06	9,415,942	\$47,021,819	\$4.99	35,142,719	\$181,706,090	\$5.17
Mar-07	10,319,359	\$50,318,382	\$4.88			
Jun-07	10,990,834	\$52,224,770	\$4.75			
Sep-07	7,822,466	\$36,972,290	\$4.73			
Dec-07	7,733,872	\$37,556,917	\$4.86	36,866,531	\$177,072,359	\$4.80
Mar-08	8,020,277	\$38,772,352	\$4.83			
Jun-08	10,762,456	\$60,134,499	\$5.59			
Sep-08	6,362,876	\$43,226,615	\$6.79			
Dec-08	7,579,101	\$61,330,673	\$8.09	32,724,710	\$203,464,139	\$6.22
Mar-09	8,708,801	\$66,196,183	\$7.60			
Jun-09	9,629,122	\$57,862,779	\$6.01			
Sep-09	7,333,976	\$39,193,365	\$5.34			
Dec-09	8,170,927	\$39,215,840	\$4.80	33,842,826	\$202,468,167	\$5.98
Mar-10	8,348,062	\$39,628,126	\$4.75			
Jun-10	9,288,656	\$44,536,565	\$4.79			
Sep-10	6,962,799	\$35,440,338	\$5.09			
Dec-10	9,534,626	\$51,862,702	\$5.44	34,134,143	\$171,467,731	\$5.02

Source: Statistics New Zealand and New Zealand Seafood Industry Council

Table 12b: Oysters

Date	Quarterly Export Volume (kgs)	Quarterly Export Value (\$NZ)	Quarterly Export Price (\$NZ/kg)	Yearly Export Volume (kgs)	Yearly Export Value (\$NZ)	Yearly Export Price (\$NZ/kg)
Mar-06	305,078	\$2,320,372	\$7.61			
Jun-06	309,206	\$2,323,299	\$7.51			
Sep-06	924,132	\$6,251,464	\$6.76			
Dec-06	1,046,562	\$7,124,242	\$6.81	2,584,978	\$18,019,377	\$6.97
Mar-07	275,911	\$1,809,791	\$6.56			
Jun-07	374,538	\$2,271,062	\$6.06			
Sep-07	580,303	\$4,128,234	\$7.11			
Dec-07	957,075	\$8,072,080	\$8.43	2,187,827	\$16,281,167	\$7.44
Mar-08	199,546	\$1,743,396	\$8.74			
Jun-08	254,126	\$2,177,968	\$8.57			
Sep-08	595,142	\$5,862,073	\$9.85			
Dec-08	822,884	\$7,065,548	\$8.59	1,871,698	\$16,848,985	\$9.00
Mar-09	228,519	\$1,918,470	\$8.40			
Jun-09	408,928	\$3,145,315	\$7.69			
Sep-09	560,322	\$4,253,472	\$7.59			
Dec-09	892,773	\$6,824,614	\$7.64	2,090,542	\$16,141,871	\$7.72
Mar-10	373,848	\$2,925,557	\$7.83			
Jun-10	506,331	\$3,740,154	\$7.39			
Sep-10	543,090	\$4,204,047	\$7.74			
Dec-10	817,051	\$6,581,598	\$8.06	2,240,320	\$17,451,356	\$7.79

Source: Statistics New Zealand and New Zealand Seafood Industry Council

Table 12c: Salmon

Date	Quarterly Export Volume (kgs)	Quarterly Export Value (\$NZ)	Quarterly Export Price (\$NZ/kg)	Yearly Export Volume (kgs)	Yearly Export Value (\$NZ)	Yearly Export Price (\$NZ/kg)
Mar-06	1,060,006	\$8,181,881	\$7.72			
Jun-06	1,090,047	\$9,481,274	\$8.70			
Sep-06	1,200,183	\$12,146,448	\$10.12			
Dec-06	1,232,869	\$12,727,790	\$10.32	4,583,105	\$42,537,393	\$9.28
Mar-07	687,512	\$7,492,654	\$10.90			
Jun-07	749,008	\$7,633,184	\$10.19			
Sep-07	741,314	\$8,650,862	\$11.67			
Dec-07	1,067,661	\$12,137,662	\$11.37	3,245,495	\$35,914,362	\$11.07
Mar-08	849,734	\$9,814,337	\$11.55			
Jun-08	823,555	\$9,215,374	\$11.19			
Sep-08	917,579	\$11,486,305	\$12.52			
Dec-08	903,623	\$13,953,979	\$15.44	3,494,491	\$44,469,995	\$12.73
Mar-09	942,385	\$13,733,829	\$14.57			
Jun-09	1,651,697	\$18,861,472	\$11.42			
Sep-09	1,362,905	\$15,042,428	\$11.04			
Dec-09	1,124,157	\$13,142,953	\$11.69	5,081,144	\$60,780,682	\$11.96
Mar-10	1,383,318	\$16,070,765	\$11.62			
Jun-10	2,325,879	\$26,175,108	\$11.25			
Sep-10	1,574,084	\$20,511,604	\$13.03			
Dec-10	1,733,355	\$22,918,905	\$13.22	7,016,636	\$85,676,382	\$12.21

Source: Statistics New Zealand and New Zealand Seafood Industry Council

Table 13: Pelagic

Date	Quarterly Export Volume (kgs)	Quarterly Export Value (\$NZ)	Quarterly Export Price (\$NZ/kg)	Yearly Export Volume (kgs)	Yearly Export Value (\$NZ)	Yearly Export Price (\$NZ/kg)
Mar-06	46,634,814	\$77,880,591	\$1.67			
Jun-06	38,876,242	\$73,106,567	\$1.88			
Sep-06	18,840,343	\$38,075,069	\$2.02			
Dec-06	15,447,658	\$24,239,266	\$1.57	119,799,057	\$213,301,493	\$1.78
Mar-07	35,397,623	\$54,000,187	\$1.53			
Jun-07	42,953,119	\$65,302,126	\$1.52			
Sep-07	24,799,992	\$42,168,022	\$1.70			
Dec-07	19,252,304	\$27,224,994	\$1.41	122,403,038	\$188,695,329	\$1.54
Mar-08	44,144,575	\$65,019,561	\$1.47			
Jun-08	41,751,177	\$69,200,939	\$1.66			
Sep-08	17,506,425	\$34,316,948	\$1.96			
Dec-08	16,056,648	\$34,177,795	\$2.13	119,458,825	\$202,715,243	\$1.70
Mar-09	25,829,097	\$55,103,681	\$2.13			
Jun-09	34,763,486	\$71,824,966	\$2.07			
Sep-09	20,011,804	\$44,748,501	\$2.24			
Dec-09	18,509,663	\$27,023,161	\$1.46	99,114,050	\$198,700,309	\$2.00
Mar-10	29,986,444	\$50,902,194	\$1.70			
Jun-10	32,622,060	\$82,411,739	\$2.53			
Sep-10	19,754,458	\$47,536,657	\$2.41			
Dec-10	16,894,258	\$27,281,583	\$1.61	99,257,220	\$208,132,173	\$2.10

Source: Statistics New Zealand and New Zealand Seafood Industry Council

Table 13a: Squid

Date	Quarterly Export Volume (kgs)	Quarterly Export Value (\$NZ)	Quarterly Export Price (\$NZ/kg)	Yearly Export Volume (kgs)	Yearly Export Value (\$NZ)	Yearly Export Price (\$NZ/kg)
Mar-06	24,782,128	\$48,088,332	\$1.94			
Jun-06	24,520,887	\$51,199,365	\$2.09			
Sep-06	4,744,382	\$11,060,231	\$2.33			
Dec-06	2,794,210	\$7,696,882	\$2.75	56,841,607	\$118,044,810	\$2.08
Mar-07	12,350,846	\$21,094,936	\$1.71			
Jun-07	28,886,764	\$41,232,204	\$1.43			
Sep-07	12,359,572	\$15,633,983	\$1.26			
Dec-07	3,539,906	\$7,597,303	\$2.15	57,137,088	\$85,558,426	\$1.50
Mar-08	13,336,734	\$17,270,085	\$1.29			
Jun-08	26,803,929	\$38,542,746	\$1.44			
Sep-08	4,431,843	\$9,746,690	\$2.20			
Dec-08	1,867,366	\$5,519,723	\$2.96	46,439,872	\$71,079,244	\$1.53
Mar-09	4,935,585	\$9,242,417	\$1.87			
Jun-09	25,014,178	\$46,948,605	\$1.88			
Sep-09	6,577,302	\$14,893,467	\$2.26			
Dec-09	1,365,685	\$4,225,850	\$3.09	37,892,750	\$75,310,339	\$1.99
Mar-10	4,867,889	\$11,168,169	\$2.29			
Jun-10	15,992,257	\$46,224,918	\$2.89			
Sep-10	6,918,162	\$24,517,860	\$3.54			
Dec-10	1,190,692	\$5,529,806	\$4.64	28,969,000	\$87,440,753	\$3.02

Source: Statistics New Zealand and New Zealand Seafood Industry Council

Table 13b: Jack Mackerel

Date	Quarterly Export Volume (kgs)	Quarterly Export Value (\$NZ)	Quarterly Export Price (\$NZ/kg)	Yearly Export Volume (kgs)	Yearly Export Value (\$NZ)	Yearly Export Price (\$NZ/kg)
Mar-06	9,117,653	\$11,231,010	\$1.23			
Jun-06	4,834,622	\$6,495,961	\$1.34			
Sep-06	8,520,053	\$11,646,302	\$1.37			
Dec-06	5,275,579	\$6,303,537	\$1.19	27,747,907	\$35,676,810	\$1.29
Mar-07	7,863,944	\$11,359,970	\$1.44			
Jun-07	4,108,697	\$5,797,160	\$1.41			
Sep-07	5,092,384	\$6,567,399	\$1.29			
Dec-07	8,133,938	\$8,812,803	\$1.08	25,198,963	\$32,537,332	\$1.29
Mar-08	11,240,152	\$13,918,817	\$1.24			
Jun-08	5,450,859	\$6,878,842	\$1.26			
Sep-08	6,745,834	\$11,336,631	\$1.68			
Dec-08	9,646,867	\$19,204,609	\$1.99	33,083,712	\$51,338,899	\$1.55
Mar-09	8,941,545	\$18,565,412	\$2.08			
Jun-09	4,185,725	\$6,719,179	\$1.61			
Sep-09	6,347,742	\$10,380,462	\$1.64			
Dec-09	8,176,883	\$10,263,379	\$1.26	27,651,895	\$45,928,432	\$1.66
Mar-10	10,003,700	\$15,189,144	\$1.52			
Jun-10	5,913,011	\$8,547,166	\$1.45			
Sep-10	6,719,501	\$9,936,806	\$1.48			
Dec-10	6,991,783	\$9,029,281	\$1.29	29,627,995	\$42,702,397	\$1.44

Source: Statistics New Zealand and New Zealand Seafood Industry Council

Table 13c: Blue Mackerel

Date	Quarterly Export Volume (kgs)	Quarterly Export Value (\$NZ)	Quarterly Export Price (\$NZ/kg)	Yearly Export Volume (kgs)	Yearly Export Value (\$NZ)	Yearly Export Price (\$NZ/kg)
Mar-06	1,456,243	\$1,561,126	\$1.07			
Jun-06	763,638	\$1,100,069	\$1.44			
Sep-06	2,114,785	\$4,317,035	\$2.04			
Dec-06	3,614,202	\$5,217,985	\$1.44	7,948,868	\$12,196,215	\$1.53
Mar-07	2,181,990	\$2,823,371	\$1.29			
Jun-07	548,277	\$829,920	\$1.51			
Sep-07	1,513,552	\$2,640,042	\$1.74			
Dec-07	3,186,931	\$3,827,906	\$1.20	7,430,750	\$10,121,239	\$1.36
Mar-08	3,474,034	\$4,145,398	\$1.19			
Jun-08	1,626,659	\$1,903,404	\$1.17			
Sep-08	1,639,832	\$2,953,551	\$1.80			
Dec-08	1,274,531	\$1,850,211	\$1.45	8,015,056	\$10,852,564	\$1.35
Mar-09	1,300,948	\$2,424,564	\$1.86			
Jun-09	341,991	\$677,810	\$1.98			
Sep-09	2,186,435	\$3,975,933	\$1.82			
Dec-09	4,160,922	\$4,928,260	\$1.18	7,990,296	\$12,006,567	\$1.50
Mar-10	3,446,083	\$4,084,621	\$1.19			
Jun-10	2,451,011	\$3,063,357	\$1.25			
Sep-10	2,015,633	\$3,637,712	\$1.80			
Dec-10	1,055,955	\$1,679,342	\$1.59	8,968,682	\$12,465,032	\$1.39

Source: Statistics New Zealand and New Zealand Seafood Industry Council

Table 13d: Barracouta

Date	Quarterly Export Volume (kgs)	Quarterly Export Value (\$NZ)	Quarterly Export Price (\$NZ/kg)	Yearly Export Volume (kgs)	Yearly Export Value (\$NZ)	Yearly Export Price (\$NZ/kg)
Mar-06	4,528,248	\$5,061,770	\$1.12			
Jun-06	5,275,120	\$6,005,914	\$1.14			
Sep-06	2,909,369	\$3,458,273	\$1.19			
Dec-06	3,679,971	\$4,446,575	\$1.21	16,392,708	\$18,972,532	\$1.16
Mar-07	3,797,266	\$4,754,063	\$1.25			
Jun-07	5,480,742	\$7,216,692	\$1.32			
Sep-07	4,938,891	\$6,102,741	\$1.24			
Dec-07	3,698,516	\$5,001,042	\$1.35	17,915,415	\$23,074,538	\$1.29
Mar-08	4,956,776	\$6,761,989	\$1.36			
Jun-08	4,524,472	\$7,752,644	\$1.71			
Sep-08	4,131,292	\$7,404,774	\$1.79			
Dec-08	3,176,308	\$6,792,004	\$2.14	16,788,848	\$28,711,411	\$1.71
Mar-09	5,082,698	\$8,892,144	\$1.75			
Jun-09	4,121,944	\$6,787,415	\$1.65			
Sep-09	4,329,401	\$6,424,562	\$1.48			
Dec-09	3,768,463	\$5,440,922	\$1.44	17,302,506	\$27,545,043	\$1.59
Mar-10	5,666,880	\$8,546,360	\$1.51			
Jun-10	4,752,895	\$6,832,181	\$1.44			
Sep-10	3,783,029	\$4,923,686	\$1.30			
Dec-10	3,894,191	\$4,893,567	\$1.26	18,096,995	\$25,195,794	\$1.39

Source: Statistics New Zealand and New Zealand Seafood Industry Council

Table 13e: Tunas

Date	Quarterly Export Volume (kgs)	Quarterly Export Value (\$NZ)	Quarterly Export Price (\$NZ/kg)	Yearly Export Volume (kgs)	Yearly Export Value (\$NZ)	Yearly Export Price (\$NZ/kg)
Mar-06	6,750,542	\$11,938,353	\$1.77			
Jun-06	3,481,975	\$8,305,258	\$2.39			
Sep-06	551,754	\$7,593,228	\$13.76			
Dec-06	83,696	\$574,287	\$6.86	10,867,967	\$28,411,126	\$2.61
Mar-07	8,712,318	\$12,874,079	\$1.48			
Jun-07	3,620,749	\$8,855,570	\$2.45			
Sep-07	665,950	\$10,248,662	\$15.39			
Dec-07	453,995	\$1,298,692	\$2.86	13,453,012	\$33,277,003	\$2.47
Mar-08	10,851,341	\$22,052,259	\$2.03			
Jun-08	3,013,137	\$13,164,400	\$4.37			
Sep-08	418,050	\$2,327,106	\$5.57			
Dec-08	81,818	\$756,533	\$9.25	14,364,346	\$38,300,298	\$2.67
Mar-09	5,508,286	\$15,253,303	\$2.77			
Jun-09	1,010,857	\$9,472,615	\$9.37			
Sep-09	538,850	\$8,647,267	\$16.05			
Dec-09	1,026,971	\$2,042,362	\$1.99	8,084,964	\$35,415,547	\$4.38
Mar-10	5,932,955	\$11,137,598	\$1.88			
Jun-10	3,411,068	\$16,439,781	\$4.82			
Sep-10	294,688	\$4,179,606	\$14.18			
Dec-10	3,757,492	\$6,106,663	\$1.63	13,396,203	\$37,863,648	\$2.83

Source: Statistics New Zealand and New Zealand Seafood Industry Council