



## Quarterly Report

# FISHERIES AND AQUACULTURE PRODUCTION AND TRADE

PERIOD ENDING JUNE 2010

### OVERVIEW

- a Total landings from New Zealand wild fisheries in the year ended June 2010 increased 2.9% to 433 thousand tonnes compared to the year ended June 2009. Lower catches of inshore finfish was offset by higher catches of inshore shellfish, deepwater (southern blue whiting) and pelagics (tunas and blue mackerel).
- a The total volume of exports of seafood products in the year ended June 2010 increased by 6.8% to 291 thousand tonnes compared to the year ended June 2009.
- a The total value of exports of seafood products in the year ended June 2010 decreased by 3.5% to \$1.4 billion compared to the year ended June 2009.
- a The continuing strength of the Australian and Chinese economies has assisted demand for New Zealand seafood from these markets. Although the Chinese market is not necessarily the end market for the seafood exported there. Demand elsewhere was depressed due to soft markets in Europe. Growth forecasts for the US economy have been further downgraded and consumer demand has weakened.
- a The outlook is for continuing demand growth in Asia and Australia. Demand in other markets is expected to be restrained, with ongoing risks in

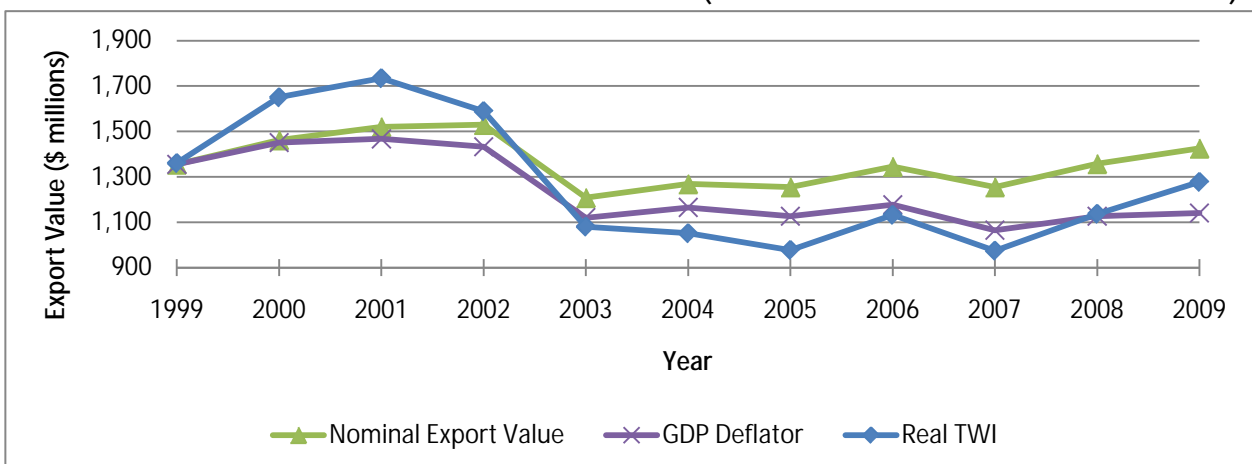
economies of European countries and those with high debt to Gross Domestic Product (GDP) ratios.

### OPERATING ENVIRONMENT

The second quarter of 2010 has seen the recovery from the 2008/09 recession slow in New Zealand and the rest of the world. Forecasts are for the rate of economic growth in the economies of New Zealand's major trading partners to slow in the next 18 months. However, the economies of our important markets for seafood, Australia and Hong Kong/China, are forecasted to continue to grow (at a faster rate than NZ's other trade partners).

Debt concerns (public debt greater than 50% of GDP) around some of New Zealand's trading partners have driven down spending in these economies and thus affected the demand for seafood products. This is especially the case in Europe. Growth forecasts in the US have been revised down and economic growth is forecast to be a rate similar to New Zealand (2.1% in 2010 and 1.4% in 2011). While the Chinese economy is forecast to grow at 8.5 to 9.5% over the next few years, the Chinese government has reduced the amount of its capital available for investment. These are indicators that the recovery from the global financial crisis has not been as robust as first thought and governments are taking a cautious approach to spending.

FIGURE 1: ANNUAL EXPORT VALUES: NOMINAL AND REAL (GDP DEFLATOR & TRADE WEIGHTED INDEX)



Certain markets for fish are still feeling the effects of the recession. Markets in Southern Europe (especially Spain) and the United Kingdom have been difficult and values for deepwater species (hoki and hake) have been slow to recover.

Exchange rates are an important driver of revenue and profits (in \$NZ) for the seafood sector. The AUS\$/NZ\$ exchange rate has fallen from AUS\$0.90 to around AUS\$0.81 over the past 4 years, which has improved returns from sales to Australia. NZIER forecast a slight depreciation in the exchange rate over the year to June 2011, followed by further depreciation to between AUS\$0.79 to AUS\$0.77 over following years.

The NZ\$/US\$ exchange rate has remained stable around \$0.70 in the second quarter of 2010. NZIER forecast a sideways movement of the \$NZ against the \$US to around US\$0.69 in 2011 and 2012. Thereafter the long-term average may be closer to US\$0.64 than to US\$0.60. This suggests a difficult working environment over the long term for seafood exporters to US markets and to markets denominated in \$US.

A primary determinant of the cost of catching fish and getting it to markets, the diesel price, began to increase from historic levels in the last three quarters of the June 2010 year. The retail price for diesel sold in New Zealand increased by 19% from mid-October 2009 to \$1.19 a litre at the end of June 2010. This price is still substantially lower than the high prices in mid 2008 (see annex, figure 1).

The costs of the Emission Trading Scheme (ETS) which came into effect on 1 July 2010 have been added to diesel prices (estimated at \$0.03 per litre). It should be noted that the fishing industry, through quota owners, have been allocated 700,000 New Zealand Units (NZUs) to offset any loss to quota value from the ETS.

## LANDINGS AND EXPORTS

### Landings

Total wild landings for the year to June 2010 were 432 thousand tonnes, up 2.9% on 2009 but down 5.9% on 2008. The species grouping contributions to landings are shown in Table 1.

TABLE 1: ANNUAL LANDINGS VOLUMES

	Jun 2010 Year (tonnes)	Change from Jun 2009 Year (%)
Inshore Finfish	46,988	-0.48%
Deepwater	180,869	3.70%
Inshore Shellfish	3,950	11.33%
Aquaculture	No data	No data
Pelagics	135,941	4.86%
<b>Total Landings</b>	<b>432,583</b>	<b>2.93%</b>

### Exports

While the volume of exports was up by 6.8% in the year ending June 2010 from the year ending June 2009, the value of exports dropped by 3.5% over the same period. This drop in export value was caused by a significant decrease in the export value of the deepwater species (down 8.1%) and aquaculture species (down 17.7%) from the year ending June 2009. The individual species that contributed to these export value decreases are:

- a Deepwater: Hake (down 23.3%), Scampi (down 17.6%), Hoki (down 10.2%), Ling (down 7.9%) and Orange roughy (down 4.8%)
- a Aquaculture: Mussels (down 28.9%)

FIGURE 2: ANNUAL EXPORT PRICES: NOMINAL AND REAL (GDP DEFLATOR & TRADE WEIGHTED INDEX)

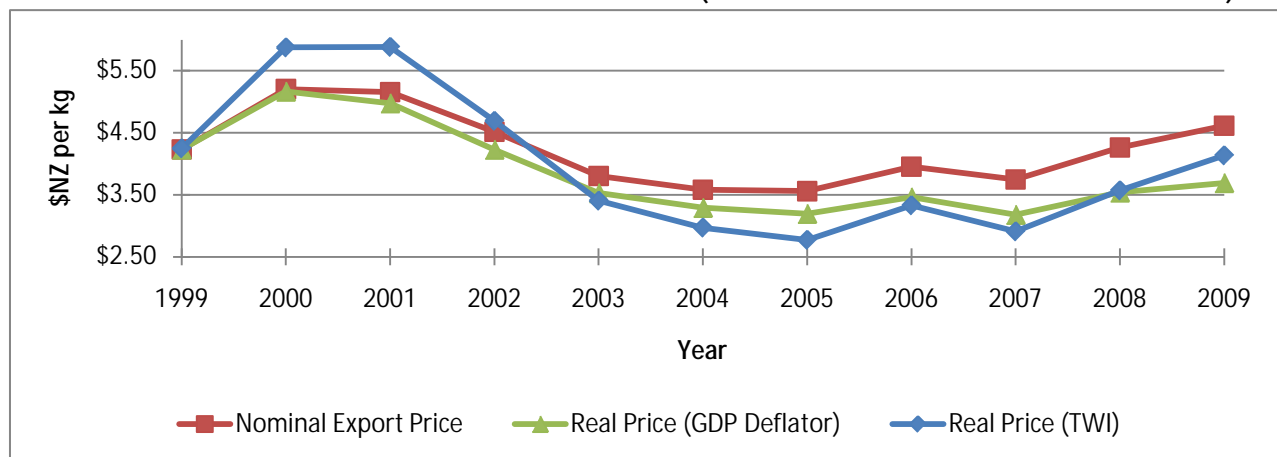
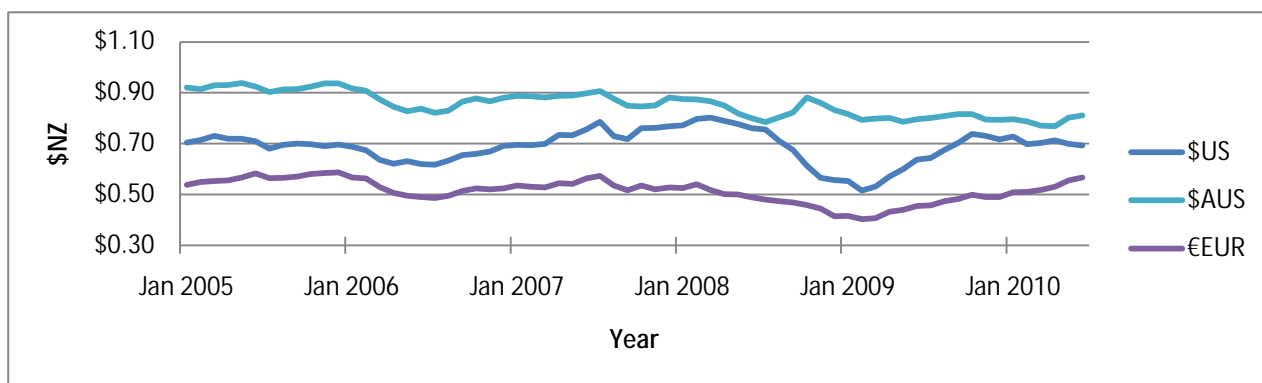


FIGURE 3: QUARTERLY EXCHANGE RATE VALUES



The higher \$NZ against the Euro and \$US contributed to the drop in export value. However, another factor contributing to the decrease in export value was the drop in the volume of orange roughy exported (down 17.7%).

While the drop in orange roughy mirrors the decreasing TACC for orange roughy (ORH3B TACC cut by slightly over 2000 tonnes over the past two years). Higher prices in the United States have helped to soften the impact of the decrease in volume of orange roughy being exported.

The fall in the export value from the other deepwater species and mussels suggests a drop in the per unit value as:

- a The volume of hake exported increased by 24.8% from the year ending June 2009.
- a The volume of scampi exported decreased by 3.6% from the year ending June 2009.
- a The volume of hoki exported decreased by 0.3% from the year ending June 2009.
- a The volume of ling exported increased by 1% from the year ending June 2009.
- a The volume of mussels exported increased by 2.7% from the year ending June 2009.

Spain, which is the largest export market for NZ hake has seen the export per kilogram value drop from a high of \$10.46/kg in March 2009 to \$4.32/kg in June 2010.

The strong \$NZ has decreased export revenue from hake even while the export volume has increased.

Similarly, the US, which is the largest export market for NZ mussels has seen the export per kilogram value drop from a high of \$8.38/kg in December 2008 to \$3.90/kg in March 2010. The value has increased in the last quarter to \$4.41/kg. However, the strong \$NZ has decreased export revenue from mussels even while export volumes remain steady.

#### DEEPWATER

Major species for export in this group include (in order of export value) hoki, orange roughy, ling, southern blue whiting, hake, oreo dory and scampi.

Key variations in export value between the year ending June 2010 and the year ending June 2009 are:

- a **Southern blue whiting** up 15.1%
- a **Oreo dory** up 5.3%
- a **Hake** down 23.3%
- a **Scampi** down 17.6%
- a **Hoki** down 10.2%
- a **Ling** down 7.9%
- a **Orange roughy** down 4.8%

The total export value of hoki, orange roughy, ling, southern blue whiting, hake, oreo dory and scampi was

TABLE 2: ANNUAL EXPORT VOLUMES AND VALUES

	Jun 2010 Year (tonnes)	Change from Jun 2009 Year (%)	Jun 2010 Year (millions)	Change from Jun 2009 Year (%)
Inshore Finfish	15,650	6.17%	\$108.4	-0.77%
Deepwater	75,782	8.82%	\$327.6	-8.08%
Inshore Shellfish	3,781	17.69%	\$255.8	5.24%
Aquaculture	41,671	7.54%	\$250.7	-17.69%
Pelagics	101,130	7.41%	\$205.1	4.94%
<b>Total Exports</b>	<b>290,537</b>	<b>6.78%</b>	<b>\$1,402.3</b>	<b>-3.51%</b>

\$327.6M for the year ending June 2010 (28.2% of wild catch exports).

Hoki is the most important deepwater export species earning \$145.6M in export revenue during the year ending June 2010. This is down from \$162.2M for the year ending June 2009. Australia accounted for 35.4% of this revenue with China (19.4%), France (13%) and Germany (11.9%) being the other major markets. The export revenue for the year to June 2010 is down for China and Germany and up for Australia and France from the year to June 2009.

Exports earnings for the year to June 2010 for orange roughy (down \$2.5M), ling (down \$3.2M), scampi (down \$3.3M) and hake (down \$8.3M) were lower than the year to June 2009. Southern blue whiting (up \$4M) and oreo dory (up \$1 M) both improved between 2009 and 2010.

## PELAGICS

Pelagic species have been treated separately in this report particularly as these species are more susceptible to high degrees of variation in catch from year to year. The main pelagic species by value are squid, jack mackerel, the tunas, barracouta and blue mackerel.

Key variations in export value between the year ending June 2010 and the year ending June 2009 are:

- a **Blue mackerel** up 103%
- a **Tunas** up 37.6%
- a **Squid** up 7.1%
- a **Barracouta** down 8.8%
- a **Jack mackerel** down 20.5%

The total export value for this group for the year ending June 2010 was \$205.1 million – 17.6% of wild catch exports. The export value of this group increased by 4.9% from the year ending June 2009.

Products from the pelagic species are exported to over 100 countries, with the key markets (by value) being China (16.6%), Japan (12.8%), Australia (8.3%), Korea (7.8%) and Spain (3.8%).

Squid was the highest export earner making \$76.5M in export revenue in the year ending June 2010. China accounted for 24.6% of this value, with Korea (20%), Australia (14.1%), Greece (11.3%) and Spain (3.3%) being the other major markets. Squid export earnings were up \$5M from the year ending June 2009. Squid export earnings to China increased by just under \$6M between 2009 and 2010, and earnings from Korea

increased by just under \$5.5M over the same period. However, export earnings for Spain decreased by just under \$5M during the same period.

Mackerels (blue and jack) together made \$60.4M in the year ending June 2010, down \$3.3M on the year ending June 2009. Export earnings from blue mackerel increased by 103% (up \$8M) while export earnings for jack mackerel dropped 20.5% (down \$11M) over the same period. Tunas contributed \$38.3M in export value in the year ending June 2010 made up from bluefin (38.1%), skipjack (28.7%), albacore (18.1%), and big eye (8.8%). Over the same period, barracouta made \$27.2M.

## INSHORE FINFISH

Major species for export by value in this group include (in order of export value) snapper, bluenose, flatfish, small sharks, red cod, groper and john dory.

Most key inshore species TACCs are fully caught. Bluenose has had significant TACC cuts in 2008 but is still fishing below TACC at 87% overall and 79% in BNS1 (62% of old TACC).

Export value for the main inshore finfish species in the year ending June 2010 was \$108.4M (9.3% of wild caught fish). The total export value of this group has increased 5% over the last 4 years, while total export volumes have decreased by 6.7%.

Snapper is the most important export in this group worth \$33.6M in the year ending June 2010, largely as chilled gutted whole fish. Australia is the key market taking 67% of exports. Other important markets are US (13.2%) and Italy (8.1%). Both volume and price have been rising over recent years, with strongest trends in the Australian market. Traditional markets in Japan and Korea provided only 5% of the total export revenue in the year ending June 2010.

Bluenose is almost exclusively exported to Australia and US (74.3% and 25.2% respectively) – worth \$12.4M in the year ending June 2010. While the Australian market has remained firm, both prices and volumes to the US decreased at the end of 2009 but there has been a rebound in the first half of 2010.

These inshore fish are also popular in the domestic market, which takes about a third of the snapper catch. The tarakihi catch is almost the same volume as snapper but very little is exported – around 5%. This is a key inshore finfish in the domestic market.

Flatfish includes a number of species managed as a group under the QMS, including soles and flounder.

Export value for the year ending June 2010 for this group was \$10.7M (average for last 4 years was \$11.5M).

School shark was the most important shark species in terms of export value at \$8.3M in the year ending June 2010. Total export value of all the shark species during this period was \$24.8 million.

John dory, groper, and red cod earned around \$5M each in exports for the year ending June 2010 and trevally about \$3.5M.

## INSHORE SHELLFISH

Rock lobster is the highest value seafood export, grossing over \$206.1M in the year ending June 2010. Most of this value is from live exports into Hong Kong (88.1%), with Japan (3.6%), USA (0.9%), and Singapore (0.9%) the other significant markets. Hong Kong values increased strongly in 2008 from around \$48/kg to peak at \$93/kg in March 2009. The value had fallen back to \$64/kg in December 2009 but there has been an increase to \$84/kg over the last 6 months. Returns from this species are currently highly dependent on this single market.

Paua (abalone) exports brought in \$49.7M in the year ending June 2010 – down a little on the four year average of \$52M. This is spread across Hong Kong (53.6%), Singapore (35.4%), Australia (5%) and others (6.5%). Values have been steady across markets over the past four years averaging \$71/kg until the second half of 2009 when prices dropped to \$47/kg. Values have increased slowly since then to \$62/kg.

Scallops are a minor export earning \$0.75M in the year ending June 2010. This is down from \$3M in the year ending June 2009. This decrease was caused by a decrease in demand from Australia and Vietnam. The biggest export markets for scallops are France (34.8% by value), French Polynesia (24%) and Cook Islands (10.1%).

Dredge oysters are mainly harvested from Foveaux Strait. Domestic demand for Foveaux Strait oysters exceeds supply, therefore, none are exported. Domestic prices are driven by the high demand and the value of the catch is somewhere around \$12M per annum. The catch of Foveaux Strait oysters for 2009 was 838 tonnes, or 8.22 million oysters. This represents a degree of voluntary restraint by the fleet in the interests of the stock (the TACC is 1526 tonnes) following years of disease issues in the fishery. A further 43 tonnes of dredge oysters was taken from other areas – mainly Nelson.

## AQUACULTURE

Currently aquaculture export species are limited to green lipped mussels, salmon and oysters. Export volume of 41,671 tonnes brought \$250.7M in export earnings during the year to June 2010. Of this, green lipped mussels accounted for \$162.6 M (down 28.9% on the year ending June 2009), salmon 70.4M (up 21.4% on the year ending June 2009) and oysters \$17.7M (down 1.4% on the year ending June 2009).

Key markets for green lipped mussels are United States (28.6% by value), Australia (11.1%), Spain (8.6%) and Korea (6.9%). Salmon went to Japan (33.5%), Australia (31.3%), United States (18.1%) and Taiwan (13.5%). While the US is the most important market for green lipped mussels, export earnings were down \$25.5M (35.4%) from 2009. Green lipped mussel export earnings were also down from 2009 for Korea (down 7.5M), Hong Kong (down 3.65M) and Australia (down 3.35M).

Oysters were exported to Australia (54.6% by value), French Polynesia (8.9%), Hong Kong (7.3%) and New Caledonia (6.8%).

---

## NOTES

1. Value at first landing data – standard for OECD figures – is not available for the New Zealand catch.
2. The nominal export value was deflated by using the implicit price deflator for gross national expenditure produced by Stats NZ to produce the real export value (inflation adjusted figure).
3. Data for aquaculture species harvest volumes and value are not available at present.
4. All export statistics are sourced from Statistics New Zealand and the New Zealand Seafood Industry Council.
5. All landings and production information are sourced from the Ministry of Fisheries. All landings information is in greenweight, which is whole fish prior to any processing or cutting.
6. Table totals do not calculate from the category totals as categories only include key species. Totals reflect all recorded landings and exports.
7. Export values are NZ\$ free on board (FOB), which is the value of goods at New Zealand ports before export and includes cost of transport to port.

## REFERENCES

*Quarterly Predictions September 2010*, New Zealand Institute for Economic Research, 25/08/2010

## STATISTICAL ANNEX

**Table 1: Annual Quota Value (\$ million) for the Top 40 QMS species (30 September years)**

Species	2004	2005	2006	2007	2008	2009
<b>TOTAL (all QMS species)</b>	<b>3,865.7</b>	<b>3,729.7</b>	<b>3,796.1</b>	<b>3,824.5</b>	<b>3,939.4</b>	<b>4,016.9</b>
Hoki	695.0	541.0	626.8	692.8	729.6	814.6
Rock lobster (CRA and PHC)	644.3	584.9	569.9	621.3	634.4	770.5
Paua	354.9	378.7	365.6	390.0	360.8	304.3
Orange roughy	324.4	299.7	276.9	250.3	319.2	282.0
Snapper	282.4	257.6	226.4	252.2	279.9	262.5
Ling	195.6	219.5	196.9	231.4	234.7	246.2
Hake	147.3	123.4	187.7	141.0	155.7	135.5
Scampi	...	115.7	127.5	119.4	131.4	132.3
Arrow squid	240.3	137.9	297.5	169.6	108.5	116.5
Silver warehou	71.3	70.9	62.7	82.5	83.3	82.6
Tarakihi	65.4	61.9	93.6	78.9	85.6	74.9
Oreo	67.5	67.5	72.3	84.6	86.5	74.4
Southern blue whiting	52.3	58.6	62.0	52.8	63.7	74.3
Jack mackerel	99.5	58.0	27.0	26.5	27.7	53.6
Bluenose	43.4	50.3	43.0	57.8	53.7	43.3
Barracouta	36.9	43.3	41.1	37.7	41.6	40.5
Stargazer	29.3	25.6	25.2	24.1	28.3	39.3
Blue cod	38.7	45.1	56.6	46.0	41.1	38.7
Oysters dredge (OYS and OYU)	29.5	28.6	23.7	22.8	26.0	36.5
School shark	41.9	50.0	44.6	45.1	40.1	34.9
Alfonsino & long-finned beryx	27.8	29.3	29.5	36.0	30.9	30.9
Scallop	47.8	18.2	36.1	30.9	30.5	27.7
Gurnard	16.6	13.5	13.9	15.7	20.7	27.3
Hapuku & bass	24.9	32.3	35.6	34.5	29.1	21.7
Blue warehou	20.9	15.8	13.8	11.3	19.3	19.3
Rig	22.4	21.2	13.9	17.8	20.8	18.7
Flatfish	18.0	18.1	16.7	14.9	20.3	17.6
White Warehou	13.0	13.9	8.2	5.2	15.3	16.8
Southern bluefin tuna	..	48.6	14.1	10.6	12.7	15.4
Trevally	19.7	16.6	15.3	12.9	19.1	14.8
John dory	10.8	8.7	10.8	11.5	14.8	13.7
Blue mackerel	18.3	28.8	14.8	13.7	13.8	13.2
Red cod	71.4	39.6	14.0	21.1	12.7	13.1
Green-lipped mussel	...	10.1	10.5	12.1	12.0	12.2
Gemfish	6.6	6.5	11.7	10.2	10.8	7.7
Kahawai	...	9.8	6.0	5.5	7.1	7.1
Elephant fish	8.1	8.0	10.2	15.2	16.2	6.9
Spiny dogfish	...	4.7	6.7	8.0	4.3	6.1
Kingfish	3.3	4.0	2.9	4.0	3.6	5.4
Kina	4.5	4.7	8.2	8.2	5.5	4.9

Source: Statistics New Zealand

Table 2: Annual Landings of Key Species: 2010, 2009 (30 June years)

	June 2010 Year (kgs)	June 2009 Year (kgs)	Change from June 2009 Year (%)
<b>Inshore Finfish</b>	<b>46,987,565</b>	<b>47,212,979</b>	<b>-0.48%</b>
Snapper	6,089,866	6,522,988	-6.64%
Bluenose	2,072,066	2,265,161	-8.52%
John Dory	631,906	694,961	-9.07%
Tarakihi	5,788,043	5,488,753	5.45%
Blue Cod	2,267,382	2,294,528	-1.18%
<b>Deepwater</b>	<b>180,869,487</b>	<b>174,412,268</b>	<b>3.70%</b>
Hoki	92,566,578	93,899,726	-1.42%
Oreo Dory	17,540,079	14,633,485	19.86%
Orange Roughy	10,434,241	12,531,497	-16.74%
Southern Blue Whiting	39,496,329	31,949,997	23.62%
Scampi	616,693	582,179	5.93%
Hake	8,193,045	6,961,427	17.69%
Ling	12,028,941	13,853,957	-13.17%
<b>Inshore Shellfish</b>	<b>3,949,552</b>	<b>3,547,751</b>	<b>11.33%</b>
Rock Lobster	2,950,197	2,583,087	14.21%
Paua	999,627	964,634	3.63%
<b>Aquaculture</b>	<b>N/A</b>	<b>N/A</b>	<b>N/A</b>
Green Lipped Mussels	N/A	N/A	N/A
Oysters	N/A	N/A	N/A
Salmon and Salmonidae	N/A	N/A	N/A
<b>Pelagics</b>	<b>135,940,516</b>	<b>129,641,356</b>	<b>4.86%</b>
Squid	32,225,682	44,021,041	-26.79%
Jack Mackerel	46,777,254	44,524,785	5.06%
Blue Mackerel	14,291,482	5,605,768	154.94%
Barracouta	31,000,661	27,623,244	12.23%
Tunas	11,093,858	7,471,427	48.48%
<b>Total Landings</b>	<b>432,582,572</b>	<b>429,652,458</b>	<b>2.93%</b>

Source: Ministry of Fisheries

**Table 3: Top Ten exports by value during the 2009 calendar year**

<b>Species</b>	<b>Export Value (FoB)</b>
Mussels	\$202,466,693
Rock Lobster	\$184,231,379
Hoki	\$152,464,610
Squid	\$75,302,629
Salmons (all)	\$60,781,336
Orange Roughy	\$51,029,583
Paua	\$47,934,184
Fish meal (unfit for human consump.)	\$47,236,863
Mackerel, Jack	\$45,928,432
Other preparations	\$43,596,046

Source: New Zealand Seafood Industry Council (SeaFIC)

**Table 4: Top Ten exports by volume during the 2009 calendar year**

<b>Species</b>	<b>Export Volume (kgs)</b>
Squid	37,891,500
Hoki	34,858,472
Mussels	33,842,226
Mackerel, Jack	27,651,895
Fish meal (unfit for human consump.)	22,017,418
Southern Blue Whiting	19,119,981
Barracouta	17,302,506
Tunas (all)	8,084,964
Mackerel, Blue	7,814,142
Ling	6,529,710

Source: New Zealand Seafood Industry Council (SeaFIC)



Table 5: Annual chain-volume series (GDP) expressed in 1995/96 prices<sup>(1)</sup>

	Fishing (\$million)	Annual Percentage Change (%)	Total gross domestic product (\$million)	Fishing Percentage of GDP (%)
<i>Series ref: SNC</i>	<i>S1RB01ACT4</i>		<i>S1RB01</i>	
1990	253	-3.80%	80,129	0.32%
1991	265	4.74%	80,162	0.33%
1992	262	-1.13%	79,105	0.33%
1993	276	5.34%	79,984	0.35%
1994	253	-8.33%	85,136	0.30%
1995	256	1.19%	89,675	0.29%
1996	283	10.55%	93,420	0.30%
1997	275	-2.83%	96,666	0.28%
1998	271	-1.45%	98,335	0.28%
1999	275	1.48%	98,842	0.28%
2000	292	6.18%	104,096	0.28%
2001	272	-6.85%	106,553	0.26%
2002	264	-2.94%	110,407	0.24%
2003	231	-12.50%	115,829	0.20%
2004	221	-4.33%	120,813	0.18%
2005	210	-4.98%	125,361	0.17%
2006	218	3.81%	129,079	0.17%
2007	208	-4.59%	131,438	0.16%
2008	197	-5.29%	135,543	0.15%
2009	190	-3.55%	134,028	0.14%

(1) Year ended 31 March

Source: Statistics New Zealand, Compiled by Industry Development team, Strategy Group, Ministry of Fisheries

Table 6: Registered Vessels

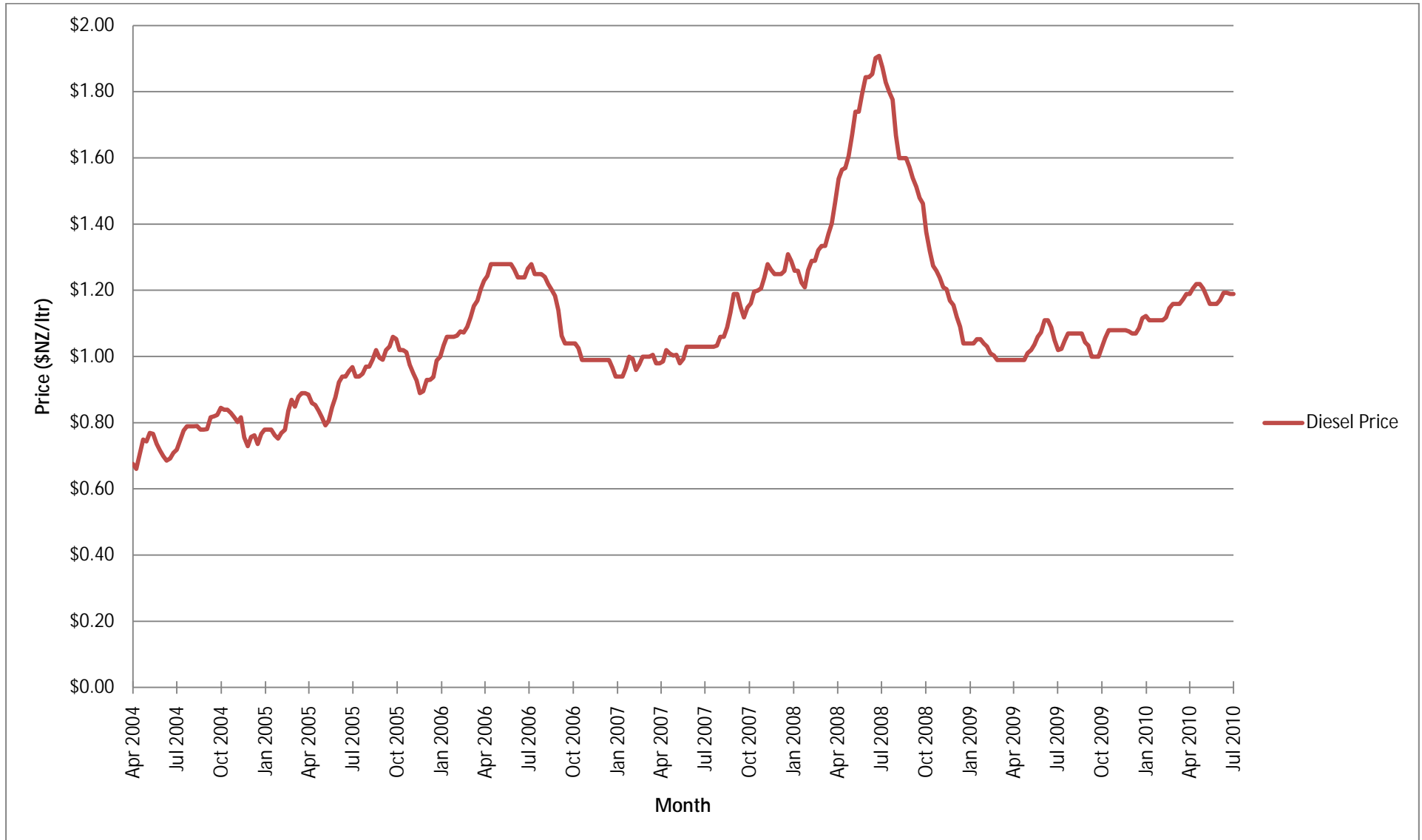
Year	Domestic		Foreign Charter		Grand Total	
	Number of Vessels	Gross Tonnage	Number of Vessels	Gross Tonnage	Number of Vessels	Gross Tonnage
2005	1,383	68,941	32	61,966	1,415	130,907
2006	1,336	66,014	30	59,832	1,366	125,846
2007	1,268	67,605	26	52,517	1,294	120,122
2008	1,241	70,212	23	46,512	1,264	116,725
2009	1,256	70,464	22	42,633	1,278	113,097

Notes:

1. Registered vessels in this table are vessels that were registered as commercial fishing vessels during that year
2. Gross Tonnage is the gross tonnage of the vessel as submitted by the individual/company registering the vessel. It is a unitless index related to a ship's overall internal volume and is calculated based on "the moulded volume of all enclosed spaces of the ship".

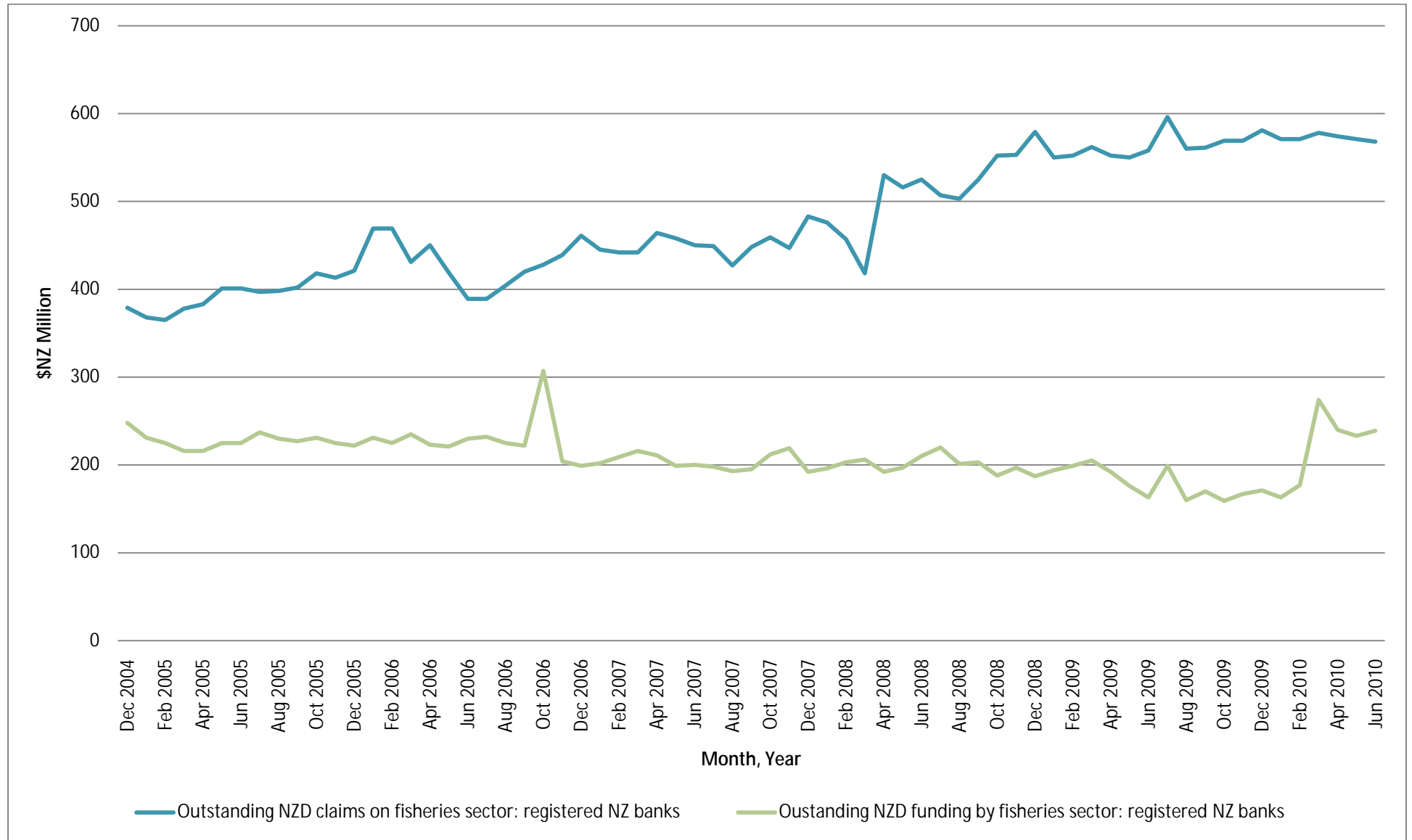
Source: Ministry of Fisheries

Figure 1: Diesel Price



Source: Ministry of Economic Development

Figure 2: Registered banks Deposits by and Claims on the Fisheries Sector



Source: Reserve Bank of New Zealand

Table 7: Quarterly Domestic Fish Prices for all of New Zealand

Year and Quarter		Wet Fish											Other Seafood				
		Tarakihi	Gurnard	Snapper	Sole	Salmon Fillets	Red Cod	Salmon Steaks	Lemon Fish	Monk Fish	Blue Cod	Trevally	Hoki	Salmon, Canned	Tuna, Canned	Mussels, Live	Mussels, Marinated
		\$ per kg											\$ per 210g	\$ per 185g	\$ per kg	\$ per 375g	
2005	Mar	19.01	18.20	28.68	20.97	23.79	12.70	23.26	18.61	18.71	25.64	14.98	11.85	2.08	2.05	3.62	4.63
	Jun	18.87	18.18	28.59	20.61	24.64	12.76	23.62	17.52	18.03	27.63	14.77	12.57	2.17	2.01	3.63	4.61
	Sep	19.41	18.62	28.51	21.11	23.47	13.40	23.84	18.03	18.03	26.71	15.24	10.69	2.15	2.03	3.67	4.58
	Dec	19.47	18.61	29.14	20.02	23.78	13.87	23.41	17.99	18.08	26.56	15.21	..	2.10	1.99	3.67	4.59
2006	Mar	19.70	18.73	29.21	20.82	25.37	13.55	24.25	17.90	18.97	24.76	14.47	..	2.02	1.97	3.64	4.74
	Jun	20.25	20.08	29.97	20.82	25.72	12.91	24.85	17.99	..	..	..	..	..	..	..	..
	Sep	21.34	20.70	31.34	20.50	25.73	13.39	23.99	18.39	..	24.12	..	11.54	2.12	1.96	3.49	4.74
	Dec	21.84	20.94	31.35	20.77	26.23	14.30	25.20	18.88	17.90	27.83	15.20	..	2.20	1.97	3.40	4.69
2007	Mar	21.75	21.02	32.52	20.74	26.41	13.81	24.49	20.37	18.20	..	16.12	..	2.33	1.91	3.32	4.74
	Jun	21.87	21.29	33.20	21.77	27.08	13.84	25.13	19.85	19.35	..	15.79	..	2.41	1.91	3.34	4.70
	Sep	23.44	22.86	34.69	22.28	26.54	13.52	23.12	19.46	20.37	..	..	10.17	2.42	1.85	3.38	4.75
	Dec	24.47	22.75	34.10	21.78	27.53	14.04	23.25	19.43	20.38	..	16.75	..	2.43	1.91	3.21	4.73
2008	Mar	24.49	23.04	34.17	22.34	27.94	14.33	26.31	19.87	21.04	..	15.36	13.36	2.40	1.77	2.91	4.78
	Jun	25.09	24.10	35.27	22.30	27.73	14.61	26.30	19.73	20.36	31.65	16.73	..	2.47	1.87	3.09	4.74
	Sep	26.09	25.05	35.29	24.27	27.93	15.31	25.27	..	..	33.20	..	13.15	2.66	1.97	3.09	4.98
	Dec	26.20	25.33	35.98	23.63	27.61	16.14	25.27	..	..	..	..	..	2.65	2.20	3.22	5.23
2009	Mar	26.77	25.93	36.34	22.36	28.65	15.89	23.09	..	..	34.50	16.28	..	2.68	2.46	2.94	5.14
	Jun	25.37	26.35	37.18	23.54	28.55	15.42	25.55	..	..	34.43	..	..	2.78	2.54	3.20	5.17
	Sep	27.11	26.82	38.51	22.45	28.61	16.22	26.25	23.03	..	..	..	12.93	2.96	2.42	3.29	5.25
	Dec	27.51	26.64	37.87	23.24	27.98	15.83	24.98	22.24	21.56	..	17.21	..	2.82	2.53	3.09	5.33
2010	Mar	26.93	25.77	38.13	22.83	29.28	16.27	28.75	22.34	22.18	33.81	19.92	..	2.73	2.46	3.26	5.26

Source: Statistics New Zealand

**Table 8: Inshore Finfish**

Date	Quarterly Export Volume (kgs)	Quarterly Export Value (\$NZ)	Quarterly Export Price (\$NZ/kg)	Yearly Export Volume (kgs)	Yearly Export Value (\$NZ)	Yearly Export Price (\$NZ/kg)
Mar-06	4,837,835	\$26,120,665	\$5.40			
Jun-06	4,711,183	\$24,989,811	\$5.30			
Sep-06	3,366,320	\$23,862,291	\$7.09			
Dec-06	4,315,707	\$25,995,768	\$6.02			
Mar-07	5,351,009	\$29,878,685	\$5.58			
Jun-07	3,733,321	\$23,517,730	\$6.30	16,766,357	\$103,254,474	\$6.16
Sep-07	2,693,961	\$19,604,354	\$7.28			
Dec-07	3,970,389	\$26,906,020	\$6.78			
Mar-08	4,330,370	\$27,306,273	\$6.31			
Jun-08	3,536,360	\$24,110,141	\$6.82	14,531,080	\$97,926,788	\$6.74
Sep-08	3,396,586	\$22,998,065	\$6.77			
Dec-08	3,851,867	\$28,626,036	\$7.43			
Mar-09	3,873,014	\$31,503,138	\$8.13			
Jun-09	3,619,990	\$26,085,833	\$7.21	14,741,457	\$109,213,072	\$7.41
Sep-09	3,921,482	\$24,975,092	\$6.37			
Dec-09	3,777,300	\$27,974,133	\$7.41			
Mar-10	4,188,551	\$30,134,496	\$7.19			
Jun-10	3,763,166	\$25,292,238	\$6.72	15,650,499	\$108,375,959	\$6.92

Source: Statistics New Zealand and New Zealand Seafood Industry Council

**Table 8a: Snapper**

Date	Quarterly Export Volume (kgs)	Quarterly Export Value (\$NZ)	Quarterly Export Price (\$NZ/kg)	Yearly Export Volume (kgs)	Yearly Export Value (\$NZ)	Yearly Export Price (\$NZ/kg)
Mar-06	1,173,840	\$7,662,780	\$6.53			
Jun-06	897,632	\$6,442,335	\$7.18			
Sep-06	779,279	\$6,025,557	\$7.73			
Dec-06	1,329,973	\$9,288,246	\$6.98			
Mar-07	1,054,371	\$8,148,570	\$7.73			
Jun-07	722,830	\$6,268,493	\$8.67	3,886,453	\$29,730,866	\$7.65
Sep-07	687,402	\$6,003,159	\$8.73			
Dec-07	1,089,309	\$9,804,491	\$9.00			
Mar-08	896,601	\$7,884,382	\$8.79			
Jun-08	706,628	\$6,376,931	\$9.02	3,379,940	\$30,068,963	\$8.90
Sep-08	780,958	\$7,313,172	\$9.36			
Dec-08	1,074,372	\$10,787,963	\$10.04			
Mar-09	1,020,352	\$10,512,400	\$10.30			
Jun-09	832,210	\$7,762,784	\$9.33	3,707,892	\$36,376,319	\$9.81
Sep-09	885,700	\$8,169,374	\$9.22			
Dec-09	1,047,172	\$9,750,971	\$9.31			
Mar-10	887,649	\$8,543,036	\$9.62			
Jun-10	790,256	\$7,140,702	\$9.04	3,610,777	\$33,604,083	\$9.31

Source: Statistics New Zealand and New Zealand Seafood Industry Council

Table 8b: Bluenose

Date	Quarterly Export Volume (kgs)	Quarterly Export Value (\$NZ)	Quarterly Export Price (\$NZ/kg)	Yearly Export Volume (kgs)	Yearly Export Value (\$NZ)	Yearly Export Price (\$NZ/kg)
Mar-06	427,332	\$3,416,304	\$7.99			
Jun-06	317,970	\$3,055,829	\$9.61			
Sep-06	298,557	\$2,856,472	\$9.57			
Dec-06	364,035	\$3,177,292	\$8.73			
Mar-07	433,307	\$4,004,942	\$9.24			
Jun-07	340,653	\$3,536,415	\$10.38	1,436,552	\$13,575,121	\$9.45
Sep-07	278,377	\$2,891,020	\$10.39			
Dec-07	348,743	\$3,919,142	\$11.24			
Mar-08	387,036	\$4,117,570	\$10.64			
Jun-08	326,866	\$3,459,676	\$10.58	1,341,022	\$14,387,408	\$10.73
Sep-08	270,781	\$3,005,625	\$11.10			
Dec-08	333,592	\$4,019,914	\$12.05			
Mar-09	330,058	\$3,958,906	\$11.99			
Jun-09	235,159	\$2,890,194	\$12.29	1,169,590	\$13,874,639	\$11.86
Sep-09	239,449	\$2,755,326	\$11.51			
Dec-09	299,867	\$3,448,328	\$11.50			
Mar-10	331,870	\$3,707,636	\$11.17			
Jun-10	212,057	\$2,526,960	\$11.92	1,083,243	\$12,438,250	\$11.48

Source: Statistics New Zealand and New Zealand Seafood Industry Council

Table 8c: John Dory

Date	Quarterly Export Volume (kgs)	Quarterly Export Value (\$NZ)	Quarterly Export Price (\$NZ/kg)	Yearly Export Volume (kgs)	Yearly Export Value (\$NZ)	Yearly Export Price (\$NZ/kg)
Mar-06	153,048	\$1,438,875	\$9.40			
Jun-06	125,639	\$1,313,105	\$10.45			
Sep-06	144,050	\$1,484,454	\$10.31			
Dec-06	155,612	\$1,582,031	\$10.17			
Mar-07	190,584	\$1,883,270	\$9.88			
Jun-07	120,792	\$1,292,912	\$10.70	611,038	\$6,242,667	\$10.22
Sep-07	118,120	\$1,107,643	\$9.38			
Dec-07	137,250	\$1,343,379	\$9.79			
Mar-08	175,932	\$1,736,936	\$9.87			
Jun-08	98,660	\$1,059,479	\$10.74	529,962	\$5,247,437	\$9.90
Sep-08	101,809	\$1,033,034	\$10.15			
Dec-08	130,956	\$1,506,871	\$11.51			
Mar-09	150,684	\$2,008,706	\$13.33			
Jun-09	91,259	\$1,066,156	\$11.68	474,708	\$5,614,767	\$11.83
Sep-09	76,216	\$875,543	\$11.49			
Dec-09	118,007	\$1,433,389	\$12.15			
Mar-10	169,524	\$1,793,267	\$10.58			
Jun-10	71,950	\$881,387	\$12.25	435,697	\$4,983,586	\$11.44

Source: Statistics New Zealand and New Zealand Seafood Industry Council

Table 8d: Tarakihi

Date	Quarterly Export Volume (kgs)	Quarterly Export Value (\$NZ)	Quarterly Export Price (\$NZ/kg)	Yearly Export Volume (kgs)	Yearly Export Value (\$NZ)	Yearly Export Price (\$NZ/kg)
Mar-06	32,369	\$82,875	\$2.56			
Jun-06	28,399	\$188,868	\$6.65			
Sep-06	45,306	\$309,658	\$6.83			
Dec-06	10,246	\$68,760	\$6.71			
Mar-07	37,348	\$173,791	\$4.65			
Jun-07	30,849	\$149,466	\$4.85	123,749	\$701,675	\$5.67
Sep-07	44,460	\$114,512	\$2.58			
Dec-07	15,419	\$70,228	\$4.55			
Mar-08	12,791	\$70,539	\$5.51			
Jun-08	17,734	\$151,809	\$8.56	90,404	\$407,088	\$4.50
Sep-08	53,571	\$205,497	\$3.84			
Dec-08	10,686	\$111,213	\$10.41			
Mar-09	84,929	\$402,082	\$4.73			
Jun-09	104,778	\$724,630	\$6.92	253,964	\$1,443,422	\$5.68
Sep-09	41,017	\$374,746	\$9.14			
Dec-09	26,103	\$280,082	\$10.73			
Mar-10	36,622	\$413,161	\$11.28			
Jun-10	31,102	\$316,969	\$10.19	134,844	\$1,384,958	\$10.27

Source: Statistics New Zealand and New Zealand Seafood Industry Council

Table 8e: Blue Cod

Date	Quarterly Export Volume (kgs)	Quarterly Export Value (\$NZ)	Quarterly Export Price (\$NZ/kg)	Yearly Export Volume (kgs)	Yearly Export Value (\$NZ)	Yearly Export Price (\$NZ/kg)
Mar-06	707	\$11,399	\$16.12			
Jun-06	10,095	\$121,898	\$12.08			
Sep-06	8,441	\$113,024	\$13.39			
Dec-06	2,065	\$39,318	\$19.04			
Mar-07	25,514	\$197,942	\$7.76			
Jun-07	33,486	\$259,522	\$7.75	69,506	\$609,806	\$8.77
Sep-07	38,292	\$260,679	\$6.81			
Dec-07	44,140	\$344,940	\$7.81			
Mar-08	21,774	\$169,026	\$7.76			
Jun-08	19,748	\$200,770	\$10.17	123,954	\$975,415	\$7.87
Sep-08	21,856	\$199,728	\$9.14			
Dec-08	19,993	\$190,876	\$9.55			
Mar-09	1,453	\$28,292	\$19.47			
Jun-09	16,536	\$142,848	\$8.64	59,838	\$561,744	\$9.39
Sep-09	37,181	\$306,301	\$8.24			
Dec-09	24,998	\$209,785	\$8.39			
Mar-10	1,522	\$28,972	\$19.04			
Jun-10	16,772	\$185,097	\$11.04	80,473	\$730,155	\$9.07

Source: Statistics New Zealand and New Zealand Seafood Industry Council

**Table 9: Deepwater Species**

Date	Quarterly Export Volume (kgs)	Quarterly Export Value (\$NZ)	Quarterly Export Price (\$NZ/kg)	Yearly Export Volume (kgs)	Yearly Export Value (\$NZ)	Yearly Export Price (\$NZ/kg)
Mar-06	12,870,794	\$67,846,629	\$5.27			
Jun-06	12,753,920	\$74,663,419	\$5.85			
Sep-06	23,074,129	\$117,035,531	\$5.07			
Dec-06	26,238,898	\$111,236,350	\$4.24			
Mar-07	14,347,232	\$67,977,656	\$4.74			
Jun-07	13,353,232	\$62,128,167	\$4.65	77,013,491	\$358,377,704	\$4.65
Sep-07	25,348,144	\$100,187,680	\$3.95			
Dec-07	23,004,017	\$99,469,615	\$4.32			
Mar-08	15,376,438	\$74,117,326	\$4.82			
Jun-08	14,652,188	\$64,302,192	\$4.39	78,380,787	\$338,076,813	\$4.31
Sep-08	21,590,029	\$102,406,216	\$4.74			
Dec-08	18,235,062	\$91,480,990	\$5.02			
Mar-09	17,791,189	\$96,818,532	\$5.44			
Jun-09	12,023,398	\$65,667,345	\$5.46	69,639,678	\$356,373,083	\$5.12
Sep-09	20,930,343	\$92,791,353	\$4.43			
Dec-09	25,423,001	\$99,306,978	\$3.91			
Mar-10	13,591,461	\$62,491,818	\$4.60			
Jun-10	15,836,941	\$73,003,456	\$4.61	75,781,746	\$327,593,605	\$4.32

Source: Statistics New Zealand and New Zealand Seafood Industry Council

**Table 9a: Hoki**

Date	Quarterly Export Volume (kgs)	Quarterly Export Value (\$NZ)	Quarterly Export Price (\$NZ/kg)	Yearly Export Volume (kgs)	Yearly Export Value (\$NZ)	Yearly Export Price (\$NZ/kg)
Mar-06	6,438,082	\$25,281,817	\$3.93			
Jun-06	7,870,580	\$35,435,551	\$4.50			
Sep-06	14,584,248	\$52,819,092	\$3.62			
Dec-06	12,410,953	\$40,261,105	\$3.24			
Mar-07	7,739,158	\$31,019,892	\$4.01			
Jun-07	7,303,118	\$29,341,811	\$4.02	42,037,477	\$153,441,900	\$3.65
Sep-07	16,042,595	\$43,560,549	\$2.72			
Dec-07	9,940,859	\$36,566,367	\$3.68			
Mar-08	8,344,846	\$32,255,211	\$3.87			
Jun-08	8,139,069	\$29,383,384	\$3.61	42,467,369	\$141,765,511	\$3.34
Sep-08	12,979,751	\$51,027,345	\$3.93			
Dec-08	9,155,090	\$38,070,507	\$4.16			
Mar-09	8,886,053	\$46,248,216	\$5.20			
Jun-09	5,841,581	\$26,869,499	\$4.60	36,862,475	\$162,215,567	\$4.40
Sep-09	11,022,676	\$43,739,081	\$3.97			
Dec-09	9,108,162	\$35,607,814	\$3.91			
Mar-10	7,399,304	\$29,637,031	\$4.01			
Jun-10	9,230,116	\$36,652,540	\$3.97	36,760,258	\$145,636,466	\$3.96

Source: Statistics New Zealand and New Zealand Seafood Industry Council



Table 9b: Oreo Dory

Date	Quarterly Export Volume (kgs)	Quarterly Export Value (\$NZ)	Quarterly Export Price (\$NZ/kg)	Yearly Export Volume (kgs)	Yearly Export Value (\$NZ)	Yearly Export Price (\$NZ/kg)
Mar-06	1,121,251	\$4,522,285	\$4.03			
Jun-06	1,187,607	\$4,819,829	\$4.06			
Sep-06	1,117,865	\$4,849,059	\$4.34			
Dec-06	1,403,025	\$6,180,742	\$4.41			
Mar-07	1,449,973	\$6,114,749	\$4.22			
Jun-07	1,688,441	\$6,027,130	\$3.57	5,659,304	\$23,171,680	\$4.09
Sep-07	918,238	\$2,415,959	\$2.63			
Dec-07	1,665,255	\$4,841,527	\$2.91			
Mar-08	1,386,714	\$4,257,255	\$3.07			
Jun-08	1,538,996	\$4,897,259	\$3.18	5,509,203	\$16,412,000	\$2.98
Sep-08	1,463,177	\$4,795,258	\$3.28			
Dec-08	950,112	\$4,034,096	\$4.25			
Mar-09	1,641,725	\$5,807,814	\$3.54			
Jun-09	1,109,025	\$4,083,000	\$3.68	5,164,039	\$18,720,168	\$3.63
Sep-09	1,455,474	\$5,570,234	\$3.83			
Dec-09	1,110,269	\$4,196,929	\$3.78			
Mar-10	965,253	\$5,291,629	\$5.48			
Jun-10	1,483,463	\$4,644,961	\$3.13	5,014,459	\$19,703,753	\$3.93

Source: Statistics New Zealand and New Zealand Seafood Industry Council

Table 9c: Orange Roughy

Date	Quarterly Export Volume (kgs)	Quarterly Export Value (\$NZ)	Quarterly Export Price (\$NZ/kg)	Yearly Export Volume (kgs)	Yearly Export Value (\$NZ)	Yearly Export Price (\$NZ/kg)
Mar-06	1,643,038	\$19,039,146	\$11.59			
Jun-06	1,717,340	\$24,014,690	\$13.98			
Sep-06	2,418,954	\$24,915,312	\$10.30			
Dec-06	1,482,155	\$15,946,646	\$10.76			
Mar-07	1,237,066	\$12,256,397	\$9.91			
Jun-07	1,979,300	\$16,870,787	\$8.52	7,117,475	\$69,989,142	\$9.83
Sep-07	1,818,646	\$14,104,231	\$7.76			
Dec-07	1,846,439	\$14,214,567	\$7.70			
Mar-08	1,695,032	\$15,401,965	\$9.09			
Jun-08	1,446,392	\$16,007,889	\$11.07	6,806,509	\$59,728,652	\$8.78
Sep-08	1,691,851	\$16,886,480	\$9.98			
Dec-08	1,025,890	\$12,521,389	\$12.21			
Mar-09	940,674	\$11,841,117	\$12.59			
Jun-09	831,195	\$10,493,772	\$12.62	4,489,610	\$51,742,758	\$11.53
Sep-09	1,246,842	\$14,758,980	\$11.84			
Dec-09	1,074,748	\$13,935,714	\$12.97			
Mar-10	627,545	\$8,791,205	\$14.01			
Jun-10	746,349	\$11,786,049	\$15.79	3,695,484	\$49,271,948	\$13.33

Source: Statistics New Zealand and New Zealand Seafood Industry Council

**Table 9d: Southern Blue Whiting**

Date	Quarterly Export Volume (kgs)	Quarterly Export Value (\$NZ)	Quarterly Export Price (\$NZ/kg)	Yearly Export Volume (kgs)	Yearly Export Value (\$NZ)	Yearly Export Price (\$NZ/kg)
Mar-06	1,326,636	\$1,785,962	\$1.35			
Jun-06	917,040	\$1,414,455	\$1.54			
Sep-06	1,280,209	\$3,129,470	\$2.44			
Dec-06	5,844,734	\$12,463,199	\$2.13			
Mar-07	1,431,459	\$1,299,639	\$0.91			
Jun-07	1,343,462	\$1,306,082	\$0.97	9,899,864	\$18,198,390	\$1.84
Sep-07	553,700	\$333,142	\$0.60			
Dec-07	5,158,587	\$9,659,210	\$1.87			
Mar-08	1,024,602	\$1,100,551	\$1.07			
Jun-08	1,815,982	\$1,303,458	\$0.72	8,552,871	\$12,396,361	\$1.45
Sep-08	2,973,354	\$6,745,429	\$2.27			
Dec-08	4,809,236	\$13,542,335	\$2.82			
Mar-09	3,432,671	\$5,184,463	\$1.51			
Jun-09	1,672,044	\$2,606,967	\$1.56	12,887,305	\$28,079,194	\$2.18
Sep-09	4,423,329	\$7,578,954	\$1.71			
Dec-09	10,510,710	\$19,679,326	\$1.87			
Mar-10	2,394,995	\$2,775,541	\$1.16			
Jun-10	1,774,588	\$2,291,714	\$1.29	19,103,622	\$32,325,535	\$1.69

Source: Statistics New Zealand and New Zealand Seafood Industry Council

**Table 9e: Scampi**

Date	Quarterly Export Volume (kgs)	Quarterly Export Value (\$NZ)	Quarterly Export Price (\$NZ/kg)	Yearly Export Volume (kgs)	Yearly Export Value (\$NZ)	Yearly Export Price (\$NZ/kg)
Mar-06	175,554	\$4,827,796	\$27.50			
Jun-06	107,192	\$2,703,893	\$25.22			
Sep-06	156,812	\$4,807,171	\$30.66			
Dec-06	27,352	\$268,874	\$9.83			
Mar-07	18,000	\$282,997	\$15.72			
Jun-07	96,364	\$1,094,629	\$11.36	298,528	\$6,453,671	\$21.62
Sep-07	14,003	\$174,091	\$12.43			
Dec-07	30,685	\$371,387	\$12.10			
Mar-08	60,926	\$922,716	\$15.14			
Jun-08	19,675	\$233,729	\$11.88	125,289	\$1,701,923	\$13.58
Sep-08	171,584	\$5,157,094	\$30.06			
Dec-08	185,657	\$5,504,440	\$29.65			
Mar-09	119,875	\$4,602,226	\$38.39			
Jun-09	112,318	\$4,107,522	\$36.57	589,434	\$19,371,282	\$32.86
Sep-09	123,527	\$3,743,448	\$30.30			
Dec-09	199,384	\$6,240,806	\$31.30			
Mar-10	142,228	\$3,146,591	\$22.12			
Jun-10	103,136	\$2,835,491	\$27.49	568,275	\$15,966,336	\$28.10

Source: Statistics New Zealand and New Zealand Seafood Industry Council

Table 9f: Hake

Date	Quarterly Export Volume (kgs)	Quarterly Export Value (\$NZ)	Quarterly Export Price (\$NZ/kg)	Yearly Export Volume (kgs)	Yearly Export Value (\$NZ)	Yearly Export Price (\$NZ/kg)
Mar-06	1,118,406	\$6,863,090	\$6.14			
Jun-06	738,602	\$4,594,133	\$6.22			
Sep-06	2,212,642	\$16,135,939	\$7.29			
Dec-06	2,190,271	\$14,078,663	\$6.43			
Mar-07	938,000	\$5,578,238	\$5.95			
Jun-07	247,737	\$1,500,405	\$6.06	5,588,650	\$37,293,245	\$6.67
Sep-07	4,385,376	\$26,327,915	\$6.00			
Dec-07	1,466,218	\$9,590,609	\$6.54			
Mar-08	1,103,730	\$6,835,348	\$6.19			
Jun-08	394,220	\$2,565,381	\$6.51	7,349,544	\$45,319,253	\$6.17
Sep-08	940,096	\$7,826,099	\$8.32			
Dec-08	1,005,241	\$9,882,688	\$9.83			
Mar-09	1,233,851	\$11,826,371	\$9.58			
Jun-09	648,099	\$6,035,451	\$9.31	3,827,287	\$35,570,609	\$9.29
Sep-09	970,408	\$6,906,548	\$7.12			
Dec-09	1,923,581	\$11,067,611	\$5.75			
Mar-10	426,437	\$2,468,859	\$5.79			
Jun-10	1,455,878	\$6,847,847	\$4.70	4,776,304	\$27,290,865	\$5.71

Source: Statistics New Zealand and New Zealand Seafood Industry Council

Table 9g: Ling

Date	Quarterly Export Volume (kgs)	Quarterly Export Value (\$NZ)	Quarterly Export Price (\$NZ/kg)	Yearly Export Volume (kgs)	Yearly Export Value (\$NZ)	Yearly Export Price (\$NZ/kg)
Mar-06	1,161,439	\$6,857,154	\$5.90			
Jun-06	640,696	\$4,997,459	\$7.80			
Sep-06	1,646,521	\$13,245,870	\$8.04			
Dec-06	3,412,129	\$25,907,902	\$7.59			
Mar-07	1,533,576	\$11,425,744	\$7.45			
Jun-07	660,518	\$5,811,430	\$8.80	7,252,744	\$56,390,946	\$7.78
Sep-07	1,524,663	\$12,829,094	\$8.41			
Dec-07	2,845,793	\$23,967,603	\$8.42			
Mar-08	1,742,735	\$13,243,495	\$7.60			
Jun-08	1,223,514	\$9,480,320	\$7.75	7,336,705	\$59,520,512	\$8.11
Sep-08	1,361,224	\$9,909,091	\$7.28			
Dec-08	1,101,691	\$7,911,153	\$7.18			
Mar-09	1,536,340	\$11,308,325	\$7.36			
Jun-09	1,809,136	\$11,471,134	\$6.34	5,808,391	\$40,599,703	\$6.99
Sep-09	1,688,087	\$10,494,108	\$6.22			
Dec-09	1,496,147	\$8,578,778	\$5.73			
Mar-10	1,635,699	\$10,380,962	\$6.35			
Jun-10	1,043,411	\$7,944,854	\$7.61	5,863,344	\$37,398,702	\$6.38

Source: Statistics New Zealand and New Zealand Seafood Industry Council

Table 10: Inshore Shellfish

Date	Quarterly Export Volume (kgs)	Quarterly Export Value (\$NZ)	Quarterly Export Price (\$NZ/kg)	Yearly Export Volume (kgs)	Yearly Export Value (\$NZ)	Yearly Export Price (\$NZ/kg)
Mar-06	539,367	\$28,442,756	\$52.73			
Jun-06	617,529	\$37,770,498	\$61.16			
Sep-06	1,049,478	\$60,905,738	\$58.03			
Dec-06	966,980	\$54,208,163	\$56.06			
Mar-07	651,250	\$36,649,400	\$56.28			
Jun-07	581,214	\$34,704,602	\$59.71	3,248,922	\$186,467,903	\$57.39
Sep-07	917,214	\$54,382,852	\$59.29			
Dec-07	1,006,681	\$54,776,845	\$54.41			
Mar-08	588,882	\$35,420,846	\$60.15			
Jun-08	665,405	\$43,735,647	\$65.73	3,178,182	\$188,316,190	\$59.25
Sep-08	1,122,436	\$78,047,559	\$69.53			
Dec-08	919,695	\$68,608,595	\$74.60			
Mar-09	566,263	\$47,775,689	\$84.37			
Jun-09	604,354	\$48,630,720	\$80.47	3,212,748	\$243,062,563	\$75.66
Sep-09	1,098,993	\$75,585,822	\$68.78			
Dec-09	1,061,665	\$60,173,332	\$56.68			
Mar-10	814,098	\$55,646,546	\$68.35			
Jun-10	806,475	\$64,401,647	\$79.86	3,781,231	\$255,807,347	\$67.65

Source: Statistics New Zealand and New Zealand Seafood Industry Council

Table 10a: Rock Lobster

Date	Quarterly Export Volume (kgs)	Quarterly Export Value (\$NZ)	Quarterly Export Price (\$NZ/kg)	Yearly Export Volume (kgs)	Yearly Export Value (\$NZ)	Yearly Export Price (\$NZ/kg)
Mar-06	418,705	\$19,610,573	\$46.84			
Jun-06	491,729	\$28,524,605	\$58.01			
Sep-06	915,416	\$50,812,617	\$55.51			
Dec-06	585,772	\$28,098,833	\$47.97			
Mar-07	439,594	\$21,789,130	\$49.57			
Jun-07	474,068	\$27,404,057	\$57.81	2,414,850	\$128,104,637	\$53.05
Sep-07	813,393	\$47,166,439	\$57.99			
Dec-07	537,324	\$25,544,260	\$47.54			
Mar-08	474,631	\$27,745,922	\$58.46			
Jun-08	577,567	\$37,171,377	\$64.36	2,402,915	\$137,627,998	\$57.28
Sep-08	1,027,712	\$71,322,776	\$69.40			
Dec-08	558,602	\$43,280,653	\$77.48			
Mar-09	403,643	\$37,058,752	\$91.81			
Jun-09	503,224	\$41,549,618	\$82.57	2,493,181	\$193,211,799	\$77.50
Sep-09	947,368	\$67,590,575	\$71.35			
Dec-09	592,384	\$38,032,434	\$64.20			
Mar-10	580,997	\$43,021,261	\$74.05			
Jun-10	694,378	\$57,461,714	\$82.75	2,815,127	\$206,105,984	\$73.21

Source: Statistics New Zealand and New Zealand Seafood Industry Council

Table 10b: Paua

Date	Quarterly Export Volume (kgs)	Quarterly Export Value (\$NZ)	Quarterly Export Price (\$NZ/kg)	Yearly Export Volume (kgs)	Yearly Export Value (\$NZ)	Yearly Export Price (\$NZ/kg)
Mar-06	120,662	\$8,832,183	\$73.20			
Jun-06	125,800	\$9,245,893	\$73.50			
Sep-06	134,062	\$10,093,121	\$75.29			
Dec-06	381,208	\$26,109,330	\$68.49			
Mar-07	211,656	\$14,860,270	\$70.21			
Jun-07	107,146	\$7,300,545	\$68.14	834,072	\$58,363,266	\$69.97
Sep-07	103,821	\$7,216,413	\$69.51			
Dec-07	469,357	\$29,232,585	\$62.28			
Mar-08	114,251	\$7,674,924	\$67.18			
Jun-08	87,838	\$6,564,270	\$74.73	775,267	\$50,688,192	\$65.38
Sep-08	94,724	\$6,724,783	\$70.99			
Dec-08	361,093	\$25,327,942	\$70.14			
Mar-09	162,620	\$10,716,937	\$65.90			
Jun-09	101,130	\$7,081,102	\$70.02	719,567	\$49,850,764	\$69.28
Sep-09	151,625	\$7,995,247	\$52.73			
Dec-09	469,281	\$22,140,898	\$47.18			
Mar-10	233,101	\$12,625,285	\$54.16			
Jun-10	112,097	\$6,939,933	\$61.91	966,104	\$49,701,363	\$51.45

Source: Statistics New Zealand and New Zealand Seafood Industry Council

Table 11: Aquaculture

Date	Quarterly Export Volume (kgs)	Quarterly Export Value (\$NZ)	Quarterly Export Price (\$NZ/kg)	Yearly Export Volume (kgs)	Yearly Export Value (\$NZ)	Yearly Export Price (\$NZ/kg)
Mar-06	9,725,569	\$52,361,369	\$5.38			
Jun-06	12,132,959	\$68,182,906	\$5.62			
Sep-06	8,756,901	\$54,844,734	\$6.26			
Dec-06	11,695,373	\$66,873,851	\$5.72			
Mar-07	11,282,782	\$59,620,827	\$5.28			
Jun-07	12,114,380	\$62,129,016	\$5.13	43,849,436	\$243,468,428	\$5.55
Sep-07	9,144,083	\$49,751,386	\$5.44			
Dec-07	9,758,608	\$57,766,659	\$5.92			
Mar-08	9,069,557	\$50,330,085	\$5.55			
Jun-08	11,840,137	\$71,527,841	\$6.04	39,812,385	\$229,375,971	\$5.76
Sep-08	7,875,597	\$60,574,993	\$7.69			
Dec-08	9,305,608	\$82,350,200	\$8.85			
Mar-09	9,879,705	\$81,848,482	\$8.28			
Jun-09	11,689,747	\$79,869,566	\$6.83	38,750,657	\$304,643,241	\$7.86
Sep-09	9,257,203	\$58,489,265	\$6.32			
Dec-09	10,187,857	\$59,183,407	\$5.81			
Mar-10	10,105,228	\$58,624,448	\$5.80			
Jun-10	12,120,816	\$74,451,452	\$6.14	41,671,104	\$250,748,572	\$6.02

Source: Statistics New Zealand and New Zealand Seafood Industry Council

Table 11a: Green Lipped Mussels

Date	Quarterly Export Volume (kgs)	Quarterly Export Value (\$NZ)	Quarterly Export Price (\$NZ/kg)	Yearly Export Volume (kgs)	Yearly Export Value (\$NZ)	Yearly Export Price (\$NZ/kg)
Mar-06	8,360,485	\$41,859,116	\$5.01			
Jun-06	10,733,706	\$56,378,333	\$5.25			
Sep-06	6,632,586	\$36,446,822	\$5.50			
Dec-06	9,415,942	\$47,021,819	\$4.99			
Mar-07	10,319,359	\$50,318,382	\$4.88			
Jun-07	10,990,834	\$52,224,770	\$4.75	37,358,721	\$186,011,793	\$4.98
Sep-07	7,822,466	\$36,972,290	\$4.73			
Dec-07	7,733,872	\$37,556,917	\$4.86			
Mar-08	8,020,277	\$38,772,352	\$4.83			
Jun-08	10,762,456	\$60,134,499	\$5.59	34,339,071	\$173,436,058	\$5.05
Sep-08	6,362,876	\$43,226,615	\$6.79			
Dec-08	7,579,101	\$61,330,673	\$8.09			
Mar-09	8,708,801	\$66,196,183	\$7.60			
Jun-09	9,629,122	\$57,862,779	\$6.01	32,279,900	\$228,616,250	\$7.08
Sep-09	7,333,976	\$39,193,365	\$5.34			
Dec-09	8,170,927	\$39,215,840	\$4.80			
Mar-10	8,348,062	\$39,628,126	\$4.75			
Jun-10	9,288,656	\$44,536,565	\$4.79	33,141,621	\$162,573,896	\$4.91

Source: Statistics New Zealand and New Zealand Seafood Industry Council

Table 11b: Oysters

Date	Quarterly Export Volume (kgs)	Quarterly Export Value (\$NZ)	Quarterly Export Price (\$NZ/kg)	Yearly Export Volume (kgs)	Yearly Export Value (\$NZ)	Yearly Export Price (\$NZ/kg)
Mar-06	305,078	\$2,320,372	\$7.61			
Jun-06	309,206	\$2,323,299	\$7.51			
Sep-06	924,132	\$6,251,464	\$6.76			
Dec-06	1,046,562	\$7,124,242	\$6.81			
Mar-07	275,911	\$1,809,791	\$6.56			
Jun-07	374,538	\$2,271,062	\$6.06	2,621,143	\$17,456,559	\$6.66
Sep-07	580,303	\$4,128,234	\$7.11			
Dec-07	957,075	\$8,072,080	\$8.43			
Mar-08	199,546	\$1,743,396	\$8.74			
Jun-08	254,126	\$2,177,968	\$8.57	1,991,050	\$16,121,678	\$8.10
Sep-08	595,142	\$5,862,073	\$9.85			
Dec-08	822,884	\$7,065,548	\$8.59			
Mar-09	228,519	\$1,918,470	\$8.40			
Jun-09	408,928	\$3,145,315	\$7.69	2,055,473	\$17,991,406	\$8.75
Sep-09	560,322	\$4,253,472	\$7.59			
Dec-09	892,773	\$6,824,614	\$7.64			
Mar-10	373,848	\$2,925,557	\$7.83			
Jun-10	506,331	\$3,740,154	\$7.39	2,333,274	\$17,743,797	\$7.60

Source: Statistics New Zealand and New Zealand Seafood Industry Council

Table 11c: Salmon

Date	Quarterly Export Volume (kgs)	Quarterly Export Value (\$NZ)	Quarterly Export Price (\$NZ/kg)	Yearly Export Volume (kgs)	Yearly Export Value (\$NZ)	Yearly Export Price (\$NZ/kg)
Mar-06	1,060,006	\$8,181,881	\$7.72			
Jun-06	1,090,047	\$9,481,274	\$8.70			
Sep-06	1,200,183	\$12,146,448	\$10.12			
Dec-06	1,232,869	\$12,727,790	\$10.32			
Mar-07	687,512	\$7,492,654	\$10.90			
Jun-07	749,008	\$7,633,184	\$10.19	3,869,572	\$40,000,076	\$10.34
Sep-07	741,314	\$8,650,862	\$11.67			
Dec-07	1,067,661	\$12,137,662	\$11.37			
Mar-08	849,734	\$9,814,337	\$11.55			
Jun-08	823,555	\$9,215,374	\$11.19	3,482,264	\$39,818,235	\$11.43
Sep-08	917,579	\$11,486,305	\$12.52			
Dec-08	903,623	\$13,953,979	\$15.44			
Mar-09	942,385	\$13,733,829	\$14.57			
Jun-09	1,651,697	\$18,861,472	\$11.42	4,415,284	\$58,035,585	\$13.14
Sep-09	1,362,905	\$15,042,428	\$11.04			
Dec-09	1,124,157	\$13,142,953	\$11.69			
Mar-10	1,383,318	\$16,070,765	\$11.62			
Jun-10	2,325,879	\$26,175,108	\$11.25	6,196,259	\$70,431,254	\$11.37

Source: Statistics New Zealand and New Zealand Seafood Industry Council

Table 12: Pelagic

Date	Quarterly Export Volume (kgs)	Quarterly Export Value (\$NZ)	Quarterly Export Price (\$NZ/kg)	Yearly Export Volume (kgs)	Yearly Export Value (\$NZ)	Yearly Export Price (\$NZ/kg)
Mar-06	46,634,814	\$77,880,591	\$1.67			
Jun-06	38,876,242	\$73,106,567	\$1.88			
Sep-06	18,840,343	\$38,075,069	\$2.02			
Dec-06	15,447,658	\$24,239,266	\$1.57			
Mar-07	35,397,623	\$54,000,187	\$1.53			
Jun-07	42,953,119	\$65,302,126	\$1.52	112,638,743	\$181,616,648	\$1.61
Sep-07	24,799,992	\$42,168,022	\$1.70			
Dec-07	19,252,304	\$27,224,994	\$1.41			
Mar-08	44,144,575	\$65,019,561	\$1.47			
Jun-08	41,751,177	\$69,200,939	\$1.66	129,948,048	\$203,613,516	\$1.57
Sep-08	17,506,425	\$34,316,948	\$1.96			
Dec-08	16,056,648	\$34,177,795	\$2.13			
Mar-09	25,829,097	\$55,103,681	\$2.13			
Jun-09	34,763,486	\$71,824,966	\$2.07	94,155,656	\$195,423,390	\$2.08
Sep-09	20,011,804	\$44,748,501	\$2.24			
Dec-09	18,509,663	\$27,023,161	\$1.46			
Mar-10	29,986,444	\$50,902,194	\$1.70			
Jun-10	32,622,060	\$82,411,739	\$2.53	101,129,971	\$205,085,595	\$2.03

Source: Statistics New Zealand and New Zealand Seafood Industry Council

Table 12a: Squid

Date	Quarterly Export Volume (kgs)	Quarterly Export Value (\$NZ)	Quarterly Export Price (\$NZ/kg)	Yearly Export Volume (kgs)	Yearly Export Value (\$NZ)	Yearly Export Price (\$NZ/kg)
Mar-06	24,782,128	\$48,088,332	\$1.94			
Jun-06	24,520,887	\$51,199,365	\$2.09			
Sep-06	4,744,382	\$11,060,231	\$2.33			
Dec-06	2,794,210	\$7,696,882	\$2.75			
Mar-07	12,350,846	\$21,094,936	\$1.71			
Jun-07	28,886,764	\$41,232,204	\$1.43	48,776,202	\$81,084,253	\$1.66
Sep-07	12,359,572	\$15,633,983	\$1.26			
Dec-07	3,539,906	\$7,597,303	\$2.15			
Mar-08	13,336,734	\$17,270,085	\$1.29			
Jun-08	26,803,929	\$38,542,746	\$1.44	56,040,141	\$79,044,117	\$1.41
Sep-08	4,431,843	\$9,746,690	\$2.20			
Dec-08	1,867,366	\$5,519,723	\$2.96			
Mar-09	4,935,585	\$9,242,417	\$1.87			
Jun-09	25,014,178	\$46,948,605	\$1.88	36,248,972	\$71,457,435	\$1.97
Sep-09	6,577,302	\$14,893,467	\$2.26			
Dec-09	1,365,685	\$4,225,850	\$3.09			
Mar-10	4,867,889	\$11,168,169	\$2.29			
Jun-10	15,992,257	\$46,224,918	\$2.89	28,803,133	\$76,512,404	\$2.66

Source: Statistics New Zealand and New Zealand Seafood Industry Council

Table 12b: Jack Mackerel

Date	Quarterly Export Volume (kgs)	Quarterly Export Value (\$NZ)	Quarterly Export Price (\$NZ/kg)	Yearly Export Volume (kgs)	Yearly Export Value (\$NZ)	Yearly Export Price (\$NZ/kg)
Mar-06	9,117,653	\$11,231,010	\$1.23			
Jun-06	4,834,622	\$6,495,961	\$1.34			
Sep-06	8,520,053	\$11,646,302	\$1.37			
Dec-06	5,275,579	\$6,303,537	\$1.19			
Mar-07	7,863,944	\$11,359,970	\$1.44			
Jun-07	4,108,697	\$5,797,160	\$1.41	25,768,273	\$35,106,969	\$1.36
Sep-07	5,092,384	\$6,567,399	\$1.29			
Dec-07	8,133,938	\$8,812,803	\$1.08			
Mar-08	11,240,152	\$13,918,817	\$1.24			
Jun-08	5,450,859	\$6,878,842	\$1.26	29,917,333	\$36,177,861	\$1.21
Sep-08	6,745,834	\$11,336,631	\$1.68			
Dec-08	9,646,867	\$19,204,609	\$1.99			
Mar-09	8,941,545	\$18,565,412	\$2.08			
Jun-09	4,185,725	\$6,719,179	\$1.61	29,519,971	\$55,825,831	\$1.89
Sep-09	6,347,742	\$10,380,462	\$1.64			
Dec-09	8,176,883	\$10,263,379	\$1.26			
Mar-10	10,003,700	\$15,189,144	\$1.52			
Jun-10	5,913,011	\$8,547,166	\$1.45	30,441,336	\$44,380,151	\$1.46

Source: Statistics New Zealand and New Zealand Seafood Industry Council



Table 12c: Blue Mackerel

Date	Quarterly Export Volume (kgs)	Quarterly Export Value (\$NZ)	Quarterly Export Price (\$NZ/kg)	Yearly Export Volume (kgs)	Yearly Export Value (\$NZ)	Yearly Export Price (\$NZ/kg)
Mar-06	1,456,243	\$1,561,126	\$1.07			
Jun-06	763,638	\$1,100,069	\$1.44			
Sep-06	2,114,785	\$4,317,035	\$2.04			
Dec-06	3,614,202	\$5,217,985	\$1.44			
Mar-07	2,181,990	\$2,823,371	\$1.29			
Jun-07	548,277	\$829,920	\$1.51	8,459,254	\$13,188,311	\$1.56
Sep-07	1,513,552	\$2,640,042	\$1.74			
Dec-07	3,186,931	\$3,827,906	\$1.20			
Mar-08	3,474,034	\$4,145,398	\$1.19			
Jun-08	1,626,659	\$1,903,404	\$1.17	9,801,176	\$12,516,750	\$1.28
Sep-08	1,639,832	\$2,953,551	\$1.80			
Dec-08	1,274,531	\$1,850,211	\$1.45			
Mar-09	1,300,948	\$2,424,564	\$1.86			
Jun-09	341,991	\$677,810	\$1.98	4,557,302	\$7,906,136	\$1.73
Sep-09	2,186,435	\$3,975,933	\$1.82			
Dec-09	4,160,922	\$4,928,260	\$1.18			
Mar-10	3,446,083	\$4,084,621	\$1.19			
Jun-10	2,451,011	\$3,063,357	\$1.25	12,244,451	\$16,052,171	\$1.31

Source: Statistics New Zealand and New Zealand Seafood Industry Council

Table 12d: Barracouta

Date	Quarterly Export Volume (kgs)	Quarterly Export Value (\$NZ)	Quarterly Export Price (\$NZ/kg)	Yearly Export Volume (kgs)	Yearly Export Value (\$NZ)	Yearly Export Price (\$NZ/kg)
Mar-06	4,528,248	\$5,061,770	\$1.12			
Jun-06	5,275,120	\$6,005,914	\$1.14			
Sep-06	2,909,369	\$3,458,273	\$1.19			
Dec-06	3,679,971	\$4,446,575	\$1.21			
Mar-07	3,797,266	\$4,754,063	\$1.25			
Jun-07	5,480,742	\$7,216,692	\$1.32	15,867,348	\$19,875,603	\$1.25
Sep-07	4,938,891	\$6,102,741	\$1.24			
Dec-07	3,698,516	\$5,001,042	\$1.35			
Mar-08	4,956,776	\$6,761,989	\$1.36			
Jun-08	4,524,472	\$7,752,644	\$1.71	18,118,655	\$25,618,416	\$1.41
Sep-08	4,131,292	\$7,404,774	\$1.79			
Dec-08	3,176,308	\$6,792,004	\$2.14			
Mar-09	5,082,698	\$8,892,144	\$1.75			
Jun-09	4,121,944	\$6,787,415	\$1.65	16,512,242	\$29,876,337	\$1.81
Sep-09	4,329,401	\$6,424,562	\$1.48			
Dec-09	3,768,463	\$5,440,922	\$1.44			
Mar-10	5,666,880	\$8,546,360	\$1.51			
Jun-10	4,752,895	\$6,832,181	\$1.44	18,517,639	\$27,244,025	\$1.47

Source: Statistics New Zealand and New Zealand Seafood Industry Council

Table 12e: Tunas

Date	Quarterly Export Volume (kgs)	Quarterly Export Value (\$NZ)	Quarterly Export Price (\$NZ/kg)	Yearly Export Volume (kgs)	Yearly Export Value (\$NZ)	Yearly Export Price (\$NZ/kg)
Mar-06	6,750,542	\$11,938,353	\$1.77			
Jun-06	3,481,975	\$8,305,258	\$2.39			
Sep-06	551,754	\$7,593,228	\$13.76			
Dec-06	83,696	\$574,287	\$6.86			
Mar-07	8,712,318	\$12,874,079	\$1.48			
Jun-07	3,620,749	\$8,855,570	\$2.45	12,968,517	\$29,897,164	\$2.31
Sep-07	665,950	\$10,248,662	\$15.39			
Dec-07	453,995	\$1,298,692	\$2.86			
Mar-08	10,851,341	\$22,052,259	\$2.03			
Jun-08	3,013,137	\$13,164,400	\$4.37	14,984,423	\$46,764,013	\$3.12
Sep-08	418,050	\$2,327,106	\$5.57			
Dec-08	81,818	\$756,533	\$9.25			
Mar-09	5,508,286	\$15,253,303	\$2.77			
Jun-09	1,010,857	\$9,472,615	\$9.37	7,019,011	\$27,809,557	\$3.96
Sep-09	538,850	\$8,647,267	\$16.05			
Dec-09	1,026,971	\$2,042,362	\$1.99			
Mar-10	5,932,955	\$11,137,598	\$1.88			
Jun-10	3,411,068	\$16,439,781	\$4.82	10,909,844	\$38,267,008	\$3.51

Source: Statistics New Zealand and New Zealand Seafood Industry Council