



fisheries statistics report 2009



Freshwater fisheries statistics for England, Wales and the Border Esk, 2009

(Declared catches of salmon and sea trout by rods, nets and other instruments)



This report, prepared by the Environment Agency, is one of a long-term series.
It contributes to our objectives of communicating our fisheries monitoring programme.

We are the Environment Agency. It's our job to look after your environment and make it **a better place** – for you, and for future generations.

Your environment is the air you breathe, the water you drink and the ground you walk on. Working with business, Government and society as a whole, we are making your environment cleaner and healthier.

The Environment Agency. Out there, making your environment a better place.

Published by:

Environment Agency Rio House Waterside
Drive, Aztec West Almondsbury, Bristol
BS32 4UD Tel: 0870 8506506 Email:
enquiries@environment-agency.gov.uk
www.environment-agency.gov.uk

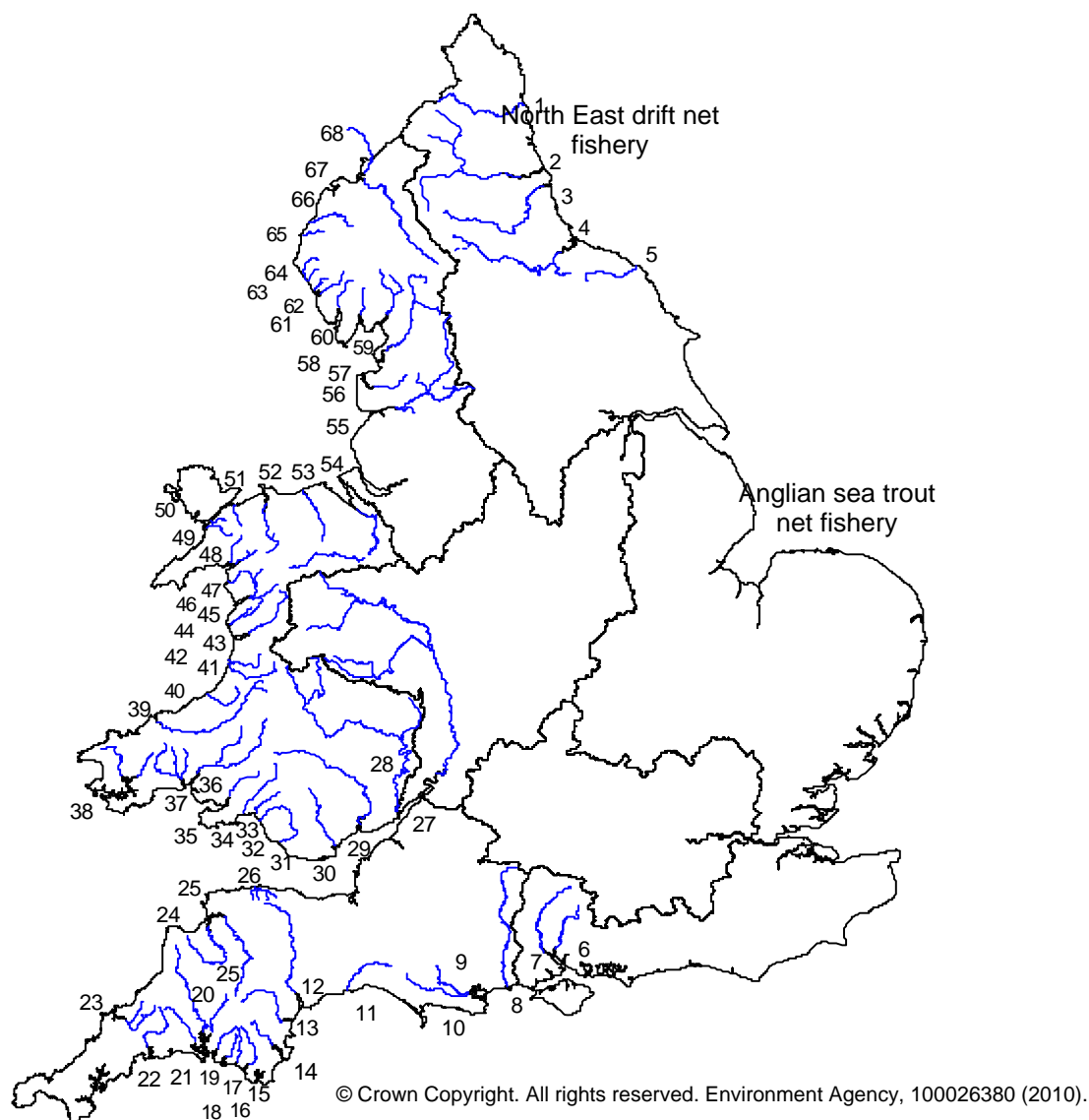
© Environment Agency

All rights reserved. This document may be reproduced
with prior permission of the Environment Agency.
December 2009.

Acknowledgements

The Environment Agency would like to take this opportunity to thank all the fishermen who sent us their catch returns last year. Your returns help protect our fish stocks and without them this report would not be possible.

Major salmon and sea trout rivers and fisheries in England and Wales



Key:

North East

- 1 Coquet
- 2 Tyne
- 3 Wear
- 4 Tees
- 5 Esk (Yorks)

Southern

- 6 Itchen
- 7 Test

South West

- 8 Avon (Hants)
- 9 Piddle
- 10 Frome
- 11 Axe
- 12 Exe
- 13 Teign
- 14 Dart
- 15 Avon (Devon)
- 16 Erme
- 17 Yealm
- 18 Plym
- 19 Tavy
- 20 Tamar
- 21 Lynher

- 22 Fowey
- 23 Camel
- 24 Torridge
- 25 Taw
- 26 Lyn

Midlands

- 27 Severn
- Wales**
- 28 Wye
 - 29 Usk
 - 30 Taff
 - 31 Ogmore

- 32 Afan
- 33 Neath
- 34 Tawe
- 35 Loughor
- 36 Tywi
- 37 Taf
- 38 Cleddau
- 39 Teifi
- 40 Aeron
- 41 Ystwyth
- 42 Rheidol
- 43 Dyfi
- 44 Dysynni
- 45 Mawddach

- 46 Artro
- 47 Dwyrhyd
- 48 Glaslyn
- 49 Gwyrfai
- 50 Seiont
- 51 Ogwen
- 52 Conwy
- 53 Clwyd
- 54 Dee

North West

- 55 Ribble
- 56 Wyre
- 57 Lune
- 58 Kent
- 59 Leven
- 60 Crake
- 61 Duddon
- 62 Esk (Cumbrian)
- 63 Irt
- 64 Ehen
- 65 Derwent
- 66 Ellen
- 67 Eden
- 68 Esk (Border)

Contents

1.	Introduction	6
2.	The Environment Agency and its Regions	6
3.	Rod and net licence catch returns	6
4.	National overview and summary of main findings	7
	Table 1	Summary of declared salmon and sea trout catches England & Wales (2009, 2008 and 5-year mean)
	Table 2	Summary of total salmon and sea trout net and fixed engine catches and weights (2009)
	Table 3	Summary of total salmon and sea trout catches and weights (2009)
	Figure 1	Number of net licences issued (1985-2009) and number of days declared fished by salmon and sea trout rod licence holders (1994-2009), England & Wales
	Figure 2	Total salmon net catches for England & Wales (1956-2009)
	Figure 3	Total salmon rod catches for England & Wales (1956-2009)
	Figure 4	Total sea trout net catches for England & Wales (1978-2009)
	Figure 5	Total sea trout rod catches for England & Wales (1978-2009)
5.	Regional Catch Summaries	12
	Table 4	Summary of salmon net catches by Region (2009, 2008 and 5-year mean)
	Table 5	Summary of sea trout net catches by Region (2009, 2008 and 5-year mean)
	Table 6	Summary of salmon rod catches by Region (2009, 2008 and 5-year mean)
	Table 7	Summary of sea trout rod catches by Region (2009, 2008 and 5-year mean)
	Figure 6	Salmon and sea trout net catches by Region (2009)
	Figure 7	Salmon and sea trout rod catches by Region (2009)
6.	Description of data tables 1 to 21	14
	Data tables (1 to 21)	15
7.	References	39
8.	Glossary	39

Section 1

Introduction

This report is the Environment Agency's fifteenth collation of salmon and sea trout catch statistics for England and Wales and the Border Esk in Scotland. From 1989 to 1994, these statistics were published by the National Rivers Authority (NRA). The Ministry of Agriculture, Fisheries and Food, Directorate of Fisheries Research also included them in its Data Report series between 1983 and 1988.

This report is a reference document of declared salmonid catches in England, Wales and Border Esk.

Salmon stock assessment data (including provisional catches and run estimates) are published in an annual assessment for the

International Council for the Exploration of the Seas (ICES). The thirteenth report in this series was published jointly by the Environment Agency and the Centre for Environment, Fisheries & Aquaculture Science (Cefas) in April 2010 (www.environment-agency.gov.uk/fish).

The catch data recorded here represent declared catches only. This document is therefore not an entirely accurate record of the total numbers of fish landed. Furthermore, the relationship between catch and stock size is not always straight forward, regardless of the accuracy of the catch data. Great care must be taken therefore in interpreting these data.

Section 2

The Environment Agency and its regions

The Environment Agency is a non-departmental public body established by the Environment Act 1995. It has taken over the functions of its predecessors, the National Rivers Authority, Her Majesty's Inspectorate of Pollution, Waste Regulation Authorities and some parts of the Department of the Environment. The Environment Agency came into effect on 1 April 1996.

There are eight Environment Agency Regions: North East & Yorkshire, Anglian, Thames, Southern, South West, Midlands, Environment Agency Wales and North West. The Border Esk in Scotland is regulated by North West region and for the purposes of this report will be included as part of the North West statistics. Throughout this report references to salmon and sea trout fisheries in England and Wales includes the parts of the Border Esk in Scotland.

Section 3

Rod and net licence catch returns

Salmon and sea trout rod licence holders are legally required to submit a full and accurate catch return to the Agency by 1 January in the following year. Commercial net and fixed engine licence holders must submit their returns within seven days of the end of each month during the fishing season.

In January 2009, for the fifteenth consecutive year, the Environment Agency sent a reminder to all holders of a salmon and sea trout rod licence to declare their catch returns. As in years 1994-2008, the effect of this reminder was marked compared with 1992 and 1993 returns, when no reminders were sent.

In an attempt to further improve reporting rates, the Environment Agency now also routinely issues second reminders to anglers who fail to submit a return in response to the first reminder. These were issued in January 2009. We believe that the returns published here record over 80 percent of all migratory salmonids caught in England and Wales.

National overview and summary of main findings

Table 1 Summary of declared salmon and sea trout rod and net catches for England and Wales in 2009 showing % change on 2008 and the 5- year mean (2004- 2008)

	2009	2008	5-yr. mean (2004-2008)	% change (+/-)	
				2009 on 2008	2009 on 5- yr mean
RODS					
*Licences issued	36,461	33,900	32,913	8%	11%
*Days declared fished	183,287	171,033	172,420	7%	6%
Salmon caught	15,563	23,512	22,352	-34%	-30%
% Salmon released	58%	55%	54%	3%	4%
(number released)	9,096	13035	12020		
Sea trout caught	30,359	27,707	31,559	10%	-4%
% Sea trout released	62%	59%	58%	3%	4%
(number released)	18,739	16219	18108.4		
NETS					
Licences issued	317	333	367	-5%	-14%
Salmon caught	7,505	8,849	13,348	-15%	-44%
Sea trout caught	29,296	27,974	24,624	5%	19%

* Salmon and sea trout licences only

- River flows in 2009 were below average early and late in the season, following a similar pattern to 2007. Above average flows in July were associated with above average catches for the month. Overall conditions for angling appear to have been relatively poor for salmon but good for sea trout.

- The number of salmon and sea trout rod licences issued in 2009 (36,461) increased by 8% compared with 2008, and by 11% compared with the mean of the previous five years (2004-2008).

- The number of salmon & sea trout rod licence returns in 2009 was 25537- a 70% return rate. The split between annual and short term licences could not be calculated this year; however, based on previous years' calculations, the majority of these returns are likely to have been from annual licence holders.

- The total declared salmon rod catch in 2009 (15,527) decreased by 34% compared with 2008, with a 31% decrease when compared with the 5- year mean (22,352).

- The declared rod catch of sea trout in 2009 (30,204) increased by 9% compared with 2008 (27,707) but has decreased by 4% compared with the 5-year mean (31,559).

- Catch and Release rates for rod caught salmon (58%) and sea trout (62%) in 2009 showing a slight increase to those recorded in 2008. Implementation of byelaws, incentive schemes and angler awareness has continued resulting in a dramatic increase in release over the past few years. In 1993 just 8% of rod caught salmon were released following capture.

Section 4

- 42% of salmon and 50 % of sea trout were caught by anglers using fly in 2009, followed by spinning (39%, 31%) and bait (17%). 2% of catches had no fishing method information. For salmon fishing there has been a change from 2008 where most fish were caught by spinning (48% of catches).

- The river with the highest declared rod catch of salmon in 2009 was the Tyne (3,073) followed by the Eden (1,362), the Ribble (1,007), the Lune (808), the Derwent (801) and the Wear (716). This is much lower than river catches from 2008. 20% of the total England and Wales rod catch of salmon was recorded on the Tyne in 2009.

- The river with the highest declared rod catch of sea trout in 2009 was the Tywi (5,666) followed by the Teifi (4,116), Dyfi (2,850), Tyne (2,812), Ribble (2,562) and the Wear (2,540). There was a marked increase of sea trout caught in these rivers compared with 2008.

- Sea trout are reported to have been caught in the Thames in 2009, by coarse fish anglers. These fish are not included in this report as they were not officially reported.

- A total of 313 salmon and sea trout commercial net licences were issued in 2009. This compares with 333 in 2008 and a 5-year mean of 367. Since 1985 there has been a 69% reduction in the number of net licences issued annually in England and Wales (from 1,026 to 313).

- The salmon net catch in 2009 (7,425) decreased by 16% compared with the previous year and by 44% when compared with the 5-year mean (13,348). The North East drift net catch has reduced significantly since the introduction of the buy-out in 2003 (from a catch of 27,685 recorded by 69 fishermen in 2002 to a catch of 2,590 reported by 11 drift netmen in 2009, a reduction of 91%).

- The average weight of net caught salmon in 2009 was 3.9 kg. This compares with an average weight of 4 kg for rod caught salmon.

- Net fisheries exempted from the 'spring' byelaws released 1 salmon before 1 June in 2009 (Anglian drift net). All salmon caught in the South West were released (223 in total).

- A total of 29,071 sea trout were declared caught by the net fisheries in 2009, an increase of 4% compared with the 2008 catch and an increase of 18% compared with the 5-year mean. The North East drift net sea trout catch has decreased by 77% since the 2003 buy-out (from 15,242 in 2002 to 3,490 in 2008).

- The average weight of net and rod caught sea trout in 2009 was 1.9 kg and 1kg respectively). Byelaws regulating mesh size result in the capture of fewer small sea trout by most net fisheries.

- In January 2009 new byelaws were introduced: banning the sale of rod-caught salmon and sea trout in England and Wales, as well as requiring all net-caught fish to be tagged and recorded in a log book. The Marine and Coastal Access Act 2009 now states that "handling salmon (and sea trout) in suspicious circumstances" includes "selling" and extends the provisions to other fish.

Section 4

Table 2 Summary of total salmon and sea trout net and fixed engine catches and weights, 2009

	Salmon		Sea trout	
	Number	Weight (t.)	Number	Weight (t.)
Caught	7,505	29	30,755	55
Retained	7,219	28	30,747	55
Released	286	1	8	0

Table 3 Summary of total salmon and sea trout rod catches and weights, 2009

	Salmon		Sea trout	
	Number	Weight (t.)	Number	Weight (t.)
Caught	15,563	62	30,359	29
Retained	6,467	25	11,620	14
Released	9,096	37	18,739	15

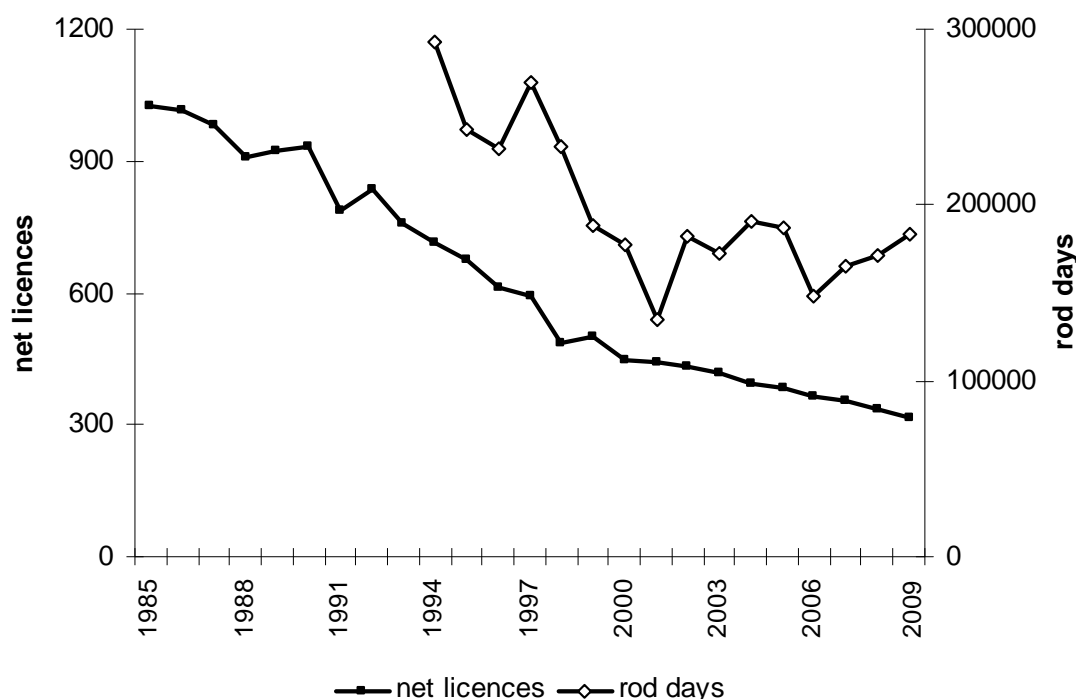


Figure 1 Number of net and fixed engine licences issued (1985-2009) and total number of days fished by salmon and sea trout rod licence holders (1994-2009), England & Wales.

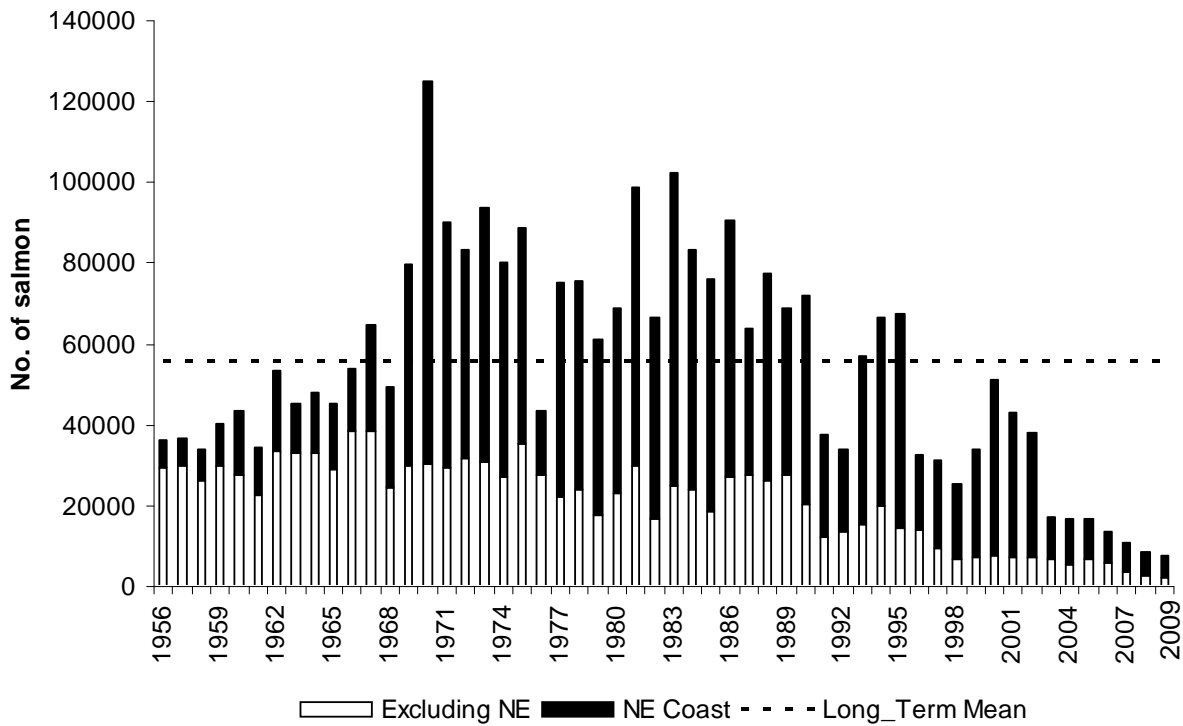


Figure 2 Total declared salmon net and fixed engine catch for England & Wales, 1956-2009 (shaded area indicates the catch for the North East Coast fishery).

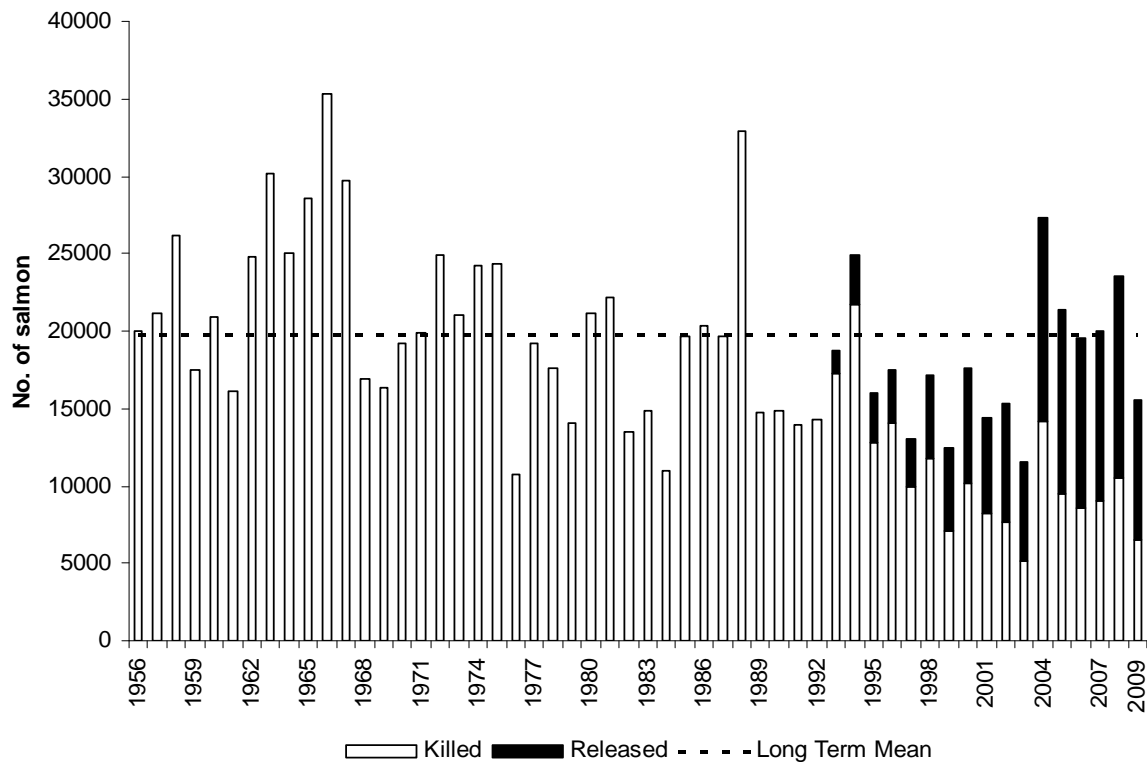


Figure 3 Total declared salmon rod catch for England & Wales, 1956-2009 (shaded area indicates fish caught and released).

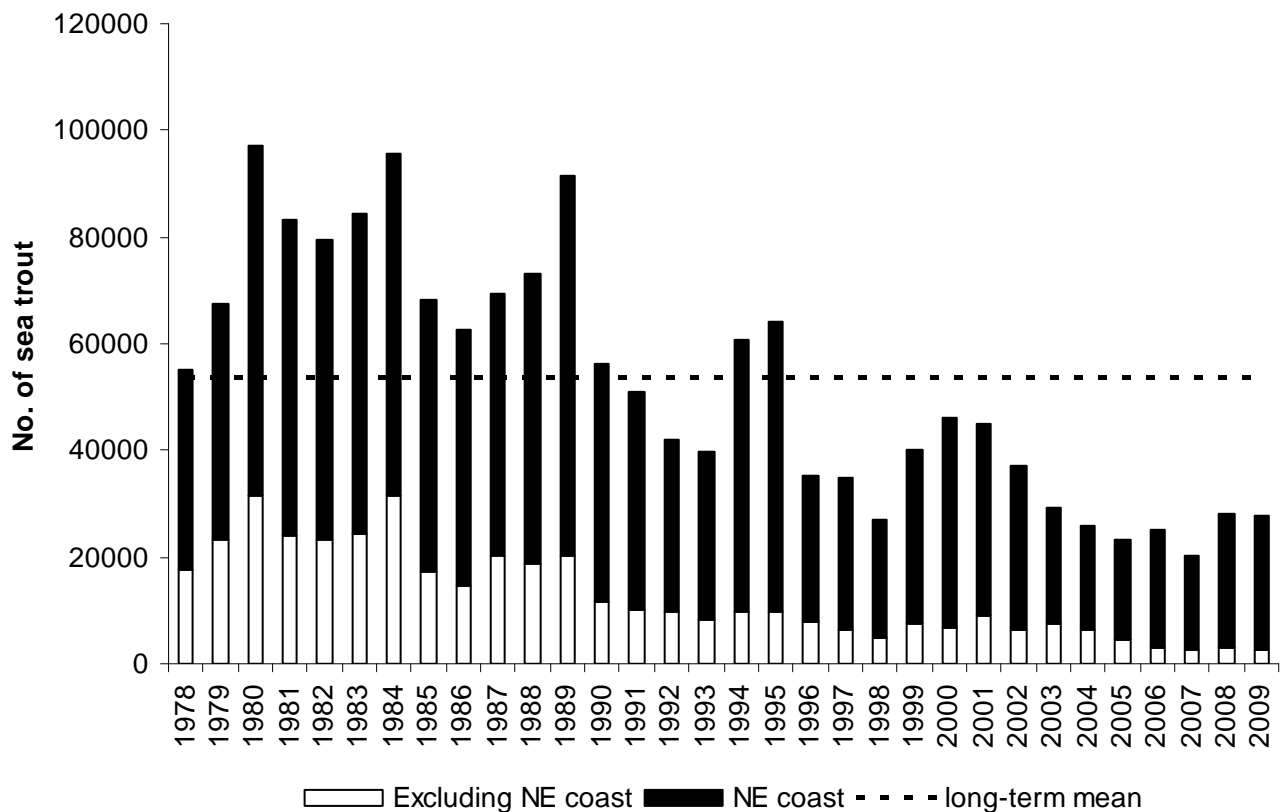


Figure 4 Total declared sea trout net and fixed engine catch for England & Wales, 1978-2009 (shaded area indicates the catch for the North East coast fishery).

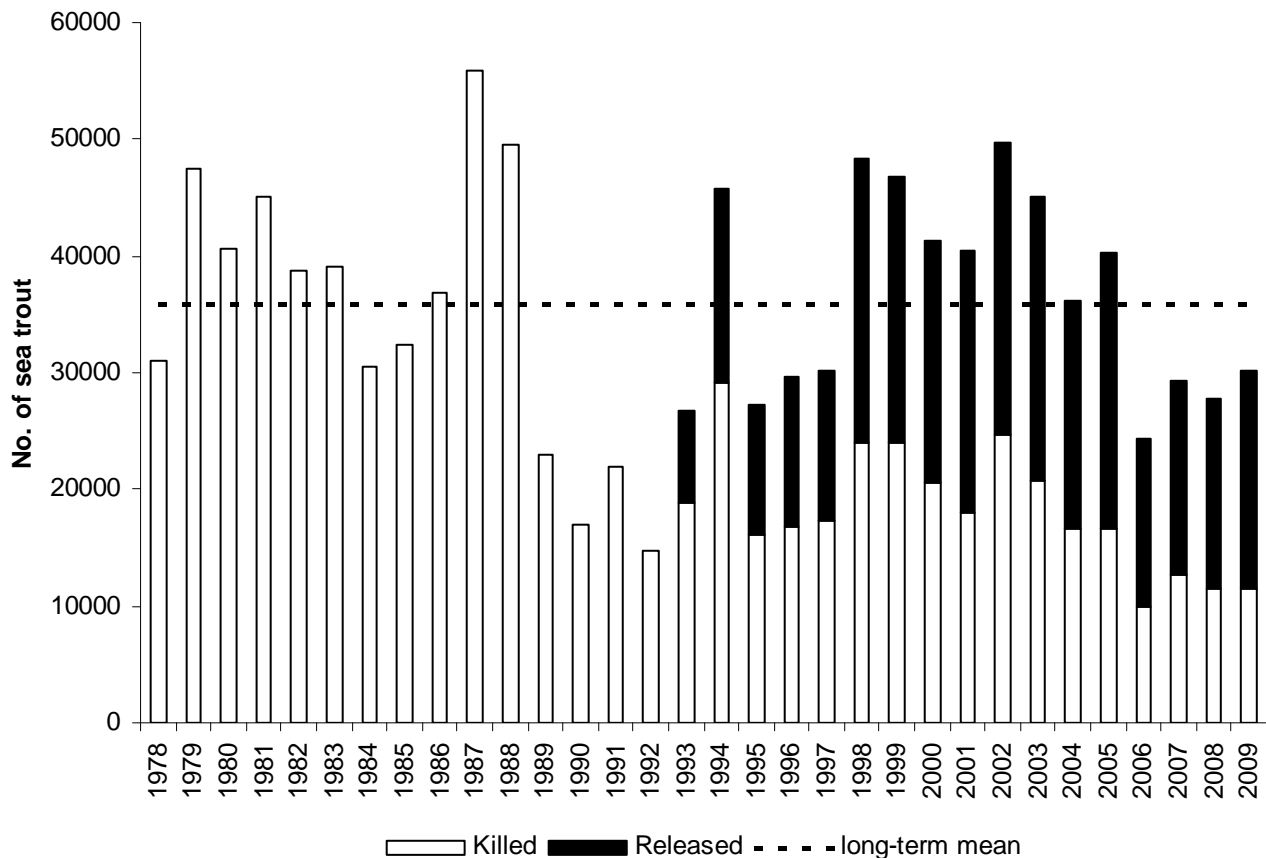


Figure 5 Total declared sea trout rod catch for England & Wales, 1978-2009 (shaded area indicates fish caught and released).

Section 5

Regional catch summaries
(2009, 2008 and 5- year mean)

Table 4 Summary of salmon net and fixed engine catches by Region

	2009	2008	5-year mean (2004-2008)	% change (+/-) 2009 on 2008	% change (+/-) 2009 on 5-yr mean
North East	5,395	7,091	8,180	-24%	-34%
Anglian	3	7	20	-57%	-85%
Thames	-	-	-	-	-
Southern	-	-	-	-	-
South West	223	587	628	-51%	-55%
Midlands	883	871	824	1%	7%
EA Wales	93	160	709	-42%	-87%
North West	846	981	2987	-14%	-72%

Table 5 Summary of sea trout net and fixed engine catches by Region

	2009	2008	5-year mean (2004-2008)	% change (+/-) 2009 on 2008	% change (+/-) 2009 on 5-yr mean
North East	26,957	24,865	20,688	8%	30%
Anglian	688	714	1,129	-4%	-39%
Thames	-	-	-	-	-
Southern	0	0	2.2	-	-100
South West	688	694	909	-1%	-24%
Midlands	7	-	0	100	100
EA Wales	1480	1022	1086	45%	36%
North West	935	679	809	38%	16%

Table 6 Summary of salmon rod catches by Region

	2009	2008	5-year mean (2004-2008)	% change (+/-) 2009 on 2008	% change (+/-) 2009 on 5-yr mean
North East	4,421	5,634	5,800	-22%	-24%
Anglian	-	-	-	-	-
Thames	0	0	0	-	-
Southern	391	711	518	-45%	-25%
South West	1,648	2,686	2,217	-39%	-26%
Midlands	213	294	336	-28%	-37%
EA Wales	3,356	6,122	5,335	-45%	-37%
North West	5,532	8,065	8,091	-31%	-32%

Table 7 Summary of sea trout rod catches by Region

	2009	2008	5-year mean (2004-2008)	% change (+/-) 2009 on 2008	% change (+/-) 2009 on 5-yr mean
North East	3,318	5,323	4,644	-38%	-29%
Anglian	3	-	-	-	-
Thames	0	0	2	0%	-100%
Southern	622	495	574	26%	8%
South West	7,194	4,353	5,413	64%	32%
Midlands	57	25	38	128%	50%
EA Wales	13,556	12,970	15,492	4%	-12%
North West	5,608	4,541	5,291	23%	6%

Section 5

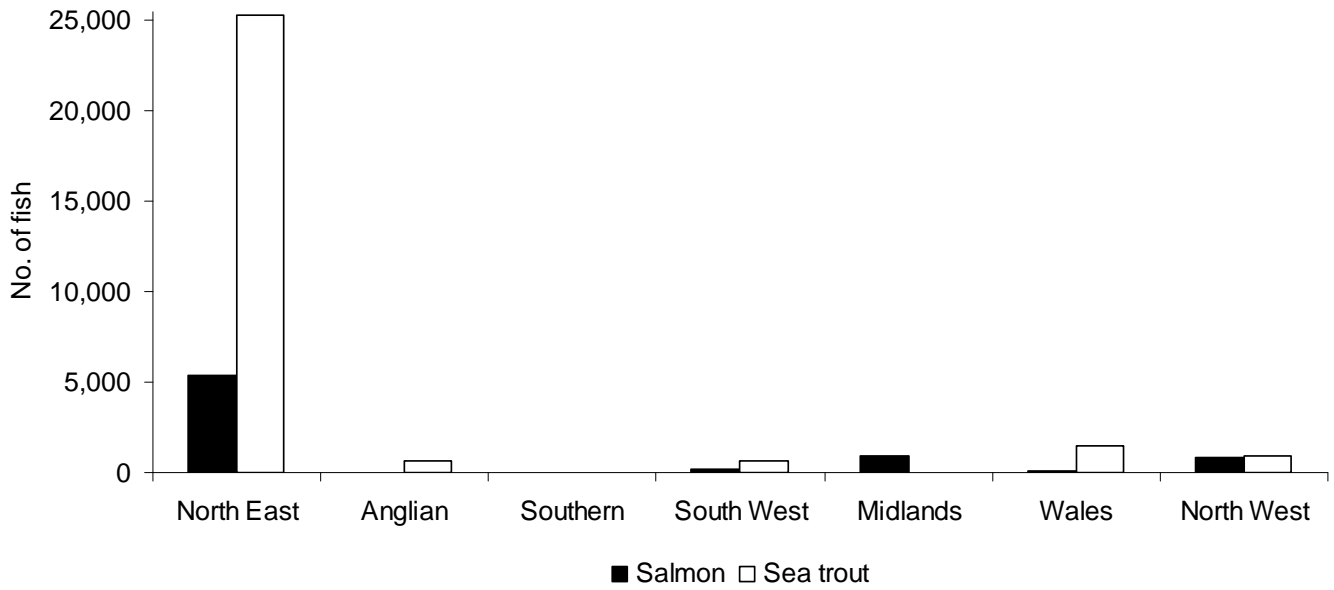


Figure 6 Declared salmon and sea trout net and fixed engine catches by Region, 2009.

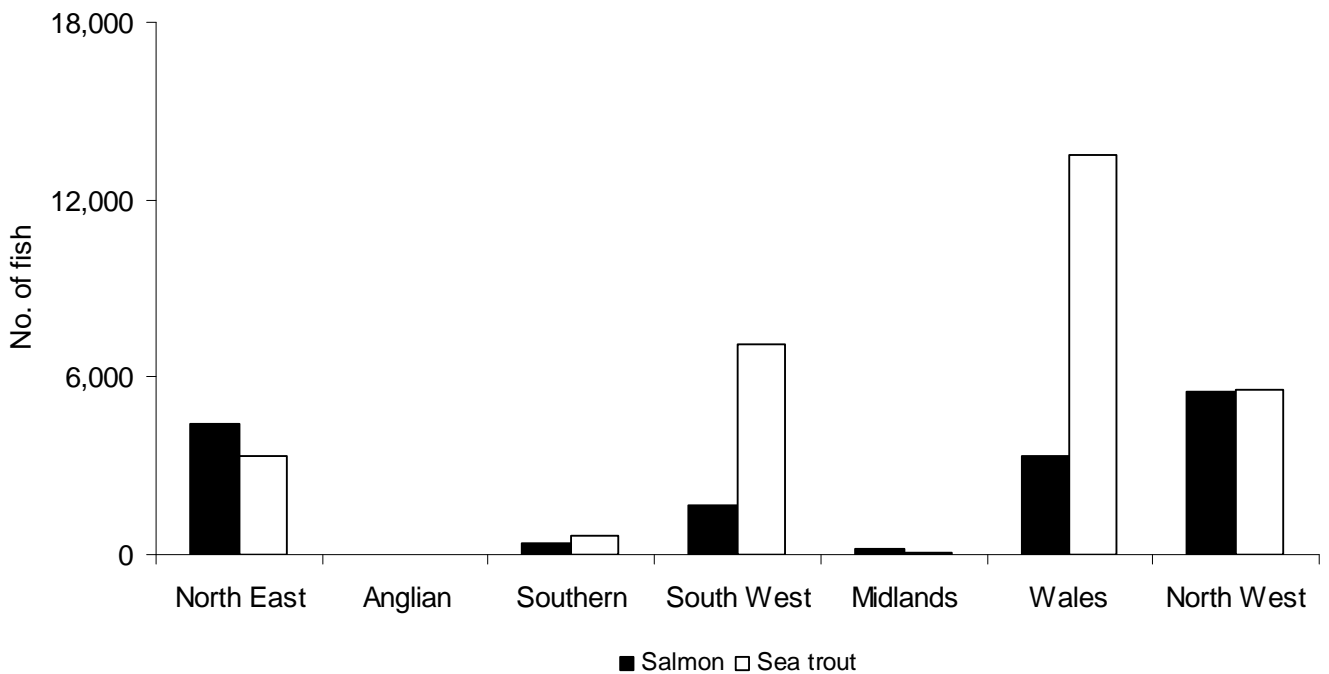


Figure 7 Declared salmon and sea trout rod catches by Region, 2008.

Tables

Table 1	Net Fishing licences- number & value 2009
Table 2	Eel and elver licence sales and catches, 2009 season
Table 3	National Rod Fishing Licences – Number and Value valid from 1 April 2009- 31 March 2011
Table 4	Net Season & Weekly Closure Times- Salmon & Sea Trout – 2009 Season
Table 5	Rod Fishing Season for Salmon & sea Trout – including method restrictions & bag limits 2009
Table 6	Main Updates for Rod & Net fisheries in 2009
Table 7	Salmon Net Catches – 2009 Season
Table 8	Sea Trout Net Catches – 2009 Season
Table 9	Salmon Rod Catches (released totals in brackets) – 2009 Season
Table 10	Sea Trout Rod Catches (released totals in brackets) – 2009 Season
Table 11	Rod Caught Salmon & Sea Trout, Average Weight (Kg)- 2009 season
Table 12	Number of rod caught salmon in weight categories (lb & kg)- 2009
Table 13	Number of rod caught sea trout in weight categories (lb & kg)- 2009
Table 14	Summary of salmon net catches, 1999- 2009
Table 15	Summary of sea trout net catches, 1999- 2009
Table 16	Summary of salmon rod catch, 1999- 2009
Table 17	Summary of sea trout rod catch, 1999- 2009
Table 18	Reported Net Effort data for Salmon & Sea Trout- 2009
Table 19	Reported Rod Effort Data for Salmon & Sea Trout – 2009
Table 20	Estimated Proportions of Grilse & Multi- Sea Winter (MSW) Salmon in Declared Rod Catch- 2009
Table 21	Salmon Stocking – number of eggs, fry, parr and smolts released – 2009
Table 22	Sea Trout Stocking – number of eggs, fry, parr and smolts released – 2009

Section 6

Table 1 Net Fishing licences- number & value 2009

Environment Agency Region	Fishing Method	Number (a)	Duty (£)	Number of endorsees	Value (£) (b)
North East Northumbria Area	Coastal (N) drift and T nets	4	1275.00		5100.00
	Coastal (N) drift nets	13	1171.00	30	15229.00
	Coastal (N) T nets	22	818.00	56	18007.20
	Coastal (S) T nets	1	818.00	1	818.20
	Total	40		87	39,154.40
North East Yorkshire Area	Coastal drift nets	2	917.00	3	1834.60
	Coastal T or J nets	30	818.00	65	24553.00
	Total	32		68	26,387.60
Anglian	Drift nets	23	76.00	49	1757.80
	Other nets (various)	6	76.00	14	458.80
	Total	29		63	2,216.60
Southern	Seine nets	1	76.00	0	76.00
	Total	1		0	76.00
South West	Seine nets	4	370.00	9	1481.80
	Total	4		9	1,481.80
South West Devon & Cornwall	Seine nets (single river)	27	333.00	47	9000.40
	Drift nets (Camel)	6	304.00	6	1825.20
	Total	33		53	10,825.60
Midlands	Lave nets (half season)	25	58.00	0	1450.00
	Seine nets	3	277.00	3	831.60
	Fixed Engine ranks:				0.00
	1200 Putchers (24 units of 50)	4	76.00	0	1728.00
	Total	32		3	4,009.60
Environment Agency Wales	Compass nets	6	93.00	6	559.20
	Coracle nets	17	241.00	47	
	Wade nets	1	76.00	2	76.40
	Seine nets	14	565.00	69	7923.80
	Lave nets	6	76.00	0	456.00
	Total	44		124	9,015.40
North West	Haaf nets (Solway)	66	139.00	19	9177.80
	Drift nets (Ribble)	5	412.00	6	2061.20
	Haaf nets (Lune)	12	277.00	4	3324.80
	Drift nets (Lune)	7	565.00	10	3957.00
	Lave nets (Kent)	7	139.00	0	973.00
	Lave nets (Leven)	2	139.00	1	278.20
	Coop nets (Eden)	3	356.00	0	1068.00
	Total	102		40	20,840.00
England & Wales	Total	317		447	114,007.00
Key: (a) Numbers represent the number of licensees, except for data in parentheses which represent numbers of licensed components on which duty is paid. (b) Value includes endorsee fees (@ £0.20 each).					

Section 6

Table 2

Eel and elver licence sales and catches, 2009 season

Environment Agency Region	LICENCES					CATCHES (Kg)			
	Method	Number of licences (a)	No. instruments	Duty (£)	Value (£)	Method	Elver	Yellow Eel	Silver eel
North East	Small wingless traps (10)	8	130	12.00	156.00	Small wingless traps (10)	n/a	293	109
	Fyke nets	4	15	6.00	90.00	Fyke nets	n/a	21	5
	Total	12	145		246.00	Total	0	314	114
Anglian	Small wingless traps (10)	12	223	12.00	267.60	Small wingless traps (10)	n/a	979	0
	Fyke nets	41	666	6.00	3996.00	Fyke nets	n/a	5637	592
	Total	53	889		4,263.60	Total	0	6616	592
Thames	Small wingless traps (10)	2	23	12.00	27.60	Small wingless traps (10)	n/a	0	4317
	Fyke nets	18	337	6.00	2022.00	Fyke nets	n/a	5438	178
	Total	20	360		2,049.60	Total	0	5438	4495
Southern	Small wingless traps (10)	4	32	12.00	38.40	Small wingless traps (10)	n/a	190	0
	Fyke nets	24	736	6.00	4416.00	Fyke nets	n/a	6783	1736
	Fixed trap	5	6	113.00	678.00	Fixed trap	0	56	1446
	Total	33	774		5,132.40	Total	0	7029	3182
South West	Small wingless traps (10)	4	40	12.00	48.00	Small wingless traps (10)	n/a	5	0
	Fyke nets	18	188	6.00	1128.00	Fyke nets	n/a	2541	522
	Fixed trap	5	5	113.00	565.00	Fixed trap	n/a	0	1005
	Elver dip net	110	111	73.00	8103.00	Elver dip net	194	n/a	n/a
	Total	137	344		9,844.00	Total	194	2546	1527
Midlands	Small wingless traps (10)	6	60	12.00	72.00	Small wingless traps (10)	n/a	37	1
	Fyke nets	7	33	6.00	198.00	Fyke nets	n/a	105	5
	Elver dip net	271	272	73.00	19856.00	Elver dip net	61	n/a	n/a
	Total	284	365		20,126.00	Total	61	142	6
Environment Agency Wales	Small wingless traps (10)	7	87	12.00	104.40	Small wingless traps (10)	n/a	0	14
	Fyke nets	15	96	6.00	576.00	Fyke nets	n/a	92	43
	Elver dip net	80	80	73.00	5840.00	Elver dip net	14	n/a	n/a
	Total	102	263		6,520.40	Total	14	92	57
North West	Small wingless traps (10)	6	91	12.00	109.20	Small wingless traps (10)	n/a	0	0
	Fyke nets	14	64	6.00	384.00	Fyke nets	n/a	114	80
	Fixed trap	1	3	113.00	339.00	Fixed trap	n/a		
	Elver dip net	21	21	73.00	1533.00	Elver dip net	20	n/a	n/a
	Total	42	179		2,365.20	Total	20	114	80
England & Wales	Total	683	3,319		50,547.20	Total	289	22,290	10,051

Section 6

Table 3 National Rod Fishing Licences – Number and Value valid from 1 April 2009- 31 March 2010

Environment Agency Region	Non-migratory trout and coarse fish						Salmon and sea trout						All licences	
	Full Duty £26.00	Concession Duty £17.25	Junior Duty £5.00	8 Day Duty £9.50	1 Day Duty £3.50	Total	Full Duty £70.00 (a)	Concession Duty £46.50 (a)	Junior Duty £5.00	8 Day Duty £22.50	1 Day Duty £7.75	Total	Total Number	(%)
North East	90,229	24,152	16,869	5,578	55,843	192,671	2,987	1,248	495	273	1,432	6,435	199,106	14%
Anglian	122,065	29,155	22,361	7,961	55,714	237,256	323	196	246	311	374	1,450	238,706	16%
Thames	125,718	24,934	19,860	9,450	72,351	252,313	1,157	344	414	612	1,103	3,630	255,943	17%
Southern	63,367	14,087	12,742	5,469	39,884	135,549	478	251	259	249	324	1,561	137,110	9%
South West	48,859	11,626	8,973	3,477	26,831	99,766	1,890	889	291	204	867	4,141	103,907	7%
Midlands	140,113	40,299	23,557	7,408	68,265	279,642	1,225	764	314	330	693	3,326	282,968	19%
E.A. Wales	31,570	8,418	6,917	1,758	18,650	67,313	4,119	2,186	734	178	598	7,815	75,128	5%
North West	82,826	21,334	14,612	4,875	32,839	156,486	3,651	1,836	584	264	1,158	7,493	163,979	11%
Unknown	1,639	331	394	2,635	3,490	8,489	135	69	23	135	248	610	9,099	1%
Total	706,386	174,336	126,285	48,611	373,867	1,429,485	15,965	7,783	3,360	2,556	6,797	36,461	1,465,946	
Total Value (£)	£18,366,036	£3,007,296	£631,425	£461,805	£1,308,535	23,775,096	£1,117,550	£361,910	£16,800	£57,510	£52,677	£1,606,446	£25,381,542	

(a) Full and concession salmon and sea trout licences include upgrades from non-migratory trout and coarse fish licences.

Section 6

Table 4 Net Season & Weekly Closure Times- Salmon & Sea Trout – 2009 Season

Environment Agency Region	River/ Fishery	Fishing Method	Season inclusive dates (see below)	Weekly closure times	Voluntary Closures/Buyouts Other
North East Northumbria	Coastal (N)	Drift nets	1.6 - 31.8	1800 Fri to 0600 Mon	Nightly close time 2000 to 0400
		T nets (a)	26.3 - 31.8	1800 Fri to 0600 Mon	Nightly close time 2000 to 0400
	Coastal (S)	Drift nets	1.6 - 31.8	1800 Fri to 0600 Mon	Nightly close time 2000 to 0400
		T nets (a)	26.3 - 31.8	1800 Fri to 0600 Mon	Nightly close time 2000 to 0400
North East Yorkshire	Coastal	Drift nets	1.6 - 31.8	1800 Fri to 0600 Mon	Nightly close time 2000 to 0400
		T or J nets (a)	26.3 - 31.8	2000 Fri to 0600 Mon	
Anglian	Coastal	Drift nets (a)	1.4 - 30.9	0600 Sun to 2400 Mon	
		Other nets (a)	1.4 - 30.9	0600 Sun to 2400 Mon	
Southern	Hants area	Seine nets	15.2 - 31.7	0600 Sat to 0600 Mon	
South West	Avon + Stour	Seine nets	1.6 - 31.7	0600 Sat to 0600 Mon & 2100 - 0500 Wed, Thu, Fri	All salmon caught to be released
	Poole Harbour	Seine net	1.6 - 31.7		All salmon caught to be released
	Parrett	Dip nets	1.6 - 31.7	0600 Sat to 0600 Mon	
		Putcher ranks	1.6 - 31.7	no closure period	
	Exe	Seine nets (upper reach)	1.6 - 14.8	0600 Sat to 0600 Mon	Partial buyback arrangements
	Exe	Seine nets (lower reach)	1.6 - 14.8	0600 Sat to 0600 Mon	complete buy out- Exe mitigation group
	Teign	Seine nets (a)	15.3 - 31.7	0600 Sat to 0600 Mon	Partial buy out
	Dart	Seine nets (a)	15.3 - 16.8	0600 Sat to 0600 Mon	Partial buy out
	Avon	Fixed Engine	1.6 - 15.9	0600 Sat to 0600 Mon	Licence purchased by SW Region and not used
	Camel	Drift nets	1.6 - 31.8	0600 Sat to 0600 Mon	Buyout from 1/6 to 31/8
	Tavy	Seine nets	1.6 - 31.8	0600 Fri to 0600 Mon (2.3 - 31.5)	Buyout - complete season
	Tamar	Seine nets	1.6 - 31.8	&	Buyout - complete season
	Lynher	Seine nets	1.6 - 31.8	0600 Sat to 0600 Mon (1.6 - 31.8)	Buyout - complete season
	Fowey	Seine nets (a)	2.3 - 31.8	0600 Sat to 0600 Mon	Buyout- complete season
Taw/Torridge	Seine nets	1.6 - 31.7	0600 Fri to 0600 Mon	Partial Buyout	
Lyn	Fixed Engine	1.6 - 31.8	0600 Sat to 0600 Mon	Right to fish bought by EA in 2003.	
Midlands	Severn	Seine nets	1.6 - 31.8	1200 Sat to 0600 Mon	
		Lave nets	1.6 - 31.8	1200 Sat to 0600 Mon	
		Fixed Engines	1.6 - 15.8	no closure period	
Environment Agency Wales	Tywi	Coracle nets (a)	1.3 - 31.7	0600 Sat to 1200 Mon	Fishery closed January 2005 Fishery closed January 2005 Fishery closed January 2005 Fishery closed January 2005 Fishery closed January 2005 Fishery closed January 2005 Fishery closed January 2005 Fishery closed January 2005 Fishery closed January 2005 Fishery closed January 2005 Fishery closed January 2005 Fishery closed January 2005 Fishery closed January 2005 Fishery closed January 2005 Fishery closed January 2005 Fishery closed January 2005 Fishery closed January 2005 Fishery closed January 2005 Fishery closed January 2005 Fishery closed January 2005
	Taf	Wade net	1.6 - 31.7	0600 Sat to 1200 Mon	
	S.W.Coastal	Coracle net (a)	1.3 - 31.7	0600 Sat to 1200 Mon	
		Wade nets	1.6 - 31.8	0600 Sat to 0600 Mon	
	E+W.Cleddau	Seine nets	1.6 - 31.8	0600 Sat to 0600 Mon	
		Compass nets	1.6 - 31.8	0600 Sat to 1200 Mon	
	Nevern	Seine net (a)	1.4 - 31.8	0600 Sat to 1200 Mon	
	Teifi	Seine nets (a)	1.4 - 31.8	0600 Sat to 1200 Mon	
		Coracle nets (a)	1.4 - 31.8	0600 Sat to 1200 Mon	
	Dyfi	Seine nets (a)	1.4 - 31.8	0600 Sat to 0600 Mon	
	Dysynni	Seine net	1.6 - 31.8	0600 Sat to 0600 Mon	
	Mawddach	Seine nets	1.6 - 31.8	0600 Sat to 0600 Mon	
	Glaslyn	Seine nets	1.6 - 31.8	0600 Sat to 0600 Mon	
	Dwyfawr	Seine nets	1.6 - 31.8	0600 Sat to 0600 Mon	
	Seiont/Gwyrffai	Seine nets	1.6 - 31.8	0600 Sat to 0600 Mon	
	Ogwen	Seine nets	1.6 - 31.8	0600 Sat to 0600 Mon	
	Conwy	Basket trap	1.6 - 31.8	no closure period	
		Seine nets	1.6 - 31.8	0600 Sat to 0600 Mon	
	Clwyd	Sling nets	1.6 - 31.8	2400 Thur to 2400 Sun	
	Dee	Trammel nets	1.6 - 31.8	2400 Thur to 2400 Sun	
Seine nets		1.6 - 31.8	2400 Thur to 2400 Sun		
North West	Ribble	Drift nets	1.6 - 31.8	0600 Sat to 0600 Mon	Fishery closed 2005
	Lune	Haaf nets	1.6 - 31.8	0600 Sat to 0600 Mon	
		Drift nets	1.6 - 31.8	0600 Sat to 0600 Mon	
	Kent	Seine net	1.6 - 31.8	0600 Sat to 0600 Mon	
		Lave nets	1.6 - 31.8	0600 Sat to 0600 Mon	
	Leven	Lave nets	1.7 - 31.8	0600 Sat to 0600 Mon	
	S&W Cumbria	Drift nets	1.6 - 31.8	0600 Sat to 0600 Mon	
	Eden	Coops	1.6 - 31.8	0600 Sat to 0600 Mon	
	Solway	Haaf nets	1.6 - 9.9	2200 Fri to 1000 Mon; daily 2200-1000	

(a) Sea trout fisheries exempted from national byelaws. All salmon caught before 1 June to be released alive.

Section 6

Table 5 Rod Fishing Season for Salmon & sea Trout – including method restrictions & bag limits 2009

Environment Agency Region	River	Salmon Season (inclusive dates)	Sea trout Season (inclusive dates)	*Method Restrictions	*Bag limits/Catch and Release etc.
North East	Aln	1.2 - 31.10	3.4 - 31.10		
	Coquet	1.2 - 31.10	3.4 - 31.10		
	Tyne	1.2 - 31.10	3.4 - 31.10		
	Wear	1.2 - 31.10	3.4 - 31.10		
	Tees	1.2 - 31.10	3.4 - 31.10		
	Esk (Yorks.) Ouse (Yorks.)	6.4 - 31.10 6.4 - 31.10	6.4 - 31.10 6.4 - 31.10		
Anglian Region		1.4 - 28.9	1.4 - 28.9		2 bag limit per day
Thames	Thames	1.4 - 30.9	1.4 - 30.9		2 salmon bag limit a day
Southern	Test	17.1 - 2.10	1.5 - 31.10	Voluntary worm ban throughout season	Catch & Release all season for salmon (local agreement)
	Itchen	17.1 - 2.10	1.5 - 31.10	Voluntary worm ban throughout season	Catch & Release all season for salmon (local agreement)
South West	Avon (Hants.)	1.2 - 31.8	15.4 - 31.10	artificial fly only before 15/5	Catch & Release all season for salmon (local agreement)
	Piddle	1.3 - 31.8	15.4 - 31.10	artificial fly only before 15/5	
	Frome	1.3 - 31.8	15.4 - 31.10	artificial fly only before 15/5	
	Axe	15.3 - 31.10	15.4 - 31.10	no shrimp, prawn, worm or maggot. Fly only after 31/7 below Axbridge	
	Exe	14.2 - 30.9	15.3 - 30.9	no worm or maggot	Fly only and mandatory catch and release during trial extension period
	Teign	1.2 - 30.9	15.3 - 31.10	no worm or maggot before 1/6	
	Dart	1.2 - 30.9	15.3 - 30.9	no worm or maggot. No shrimp/prawn exc. below Staverton Br.	
	Avon (Devon)	15.4 - 30.11	15.4 - 30.9	no worm or maggot	
	Plym	1.4 - 15.12	3.3 - 30.9	no worm, maggot, shrimp or prawn after 31/8	
	Tavy	1.3 - 14.10	3.3 - 30.9	no worm, maggot, shrimp or prawn after 31/8	
	Tamar	1.3 - 14.10	3.3 - 30.9	no worm, maggot, shrimp or prawn after 31/8	
	Lynher	1.3 - 14.10	3.3 - 30.9	no worm, maggot, shrimp or prawn after 31/8	
	Fowey	1.4 - 15.12	1.4 - 30.9		
	Camel	1.4 - 15.12	1.4 - 30.9		
	Taw	1.3 - 30.9	15.3 - 30.9	no shrimp, prawn, worm or maggot. Fly only 1/4 to 31/5	2 (2) salmon a day, 3 (2) a week and 10 (5, 7) in a season, ST 5 (2), 15 (7) and 40 (20) respectively
	Torridge	1.3 - 30.9	15.3 - 30.9	no shrimp, prawn, worm or maggot. Fly only 1/4 to 31/5	(2 salmon limit before June 1st) & return of all salmon > 70 cm after Aug 1st.
Lyn	1.2 - 31.10	15.3 - 30.9	no worm or maggot before 1/6		
Yealm	1.4 - 15.12	3.3 - 30.9	no worm, maggot, shrimp or prawn after 31/8		
Midlands	Severn	1.2 - 7.10	18.3 - 7.10	no float fishing with lure or bait	
Environment Agency Wales	Wye	3.3 - 17.10 (a)	3.3 - 17.10 (a)	Fly only 1.9 to 17.10. No bait all season	
	Usk	3.3 - 17.10	3.3 - 17.10	Fly only 3.3 - 1.6. Fly and Spin 15.9 - 17.10	
	Taff	20.3 - 17.10	20.3 - 17.10	Fly and Spin 20.3 - 15.4 & 1.10 - 17.10	
	Ogmore	20.3 - 17.10	20.3 - 17.10	Fly and Spin 20.3 - 15.4 & 1.10 - 17.10	
	Afan	20.3 - 17.10	20.3 - 17.10	Fly and Spin 20.3 - 15.4 & 1.10 - 17.10	
	Neath	20.3 - 17.10	20.3 - 17.10	Fly and Spin 20.3 - 15.4 & 1.10 - 17.10	
	Tawe	20.3 - 17.10	20.3 - 17.10	Fly and Spin 20.3 - 15.4 & 7.10 - 17.10	
	Loughor	20.3 - 17.10	20.3 - 17.10	Fly and Spin 20.3 - 15.4 & 7.10 - 17.10	
	Tywi	1.4 - 17.10	1.4 - 17.10	Fly and Spin 7.10 - 17.10	daily bag of 2 salmon & 4 sea trout, weekly bag of 5 salmon. C&R 8.10 to 17.10
	Taf	1.4 - 17.10	1.4 - 17.10	Fly and Spin 7.10 - 17.10	daily bag of 2 salmon & 4 sea trout, weekly bag of 5 salmon. C&R 8.10 to 17.10
	E+W.Cleddau	1.4 - 17.10	1.4 - 17.10	Fly and Spin 7.10 - 17.10	daily bag of 2 salmon & 4 sea trout, weekly bag of 5 salmon. C&R 8.10 to 17.10
	Nevern	1.4 - 17.10	1.4 - 17.10	Fly and Spin 7.10 - 17.10	daily bag of 2 salmon & 4 sea trout, weekly bag of 5 salmon
	Teifi	1.4 - 17.10	1.4 - 17.10	Fly and Spin 7.10 - 17.10	daily bag of 2 salmon & 4 sea trout, weekly bag of 5 salmon
	Aeron	1.4 - 17.10	1.4 - 17.10	Fly and Spin 7.10 - 17.10	daily bag of 2 salmon & 4 sea trout, weekly bag of 5 salmon
	Ystwyth	1.4 - 17.10	1.4 - 17.10	Fly and Spin 7.10 - 17.10	daily bag of 2 salmon & 4 sea trout, weekly bag of 5 salmon
	Rheidol	1.4 - 17.10	1.4 - 17.10	Fly and Spin 7.10 - 17.10	daily bag of 2 salmon & 4 sea trout, weekly bag of 5 salmon
	Dyfi	20.3 - 17.10 (some sections to 31.10)	20.3 - 17.10 (some sections to 31.10)	Fly and Spin 20.3 - 15.4 & 7.10 - 31.10	Catch & Release salmon and sea trout 18.10 to 31.10
	Dysynni	20.3 - 17.10	20.3 - 17.10	Fly and Spin 20.3 - 15.4 & 7.10 - 17.10	
	Mawddach	20.3 - 17.10	20.3 - 17.10	Fly and Spin 20.3 - 15.4 & 7.10 - 17.10	
	Arto	20.3 - 17.10	20.3 - 17.10	Fly and Spin 20.3 - 15.4 & 7.10 - 17.10	
	Dwyrdd	20.3 - 17.10 (some sections to 31.10)	20.3 - 17.10 (some sections to 31.10)	Fly and Spin 20.3 - 15.4 & 7.10 - 31.10	Catch & Release salmon and sea trout 18.10 to 31.10
	Glaslyn	20.3 - 17.10	20.3 - 17.10	Fly and Spin 20.3 - 15.4 & 7.10 - 17.10	
	Dwyfawr	20.3 - 17.10	20.3 - 17.10	Fly and Spin 20.3 - 15.4 & 7.10 - 17.10	
	Llyfni	20.3 - 17.10	20.3 - 17.10	Fly and Spin 20.3 - 15.4 & 7.10 - 17.10	
	Gwyrfai	20.3 - 17.10	20.3 - 17.10	Fly and Spin 20.3 - 15.4 & 7.10 - 17.10	
	Seiont	20.3 - 15.11	20.3 - 15.11	Fly and Spin 20.3 - 15.4 & 7.10 - 15.11	Catch & Release salmon and sea trout 18.10 to 15.11
	Ogwen	20.3 - 17.10 (some sections to 31.10)	20.3 - 17.10 (some sections to 31.10)	Fly and Spin 20.3 - 15.4 & 7.10 - 31.10	Catch & Release salmon and sea trout 18.10 to 31.10
	Conwy	20.3 - 17.10 (some sections to 31.10)	20.3 - 17.10 (some sections to 31.10)	Fly and Spin 20.3 - 15.4 & 7.10 - 31.10	Catch & Release salmon and sea trout 18.10 to 31.10
	Clwyd	20.3 - 17.10	20.3 - 17.10	Fly and Spin 20.3 - 1.6, Fly only 1.10 - 17.10	
	Dee	20.3 - 17.10	20.3 - 17.10	Fly only 20.3 - 14.4, Fly and Spin 15.4 - 17.10	

Section 6

Table 5 (continued)

Rod Fishing Season for Salmon & sea Trout – including method restrictions & bag limits 2009

Environment Agency Region	River	Salmon Season (inclusive dates)	Sea trout Season (inclusive dates)	*Method Restrictions	*Bag limits/Catch and Release etc.
North West	Ribble	1.2 - 31.10	1.4 - 30.9		Byelaw (28/02/07) No more than 2 salmon can be killed per season Byelaw (NW-14/02/00) no more than four salmon may be killed during the season. Byelaw (NW-08/05/03) requiring release of all salmon after capture. Byelaw (NW-08/05/03) requiring release of all salmon after capture. Salmon:16/6-14/10 daily bag 2,10/9-14/10 C&R (F).Sea trout:1/4-30/9 daily bag 2,10/9-30/9 C&R(F) Salmon:16/6-14/10 daily bag 2,10/9-14/10 C&R (F).Sea trout:1/4-30/9 daily bag 2,10/9-30/9 C&R(F)
	Wyre	1.2 - 31.10	1.4 - 30.9		
	Lune	1.2 - 31.10	1.4 - 30.9		
	Kent	1.2 - 31.10	1.4 - 30.9		
	Leven	1.2 - 31.10	1.4 - 30.9		
	Crake	1.2 - 31.10	1.4 - 30.9		
	Duddon	1.2 - 31.10	1.4 - 30.9		
	Esk (Cumbrian)	1.2 - 31.10	1.4 - 30.9		
	Irt	1.2 - 31.10	1.4 - 30.9		
	Calder	1.2 - 31.10	1.4 - 30.9		
	Ehen	1.2 - 31.10	1.4 - 30.9		
	Derwent	1.2 - 31.10	1.4 - 30.9		
	Ellen	1.2 - 31.10	1.4 - 30.9		
	Eden	15.1 - 14.10	1.4 - 30.9		
	Esk (Border)	1.2 - 31.10	1.4 - 30.9		
Others	1.2 - 31.10	1.4 - 30.9			
Notes	(a) Season 3.3 to 25.10 Rivers Irfon, Ithon and main River Wye upstream of Llanwrthwl Bridge Note: EA Wales - variations apply to Anglesey and Llyn Paninsula (check local byelaws).			* National spring salmon byelaws apply Please always check local byelaws and club rules before fishing.	

Table 6 Main Updates for Rod & Net fisheries in 2009

Area	Byelaw/ NLO
England & Wales	Sale of rod-caught salmon and sea trout has been banned All net-caught fish to be tagged and recorded. “Handling salmon (and sea trout) in suspicious circumstances” includes “selling” and extends the provisions to other fish.
Wales	The Dee nets (draft and trammel) have now been fully bought out (no nets operating since 2009) so no netting permitted until the current NLO expires in 2015 Wye lave nets (Blackrock) are limited by a lease, held by Environment Agency Wales, to 8 licences plus 1 trainee and the whole fishery is capped at 15 fish per season. (Introduced
Midlands	New NLOs that capped the seine net fishery at 3 and the lave nets at 25.

Section 6

Table 7 Salmon Net Catches – 2009 Season

Environment Agency Region	River/ Fishery	Fishing Method	No. Lics	Phase Out NLO	Feb	Mar	Apr	May	Jun	Jul	Aug	Sep	Un-Known	Total Number	Total Weight (kg)	Average Weight (kg)	
North East Northumbria	Coastal (N)	Drift nets	13 (a)	X	-	-	-	-	601	502	1,191	-	0	2,294	8,832	4	
		T nets	26 (a)		-	0	0	0	687	555	1,363	-	0	2,605	9,325	4	
	Coastal (S)	Drift nets	0	X	-	-	-	-	-	-	-	-	-	0	-	-	
		T nets	1		-	0	0	0	0	4	30	-	-	34	233	7	
	North East Yorkshire	Coastal	Drift nets	2	X	-	-	-	-	88	66	142	-	0	296	1,217	4
T or J nets*			30		-	0	0	0	47	45	70	4	0	166	613	4	
	Whole area	Total	72		-	0	0	0	1,423	1,172	2,796	4	0	5,395	20,220	4	
Anglian	Coastal	Drift nets	23	X	-	-	0	1	0	1	1	0	0	3	35	12	
		Other nets (var.)	6	X	-	-	0	0	0	0	0	0	0	0	0	0	
	Whole area	Total	29		-	-	0	1	0	1	1	0	0	3	35	12	
Southern	Hants area	Seine nets	1		-	-	-	-	0	0	-	-	0	0	0	0	
	Whole area	Total	1		-	-	-	-	0	0	-	-	0	0	0	0	
South West	Avon + Stour**	Seine nets	3		-	-	-	-	36	22	-	-	0	58	293	5	
	Poole Harbour*	Seine net	1		-	-	-	-	2	2	-	-	0	4	13	3	
	Exe	Seine nets	11	X	-	-	-	-	34	33	25	-	0	92	360	4	
	Teign	Seine nets	3	X	-	-	-	-	33	33	-	-	0	66	262	4	
	Dart	Seine nets	3	X	-	-	-	-	14	14	14	-	0	42	151	4	
	Camel	Drift nets	6		-	-	-	-	6	0	0	-	0	6	25	0	
	Tavy	Seine nets	2		-	-	-	-	0	0	0	0	0	0	0	0	
	Tamar	Seine nets	3		-	-	-	-	0	0	0	0	0	0	0	0	
	Lynher	Seine nets	1		-	-	-	-	0	0	0	0	0	0	0	0	
	Fowey	Seine nets	1		-	0	0	0	0	0	-	-	0	0	0	0	
	Taw/Torridge	Seine nets	3	X	-	-	-	-	10	7	0	-	0	17	72	4	
	Whole area	Total	37		-	0	0	0	135	111	39	-	0	285	1,176	4	
	Midlands	Severn	Seine nets	3	X	-	-	-	-	2	0	0	-	0	2	12	6
Lave nets			25 (b)	X	-	-	-	-	83	23	9	-	0	115	552	5	
Fixed Engines			4		-	-	-	-	510	196	60	-	0	766	3,536	5	
Whole area		Total	32		-	-	-	-	595	219	69	-	0	883	4,100	5	
Environment Agency Wales	Wye	Lave nets	6		-	-	-	-	4	0	2	-	0	6	25	4	
		Seine nets	3		-	-	-	-	7	1	0	-	0	8	30	4	
		Coracle nets	7		-	-	-	-	26	14	-	-	0	40	179	4	
		River total	10		-	-	-	-	33	15	0	-	0	48	209	4	
	Taf	Wade net	1		-	-	-	-	0	0	0	-	0	0	0	0	
		Coracle net	1		-	-	-	-	0	0	0	-	0	0	0	0	
		River total	2		-	-	-	-	0	0	0	-	0	0	0	0	
		Compass nets	6		-	-	-	-	1	0	0	-	0	1	5	5	
	Nevern	Seine net	1		-	-	-	-	0	0	0	-	0	0	0	0	
		Seine nets	2		-	-	-	-	9	2	2	-	0	13	55	4	
	Teifi	Coracle nets	9		-	-	-	-	7	5	5	-	0	17	73	4	
		River total	11		-	-	-	-	16	7	7	-	0	30	128	4	
		Seine nets	2		-	-	-	-	0	0	0	-	0	0	0	0	
	Dyfi	Seine net	1		-	-	-	-	0	0	0	-	0	0	0	0	
		Seine nets	2		-	-	-	-	0	0	0	-	0	0	0	0	
	Mawddach	Seine nets	0		-	-	-	-	0	0	0	-	0	0	0	0	
		Seine nets	0		-	-	-	-	0	0	0	-	0	0	0	0	
	Glaslyn	Basket trap	0		-	-	-	-	0	0	0	-	0	0	0	0	
		Seine nets	3		-	-	-	-	4	0	4	-	0	8	23	0	
		River total	3		-	-	-	-	0	0	4	-	0	8	23	0	
		Trammel nets	0	X	-	-	-	-	0	0	0	-	0	0	0	0	
	Dee	Draft nets	0	X	-	-	-	-	0	0	0	-	0	-	-	-	
		River total	0		-	-	-	-	0	0	0	-	0	-	-	-	
		Total	44		-	-	-	-	58	22	13	-	0	93	390	4	
	North West	Ribble	Drift nets	5		-	-	-	-	7	50	108	-	0	165	790	5
			Haaf nets	12		-	-	-	-	22	32	63	-	0	117	448	4
			Drift nets	7		-	-	-	-	17	25	87	-	0	129	460	4
Seine net			0	X	-	-	-	-	-	-	-	-	-	-	-	-	
Kent		River total	19		-	-	-	-	39	57	150	-	0	246	908	4	
		Lave nets	7		-	-	-	-	6	10	9	-	0	25	86	0	
		Lave nets	2		-	-	-	-	1	2	0	-	0	3	14	5	
Eden + Esk (Solway)		Haaf nets	66		-	-	-	-	102	117	134	14	0	367	1,406	4	
		Coop nets	3		-	-	-	-	10	16	14	0	0	40	171	4	
Whole area		Total	102		-	-	-	-	165	252	415	14	0	846	3,375	4	
England and Wales			317		-	0	0	1	2,376	1,777	3,333	18	0	7,505	29,296	4	

Key: (a) Separate licences for drift and T nets were issued for the first time in the northern area in 1993. (b) Figures for half- and full-season lave nets combined.
(X) Denotes that a phase out Net Limitation Order (NLO) is in place.

Notes: - Salmon caught pre 1 June released alive
- A dash is used to denote months that fall entirely within the annual close season.
* Special de-compensation was given, for this year only, to allow fishing for 2 weeks in Sept in exchange for 2 weeks in June to assess the impact of nets on birds in Filey Bay.
** Avon/Stour - all salmon released following capture. Poole Harbour - July fish tagged (CEH) and released

Section 6

Table 8

Sea Trout Net Catches – 2009 Season

Environment Agency Region	River/ Fishery	Fishing Method	No. Lics	Phase Out NLO	Un-										Total Number	Total Weight (kg)	Average Weight (kg)
					Feb	Mar	Apr	May	Jun	Jul	Aug	Sep	known				
North East Northumbria	Coastal (N)	Drift nets	13 (a)	X	-	-	-	-	1,090	1,335	403	-	0	2,828	6,271	2	
		T nets	26 (a, b)		-	0	7	727	6,408	3,293	1,144	-	0	11,579	19,328	2	
North East Yorkshire	Coastal (S)	Drift nets	0	X	-	-	-	-	-	-	-	-	0	-	-	-	
		T nets	1 (b)		-	0	0	1	46	14	98	-	0	159	292	2	
	Coastal	Drift nets	2	X	-	-	-	-	371	159	132	-	0	662	1,882	3	
		T or J nets*	30 (b)		-	0	31	646	7,489	2,493	913	157	0	11,729	20,887	2	
	Whole area	Total	72		-	0	38	1,374	15,404	7,294	2,690	157	0	26,957	48,660	2	
Anglian	Coastal	Drift nets	23	X	-	-	23	25	83	114	165	140	0	550	586	1	
		Other nets (var.)	6	X	-	-	18	33	14	25	21	27	0	138	203	1	
		Total	29		-	0	41	58	97	139	186	167	0	688	789	1	
Southern	Beaulieu	Seine nets	1		-	-	-	-	0	0	0	-	0	0	0		
South West	Avon + Stour	Seine nets	3		-	-	-	-	205	52	-	-	0	257	577	2	
		Poole Harbour**	Seine net	1		-	-	-	-	8	0	-	-	0	8	0	0
	Exe	Seine nets	11	X	-	-	-	-	1	1	2	-	0	4	5	1	
		Teign	Seine nets	3 (b)	X	-	0	42	71	56	13	0	-	0	182	258	1
	Dart	Seine nets	3 (b)	X	-	0	48	30	34	39	9	-	0	160	252	2	
	Tavy	Seine nets	2		0	0	0	0	0	0	0	0	0	0	0	0	
	Tamar	Seine nets	3		0	0	0	0	0	0	0	0	0	0	0	0	
	Lynher	Seine nets	1		0	0	0	0	0	0	0	0	0	0	0	0	
	Camel	Drift nets	6		-	-	-	-	0	0	-	-	0	0	0	0	
	Fowey	Seine nets	1 (b)		-	0	0	0	0	0	0	-	0	0	0	0	
	Taw/Torridge	Seine nets	3	X	-	-	-	-	62	15	0	-	0	77	56	1	
		Whole area	Total	37		-	0	90	101	366	120	11	-	0	688	1,148	2
Midlands	Severn	Seine nets	3	X	-	0	0	0	0	0	0	0	0	0	0	0	
		Lave nets	25 (b)	X	-	0	0	0	0	0	0	0	0	0	0	0	
		Fixed Engines	4		-	0	0	0	6	1	0	0	0	7	9	1	
	Whole area	Total	32		-	-	-	0	6	1	-	0	7	9	1		
Environment Agency Wales	Tywi	Seine nets	3 (b)		-	4	79	174	123	3	0	-	0	383	726	2	
		Coracle nets	7 (b)		-	46	215	180	170	26	0	-	0	637	1,674	3	
		River total	10		-	50	294	354	293	29	0	-	0	1,020	2,400	2	
	Taf	Wade net	1		-	-	-	-	0	0	-	-	0	0	0	0	
		Coracle net	1 (b)		-	-	0	0	0	0	-	-	0	0	0	0	
		River total	2		-	-	0	0	0	0	0	-	0	0	0	0	
	E+W.Cleddau	Compass nets	6		-	-	-	-	1	0	0	-	0	1	1	1	
		Teifi	Seine nets	2 (b)		-	-	3	10	72	9	0	-	0	94	138	1
	Dyfi	Coracle nets	9 (b)		-	-	52	110	105	20	12	-	0	299	550	2	
		River total	11		-	-	55	120	177	29	12	-	0	393	688	2	
		Seine nets	2 (b)		-	-	2	6	20	3	0	-	0	31	70	2	
	Dysynni	Seine net	1		-	-	-	-	4	16	0	-	0	20	39	2	
	Mawddach	Seine nets	2		-	-	-	-	0	0	0	-	0	0	0	0	
	Nevern	Seine nets	1		-	-	-	-	11	2	-	-	0	13	12	1	
	Conwy	Seine nets	3		-	-	-	-	2	0	0	-	0	2	4	2	
	Clwyd	Sling nets	0	X	-	-	-	-	-	-	-	-	-	-	-	-	
	Dee	Seine nets	0	X	-	-	-	-	-	-	0	-	0	0	0	0	
		Whole area	Total	38		0	50	351	480	508	79	12	0	0	1,480	3,214	2
North West	Ribble	Drift nets	5		-	-	-	-	4	9	0	-	0	13	63	5	
		Lune	Haaf nets	12		-	-	-	-	180	68	4	-	0	252	340	1
		Drift nets	7		-	-	-	-	34	10	0	-	0	44	104	2	
		Seine net	0	X	-	-	-	-	0	0	0	-	0	0	0	0	
	River total	19		-	-	-	-	214	78	4	-	0	296	444	2		
	Kent	Lave nets	7		-	-	-	-	0	5	0	-	0	5	8	2	
		Leven	Lave nets	2		-	-	-	0	2	0	-	0	2	3	2	
	Solway	Haaf nets	66		-	-	-	-	518	86	12	1	0	617	702	1	
	Eden	Coop nets	3		-	-	-	-	2	0	0	-	0	2	5	3	
		Whole area	Total	102		-	-	-	-	738	180	16	1	0	935	1,225	1
England and Wales			311	0	0	0	50	520	2,013	17,119	7,813	2,915	325	0	30,755	55,045	2
Key:	(a) Separate licences for drift and T nets were issued for the first time in the northern area in 1993. (b) Sea trout fisheries exempted from national byelaws (X) Denotes that a phase out Net Limitation Order (NLO) is in place.																
Notes:	Both the River Wye and Severn net fisheries catch very few sea trout so are not included in this table A dash is used to denote months that fall entirely within the annual close season. * Special decompensation was given, for this year only, to allow fishing for 2 weeks in Sept in exchange for 2 weeks in June to assess the impact of nets on birds in Filey Bay. ** All sea trout tagged (GWCT) and released following capture																

Section 6

Table 9 Salmon Rod Catches (released totals in brackets) – 2009 Season

Environment Agency Region	River	Jan	Feb	Mar	Apr	May	Jun	Jul	Aug	Sep	Oct	Nov	Dec	Un-known	Total Number	
North East	Aln	-						1 (1)	4 (3)	7 (3)	9 (0)	-	-	7 (7)	28 (14)	
	Coquet	-		2 (2)	1 (1)	12 (12)	12 (4)	36 (12)	70 (15)	125 (41)	204 (114)	-	-		462 (201)	
	Tyne	-	18 (18)	29 (29)	28 (27)	67 (67)	115 (61)	226 (85)	490 (193)	781 (391)	1270 (882)	-	-	49 (33)	3073 (1786)	
	Wear	-	1 (1)	3 (2)	1 (1)	3 (3)	15 (7)	49 (21)	89 (40)	177 (90)	362 (253)	-	-	16 (8)	716 (426)	
	Tees	-			2 (2)	0 (0)	2 (2)	2 (1)	15 (7)	18 (13)	30 (25)	-	-		69 (50)	
	Esk (Yorks.)	-	-	-	1 (1)	0 (0)	1 (1)	3 (2)	6 (6)	14 (8)	27 (19)	-	-		52 (37)	
	Ouse (Yorks.)	-	-	-	1 (1)	2 (2)	2 (1)	2 (2)	0 (0)	2 (2)	11 (10)	-	-		20 (18)	
	Other	-													1 (1)	1 (1)
	Total	-	19 (19)	34 (33)	34 (33)	84 (84)	147 (76)	319 (124)	674 (264)	1124 (548)	1913 (1303)	0 (0)	0 (0)	0 (0)	73 (49)	4421 (2533)
Thames	Thames	-	-	-	0 (0)	0 (0)	0 (0)	0 (0)	0 (0)	0 (0)	-	-	-		0 (0)	
Southern	Test (a)	0 (0)	0 (0)	4 (4)	1 (1)	13 (13)	38 (38)	34 (34)	53 (53)	36 (36)	6 (6)	-	-	0 (0)	185 (185)	
	Itchen (a)	0 (0)	0 (0)	0 (0)	0 (0)	0 (0)	14 (14)	35 (35)	59 (59)	90 (90)	7 (7)	-	-	0 (0)	205 (205)	
	Others	0 (0)	0 (0)	0 (0)	0 (0)	0 (0)	0 (0)	1 (1)	0 (0)	0 (0)	0 (0)	-	-	0 (0)	1 (1)	
	Total	0 (0)	0 (0)	4 (4)	1 (1)	13 (13)	52 (52)	70 (70)	112 (112)	126 (126)	13 (13)	0 (0)	0 (0)	0 (0)	0 (0)	391 (391)
South West	Avon (Hants.)	-	0 (0)	1 (1)	8 (8)	28 (28)	20 (20)	9 (9)	9 (7)	-	-	-	-	1 (1)	76 (74)	
	Piddle	-	-	0 (0)	0 (0)	0 (0)	2 (2)	0 (0)	0 (0)	-	-	-	-		2 (2)	
	Frome	-	-	0 (0)	1 (1)	6 (6)	4 (3)	8 (6)	8 (5)	4 (3)	4 (4)	-	-		35 (28)	
	Axe	-	-	0 (0)	1 (1)	2 (2)	0 (0)	0 (0)	3 (3)	6 (6)	7 (5)	-	-		19 (17)	
	Exe	-	9 (9)	5 (5)	2 (2)	15 (15)	44 (34)	74 (36)	84 (40)	107 (69)	-	-	-	15 (12)	355 (222)	
	Teign	-	1 (1)	0 (0)	2 (2)	6 (6)	6 (4)	21 (16)	19 (11)	9 (5)	-	-	-	8 (8)	72 (53)	
	Dart	-	1 (1)	2 (2)	1 (1)	3 (3)	6 (5)	18 (12)	10 (10)	25 (18)	2 (2)	-	-		68 (54)	
	Avon (Devon)	-	-	-	0 (0)	0 (0)	0 (0)	0 (0)	1 (1)	1 (1)	6 (3)	12 (9)	-	-		20 (14)
	Erme	-	-	-	0 (0)	0 (0)	0 (0)	2 (0)	0 (0)	1 (1)	2 (1)	0 (0)	0 (0)		5 (2)	
	Yealm	-	-	-	0 (0)	0 (0)	0 (0)	4 (3)	0 (0)	0 (0)	0 (0)	0 (0)	2 (1)		6 (4)	
	Plym	-	-	-	0 (0)	0 (0)	0 (0)	0 (0)	1 (0)	0 (0)	0 (0)	3 (3)	1 (0)		5 (3)	
	Tavy	-	-	0 (0)	0 (0)	1 (1)	0 (0)	11 (6)	11 (5)	13 (7)	18 (12)	-	-	1 (1)	55 (32)	
	Tamar	-	-	0 (0)	4 (4)	13 (13)	20 (12)	25 (15)	57 (29)	57 (43)	51 (34)	-	-	2 (1)	229 (151)	
	Lynher	-	-	1 (1)	0 (0)	1 (0)	1 (0)	9 (5)	15 (7)	29 (20)	20 (11)	-	-	1 (0)	77 (44)	
	Fowey	-	-	-	0 (0)	1 (1)	1 (0)	5 (1)	5 (2)	8 (5)	33 (17)	32 (26)	13 (10)	0 (0)	98 (62)	
	Camel	-	-	-	0 (0)	2 (2)	4 (4)	17 (3)	16 (4)	19 (10)	37 (22)	72 (36)	34 (16)	5 (3)	206 (100)	
	Torridge	-	-	1 (1)	3 (3)	8 (8)	4 (3)	5 (2)	17 (11)	14 (10)	-	-	-	1 (1)	53 (39)	
	Taw	-	-	3 (3)	6 (6)	27 (27)	27 (19)	34 (15)	47 (28)	44 (29)	-	-	-	1 (0)	189 (127)	
	Lyn	-	0 (0)	0 (0)	0 (0)	7 (7)	20 (12)	14 (7)	11 (7)	17 (10)	8 (8)	-	-	0 (0)	77 (51)	
	Others	-	0 (0)	0 (0)	0 (0)	0 (0)	0 (0)	0 (0)	1 (1)	0 (0)	0 (0)	0 (0)	0 (0)	0 (0)	1 (1)	
Total	-	11 (11)	13 (13)	28 (28)	120 (119)	159 (118)	256 (136)	315 (171)	354 (237)	188 (119)	119 (74)	50 (27)	35 (27)	1648 (1080)		
Midlands	Trent	-	0 (0)	0 (0)	0 (0)	0 (0)	0 (0)	0 (0)	0 (0)	0 (0)	1 (1)	-	-	0 (0)	1 (1)	
	Severn	-	0 (0)	14 (14)	17 (17)	29 (29)	51 (22)	36 (10)	27 (6)	27 (12)	8 (5)	-	-	3 (3)	212 (118)	
	Total	-	0 (0)	14 (14)	17 (17)	29 (29)	51 (22)	36 (10)	27 (6)	27 (12)	9 (6)	0 (0)	0 (0)	3 (3)	213 (119)	

Section 6

Table 9(continued)

Salmon Rod Catches (released totals in brackets) – 2009 Season

Environment Agency Region	River	Jan	Feb	Mar	Apr	May	Jun	Jul	Aug	Sep	Oct	Nov	Dec	Un-known	Total Number
Environment Agency Wales	Wye (a)	-	-	40 (40)	51 (51)	89 (89)	129 (88)	84 (47)	75 (55)	75 (60)	75 (70)	-	-	2 (2)	620 (502)
	Usk	-	-	3 (3)	8 (8)	20 (20)	90 (41)	94 (41)	111 (41)	88 (47)	74 (42)	-	-	3 (0)	491 (243)
	Taff	-	-	0 (0)	1 (1)	3 (3)	2 (2)	2 (2)	4 (1)	1 (0)	6 (3)	-	-	1 (0)	20 (12)
	Ogmore	-	-	0 (0)	0 (0)	1 (1)	3 (3)	19 (4)	8 (5)	17 (12)	2 (2)	-	-	1 (1)	51 (28)
	Afan	-	-	0 (0)	0 (0)	0 (0)	2 (2)	8 (5)	4 (2)	1 (1)	0 (0)	-	-	0 (0)	15 (10)
	Neath	-	-	0 (0)	0 (0)	1 (1)	3 (1)	12 (2)	9 (3)	9 (4)	21 (9)	-	-	7 (6)	62 (26)
	Tawe	-	-	0 (0)	0 (0)	1 (1)	11 (7)	25 (7)	21 (6)	27 (10)	28 (14)	-	-	1 (0)	114 (45)
	Loughor	-	-	0 (0)	0 (0)	1 (1)	0 (0)	7 (0)	11 (2)	5 (2)	3 (2)	-	-	3 (2)	30 (9)
	Tywi	-	-	9 (9)	13 (13)	35 (13)	91 (27)	112 (42)	125 (53)	42 (37)	42 (37)	-	-	14 (4)	441 (198)
	Taf	-	-	0 (0)	3 (3)	5 (2)	10 (3)	15 (2)	22 (5)	4 (2)	-	-	-	2 (1)	61 (18)
	E+W.Cleddau	-	-	0 (0)	5 (5)	4 (3)	17 (5)	21 (9)	16 (11)	15 (10)	-	-	-	0 (0)	78 (43)
	Nevern	-	-	0 (0)	0 (0)	1 (0)	8 (0)	2 (0)	2 (0)	3 (0)	-	-	-	1 (0)	17 (0)
	Teifi	-	-	4 (4)	7 (7)	26 (8)	48 (17)	60 (17)	108 (32)	62 (29)	-	-	-	10 (5)	325 (119)
	Aeron	-	-	0 (0)	0 (0)	0 (0)	1 (0)	1 (0)	0 (0)	0 (0)	-	-	-	0 (0)	2 (0)
	Ystwyth	-	-	0 (0)	0 (0)	0 (0)	1 (0)	0 (0)	2 (2)	2 (2)	-	-	-	0 (0)	5 (4)
	Rheidol	-	-	0 (0)	1 (1)	2 (2)	3 (1)	0 (0)	3 (2)	3 (1)	-	-	-	4 (0)	16 (7)
	Dyfi	-	-	0 (0)	1 (0)	5 (4)	14 (3)	17 (3)	29 (11)	18 (10)	-	-	-	0 (0)	84 (31)
	Dysynni	-	-	0 (0)	0 (0)	2 (1)	2 (0)	0 (0)	0 (0)	1 (1)	-	-	-	0 (0)	5 (2)
	Mawddach	-	-	0 (0)	2 (2)	0 (0)	5 (1)	9 (2)	14 (10)	17 (13)	4 (2)	-	-	0 (0)	51 (30)
	Arthro	-	-	0 (0)	0 (0)	0 (0)	0 (0)	0 (0)	0 (0)	2 (0)	-	-	-	0 (0)	2 (0)
	Dwyrhyd	-	-	0 (0)	0 (0)	0 (0)	0 (0)	0 (0)	3 (1)	1 (0)	1 (1)	-	-	0 (0)	5 (2)
	Glaslyn	-	-	0 (0)	1 (1)	2 (2)	0 (0)	7 (1)	4 (2)	3 (2)	5 (5)	-	-	0 (0)	22 (13)
	Dwyfawr	-	-	0 (0)	0 (0)	0 (0)	1 (0)	0 (0)	3 (0)	0 (0)	-	-	-	0 (0)	4 (0)
	Llyfni	-	-	0 (0)	0 (0)	0 (0)	0 (0)	1 (0)	0 (0)	1 (0)	-	-	-	1 (1)	3 (1)
	Gwyrfai	-	-	0 (0)	0 (0)	0 (0)	0 (0)	0 (0)	1 (0)	0 (0)	-	-	-	0 (0)	1 (0)
	Seiont	-	-	0 (0)	0 (0)	0 (0)	0 (0)	3 (0)	1 (0)	4 (2)	-	-	-	0 (0)	12 (6)
	Ogwen	-	-	0 (0)	0 (0)	0 (0)	2 (0)	16 (5)	17 (4)	14 (1)	16 (5)	-	-	4 (4)	71 (15)
	Conwy	-	-	0 (0)	0 (0)	0 (0)	2 (0)	30 (14)	37 (10)	37 (12)	28 (15)	-	-	10 (3)	144 (54)
	Clwyd	-	-	0 (0)	0 (0)	0 (0)	8 (6)	23 (9)	16 (5)	23 (17)	9 (9)	-	-	0 (0)	79 (46)
	Dee	-	-	11 (11)	6 (6)	9 (9)	18 (13)	49 (17)	99 (39)	167 (65)	147 (101)	-	-	8 (3)	514 (264)
	Others	-	-	1 (1)	1 (1)	0 (0)	0 (0)	3 (2)	2 (1)	0 (0)	3 (3)	0 (0)	0 (0)	1 (0)	11 (8)
	Total	0 (0)	0 (0)	55 (55)	83 (83)	157 156	355 197	585 214	667 260	799 362	576 377	4 4	0 0	75 28	3356 (1736)
North West	Ribble	-	1 (1)	3 (3)	4 (4)	9 (9)	10 (4)	101 (57)	167 (97)	229 (162)	468 (381)	-	-	15 (14)	1007 (732)
	Wyre	-	0 (0)	0 (0)	0 (0)	0 (0)	0 (0)	3 (3)	2 (2)	1 (0)	7 (4)	-	-	-	13 (9)
	Lune	-	0 (0)	0 (0)	3 (3)	8 (8)	7 (2)	53 (20)	106 (47)	159 (89)	470 (316)	-	-	2 (2)	808 (487)
	Kent	-	0 (0)	0 (0)	1 (1)	4 (4)	9 (2)	40 (8)	77 (26)	98 (44)	137 (90)	-	-	1 (1)	367 (176)
	Leven	-	0 (0)	0 (0)	1 (1)	0 (0)	0 (0)	1 (1)	8 (8)	5 (5)	21 (21)	-	-	-	36 (36)
	Crake	-	0 (0)	0 (0)	0 (0)	0 (0)	0 (0)	0 (0)	1 (1)	4 (4)	15 (11)	-	-	-	20 (16)
	Duddon	-	0 (0)	0 (0)	0 (0)	0 (0)	2 (2)	2 (1)	8 (1)	4 (3)	34 (17)	-	-	-	50 (24)
	Esk (Cumbrian)	-	0 (0)	0 (0)	0 (0)	0 (0)	0 (0)	1 (1)	5 (2)	2 (0)	19 (12)	-	-	-	27 (15)
	Irt	-	0 (0)	0 (0)	0 (0)	0 (0)	0 (0)	2 (0)	11 (4)	11 (5)	30 (23)	-	-	2 (0)	56 (32)
	Calder	-	0 (0)	0 (0)	0 (0)	0 (0)	0 (0)	0 (0)	3 (0)	5 (1)	18 (12)	-	-	-	26 (13)
	Ehen	-	0 (0)	0 (0)	0 (0)	0 (0)	1 (0)	10 (2)	50 (8)	67 (11)	109 (63)	-	-	-	237 (84)
	Derwent	-	3 (3)	3 (3)	0 (0)	6 (6)	3 (3)	31 (17)	130 (32)	229 (84)	387 (286)	-	-	20 (9)	812 (443)
	Ellen	-	0 (0)	4 (4)	0 (0)	0 (0)	1 (1)	2 (2)	1 (0)	1 (0)	4 (2)	-	-	-	13 (9)
	Eden	2 (2)	9 (9)	16 (16)	36 (36)	87 (87)	67 (40)	138 (52)	246 (80)	376 (188)	369 (260)	-	-	16 (8)	1362 (778)
	Esk (Border)	-	3 (3)	0 (0)	3 (3)	2 (2)	5 (0)	43 (10)	120 (50)	218 (109)	291 (199)	-	-	12 (5)	697 (381)
	Others	0 (0)	0 (0)	0 (0)	1 (1)	0 (0)	0 (0)	0 (0)	0 (0)	0 (0)	0 (0)	-	-	-	1 (1)
	Total	2 (2)	16 (16)	26 (26)	49 (49)	116 (116)	105 (54)	427 (174)	935 (358)	1409 (705)	2379 (1697)	0 (0)	0 (0)	68 (39)	5532 (3236)
All regions	Unknown						1 (0)				1 (1)				2 (1)
England and Wales		2 (2)	46 (46)	146 (145)	212 (211)	519 (517)	870 (519)	1693 (728)	2730 (1171)	3839 (1990)	5079 (3516)	123 (78)	50 (27)	254 (146)	15563 (9096)
Notes:	Reported data from rod licence catch returns only, except where indicated. Totals includes all fish taken and all fish released. Released fish pre June as recorded on return forms.														
	- A dash is used to denote months that fall entirely within the annual close season.														
	- Catches from tributaries and from minor rivers with a shared estuary are included under the appropriate main river. The catch from remaining rivers in each region is aggregated and recorded under 'others'.														
Key:	(a) Data taken from a source other than rod licence returns, ie owners' returns, general licence returns etc.														

Section 6

Table 10 Sea Trout Rod Catches (released totals in brackets) – 2009 Season

Environment Agency Region	River	Jan	Feb	Mar	Apr	May	Jun	Jul	Aug	Sep	Oct	Nov	Dec	Un-known	Total Number
North East	Aln	-	-	-	2 (0)	0 (0)	0 (0)	9 (6)	17 (12)	38 (18)	28 (12)	-	-	10 (7)	104 (55)
	Coquet	-	-	-	2 (2)	4 (3)	28 (19)	53 (36)	32 (19)	40 (18)	83 (44)	-	-	2 (1)	244 (142)
	Tyne	-	-	-	3 (2)	29 (22)	116 (77)	268 (117)	348 (152)	296 (145)	316 (199)	-	-	30 (9)	1406 (723)
	Wear	-	-	-	13 (13)	77 (68)	166 (106)	361 (228)	257 (152)	236 (157)	142 (91)	-	-	19 (15)	1271 (830)
	Tees	-	-	-	4 (4)	11 (10)	10 (10)	2 (2)	18 (13)	9 (7)	8 (7)	-	-	4 (3)	66 (56)
	Esk (Yorks.)	-	-	-	7 (7)	7 (6)	15 (4)	55 (30)	43 (31)	39 (19)	39 (18)	-	-	1 (1)	206 (116)
	Ouse (Yorks.)	-	-	-	1 (1)	1 (0)	1 (0)	0 (0)	2 (2)	0 (0)	0 (0)	-	-	1 (1)	6 (4)
	Other	-	-	-	0 (0)	0 (0)	3 (2)	0 (0)	0 (0)	3 (3)	1 (0)	-	-	8 (0)	15 (5)
Total		0 (0)	0 (0)	0 (0)	32 (29)	129 (109)	339 (218)	748 (419)	717 (381)	661 (367)	617 (371)	-	-	75 (37)	3318 (1931)
Thames	All	-	-	-	0 (0)	0 (0)	0 (0)	0 (0)	0 (0)	0 (0)	-	-	-	0 (0)	0 (0)
Anglian	All	-	-	-	0 (0)	0 (0)	0 (0)	0 (0)	0 (0)	0 (0)	-	-	-	3 (0)	3 (0)
Southern	Rother (Eastern)	-	-	-	-	0 (0)	0 (0)	9 (0)	0 (0)	0 (0)	0 (0)	-	-	0 (0)	9 (0)
	Adur	-	-	-	-	0 (0)	0 (0)	0 (0)	0 (0)	0 (0)	5 (3)	-	-	0 (0)	5 (3)
	Arun	-	-	-	-	0 (0)	4 (0)	0 (0)	0 (0)	0 (0)	0 (0)	-	-	0 (0)	4 (0)
	Ouse (Sussex)	-	-	-	-	4 (4)	8 (3)	6 (3)	7 (6)	2 (1)	2 (2)	-	-	0 (0)	29 (19)
	Test	-	-	-	-	12 (8)	24 (20)	25 (20)	39 (33)	47 (40)	6 (5)	-	-	24 (20)	177 (146)
	Itchen	-	-	-	-	0 (0)	44 (37)	58 (49)	64 (46)	66 (51)	36 (26)	-	-	7 (2)	275 (211)
	Beaulieu	-	-	-	-	0 (0)	2 (0)	12 (8)	13 (12)	8 (8)	16 (16)	-	-	0 (0)	51 (44)
	Lymington	-	-	-	-	0 (0)	0 (0)	10 (5)	2 (1)	3 (2)	22 (19)	-	-	0 (0)	37 (27)
	Others	-	-	-	-	0 (0)	1 (1)	14 (6)	4 (4)	7 (5)	4 (0)	-	-	5 (3)	35 (19)
	Total		-	-	-	-	16 (12)	83 (61)	134 (91)	129 (102)	133 (107)	91 (71)	-	-	36 (25)
South West	Avon (Hants.)	-	-	-	0 (0)	28 (21)	26 (22)	154 (150)	148 (138)	351 (339)	343 (338)	-	-	-	1050 (1008)
	Stour (Hants.)	-	-	-	0 (0)	3 (3)	0 (0)	0 (0)	5 (3)	2 (1)	3 (3)	-	-	-	13 (10)
	Piddle	-	-	-	0 (0)	0 (0)	2 (0)	8 (5)	20 (13)	3 (1)	15 (10)	-	-	-	48 (29)
	Frome	-	-	-	0 (0)	4 (1)	11 (9)	30 (25)	59 (41)	64 (42)	64 (51)	-	-	-	232 (169)
	Axe	-	-	0 (0)	10 (6)	61 (33)	93 (60)	133 (113)	91 (68)	75 (58)	40 (35)	-	-	-	503 (373)
	Otter	-	-	0 (0)	0 (0)	12 (9)	20 (17)	18 (13)	13 (12)	7 (7)	3 (3)	-	-	-	73 (61)
	Exe	-	-	0 (0)	1 (1)	1 (1)	2 (0)	12 (0)	2 (0)	5 (4)	1 (0)	-	-	-	24 (6)
	Teign	-	-	6 (4)	53 (8)	93 (29)	84 (27)	237 (129)	197 (105)	157 (96)	3 (3)	-	-	4 (1)	834 (402)
	Dart	-	-	0 (0)	59 (13)	109 (32)	62 (28)	81 (46)	75 (48)	98 (68)	1 (1)	-	-	-	485 (236)
	Avon (Devon)	-	-	-	3 (0)	2 (2)	4 (1)	3 (1)	7 (3)	10 (7)	-	-	-	7 (7)	36 (21)
	Erme	-	-	0 (0)	14 (7)	16 (5)	8 (6)	19 (15)	3 (2)	-	-	-	-	-	60 (35)
	Yealm	-	-	0 (0)	2 (2)	6 (1)	2 (0)	26 (10)	14 (13)	5 (3)	-	-	-	8 (5)	63 (34)
	Plym	-	-	2 (1)	9 (0)	20 (7)	19 (11)	50 (19)	31 (14)	10 (9)	5 (5)	-	-	6 (3)	152 (69)
	Tavy	-	-	0 (0)	12 (5)	30 (16)	69 (31)	75 (28)	61 (44)	48 (21)	1 (1)	-	-	-	296 (146)
	Tamar	-	-	0 (0)	6 (3)	29 (9)	57 (35)	244 (114)	151 (80)	57 (30)	16 (13)	-	-	48 (48)	608 (332)
	Lynher	-	-	0 (0)	13 (5)	24 (4)	34 (8)	114 (59)	57 (29)	16 (14)	4 (1)	-	-	-	262 (120)
	Looe	-	-	-	-	-	6 (6)	27 (27)	19 (19)	0 (0)	-	-	-	-	52 (52)
	Fowey	-	-	-	17 (2)	68 (26)	140 (59)	466 (284)	216 (154)	117 (102)	11 (5)	-	-	38 (33)	1073 (665)
	Camel	-	-	-	14 (9)	105 (60)	236 (135)	117 (79)	53 (51)	12 (11)	-	-	-	44 (23)	581 (368)
	Torrige	-	-	0 (0)	5 (5)	8 (4)	48 (24)	35 (23)	28 (13)	24 (11)	3 (1)	-	-	-	151 (81)
Taw	-	-	3 (2)	7 (4)	59 (35)	129 (56)	120 (62)	90 (60)	50 (31)	8 (5)	-	-	16 (11)	482 (266)	
Lyn	-	-	-	-	2 (2)	18 (17)	15 (12)	3 (1)	1 (0)	-	-	-	-	39 (32)	
Others	0 (0)	0 (0)	0 (0)	0 (0)	0 (0)	24 (24)	11 (10)	32 (32)	1 (1)	9 (4)	-	-	0 (0)	77 (71)	
Total		0 (0)	0 (0)	11 (7)	197 (54)	585 (249)	949 (479)	2085 (1254)	1475 (1004)	1178 (918)	543 (490)	0 (0)	0 (0)	171 (131)	7194 (4585)
Midlands	Severn	-	0 (0)	1 (1)	33 (33)	7 (6)	0 (0)	3 (2)	4 (3)	7 (4)	0 (0)	-	-	0 (0)	55 (49)
	Trent	-	0 (0)	0 (0)	0 (0)	0 (0)	0 (0)	0 (0)	0 (0)	0 (0)	1 (1)	-	-	0 (0)	1 (1)
	Unknown	-	0 (0)	0 (0)	0 (0)	0 (0)	0 (0)	1 (1)	0 (0)	0 (0)	0 (0)	-	-	0 (0)	1 (1)
	Total	-	0 (0)	1 (1)	33 (33)	7 (6)	0 (0)	4 (3)	4 (3)	7 (4)	1 (1)	-	-	0 (0)	57 (51)

(Continued)

Section 6

Table 10 (continued)

Sea Trout Rod Catches (released totals in brackets) – 2009 Season

Environment Agency Region	River	Jan	Feb	Mar	Apr	May	Jun	Jul	Aug	Sep	Oct	Nov	Dec	Un-known	Total Number	
Environment Agency Wales	Wye	-	-	1 (1)	1 (1)	4 (2)	9 (6)	8 (3)	5 (5)	9 (6)	2 (2)	-	-	0 (0)	39 (26)	
	Usk	-	-	0 (0)	2 (2)	10 (10)	37 (33)	15 (13)	15 (8)	19 (14)	1 (1)	-	-	1 (0)	100 (81)	
	Ebbw	-	-	0 (0)	0 (0)	0 (0)	0 (0)	0 (0)	5 (5)	0 (0)	1 (0)	-	-	0 (0)	6 (5)	
	Rhymney	-	-	0 (0)	1 (0)	2 (0)	3 (0)	6 (0)	8 (2)	5 (2)	1 (0)	-	-	0 (0)	26 (4)	
	Taff	-	-	1 (1)	5 (3)	5 (4)	24 (23)	6 (2)	24 (20)	2 (1)	2 (2)	-	-	0 (0)	69 (56)	
	Ogmore	-	-	0 (0)	10 (5)	16 (4)	58 (36)	109 (66)	162 (136)	97 (76)	7 (7)	-	-	9 (8)	468 (338)	
	Afan	-	-	0 (0)	0 (0)	1 (1)	16 (11)	38 (23)	44 (25)	18 (11)	3 (3)	-	-	0 (0)	120 (74)	
	Neath	-	-	2 (2)	5 (3)	15 (8)	47 (30)	114 (78)	148 (123)	99 (85)	52 (43)	-	-	10 (4)	492 (376)	
	Tawe	-	-	0 (0)	7 (1)	22 (17)	48 (23)	56 (30)	78 (46)	22 (10)	8 (4)	-	-	1 (1)	242 (132)	
	Loughor	-	-	0 (0)	4 (0)	22 (6)	66 (29)	81 (37)	54 (31)	21 (8)	1 (1)	-	-	9 (3)	258 (115)	
	Gwendraeth	-	-	0 (0)	0 (0)	1 (0)	4 (0)	1 (0)	3 (0)	1 (0)	0 (0)	-	-	0 (0)	10 (0)	
	Tywi	-	-	-	44 (14)	269 (121)	667 (263)	861 (343)	565 (274)	220 (155)	95 (74)	-	-	-	124 (40)	2845 (1284)
	Taf	-	-	-	6 (3)	8 (2)	77 (37)	143 (57)	84 (27)	45 (9)	3 (2)	-	-	-	11 (3)	377 (140)
	E+W.Cleddau	-	-	-	12 (10)	20 (6)	184 (119)	144 (68)	79 (42)	46 (30)	14 (14)	-	-	-	0 (0)	499 (289)
	Nevern	-	-	-	1 (0)	39 (1)	81 (13)	181 (29)	120 (32)	41 (10)	8 (0)	-	-	-	17 (8)	488 (93)
	Teifi	-	-	-	49 (40)	143 (53)	430 (216)	578 (265)	346 (192)	293 (236)	139 (122)	-	-	-	98 (28)	2076 (1152)
	Aeron	-	-	-	-	12 (2)	28 (7)	28 (3)	11 (5)	16 (0)	1 (0)	-	-	-	0 (0)	96 (17)
	Ystwyth	-	-	-	-	1 (0)	6 (1)	49 (28)	69 (51)	39 (35)	2 (1)	-	-	-	0 (0)	166 (116)
	Rheidol	-	-	-	-	15 (0)	48 (26)	65 (37)	65 (40)	31 (16)	3 (3)	-	-	-	11 (3)	238 (125)
	Dyfi	-	-	0 (0)	36 (31)	72 (55)	169 (76)	488 (254)	372 (284)	199 (156)	48 (43)	-	-	-	41 (19)	1425 (918)
	Dysynni	-	-	6 (6)	25 (21)	38 (26)	59 (50)	91 (71)	76 (62)	92 (87)	13 (7)	-	-	-	20 (10)	420 (340)
	Mawddach	-	-	0 (0)	0 (0)	6 (2)	41 (29)	130 (87)	152 (128)	63 (53)	17 (15)	-	-	-	2 (0)	411 (314)
	Arthro	-	-	0 (0)	0 (0)	0 (0)	0 (0)	0 (0)	3 (1)	5 (0)	4 (0)	-	-	-	0 (0)	12 (1)
	Dwryrd	-	-	0 (0)	0 (0)	0 (0)	0 (0)	0 (0)	1 (0)	33 (19)	24 (10)	2 (2)	-	-	0 (0)	60 (31)
	Glaslyn	-	-	62 (47)	109 (59)	52 (32)	32 (16)	39 (14)	112 (75)	73 (47)	21 (16)	-	-	-	33 (5)	533 (311)
	Dwyfawr	-	-	0 (0)	0 (0)	0 (0)	14 (7)	46 (22)	72 (41)	40 (30)	15 (11)	-	-	-	0 (0)	187 (111)
	Llyfni	-	-	0 (0)	0 (0)	0 (0)	4 (0)	43 (19)	28 (8)	10 (1)	0 (0)	-	-	-	0 (0)	85 (28)
	Gwyrfai	-	-	0 (0)	0 (0)	0 (0)	0 (0)	3 (3)	4 (2)	0 (0)	0 (0)	-	-	-	0 (0)	7 (5)
	Seiont	-	-	0 (0)	4 (3)	2 (1)	5 (5)	37 (27)	11 (5)	10 (3)	0 (0)	0 (0)	0 (0)	-	0 (0)	69 (44)
	Ogwen	-	-	0 (0)	0 (0)	8 (0)	8 (2)	46 (22)	38 (23)	30 (24)	19 (11)	-	-	-	14 (6)	163 (88)
	Conwy	-	-	0 (0)	0 (0)	0 (0)	31 (23)	115 (89)	112 (95)	88 (51)	26 (19)	-	-	-	51 (33)	423 (310)
	Clwyd	-	-	7 (7)	35 (35)	81 (79)	144 (126)	304 (252)	206 (156)	87 (68)	15 (8)	-	-	-	1 (1)	880 (732)
	Dee	-	-	0 (0)	0 (0)	7 (4)	26 (13)	43 (15)	43 (24)	40 (26)	22 (17)	-	-	-	0 (0)	181 (99)
Others	-	-	0 (0)	0 (0)	0 (0)	7 (7)	22 (16)	28 (17)	14 (5)	6 (1)	5 (4)	0 (0)	0 (0)	3 (3)	85 (53)	
Total		0 (0)	0 (0)	79 (64)	356 (231)	871 (436)	2373 (1227)	3894 (1974)	3177 (2003)	1798 (1265)	547 (429)	5 (4)	0 (0)	456 (175)	13556 (7808)	
North West	Ribble	-	-	-	12 (12)	22 (19)	169 (132)	380 (254)	392 (318)	245 (198)	55 (48)	-	-	6 (4)	1281 (985)	
	Wyre	-	-	-	0 (0)	1 (1)	0 (0)	7 (6)	4 (4)	18 (17)	8 (8)	-	-	6 (6)	44 (42)	
	Lune	-	-	-	6 (2)	87 (64)	230 (122)	311 (204)	293 (224)	223 (178)	102 (73)	-	-	10 (6)	1262 (873)	
	Kent	-	-	-	16 (13)	9 (6)	90 (70)	136 (99)	129 (91)	56 (41)	23 (21)	-	-	10 (10)	469 (351)	
	Leven	-	-	-	0 (0)	4 (2)	3 (1)	14 (7)	14 (10)	13 (10)	3 (3)	-	-	0 (0)	51 (33)	
	Crake	-	-	-	0 (0)	0 (0)	0 (0)	12 (7)	17 (17)	2 (2)	8 (6)	-	-	0 (0)	39 (32)	
	Duddon	-	-	-	0 (0)	0 (0)	6 (6)	27 (17)	76 (56)	60 (43)	10 (10)	-	-	0 (0)	179 (132)	
	Esk (Cumbrian)	-	-	-	0 (0)	3 (3)	7 (3)	6 (3)	20 (12)	2 (2)	1 (1)	-	-	0 (0)	39 (24)	
	Irt	-	-	-	0 (0)	0 (0)	0 (0)	42 (21)	37 (19)	24 (15)	10 (7)	-	-	0 (0)	113 (62)	
	Calder	-	-	-	0 (0)	0 (0)	13 (13)	0 (0)	3 (2)	0 (0)	0 (0)	-	-	0 (0)	16 (15)	
	Ehen	-	-	-	0 (0)	0 (0)	20 (10)	50 (39)	50 (44)	46 (42)	13 (13)	-	-	0 (0)	179 (148)	
	Derwent	-	-	-	6 (4)	20 (15)	42 (39)	49 (45)	35 (24)	30 (25)	23 (16)	-	-	32 (32)	237 (200)	
	Ellen	-	-	-	0 (0)	0 (0)	1 (1)	27 (21)	26 (19)	16 (8)	4 (4)	-	-	0 (0)	74 (53)	
	Eden	-	-	-	10 (7)	35 (19)	86 (33)	87 (59)	44 (27)	54 (48)	30 (28)	-	-	1 (1)	347 (222)	
	Esk (Border)	-	-	-	18 (18)	57 (29)	239 (115)	394 (220)	270 (166)	171 (83)	115 (81)	-	-	7 (6)	1271 (718)	
	Others	-	-	-	0 (0)	0 (0)	0 (0)	0 (0)	1 (0)	3 (1)	0 (0)	-	-	3 (3)	7 (4)	
Total		0 (0)	0 (0)	0 (0)	68 (56)	238 (158)	906 (545)	1543 (1002)	1413 (1034)	960 (712)	405 (319)	-	-	75 (68)	5608 (3894)	
All regions	Unknown								1 (1)						1 (1)	
England and Wales		0 (0)	0 (0)	11 (7)	239 (90)	765 (389)	1457 (791)	3054 (1823)	2366 (1515)	2026 (1440)	1281 (960)	0 (0)	0 (0)	286 (194)	30359 (18739)	
Notes:	Reported data from rod licence catch returns only. Totals includes all fish taken and all fish released. A dash is used to denote months that fall entirely within the annual close season.								Catches from tributaries and from minor rivers with a shared estuary are included under the appropriate main river. The catch from remaining rivers in each region is aggregated and recorded under 'others'.							

Section 6

Table 11 Rod Caught Salmon & Sea Trout, Average Weight (Kg)- 2009 season

Environment Agency Region	Salmon			Sea trout			
	River	Total catch	Total est. wt. (kg)	Ave. wt. (kg)	Total catch	Total est. wt. (kg)	Ave. wt. (kg)
North East	Coquet	462	1448	3.1	244	353	1.1
	Tyne	3073	13883	4.5	1406	2641	1.9
	Wear	716	2625	3.7	1271	2000	1.6
	Tees	69	314	4.6	66	81	1.2
	Esk (Yorks.)	52	181	3.5	206	287	1.4
Southern	Test	64	282	4.4	177	212	1.2
	Itchen	166	619	3.7	273	319	1.3
South West	Avon (Hants.)	76	406	5.3	1050	518	0.5
	Frome	35	158	4.5	232	172	0.7
	Axe	19	58	3.1	503	590	1.2
	Exe	355	1209	3.4	24	16	0.7
	Teign	72	250	3.5	833	627	0.8
	Dart	68	220	3.2	486	559	1.2
	Avon (Devon)	20	55	2.8	36	32	1.1
	Tavy	55	190	3.4	296	256	0.9
	Tamar	229	765	3.2	608	387	0.7
	Lynher	77	260	3.3	262	184	0.8
	Fowey	98	306	3.0	1073	636	0.8
	Camel	206	712	4.4	581	343	0.8
	Torridge	53	173	3.3	151	163	1.1
	Taw	189	746	4.2	482	505	1.0
Lyn	77	227	3.0	39	19	0.5	
Midlands	Severn	212	1010	4.8	55	40	0.7
Environment Agency Wales	Wye	499	2415	4.8	39	32	0.8
	Usk	491	2107	4.3	100	104	1.0
	Taff	20	66	3.3	69	59	1.1
	Ogmore	51	129	2.5	468	397	0.8
	Tawe	114	417	3.4	242	265	1.1
	Tywi	441	1638	3.7	2845	3707	1.2
	Taf	61	223	3.7	377	355	0.9
	E+W.Cleddau	78	276	3.5	499	328	0.6
	Nevern	17	45	2.6	488	306	0.6
	Teifi	325	1161	3.6	2076	1492	0.7
	Aeron	2	3	1.5	96	68	0.7
	Rheidol	16	49	3.0	238	203	0.9
	Dyfi	84	321	3.8	1425	1497	1.1
	Mawddach	51	173	3.4	411	321	0.8
	Glaslyn	22	101	4.6	533	315	0.6
	Ogwen	71	210	3.0	163	151	1.0
	Conwy	144	453	3.1	423	271	0.6
Clwyd	79	267	3.4	880	531	0.6	
Dee	514	2214	4.2	181	165	0.9	
North West	Ribble	1007	4144	4.1	1281	1056	0.8
	Lune	808	3129	3.9	1262	1153	0.9
	Kent	367	1292	3.5	469	428	0.9
	Esk (Cumbrian)	27	107	4.0	39	24	0.6
	Ehen	237	757	3.2	179	131	0.7
	Derwent	812	3099	3.4	237	247	1.0
	Ellen	13	54	4.2	74	60	0.8
	Eden	1362	5735	4.2	347	314	0.9
	Esk (Border)	697	2673	3.2	1271	1223	0.9
Notes:	<p>Only those fish with associated weights are included All data taken from rod licence returns including rivers Test, Itchen and Wye Total Weights calculated to nearest whole kg Catches from tributaries and from minor rivers with a shared estuary are included under the appropriate main river.</p>						

Section 6

Table 12 Number of rod caught salmon in weight categories (lb & kg)- 2009

Environment Agency Region	River	0-8 lb (0-3.6 kg)	8-14 lb (3.6-6.4 kg)	14-22 lb (6.4-10 kg)	>22 lb (>10 kg)
North East	Coquet	333	120	9	0
	Tyne	1174	1476	407	16
	Wear	431	245	40	0
	Tees	28	28	11	2
	Esk (Yorks.)	32	18	2	0
	Others	23	19	6	1
Southern	Test	26	31	7	0
	Itchen	98	62	6	0
	Others	0	0	1	0
South West	Avon (Hants.)	17	39	18	2
	Frome	17	15	3	0
	Axe	13	6	0	0
	Exe	237	114	4	0
	Teign	40	31	1	0
	Dart	44	24	0	0
	Avon (Devon)	17	3	0	0
	Tavy	32	23	0	0
	Tamar	156	69	4	0
	Lynher	51	25	1	0
	Fowey	76	20	2	0
	Camel	136	64	6	0
	Torridge	41	12	0	0
	Taw	100	76	9	3
	Lyn	59	18	0	0
Others	12	5	2	0	
Midlands	Severn	56	129	26	1
	Others	0	0	1	0
Environment Agency Wales	Wye	146	283	65	5
	Usk	186	267	38	0
	Taff	16	2	2	0
	Ogmore	41	9	1	0
	Tawe	61	52	1	0
	Tywi	236	190	15	0
	Taf	31	29	1	0
	E+W.Cleddau	43	33	2	0
	Nevern	16	1	0	0
	Teifi	197	116	12	0
	Aeron	2	0	0	0
	Rheidol	13	3	0	0
	Dyfi	46	34	3	1
	Mawddach	31	20	0	0
	Glaslyn	8	12	1	1
	Ogwen	57	12	2	0
	Conwy	104	38	2	0
	Clwyd	50	27	2	0
Dee	211	252	50	1	
Others	91	61	3	0	
North West	Ribble	511	386	106	4
	Lune	461	280	64	3
	Kent	234	120	12	1
	Esk (Cumbrian)	17	7	3	0
	Ehen	176	56	5	0
	Derwent	488	271	50	3
	Ellen	7	3	3	0
	Eden	656	567	131	8
	Esk (Border)	407	234	55	1
	Others	148	49	8	0
Notes:	<p>Only those fish with associated weights are included</p> <p>All data taken from rod licence returns</p> <p>Catches from tributaries and from minor rivers with a shared estuary are included under the appropriate main river.</p>				

Section 6

Table 13 Number of rod caught sea trout in weight categories (lb & kg)- 2009

Environment Agency Region	River	0-1 lb (0-0.45 kg)	1-4 lb (0.45-1.8 kg)	>4 lb (>1.8 kg)
North East	Coquet	73	113	58
	Tyne	244	634	528
	Wear	388	474	409
	Tees	29	25	12
	Esk (Yorks.)	41	118	47
	Others	37	59	29
Southern	Ouse (Sussex)	5	10	14
	Test	42	112	23
	Itchen	101	117	55
	Beaulieu	21	25	5
	Lymington	17	16	4
	Others	21	15	17
South West	Avon (Hants.)	891	146	13
	Frome	117	100	15
	Axe	163	261	79
	Exe	14	10	0
	Teign	400	404	29
	Dart	98	321	67
	Avon (Devon)	18	16	2
	Tavy	112	169	15
	Tamar	396	197	15
	Lynher	168	85	9
	Fowey	796	240	37
	Camel	422	142	17
	Torridge	58	71	22
	Taw	171	252	59
	Lyn	31	8	0
	Others	283	216	39
Midlands	Severn	41	9	5
	Others	1	1	0
Environment Agency Wales	Wye	22	14	3
	Usk	59	29	12
	Taff	34	31	4
	Ogmore	272	146	50
	Tawe	120	82	40
	Tywi	927	1241	677
	Taf	157	176	44
	E+W.Cleddau	306	180	13
	Nevern	274	206	8
	Teifi	1251	707	118
	Aeron	27	67	2
	Rheidol	146	67	25
	Dyfi	718	531	176
	Mawddach	233	153	25
	Glaslyn	389	130	14
	Ogwen	86	58	19
	Conwy	282	127	14
Clwyd	622	228	30	
Dee	89	76	16	
Others	1275	532	196	
North West	Ribble	707	494	80
	Lune	589	571	102
	Kent	240	185	44
	Esk (Cumbrian)	23	16	0
	Ehen	119	50	10
	Derwent	107	102	28
	Ellen	37	32	5
	Eden	180	144	23
	Esk (Border)	479	683	109
	Others	272	153	24
Notes:	Only those fish with associated weights are included All data taken from rod licence returns. Catches from tributaries and from minor rivers with a shared estuary are included under the appropriate main river.			

Section 6

Table 14 Summary of salmon net catches, 1999- 2009

Environment Agency Region	River/ Fishery	Fishing Method	1999	2000	2001	2002	2003	2004	2005	2006	2007	2008	2009	
North East Northumbria	Coastal (N)	Drift nets	14903	27093	21805	18490	5134	5323	5243	3887	4423	3111	2294	
		T nets	1801	2789	3264	2811	4480	4461	3129	3250	1839	2154	2605	
	Coastal (S)	Drift nets	8270	9679	8240	7174	0	0	0	0	0	0	0	0
		T nets	39	74	80	0	47	32	16	23	106	84	34	0
	North East Yorkshire	Coastal	Drift nets	1639	3287	2329	2021	377	598	364	153	471	538	296
T or J nets			181	432	397	484	397	603	235	253	252	354	166	
Whole area		Total	26833	43354	36115	30980	10435	11017	8987	7566	7091	6241	5395	
Anglian	Coastal	Drift nets	6	0	0	112	20	53	12	10	4	9	3	
		Other nets (var.)	0	0	0	0	4	0	3	5	3	0	0	
	Whole area	Total	6	0	0	112	24	53	15	15	7	9	3	
Southern	Hants area	Seine nets	0	0	0	0	0	0	0	0	0	0	0	
	Itchen	Seine nets	0	0	0	0	0	0	0	0	0	0	0	
	Whole area	Total	0	0	0	0	0	0	0	0	0	0	0	
South West	Avon + Stour	Seine nets	87	153	131	204	66	108	56	57	55	268	58	
		Seine net	0	0	8	19	18	5	6	8	2	8	4	
	Poole Harbour	Dip nets	0	0	0	0	0	0	0	0	0	0	0	
		Putcher ranks	6	0	0	0	0	0	0	0	0	0	0	
	Parrett	River total	6	0	0	0	0	0	0	0	0	0	0	
		Seine nets	350	474	200	514	277	414	287	189	102	137	92	
	Exe	Seine nets	68	101	95	221	265	250	84	111	18	103	66	
		Seine nets	126	168	169	113	197	296	63	47	15	54	42	
	Dart	Fixed Engine	0	0	0	0	0	0	0	0	0	0	0	
		Drift nets	49	210	158	70	83	14	7	0	0	0	6	
	Avon	Seine nets	8	11	20	5	13	0	0	0	0	0	0	
		Seine nets	251	287	176	137	219	0	0	0	0	0	0	
	Camel	Seine net												
		Seine nets	50	2	11	11	29	0	0	0	0	0	0	
	Tavy	Seine nets	2	13	7	7	1	3	4	0	0	0	0	
		Seine nets	608	752	819	103	276	205	65	65	19	17	17	
	Tamar	Fixed Engine	0	0	0	0	0	0	0	0	0	0	0	
		Total	1605	2171	1794	1404	1444	1295	572	477	211	587	285	
	Midlands	Severn	Seine nets	35	41	5	20	38	43	25	13	0	0	2
			Lave nets	190	228	186	116	295	380	135	138	68	100	115
Fixed Engines (a)			764	704	836	1054	1207	346	778	713	608	771	766	
Total (a)			989	973	1027	1190	1540	769	938	864	676	871	883	
Whole area														
Environment Agency Wales	Wye	Lave nets	3	11	2	6	6	8	7	6	6	4	6	
		Drift nets	726	0	0	0	0	0	0	0	0	0	0	
		Putcher rank	260	0	0	0	0	0	0	0	0	0	0	
		River total	986	0	0	0	0	0	0	0	0	0	0	
	Tywi	Seine nets	15	25	16	45	32	71	26	20	16	16	8	
		Coracle nets	6	29	46	63	41	35	20	25	16	29	40	
		River total	22	54	62	108	73	106	46	45	32	45	48	
		Wade net	0	1	0	0	0	0	0	0	0	0	0	
	Taf	Coracle net	8	4	0	0	0	1	1	0	0	0	0	
		River total	8	5	0	0	0	1	1	0	0	0	0	
		Wade nets	0	0	0	0	0	0	0	0	0	0	0	
		River total	0	0	0	0	0	0	0	0	0	0	0	
	S.W.Coastal	Compass nets	41	90	60	28	27	25	9	11	8	3	1	
		Seine net	0	0	0	0	0	0	0	0	0	0	0	
		Seine nets	3	79	0	17	4	1	103	85	1	41	13	
		River total	100	85	60	82	88	51	85	45	15	24	17	
	Dyfi	Seine nets	103	164	60	99	92	52	188	130	16	65	31	
		Seine nets	20	19	21	75	1	0	8	0	2	0	0	
		Seine net	10	0	24	2	15	5	5	0	0	0	0	
		Seine nets	0	0	1	1	0	0	1	2	0	0	0	
	Mawddach	Seine nets	11	3	0	6	0	0	0	0	0	0	0	
		Seine nets	0	0	0	0	0	0	0	0	0	0	0	
		Seine nets	0	0	0	0	0	0	0	0	0	0	0	
		Seine nets	0	0	0	0	0	0	0	0	0	0	0	
	Glaslyn	Seine nets	0	0	0	0	0	0	0	0	0	0	0	
		Seine nets	0	0	0	0	0	0	0	0	0	0	0	
		Seine nets	0	0	0	0	0	0	0	0	0	0	0	
		Seine nets	0	0	0	0	0	0	0	0	0	0	0	
	N. Caernarfon	Seine nets	0	0	0	0	0	0	0	0	0	0	0	
		Seine nets	0	0	0	0	0	0	0	0	0	0	0	
		Seine nets	0	0	0	0	0	0	0	0	0	0	0	
		Seine nets	0	0	0	0	0	0	0	0	0	0	0	
	Seiont/Gwyrfai	Seine nets	109	85	0	0	0	0	0	0	0	0	0	
		Seine nets	0	10	4	0	0	0	0	0	0	0	0	
		Seine nets	14	20	13	0	37	28	46	18	11	0	8	
		River total	14	30	17	0	0	28	46	18	11	0	8	
	Clwyd	Sling nets	0	0	0	0	0	0	0	0	0	0	0	
		Trammel nets	525	356	500	529	365	331	303	291	471	0	0	
		Seine nets	495	187	250	421	359	414	507	176	67	43	0	
		River total	1020	543	750	950	724	745	810	467	538	43	0	
Dee	Total	2347	1004	997	1275	975	970	1121	679	613	160	93		
	Seine nets	210	176	130	228	155	295	250	119	266	64	165		
	Haaf nets	529	455	336	271	369	185	662	418	256	86	117		
	Drift nets	252	1072	743	1204	400	473	1350	686	486	238	129		
North West	Lune	Seine net	22	0	42	56	41	31	59	40	18	17	0	
		River total	803	1527	1121	1531	810	689	2071	1144	760	341	411	
	Kent	Lave nets	55	79	159	32	40	8	90	63	4	0	25	
		Lave nets	20	37	7	5	3	5	15	19	4	1	3	
Duddon	Seine net	-	-	-	-	-	-	-	-	-	-	-		
	Drift nets + var. nets	45	157	232	325	98	0	0	0	0	0	0		
	Haaf nets + var. nets	1254	1520	1661	1197	1695	1480	2752	2632	1290	575	407		
	Whole area	2387	3496	3310	3318	2801	2477	5178	3977	2324	981	846		
England and Wales			34146	50998	43243	38279	17219	16581	16811	13578	10922	8849	7505	

(a) 1993 Midlands fixed engine, Midlands total and total England/Wales net catch amended from earlier reports

N = North

(b) Catches included under Tavy and Tamar as appropriate

S = South

Section 6
Table 15

Summary of sea trout net catches, 1999- 2009

Environment Agency Region	River/ Fishery	Fishing Method	1999	2000	2001	2002	2003	2004	2005	2006	2007	2008	2009	
North East Northumbria	Coastal (N)	Drift nets	7881	10400	9279	7489	2433	2041	1880	2731	2545	2578	2828	
		T nets	9380	10894	10666	8287	10396	8462	7373	9899	6026	9800	11579	
	Coastal (S)	Drift nets	4534	6370	5565	5350	0	0	0	0	0	0	0	0
		T nets	1381	823	774	0	123	33	49	92	127	241	159	0
	North East Yorkshire	Coastal	Drift nets	2644	2651	2907	2403	278	339	294	258	545	996	662
		T or J nets	6638	8249	6741	6921	8541	8867	9177	9512	8323	11250	11729	
	Whole area	Total	32458	39387	35932	30450	21771	19742	18773	22492	17566	24865	26957	
Anglian	Coastal	Drift nets	1266	1497	2195	917	2021	1772	862	708	651	509	550	
		Other nets (var.)	163	186	212	372	455	281	252	205	201	205	138	
	Whole area	Total	1429	1683	2407	1289	2476	2053	1114	913	852	714	688	
Southern	Hants area	Seine nets	16	1	24	24	14	7	2	0	2	0	0	
		Seine nets	0	0	0	0	0	0	0	0	0	0	0	
	Whole area	Total	16	1	24	24	14	7	2	0	2	0	0	
South West	Avon + Stour	Seine nets	525	781	450	1169	449	646	177	242	337	268	257	
	Poole Harbour	Seine net	0	0	7	5	17	7	15	13	8	8	8	
	Parrett	Dip nets	0	0	0	0	0	0	0	0	0	0	0	
		Putcher ranks	0	0	0	0	0	0	0	0	0	0	0	
		River total	0	0	0	0	0	0	0	0	0	0	0	
	Exe	Seine nets	31	5	5	16	8	5	6	9	10	20	4	
	Teign	Seine nets	253	81	146	244	321	315	207	218	117	191	182	
	Dart	Seine nets	510	289	605	727	564	451	538	75	67	107	160	
	Avon	Fixed Engine	0	0	0	0	0	0	0	0	0	0	0	
	Camel	Drift nets	3	16	40	6	21	1	0	0	0	0	0	
	Tavy	Seine nets	31	21	14	20	32	0	0	0	0	0	0	
	Tamar	Seine nets	92	45	66	55	44	0	0	0	0	0	0	
	Tavy/Tamar (a)	Seine net						0	0	0	0	0	0	
	Lynher	Seine nets	8	0	5	4	1	0	0	0	0	0	0	
	Fowey	Seine nets	18	6	14	3	1	0	0	0	0	0	0	
	Taw/Torrige	Seine nets	763	450	676	212	340	151	128	65	43	100	77	
	Lyn	Fixed Engine	0	0	0	0	0	0	0	0	0	0	0	
	Whole area	Total	2234	1694	2028	2461	1798	1577	1071	622	582	694	688	
	Midlands	Severn	Seine nets	0	0	0	0	0	0	0	0	0	0	0
			Lave nets	0	0	0	0	0	0	0	0	0	0	0
Fixed Engines			0	0	0	0	0	0	0	0	0	0	7	
Whole area		Total	0	0	0	0	0	0	0	0	0	0	7	
Environment Agency Wales	Wye	Lave nets	0	0	0	0	0	0	0	0	0	0	0	
		Drift nets	13	0	0	0	0	0	0	0	0	0	0	
		Putcher rank	7	0	0	0	0	0	0	0	0	0	0	
		River total	20	0	0	0	0	0	0	0	0	0	0	
	Tywi	Seine nets	683	543	613	604	504	567	589	247	400	306	383	
		Coracle nets	400	619	738	555	766	205	324	197	351	367	637	
		River total	1083	1162	1351	1159	1270	772	913	444	751	673	1020	
	Taf	Wade net	1	0	0	0	2	0	2	0	0	1	0	
		Coracle net	135	64	6	39	12	17	17	28	0	0	0	
		River total	136	64	6	39	14	17	19	28	0	1	0	
	S.W.Coastal	Wade nets	0	0	0	0	0	0	0	0	0	0	0	
		Seine nets	0	0	0	0	0	0	0	0	0	0	0	
		River total	0	0	0	0	0	0	0	0	0	0	0	
	E+W.Cleddau	Compass nets	33	27	36	10	11	4	10	2	0	5	1	
		Seine net	84	20	0	0	0	0	0	0	0	0	13	
		Seine nets	3	115	170	7	15	13	79	13	38	80	94	
	NeVERN	Coracle nets	306	325	502	378	500	396	263	112	90	194	299	
		River total	309	440	672	385	515	409	342	125	128	274	407	
		Seine nets	140	148	151	210	51	16	90	67	33	29	31	
	Dysynni	Seine net	90	22	88	14	45	42	11	4	0	21	20	
	Mawddach	Seine nets	0	0	1	0	0	0	0	1	0	4	0	
	Glaslyn	Seine nets	20	9	0	20	0	0	0	0	0	0	0	
	Dwyfawr	Seine nets	0	0	0	0	0	0	0	0	0	0	0	
	N. Caernarfon	Seine nets	0	0	0	0	0	0	0	0	0	0	0	
	Seiont/Gwyrfa	Seine nets	0	0	0	0	0	0	0	0	0	0	0	
	Ogwen	Seine nets	30	17	0	0	0	0	0	0	0	0	0	
	Conwy	Basket trap	0	0	0	0	0	0	0	0	0	0	0	
		Seine nets	4	6	3	0	8	10	11	3	6	0	2	
		River total	4	6	3	0	8	10	11	3	6	0	2	
	Clwyd	Sling nets	0	0	0	0	0	0	0	0	0	0	0	
		Trammel nets	10	1	5	95	15	15	13	21	16	0	0	
		Seine nets	19	26	21	11	35	52	33	0	2	15	0	
Dee	River total	29	27	26	106	50	67	46	21	18	15	0		
Whole area	Total	1978	1942	2334	1943	1964	1337	1442	695	936	1022	1480		
North West	Ribblesdale	Drift nets	18	21	37	18	11	32	8	10	5	1	13	
		Haaf nets	609	233	312	238	325	491	274	244	125	248	252	
		Drift nets	208	93	122	35	47	79	86	48	20	25	44	
		Seine net	7	0	54	60	22	35	18	4	6	27	0	
		River total	824	326	488	333	405	637	386	306	156	300	296	
	Kent	Lave nets	5	0	24	0	3	0	7	5	4	0	5	
		Lave nets	11	15	3	1	1	1	0	0	0	1	2	
	Duddon	Seine net	*	*	*	*	*	*	*	*	*	0	*	
	S&W Cumbria area	Drift nets + var. nets	0	21	31	9	16	0	0	0	0	0	0	
	Eden + Esk area	Haaf nets + var. nets	1095	932	1618	490	800	701	634	278	253	377	619	
	Whole area	Total	1953	1315	2201	851	1225	1339	1027	589	413	679	935	
	England and Wales			40068	46022	44926	37018	29248	26055	23429	25311	20351	27974	30755

(a) Catches recorded under Tavy and Tamar as appropriate

N = North
S = South

Section 6

Table 16 Summary of salmon rod catch, 1999- 2009

Environment Agency Region	River	1999	2000	2001	2002	2003	2004	2005	2006	2007	2008	2009
North East	Aln	0	5	1	4	55	15	19	9	26	6	28
	Coquet	376	616	649	689	566	1177	1108	780	641	842	462
	Tyne	1898	2297	2513	2585	2163	4122	3591	3795	3091	3389	3073
	Wear	266	533	436	535	586	1055	971	823	788	959	716
	Tees	109	105	81	93	86	208	107	135	159	267	69
	Ouse (Yorks.)	2	0	0	2	8	6	16	22	18	10	20
	Esk (Yorks.)	19	44	33	57	43	189	111	197	145	159	52
	Others	0	0	20	2	0	16	10	13	4	2	1
	Total	2670	3600	3733	3967	3507	6788	5933	5774	4872	5634	4421
Thames	Thames	1	0	0	0	0	0	0	0	0	0	0
Southern	Test	159	147	215	342	167	459	351	210	256	419	185
	Itchen	92	168	190	189	58	150	87	121	210	289	205
	Others	2	1	0	0	0	0	0	0	0	3	1
	Total	253	316	405	531	225	609	438	331	466	711	391
South West	Avon (Hants.)	40	14	43	104	109	78	132	134	116	67	76
	Piddle	8	1	1	13	5	8	3	1	1	0	2
	Frome	119	82	95	115	57	60	58	57	69	46	35
	Exe	477	649	187	210	146	594	269	187	340	540	355
	Teign	74	97	43	52	47	194	71	63	87	214	72
	Dart	80	100	50	34	37	156	66	49	75	124	68
	Avon (Devon)	17	33	11	53	35	76	31	59	54	61	20
	Plym	11	19	13	19	7	3	6	26	14	23	5
	Tavy	62	66	55	16	14	69	85	76	68	81	55
	Tamar	241	250	114	143	114	316	131	197	169	358	229
	Lynher	39	67	38	30	28	79	74	56	90	67	77
	Fowey	94	163	117	218	113	164	242	254	114	190	98
	Camel	167	234	226	266	307	389	334	355	369	358	206
	Torridge	39	71	13	28	19	89	46	44	56	119	53
	Taw	290	403	126	153	112	317	103	151	345	287	189
	Lyn	109	216	246	206	97	168	56	67	88	117	77
	Others	14	22	18	77	19	39	18	26	16	34	31
Total	1881	2487	1396	1737	1266	2799	1725	1802	2071	2686	1648	
Midlands	Severn	184	327	273	195	333	319	430	356	280	294	212
	Others	0	0	0	0	0	0	0	0	0	0	1
	Total	184	327	273	195	333	319	430	356	280	294	213
Environment Agency, Wales	Wye	567	592	733	357	460	788	683	519	675	1099	620
	Usk	539	872	857	616	305	1115	772	748	1158	1157	491
	Taff	44	66	18	4	0	11	15	21	14	21	20
	Ogmore	82	81	62	51	27	107	33	39	54	76	51
	Afan	8	7	8	7	5	10	6	5	3	9	15
	Neath	45	64	70	90	35	73	37	85	53	99	62
	Tawe	70	47	113	148	61	155	164	184	183	195	114
	Loughor	11	16	13	13	8	38	29	10	39	51	30
	Tywi	356	420	227	390	432	795	507	642	737	720	441
	Taf	69	83	99	41	32	178	103	105	64	92	61
	E+W.Cleddau	34	58	46	34	36	51	40	32	72	102	78
	Nevern	18	27	30	19	34	45	27	65	46	38	17
	Teifi	554	584	616	507	333	1062	472	552	518	571	325
	Aeron	6	6	7	12	0	18	0	2	1	3	2
	Ystwyth	11	18	11	8	1	9	3	5	10	3	5
	Rheidol	27	25	30	15	12	50	38	27	31	62	16
	Dyfi	106	134	145	49	46	160	114	207	159	197	84
	Dysynni	2	7	2	5	1	5	2	2	2	3	5
	Mawddach	146	127	130	121	101	206	126	118	111	94	51
	Artro	3	1	4	4	0	3	4	7	0	5	2
	Dwryyd	10	6	17	33	16	42	17	22	10	21	5
	Glaslyn	11	9	11	19	4	30	9	17	29	43	22
	Dwyfawr	12	18	11	8	7	31	11	14	9	18	4
	Llyfni	9	12	11	22	14	9	2	0	4	1	3
	Gwyrfa	0	1	0	0	0	4	1	0	1	1	1
	Seiont	18	39	39	9	12	99	57	50	35	32	12
	Ogwen	54	101	122	68	43	114	125	52	101	121	71
Conwy (a)	89	199	220	110	147	264	162	157	192	190	144	
Clwyd	71	60	74	49	35	77	18	31	135	176	79	
Dee	390	359	616	493	421	1080	812	621	683	885	514	
Others	7	10	9	10	4	23	19	16	7	37	11	
Total	3369	4049	4351	3312	2632	6652	4408	4355	5136	6122	3356	
North West	Ribble	633	827	349	692	556	1442	1094	1054	1062	1372	1007
	Wyre	5	5	11	15	3	26	4	5	8	25	13
	Lune	1032	1440	566	1127	823	1893	1481	1163	1152	1374	808
	Kent	234	576	260	352	233	582	567	493	411	539	367
	Leven	6	17	6	7	12	61	65	51	30	38	36
	Duddon	15	12	24	17	8	63	56	69	65	125	50
	Esk (Cumbrian)	77	114	50	80	20	74	107	104	227	90	27
	Irt	42	105	30	76	42	133	131	148	119	119	56
	Calder	12	67	14	61	22	51	31	47	16	53	26
	Ehen	78	443	164	395	115	344	275	274	330	365	237
	Derwent	656	1328	1063	888	466	1770	1386	887	1458	1286	812
	Ellen	8	22	10	16	3	29	8	2	6	30	13
	Eden	885	1093	1122	963	808	2622	2223	1634	1407	1571	1362
	Esk (Border)	431	729	521	812	431	897	978	808	841	1065	697
	Others	19	36	19	31	5	35	40	32	19	13	21
	Total	4133	6814	4209	5532	3547	10022	8446	6771	7151	8065	5532
	England and Wales		12505	17596	14383	15282	11519	27336	21418	19509	19984	23512

Figures include all fish caught, not just retained fish
(a) 2004 figure amended from earlier reports

Section 6

Table 17

Summary of sea trout rod catch, 1999- 2009

Environment Agency Region	River	1999	2000	2001	2002	2003	2004	2005	2006	2007	2008	2009	
North East	Aln	92	60	69	108	182	65	74	87	139	83	104	
	Coquet	538	636	418	457	148	557	330	325	254	531	244	
	Tyne	2062	1498	2131	2371	1585	2095	1724	1636	1660	2036	1406	
	Wear	1255	1331	1165	2374	1448	2143	1497	1298	1356	2080	1271	
	Tees	91	88	39	62	61	143	108	51	50	68	66	
	Esk (Yorks.)	507	564	276	519	479	489	376	552	672	493	206	
	Others	28	51	72	82	30	43	29	101	41	32	21	
	Total	4573	4228	4170	5973	3933	5535	4138	4050	4172	5323	3318	
Anglian	Unknown	0	0	0	0	0	0	0	0	0	0	3	
Thames	Thames	0	0	0	1	1	2	0	1	8	0	0	
Southern	Test	113	147	280	260	357	216	114	115	89	74	177	
	Itchen	269	481	1067	866	676	411	147	324	213	242	275	
	Ouse (Sussex)	133	78	146	161	101	76	27	41	51	44	29	
	Others	139	116	215	228	209	187	157	109	99	135	141	
	Total	654	822	1708	1515	1343	890	445	589	452	495	622	
South West	Avon (Hants.)	557	645	2354	766	1412	456	927	237	152	187	1050	
	Stour (Hants.)	2	20	30	13	77	14	28	30	9	6	13	
	Piddle	14	0	5	34	57	27	36	24	68	37	48	
	Frome	211	111	206	207	241	211	153	101	118	50	232	
	Axe	515	261	535	420	287	204	254	288	295	233	503	
	Otter	76	117	74	165	118	53	63	53	49	87	73	
	Exe	73	29	16	45	59	41	32	19	32	42	24	
	Teign	1118	589	591	798	599	616	581	440	530	589	833	
	Dart	867	651	782	712	718	574	599	453	334	242	486	
	Avon (Devon)	417	237	229	395	661	435	168	417	93	290	36	
	Erme	74	37	53	50	48	26	68	53	64	14	60	
	Yealm	105	118	67	82	152	71	52	66	28	37	63	
	Plym	205	131	156	112	77	60	103	82	74	75	152	
	Tavy	365	327	462	260	282	271	426	158	122	285	296	
	Tamar	772	423	289	524	515	537	315	215	252	298	608	
	Lynher	326	281	166	138	277	142	207	150	139	191	262	
	Looe	107	99	188	97	146	123	162	88	68	14	52	
	Fowey	1274	951	1180	1037	1056	844	1184	772	752	519	1073	
	Camel	1099	544	877	1031	1498	1112	1022	563	441	333	581	
	Torridge	448	239	426	335	321	249	181	82	106	219	151	
	Taw	952	506	175	822	596	389	562	208	451	570	482	
	Lyn	57	60	56	60	56	43	21	26	29	30	39	
	Others	34	96	102	150	91	72	147	65	53	5	77	
		Total	9668	6472	9019	8253	9344	6570	7291	4590	4259	4353	7194
Midlands	Severn	1	12	8	19	12	14	105	14	32	25	55	
	Others	0	0	0	0	0	0	0	0	0	0	0	
	Total	1	12	8	19	12	14	105	14	32	25	57	
Environment Agency, Wales	Wye	16	19	45	27	24	36	84	42	39	48	39	
	Usk	611	520	125	290	320	238	244	184	129	191	100	
	Taff	229	105	174	90	71	62	55	12	45	115	69	
	Rhymney	7	10	14	55	28	17	9	11	23	28	26	
	Ogmore	646	677	547	878	572	584	784	193	386	418	468	
	Afan	195	188	166	103	162	168	153	63	158	161	120	
	Neath	340	535	673	782	400	532	393	298	487	317	492	
	Tawe	404	136	373	424	272	173	372	153	243	144	242	
	Loughor	509	322	258	550	577	369	538	184	277	361	258	
	Gwendraeth	111	58	99	154	101	59	56	61	71	62	10	
	Tywi	6242	4134	2056	4554	4175	2587	4698	2091	3271	2570	2845	
	Taf	540	273	224	562	475	204	528	205	280	447	377	
	E+W.Cleddau	1297	755	651	869	738	439	937	227	511	681	499	
	Nevern	893	584	1078	846	1125	606	722	539	415	674	488	
	Teifi	3809	3235	3694	4841	3997	3126	4342	1990	1774	1746	2076	
	Aeron	568	280	364	777	422	396	205	35	306	151	96	
	Ystwyth	259	211	223	256	83	276	107	19	376	132	166	
	Rheidol	927	473	693	703	961	551	741	744	587	231	238	
	Dyfi	2070	2032	2185	1793	1474	1362	1439	1054	1459	1215	1425	
	Dysynni	464	435	406	343	688	471	502	284	410	315	420	
	Mawddach	1448	1020	1974	1529	1196	1127	1024	387	594	325	411	
	Arthro	24	40	94	63	44	30	29	23	17	24	12	
	Dwyrhyd	181	124	367	381	147	70	50	57	48	78	60	
	Glaslyn	436	383	240	1096	534	567	592	489	682	520	533	
	Dwyfawr	765	1027	1261	1111	1246	347	691	235	455	145	187	
	Llyfni	182	384	542	290	518	187	221	108	257	63	85	
	Gwyrffai	1	2	3	22	0	4	4	0	9	0	7	
	Seiont	54	26	89	85	82	112	29	19	21	28	69	
	Ogwen	88	104	112	193	148	130	177	86	170	65	163	
	Conwy (a)	351	391	583	630	572	464	489	282	585	434	423	
	Clwyd	765	708	1319	868	982	1085	782	490	728	949	880	
	Dee	159	177	283	414	249	265	303	253	276	192	181	
	Others	25	71	76	110	120	192	177	67	201	140	91	
	Total	24616	19439	20991	25689	22503	16836	21477	10885	15290	12970	13556	
North West	Ribble	1423	1511	499	1553	1296	1294	1313	683	1174	826	1281	
	Wyre	37	33	32	62	26	66	5	24	30	16	44	
	Lune	2091	2833	1426	2549	2268	1760	1380	962	1120	1068	1262	
	Kent	284	527	214	403	426	431	570	294	456	335	469	
	Leven	76	104	54	116	70	69	30	32	132	34	51	
	Duddon	29	60	128	38	54	143	181	132	159	183	179	
	Esk (Cumbrian)	236	203	93	189	88	112	140	93	199	29	39	
	Irt	184	195	20	209	95	110	125	29	142	84	113	
	Calder	6	13	2	16	10	9	10	2	4	7	16	
	Ehen	184	854	49	1131	1113	466	688	516	193	353	179	
	Derwent	1049	978	405	321	250	384	294	214	212	159	237	
	Ellen	26	78	56	132	41	129	69	42	155	35	74	
	Eden	345	703	330	370	881	427	705	238	241	186	347	
	Esk (Border)	1239	2174	1122	1107	1260	749	1138	581	933	1221	1271	
	Others	56	79	33	49	15	27	43	21	32	5	46	
		Total	7265	10345	4463	8245	7893	6176	6691	3863	5182	4541	5608
		Unknown region	9	4	15	101	72	77	172	277	3	0	1
England and Wales		46786	41322	40374	49796	45101	36100	40319	24269	29398	27707	30359	

Figures include all fish caught, not just retained fish
(a) 2004 figure amended from earlier reports

Section 6

Table 18

Reported Net Effort data for Salmon & Sea Trout- 2009

Environment Agency Region	River/ Fishery	Fishing Method	No. Lics.	Days available (a)	Allowable effort (b) net days (NE)/tides (other)	Utilised effort		% utilised	Average day (NE)/tide (other) per licence	Catch Salmon	Salmon catch per lic.day (NE)/ tide (other)	Catch Sea trout	Sea trout catch per lic. day (NE)/ tide (other)
						net days (NE)	net tides (other)						
North East Northumbria	Coastal (N)	Drift	9 (c)	66	594	446		75	50	2,294	5.14	2828	6.34
		T nets	26 (c)	113	2938	644		22	25	2605	4.05	10435	16.20
	Coastal (S)	Drift nets	0	66	0	0		0	0	0	0.00	159	0.00
		T nets	1	113	113	18		16	18	34	1.89	662	36.78
North East Yorkshire	Coastal	Drift nets	2	66	132	98		74	49	296	3.02	10053	102.58
		T or J nets	30	113	3390	877		26	29	148	0.17	24137	27.52
Anglian	Coastal	Drift nets	23	130	2990		236	8	10	3	0.01	550	2.33
		Other nets (var.)	6	130	780		53	7	9	0	0.00	138	2.60
South West	Avon + Stour	Seine nets	3	45	135		154	114	51	58	0.38	257	1.67
	Poole Harbour	Seine net	1	45	45		29	64	29	4	0.14	8	0.28
	Exe	Seine nets	11	55	605		92	15	8	92	1.00	4	0.04
	Teign	Seine nets	3	121	363		97	27	32	66	0.68	182	1.88
	Dart	Seine nets	3	100	300		172	57	57	42	0.24	160	0.93
	Camel	Drift nets	6	66	396		8	2	1	6	0.75	0	0.00
	Tavy	Seine nets	2	66	132		97	-	-	0	-	0	-
	Tamar	Seine nets	3	66	198		-	-	-	0	-	0	-
	Tavy/Tamar	Seine net	-	-	-		-	-	-	0	-	0	-
	Lynher	Seine nets	1	66	66		-	-	-	0	-	0	-
	Fowey	Seine nets	1	131	131		0	0	0	0	0.00	0	0.00
	Taw/Torrige	Seine nets	3	45	135		82	61	27	17	0.21	77	0.94
	Midlands	Severn	Seine nets	3	66	198		29	15	10	2	0.00	0
Lave nets			25 (e)	66	1650		385	23	15	115	0.30	0	0.00
Fixed Engines			4 (f)	76	304		458	151	115	766	1.67	7	0.02
Environment Agency Wales	Wye	Lave nets	6	66	396		150	4	25	6	0.04	0	0.00
	Tywi	Seine nets	3	110	330		205	62	68	8	0.04	383	1.87
		Coracle nets	7	110	770		324	42	46	40	0.12	637	1.97
		Wade net	1	45	45		0	0	0	0	0.00	0	0.00
	Taf	Coracle net	1	110	110		0	0	0	0	0.00	0	0.00
		Compass nets	6	66	396		82	21	14	1	0.01	1	0.01
	E+W.Cleddau	Seine nets	2	109	218		69	32	35	0	0.00	94	1.36
	Teifi	Coracle nets	9	109	981		347	35	39	13	0.04	299	0.86
		Seine nets	2	109	218		63	29	32	17	0.27	31	0.49
	Dyfi	Seine net	1	66	66		8	12	8	0	0.00	20	0.00
	Mawddach	Seine nets	2	66	132		74	56	37	0	0.00	0	0.00
	Glaslyn	Seine nets	0	66	0		0	0	0	0	0.00	0	0.00
	Conwy	Basket trap	0	92	0		0	0	0	0	0.00	2	0.00
	Nevern	Seine nets	3	66	198		20	10	7	8	0.40	0	0.00
		Seine nets	1	66	66		9	14	9	0	0.00	13	0.00
North West (e)	Ribble	Drift nets	5	66	330		144	44	29	165	1.15	13	0.09
	Lune	Haaf nets	12	66	792		590	74	49	117	0.20	252	0.43
		Drift nets	7	66	462		136	29	19	129	0.95	44	0.32
		Seine net	0	66	0		0	-	-	0	0.00	27	0.00
	Kent	Lave nets	7	66	462		54	12	8	25	0.46	5	0.09
		Lave nets	2	44	88		45	51	23	3	0.07	2	0.04
	S&W Cumbria	Drift nets	-	-	-		-	-	-	-	-	0	-
	Eden + Esk	Haaf nets	66	73	4818		1636	34	25	367	0.22	617	0.38
	Eden	Coop nets	3	66	198		426	215	142	40	0.09	2	0.00

Key:

(a) Days available is the total of the open season minus weekly closure periods. Part days included as full days - voluntary closure or buy-outs not taken into account
(b) Allowable effort is number of licences X available days for NE fisheries. Allowable effort for other fisheries is number of licences X available days X 1.4 tides.
(c) Separate licences for drift and T nets were issued for the first time in the northern area in 1993.
(d) Catches included under Tavy and Tamar as appropriate.
(e) Figures for half- and full-season lave nets combined.
(f) Assume all effort utilised
nr = not recorded

Section 6

Table 19 Reported Rod Effort Data for Salmon & Sea Trout – 2009

Environment Agency Region	River	Number of returns with effort data	Number of days fished	Number of days fished per return	(a) Number of salmon and grilse recorded	Catch per licence day	(a) Number of sea trout recorded	Catch per licence day	Days to catch a salmonid
North East	Aln	47	557	11.85	17	0.031	91	0.163	5.16
	Coquet	421	5789	13.75	379	0.065	218	0.038	9.70
	Tyne	2179	19245	8.83	2406	0.125	1125	0.058	5.45
	Wear	623	8599	13.80	633	0.074	1140	0.133	4.85
	Tees	190	1753	9.23	56	0.032	53	0.030	16.08
	Esk (Yorks.)	125	1109	8.87	40	0.036	187	0.169	4.89
	Ouse (Yorks.)	46	200	4.35	19	0.095	4	0.020	8.70
Thames	Thames	5	46	0.00	0	0.000	0	0.000	-
Southern	Test	115	493	4.29	40	0.081	129	0.262	2.92
	Itchen	136	698	5.13	123	0.176	247	0.354	1.89
	Beaulieu	15	66	4.40	0	0.000	51	0.773	1.29
	Ouse (Sussex)	5	432	86.40	0	0.000	22	0.051	19.64
	Adur	7	50	7.14	0	0.000	3	0.060	16.67
	Lymington	10	109	10.90	0	0.000	29	0.266	3.76
	Great Ouse	5	28	5.60	0	0.000	4	0.143	7.00
South West	Avon (Hants.)	193	1411	7.31	59	0.042	985	0.698	1.35
	Stour (Hants.)	10	50	5.00	0	0.000	13	0.260	3.85
	Piddle	13	115	8.85	1	0.009	25	0.217	4.42
	Frome	64	446	6.97	18	0.040	177	0.397	2.29
	Axe	115	801	6.97	13	0.016	336	0.419	2.30
	Otter	24	256	10.67	0	0.000	38	0.148	6.74
	Exe	261	2409	9.23	285	0.118	24	0.010	7.80
	Teign	143	1695	11.85	70	0.041	690	0.407	2.23
	Dart	125	1309	10.47	49	0.037	364	0.278	3.17
	Avon (Devon)	114	641	5.62	19	0.030	36	0.056	11.65
	Erme	10	105	10.50	2	0.019	55	0.524	1.84
	Yealm	12	81	6.75	4	0.049	25	0.309	2.79
	Plym	33	373	11.30	81	0.217	25	0.067	3.52
	Tavy	75	943	12.57	41	0.043	258	0.274	3.15
	Tamar	351	1759	5.01	175	0.099	442	0.251	2.85
	Lynher	71	770	10.85	70	0.091	252	0.327	2.39
	Looe	5	54	10.80	0	0.000	52	0.963	1.04
	Fowey	246	2881	11.71	74	0.026	1003	0.348	2.68
	Camel	274	2769	10.11	134	0.048	466	0.168	4.62
	Taw	337	2449	7.27	170	0.069	388	0.158	4.39
Torridge	147	946	6.44	33	0.035	123	0.130	6.06	
Lyn	90	370	4.11	38	0.103	23	0.062	6.07	
Midlands	Severn	374	4789	12.80	174	0.036	212	0.044	12.41
Environment Agency Wales	Wye	795	5964	7.50	409	0.069	35	0.006	13.43
	Usk	605	6304	10.42	403	0.064	92	0.015	12.74
	Taff	35	439	12.54	15	0.034	53	0.121	6.46
	Rhymney	7	70	10.00	3	0.043	25	0.357	2.50
	Ogmore	137	1707	12.46	8	0.005	356	0.209	4.69
	Afan	42	620	14.76	5	0.008	110	0.177	5.39
	Neath	86	1731	20.13	41	0.024	372	0.215	4.19
	Tawe	128	2195	17.15	80	0.036	227	0.103	7.15
	Loughor	108	1552	14.37	22	0.014	207	0.133	6.78
	Gwendraeth	11	192	17.45	0	0.000	10	0.052	19.20
	Tywi	1120	13306	11.88	305	0.023	2317	0.174	5.07
	Taf	169	1859	11.00	47	0.025	317	0.171	5.11
	E&W Cleddau	144	2369	16.45	72	0.030	454	0.192	4.50
	Nevern	86	910	10.58	10	0.011	348	0.382	2.54
	Teifi	757	8081	10.68	213	0.026	1639	0.203	4.36
	Aeron	33	544	16.48	1	0.002	84	0.154	6.40
	Ystwyth	31	414	13.35	5	0.012	135	0.326	2.96
	Rheidol	55	832	15.13	8	0.010	205	0.246	3.91
	Dyfi	212	1876	8.85	56	0.030	1163	0.620	1.54
	Dysynni	70	680	9.71	5	0.007	296	0.435	2.26
	Mawddach	184	1468	7.98	39	0.027	360	0.245	3.68
	Arto	9	83	9.22	2	0.024	12	0.145	5.93
	Dwryyd	14	142	10.14	3	0.021	51	0.359	2.63
	Glaslyn	61	839	13.75	21	0.025	460	0.548	1.74
	Dwyfawr	51	601	11.78	2	0.003	130	0.216	4.55
	Llyfni	22	292	13.27	2	0.007	47	0.161	5.96
	Gwyrffai	9	45	5.00	1	0.022	5	0.111	-
	Seiont	46	409	8.89	11	0.027	65	0.159	5.38
	Ogwen	63	916	14.54	61	0.067	125	0.136	4.92
	Conwy	200	2149	10.75	119	0.055	398	0.185	4.16
Clwyd	228	2100	9.21	72	0.034	781	0.372	2.46	
Dee	284	7979	28.10	411	0.052	161	0.020	13.95	
North West	Ribble	1044	10082	9.66	848	0.084	1169	0.116	5.00
	Wyre	34	245	7.21	12	0.049	35	0.143	5.21
	Lune	803	7557	9.41	704	0.093	1109	0.147	4.17
	Kent	277	2940	10.61	227	0.077	373	0.127	4.90
	Leven	41	387	9.44	36	0.093	50	0.129	4.50
	Duddon	62	576	9.29	37	0.064	157	0.273	2.97
	Esk (Cumbrian)	46	244	5.30	16	0.066	33	0.135	4.98
	Irt	95	715	7.53	54	0.076	112	0.157	4.31
	Calder	26	177	6.81	24	0.136	16	0.090	4.43
	Ehen	154	2338	15.18	158	0.068	148	0.063	7.64
	Derwent	606	5604	9.25	674	0.120	228	0.041	6.21
	Ellen	33	375	11.36	12	0.032	72	0.192	4.46
	Eden	978	11018	11.27	992	0.090	276	0.025	8.69
	Esk (Border)	652	5072	7.78	571	0.113	1130	0.223	2.98

Notes: Effort data is reported for both salmon and sea trout and can not be separated. (a)The table includes only returns upon which the number of days fished were reported. Some returns contained data for two or more rivers.

Section 6
Table 20

Estimated Proportions of Grilse & Multi- Sea Winter (MSW) Salmon in Declared Rod Catch- 2009

Environment Agency Region	River	No. grilse	% grilse	No. MSW	% MSW
North East	Coquet	407	88	55	12
	Tyne	1989	66	1046	34
	Wear	599	85	105	15
	Whole Region	3117	71	1247	29
Southern	Test	30	48	34	53
	Itchen	113	69	51	31
	Whole Region	143	62	86	38
South West	Frome	18	53	17	47
	Exe	255	72	100	28
	Teign	50	70	22	30
	Dart	50	74	18	26
	Tavy	47	86	8	14
	Tamar	179	79	49	21
	Fowey	91	93	7	7
	Camel	178	89	22	11
	Taw	99	54	84	46
	Torridge	39	74	14	26
	Lyn	61	79	16	21
	Whole Region	1203	74	431	26
Midlands	Severn	67	32	142	68
Environment Agency Wales	Wye	182	37	315	63
	Usk	277	57	212	43
	Ogmore	43	86	7	14
	Tawe	87	77	26	23
	Tywi	308	72	119	28
	Taf	46	78	13	22
	E&W Cleddau	61	78	17	22
	Teifi	246	78	68	22
	Dyfi	65	77	19	23
	Mawddach	40	78	11	22
	Ogwen	57	88	8	12
	Conwy	120	88	17	12
	Dee	344	68	164	32
	Whole Region	2112	67	1057	33
North West	Ribble	768	77	228	23
	Lune	659	82	148	18
	Kent	306	84	60	16
	Leven	32	89	4	11
	Irt	52	93	4	7
	Ehen	219	92	18	8
	Derwent	663	83	132	17
	Eden	860	64	487	36
	Esk (Border)	574	83	116	17
	Whole Region	4260	78	1223	22
England & Wales		10904	72	4192	28

Notes: The grilse/MSW split is attributed only to fish with a declared capture date and weight
The splitting model uses monthly age-weight data collected from the fish trap on the River Dee, Wales
Whole Region totals includes minor river data not otherwise included in the table

Section 6
Table 21

Salmon Stocking – number of eggs, fry, parr and smolts released - 2009

Environment			Unfed	Fed	0+	1+	1+	2+
Agency Region	River	Tributary	Ova	Fry	Fry	Parr	Parr	Smolts
North East	MainTyne	Main river (plus var. tribs.)	0	0	0	28,307	0	0
	South Tyne	Main River (plus var. tribs.)	0	0	0	96,972	39,750	0
	North Tyne	Main River (tribs + Kielder Burn)	0	0	0	227,847	27,000	0
	Rede	Main River (plus var. tribs.)	0	0	0	99,559	27,616	0
	Esk (Yorks.)		0	0	95,000	0	0	0
	Total		0	0	95,000	452,685	94,366	0
Thames	Thames	Main River	0	0	0	0	0	5,914
		Kennet	0	0	0	0	4,632	7,950
	Total		0	0	0	0	4632	13864
Southern	Itchen (Egg box)		0	9,913	0	0	0	0
	Total		0	9,913	0	0	0	0
South West	Lynher		0	13,000	12,000	0	0	0
	Tamar		0		31,000	0	0	0
	Torridge		0	55,741	0	0	0	0
	Fowey (plus tribs.)		0	10,000	16,350	0	0	0
	Camel (plus tribs.)		0	21,500	23,000	0	0	0
	Total		0	100,241	82,350	0	0	0
Midlands	Severn	Tribs. Inc Teme and Leaddon	0	0	0	142,140	1,100	0
	Trent	Dove	0	0	0	130,000	0	0
		Dove (River Churnet)	0	0	0	30,000	0	0
	Total		0	0	0	302,140	1,100	0
Environment Agency Wales	Taff		0	0	80,000	0	0	900
	Ely		0	0	5,000	0	6,000	4,156
	Ebbw		0	0	0	0	0	0
	Teifi		0	0	0	0	0	0
	Afan		0	0	0	0	0	0
	Wye	Tributaries	0	0	0	0	0	0
	Tywi	Main river + Cothi and Gwili	0	0	0	51,500	0	6,250
	Eastern Cleddau		0	0	0	0	0	13,470
	Rheidol		0	0	0	0	0	0
	Conwy	Main river, Lledr + Llugwy	0	0	18,880	15,500	4,200	3,200
	Mawddach	Main river, Eden and Wnion	0	0	23,000	6,100	3,400	7,800
	Dee	Main river (plus var. tribs.)	0	0	13,000	16,600	22,500	28,500
	Total		0	0	139,880	89,700	36,100	64,276
North West	Ribble	Hodder	0	0	0	0	25,000	0
	Leven		0	0	0	0	0	0
	Lune	Main River (plus var. tribs.)	0	0	55,000	0	11,000	0
	Total		0	0	55,000	0	36,000	0
England and Wales			0	110,154	372,230	844,525	172,198	78,140
Notes:	<p>1+ Parr are those stocked out on or after 1st January in the year after they hatched.</p> <p>1+ Smolts are those stocked out on or after 1st January in the 1st year after they hatched.</p> <p>2+ Smolts are those stocked out on or after 1st January in the 2nd year after they hatched.</p>							

Section 6
Table 22

Sea Trout Stocking – number of eggs, fry, parr and smolts released - 2009

Environment			Unfed	Fed	0+	1+	1+	2+
Agency Region	River	Tributary	Ova	Fry	Fry	Parr	Parr	Smolts
South West	Axe		0	7,000	0	0	0	0
	Total		0	7,000	0	0	0	0
Environment Agency	Taff		0	0	80,000	0	900	0
	Ebbw		0	0	5,000	6,000	4,156	0
	Tywi	Main river + Cothi and Gwili	0	0	0	10,900	0	0
	Mawddach	Main river, Eden and Wnion	0	9,600	12,000	0	8,000	0
	Total		0	9,600	97,000	16,900	13,056	0
North West	Ribble	Hodder	0	0	0	4000	0	0
	Lune	Main River (plus var. tribs.)	0	0	0	500	0	0
	Total		0	0	0	4,500	0	0
Notes:			1+ Parr are those stocked out on or after 1st January in the year after they hatched.					
			1+ Smolts are those stocked out on or after 1st January in the 1st year after they hatched.					
			2+ Smolts are those stocked out on or after 1st January in the 2nd year after they hatched.					

7. REFERENCES

ANON, 2009. *Annual Assessment of Salmon Stocks and Fisheries in England and Wales, 2009* (preliminary assessment for ICES, April 2008) Cefas/EA:97 pp. ISBN: 9780907545254.

RUSSELL, I.C., IVES, M.J., POTTER, E.C.E., BUCKLEY, A.A. and DUCKETT, L., 1995. *Salmon and migratory trout statistics for England and Wales, 1951-1990*. Fisheries Research Data Report (38):252 pp.

ENVIRONMENT AGENCY, 2008. *Salmonid and Freshwater Fisheries Statistics for England and Wales 2008*.

8. GLOSSARY

Cefas	Formerly CEFAS - The Centre for Environment, Fisheries & Aquaculture Science
EIFAC	European Inland Fisheries Advisory Commission
Grilse	Salmon that has spent not more than one winter at sea before maturing, also known as 1 sea winter (1SW) fish
ICES	International Council for the Exploration of the Seas
Migratory trout	Sea trout, referred to as sewin in Wales. Migratory form of trout <u>Salmo trutta</u> (L.)
MSW	Multi-Sea-Winter; a salmon that has spent two or more winters at sea before maturing
NASCO	North Atlantic Salmon Conservation Organisation
Nets	Instruments other than rod and line (including nets and fixed engines such as cribbs, putts, putchers, baulks, fishing weirs and traps as used for the capture of migratory salmonids)
NLO	Net Limitation Order

The Environment Agency is the leading public body protecting and improving the environment in England and Wales.

It's our job to make sure that air, land and water are looked after by everyone in today's society, so that tomorrow's generations inherit a cleaner, healthier world.

Our work includes tackling flooding and pollution incidents, reducing industry's impacts on the environment, cleaning up rivers, coastal waters and contaminated land, and improving wildlife habitats.

This report is the result of research commissioned and funded by the Environment Agency.

Published by:

Environment Agency, Rio House, Waterside Drive,
Aztec West, Almondsbury, Bristol, BS32 4UD
Tel: 01454 624400 Fax: 01454 624409
www.environment-agency.gov.uk

© Environment Agency – Nov, 2010

All rights reserved. This document may be reproduced with prior permission of the Environment Agency.

The views and statements expressed in this report are those of the author alone. The views or statements expressed in this publication do not necessarily represent the views of the Environment Agency and the Environment Agency cannot accept any responsibility for such views or statements.

This report is printed on Cyclus Print, a 100% recycled stock, which is 100% post consumer waste and is totally chlorine free. Water used is treated and in most cases returned to source in better condition than removed.

Further copies of this report are available from our publications catalogue: <http://publications.environment-agency.gov.uk> or our National Customer Contact Centre: T: 08708 506506
E: enquiries@environment-agency.gov.uk.

Author(s):

Amanna Rahman

Dissemination Status:

Publicly available

Keywords:

Fisheries statistics, Salmon, Sea trout, eel

Product Code:

GEHO1110BTFR-E-E