

DEUTSCHES ELEKTRONEN-SYNCHROTRON DESY

DESY 79/53
August 1979



EVIDENCE FOR PLANAR EVENTS IN e^+e^- ANNIHILATION AT HIGH ENERGIES

by

TASSO Collaboration

NOTKESTRASSE 85 · 2 HAMBURG 52

To be sure that your preprints are promptly included in the
HIGH ENERGY PHYSICS INDEX,
send them to the following address (if possible by air mail) :

DESY
Bibliothek
Notkestrasse 85
2 Hamburg 52
Germany

Evidence for Planar Events in e^+e^- Annihilation at High Energies

TASSO Collaboration

R.Brandelik, W.Braunschweig, K.Gather, V.Kadansky, K.Lübelismeyer, P.Mättig,
H.-U.Martyn, G.Peise, J.Rimkus, H.G.Sander, D.Schmitz, A.Schultz von Dratzig,
D.Trines, W.Waltraff,

I. Physikalisches Institut der RWTH Aachen, Germany[†]

H.Boerner, H.M.Fischer, H.Hartmann, E.Hilger, M.Hillen, G.Knop, W.Korbach,
P.Leu, B.Löhr, F.Roth*, W.Rühmer, R.Wedemeyer, N.Wermes, M.Wollstadt,
Physikalisches Institut der Universität Bonn, Germany[†]

R.Bühning, R.Fohrmann, D.Heyland, H.Hultschig, P.Joos, W.Koch, U.Kötz,

H.Kowalski, A.Ladage, D.Lüke, H.L.Lynch, G.Mikenberg**, D.Notz, J.Pyrlík,

R.Riethmüller, M.Schliwa, P.Söding, B.H.Wiik, G.Wolf,

Deutsches Elektronen-Synchrotron DESY, Hamburg, Germany

M.Holder, G.Poelz, J.Ringel, O.Römer, R.Rüsch, P.Schmüser,

II. Institut für Experimentalphysik der Universität Hamburg, Germany[†]

D.M.Binnie, P.J.Dornan, N.A.Downie, D.A.Garbutt, W.G.Jones, S.L.Lloyd,

D.Pandoulas, A.Pevsner***, J.Sedgebeer, S.Yarker, C.Youngman,

Department of Physics, Imperial College London, England^{††}

R.J.Barlow, R.J.Cashmore, J.Illingworth, M.Ogg, G.L.Salmon,

Department of Nuclear Physics, Oxford University, England^{††}

K.W.Bell, W.Chinowsky****, B.Foster, J.C.Hart, J.Proudfoot, D.R.Quarrie,

D.H.Saxon, P.L.Woodworth,

Rutherford Laboratory, Chilton, England^{††}

Y.Eisenberg, U.Karshon, E.Kogan, D.Revel, E.Ronat, A.Shapira,

Weizmann Institute, Rehovot, Israel^{†††}

J.Freeman, P.Lecomte, T.Meyer, Sau Lan Wu, G.Zobernig

Department of Physics, University of Wisconsin, Madison, Wisconsin, USA^{††††}

Abstract:

Hadron jets produced in e^+e^- annihilation between 13 GeV and 31.6 GeV in c.m. at PETRA are analyzed. The transverse momentum of the jets is found to increase strongly with c.m. energy. The broadening of the jets is not uniform in azimuthal angle around the quark direction but tends to yield planar events with large and growing transverse momenta in the plane and smaller transverse momenta normal to the plane. The simple $q\bar{q}$ collinear jet picture is ruled out. The observation of planar events shows that there are three basic particles in the final state. Indeed, several events with three well separated jets of hadrons are observed at the highest energies. This occurs naturally when the outgoing quark radiates a hard noncollinear gluon i.e. $e^+e^- \rightarrow q\bar{q}g$ with the quarks and the gluons fragmenting into hadrons with limited transverse momenta.

* Now at University Kiel, Germany

** On leave from Weizmann Institute, Rehovot, Israel

*** On leave from Johns Hopkins University, Baltimore, Md., USA

**** On leave from University of California, Berkeley, USA

+ Supported by the Deutsches Bundesministerium für Forschung und Technologie

++ Supported by the UK Science Research Council

+++ Supported by the Minerva Gesellschaft für die Forschung mbH, München

++++ Supported in part by the US Department of Energy contract EY-76-C-02-0881.

It has been conjectured that hadron production in e^+e^- annihilation proceeds by quark pair production with the quarks fragmenting into two nearly collinear jets of hadrons¹⁻⁴. The transverse momentum of the hadrons is limited at high energies such that narrow jets are predicted in the PETRA energy range. Data from SPEAR and DORIS support this picture^{5,6}. In this paper we examine our data on e^+e^- annihilation at high energies for deviations from the simple quark parton picture⁷. Such deviations have been observed⁸ in deep inelastic lepton scattering experiments and are expected⁹ to occur in any field theory of strong interactions. Furthermore, final states observed¹⁰ in the hadronic decay of the τ (9.46) disagree with a naive $q\bar{q}$ picture.

This analysis is based on data collected at the DESY e^+e^- storage ring PETRA using the TASSO detector. A description of the experimental setup and of the data analysis has already been published¹¹. We list here only the main points. The detector, which measures charged secondaries over approximately 87% of 4π , was triggered by demanding at least 3 tracks with a transverse momentum of more than 0.32 GeV/c with respect to the beam axis, at total energies $W = 2E_{\text{beam}} = 13$ and 17 GeV. At least 4 tracks were required at $W = 27.4, 27.7, 30,$ and 31.6 GeV. The hadronic events were separated from the beam gas background by demanding that the event vertex was in the interaction volume, and that the sum of the detected momenta were above 3 GeV/c at 13 GeV energy, above 4 GeV/c at 17 GeV energy, and above 9 GeV/c at the higher energies. Further cuts on the event topology essentially eliminated $\gamma\gamma$ and $\tau^+\tau^-$ events. The resulting detection efficiency varied with energy between 75% and 78%. The final data sample consists of 75 events at 13 GeV, 40 events at 17 GeV, 118 events at 27.4 and 27.7 GeV, 135 events at 30 GeV, and 40 events at 31.6 GeV. For the following analysis only tracks that reached at least the sixth zero degree layer in the drift chamber ($|\cos\theta| < 0.87$) and had transverse momentum relative to the beam axis of at least 0.10 GeV/c, are used. Hadrons resulting from kaon decays were not removed while electrons from pair conversion or Dalitz decays were removed.

The effects of the selection criteria described above, as well as the effects of measuring errors and the efficiencies of the pattern recognition programs and the whole analysis chain, were checked by propagating Monte Carlo events through the simulated detector and the analysis programs. It was thus ascertained that the results presented in this paper are not subject to any significant bias due to these sources.

The quark parton picture of the process $e^+e^- \rightarrow q\bar{q}$ is depicted in Fig. 1a. It will produce back-to-back jets of hadrons with typical transverse momenta of 0.30 GeV/c. In field theories of the strong interactions this picture will be modified^{9,12} to include other processes including the lowest order diagrams shown in Fig. 1b. The radiated field quanta (gluons) are also expected to evolve into jets of hadrons. This has clear experimental implications¹²⁻¹⁶: The p_T distribution of the final hadrons will broaden with increasing energy. If the coupling constant is less than one there will be a tendency for only one of the jets to be broadened. The $q\bar{q}$ state is necessarily planar; this should be reflected in the final hadron configuration which should retain the planarity with small transverse momenta with respect to the plane and large transverse momentum in the plane. If the gluon is radiated with a transverse momentum that is large compared to the typical transverse momentum of 0.30 GeV/c, then the event will have a three jet topology¹².

Since in e^+e^- interactions the direction of the jet axis is not known from the initial state, it has to be determined event by event from the final state hadrons. We have done this in two ways: Minimizing Σp_T^2 (which gives the sphericity axis)^{3,5} or maximizing $\Sigma |p_{Ti}|$ (which gives the thrust axis)^{13,17}. The sum-mations are over all observed hadrons. The results presented in this paper were generally found not to depend to any significant degree on the choice between these two possibilities*. Studies with Monte Carlo $q\bar{q}$ jets¹⁸ further showed that the jet axes so determined deviate by an average of less than 5° from the true jet axis at our higher energies.

* An exception is the "seagull effect" shown in Fig. 3. Here only the thrust axis is useful since the sphericity weights fast particles too heavily and thus biases the particles of high $z = p/p_{\text{beam}}$ towards small values of p_T .

The normalized transverse momentum distribution $1/\sigma \, d\sigma/dp_T^2$ evaluated with respect to the sphericity axis is plotted in Fig. 2 versus p_T^2 . The data at 13 GeV and 17 GeV are identical within statistics and are averaged; similarly the higher energy data between 27.4 GeV and 31.6 GeV are combined. The data at both energies are in reasonable agreement for $p_T^2 < 0.2 \text{ (GeV/c)}^2$ but the high energy data are well above the low energy data for larger values of p_T^2 . The average value of p_T^2 increases from $0.15 \pm 0.02 \text{ (GeV/c)}^2$ at 13 and 17 GeV, to $0.27 \pm 0.02 \text{ (GeV/c)}^2$ for the combined high energy data. The low energy data have been fitted for $p_T^2 < 1.0 \text{ (GeV/c)}^2$ with the jet model¹⁸ of Field and Feynman, extended to include c and b quarks¹⁹. In this model, the parameter σ_q determining the width of the p_T distribution was varied from the original value $\sigma_q = 0.25 \text{ GeV/c}$ to $\sigma_q = 0.30 \text{ GeV/c}$ to obtain a fit to our data. This is shown by the curve in Fig. 2. To fit the higher energy data with the Field-Feynman-model, σ_q must be increased to 0.45 GeV/c. This is in contradiction to the naive quark parton model which assumes the quark to fragment into hadrons with an energy-independent transverse momentum distribution. On the other hand field theories of the strong interactions naturally predict the transverse momentum to increase with energy due to gluon bremsstrahlung by one of the outgoing quarks. The production of a new quark flavour will also lead to an increase in the average value of p_T . We do not find any evidence for the production of a new flavour in agreement²⁰ with other groups at PETRA.

If hard noncollinear gluon emission is a rare process, then there should usually be only one such gluon in these events. Diving each event into two halves by a plane perpendicular to the jet axis and determining $\langle p_T^2 \rangle$ separately for the two sides, the "narrow" side should rarely have a noncollinear hard gluon. Thus $\langle p_T^2 \rangle_{\text{narrow}}$ will increase with energy less rapidly than $\langle p_T^2 \rangle_{\text{wide}}$. This is observed as shown in Fig. 3 where $\langle p_T^2 \rangle$ is plotted as a function of $z = p/p_{\text{beam}}$ for the wide and the narrow jet separately. The $q\bar{q}$ model with $\sigma_q = 0.30 \text{ GeV/c}$ is also plotted in Fig. 3a. It fits the data rather well at low energy;

the narrow-wide asymmetry is due to statistical fluctuations. The model fails to describe the data at high energies (Fig. 3b); however increasing σ_q to 0.45 GeV/c, obtained from the fit to the p_T^2 distribution, approximately reproduces the observed z distribution. Therefore we can fit, within the statistical uncertainties, both the p_T^2 distributions and the seagull plot at both energies by increasing the value of σ_q with energy.

Regardless of the value of $\langle p_T \rangle$ in the naive quark jet picture hadrons resulting from the fragmentation of the quark must be on the average uniformly distributed in azimuthal angle around the quark axis. Therefore, apart from statistical fluctuations, the 2 jet process $e^+e^- \rightarrow q\bar{q}$ will not lead to planar events whereas the radiation of a hard gluon, $e^+e^- \rightarrow q\bar{q}g$, will result in an approximately planar configuration of hadrons with large transverse momenta in the plane and small transverse momenta with respect to the plane. Thus the observation of such planar events at a rate significantly above the rate expected from statistical fluctuations of the $q\bar{q}$ jets shows in a model-independent way that there must be a third particle in the final state, which might be identified with a gluon.

The shape of the events is evaluated using the following method. For each event we construct the second rank tensor^{3,5} from the hadron momenta

$$M_{\alpha\beta} = \sum_{j=1}^N p_{j\alpha} p_{j\beta} \quad (\alpha, \beta = x, y, z)$$

summing over all N observed charged particles. Let \hat{n}_1, \hat{n}_2 , and \hat{n}_3 be the unit eigenvectors of this tensor associated with the smallest, intermediate, and largest eigenvalues Λ_1, Λ_2 and Λ_3 respectively. The principal jet axis is then the \hat{n}_3 direction, the event plane is the $\hat{n}_2 - \hat{n}_3$ plane, and \hat{n}_1 defines the direction in which the sum of the squared hadron momenta components

is minimized²¹). We compare in Fig. 4 the distribution of

$$\langle p_T^2 \rangle_{out} = \frac{1}{N} \sum_{j=1}^N (\vec{p}_j \cdot \vec{n}_1)^2 \quad (\text{the momentum component normal to the}$$

event plane squared) with that of $\langle p_T^2 \rangle_{in} = \frac{1}{N} \sum_{j=1}^N (\vec{p}_j \cdot \vec{n}_2)^2$ (the momentum component in the event plane perpendicular to the jet axis). The data show only little increase in $\langle p_T^2 \rangle_{out}$ between the low energy and the high energy point. The distribution of $\langle p_T^2 \rangle_{in}$ however becomes much wider at high energies, and in particular there is a long tail of events with a large value of $\langle p_T^2 \rangle_{in}$ not observed at lower energies. The curves show the expectations from the Monte Carlo $q\bar{q}$ jets. Hadrons resulting from pure $q\bar{q}$ events will on the average be distributed uniformly around the jet axis, however, some asymmetry between $\langle p_T^2 \rangle_{in}$ and $\langle p_T^2 \rangle_{out}$ is caused by statistical fluctuations. Fair agreement with the $q\bar{q}$ model is found both for $\langle p_T^2 \rangle_{in}$ and $\langle p_T^2 \rangle_{out}$ at the low energy point. Thus the asymmetry observed at this energy can be explained by statistical fluctuations only.

At the high energy, we find fair agreement between $\langle p_T^2 \rangle_{out}$ and the $q\bar{q}$ model with $\sigma_q = 0.30$ GeV/c, however the observed long tail of the $\langle p_T^2 \rangle_{in}$ -distribution is not reproduced by the model. This discrepancy cannot be removed by increasing the mean transverse momentum of the $q\bar{q}$ jets. The result from the model with $\sigma_q = 0.45$ GeV/c is also plotted in Fig. 4. The agreement is poor. We therefore conclude that the data include a number of planar events not reproduced by the $q\bar{q}$ model independent of the assumption on the average p_T in that model.

The normalized eigenvalues

$$Q_k = \lambda_k / \sum_{j=1}^3 \lambda_j^2$$

may be used for a more detailed study of the shape of the events. These normalized eigenvalues Q_k satisfy $Q_1 + Q_2 + Q_3 = 1$ and are arranged such that $0 \leq Q_1 \leq Q_2 \leq Q_3$. We express our data in terms

of two variables, aplanarity A and sphericity S

$$A = \frac{3}{2} Q_1 = \frac{3}{2} \langle p_T^2 \rangle_{out} / \langle p^2 \rangle$$

$$S = \frac{3}{2} (Q_1 + Q_2) = \frac{3}{2} \langle p_T^2 \rangle / \langle p^2 \rangle .$$

All the events are then inside a triangle shown in Fig. 5, where S is the hypotenuse of the triangle. The event distribution in A and S is shown in Fig. 5, for the low energy and high energy data separately.

Collinear 2-jet events lie in the left hand corner (A, S small), uniform disk shaped events in the upper corner (A small, S large), and spherical events in the lower right hand corner (A, S large), while coplanar events will occupy a band along the larger of the two small sides of the triangle in Fig. 5.

Collinear 2-jet events are seen to dominate at all energies, the collinearity being most pronounced at the highest energy. We exclude these events and select the candidates for planar events by requiring that $A < 0.04$ and $S > 0.25$. At 13 and 17 GeV we observe 6 events in this region compared to 3.5 events predicted by the $q\bar{q}$ model with $\sigma_q = 0.30$ GeV/c. At the higher energies we find 18 events compared to 4.5 events predicted by the $q\bar{q}$ -model independent of σ_q between 0.30 and 0.45 GeV/c. As an independent test of the planar structure, a randomization procedure* was applied to the data to destroy any natural correlations. This estimate of accidentally planar events yields 6 events in the 13 - 17 GeV data and 4 events in the higher energy data. Thus at the higher energies there is an excess of planar events well above the level predicted from statistical fluctuations of the $q\bar{q}$ jets. This shows that $e^+e^- \rightarrow$ hadrons proceeds via the creation and decay of at least three primary particles that

* The sphericity axis was chosen as a reference, and all tracks were rotated by a random azimuthal angle around the jet direction; this preserves both p_T and $p_{||}$. Then at random the sign of $p_{||}$ was changed.

subsequently fragment into hadrons. Field theories of the strong interactions predict such a topology resulting from the radiation of a field quantum (gluon) by one of the quarks - i.e. $e^+e^- \rightarrow q\bar{q}g$.

If this is the correct explanation and the gluon materializes as a jet of hadrons with limited transverse momentum then a small fraction of the events should display a three jet structure. The events were analyzed for a three jet structure as described in ref.21. All the coplanar events gave a good fit to the 3 jet hypothesis. We further determined the transverse momenta of the hadrons with respect to the axis to which they were assigned. For the 18 events defined above we find an average transverse momentum of about 0.30 GeV/c, close to the mean p_T observed in two jet events at lower energies.

To compare this new class of 3-jet events with the predominant class of 2-jet events, Fig. 6 shows a characteristic event of each type in momentum space in all three projections. Fig. 6a, 6d and 6g show a 2-jet and two 3-jet events respectively in the $\bar{n}_2 - \bar{n}_3$ plane; this is the plane containing the largest components of momenta. The first event shows 2 clearly delineated jets. The 3-jet events, on the other hand, show a much broader distribution of momenta transverse to the \bar{n}_3 axis. Fig. 6b, 6e and 6h show the projection on the plane perpendicular to the jet direction (\bar{n}_3). Here one clearly sees the small transverse momenta for the 2-jet event and the tendency of the large transverse momentum to lie along the \bar{n}_2 direction for the 3-jet events. Finally Figs. 6c, 6f and 6i show the remaining projection on the $\bar{n}_1 - \bar{n}_3$ plane.

In summary, we have studied $e^+e^- \rightarrow$ hadrons for values of Q^2 between 170 (GeV/c)² and 1000 (GeV/c)². We observe a change in the p_T^2 distribution and a strong increase of $\langle p_T^2 \rangle$ with increasing energy. This increase occurs predominantly in only one of the two jets. The distribution of the transverse momentum perpendicular to the "event plane" does not show a pronounced energy dependence while a strong broadening takes place in the

event plane at the highest values of Q^2 . We observe planar events at a rate which is well above the rate computed for statistical fluctuations of the $q\bar{q}$ jets. The planar events exhibit three axes, the average transverse momentum of the hadrons with respect to these axes being 0.30 GeV/c. This establishes in a model independent way that a small fraction of the e^+e^- annihilation events proceeds via the emission of three primary particles, each of which materializes as a jet of hadrons in the final state. The data are most naturally explained by hard noncollinear bremsstrahlung $e^+e^- \rightarrow q\bar{q}g$. Indeed the data are in agreement with predictions based on first order perturbative QCD as will be discussed in a forthcoming paper.

Acknowledgements

We thank the DESY directorate for its strong support of this experiment. We are grateful for the diligent efforts of the PETRA machine group which made this experiment possible. We are indebted to all the engineers and technicians of the collaborating institutions who have participated in the construction and maintenance of TASSO. The excellent cooperation with the technical support groups at DESY and at the Rutherford Lab. is gratefully acknowledged. The Wisconsin group thanks the Physics Department of the University of Wisconsin for support, especially the High Energy Group and the Graduate School Research Committee.

References

- 1) S.D. Drell, D.J. Levy, and T.M. Yan, *Phys.Rev.* 187 (1969) 2159, and *Phys.Rev.* D1 (1970) 1617.
- 2) N. Cabibbo, G. Parisi, and M. Testa, *Lett.Nuovo Cimento* 4 (1970) 35.
- 3) J.D. Bjorken and S.J. Brodsky, *Phys.Rev.* D1 (1970) 1416.
- 4) R.P. Feynman, *Photon-Hadron Interactions* (Benjamin, Reading, Mass., 1972), p. 166.
- 5) G. Hanson et al., *Phys.Rev.Lett.* 35 (1975) 1609.
- 6) Ch. Berger et al., *Phys.Letters* 78B (1978) 176.
- 7) Evidence for planar events in e^+e^- annihilation has been reported earlier: B.H. Wiik, *Proceedings of the International Neutrino Conference, Bergen, Norway, 18-22. June 1979*; R. Cashmore, P. Söding and G. Wolf, *Proceedings of the EPS International Conference on High Energy Physics, Geneva, Switzerland, 27 June - 4 July, 1979*. The present results are based on a fivefold increase of statistics.
- 8) E.M. Riordan et al., SLAC Preprint PUB-1639 (1975); D.J. Fox et al., *Phys.Rev.Lett.* 37 (1974) 1504; H.L. Anderson et al., *Phys.Rev.Lett.* 37 (1976) 4; P.C. Bossetti et al., *Nucl.Phys.* B142 (1978) 1; J.G.H. de Groot et al., *Particles and Fields* (Z. Physik C) 1 (1979) 143; *Phys.Lett.* 82B (1979) 292, 456.
- 9) J. Kogut and L. Susskind, *Phys.Rev.* D9 (1974) 697, 3391; A.M. Polyakov, *Proc. 1975 Int. Symp. on Lepton and Photon Interactions at High Energies, Stanford, ed. W.T. Kirk* (SLAC Stanford (1975)), p. 855.
- 10) PLUTO Collaboration, Ch. Berger et al., *Phys.Lett.* 82B (1979) 449; S. Brandt, Paper presented at the International Conference on High Energy Physics, Geneva 27 June - 4 July 1979.
- 11) TASSO Collaboration, R. Brandelik et al., *Phys.Lett.* 83B (1979) 201.
- 12) J. Ellis, M.K. Gaillard and G.G. Ross, *Nucl.Phys.* B111 (1976) 253 (erratum B130 (1977) 516).
- 13) A. de Rújula, J. Ellis, E.G. Floratos, and M.K. Gaillard, *Nucl.Phys.* B138 (1978) 387.
- 14) T.A.DeGrand, Yee Jack Ng, and S.-H.H. Tye, *Phys.Rev.* D16 (1977) 3251.
- 15) P. Hoyer, P. Osland, H.G. Sander, T.F. Walsh and P.M. Zerwas, *DESY 78/21*, to be published.
- 16) G. Kramer and G. Schierholz, *DESY 78/62*, to be published.
- 17) E. Fahri, *Phys.Rev.Lett.* 39 (1977) 1587; S. Brandt and H.D. Dahmen, *Particles and Fields* (Z. Physik C) 1 (1979) 61.
- 18) B. Anderson, G. Gustafson and C. Peterson, *Nucl.Phys.* B135 (1978) 273; R.D. Field and R.P. Feynman, *Nucl.Phys.* B136 (1978) 1; For the comparison with the data we used the version given by Field and Feynman.
- 19) The branching ratios for B meson decay were taken from A. Ali, J.G. Körner, J. Willrodt and G. Kramer, *DESY 78/67*, to be published.
- 20) See papers contributed by JADE, MARK J, PLUTO and the TASSO Collaborations to the 1979 International Symposium on Lepton and Photon Interactions at High Energies, August 23-29, 1979, Batavia, Illinois, USA.
- 21) S.L. Wu and G. Zobernig, *Particles and Fields* (Z. Physik C) 2 (1979) 107.

Figure Captions:

Fig. 1a,b Quark pair production and gluon bremsstrahlung to lowest order.

Fig. 2 $1/\sigma \, d\sigma/dp_T^2$ at 13 and 17 GeV (o) combined and for 27.4 GeV, 27.7 GeV, 30.0 GeV and 31.6 GeV combined (●) as a function of p_T^2 . The curves are fits to the data for $p_T^2 < 1.0 \text{ GeV}/c$ using the Field-Feynman quark-parton model including u, d, s, c and b quarks with σ_q as a free parameter.

Fig. 3a,b $\langle p_T^2 \rangle$ as a function of $z = p/p_{\text{beam}}$ for the wide and narrow jet separately, for the low energy (a) and the high energy (b) data. The curves show the prediction from the $q\bar{q}$ -model¹⁸⁾ with $\sigma_q = 0.30 \text{ GeV}/c$ (solid curve) and $\sigma_q = 0.45 \text{ GeV}/c$ (dotted curve). The model includes u, d, s, c and b quarks.

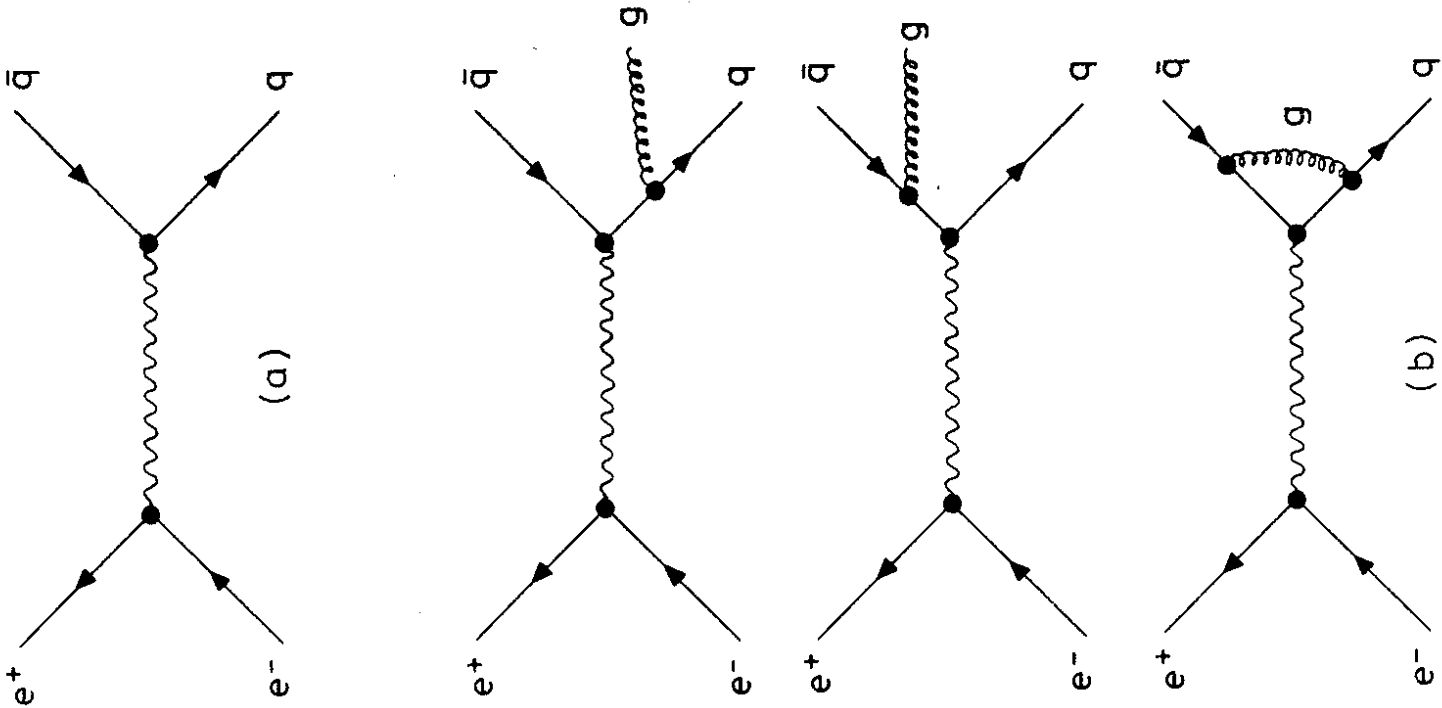
Fig. 4 The mean transverse momentum squared normal to the event plane $\langle p_T^2 \rangle_{\text{out}}$ and in the event plane $\langle p_T^2 \rangle_{\text{in}}$ in per event for the low energy and the high energy data. The predictions from the quark model¹⁸⁾ are shown assuming $\sigma_q = 0.30 \text{ GeV}/c$ (solid curves) and $\sigma_q = 0.45 \text{ GeV}/c$ (dotted curve). The model includes u, d, s, c and b quarks.

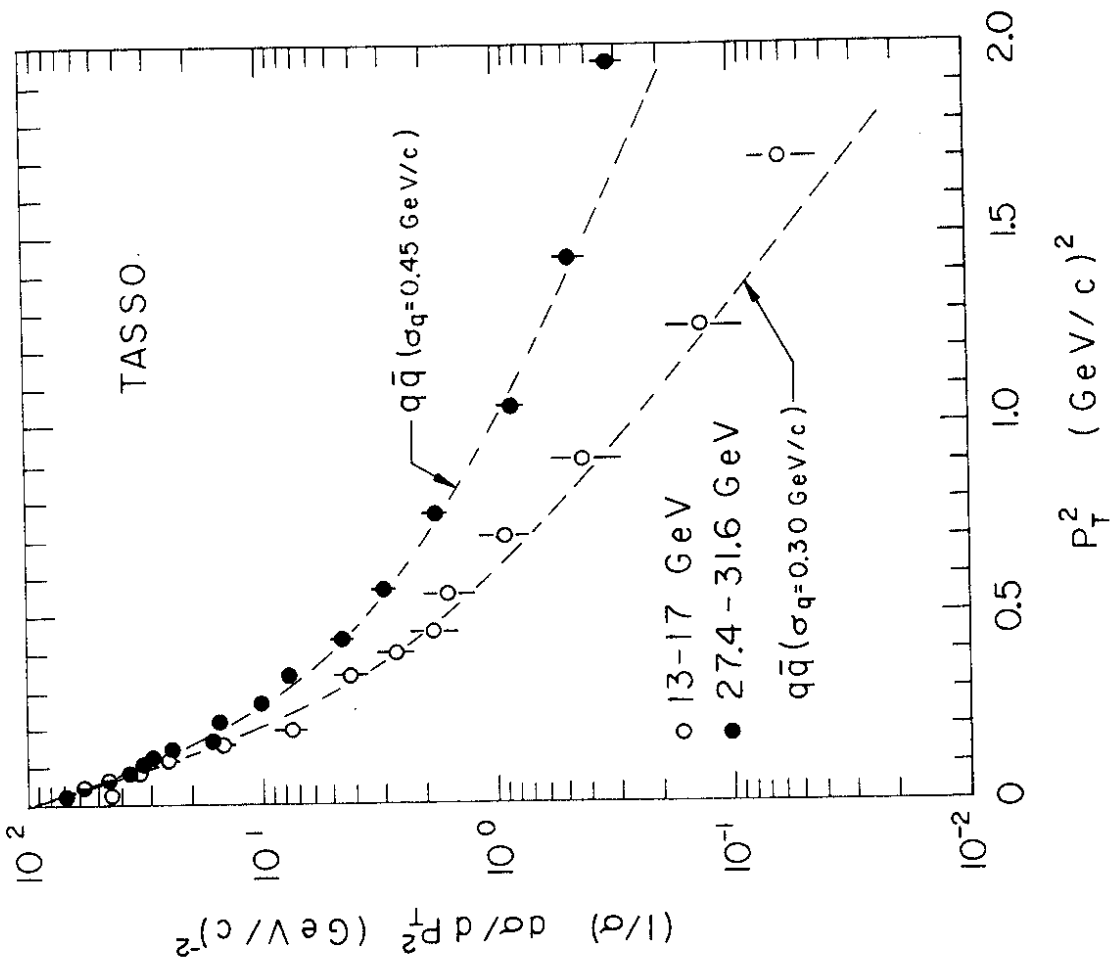
Fig. 5a,b Distribution of the events as a function of aplanarity

$$A = \frac{3}{2} Q_1 = \frac{3}{2} \frac{\langle p_T^2 \rangle_{\text{out}}}{\langle p_T^2 \rangle} \quad \text{and sphericity } S = \frac{3}{2} (Q_1 + Q_2) = \frac{3}{2} \frac{\langle p_T^2 \rangle}{\langle p_T^2 \rangle}$$

for the low (a) and high (b) energy data.

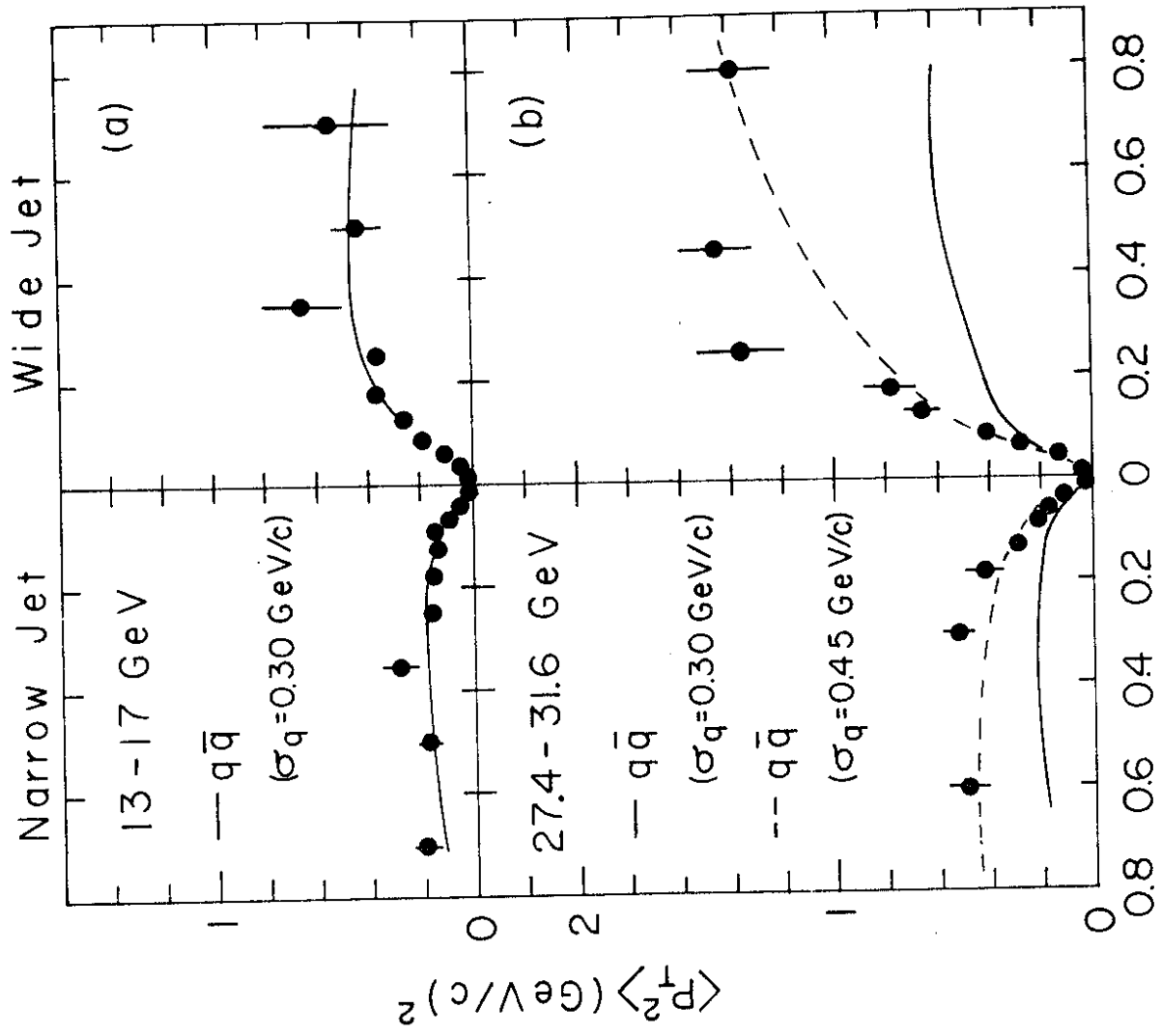
Fig. 6 Momentum space representation of a 2-jet event (a-c) and two 3-jet events (d-f) and (g-i) in each of three projections. (a,d,g) = $\hat{n}_2 - \hat{n}_3$ plane; (b,e,h) = $\hat{n}_1 - \hat{n}_2$ plane; (c,f,i) = $\hat{n}_1 - \hat{n}_3$ plane. The dotted lines show the fitted jet axes.





19.8.79

Fig. 2



Z = P / P Beam

27.8.79

29183

Fig. 3

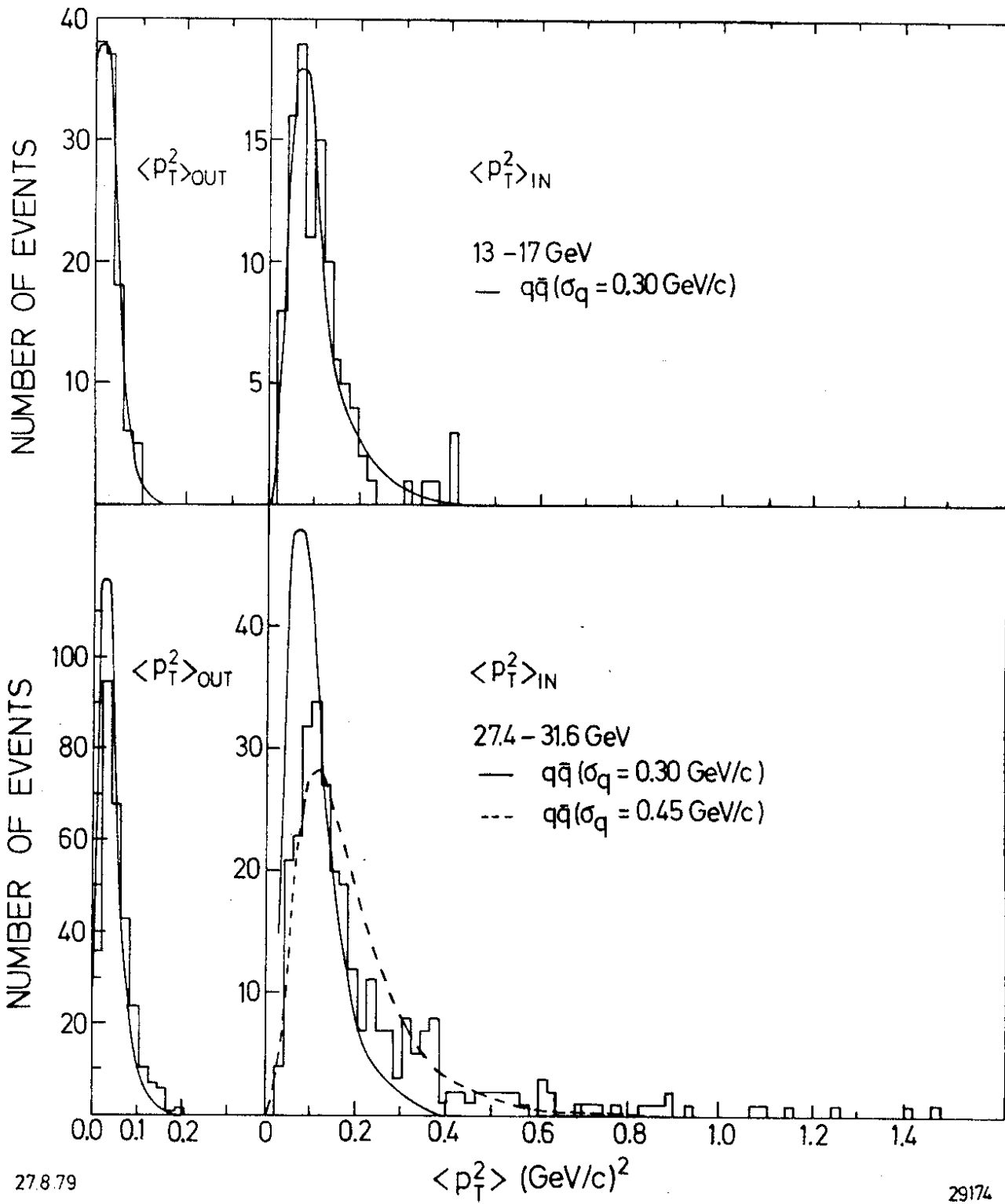
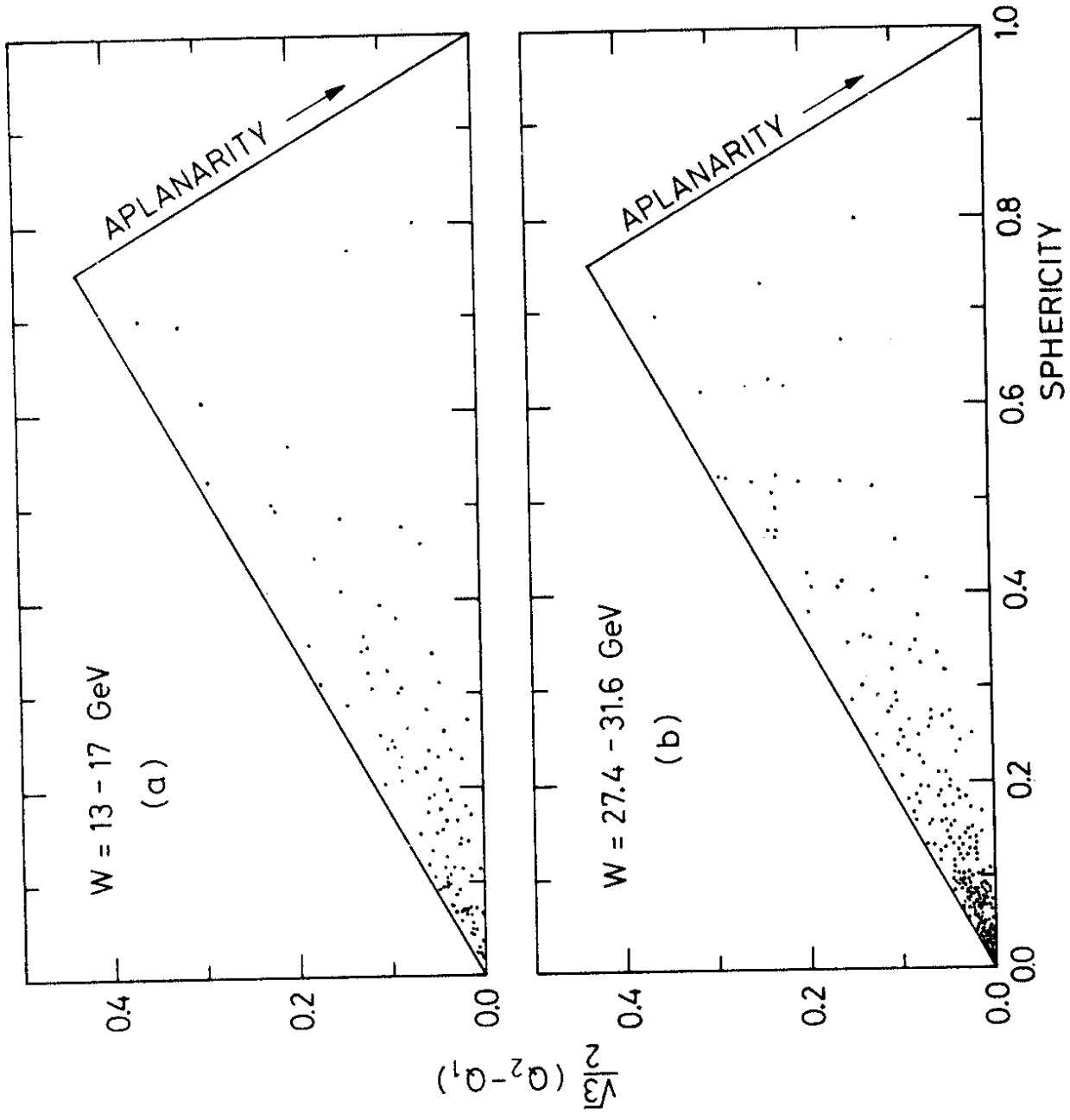


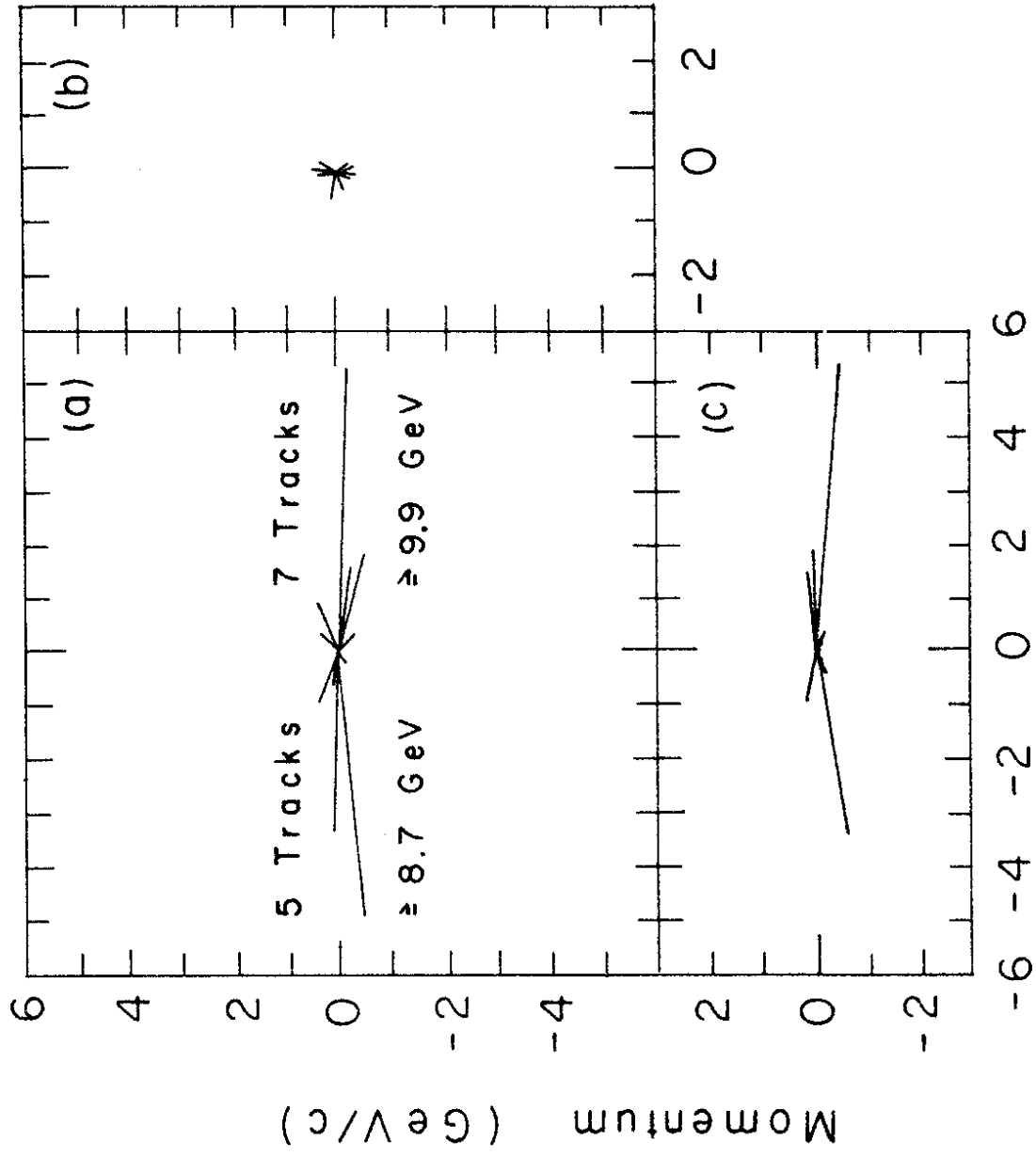
Fig. 4



29169

27.8.79

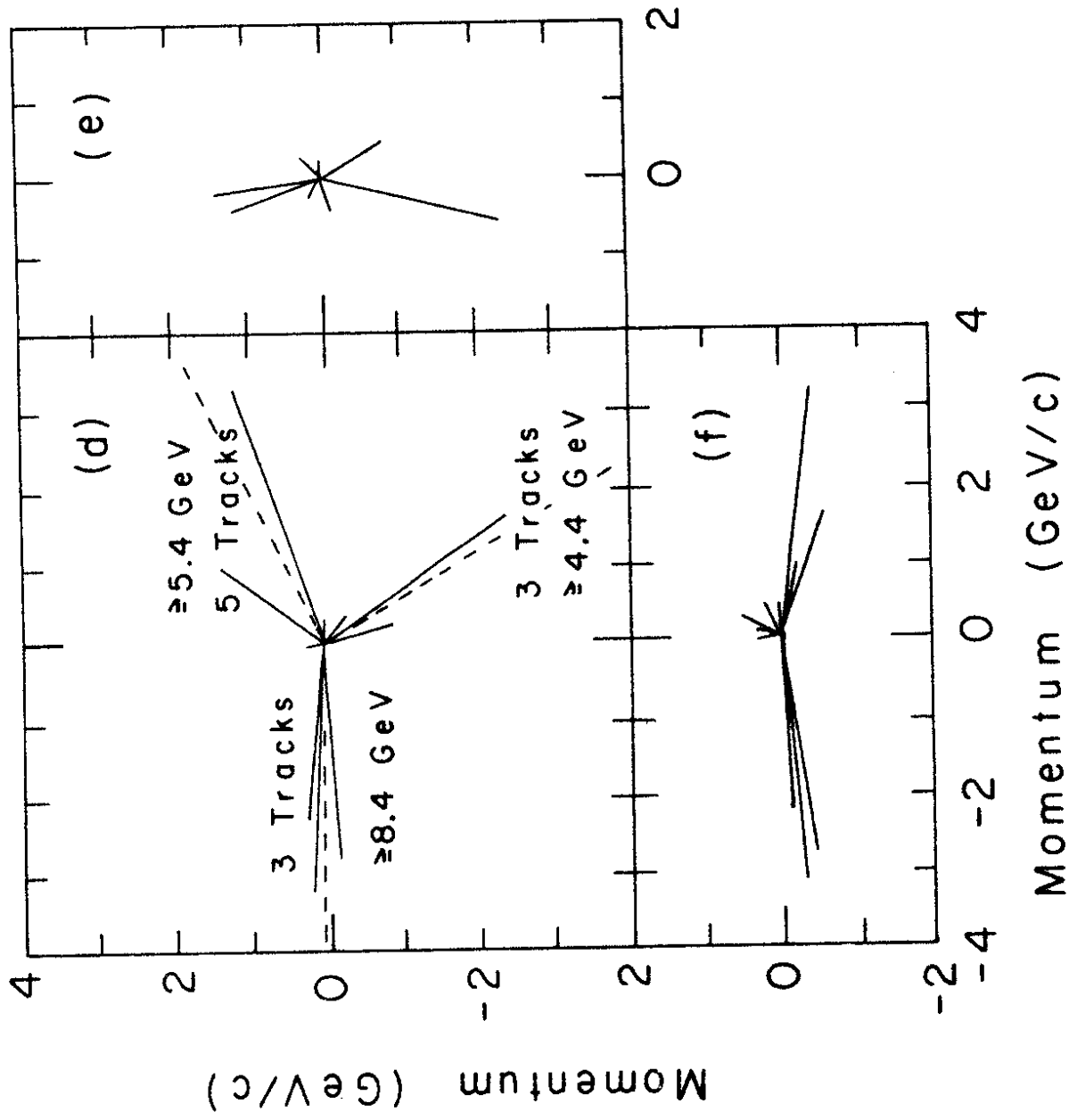
Fig. 5



24.8.79

29175

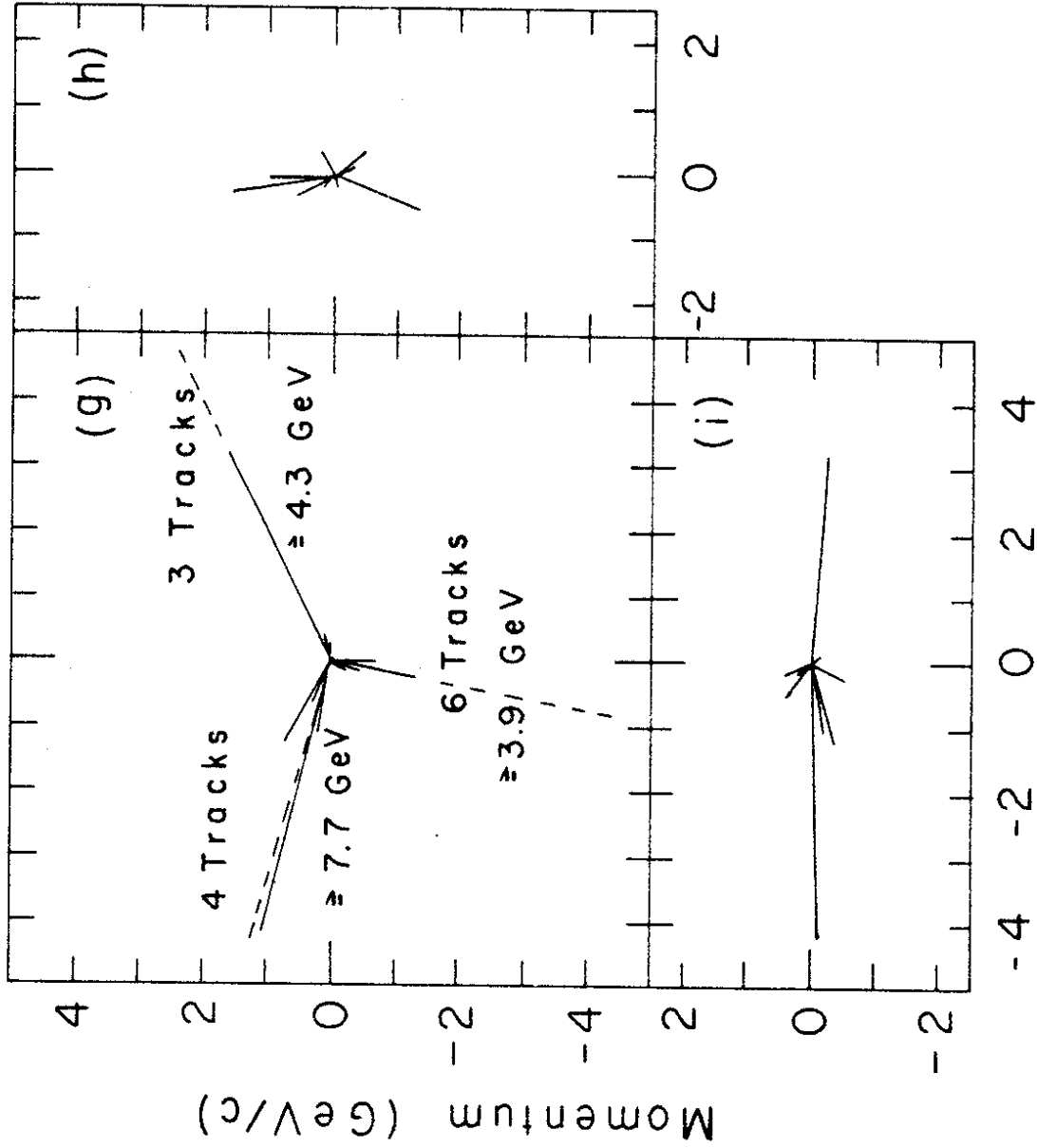
Fig. 6



29176

Fig. 6

23.8.79



24.8.79

29170

Fig. 6