



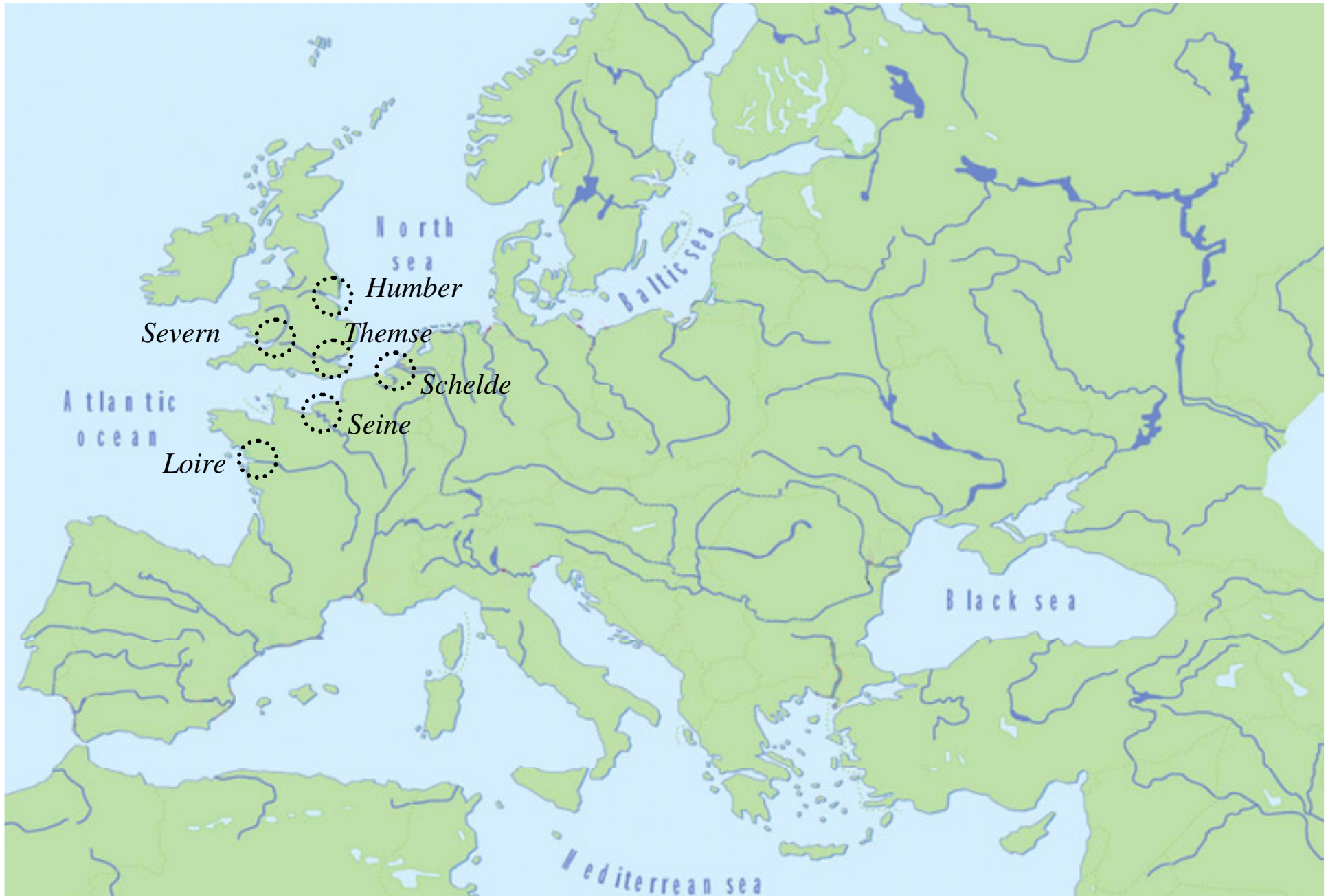
# Ästuarmanagement: Beispiele aus Europa

Von Boris Hochfeld





Die wichtigsten Flüsse Europas



Europäische Ästuare - Beispiele





Die Loire

## Probleme

- mTnw-Absenk
- hohe Strömungsgeschwindigkeiten
- zunehmende Salinität
- Verlandung/Verschlickung
- ökologische Verluste, z.B. Laichgründe



## Lösungsansätze

~ 600 Mio €

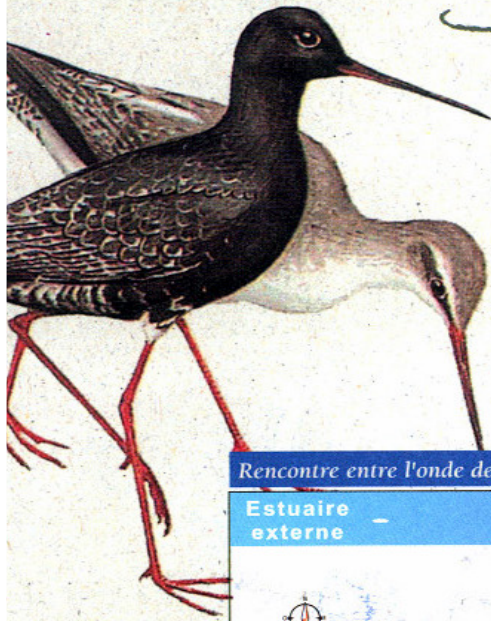
? geregeltes Wehr

! "Room for the River"

- Verteilung des Tidevolumens
- Vergrößerung des Tidevolumens
- Schaffung von Flachwasserzonen
- Reaktivierung eines Mehrkanal-Systems



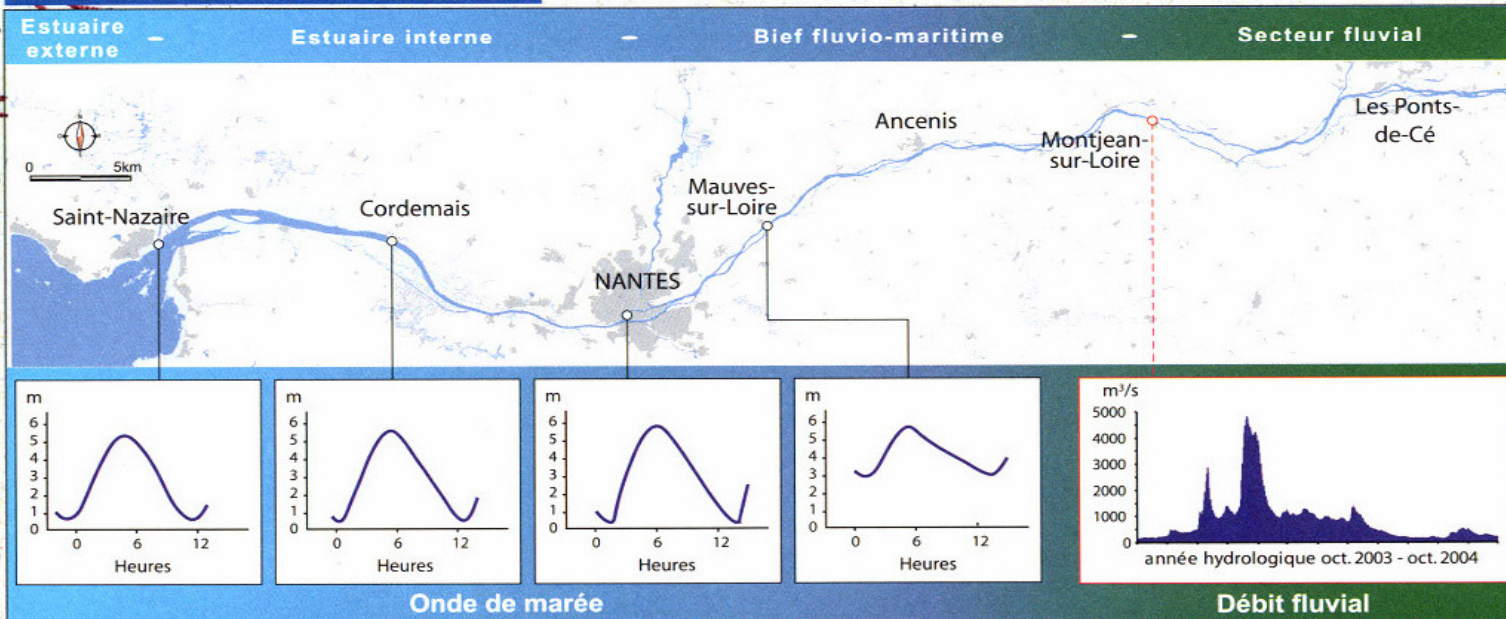
# Si la Loire océane était



Elle serait la rencontre du fleuve et de l'océan, de la terre et de l'eau, de la vase et du sable... Une rencontre insolite, opposant à la régularité et la permanence des cycles marins, l'impétuosité et l'inconstance de la Loire. Plus qu'une rencontre, une fusion, unissant l'eau douce à l'eau salée, mêlant l'énergie de la marée, à l'énergie de la Loire.



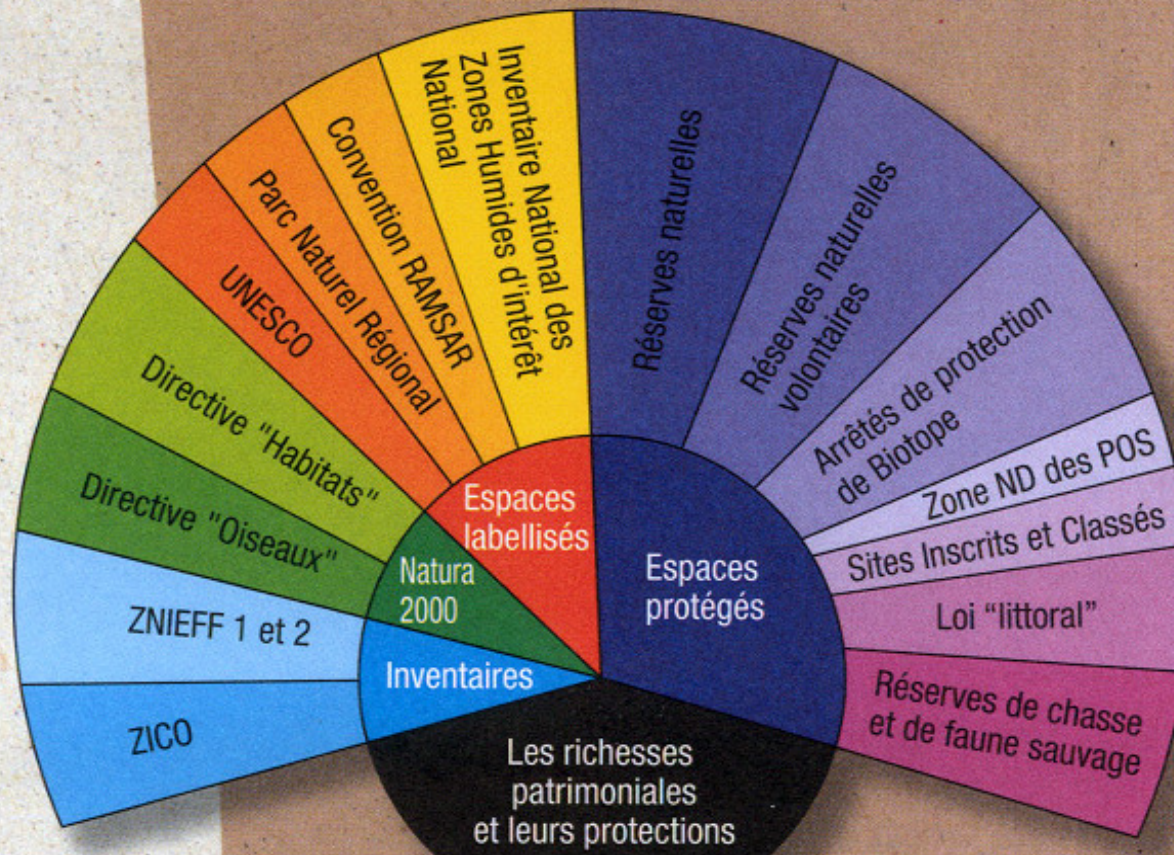
Rencontre entre l'onde de marée et l'eau du fleuve



Sources : PANSN 1996, CORINE Land Cover 1989-1994, BD Carthage®, Banque HYDRO / DIREN SEMA PdL, GIP Loire Estuaire 2004



# Un éventail d'outils de contrôle ou d'intervention



Die Loire





Die Seine



# Evolution du Programme Seine-Aval

## UNE RÉPONSE ÉVOLUTIVE...

**1965**  
Premières mesures de qualité des eaux de la Seine par le Service Navigation de la Seine

**1978**  
1<sup>er</sup> programme de recherche (SAUM)

**1993**  
Réunion d'une cinquantaine de scientifiques pour une première réflexion autour des problématiques estuariennes

**1993-1994**  
Campagnes de mesures pré-Seine-Aval

**1995**  
Lancement du Programme Seine-Aval (Contrat de Plan Interrégional du Bassin Parisien)

**2000**  
Projet de Plan de Gestion globale de l'Estuaire par le Conseil de l'Estuaire

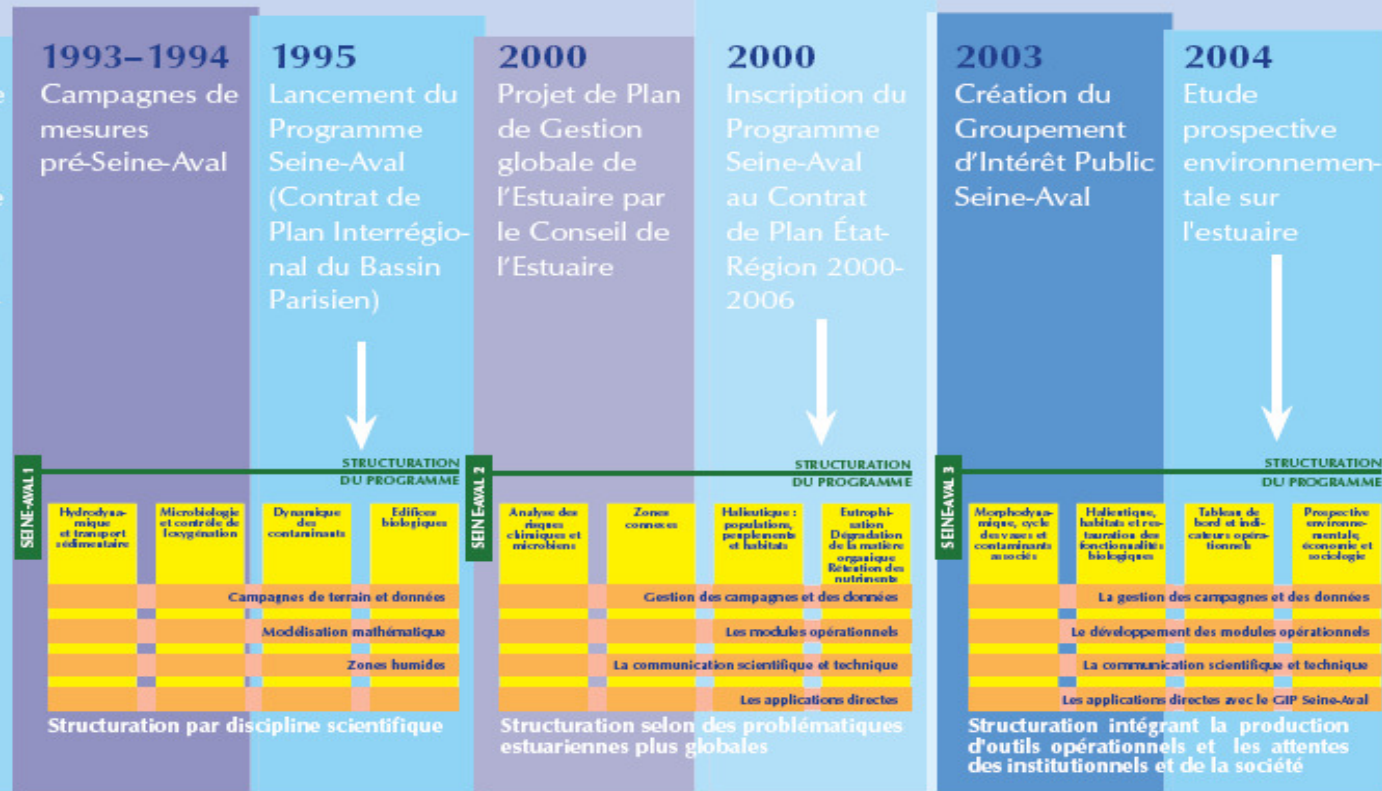
**2000**  
Inscription du Programme Seine-Aval au Contrat de Plan État-Région 2000-2006

**2003**  
Création du Groupement d'Intérêt Public Seine-Aval

**2004**  
Etude prospective environnementale sur l'estuaire

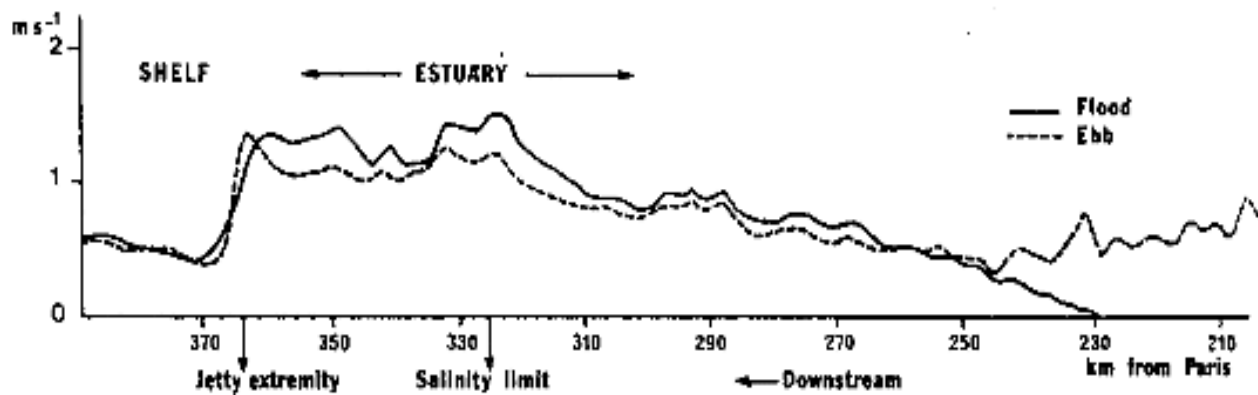
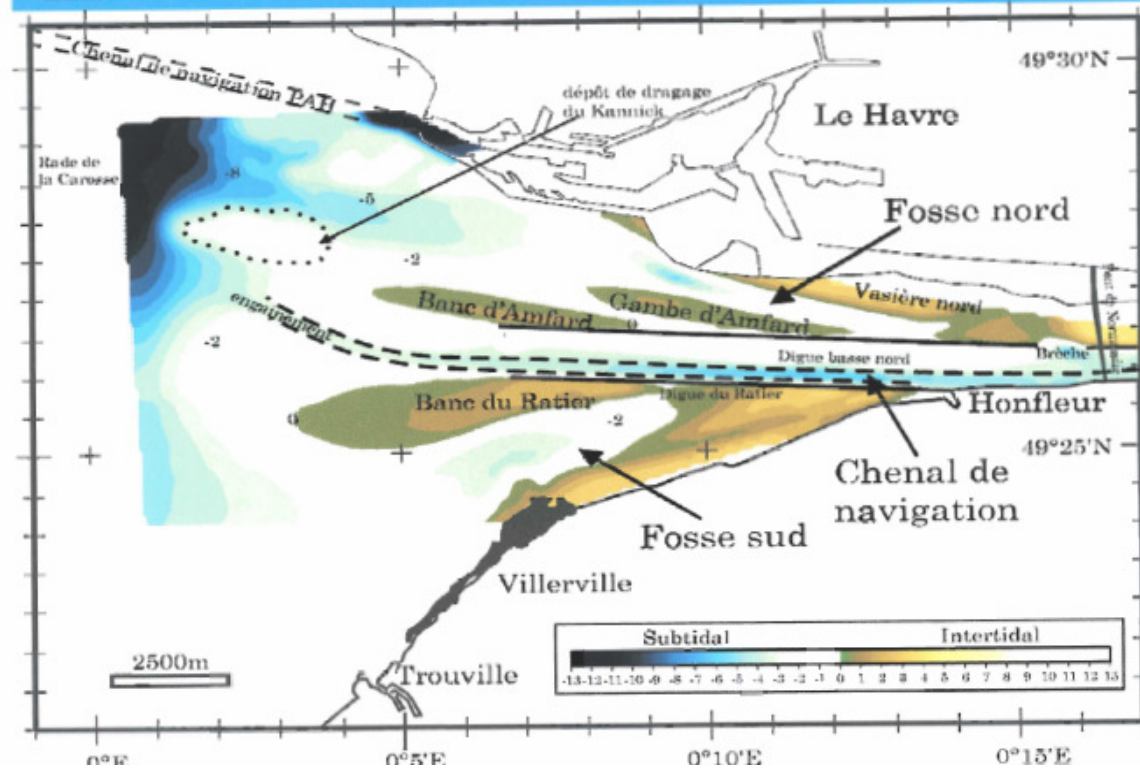


REGIS HOODIE

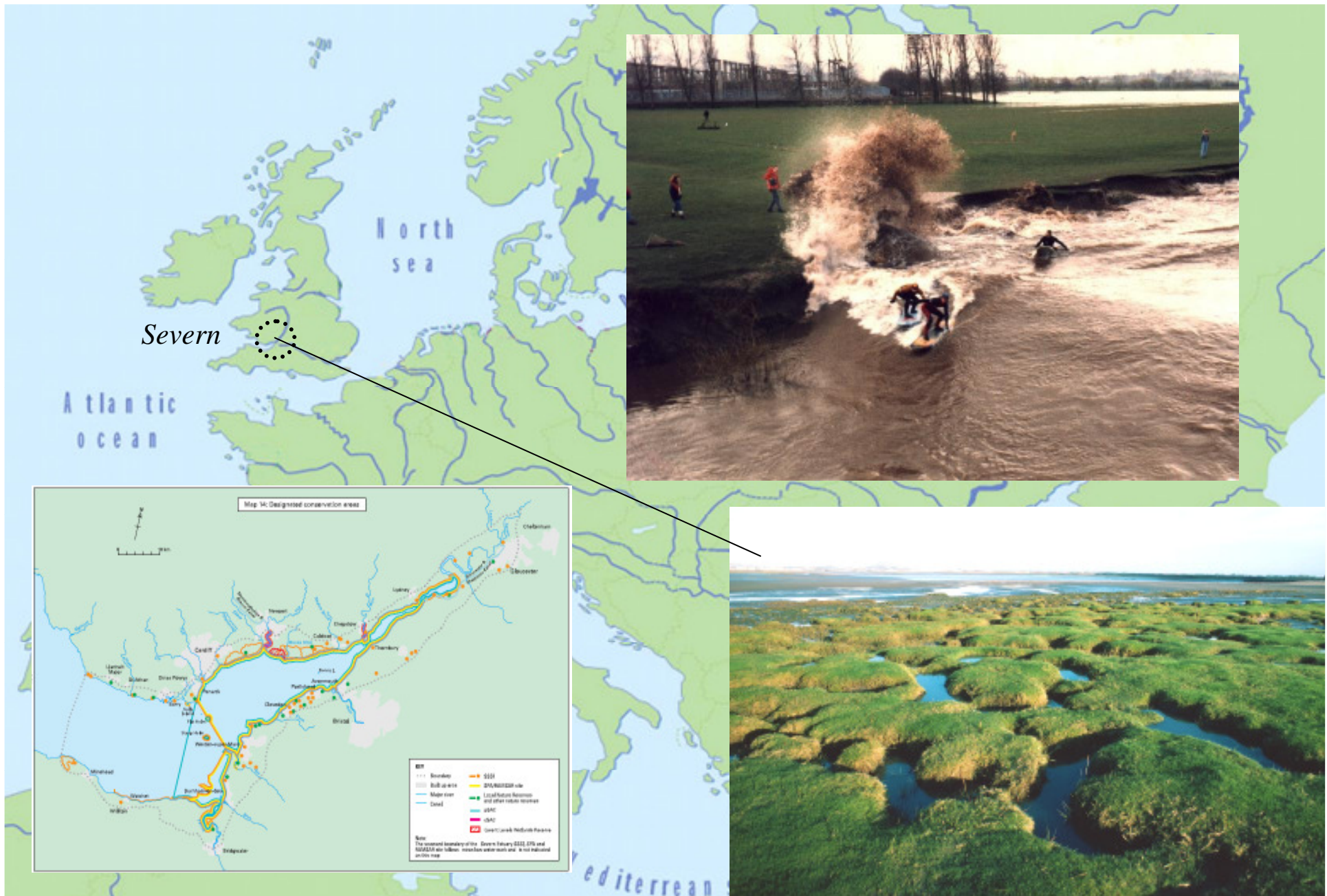


programme scientifique









# Der Severn



## National and Regional Government

The Parliamentary Maritime Group  
Department of the Environment, Food and  
Rural Affairs, DEFRA  
Government Office for the South West  
Welsh Assembly Government

## Local Authorities

Bristol City Council  
Cardiff Council  
Forest of Dean District Council  
Gloucester City Council  
Gloucestershire County Council  
Monmouthshire County Council  
Newport City Council  
North Somerset Council  
Sedgemoor District Council  
Somerset County Council  
South Gloucestershire Council  
Stroud District Council  
Tewkesbury Borough Council  
The Vale of Glamorgan  
Weston-Super-Mare Town Council  
West Somerset District Council

## Statutory Agencies

Cadw: Welsh Historic Monuments  
Caldicot & Wentloog Levels IDB  
Countryside Council for Wales  
English Heritage  
English Nature  
Environment Agency Wales  
Environment Agency  
South West of England Regional Development Agency  
Welsh Development Agency

## Non-Statutory Agencies

Wales Coastal and Maritime Partnership

## Ports and Harbours

Associated British Ports, ABP  
Cardiff Harbour Authority  
Gloucester Harbour Trustees  
Newport Harbour Commissioners  
Sedgemoor/Bridgwater Harbour Authority  
The Bristol Port Company  
UK Nationwide Organisations  
Country Land and Business Association, Avon/Somerset  
National Farmers Union (South West)  
National Farmers Union (Wales)  
South West Tourism Ltd  
Sports Council for Wales  
Sport England  
Wales Tourist Board

## Estuary Management and Research Groups

Association of Severn Estuary Relevant Authorities (ASERA)  
Bristol Channel Counter Pollution Association (BCCPA)  
North Devon & Somerset Coastal Group (ND&SCG)  
Severn Estuary Coastal Group (SECG)  
Severn Estuary Conservation Group  
Severn Estuary Partnership, SEP  
Standing Conference of Severnside Local Authorities (SCOSLA)

## The Private Sector

Associated British Ports, ABP  
British Energy  
British Waterways  
The Bristol Port Company  
Business West, West England Strategic Partnership  
C.F. Spencer & Co. Ltd  
Confederation of British Industries  
Countryside Agency for the South West  
Crest Nicholson Marina's Ltd.  
Institute of Chartered Shipbrokers  
Paul Fairweather Co. Ltd.  
Severn Trent Plc.  
Welsh Water-Dwr Cymru  
Wessex Water  
Westminster Dredging Company Ltd.

## Environmental Groups

Bristol Regional Environmental Records Centre (BRERC)  
British Association for Shooting and Conservation  
Cardiff Naturalists Society  
Council for the Protection of Rural England  
Farming and Wildlife Advisory Group  
Gwent Wildlife Trust  
RSPB England  
RSPB Cymru  
Wentloog Wildfowling & Conservation Association  
WWT Slimbridge  
Local Community / Action Groups  
Clevedon Civic Society  
Parents Concerned About Hinkley  
Severn Princess Preservation Group

## Recreation Groups

Barry Yacht Club  
Brean Land Yacht Club  
Bristol Channel Yachting Conference  
Bristol Cruising Club  
National Association of Boat Owners  
National School Sailing Association  
Portishead Cruising Club  
Ramblers Association  
Seaview Lad's Fishing Club  
Sustrans  
Welsh Yachting Association  
Weston Bay Yachting Club Ltd.  
Youth Hostel Association, England and Wales  
Culture and Archaeology  
Bristol and Gloucestershire Archaeological Society  
Bristol City Museum and Art Gallery  
Cadw: Welsh Historic Monuments  
English Heritage  
Glamorgan - Gwent Archaeological Trust Ltd.  
Severn Estuary Levels Research Committee  
Welsh Historic Gardens Trust  
University and Research  
Cardiff University  
Severn Estuary Levels Research Committee  
Severn Estuary Research Group  
University of Glamorgan  
University of Wales College, Newport

## Other Estuary and Coastal sites

Westminster Dredging Company Ltd.



# Severn Estuary Partnership

Working in partnership for the future of the Severn Estuary



The Estuary The Partnership Who's Who Publications What's New Contact Us

## Severn Wonders Festival 2006



Discover the...

### Severn Wonders Festival 2006

A Festival of events to celebrate the Severn Estuary  
May 20th - June 10th 2006

Severn Estuary Partnership  
[www.severnport.org.uk/sep/](http://www.severnport.org.uk/sep/)  
Tel: 01492 616133



<http://www.severnestuary.net/sep/>

Severn Estuary Partnership - SEP





# Our vision for the Severn Estuary:

Strategy for the  
Severn Estuary

***A vibrant and prosperous  
community, working in  
partnership for a clean and  
pleasant Estuary environment,  
valued and protected for  
generations to come***

<http://www.severnestuary.net/sep/>



✓ **Agriculture**

✓ **Coastal Protection and Flood Defence**

✓ **Tourism, Recreation and Access**

✓ **Ports, Shipping and Navigation**

✓ **Waste Management and Pollution**

✓ **Aggregates and other Minerals**

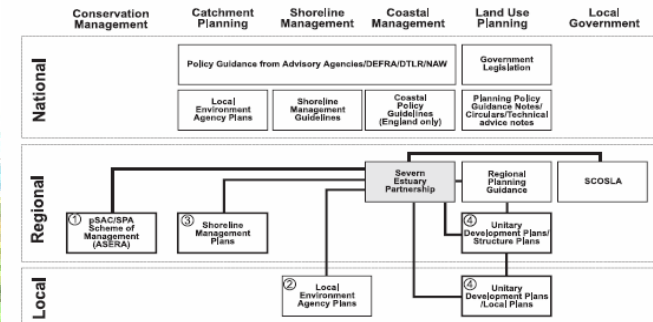
✓ **Water Resources**

✓ **Fisheries**

✓ **Landscape and Seascape**

✓ **Nature Conservation and Wildlife**

✓ **Archaeology**



- ① possible Special Area of Conservation/Special Protection Areas (under EU Habitats and Birds Directives).
- ② Local Environment Agency plans for water catchment areas.
- ③ Shoreline Management Plans covering coastal defence.
- ④ Development plans prepared by Local Planning Authorities.

Strategy for the Severn Estuary - SUMMARY

4. Agriculture

**Aim:**  
To promote viable and sustainable agriculture and associated communities, so they may operate in a way that is resilient to the Estuary environment and surrounding countryside.

Agriculture is the most common use of land around the Estuary, with a long and continuing history of private ownership and farming activities alongside traditional farming communities. Agriculture is important to the rural economy and there is a need to encourage sustainable farming practices. There is continued pressure for farmers to maintain farm incomes and to diversify their activities, such as providing facilities for commercial re-use, recreation and tourism and to provide for public access. Conservation initiatives may also be a source of income, whilst providing positive help for farmers to conserve and enhance wildlife. These measures are positively encouraged by Government initiatives.

**Proposals for action include:**

Proposals for Action	Who could be involved?	Benefits
<p>01 01 Encourage opportunities for Severn and Sandhams to be included in Countryside Stewardship Farm Incomes, LEAP, LEAPF and the LEAPF scheme.</p>	<p>LEA, SEI, DEFRA, CMA, DEFURHAM, DEFRA, Government Agency</p>	<ul style="list-style-type: none"> <li>• Establishment of working relationships between those with statutory duties and those who manage the land.</li> <li>• Better understanding of each other's roles and needs.</li> <li>• Better management and use of the countryside.</li> <li>• Cooperation between all organisations involved.</li> </ul>
<p>02 02 Promote farming diversification schemes from trails, cycle hire facilities, commercial farms for accommodation, coastal trails and other infrastructure for 'green tourism'.</p>	<p>Wiltshire Tourism, DEFURHAM, CMA, FISH, CA, COC, Wiltshire, SEI</p>	<ul style="list-style-type: none"> <li>• Program to work a sustainable rural tourism economy.</li> <li>• Best use of farm facilities.</li> <li>• Appropriate access for the general public.</li> </ul>



Die Themse





ThamesWEB Tel: 020 7679 5299 | email: [tep@thamesweb.com](mailto:tep@thamesweb.com)  
Designed and implemented by [SP Internet Consultancy](#)

[www.thamesweb.com](http://www.thamesweb.com)

# Management Guidance for the Thames Estuary

Today's Estuary for Tomorrow

## Thames Estuary Issues and Opportunities: Principles for Action

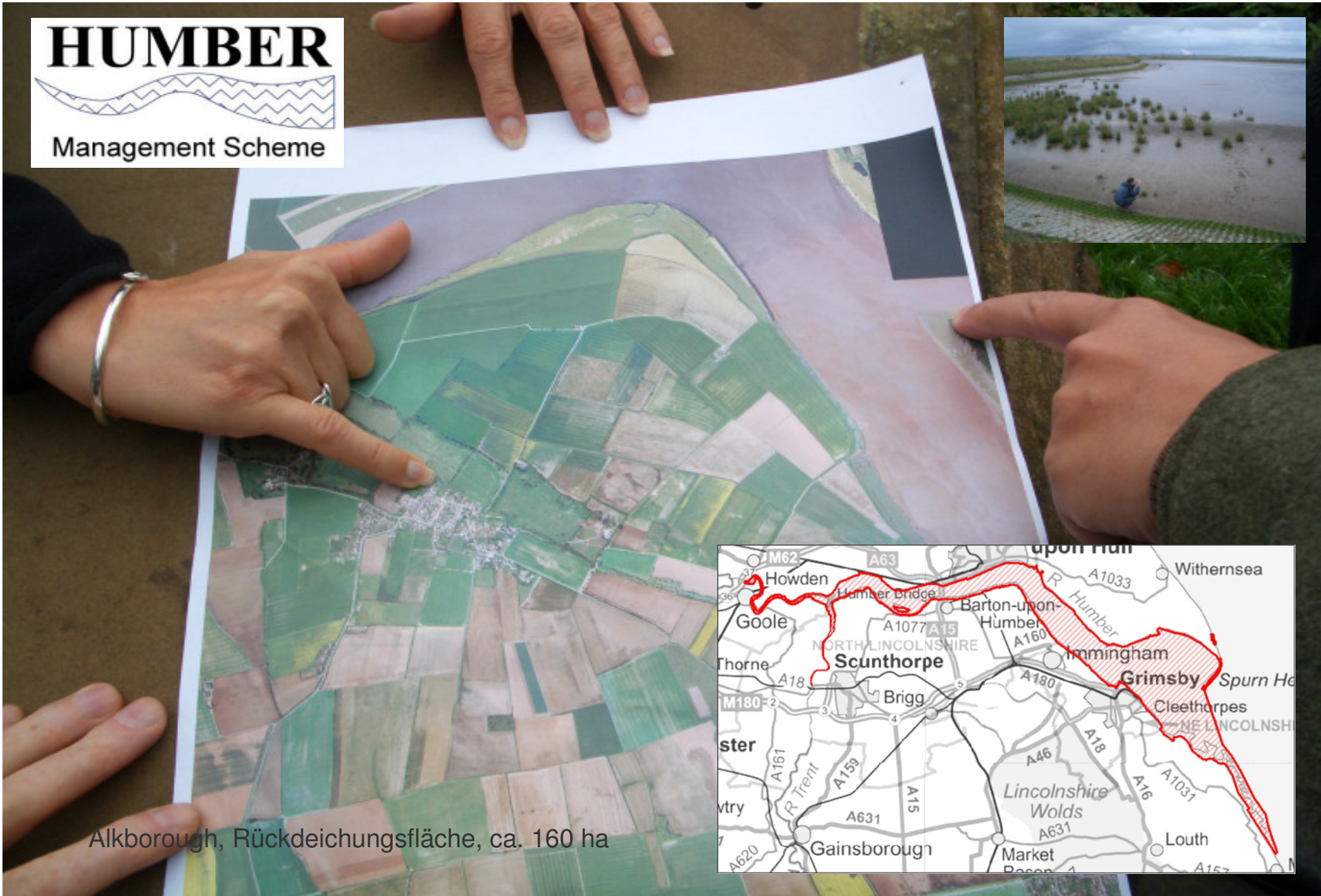
-  A PARTNERSHIP FOR PROGRESS – Guiding Principles
-  A FUTURE FOR FARMING – Sustainable Agriculture
-  A BREATH OF FRESH AIR – Improving Air Quality
-  NATURE MATTERS – Maintaining and Enhancing Biodiversity
-  EARNING OUR LIVING – Sustainable Commercial Use
-  IN THE KNOW – Promoting Education and Awareness
-  FISH FOR TODAY AND TOMORROW – Managing Our Fisheries
-  LIVING WITH THE TIDE – Effective Flood Defence
-  TODAY'S CULTURE TOMORROW'S HISTORY –  
Conserving and Promoting Historical and Cultural Resources
-  AN ESTUARY WITH A VIEW – Maintaining Landscape Character
-  PLAY TIME – Maintaining and Enhancing Recreation
-  WASTELINE – Managing Waste
-  CLEAN WATERS – Effective Water Management





Der Humber





Humber Management Scheme





Die Schelde

# Ontwikkelingsschets 2010 Schelde-estuarium

## Zusammenfassung

**Flandern und die Niederlande  
entscheiden sich für ein  
sicheres, zugängliches und  
natürliches Schelde-Ästuarium**



Die Schelde



Projectdirectie ontwikkelingsschets Schelde-estuarium





Die Schelde



## FIVE OBJECTIVES (2000)



- **Maintaining the physical characteristics**
- **Maximum safety against flooding**
- **Optimal accessibility of the Schelde ports;**
- **A healthy and dynamic ecosystem**
- **Cooperation between Flanders and the Netherlands**

### Costs

- Safety: 220 million euro
  - Accessibility: 250 million euro
  - Nature development Westerschelde: 200 million euro (1/4 for farmers)
  - Extra for Zeeland: 100 million euro (infrastructure)
- ~ 770 Mio €**

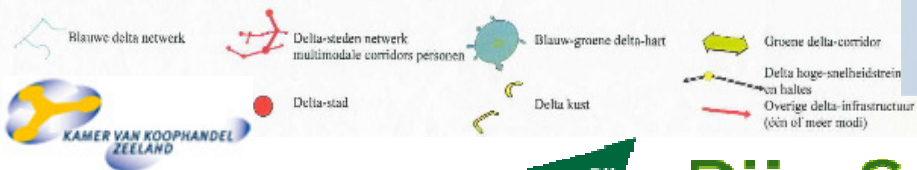
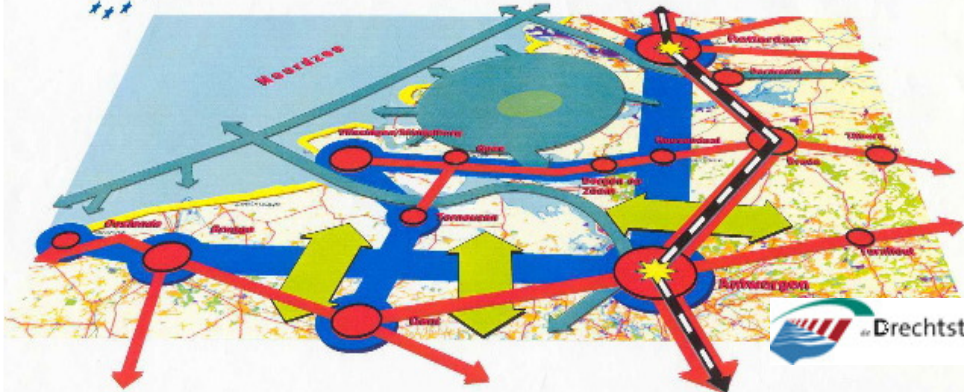






ProSes

DELTA BEELDMERK (SUGGESTIEF TOEKOMSTREELD VOOR DE RIJN-SCHELDE-DELTA)

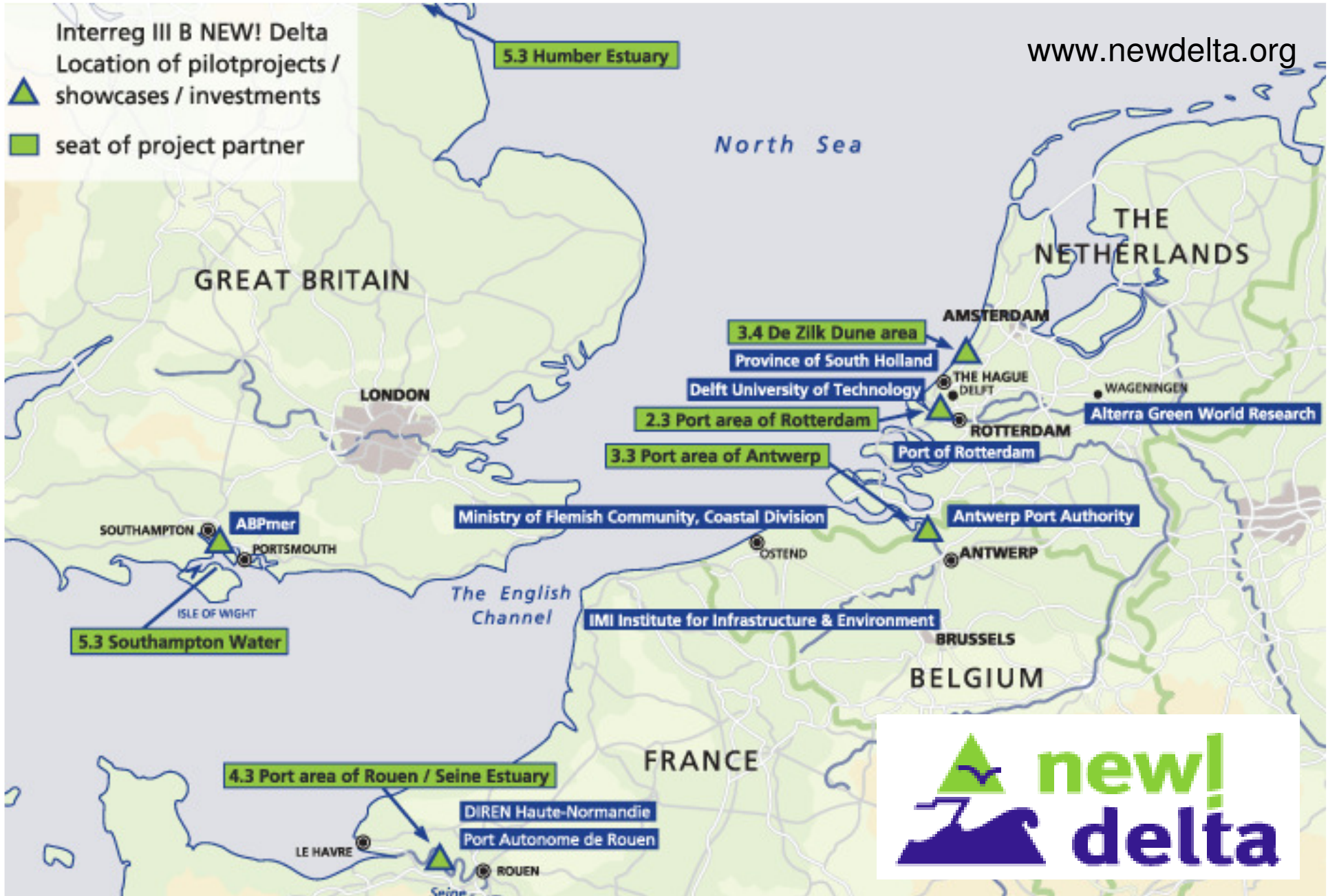


# Rijn-Schelde Delta

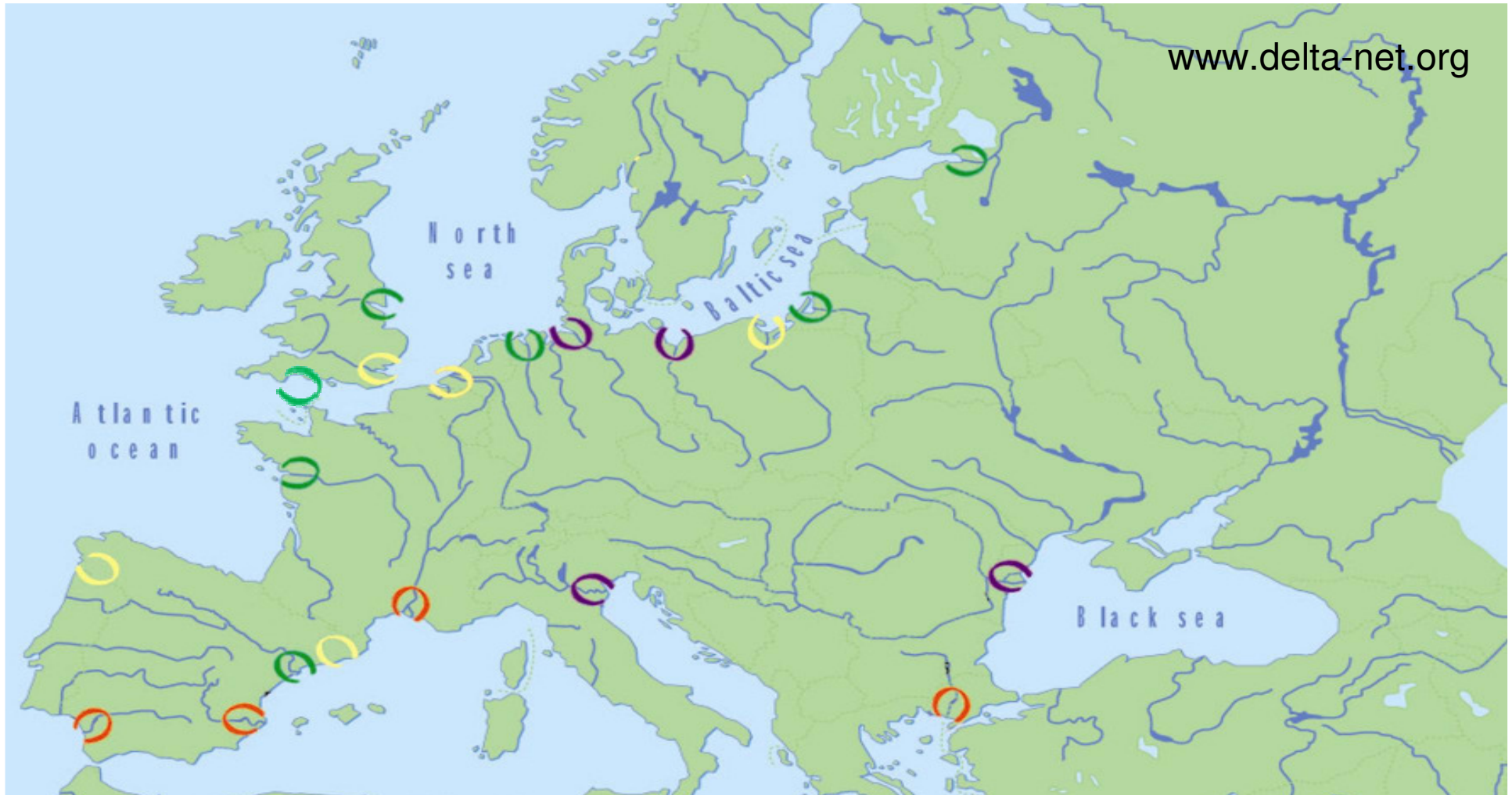
[www.rsdelta.org](http://www.rsdelta.org)








NewDelta!



-  initiating DeltaNet partner
-  interested DeltaNet partner
-  potential DeltaNet partner
-  delta involved in other partnerships

# DeltaNet

NETWORK OF EUROPEAN DELTA'S

DeltaNet













GETTING EVERYBODY ON BOARD

*„Alle einsteigen bitte!“*